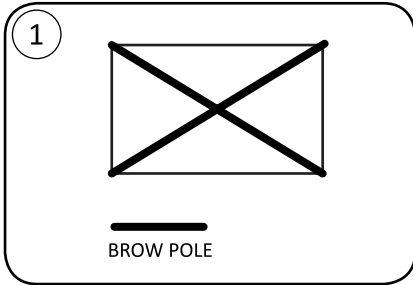
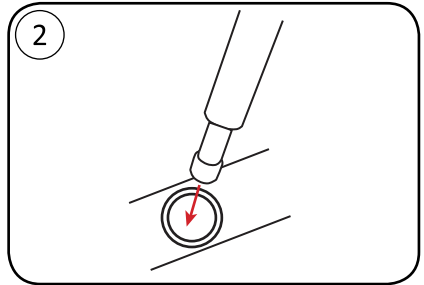


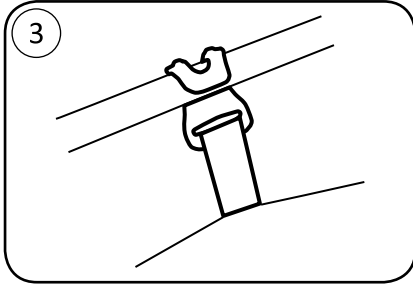
How to set up your Marmot Crane Creek UL 2P/3P



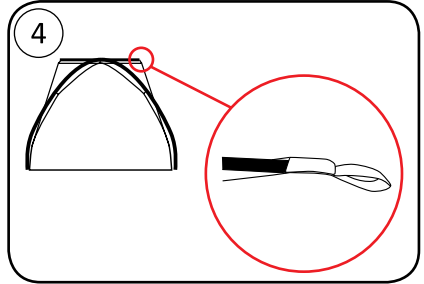
CONNECT POLES LEAVING NO SPACE BETWEEN SECTIONS AND LAY ON TENT BODY



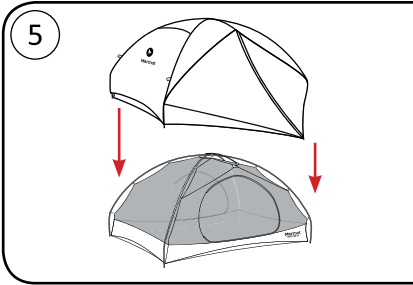
INSERT POLE TIPS INTO CORNER GROMMETS



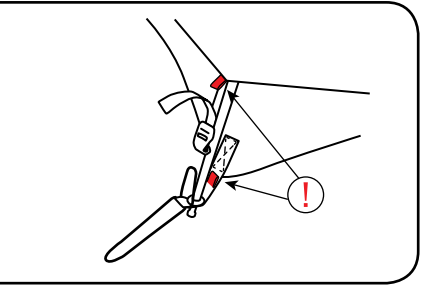
CONNECT CLIPS - MATCH WEBBING COLOR TO POLE COLOR



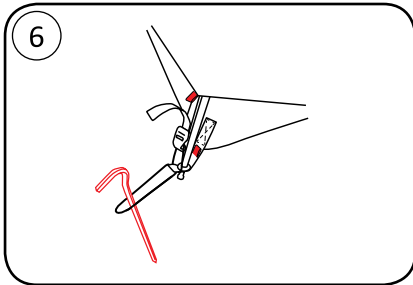
PLACE BROW POLE ON TOP OF "X" POLES AND INSERT INTO WEBBING POCKET



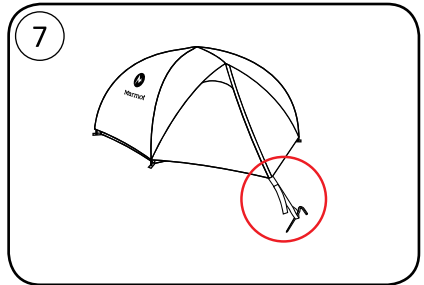
PULL RAINFLY OVER BODY



NOTE RED TABS ON FRONT CORNERS
HOOK BUCKLE AROUND CORD AND PULL TO TIGHTEN

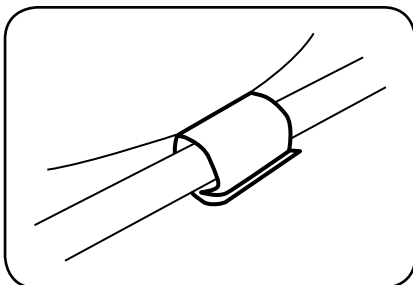


STAKE OUT CORNERS

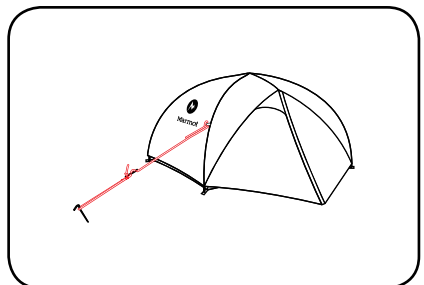


STAKE OUT VESTIBULES

OPTIONAL



LOOK UNDER FLY - VELCRO FLY TO POLES



GUY OUT IN HIGH WIND

For additional information about your Marmot® tent
please visit www.marmot.com.