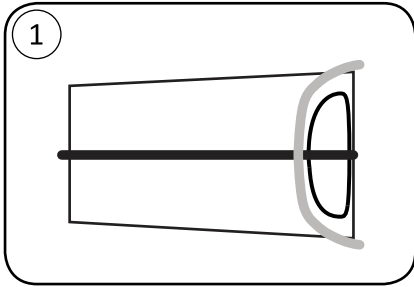
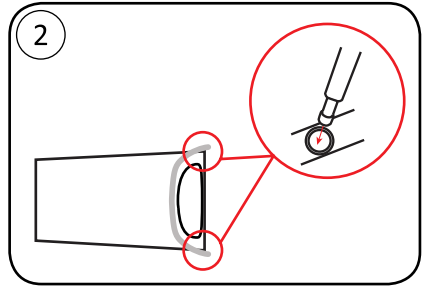


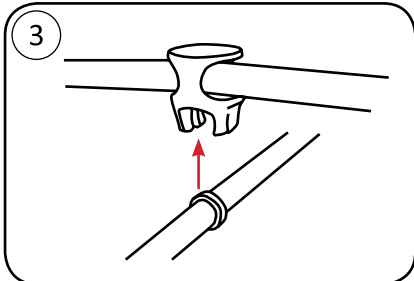
How to set up your Marmot Bolt UL 2P



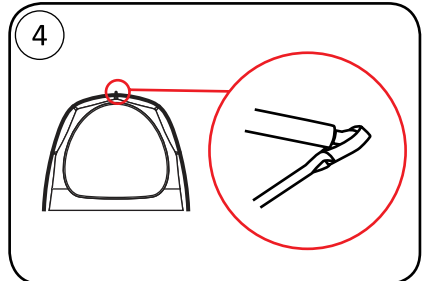
1
CONNECT POLES LEAVING NO SPACE BETWEEN SECTIONS AND LAY ON TENT BODY



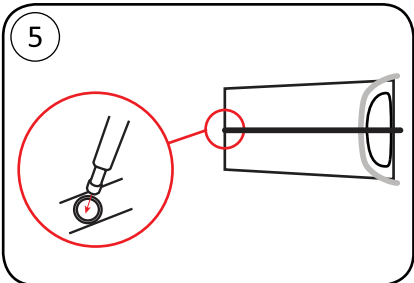
2
INSERT DOOR POLE TIPS INTO CORNER GROMMETS



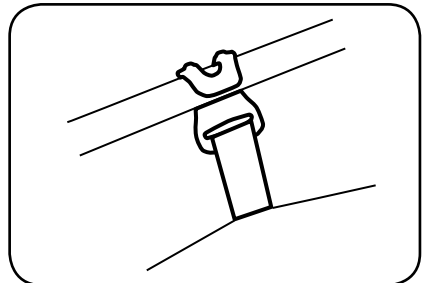
3
CONNECT CENTER POLE TO DOOR POLE



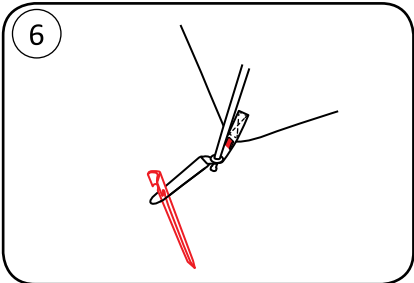
4
INSERT CENTER POLE TIP INTO PLASTIC CAP



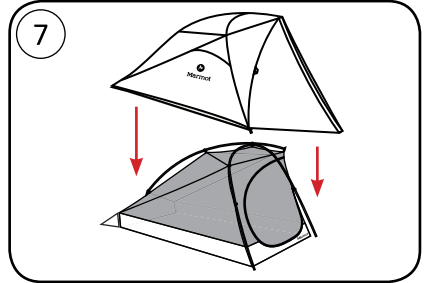
5
INSERT CENTER POLE TIP INTO GROMMET AT FOOT



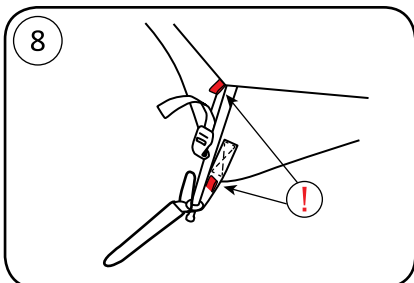
CONNECT CLIPS - MATCH WEBBING COLOR TO POLE COLOR



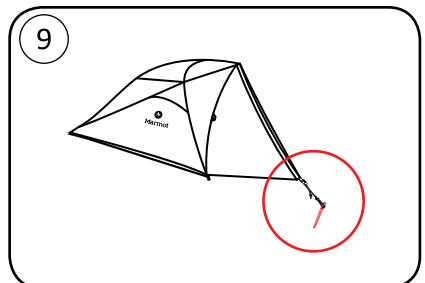
6
STAKE OUT CORNERS



7
PULL RAINFLY OVER BODY



8
HOOK BUCKLE AROUND CORD AND PULL TO TIGHTEN



9
STAKE OUT VESTIBULE

For additional information about your Marmot® tent please visit www.marmot.com.