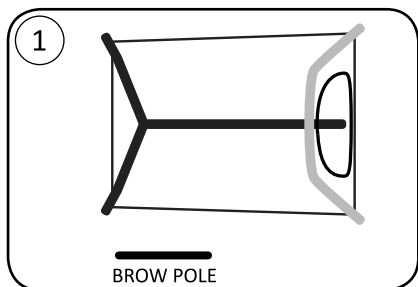
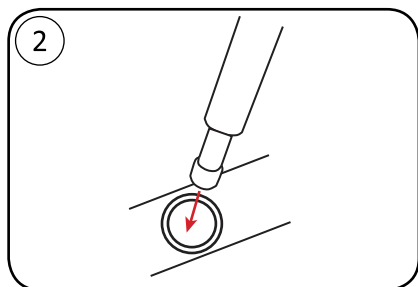


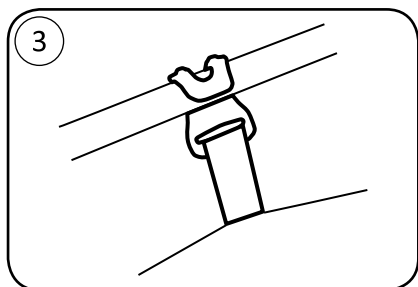
How to set up your Marmot Bolt 3P



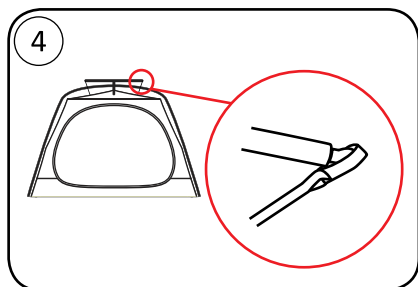
CONNECT POLES LEAVING NO SPACE BETWEEN SECTIONS AND LAY ON TENT BODY



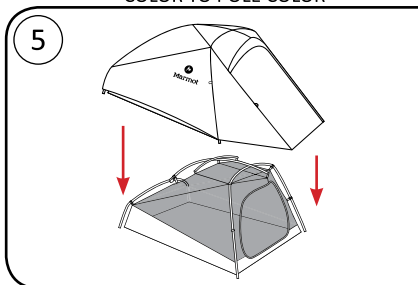
INSERT POLE TIPS INTO CORNER GROMMETS



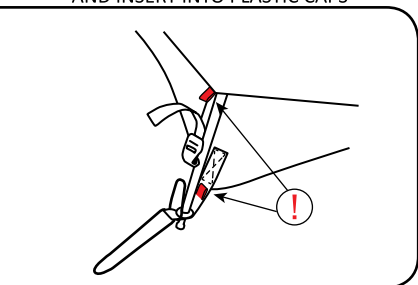
CONNECT CLIPS - MATCH WEBBING COLOR TO POLE COLOR



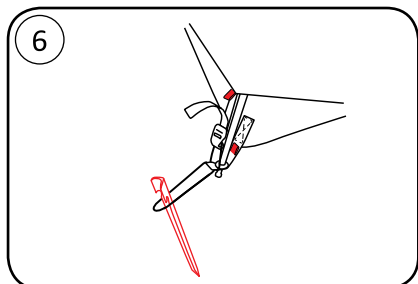
PLACE BROW POLE ON TOP OF MAIN POLES AND INSERT INTO PLASTIC CAPS



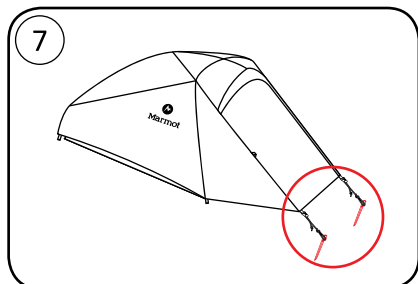
PULL RAINFLY OVER BODY



NOTE RED TABS ON FRONT CORNERS
HOOK BUCKLE AROUND CORD AND PULL TO TIGHTEN

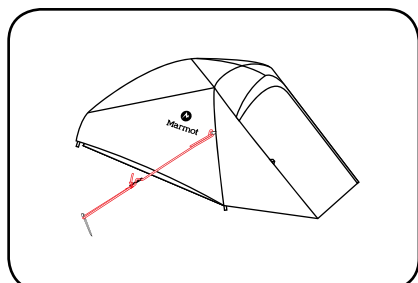
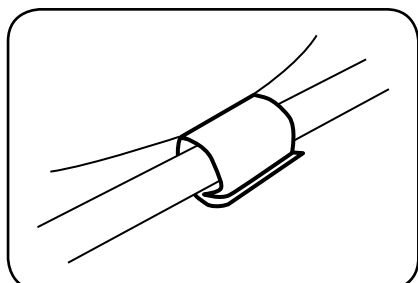


STAKE OUT CORNERS



STAKE OUT VESTIBULE

OPTIONAL



For additional information about your Marmot® tent
please visit www.marmot.com.