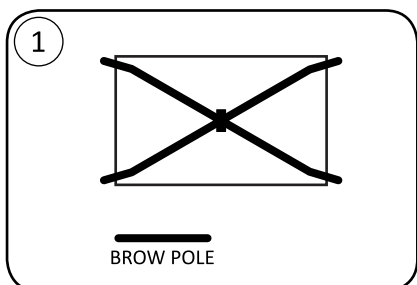
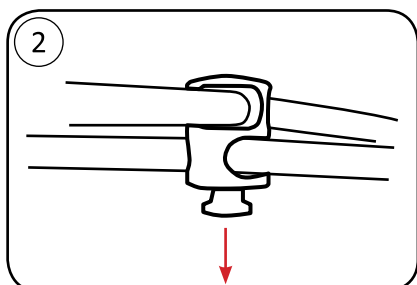


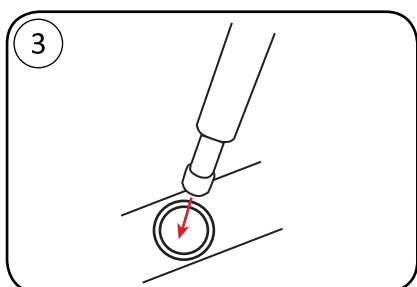
How to set up your Marmot Alvar 2P/3P



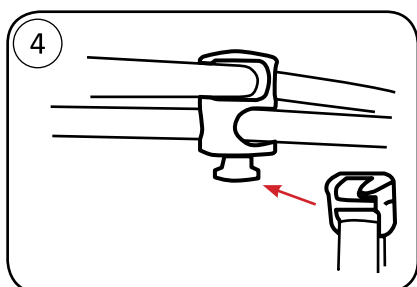
CONNECT POLES LEAVING NO SPACE BETWEEN SECTIONS AND LAY ON TENT BODY



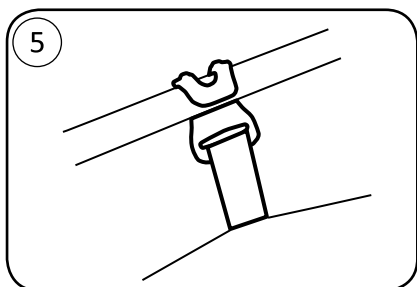
SMALL END OF HUB MUST POINT DOWN



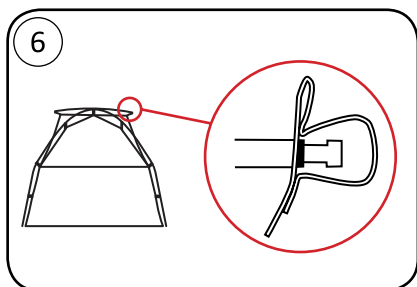
INSERT POLE TIPS INTO CORNER GROMMETS



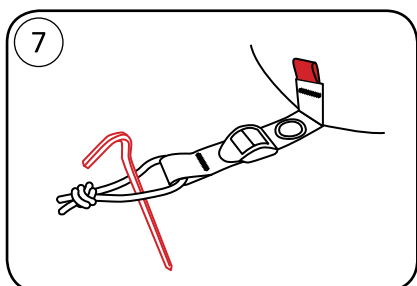
CONNECT CENTER CLIP TO HUB



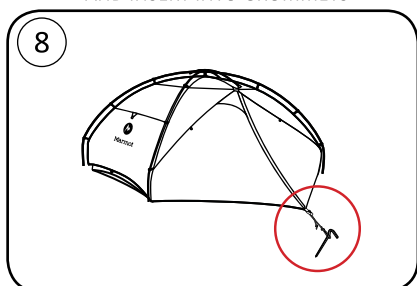
CONNECT CLIPS - MATCH WEBBING COLOR TO POLE COLOR



PLACE BROW POLE ON TOP OF "X" POLES AND INSERT INTO GROMMETS

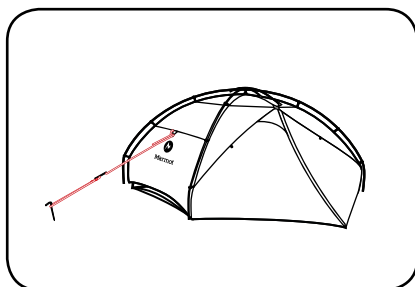


STAKE OUT CORNERS



STAKE OUT VESTIBULES

OPTIONAL



GUY OUT IN HIGH WIND