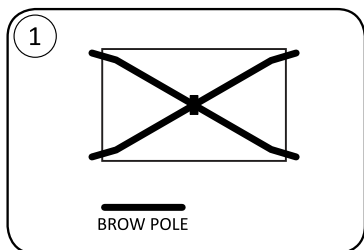
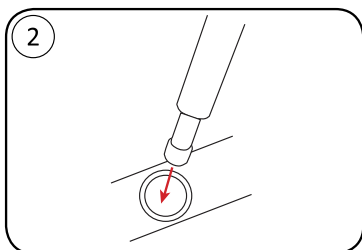


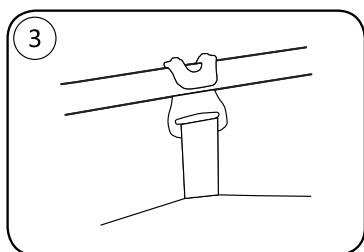
How to set up your Marmot Taranis 2P/3P



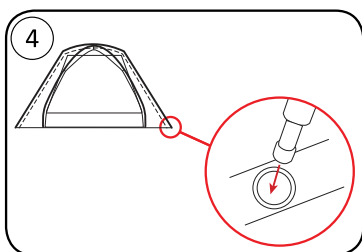
CONNECT POLES LEAVING NO SPACE BETWEEN SECTIONS AND LAY ON TENT BODY



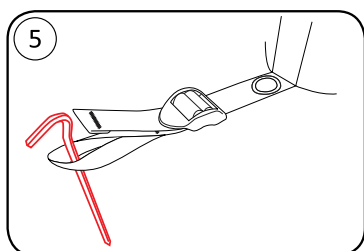
INSERT POLE TIPS INTO CORNER GROMMETS



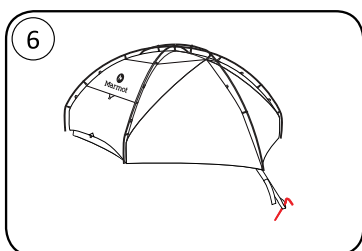
CONNECT CLIPS TO POLES



PLACE BROW POLE ON TOP OF "X" POLES AND INSERT INTO GROMMETS

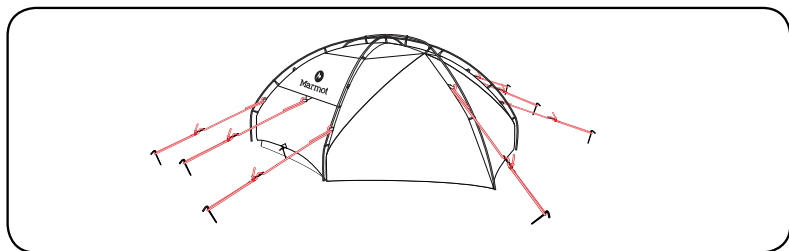


STAKE OUT CORNERS



STAKE OUT VESTIBULES

OPTIONAL



GUY OUT IN HIGH WIND

For additional information about your Marmot® tent
please visit www.marmot.com.