

## Pre-2023



**CVA9** .....  
Up to 19.0 SEER  
Five-Stage

**CCA7** .....  
Up to 17.0 SEER  
Two-Stage

**CSA6** .....  
Up to 16.0 SEER  
Single-Stage

**CSA5** .....  
Up to 15.5 SEER  
Single-Stage

**N4A7** .....  
Up to 17.5 SEER  
Two-Stage

**N4A6** .....  
15.0 - 17.0 SEER  
Single-Stage

**NXA6** .....  
15.0 - 17.0 SEER  
Single-Stage

**N4A5** .....  
14.0 - 15.0 SEER  
Single-Stage

**NXA4** .....  
14.0 - 15.0 SEER  
Single-Stage

**N4A4** .....  
Coastal Model  
Single-Stage

**N4A3** .....  
13.0 - 14.0 SEER  
Single-Stage

**NH4A4** .....  
14.0 - 15.0 SEER  
Single-Stage, Horizontal Discharge



**R4A5** .....  
Up to 17.0 SEER  
Single-Stage

**R4A4** .....  
Up to 16.0 SEER  
Single-Stage

**R4A3** .....  
13.0-15.0 SEER  
Single-Stage



## 2023



**CVA9** .....  
Up to 19.0 SEER2\*  
Five-Stage

**C4A7T** .....  
Up to 17.0 SEER2  
Two-Stage

**C4A6S** .....  
Up to 16.5 SEER2  
Single-Stage

### Ion™ System

\* Based on preliminary ratings - subject to change.

**N4A7T** .....  
Up to 17.0 SEER2  
Two-Stage  
Includes  
Coastal Model

### Performance Series

**N4A5S** .....  
Up to 16.5 SEER2  
Single-Stage  
Includes  
Coastal Model



**N4A4S** .....  
Up to 16.5 SEER2  
Single-Stage

**S4A5S** .....  
Up to 16.5 SEER2  
Single-Stage, Horizontal Discharge

**R4A5S** .....  
Up to 16.5 SEER2  
Single-Stage

### R-Series

**R4A4S** .....  
Up to 16.0 SEER2  
Single-Stage



Note: There will be no changes to the three-phase products.

Air Conditioner	1	2	3	4	5	6	7	8	9	10	11	12
Title	Brand & Airflow Type	Refrigerant Type	OD Type	Efficiency	Design Type	Nominal Cooling Capacity	Feature	Voltage	Special Feature	Region	Major Series	
Product #/Letter	<b>N</b>	<b>4</b>	<b>A</b>	<b>4</b>	<b>S</b>	<b>18</b>	<b>A</b>	<b>K</b>	<b>A</b>	<b>N</b>	<b>A</b>	
Descriptions	N = Non-Brand Specific Vertical S = Horizontal Discharge C = Ion System R = R-Series	4 = R-410A	A = AC	4 = North Compliant 5 = Southwest Compliant 6 = 16 SEER2 7 = 17 SEER2 8 = 18 SEER2 9 = 19 SEER2	S = Single-Stage T = Two-Stage V = Variable-Speed	18 = 1.5 tons 24/25 = 2 tons 30 = 2.5 tons 36/37 = 3 tons 42/43 = 3.5 tons 48/49 = 4 tons 60/61 = 5 tons	A = Standard C = Coastal	K = 208-230-1 or 208/230-1 H = 208-230-3 or 208/230-3 L = 460-3 S = 575-3 W = 230-1-50	A = Standard	N = Standard North AC W = Standard Southeast and Southwest AC	A - Z	

Note: Ion™ System CVA9 follows the pre-2023 nomenclature and meets the 2023 regulatory requirements.

## Pre-2023

## 2023



**CVH8**  
Up to 18.0 SEER  
Five-Stage

**CCH6**  
Up to 18.0 SEER  
Two-Stage

**CSH6**  
Up to 17.0 SEER  
Single-Stage

**CSH4**  
15.0 - 16.0 SEER  
Single-Stage

**CVH8**  
Up to 18.0 SEER2\*  
Five-Stage

**C4H7T**  
Up to 17.0 SEER2  
Two-Stage

**C4H6S**  
Up to 15.2 SEER2\*  
Single-Stage

### Ion™ System



**NH4H4**  
14.0 - 15.0 SEER  
Single-Stage  
Horizontal Discharge

**N4H6**  
Up to 17.5 SEER  
Two-Stage

**NXH6**  
Up to 16.0 SEER  
Single-Stage

**NXH5**  
Up to 16.0 SEER  
Single-Stage

**N4H4**  
Up to 15.0 SEER  
Single-Stage  
Coastal Model Available

**DLCURA**  
Up to 18.0 SEER2\*  
Variable-Speed

**N4H7T**  
Up to 17.0 SEER2  
Two-Stage  
Includes  
Coastal Model

**N4H5S**  
At 14.3 SEER2  
Single-Stage  
Includes  
Coastal Model

### Performance Series



### R-Series



**R4H4**  
Up to 15.0 SEER  
Single-Stage

**R4H5S**  
At 14.3 SEER2  
Single-Stage

Note: There will be no changes to three-phase product

\* Based on preliminary ratings - subject to change.

Heat Pumps	1	2	3	4	5	6	7	8	9	10	11	12
Title	Brand & Airflow Type	Refrigerant Type	OD Type	Efficiency	Design Type	Nominal Cooling Capacity		Feature	Voltage	Special Feature	Region	Major Series
Product #/Letter	N	4	H	5	S	18		A	K	A	A	A
Descriptions	N = Non-Brand Specific Vertical C = Ion System R = R-Series	4 = R-410A	H = HP	5 = National Compliant 6 = 16 SEER2 7 = 17 SEER2 8 = 18 SEER2 9 = 19 SEER2	S = Single-Stage T = Two-Stage V = Variable-Speed	18 = 1.5 tons 24/25 = 2 tons 30 = 2.5 tons 36/37 = 3 tons 42/43 = 3.5 tons 48/49 = 4 tons 60/61 = 5 tons		A = Standard C = Coastal	K = 208-230-1 or 208/230-1 H = 208-230-3 or 208/230-3 L = 460-3 S = 575-3 W = 230-1-50	A = Standard	A = HP	A - Z

Note: Ion™ System CVH8 follows the pre-2023 nomenclature and meets the 2023 regulatory requirements.

Pre-2023

2023

## A-Coils



**EAM4X, EDM4X**

Cased Multi-Poise

**EAD4X**

Cased Vertical

**EAA4X**

Uncased Vertical

No Change

**EAM4X**

Cased Multi-Poise

**EAA4X**

Uncased Vertical



## N-Coils

## V-Coils



**END4X**

Cased Vertical

**ENW4X**

Cased Transition

**ENA4X /EMA4X**

Uncased Vertical

**ENH4X**

Cased Horizontal

**EVD4X**

Cased Vertical

Power-V Technology

**EVM4X**

Cased Multi-Poise

Power-V Technology

**POWER-V**  
TECHNOLOGY



## Slab Coil



**EHD4X**

Cased Horizontal

No Change

**EHD4X**

Cased Horizontal



Furnace Coils		1	2	3	4	5	6-7	8-9	10	11
A-Coil & Slab	Title	Component	Coil Type	Coil Configuration	Refrigerant Type	Metering Devices	Unit Capacity	Tubing Design	Cabinet Width	Major Series
	Product #/Letter	<b>E</b>	<b>A</b>	<b>D</b>	<b>4</b>	<b>X</b>	<b>18</b>	<b>L</b>	<b>17</b>	<b>A</b>
	Descriptions	E = Furnace Coil	A = A-Coil H = Slab	A = Uncased D = Vertical (UPF/DNF) M = Multi-Poise H = Horizontal	4 = R-410A	P = Piston X = TXV	18/19 = 18k BTU 24/25 = 24k BTU 30/31 = 30k BTU 36/37 = 36k BTU 42/43 = 42k BTU 48/49 = 48k BTU 60/61 = 60k BTU	L = Aluminum	14 = 14.2" wide 17 = 17.5" wide 21 = 21" wide 24 = 24.5" wide	A = Revision
Power-V Coils		1	2	3	4	5	6-7	8-9	10	11
V-Coil & Slope	Title	Component	Coil Type	Coil Configuration	Refrigerant Type	Metering Devices	Unit Capacity	Tubing Design	Cabinet Width	Major Series
	Product #/Letter	<b>E</b>	<b>V</b>	<b>D</b>	<b>4</b>	<b>X</b>	<b>36</b>	<b>M</b>	<b>17</b>	<b>A</b>
	Descriptions	E = Furnace Coil	V = V-Coil S = Slope	D = Vertical M = Multi-Poise R = Replacement H = Horizontal	4 = R-410A	P = Piston X = TXV E = EXV	18/19 = 1.5 tons 24/25/26 = 2 tons 30/31 = 2.5 tons 36/37/38 = 3 tons 42/43 = 3.5 tons 48/49/50 = 4 tons 60/61 = 5 tons	M = Power-V	14 = 14.2" wide 17 = 17.5" wide 21 = 21" wide 24 = 24.5" wide	A = Revision

**Pre-2023**

**2023**

**Deluxe**



**FCM** .....  
Variable-Speed  
VCA Motor

**FCM** .....  
Variable-Speed  
VCA Motor



**Mid-Tier**



**FVM** .....  
Two-Stage  
VCA Motor

**FVM** .....  
Two-Stage  
VCA Motor



**Entry**



**FXM4X** .....  
Single-Stage  
FCT-5 Motor

**FEM4X** .....  
Single-Stage  
FCT-5 Motor

**FEM4P** .....  
Single-Stage  
FCT-5 Motor

**FJM** .....  
Single-Stage  
FCT-5 Motor



Fan Coils	1	2	3	4	5	6	7	8	9	10	11	12
Title	Unit	Type	Position	Major Series	Refrigerant Type	Metering Device	Nominal Cooling Capacity	Coil Type	Feature	Cabinet Width	Sales Code	
Product #/Letter	F	V	M	A	4	X	24	L	0	B	A	
Descriptions	F = Fan Coil	V = Variable-Speed C = Communicating ECM J = ECM Five-Speed	U = Upflow M = Multi-Poise	A - Z	4 = R-410A	X = TXV	18/19 = 18,000 24/25 = 24,000 30/31 = 30,000 36/37 = 36,000 42/43 = 42,000 48/49 = 48,000 60/61 = 60,000	L = Aluminum	0	A = 14" B = 17" C = 21" D = 24"	A	



### Pre-2023

### 2023

#### Multifamily



**FMA4X**..... No Change .....  
Single-Stage  
FCT-5 Motor

**FMA4P**..... No Change .....  
Single-Stage  
PSC Motor

**FMC/U4Z**..... No Change .....  
Single-Stage  
FCT-5 Motor

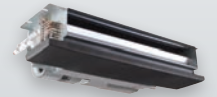
**FMC/U4X**..... No Change .....  
Single-Stage  
PSC Motor

**FMA4X**  
Single-Stage  
FCT-5 Motor

**FMA4P**  
Single-Stage  
PSC Motor

**FMC/U4Z**  
Single-Stage  
FCT-5 Motor

**FMC/U4X**  
Single-Stage  
PSC Motor



Multifamily Fan Coils	1	2	3	4	5	6 7 8 9	10	11
Title	Unit	Type	Installation Type	Refrigerant Type	Metering Device	Nominal Cooling Capacity	Revision	Sales Code/ Features
Product #/Letter	<b>F</b>	<b>M</b>	<b>U</b>	<b>4</b>	<b>Z</b>	<b>2400</b>	<b>A</b>	<b>L</b>
Descriptions	F = Fan Coil	M = Multifamily	U = Uncased C = Cased A = Apartment	4 = R-410A	X = TXV & PSC Motor Z = TXV & ECM Motor	1800 = 18,000 = 1.5 tons 2400 = 24,000 = 2 tons 3000 = 30,000 = 2.5 tons 3600 = 36,000 = 3 tons	A = Marketing Revision	L = Aluminum Coils

**Motor Key:** VCA = Variable-Speed Constant Airflow Motor | FCT = Fixed-Speed Constant Torque Motor | PSC = Permanent Split Capacitor



## Pre-2023

## 2023



**G97CMN** .....  
Up to 98% AFUE  
Modulating Heating  
Variable-Speed Cooling  
VCA ECM Motor

**G96CTN** .....  
Up to 96.7% AFUE  
Two-Stage Heating  
Variable-Speed Cooling  
VCA ECM Motor

**G95CSU** .....  
Up to 95% AFUE  
Single-Stage Heating  
Variable-Speed Cooling  
VCA ECM Motor

Ultra-Low NOx

**G97CMN** .....  
Up to 98% AFUE  
Modulating Heating  
Variable-Speed Cooling  
VCA ECM Motor

**G96CTN** .....  
Up to 96.7% AFUE  
Two-Stage Heating  
Variable-Speed Cooling  
VCA ECM Motor

**G95CSU** .....  
Up to 95% AFUE  
Single-Stage Heating  
Variable-Speed Cooling  
VCA ECM Motor

## Ion™ System



**G96VTN** .....  
Up to 96% AFUE  
Two-Stage Operation  
VCT ECM Motor

**G96VTN** .....  
Up to 96.5% AFUE  
Two-Stage Operation  
VCT ECM Motor

## QuietComfort® Series



**N96VSN** .....  
Up to 96% AFUE  
Single-Stage Heating  
Two-Stage Cooling  
VCT ECM Motor

**N95ESN** .....  
Up to 96% AFUE  
Single-Stage Operation  
FCT-5 ECM Motor

**N92ESN** .....  
Up to 92.1% AFUE  
Single-Stage Operation  
FCT-5 ECM Motor

**N95ESU** .....  
Up to 95% AFUE  
Single-Stage Operation  
FCT-5 ECM Motor

Ultra-Low NOx

**N96VSN** .....  
Up to 96.5% AFUE  
Single-Stage Heating  
Two-Stage Cooling  
VCT ECM Motor

**N96MSN** .....  
Up to 96.5% AFUE  
Single-Stage Operation  
MCT-18 ECM Motor

**N92MSN** .....  
Up to 92.1% AFUE  
Single-Stage Operation  
MCT-18 ECM Motor

**N95MSU** .....  
Up to 95% AFUE  
Single-Stage Heating  
Two-Stage Cooling  
MCT-18 ECM Motor

## Performance Series



**R95ESN** .....  
Up to 96% AFUE  
Single-Stage Operation  
FCT-5 ECM Motor

**R92ESN** .....  
Up to 92.1% AFUE  
Single-Stage Operation  
FCT-5 ECM Motor

**R95ESU** .....  
Up to 95% AFUE  
Single-Stage Operation  
FCT-5 ECM Motor

Ultra-Low NOx

**R95MSN** .....  
Up to 96% AFUE  
Single-Stage Operation  
MCT-18 ECM Motor

**R92MSN** .....  
Up to 92.1% AFUE  
Single-Stage Operation  
MCT-18 ECM Motor

**R95MSU** .....  
Up to 95% AFUE  
Single-Stage Heating  
Two-Stage Cooling  
MCT-18 ECM Motor

## R-Series



90% Gas Furnaces	1	2 3	4	5	6	7 8 9	10 11	12 13	14
Title	Brand Identifier	Product Efficiency Level	Motor	Heating Stages	Feature	Heating Input (BTU/H)	Width	Cooling CFM (100s)	Major Series
Product #/Letter	<b>G</b>	<b>97</b>	<b>C</b>	<b>M</b>	<b>N</b>	<b>060</b>	<b>14</b>	<b>08</b>	<b>A</b>
Descriptions	G = Deluxe N = Entry/ Generic R = R-Series	92 = 92% AFUE 95 = 95% AFUE 96 = 96% AFUE 97 = 97% AFUE	C = Comm. VS Constant Airflow (VCA) ECM M = Multi 18-Speed Constant Torque (MCT) ECM V = VS Constant Torque (VCT) ECM	M = Modulating T = Two-Stage S = Single-Stage	N = Standard NOx L = Low NOx U = Ultra-Low NOx	026 = 26,000 * 040 = 40,000 * 060 = 60,000 * 080 = 80,000 * 100 = 100,000 * 120 = 120,000 140 = 140,000	14 = 14.2" 17 = 17.5" 21 = 21.0" 24 = 24.5"	08 = 800 10 = 1000 12 = 1200 14 = 1400 16 = 1600 20 = 2000 22 = 2200	A B C D

\* ULN Models Available

## Pre-2023

## 2023



**G80CTL** .....  
80% AFUE  
Two-Stage Heating  
Variable-Speed Cooling  
VCA ECM Motor

**G80CS/G80TU\*** .....  
80% AFUE  
Single-/Two-Stage Heating  
Variable-Speed Cooling  
VCA ECM Motor

\* Two-stage communicating model to launch late 2023.

Ultra-Low NOx

## Ion System



**G80CTL**  
80% AFUE  
Two-Stage Heating  
Variable-Speed Cooling  
VCA ECM Motor

**G80CTU**  
80% AFUE  
Two-Stage Heating  
Variable-Speed Cooling  
VCA ECM Motor



**G80VTL** .....  
80% AFUE  
Two-Stage Operation  
VCT ECM Motor

**G80VTL**  
80% AFUE  
Two-Stage Operation  
VCT ECM Motor

## QuietComfort Series



**N80VSL** .....  
80% AFUE  
Single-Stage Heating  
Two-Stage Cooling  
VCT ECM Motor

**N80ESN** .....  
80% AFUE  
Single-Stage Operation  
FCT-5 ECM Motor

**N80ESL** .....  
80% AFUE  
Single-Stage Operation  
FCT-5 ECM Motor

**N80ESU** .....  
80% AFUE  
Single-Stage Operation  
FCT-5 ECM Motor

Ultra-Low NOx

**N80VSL**  
80% AFUE  
Single-Stage Heating  
Two-Stage Cooling  
VCT ECM Motor

**N80MSN**  
80% AFUE  
Single-Stage Operation  
MCT-18 ECM Motor

**N80MSL**  
80% AFUE  
Single-Stage Operation  
MCT-18 ECM Motor

**N80MSU**  
80% AFUE  
Single-Stage Heating  
Two-Stage Cooling  
MCT-18 ECM Motor

## Performance Series



**R80ESN** .....  
80% AFUE  
Single-Stage Operation  
FCT-5 ECM Motor

**R80ESL** .....  
80% AFUE  
Single-Stage Operation  
FCT-5 ECM Motor

**R80ESU** .....  
80% AFUE  
Single-Stage Operation  
FCT-5 ECM Motor

Ultra-Low NOx

**R80MSN**  
80% AFUE  
Single-Stage Operation  
MCT-18 ECM Motor

**R80MSL**  
80% AFUE  
Single-Stage Operation  
MCT-18 ECM Motor

**R80MSU**  
80% AFUE  
Single-Stage Heating  
Two-Stage Cooling  
MCT-18 ECM Motor

## R-Series



80% Gas Furnaces	1	2 - 3	4	5	6	7 - 8 - 9	10 - 11	12 - 13	14
Title	Brand Identifier	Product Efficiency Level	Motor	Heating Stages	Feature	Heating Input (BTU/H)	Width	Cooling CFM (100s)	Major Series
Product #/Letter	<b>G</b>	<b>80</b>	<b>C</b>	<b>T</b>	<b>L</b>	<b>060</b>	<b>14</b>	<b>08</b>	<b>A</b>
Descriptions	G = Deluxe N = Entry/ Generic R = R-Series	80 = 80% AFUE	C = Comm. VS Constant Airflow (VCA) ECM M = Multi 18-Speed Constant Torque (MCT) ECM V = VS Constant Torque (VCT) ECM	M = Modulating T = Two-Stage S = Single-Stage	N = Standard NOx L = Low NOx U = Ultra-Low NOx	040 = 40,000 * 045 = 45,000 060 = 60,000 * 070 = 70,000 080 = 80,000 * 090 = 90,000 100 = 100,000 * 110 = 110,000 135 = 135,000 155 = 155,000	14 = 14.2" 17 = 17.5" 21 = 21.0" 24 = 24.5"	08 = 800 10 = 1000 12 = 1200 14 = 1400 16 = 1600 20 = 2000 22 = 2200	A B C D

\* ULN Models Only



## Pre-2023

## 2023



**PGR5**  
Year-Round Air Conditioner  
Up to 16.0 SEER  
Two-Stage Operation

**PAR5**  
Packaged Air Conditioner  
Up to 16.0 SEER  
Two-Stage Operation

**PHR5**  
Packaged Heat Pump  
Up to 16.0 SEER  
Two-Stage Operation

**PGS4**  
Year-Round Air Conditioner  
Single-Stage Operation

**PDS4**  
Dual-Fuel  
Single-Stage Operation

**PGR5**  
Year-Round Air Conditioner  
Up to 16.0 SEER  
Stainless Steel Heat Exchanger  
Two-Stage Operation

**PAR5**  
Packaged Air Conditioner  
Up to 16.0 SEER  
Two-Stage Operation

**PHR5**  
Packaged Heat Pump  
Up to 16.0 SEER  
Two-Stage Operation

**Obsolete**

**Obsolete**

### QuietComfort® Series



Note: All QuietComfort models at 15.2 SEER2 based on preliminary ratings - subject to change.



**PGD4**  
Year-Round Air Conditioner  
Single-Stage Operation

**PAD4**  
Packaged Air Conditioner  
Single-Stage Operation

**PDD4**  
Dual-Fuel  
Single-Stage Operation

**PHD4**  
Packaged Heat Pump  
Single-Stage Operation

**PGD4\***  
Year-Round Air Conditioner  
Stainless Steel Heat Exchanger  
Single-Stage Operation

**PAD4\***  
Packaged Air Conditioner  
Single-Stage Operation

**PDD4\***  
Dual-Fuel  
Stainless Steel Heat Exchanger  
Single-Stage Operation

**PHD4\***  
Packaged Heat Pump  
Single-Stage Operation

### Performance Series



Note: All Performance models at 13.4 SEER2 based on preliminary ratings - subject to change.



**PAJ4**  
Packaged Air Conditioner  
Single-Stage Operation

**PHJ4**  
Packaged Heat Pump  
Single-Stage Operation

**PAJ4\***  
Packaged Air Conditioner  
Single-Stage Operation

**PHJ4\***  
Packaged Heat Pump  
Single-Stage Operation

### Manufactured Housing



\* Aluminum standard indoor coil

Small Packaged Products	1	2	3	4	5 6	7 8 9	10	11 12	13	14
Title	Unit	Type	Tier	SEER	Cooling BTU	Heating BTU	Voltage	Factory Installed Option	Feature Code	Major Series
Product #/Letter	P	A	D	4	24	060	K	00	0	K
Descriptions	P = Package	A = AC H = HP D = Dual Fuel G = Gas/Electric	D = Standard J = Dedicated Horizontal R = Mainline Up to 16 SEER	4 = 14 5 = 15	24 = 24K/2 Tons 30 = 30K/2.5 Tons 36 = 36K/3 Tons 42 = 42K/3.5 Tons 48 = 48K/4 Tons 60 = 60K/5 Tons	000 = N/A 040 = 40K 060 = 60K 090 = 90K 115 = 115K 120 = 120K 130 = 127 to 130K	K = 208/230-1-60 H = 208/230-3-60 L = 460-3-60	00 = No Options GC = Low Cab Air Leakage + Tin-Plated Cu Evap Tubes TP = Tin-Plated Evap Tubes LW = Low Cabinet Air Leakage	0 = Standard 1 = Low NOx 2 = Ultra-Low NOx	K



Pre-2023

2023

### Low NOx

#### QuietComfort Series



**PGR5** .....  
Year-Round Air Conditioner  
Two-Stage Operation

**PGS4** .....  
Year-Round Air Conditioner  
Single-Stage Operation

**PDS4** .....  
Dual-Fuel  
Single-Stage Operation

**PGR5** .....  
Year-Round Air Conditioner  
Stainless Steel Heat Exchanger  
Two-Stage Operation

**Obsolete**

**Obsolete**



**PGD4** .....  
Year-Round Air Conditioner  
Single-Stage Operation

**PDD4** .....  
Dual-Fuel  
Single-Stage Operation

**PGD4\*** .....  
Year-Round Air Conditioner  
Stainless Steel Heat Exchanger  
Single-Stage Operation

**PDD4\*** .....  
Dual-Fuel  
Stainless Steel Heat Exchanger  
Single-Stage Operation



#### Performance Series

### Ultra-Low NOx

#### QuietComfort Series



**PGR5** .....  
Year-Round Air Conditioner  
Two-Stage Cooling  
Single-Stage Heating

**PGS4** .....  
Year-Round Air Conditioner  
Two-Stage Cooling  
Single-Stage Heating

**PGR5** .....  
Year-Round Air Conditioner  
Stainless Steel Heat Exchanger  
Two-Stage Cooling  
Single-Stage Heating

**Obsolete**



**PGD4** .....  
Year-Round Air Conditioner  
Single-Stage Operation

**PGD4\*** .....  
Year-Round Air Conditioner  
Stainless Steel Heat Exchanger  
Single-Stage Operation



#### Performance Series

\* Aluminum standard indoor coil