

- UL/CUL recognized - File No. E223730, Guide No. XOKV2
- Non-inherently limited
- Secondary fusing required
- Consult Hartland Controls for specific requirements not shown in catalog.

**WIRE SIZE**

All leads are 18 AWG stranded 2/64" insulation thickness.  
 Standard parts have 12" total length, with 1/2" strip.

**QUICK CONNECT SIZE**

Standard male quick connect terminals are .250 x .032.

**FREQUENCY**

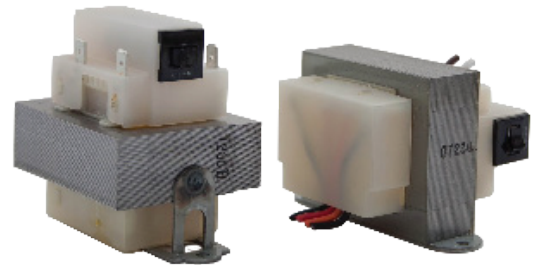
50/60 HZ

**INSULATION SYSTEM**

130°C Class B

**UNIT WEIGHT**

75 VA      2.50 lbs



### PARTIAL LISTING OF AVAILABLE 75 VA TRANSFORMERS

Primary - Secondary Voltage	75 VA Wire Lead 3.2A Link Fuse	75 VA Quick Connect 3.2A Link Fuse	75 VA Wire Lead 3.75 Circuit Breaker	75 VA Quick Connect 3.75 Circuit Breaker
120 - 24	HCT-01J4AF02	HCT-01J4BB07	HCT-01J2AF02	HCT-01J2BB07
240 - 24	HCT-02J4AF02	HCT-02J4BB07	HCT-02J2AF02	HCT-02J2BB07
277 - 24	HCT-03J4AF02	HCT-03J4BB07	HCT-03J2AF02	HCT-03J2BB07
480 - 24	HCT-04J4AF02	HCT-04J4BB07	HCT-04J2AF02	HCT-04J2BB07
120/208/240 - 24	HCT-05H4AF02	HCT-05H4BB07	HCT-05H2AF02	HCT-05H2BB07
120/208/240/480 - 24	HCT-08H4AF02	HCT-08H4BB07	HCT-08H2AF02	HCT-08H2BB07
208/240 - 24	HCT-09J4AF02	HCT-09J4BB07	HCT-09J2AF02	HCT-09J2BB07
380/415 - 24	HCT-51J4AF02	HCT-51J4BB07	HCT-51J2AF02	HCT-51J2BB07
575 - 24	HCT-78J4AF02	HCT-78J4BB07	HCT-78J2AF02	HCT-78J2BB07

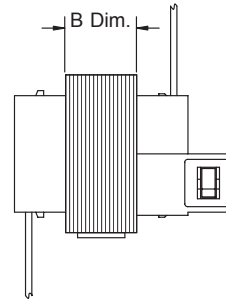
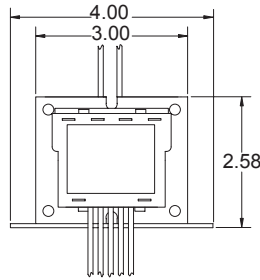
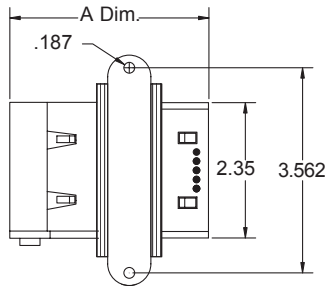
### PRIMARY LEAD FEATURES

Voltage	Common	120	208	240	277	480	575
Color	Black	White	Red	Orange	Brown	Black/Red	Grey
Lead Length	12"	12"	12"	12"	12"	12"	12"
Strip Length	1/2"	1/2"	1/2"	1/2"	1/2"	1/2"	1/2"

### SECONDARY LEAD FEATURES

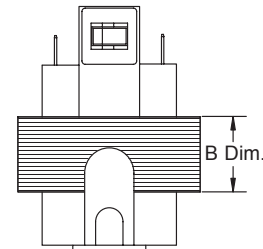
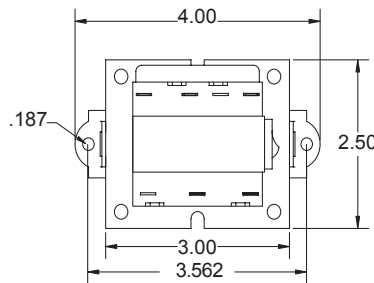
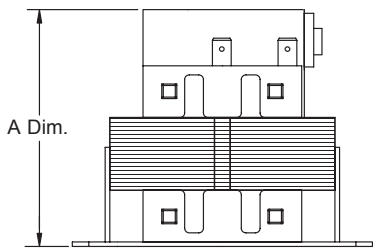
Voltage	Common	24
Color	Blue	Yellow
Lead Length	12"	12"
Strip Length	1/2"	1/2"

### 75 VA Wire Lead Models (inches)



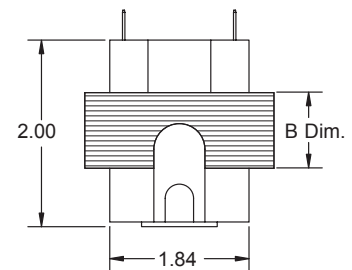
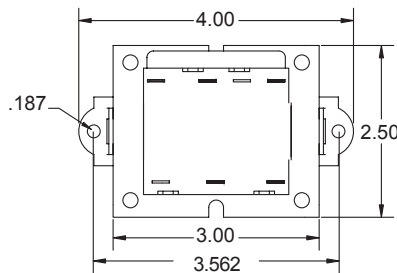
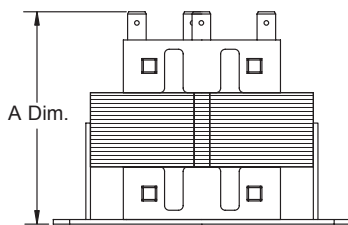
	J Series	H Series
A Dim.	3.22	3.37
B Dim.	1.00	1.15

### 75 VA Quick Connect Models (inches)



	J Series	H Series
A Dim.	3.30	3.45
B Dim.	1.00	1.15

### 40 VA & 50 VA Quick Connect Models (inches)



	J Series	H Series
A Dim.	2.98	3.13
B Dim.	1.00	1.15