

Split System Submittal Data

Wall Mounted Heat Pump

System: 26PEK1U6 Indoor/Outdoor: S-26PK1U6/U-26PE1U6

Panasonic
ideas for life

Job Name: _____
 Location: _____
 Engineer: _____
 Submitted to: _____
 Submitted by: _____
 Reference: _____

Approval: _____
 Date: _____
 Construction: _____
 Unit #: _____
 Drawing #: _____



General Data (at 230V)

Power V/PH/Hz 230/208/1/60
 Circuit Ampacity (A) 15-30 Indoor-Outdoor
 Fuse Size, Max. (A) 15-30 Indoor-Outdoor

Compressor DC Rotary Inverter
 No. used 1
 R.L. Amps - L.R. (A) 12.9-17.5

Outdoor Unit
 Fan type Propeller
 Dia. (in.) - No. Speeds 18-7/64-1
 Type Drive - No. Speeds DC Motor
 No. Poles (RPM) 8 - 800
 No. Motors (W) 1 - 90
 CFM (High) 1765
 F.L. Amps (A) 13.8

Coil Type Aluminum Fin & Copper Pipe
 Fin Type - Pipe Type Slit Plate - Inner Riffled
 Rows - F.P.I. 1 - 15.9
 Face Area (sq.ft.) 7.26
 Tube Size (in.) 3/8"

Indoor Unit
 Fan type Cross Flow
 Dia. & Length (in.) - No. Speeds 3-15/16 L33-15/64 - 1
 No. Speeds 3 & Auto
 No. Poles (RPM, High) 4 - 1224
 No. Motors (W) 1 - 29
 CFM (Hi/Med/Lo) 559/475/390
 Indoor Sound Rating (Hi) (dB-A) 48
 F.L. Amps (A) 0.31

Coil Type Aluminum Plate Fin & Copper Tube
 Fin Type - Pipe Type Slit Plate - Inner Riffled
 Rows - F.P.I. 2 - 24.1
 Face Area (sq.ft.) 2.57
 Tube Size (in.) 9/32"
 Drain Connection Size (in.) 1-1/4"

Refrigerant R410A
 Lbs. - R410a (outdoor unit) 4.19
 Control Electric Expansion Valve
 Connection Flare
 Line Length, Max (ft.) 165
 Lift Difference, Max (ft) 50 (outdoor lower), 100 (outdoor higher)
 Line Size (in. O.D. Discharge) 3/8"
 Line Size (in. O.D. Suction) 5/8"

Dimensions (in.) H x W x D
 Indoor Unit (Uncrated) 12-63/64 x 44-7/8 x 8-31/32
 (Crated) 15-11/32 x 47-27/32 x 11-17/32
 Outdoor Unit (Uncrated) 30-23/32 x 37 x 13-3/8
 (Crated) 34-31/32 x 39-31/32 x 16-3/32

Weight Indoor Outdoor
 Net (lbs.) 40 128
 Shipping (lbs.) 44 148

Shipping Volume Indoor Outdoor
 (cu.ft.) 4.9 13.0

Performance Data @ ARI Standard Conditions (230/208V)

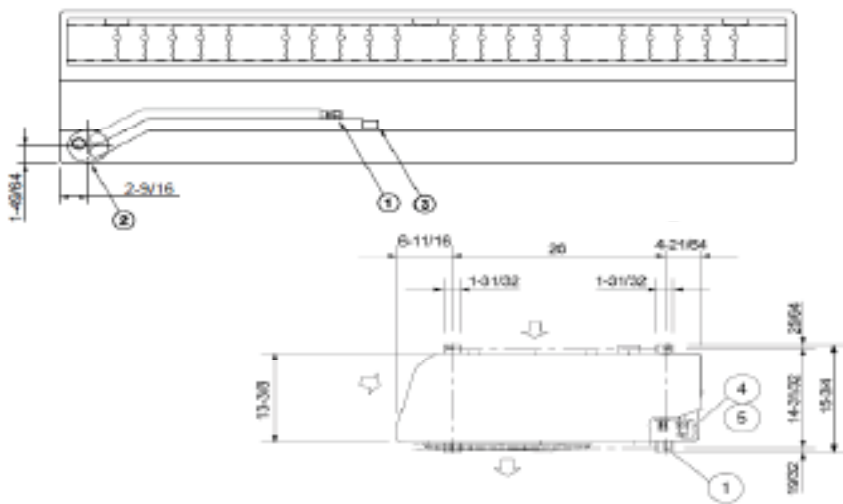
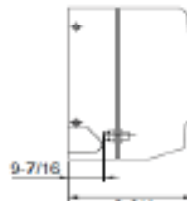
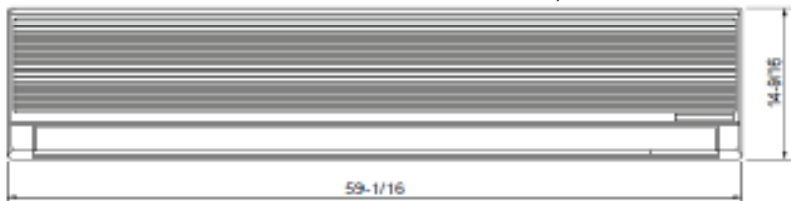
Cooling
 Total Capacity (BTU/H) 25,200 (9,500-25,200)
 Sensible Capacity (BTU/H) 14,790
 Latent Capacity (BTU/H) 10,410
 SEER 14.9
 Dehumidification (Pints/H) 8.1
 Amps (A) 15.3/16.9
 Power Inputs (W) 2,840/2,840
 Outdoor Sound Rating (dB-A) 49

Heating
 Total Capacity (BTU/H) 29,200 (8,000-29,200)
 HSPF 10.2

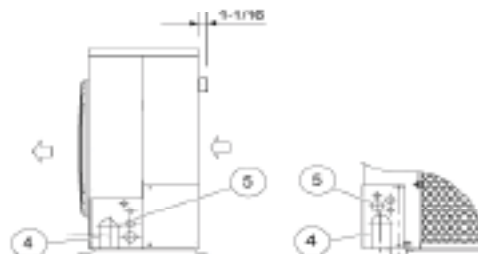
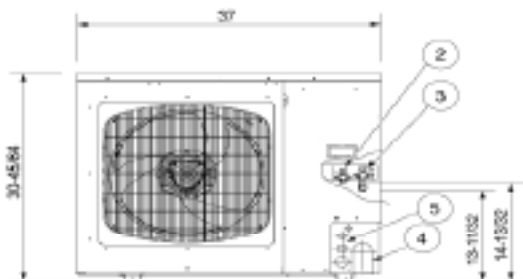
Dimensions

Heating			Options	
Amps	(A)	14/15.5	Refrigerant Line Set	Available
Max. Amps	(A)	14/15.5	Fresh Air Intake	N/A
Power Inputs	(W)	2,620/2,260	Air duct Extension	N/A
Back-up Strip Heater	(KW)	0.00/0.00	Indoor Frame Extension	N/A
Outdoor Sounds Rating	(dB-A)	49	Condensate Drain Pump	Available
			Non-Removeable Remo-con Bracket	Available

Features			Operating Range	
Controls		Microprocessor	Cooling	Indoor Air Intake Temp. Outdoor Air Intake Temp.
Remote Controller	LCD Wireless Type, Temp. Sensor Built In	IC Thermostat	Maximum	95F DB/71F WB 115F DB
Temperature Control		24 Hr. Program	Minimum	67F DB/57F WB 0F DB
Timer		Built-In	Heating	Indoor Air Intake Temp. Outdoor Air Intake Temp.
Night Setback		Manual	Maximum	80F DB/67F WB 75F DB/65F WB
Air Louver	(Horizontal)	Automatic	Minimum	-DB/-WB 5F DB
	(Vertical)			
Power Failure Automatic Restart		Built-In		
Heating/Cooling Automatic Changeover		Built-In		
Self-Diagnosis		Built-In		
Air Filter		Washable, Anti-Mold		



- ① Refrigerant liquid line (3/8") Flare connection
- ② Refrigerant gas line (5/8") Flare connection
- ③ Drain hose OD 1-3/128



Dimensi

Panasonic ideas for life
Panasonic North America
Air Conditioning Division
1690 Roberts Blvd., NW, Suite 110
Kennesaw, GA. 30144
<http://www.panasonic.com/aircon>

