



**50TC 17-30 WEATHERMAKER® SERIES
SINGLE PACKAGE ROOFTOP, COOLING ONLY
VERTICAL AIR FLOW UNITS WITH
OPTIONAL ELECTRIC HEAT
TWO STAGE COOLING CAPACITY CONTROL**

- PERFORMANCE DATA**
- CERTIFIED DIMENSION PRINTS**
- CERTIFIED ROOF CURB DETAILS**



JOB NAME:	LOCATION:	
BUYER:	BUYER PO #:	CARRIER#:
UNIT NUMBER:	MODEL NUMBER:	

PERFORMANCE DATA CERTIFIED BY:

DESCRIPTION

50TC (model sizes 17-30) units are single-packaged dedicated vertical air flow electric cooling units (with field-installed electric heat) that are pre-wired and pre-charged with Puron® (R-410A) HFC refrigerant. The units are factory tested in both heating and cooling modes. These units meet the DOE-2018 (Department of Energy), ASHRAE (American Society of Heating, Refrigerating, and Air-Conditioning Engineers) 90.1-2016 and IECC-2015 (International Energy Conservation Code) minimum efficiency requirements when equipped with the SAV™ (Staged Air Volume) option.

FEATURES

Standard Base Unit (United States Models)

- Puron (R-410A) HFC refrigerant
- EERs up to 11.0
- IEERs up to 12.9 (includes SAV)*
- Rated in accordance with AHRI Standard 340/360
- Designed in accordance with Underwriters Laboratories Standard 1995
- Listed by ETL and ETL-Canada
- ASHRAE 90.1 energy compliant
- Two-stage cooling capacity control
- Non-corrosive composite sloping design; side or center drain condensate pan. Meets ASHRAE Standard 62
- Standard cooling operating range from 30°F up to 115°F (-1°C up to 46°C).
- Dedicated vertical airflow models. No special field kits required.
- Two-inch disposable return air filters
- Provisions for thru-the-bottom power entry capability as standard in an environmentally protected area.
- Single point electric connections
- 24-volt control circuit protected with resettable circuit breaker and 75-VA transformer
- Belt drive, constant torque, permanently lubricated evaporator-fan motor
- Blower bearing extended lubrication line on all sizes
- Totally enclosed condenser motors with permanently lubricated bearings
- Low-pressure and high-pressure switch protection
- Full perimeter base rail with built-in rigging adapters and fork truck slots
- Central terminal board facilitating simple safety circuit troubleshooting and simplified control box arrangement
- High performance belt drive motor with variable pitch pulleys, quick adjust belt system and fan belt protection
- Staged Air Volume (SAV™) system utilizes a Variable Frequency Drive (VFD) to automatically adjust the indoor fan motor for 2 speed indoor fan motor control. Conforms to ASHRAE 90.1 2010 Standard – section 6.4.3.10.b.

Standard Base Unit (Non-United States Models)

- All options listed above including:
 - EERs up to 11.0
 - IEERs up to 12.2 without SAV
 - IEERs up to 12.9 with SAV

Cabinet (All)

- Access panels with easy grip handles
- Innovative, easy starting, no-strip screw feature on unit access panels
- Pre-painted exterior panels and primer-coated interior panels tested to 500 hours salt spray protection
- Fully insulated cabinet

Refrigerant System (All)

- Acutrol™ refrigerant metering system
- Liquid line filter drier on each circuit
- Scroll compressors with internal line-break overload protection
- Copper tube, aluminum fin evaporator coil
- Round Tube/Plate Fin (RTPF) condenser coils on all model sizes or Novation® all aluminum condenser coils available on 17 to 28 sizes.

Standard Warranty (All)

- 5-year standard on all compressor parts
- 5-year standard on all electric heater parts
- 5-year standard on all on Factory-Installed Ultra Low Leak economizer parts
- 1-year standard on all parts
- 3-year standard on all Novation condenser coil parts

* 50TC-29 units are only available with a 2 speed option.

PERFORMANCE DATA

Unit Operating Weight _____ lb Curb Weight _____ lb

COOLING **HEATING (ELECTRIC)**

Gross Total Capacity _____ Btuh Heating Capacity:

 at Condenser Air Temperature _____ F Stage 1 _____ Btuh

Gross Sensible Capacity _____ Btuh Stage 2 _____ Btuh

Compressor Power Input _____ kW Heating Capacity Total _____ Btuh

Indoor Entering: db _____ F / wb _____ F Stage 1 _____ kW

Airflow _____ CFM External Static Pressure _____ in. wg Stage 2 _____ kW

Indoor Fan Motor Size _____ HP Heating Capacity Total _____ Btuh

Exhaust Fan Motor Size _____ HP

ELECTRICAL DATA

Power Supply to Unit _____

Volts _____

Phase _____ Hz

Maximum Circuit Amps _____

Maximum Overcurrent Protection _____

SUBMITTAL DATA

Job Name _____

Architect _____

Engineer _____

Contractor _____

Unit Designation _____



Use of the AHRI Certified TM Mark indicates a manufacturer's participation in the program For verification of certification for individual products, go to www.ahridirectory.org.

FACTORY-INSTALLED OPTIONS

Economizer with DRY BULB Sensing and Barometric Relief

Low Leak Air Dampers —

- Models with W7212 controller provides standard non-diagnostic control (EconoMiSer® IV system).
- Models with W7220 controller meet California Title 24-2016 (Section 120.2) for Fault Detection and Diagnostic (FDD) requirements (EconoMiSer X system).
- Models with RTU Open controller meet California Title 24-2016 (Section 120.2) Fault Detection and Diagnostic (FDD) requirements (EconoMiSer 2 system).
- Models with PremierLink™ controller. PremierLink controller does not meet California Title 24-2016 (Section 120.2) Fault Detection and Diagnostic (FDD) requirement (EconoMiSer 2 system).

Economizer with ENTHALPY Sensing and Barometric Relief

Low Leak Air Dampers —

- Models with W7212 controller provides standard non-diagnostic control (EconoMiSer® IV system).
- Models with W7220 controller meet California Title 24-2016 (Section 120.2) Fault Detection and Diagnostic (FDD) requirements (EconoMiSer X system).
- Models with RTU Open controller meet California Title 24-2016 (Section 120.2) Fault Detection and Diagnostic (FDD) requirements (EconoMiSer 2 system).
- Models with PremierLink™ controller. PremierLink controller does not meet California Title 24-2016 (Section 120.2) Fault Detection and Diagnostic (FDD) requirement (EconoMiSer 2 system).

Economizer with DRY BULB Sensing and Barometric Relief

ULTRA LOW LEAK Air Dampers —

- Models with W7220 controller meet California Energy Commission Title 24-2016 perspective section 140.4 (damper leakage etc.), and mandatory section 120.2.i for Fault Detection and Diagnostic controls. Economizers meet ASHRAE 90.1-2016 damper leakage requirements as stated in section 6.5.1.1.4 and Table 6.4.3.4.3, and meet 2016 Fault Detection and Diagnosis requirements in section 6.4.3.12. For outside air, return, and relief air damper leakage requirements economizers meet IECC 2012 section C402.4.5.2 and, IECC 2015 sections C403.2.4.3 and C403.3.3.5 and IECC 2015 section C403.2.4.7 for Fault Detection and Diagnostic requirements.
NOTE: IECC 2015 section C403.2.4.7.1 requires differential return air sensor, which must be ordered separately.
Outside air, return air, and relief air (volume) dampers are AMCA rated — plus 5 year limited parts warranty (EconoMiSer X system).
- Models with RTU Open meet California Energy Commission Title 24-2016 perspective section

140.4 (damper leakage etc.) and mandatory section 120.2.i for Fault Detection and Diagnostic requirements. Economizers meet ASHRAE 90.1-2016 damper leakage requirements as stated in section 6.5.1.1.4 and Table 6.4.3.4.3, and meet 2016 Fault Detection and Diagnosis requirements in section 6.4.3.12. Economizers meet IECC 2012 section C402.4.5.2 and, IECC 2015 sections C403.2.4.3 and C403.3.3.5 for outside air, return air, and relief air damper leakage requirements and IECC 2015 section C403.2.4.7 for Fault Detection and Diagnostic requirements.

NOTE: IECC 2015 section C403.2.4.7.1 requires differential return air sensor, which must be ordered separately.

Outside air, return air, and relief air (volume) dampers are AMCA rated — plus 5 year limited parts warranty (EconoMiSer 2 system).

Economizer with ENTHALPY Sensing and Barometric Relief

ULTRA LOW LEAK Air Dampers —

- Models with W7220 controller meet California Energy Commission Title 24-2016 perspective section 140.4 (damper leakage etc.), and mandatory section 120.2.i for Fault Detection and Diagnostic controls. Economizers meet ASHRAE 90.1-2016 damper leakage requirements as stated in section 6.5.1.1.4 and Table 6.4.3.4.3, and meet 2016 Fault Detection and Diagnosis requirements in section 6.4.3.12. For outside air, return, and relief air damper leakage requirements economizers meet IECC 2012 section C402.4.5.2 and, IECC 2015 sections C403.2.4.3 and C403.3.3.5 and IECC 2015 section C403.2.4.7 for Fault Detection and Diagnostic requirements.
NOTE: IECC 2015 section C403.2.4.7.1 requires differential return air sensor, which must be ordered separately.
Outside air, return air, and relief air (volume) dampers are AMCA rated — plus 5 year limited parts warranty (EconoMiSer X system).
- Models with RTU Open meet California Energy Commission Title 24-2016 perspective section 140.4 (damper leakage etc.) and mandatory section 120.2.i for Fault Detection and Diagnostic requirements. Economizers meet ASHRAE 90.1-2016 damper leakage requirements as stated in section 6.5.1.1.4 and Table 6.4.3.4.3, and meet 2016 Fault Detection and Diagnosis requirements in section 6.4.3.12. Economizers meet IECC 2012 section C402.4.5.2 and, IECC 2015 sections C403.2.4.3 and C403.3.3.5 for outside air, return air, and relief air damper leakage requirements and IECC 2015 section C403.2.4.7 for Fault Detection and Diagnostic requirements.
NOTE: IECC 2015 section C403.2.4.7.1 requires differential return air sensor, which must be ordered separately.
Outside air, return air, and relief air (volume) dampers are AMCA rated — plus 5 year limited parts warranty (EconoMiSer 2 system).

FACTORY-INSTALLED OPTIONS (CONT)

Standard Base Unit (United States Models)

- RTU Open multi-protocol controller communicates to BACnet*, Modbus†, LonWorks**, and Johnson N2 protocols.
- CCN Direct Digital Control (DDC) - Premier-Link††
- Two-position motorized outdoor air damper (not available with SAV™ (Staged Air Volume) 2 speed fan models)††
- 25% Manual outdoor air damper††
- Humidi-MiZer® adaptive dehumidification system available for sizes 17 – 28. Unit must be equipped with RTPF condenser coils.
- Non-fused disconnect
- Powered 115-volt convenience outlet
- Non-powered 115-volt convenience outlet
- Power exhaust - centrifugal fan design
- Medium and high static motor options

- Return air smoke detector
- Supply air smoke detector
- CO₂ sensor
- Condenser hail guard - louvered style
- Special coating protection for evaporator and condenser coils
- Hinged access panels
- Condensate overflow Switch

Standard Base Unit (Non-United States Models)

- Staged Air Volume (SAV™) 2-speed fan system

Optional Warranties

- Complete unit parts only, up to 5 years
- Complete unit parts and labor, up to 5 years

Many other optional warranties are available. See the Commercial Start-Up and Optional Extended Warranty Price pages for further information.

* BACnet is a registered trademark of ASHRAE (American Society of Heating, Refrigerating and Air-Conditioning Engineers).

† Modbus is a registered trademark of Schneider Electric.

** LonWorks is a registered trademark of Echelon Corporation.

†† Not compatible with SAV (2 speed indoor fan models).

FIELD-INSTALLED ACCESSORIES

☐ Economizer with DRY BULB Sensing and Barometric Relief

Low Leak Air Dampers —

- Models with W7212 controller provides standard non-diagnostic control. EconoMi\$er® IV.
- Models with W7220 controller meets California Title 24-2016 Section 120.2.i for Fault Detection and Diagnostic (FDD) requirements. EconoMi\$er X.
- Models with RTU Open controller meets California Title 24-2016 Section 120.2.i Fault Detection and Diagnostic (FDD) requirements (EconoMi\$er 2 system).
- Models with PremierLink™ controller. PremierLink controller does not meet California Title 24-2016 Section 120.2.i Fault Detection and Diagnostic (FDD) requirement (EconoMi\$er 2 system).

☐ Economizer with ENTHALPY Sensing and Barometric Relief

Low Leak Air Dampers —

- Models with W7212 controller provides standard non-diagnostic control. EconoMi\$er IV.
- Models with W7220 controller meets California Title 24-2016 Section 120.2.i Fault Detection and Diagnostic (FDD) requirements. EconoMi\$er X.
- Models with RTU Open controller meets California Title 24-2016 Section 120.2.i Fault Detection and Diagnostic (FDD) requirements (EconoMi\$er 2 system).
- Models with PremierLink controller. PremierLink controller does not meet California Title 24-2016 Section 120.2.i Fault Detection and Diagnostic (FDD) requirement (EconoMi\$er 2 system).

☐ Economizer with DRY BULB Sensing and Barometric Relief

ULTRA LOW LEAK Air Dampers —

- Models with W7220 controller meet California Energy Commission Title 24-2016 perspective section 140.4 (damper leakage etc.), and mandatory section 120.2.i for Fault Detection and Diagnostic controls. Economizers meet ASHRAE 90.1-2016 damper leakage requirements as stated in section 6.5.1.1.4 and Table 6.4.3.4.3, and meet 2016 Fault Detection and Diagnosis requirements in section 6.4.3.12. For outside air, return, and relief air damper leakage requirements economizers meet IECC 2012 section C402.4.5.2 and, IECC 2015 sections C403.2.4.3 and C403.3.3.5 and IECC 2015 section C403.2.4.7 for Fault Detection and Diagnostic requirements.
NOTE: IECC 2015 section C403.2.4.7.1 requires differential return air sensor, which must be ordered separately.
Outside air, return air, and relief air (volume) dampers are AMCA rated (EconoMi\$er X system).

- Models with RTU Open meet California Energy Commission Title 24-2016 perspective section 140.4 (damper leakage etc.) and mandatory section 120.2.i for Fault Detection and Diagnostic requirements. Economizers meet ASHRAE 90.1-2016 damper leakage requirements as stated in section 6.5.1.1.4 and Table 6.4.3.4.3, and meet 2016 Fault Detection and Diagnosis requirements in section 6.4.3.12. Economizers meet IECC 2012 section C402.4.5.2 and, IECC 2015 sections C403.2.4.3 and C403.3.3.5 for outside air, return air, and relief air damper leakage requirements and IECC 2015 section C403.2.4.7 for Fault Detection and Diagnostic requirements.

NOTE: IECC 2015 section C403.2.4.7.1 requires differential return air sensor, which must be ordered separately.

Outside air, return air, and relief air (volume) dampers are AMCA rated — plus 5 year limited parts warranty (EconoMi\$er 2 system).

☐ Economizer with ENTHALPY Sensing and Barometric Relief

ULTRA LOW LEAK Air Dampers —

- Models with W7220 controller meet California Energy Commission Title 24-2016 perspective section 140.4 (damper leakage etc.), and mandatory section 120.2.i for Fault Detection and Diagnostic controls. Economizers meet ASHRAE 90.1-2016 damper leakage requirements as stated in section 6.5.1.1.4 and Table 6.4.3.4.3, and meet 2016 Fault Detection and Diagnosis requirements in section 6.4.3.12. For outside air, return, and relief air damper leakage requirements economizers meet IECC 2012 section C402.4.5.2 and, IECC 2015 sections C403.2.4.3 and C403.3.3.5 and IECC 2015 section C403.2.4.7 for Fault Detection and Diagnostic requirements.

NOTE: IECC 2015 section C403.2.4.7.1 requires differential return air sensor, which must be ordered separately.

Outside air, return air, and relief air (volume) dampers are AMCA rated (EconoMi\$er X system).

- Models with RTU Open meet California Energy Commission Title 24-2016 perspective section 140.4 (damper leakage etc.) and mandatory section 120.2.i for Fault Detection and Diagnostic requirements. Economizers meet ASHRAE 90.1-2016 damper leakage requirements as stated in section 6.5.1.1.4 and Table 6.4.3.4.3, and meet 2016 Fault Detection and Diagnosis requirements in section 6.4.3.12. Economizers meet IECC 2012 section C402.4.5.2 and, IECC 2015 sections C403.2.4.3 and C403.3.3.5 for outside air, return air, and relief air damper leakage requirements and IECC 2015 section C403.2.4.7 for Fault Detection and Diagnostic requirements.

NOTE: IECC 2015 section C403.2.4.7.1 requires differential return air sensor, which must be ordered separately.

Outside air, return air, and relief air (volume) dampers are AMCA rated — plus 5 year limited parts warranty (EconoMi\$er 2 system).

FIELD-INSTALLED ACCESSORIES (CONT)

- Display Kit for Variable Frequency Drive (VFD), Staged Air Volume System. Allows additional set up and diagnostics of the unit VFD controller. Can be unit mounted or used with any other compatible VFD model as a reusable device.
 - Electric heater(s)
 - Single point kit
 - Power exhaust - centrifugal fan design
 - Two-position motorized outdoor air damper*
 - 25% Manual outdoor air damper*
 - Roof curb - 14 inch (356mm) tall
 - Roof curb - 24 inch (610mm) tall
 - Adapter Curb (for sizes 17-28 only) - Adapts to Carrier DP/DR, TJ, HJ, TM, PG roof curbs
 - Condenser hail guard - louvered style
 - Phase monitor (loss of phase/phase reversal)
 - Winter start kit, down to 25°F (-4°C)
 - Low ambient head pressure controller, down to -20°F (-29°C)
 - Time Guard II compressor anti-cycle protection
 - Four inch filter tracks
 - Return Air smoke detector
 - Supply Air smoke detector
 - Thermostats and Sensors
 - Non-powered 115-volt (20 amp) convenience outlet
 - Horn/Strobe annunciator
- Economizer Sensors
- Single dry bulb control
 - Differential dry bulb control
 - Single enthalpy control
 - Differential enthalpy control
 - CO₂ — wall mounted
 - CO₂ — duct mounted
 - CO₂ — unit mounted

* Not available with SAV (2-speed fan models).

CERTIFIED DIMENSION PRINT

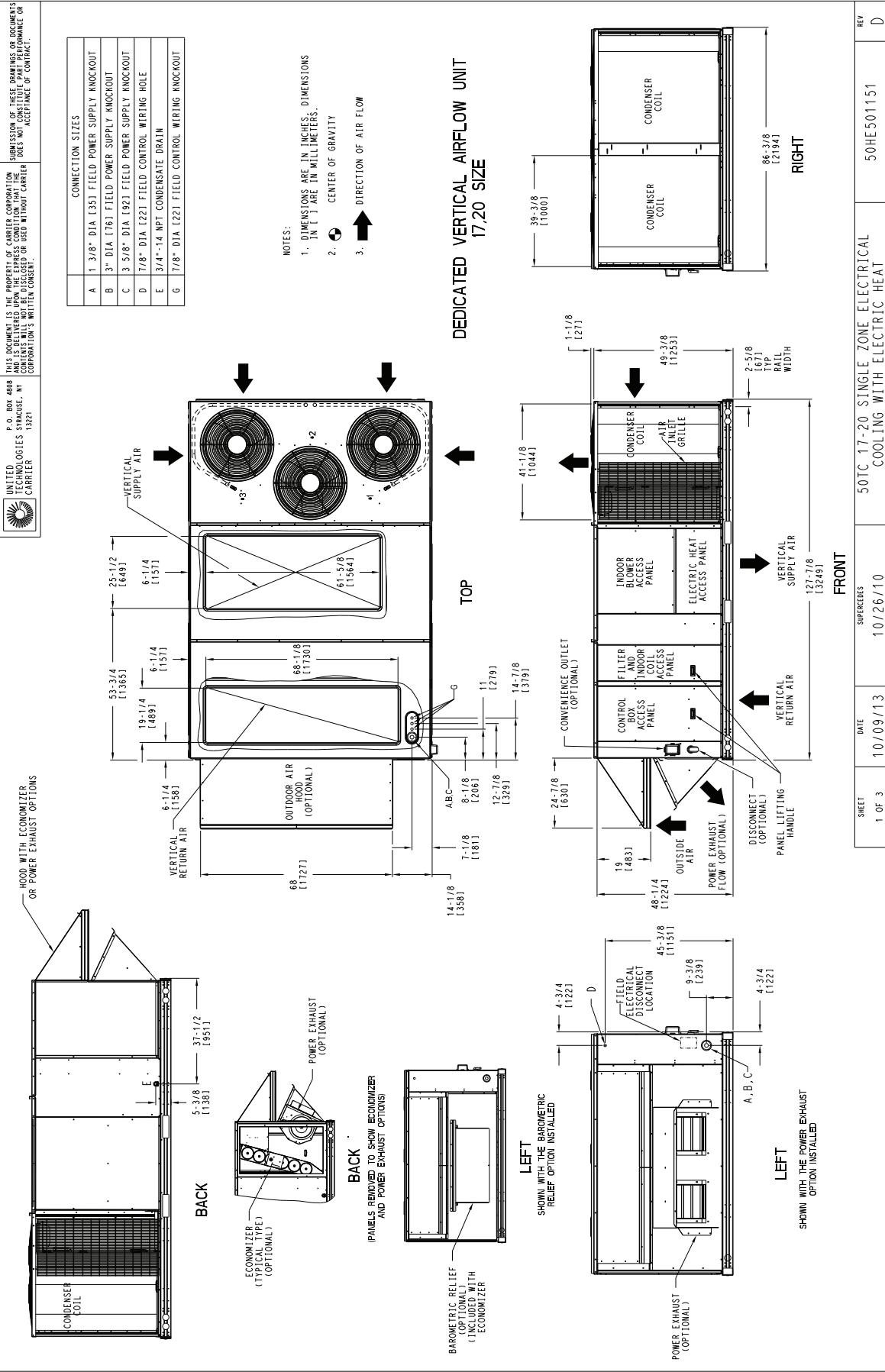



Fig. 1 — 50TC**17 and 20 Dimensional Drawing

SHEET	DATE	SUPERSEDES	REV
1 OF 3	10/09/13	10/26/10	D
50TC 17-20 SINGLE ZONE ELECTRICAL COOLING WITH ELECTRIC HEAT		50HES01151	

CERTIFIED DIMENSION PRINT


UNITED TECHNOLOGIES SYRACUSE, NY
CARRIER
 P. O. BOX 4008
 13221

THIS DOCUMENT IS THE PROPERTY OF CARRIER CORPORATION
 AND IS LOANED TO YOU UNDER THE EXPRESS CONDITION THAT THE
 INFORMATION CONTAINED HEREIN IS TO BE USED WITHOUT CARRIER
 CORPORATION'S WRITTEN CONSENT.

SUBMISSION OF THESE DRAWINGS OR DOCUMENTS
 DOES NOT CONSTITUTE PART PERFORMANCE OR
 ACCEPTANCE OF CONTRACT.

SHEET 3 OF 3
 DATE 10/09/13
 SUPERSEDES 10/26/10
 50TC 17-20 SINGLE ZONE ELECTRICAL
 COOLING WITH ELECTRIC HEAT
 50HE501151
 REV D

UNIT	STD UNIT WEIGHT		CORNER WEIGHT (A)		CORNER WEIGHT (B)		CORNER WEIGHT (C)		CORNER WEIGHT (D)		C. G.								
	LEBS	KG	LEBS	KG	LEBS	KG	LEBS	KG	LEBS	KG	X	Y	Z	X	Y	Z	X	Y	Z
50TC17	1627	717	403	182	412	187	446	203	436	198	44	3/4	16.453	64	3/4	16.453	16	1/2	14.19
50TC20	1712	718	407	183	416	189	450	204	440	200	44	3/4	16.453	64	3/4	16.453	16	1/2	14.19
50TC17	1688	822	415	189	432	224	488	222	472	187	42	29/32	10.901	69	1/4	11.159	16	1/2	14.19
50TC18	1793	815	375	170	419	191	528	240	472	214	46	1/2	14.19	67	3/8	11.117	16	1/2	14.19
50TC20	1823	829	419	190	496	226	493	224	475	189	42	29/32	10.901	69	1/4	11.159	16	1/2	14.19

R1PF - ROUND TUBE, PLATE FIN (COPPER/ALUM)
 MCH - NOVIATION (ALUM/ALUM)

* STANDARD UNIT WEIGHT IS WITHOUT ELECTRIC HEAT AND WITHOUT PACKAGING.
 FOR OTHER OPTIONS AND ACCESSORIES, REFER TO THE PRODUCT DATA CATALOG.

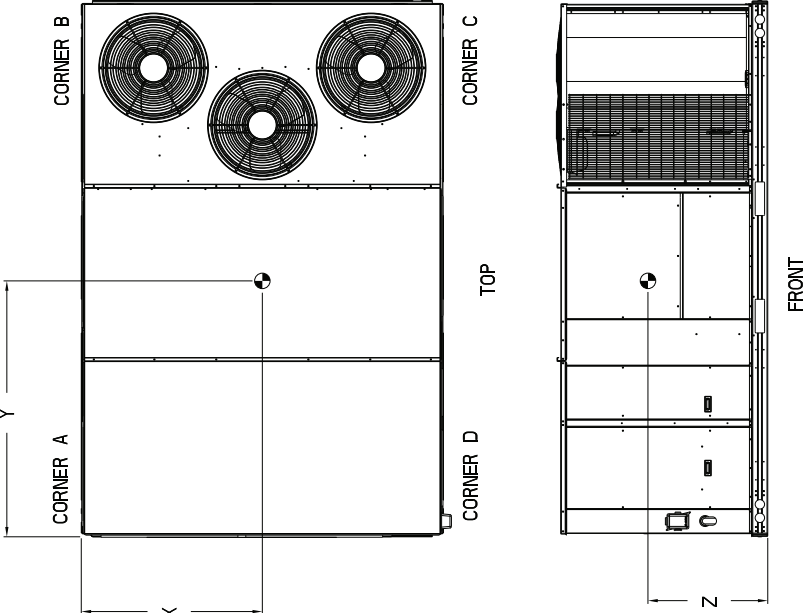


Fig. 2 — 50TC17 and 20 Corner Weights**

CERTIFIED DIMENSION PRINT

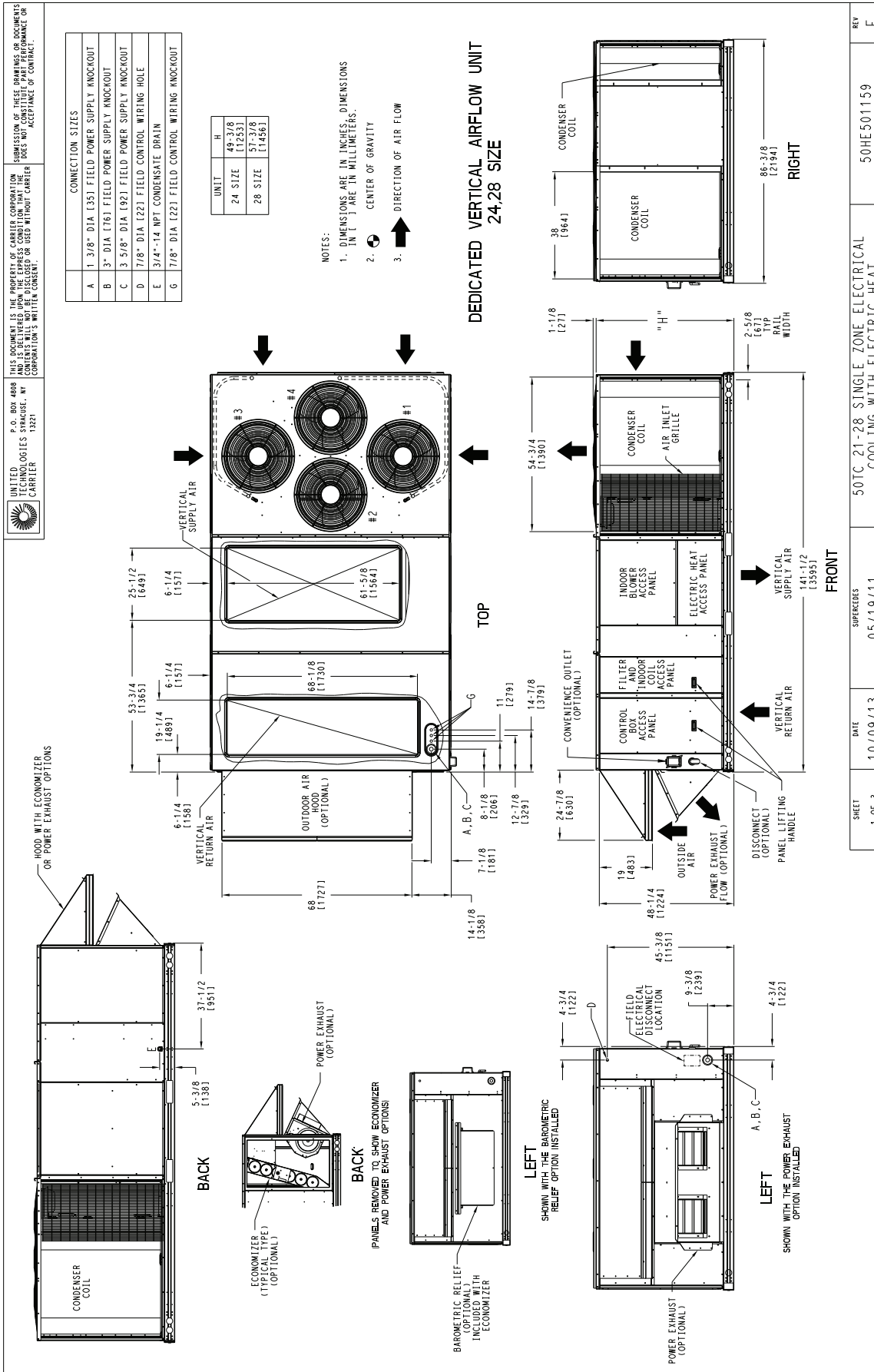


Fig. 3 — 50TC**24 and 28 Dimensional Drawing

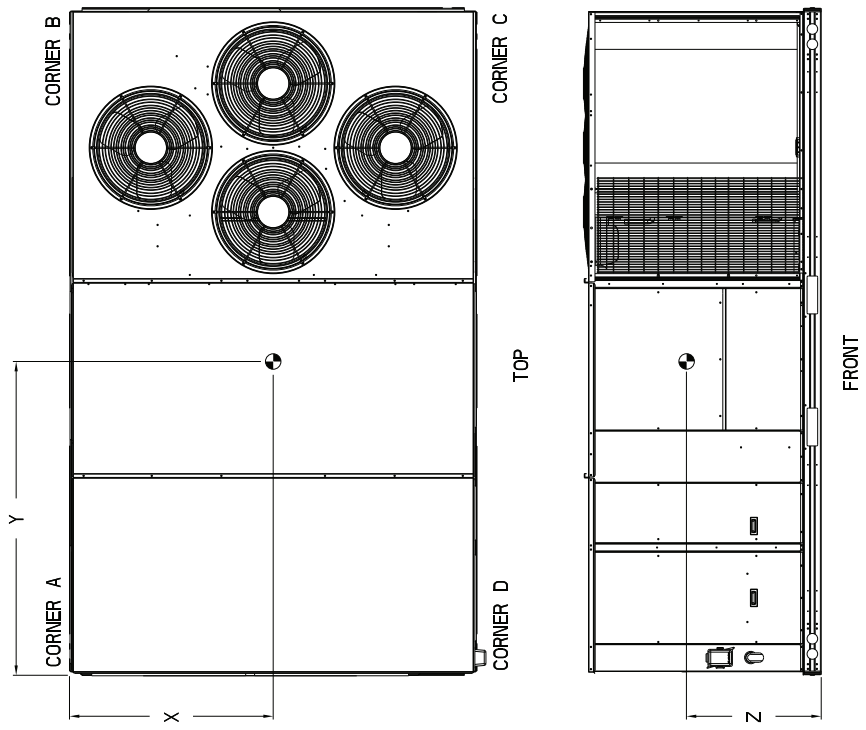
SHEET 1 OF 3	DATE 10/09/13	SUPERSEDES 05/19/11	50TC 21-28 SINGLE ZONE ELECTRICAL COOLING WITH ELECTRIC HEAT	REV 50HE501159	F
-----------------	------------------	------------------------	---	-------------------	---

CERTIFIED DIMENSION PRINT


 UNITED TECHNOLOGIES SYRACUSE, NY
 CARRIER 13221
 THIS DOCUMENT IS THE PROPERTY OF CARRIER CORPORATION AND IS DELIVERED UNDER THE EXPRESS CONDITION THAT THE USER DOES NOT CONSTITUTE PART PERFORMANCE OR ACCEPTANCE OF CONTRACT.

UNIT	STD. UNIT WEIGHT *		CORNER WEIGHT (A)		CORNER WEIGHT (B)		CORNER WEIGHT (C)		CORNER WEIGHT (D)		C.G.					
	LBS.	KG.	LBS.	KG.	LBS.	KG.	LBS.	KG.	LBS.	KG.	X	Y	Z			
50TC24	1862	846	359	163	506	230	583	265	414	188	46 1/8	[1172]	82 7/8	[2105]	16 1/2	[419]
50TC28	1991	905	384	174	541	246	624	284	443	201	46 1/8	[1172]	82 7/8	[2105]	19	[483]
50TC24	2003	911	445	202	367	167	557	253	547	249	47 1/2	[1207]	71 1/4	[1810]	16 1/2	[419]
50TC24	1973	897	532	242	522	237	456	207	464	211	40 5/32	[1020]	70	[1778]	16 1/2	[419]
50TC25	2148	976	510	232	525	238	564	257	549	250	44 5/8	[1133]	71 5/8	[1819]	19	[483]
50TC28	2098	954	545	248	539	245	504	229	510	232	41 21/32	[1038]	70 1/4	[1784]	19	[483]

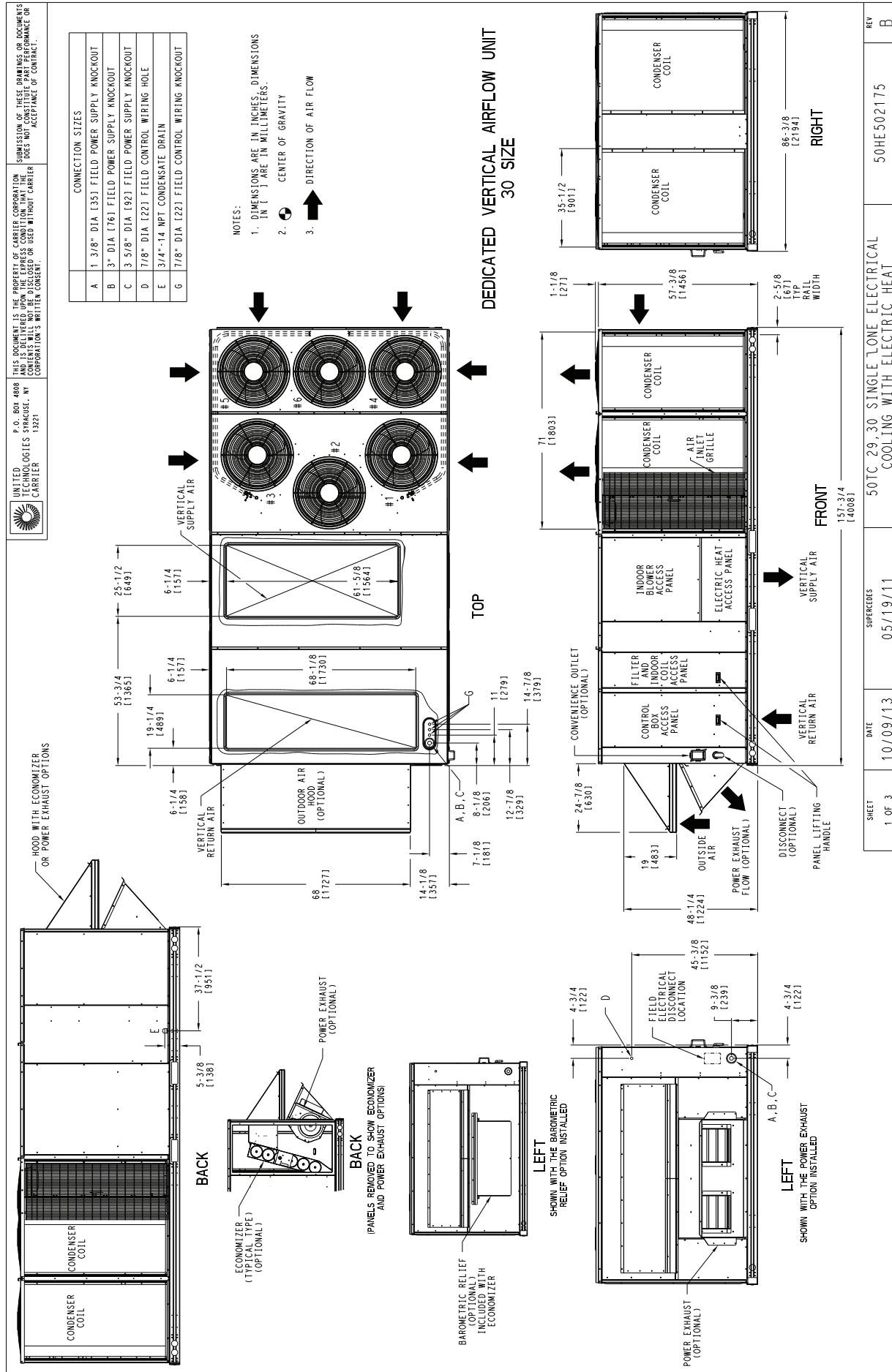
* STANDARD UNIT WEIGHT IS WITHOUT ELECTRIC HEAT AND WITHOUT PACKAGING. FOR OTHER OPTIONS AND ACCESSORIES, REFER TO THE PRODUCT DATA CATALOG.



SHEET	DATE	SUPERSEDES	REV
3 OF 3	10/09/13	05/19/11	F
50TC 21-28 SINGLE ZONE ELECTRICAL COOLING WITH ELECTRIC HEAT		50HE501159	

Fig. 4 — 50TC24 and 28 Corner Weights**

CERTIFIED DIMENSION PRINT



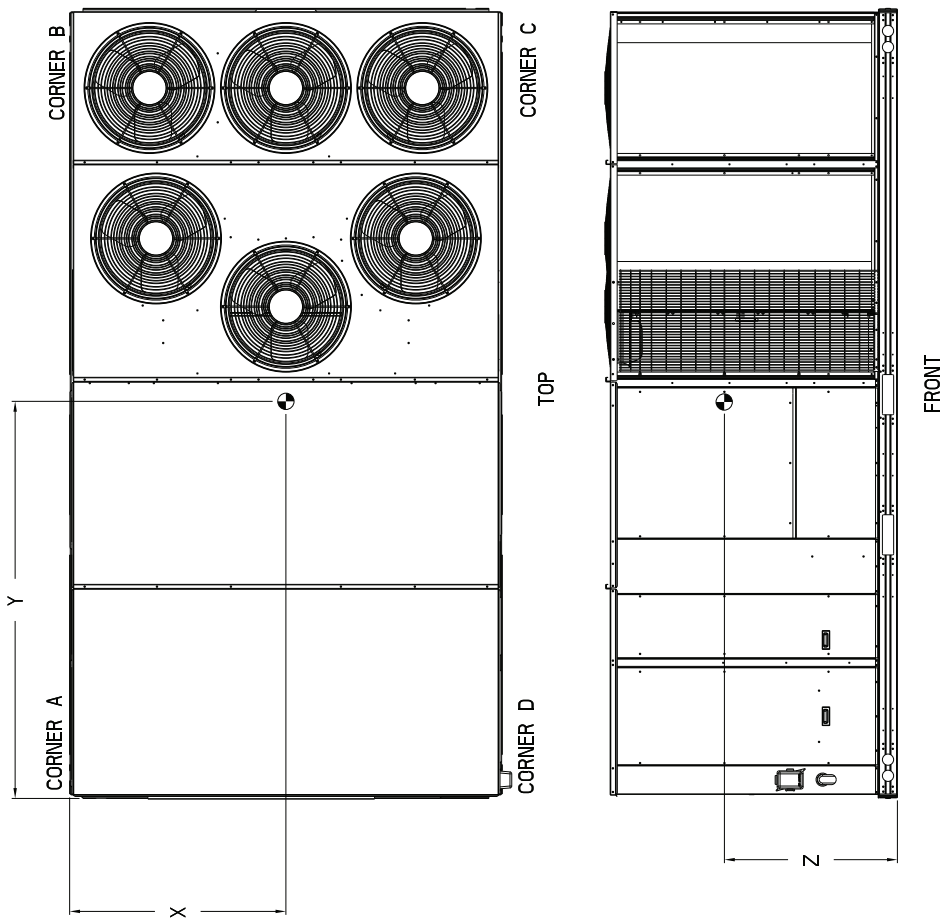
CERTIFIED DIMENSION PRINT


 UNITED TECHNOLOGIES SYPACUSSE, NY CORPORATION'S WRITTEN CONSENT.
 P.O. BOX 4808
 13271

THIS DOCUMENT IS THE PROPERTY OF CARRIER CORPORATION AND IS DELIVERED UPON THE EXPRESS CONDITION THAT THE USER SHALL NOT REPRODUCE OR USE WITHOUT CARRIER CORPORATION'S WRITTEN CONSENT.
 SUBMISSION OF THESE DRAWINGS OR DOCUMENTS DOES NOT CONSTITUTE PART PERFORMANCE OR ACCEPTANCE OF CONTRACT.

UNIT	CORNER WEIGHT (A)		CORNER WEIGHT (B)		CORNER WEIGHT (C)		CORNER WEIGHT (D)		C.G.									
	LBS.	KG.	LBS.	KG.	LBS.	KG.	LBS.	KG.	X	Y								
50TC29	2193	997	545	248	528	240	551	251	589	259	44	[1118]	77	1/2	[1969]	19	[483]	7
50TC30	2513	1142	664	302	566	257	591	269	693	315	44	[1118]	72	1/2	[1842]	19	[483]	

* STANDARD UNIT WEIGHT IS WITHOUT ELECTRIC HEAT AND WITHOUT PACKAGING.
 FOR OTHER OPTIONS AND ACCESSORIES, REFER TO THE PRODUCT DATA CATALOG.

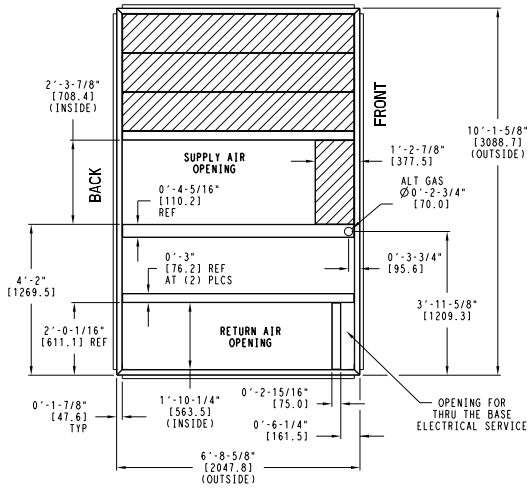


SHEET	DATE	SUPERCEDES	REV
3 OF 3	10/09/13	50TC 29,30 SINGLE ZONE ELECTRICAL COOLING WITH ELECTRIC HEAT	B
	05/19/11	50HE502175	

Fig. 6 — 50TC30 Corner Weights**

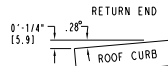
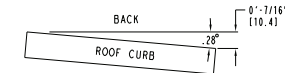
CERTIFIED ROOF CURB DETAILS

UNIT SIZE	"A"	ROOF CURB ACCESSORY
17,20	1'-2" [356.0] 2'-0" [610.0]	CRRFCURB045A00 CRRFCURB046A00



- NOTES:
- 1 ROOF CURB ACCESSORY IS SHIPPED UNASSEMBLED.
 - 2 DIMENSIONS IN () ARE IN MILLIMETERS.
 - 3 ROOF CURB GALVANIZED STEEL.
 - 4 ATTACH DUCTWORK TO CURB (FLANGES ON DUCT REST ON CURB)
 - 5 SERVICE CLEARANCE 4 FT ON EACH SIDE

➔ DIRECTION OF AIR FLOW



MAX CURB LEVELING TOLERANCES

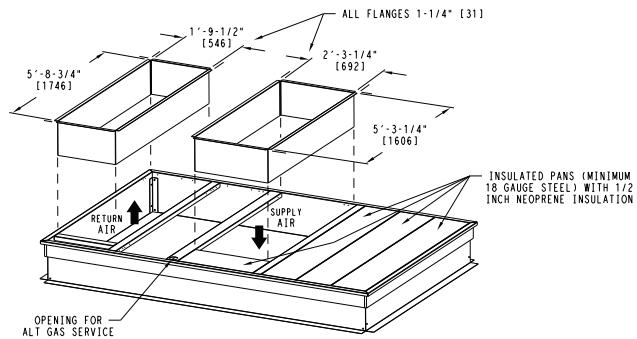
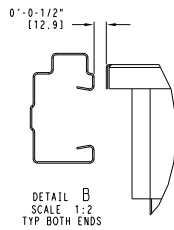
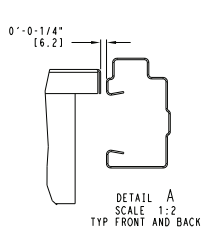
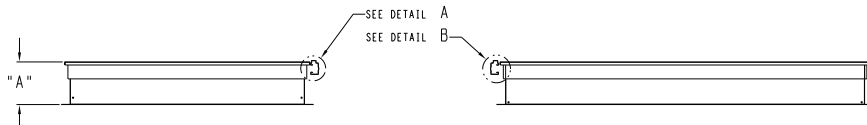
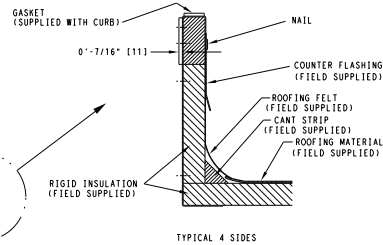
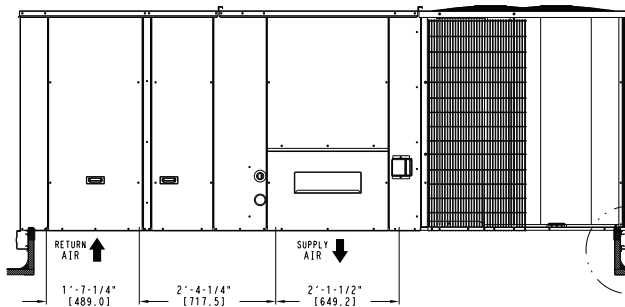
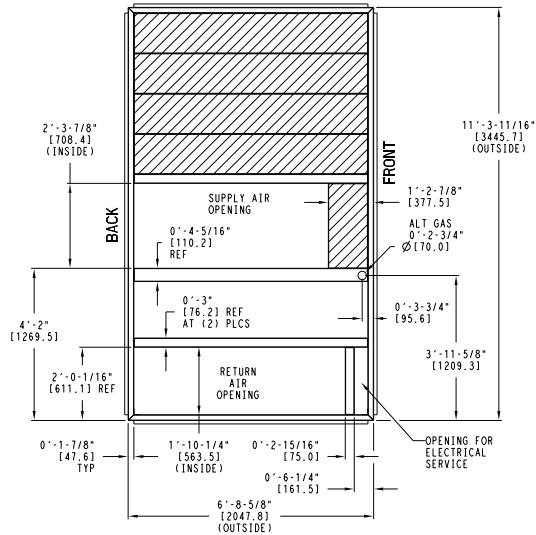


Fig. 7 — 50TC**17 and 20 Roof Curb Details

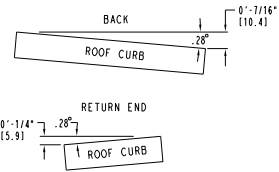
CERTIFIED ROOF CURB DETAILS

UNIT SIZE	"A"	ROOF CURB ACCESSORY
24, 28	1'-2" (356.0) 2'-0" (610.0)	CRRFCURB047A00 CRRFCURB048A00

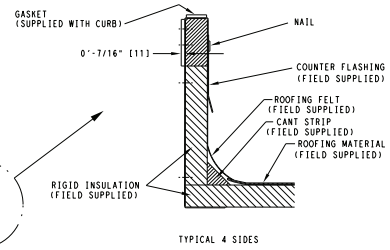
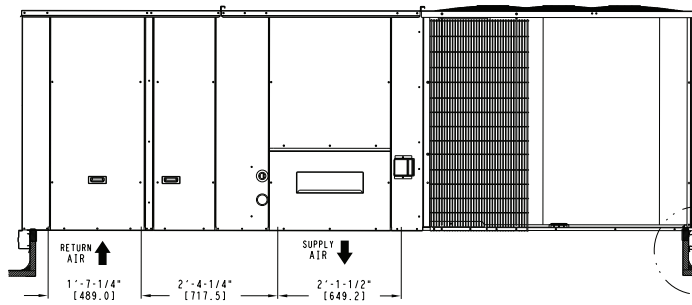


- NOTES:
- 1 ROOF CURB ACCESSORY IS SHIPPED UNASSEMBLED.
 - 2 DIMENSIONS IN [] ARE IN MILLIMETERS.
 - 3 ROOF CURB GALVANIZED STEEL.
 - 4 ATTACH DUCTWORK TO CURB (FLANGES ON DUCT REST ON CURB)
 - 5 SERVICE CLEARANCE 4 FT ON EACH SIDE

➔ DIRECTION OF AIR FLOW



MAX CURB LEVELING TOLERANCES



TYPICAL 4 SIDES

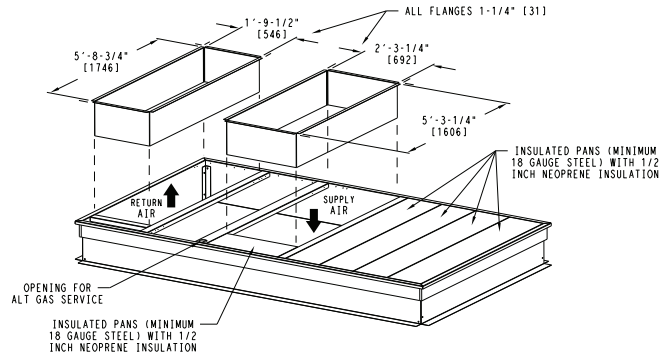
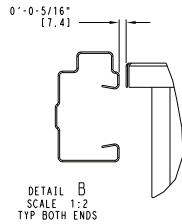
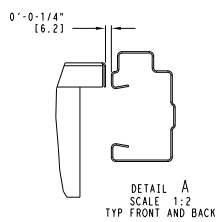
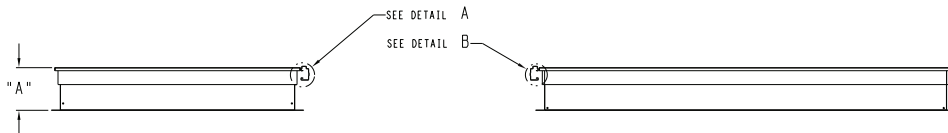
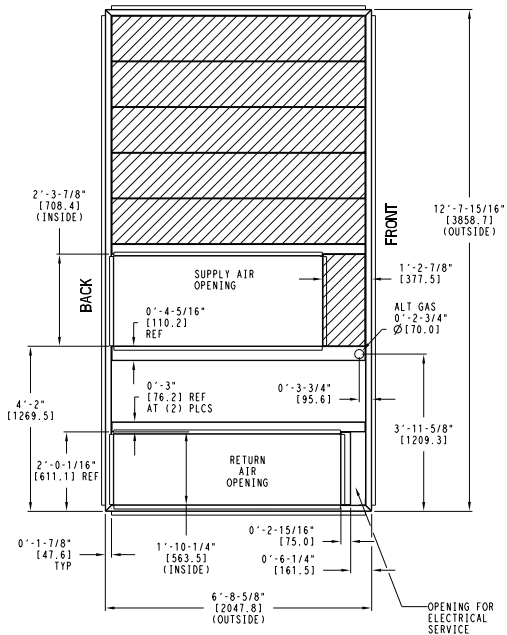


Fig. 8 — 50TC**24 and 28 Roof Curb Details

CERTIFIED ROOF CURB DETAILS

UNIT SIZE	"A"	ROOF CURB ACCESSORY
30	1'-2" [356.0] 2'-0" [610.0]	CRRFCURB049A00 CRRFCURB050A00



- NOTES:
- 1 ROOF CURB ACCESSORY IS SHIPPED UNASSEMBLED.
 - 2 BOLT HEADS TO BE ON INSIDE OF FLANGE. CLEARANCE IS (11) 0-0-7/16" TYP ALL CORNERS.
 - 3 DIMENSIONS IN () ARE IN MILLIMETERS.
 - 4 ROOF CURB GALVANIZED STEEL.
 - 5 ATTACH DUCTWORK TO CURB (FLANGES ON DUCT REST ON CURB)
 - 6 SERVICE CLEARANCE 4 FF ON EACH SIDE
 - 7 GAS SERVICE PLATE IS PART OF A SEPARATELY SHIPPED ACCESSORY PACKAGE.
 - 8 GAS SERVICE PLATE CAN BE USED WITH EITHER ACCESSORY ROOF CURB.

➔ DIRECTION OF AIR FLOW

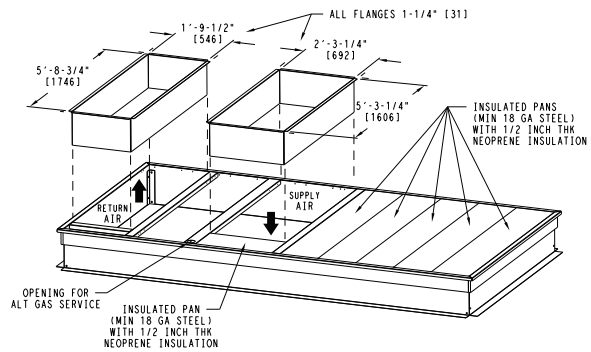
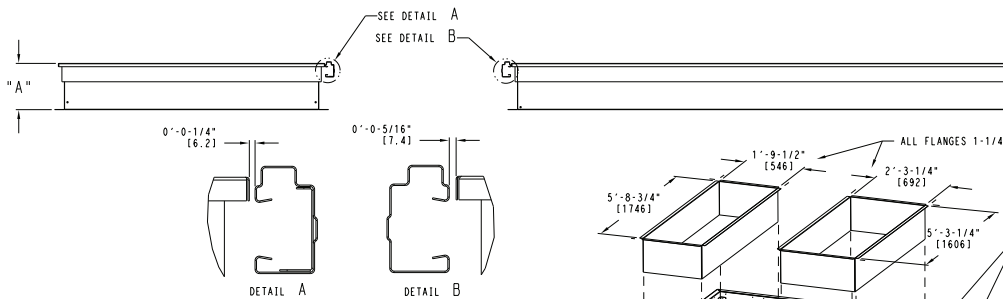
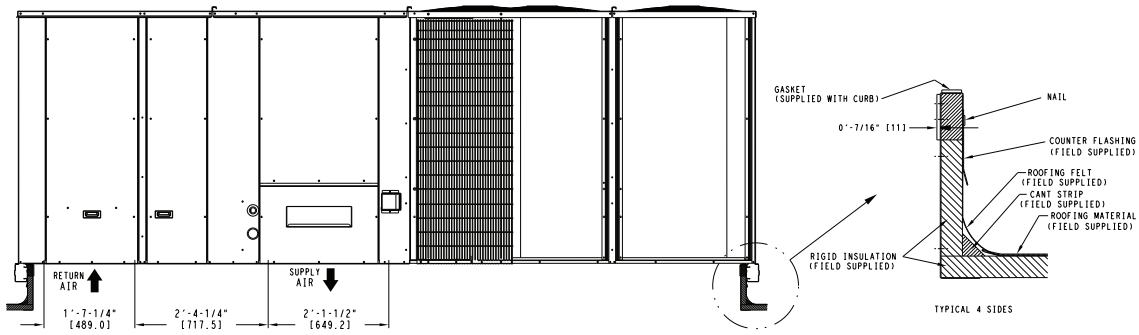
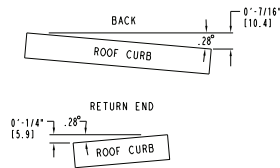


Fig. 9 — 50TC**30 Roof Curb Details