

# BI-POLAR<sup>®</sup>

2400

## Filterless Cold Plasma Air Purifier

### *Owner's Manual*



For use with models: BP2400-24, BP2400-110, BP2400-220



For safety and to ensure proper use carefully read the contents of this manual before operating or installing the unit.

# Thank You for Choosing The Bi-Polar® 2400

---

Congratulations, you own the MOST Versatile HVAC Air Purifier available! Before operating the Bi-Polar® 2400 please read this manual in its entirety. Doing so will give you important information to keep you safe from harm and ensure you get the most benefits from your air purifier. For additional information please contact us:

Mail: Air Oasis, LLC  
Attn: Customer Service  
3401 Airway Blvd  
Amarillo, TX 79118

web: [www.airoasis.com](http://www.airoasis.com)  
e-mail: [feedback@airoasis.com](mailto:feedback@airoasis.com)  
phone: 1-800-936-1764

## Table of Contents

---

Important Safety Instructions .....	1
Maintenance & Installation .....	2
Mounting & Installation Instructions .....	3 - 8
Limited Warranty .....	9
Troubleshooting Guide & Product Specs.....	back cover



# Important Safety Instructions


---


When operating any electrical appliance, basic precautions should always be followed for safety.

 **RISK OF FIRE, ELECTRIC SHOCK, OR INJURY**

- Carefully read the entire contents of this manual.
- Do not use outdoors.
- Do not use the unit in areas of extreme heat or in the presence of flammable gas.
- Do not attempt to service or repair the unit yourself. Any attempt to repair the unit yourself could cause serious injury and will void the warranty.
- Do not handle the wires or appliance with wet hands.
- Do not use damaged or uninsulated wires. If appliance is not working properly call a customer service representative at 1-800-936-1764.

**WARNING: RISK OF ELECTRICAL SHOCK. CAN CAUSE INJURY OR DEATH. DISCONNECT UNIT FROM POWER SUPPLY BEFORE SERVICING.**

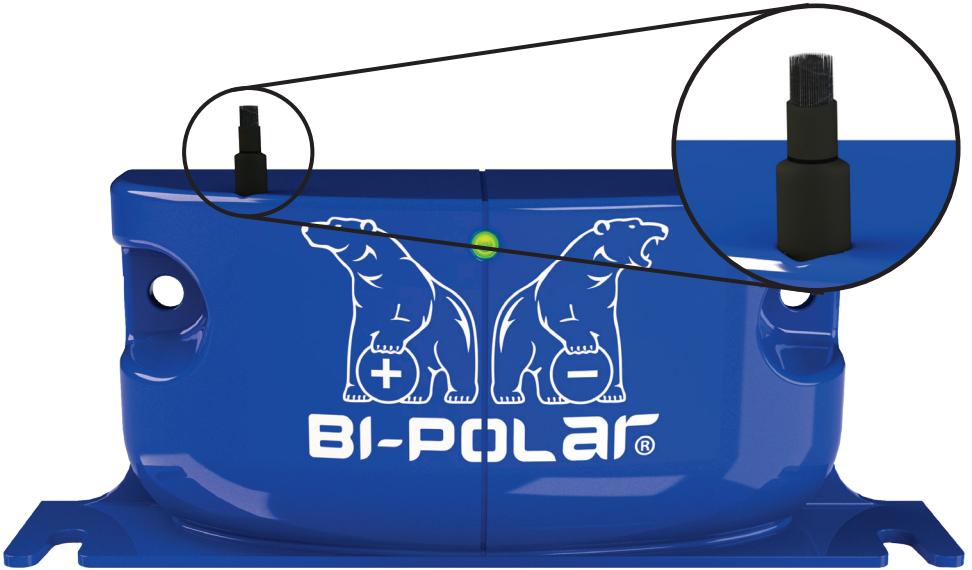
 Store and transport  $-4^{\circ}\text{ F} \sim 180^{\circ}\text{ F}$ , humidity 10% ~ 90% (Non Condensing).

 Do not operate unit in ambient temperatures above  $150^{\circ}\text{ F}$ .

 **KEEP OUT OF REACH OF CHILDREN**

## Maintenance & Installation

The Bi-Polar® 2400 was engineered to have low maintenance. The brush heads on your unit should be cleaned periodically for optimal effectiveness.



The Bi-Polar® 2400 can be installed using included screws, zip ties, or clear adhesive strips as shown below.



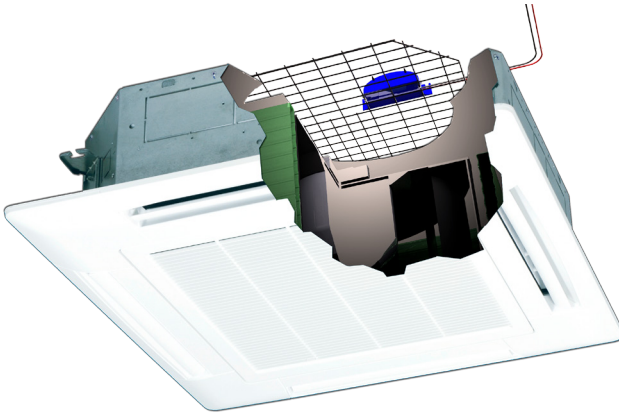
# Optimal Mounting Locations

---

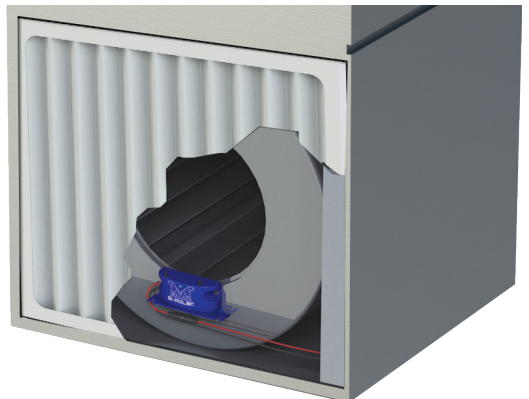
Ptac  
Installation



Ceiling Mount  
Installation



Furnace  
Installation




# Installation Instructions

## Preparing to Install Your New Bi-Polar® 2400 unit

The Bi-Polar® was designed to be simple and effective. Remove the unit & mounting hardware (two self tapping screws) from the box. We recommend keeping the box and all packaging material for shipping the unit, should it ever need to be returned for repairs. Locate the ideal location within the air stream. We recommend after a prefilter but before the cooling coil. Alternately, it can be mounted in the supply air.

### Caution

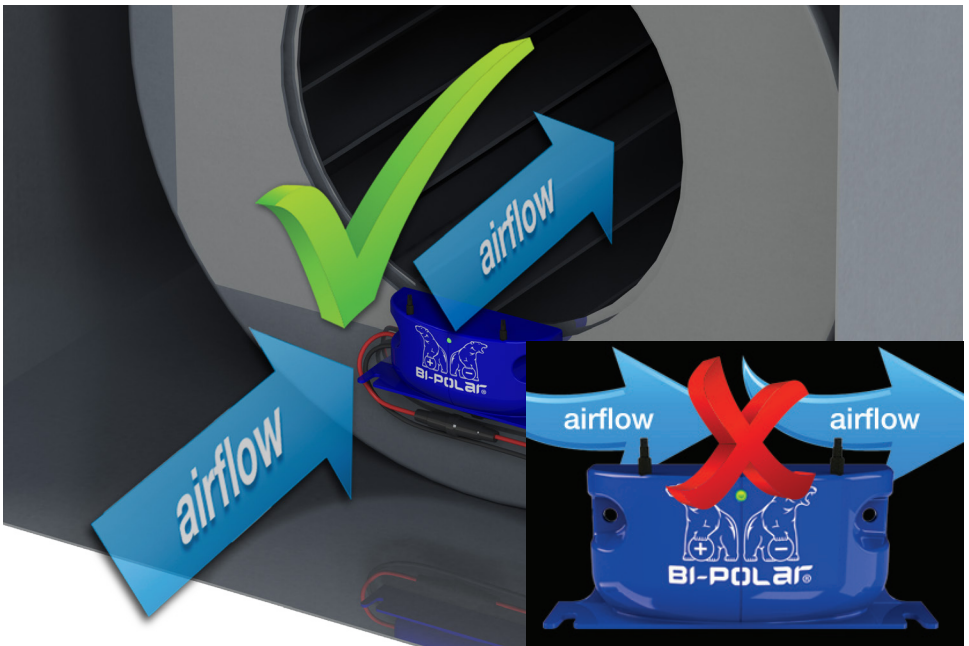
 Installation and servicing of air-conditioning equipment can be hazardous due to system pressure and electrical components. Only trained and qualified service personnel should install, repair, or service air-conditioning equipment. Air Oasis and its affiliates are not responsible for any damage to the Bi-Polar® unit, or injury to yourself or others, if you elect to install the device without utilizing qualified technicians.

Use the suggestions on page 3 to determine the optimal mounting location(s).

To complete the installation process you will need the following tools:

- 1/4 inch hex head screw driver

**Should be installed with brushes a minimum of 2 to 3 inches away from any metal objects or high voltage wires. Install the Bi-Polar® where the air can easily flow through the brushes. (Please see image below)**



# Installation Instructions

---

## Wiring Instructions

1. The Bi-Polar 2400 is internally fused; external or in-line fuses are not required. Check with your local electric codes and follow all guidelines.
2. Review the model number found on the Bi-Polar 2400 product and wire it only to the voltage range shown below. Disconnect power to the air handler the Bi-Polar 2400 will be mounted to during installation.
3. If connecting to a 24VAC power source with a grounded transformer leg, connect the grounded leg to the black wire.
4. Unit can be powered 24/7 or it may be interlocked to cycle with blower.
5. Green light will illuminate when powered and operating correctly.

Black wire: Neutral or Ground

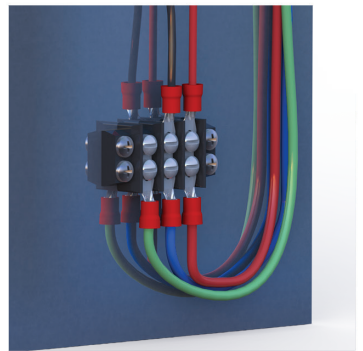
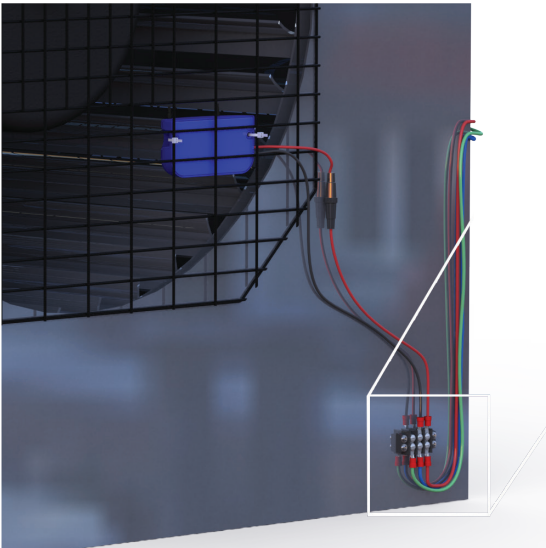
Red wire: Positive Input

3 Models:

BP2400-24 Usage 24 VAC / 400mA

BP2400-110 Usage 110-120 VAC / 80mA

BP2400-220 Usage 208-277 VAC / 40mA



# Installation Instructions

---

## Furnace Installation

Step 1 - Confirm power is disconnected from AHU and remove face panel, exposing fan compartment.

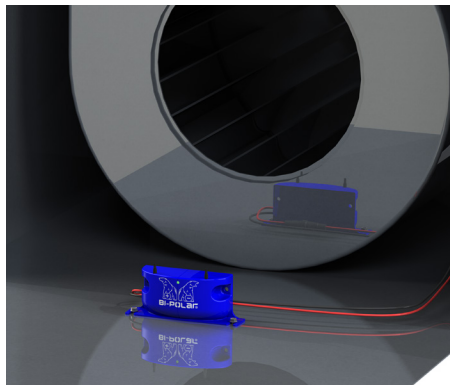
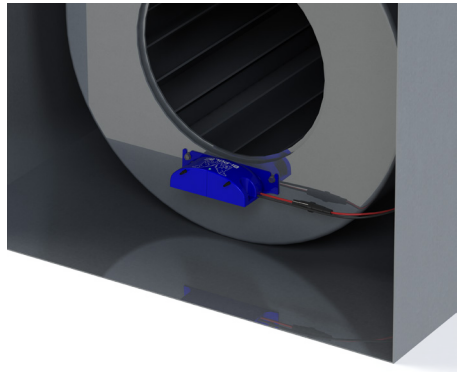
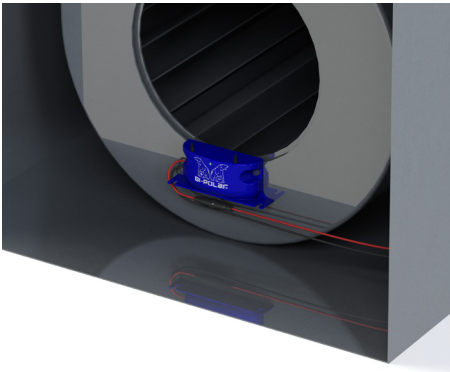
Step 2 - Locate power distribution block where main power is or will be connected to unit.

Step 3 - Using the included self-tapping screws, attach the Bi-Polar 2400 as shown in the illustration below.

Step 4 - Wire the Bi-Polar 2400 to the power distribution block. The wires are not polarity sensitive and may be shortened as required. Make sure to use the proper Bi-Polar model based on the primary voltage.

Step 5 - Enjoy the many benefits of the Bi-Polar 2400!

## Multiple Mounting Options (Please see examples below)





# Installation Instructions

---

## Ptac Installation

Step 1 - Disconnect power to air conditioner, remove service access panels and locate fan compartment. Using either the included self-tapping screws, zip ties, or clear adhesive strips, mount the Bi-Polar 2400 within the airstream as illustrated below.

Step 2 - Wire the Bi-Polar's black and red wires to the proper voltage terminals on the power distribution block as illustrated on page 3. The wires are not polarity sensitive and may be shortened as required. Make sure to use the proper Bi-Polar model based on the primary voltage.

Step 3 - Enjoy the many benefits of the Bi-Polar 2400!



# Installation Instructions

---

## Ceiling Mount

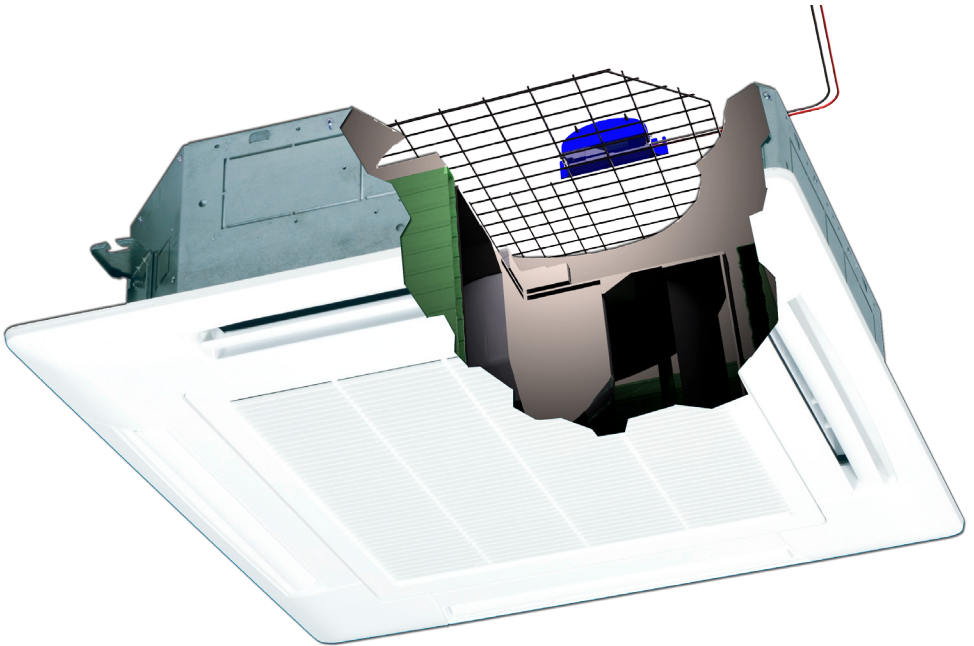
Step 1 - Confirm power is disconnected from the air conditioner and remove face panel, exposing fan compartment.

Step 2 - Locate power distribution block where main power is or will be connected to unit.

Step 3 - Lift up a portion of the protective wire screen and zip tie the Bi-Polar to the fan side of the screen.

Step 4 - Wire Bi-Polar to the power distribution block as illustrated on page 3. The wires are not polarity sensitive and may be shortened as required. Make sure to use the proper Bi-Polar model based on the primary voltage.

Step 5 - Enjoy the many benefits of the Bi-Polar 2400!



## Bi-Polar® 2400 Limited Warranty

---

Air Oasis gives you the following limited warranty for this product only if it was originally purchased directly from Air Oasis or an Air Oasis authorized dealer.

Air Oasis will repair or replace, free of charge to the original purchaser, any part that is found to be defective in material or workmanship within three (3) years of the date of purchase.

This limited warranty does not apply to any part subjected to accident, abuse, alteration, misuse, lack of reasonable care, the affixing of any attachment not provided with the product, loss of parts, damage caused by acts of God, the use of voltages other than indicated on the label displayed on this product or service of this product by anyone other than Air Oasis or an Air Oasis authorized dealer.

Air Oasis does not authorize any person or dealer to assume or grant any other warranty obligation with the sale of this product.

To obtain service, the customer must first register this unit by returning the enclosed Warranty Card. If you purchase this product from any source other than Air Oasis or an Air Oasis dealer, your purchase is "AS IS", which means Air Oasis grants you no warranty, and that you, not Air Oasis, assume the entire risk of the quality and performance of this product, including the entire cost of any necessary servicing or repairs of any defects.

Air Oasis' liability for damages to you for any costs whatsoever arising out of this statement of limited warranty shall be limited to the amount paid for this product at the time of original purchase, and Air Oasis shall not be liable for any direct, indirect, consequential or incidental damages arising out of the use or inability to use this product.

ALL EXPRESS AND IMPLIED WARRANTIES FOR THIS PRODUCT, INCLUDING IMPLIED WARRANTIES OF MERCHANTABILITY AND FITNESS FOR A PARTICULAR PURPOSE, ARE LIMITED IN DURATION TO THE WARRANTY PERIOD, AND NO WARRANTIES, WHETHER EXPRESS OR IMPLIED, WILL APPLY AFTER THIS PERIOD.

Some states do not allow limitations on the duration of implied warranties, so the above limitation may not apply to you. This warranty gives you specific legal rights, and you may also have other rights which vary from state to state.

To obtain service and RMA number, contact an Air Oasis representative at:  
1-800-936-1764

**NOTE: An RMA# is required for any warranty service work. All returned packages that do not have an RMA# will be refused.**

# Troubleshooting Guide

Problem/Question	Solution/Answer
What if my Bi-Polar 2400 won't turn on? The indicator light is not illuminated.	Check to make sure the Bi-Polar is properly installed with the black and red wires securely connected to the power source.
How do I know my Bi-Polar 2400 is working?	First check to see that the green indicator light is illuminated. A voltage detector can be placed between the brushes. If a voltage is detected then the unit is working properly.
How do I clean debris off the brush heads?	Using any non abrasive object, lightly brush the heads to remove debris.
If the above does not repair the symptom please contact an Air Oasis Customer Service Representative:	
Phone: 1-800-936-1764 E-mail: <a href="mailto:feedback@airoasis.com">feedback@airoasis.com</a> Web: <a href="http://www.airoasis.com">www.airoasis.com</a>	
Mail: Air Oasis Customer Service 3401 Airway Blvd. Amarillo, TX 79118	

## Bi-Polar 2400 Specifications

Operational	BP2400-24 Coverage BP2400-110 Coverage BP2400-220 Coverage Ozone Warranty	Up to 2400 CFM Up to 2400 CFM Up to 2400 CFM 0 ppm Three (3) year limited warranty
Replacements	The Bi-Polar 2400 requires	no replacement parts.
Electrical	BP2400-24 Usage BP2400-110 Usage BP2400-220 Usage	24 VAC / 400mA 110-120 VAC / 80mA 208-277 VAC / 40mA
Mechanical	BP2400-24 Dimensions Weight of Unit Shipping Weight  BP2400-110 Dimensions Weight of Unit Shipping Weight  BP2400-220 Dimensions Weight of Unit Shipping Weight	5" W x 2" H x 1.3" D 0.25 lbs 2 lbs  5" W x 2" H x 1.3" D 0.25 lbs 2 lbs  5" W x 2" H x 1.3" D 0.25 lbs 2 lbs

