

**SAMSUNG**

The busier your workgroup,  
the more you'll appreciate them.

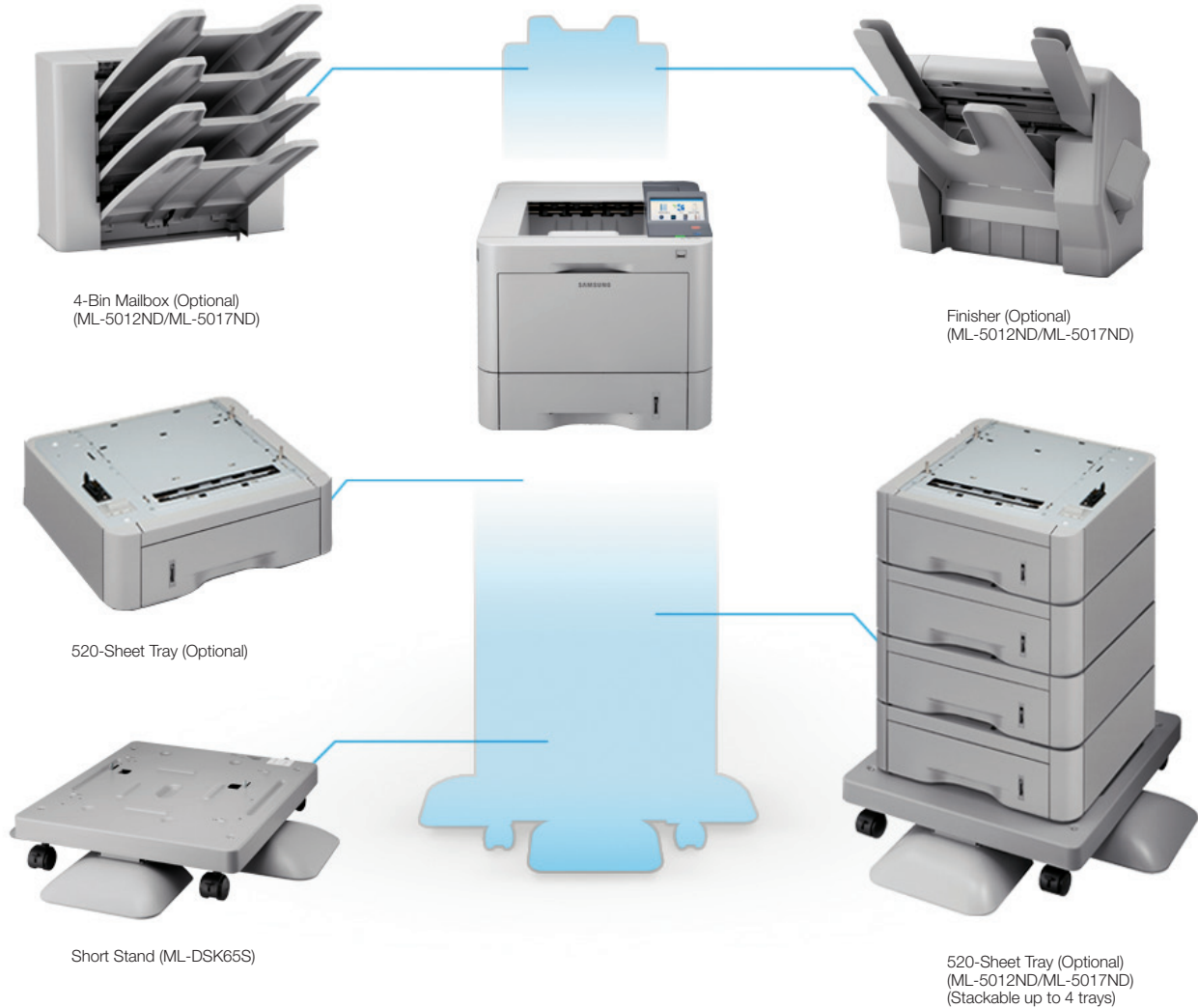


ML-4512ND/ML-5012ND/ML-5017ND  
Mono Laser Printers



# Flexible Configuration

Don't let their compact size fool you. The Samsung ML-4512ND/ML-5012ND/ML-5017ND mono laser printers give you the options you need for maximum productivity, now and in the future.



## Product Configuration

### Basic Configuration

Main Unit + Stand

Capacity: Up to 620 Sheets



### Advanced Configuration:

Main Unit + 520-Sheet Tray

Capacity: Up to 1,140 Sheets



### Full-Featured Configuration: (ML-5012ND/ML-5017ND only)

Main Unit + Stand + Four 520-Sheet Trays +  
4-bin Mailbox or 2-bin Finisher + Stand

Capacity: Up to 2,700 Sheets



(2-bin finisher shown)

# Performance with Power

Some days it seems as if everything's a rush job. On those days, and all other days as well, you'll appreciate all the power the Samsung ML-4512ND/ML-5012ND/ML-5017ND mono laser printers provide. Speeds of up to 50 ppm, 600-MHz dual core processors and duty cycles of up to 200,000 pages per month make them more capable of handling your most challenging jobs.

## Absolute Power

With 600 MHz dual core processing, you'll have no problem printing your largest jobs, even with complex graphics. And the 1GB LAN support and memory expandable to 768MB (ML-5012ND/ML-5017ND) enables jobs to be spooled and processed quickly.



## Print Professionally

Samsung makes sure you always look your best. With a resolution of up to 1200 x 1200 dpi, your documents will always look sharp, crisp and professional.



## Compact Power

Dimensions of just 16.46" (W) x 17.13" (D) x 14.09" (H) mean these printers are just the right size for your workgroup, no matter what size your workgroup is.



## Print Quickly

With speeds up to 50 ppm (up to 45 ppm with ML-4512ND), you'll spend less time waiting and more time working.



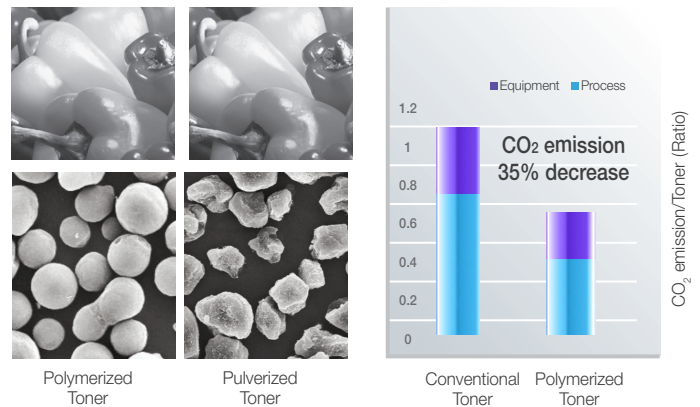
## Strong Reliability, Month After Month

Samsung printers are noted for their reliability and durability. With a duty cycle of up to 200,000 pages, these are no exceptions.

## Samsung Advanced Toner

Samsung's innovative advanced toner not only produces sharper images, it's better for the environment.

This technology employs smaller, more uniform particles, resulting in crisper lines and more subtly blended tones. You get improved resolution, a glossier finish and more professional-looking documents.



Samsung's polymerized toner process involves a wax layer and fine fusing, which protects printouts against folds and smudges, while reducing paper curl and jams. That means less waste and less downtime. This highly efficient process also results in lower power consumption.

Samsung advanced toner is even manufactured in a more energy efficient way, for an overall CO<sub>2</sub> reduction of 35%.

# Productivity Through Technology

Sheer speed and power are essential to busy workgroups, but so are advanced features tailored to the way you work. Samsung printers feature smart, intuitive technologies that save you time.

## Flexible Paper Handling, Expandable Capacity

Print any size from 3" x 5" up to 8.5" x 14", on a variety of media including envelopes and heavy card stock. Standard input capacity is 620 sheets (520-sheet cassette, 100-sheet multipurpose tray), with the ability to add additional 520-sheet optional cassettes. Capacity can be increased up to 1,140 sheets on the ML-4512ND or up to 2,700 sheets on the ML-5012ND and ML-5017ND. An optional finisher with stapling features gives you the ability to output professional jobs.

## Duplex Printing

With standard duplex printing built into every model, you use both sides of the sheet, saving you time, paper and money, for a better overall value.



## Easy Control Panels

The standard 4-line LCD control leads you through the menu intuitively, even if you're the new person in the office. And the 4.3" color touch-screen on the ML-5017ND makes it even easier to navigate quickly through the functions.



## Software that Simplifies

The Samsung ML-4512ND/ML-5012ND/ML-5017ND series printers offer a host of software applications that will help make your workday easier.



**Easy Print Manager** Enables you to locate and manage all your Samsung device and print settings from one simple location, right down to ordering your supplies.



**Barcode Printing** Embedded barcode fonts improve efficiency of automatic data collection processes, lowering associated costs.



**Samsung Universal Print Driver** Facilitates quick and easy networking by enabling you to print to any Samsung device without having to install a driver for every networked printer. You can dynamically search for compatible devices on the network and check their status, enable users to only use available printers, and dramatically reduce calls to the IT help desk.



**Samsung AnyWeb Print** A handy tool that enables you to collect and print the information you need from the web, reducing not only space, but also time and energy, too.



**Secure Print Release Encryption and Overwrite (with HPO Option)** Protect your data by using PIN and password authentication, which prevents unauthorized users from accessing data. Also easily approve authorization and provide job accounting.



**Samsung SyncThru Web Service** Uses a web interface to remotely manage your printer device, enabling you to check status information, customize settings and receive email alerts, all from the comfort of your desk.



**SyncThru Admin 5** Provides proactive monitoring and remote management of your printer fleet through an easy-to-use dashboard. It enables you to remotely configure and update devices, keep track of supplies and create powerful analyses and reports.



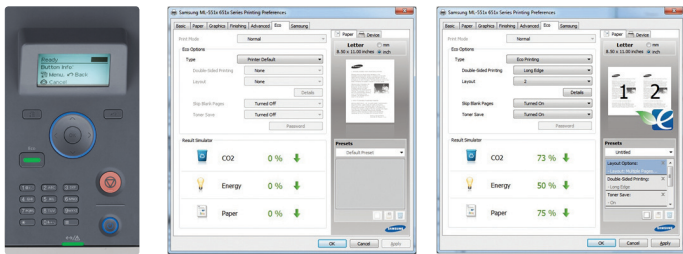
**Samsung CounThru™** This managed print service enables you to remotely monitor activity, as well as calculate and manage the costs of your entire printer network.

# Printing for the Planet

Innovations that help save our planet also help save you money. It's no surprise, then, that Samsung printers have been recognized not only for their eco-friendliness, but also for their low total cost of ownership (TCO).

## Eco Button

The Eco button is located prominently, to encourage use. The customizable button can be set to provide options such as 2-up and 4-up printing, which saves toner, paper and money. And with Samsung's unique Result Simulator, you can see exactly how much CO<sub>2</sub>, electricity and paper you've saved with the setting you've selected. It's an easy way to see just how much of a positive impact your Samsung printer is having on both you and your environment.



## Separate Toner and Drum for Lower TCO

By designing a separate toner and drum, we've lowered your total cost of ownership even further, since you can now only replace the drum when needed, rather than with every new toner cartridge. Less waste is better for the environment, too.



## Power Save Button

When you're finished using the ML-4512ND, ML-5012ND or ML-5017ND, simply press the Power Save button for one second, and your Samsung printer goes into an energy-saving state.



## Extra-High Yield Toner

Get more out of each print cartridge, and reduce recycling costs and landfill usage. Standard cartridges yield up to 7,000 pages, high-yield cartridges deliver up to 15,000 pages, and extra high-yield toner cartridges give you up to 20,000 pages.



## Eco-Friendly Initiatives

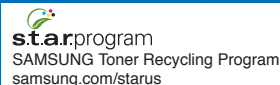
Every Samsung printer and MFP is Energy Star compliant. There's 17% post-consumer waste in every Samsung printer. And 55% of each Samsung printer is recyclable.

## Toner Recycling

Our Samsung-sponsored toner recycling program, S.T.A.R. (Samsung Takeback and Recycling), is an easy way to encourage recycling and keep toner cartridges out of landfills.

Specifications	ML-4512ND	ML-5012ND	ML-5017ND
<b>Print</b>			
Speed (Simplex)	Up to 45 ppm in Letter	Up to 50 ppm in Letter	Up to 50 ppm in Letter
Resolution	Optical: 600 x 600 / Enhanced: Up to 1200 x 1200 dpi effective output	Optical: 600 x 600 / Enhanced: Up to 1200 x 1200 dpi effective output	Optical: 600 x 600 / Enhanced: Up to 1200 x 1200 dpi effective output
First Print Out Time (Simplex)	As fast as 7 seconds	As fast as 7 seconds	As fast as 7 seconds
Emulation	PCL5e, PCL6, IBM ProPrinter, EPSON, PostScript3, PDF Direct v1.7, XPS v1.0	PCL5e, PCL6, IBM ProPrinter, EPSON, PostScript3, PDF Direct v1.7, XPS v1.0	PCL5e, PCL6, IBM ProPrinter, EPSON, PostScript3, PDF Direct v1.7, XPS v1.0
Duplex	Built-in	Built-in	Built-in
<b>Paper Handling</b>			
Standard Capacity	520-sheet Cassette Tray, 100-sheet Multi Purpose Tray	520-sheet Cassette Tray, 100-sheet Multi Purpose Tray	520-sheet Cassette Tray, 100-sheet Multi Purpose Tray
Max. Capacity	1,140 sheets	2,700 sheets	2,700 sheets
Media Size	(3" x 5") ~ (8.5" x 14") A4, Letter, Legal, Oficio, Folio, JIS B5, ISO B5, Executive, A5, Statement, A6, Index Card Stock, Postcard, Envelope Monarch, Envelope No-10, Envelope DL, Envelope C5, Envelope C6, Envelope No 9, Custom (3" x 5") ~ (8.5" x 14")	(3" x 5") ~ (8.5" x 14") A4, Letter, Legal, Oficio, Folio, JIS B5, ISO B5, Executive, A5, Statement, A6, Index Card Stock, Postcard, Envelope Monarch, Envelope No-10, Envelope DL, Envelope C5, Envelope C6, Envelope No 9, Custom (3" x 5") ~ (8.5" x 14")	(3" x 5") ~ (8.5" x 14") A4, Letter, Legal, Oficio, Folio, JIS B5, ISO B5, Executive, A5, Statement, A6, Index Card Stock, Postcard, Envelope Monarch, Envelope No-10, Envelope DL, Envelope C5, Envelope C6, Envelope No 9, Custom (3" x 5") ~ (8.5" x 14")
Media Type	Plain Paper, Thin Paper, Thick Paper, Cardstock, Thicker Paper, Hole Punched, Transparency, Pre-Printed, Letterhead, Recycled, Archive, Bond, Label, Envelope, Cotton, Colored	Plain Paper, Thin Paper, Thick Paper, Cardstock, Thicker Paper, Hole Punched, Transparency, Pre-Printed, Letterhead, Recycled, Archive, Bond, Label, Envelope, Cotton, Colored	Plain Paper, Thin Paper, Thick Paper, Cardstock, Thicker Paper, Hole Punched, Transparency, Pre-Printed, Letterhead, Recycled, Archive, Bond, Label, Envelope, Cotton, Colored
<b>General</b>			
Processor	Samsung Dual Core 600 MHz	Samsung Dual Core 600 MHz	Samsung Dual Core 600 MHz
Memory/Storage	128 MB (Max. 640 MB)	256 MB (Max. 768 MB)	256 MB (Max. 768 MB)
OS Compatibility	Windows 2000/XP (32/64 bit)/2003 Server (32/64 bit)/Vista (32/64 bit)/2008 Server (32/64 bit)/7/2008 Server R2 [Linux] - RedHat Enterprise Linux WS 4, 5 (32/64 bit) - Fedora 5, 6, 7, 8, 9, 10, 11, 12, 13 (32/64 bit) - SuSE Linux 10.1 (32 bit) - OpenSuSE 10.2, 10.3, 11.0, 11.1, 11.2 (32/64 bit) - Mandriva 2007, 2008, 2009, 2009.1, 2010 (32/64 bit) - Ubuntu 6.06, 6.10, 7.04, 7.10, 8.04, 8.10, 9.04, 9.10, 10.04 (32/64 bit) - SuSE Linux Enterprise Desktop 10, 11 (32/64 bit) - Debian 4.0, 5.0 (32/64 bit) Mac OS X 10.3-10.6, [UNIX] Sun Solaris 9,10 (x86, SPARC), HP-UX 11.0, 11i v1, 11i v2, 11i v3 (PA-RISC, Itanium), IBM AIX 5.1, 5.2, 5.3, 5.4 SAP AS400 CTRIX WHQL	Windows 2000/XP (32/64 bit)/2003 Server (32/64 bit)/Vista (32/64 bit)/2008 Server (32/64 bit)/7/2008 Server R2 [Linux] - RedHat Enterprise Linux WS 4, 5 (32/64 bit) - Fedora 5, 6, 7, 8, 9, 10, 11, 12, 13 (32/64 bit) - SuSE Linux 10.1 (32 bit) - OpenSuSE 10.2, 10.3, 11.0, 11.1, 11.2 (32/64 bit) - Mandriva 2007, 2008, 2009, 2009.1, 2010 (32/64 bit) - Ubuntu 6.06, 6.10, 7.04, 7.10, 8.04, 8.10, 9.04, 9.10, 10.04 (32/64 bit) - SuSE Linux Enterprise Desktop 10, 11 (32/64 bit) - Debian 4.0, 5.0 (32/64 bit) Mac OS X 10.3-10.6, [UNIX] Sun Solaris 9,10 (x86, SPARC), HP-UX 11.0, 11i v1, 11i v2, 11i v3 (PA-RISC, Itanium), IBM AIX 5.1, 5.2, 5.3, 5.4 SAP AS400 CTRIX WHQL	Windows 2000/XP (32/64 bit)/2003 Server (32/64 bit)/Vista (32/64 bit)/2008 Server (32/64 bit)/7/2008 Server R2 [Linux] - RedHat Enterprise Linux WS 4, 5 (32/64 bit) - Fedora 5, 6, 7, 8, 9, 10, 11, 12, 13 (32/64 bit) - SuSE Linux 10.1 (32 bit) - OpenSuSE 10.2, 10.3, 11.0, 11.1, 11.2 (32/64 bit) - Mandriva 2007, 2008, 2009, 2009.1, 2010 (32/64 bit) - Ubuntu 6.06, 6.10, 7.04, 7.10, 8.04, 8.10, 9.04, 9.10, 10.04 (32/64 bit) - SuSE Linux Enterprise Desktop 10, 11 (32/64 bit) - Debian 4.0, 5.0 (32/64 bit) Mac OS X 10.3-10.6, [UNIX] Sun Solaris 9,10 (x86, SPARC), HP-UX 11.0, 11i v1, 11i v2, 11i v3 (PA-RISC, Itanium), IBM AIX 5.1, 5.2, 5.3, 5.4 SAP AS400 CTRIX WHQL
Interface	High Speed USB 2.0, Device 1 Port/Host 1 Port, 10/100/1000 Base TX Ethernet	High Speed USB 2.0, Device 1 Port/Host 2 Port, 10/100/1000 Base TX Ethernet	High Speed USB 2.0, Device 1 Port/Host 2 Port, 10/100/1000 Base TX Ethernet
User Interface	16 x 4 Character LCD 3 x 4 Numeric Keypad Power, Cancel, ECO, Menu, Back, Buttons 4-Direction Navigational Pad	16 x 4 Character LCD 3 x 4 Numeric Keypad Power, Cancel, ECO, Menu, Back, Buttons 4-Direction Navigational Pad	4.3" Touch Screen Power, Cancel Buttons
Noise Level	Less than 54 dBA (Printing), Less than 30 dBA (Standby), Background Level (Sleep)	Less than 54 dBA (Printing), Less than 30dBA (Standby), Background Level (Sleep)	Less than 54 dBA (Printing), Less than 30 dBA (Standby), Background Level (Sleep)
Duty Cycle, Monthly	200,000 sheets	200,000 sheets	200,000 sheets
Dimension (W x D x H)	16.46" x 17.13" x 14.09"	16.46" x 17.13" x 14.09"	16.46" x 17.13" x 14.09"
Weight	55.87 lbs.	55.87 lbs.	55.87 lbs.
Power Consumption	Less than 12 W (Ready)/ Less than 850 W (AVG)/1400 W (Max/Peak)/ Less than 4.5 W (Power Save)	Less than 15 W (Ready)/Less than 900 W (AVG)/ 1400 W (Max/Peak)/ Less than 4.5 W (Power Save)	Less than 15 W (Ready)/Less than 900 W (AVG)/ 1400 W (Max/Peak)/ Less than 4.5 W (Power Save)
<b>Consumables</b>			
Toner Cartridge	Standard: Average cartridge yield 7K standard pages* (MLT-D307S) High Yield: Average cartridge yield 15K standard pages* (MLT-D307L) Extra High Yield: Cartridge yield 20K standard pages* (MLT-D307E) *Declared cartridge yield in accordance with ISO/IEC 19752.	Standard: Average cartridge yield 7K standard pages* (MLT-D307S) High Yield: Average cartridge yield 15K standard pages* (MLT-D307L) Extra High Yield: Cartridge yield 20K standard pages* (MLT-D307E) *Declared cartridge yield in accordance with ISO/IEC 19752.	Standard: Average cartridge yield 7K standard pages* (MLT-D307S) High Yield: Average cartridge yield 15K standard pages* (MLT-D307L) Extra High Yield: Cartridge yield 20K standard pages* (MLT-D307E) *Declared cartridge yield in accordance with ISO/IEC 19752.
Imaging Unit	Average 60K pages* (MLT-R307) (*Average cartridge yield. This may vary depending on average area coverage & print job size.)	Average 60K pages* (MLT-R307) (*Average cartridge yield. This may vary depending on average area coverage & print job size.)	Average 60K pages* (MLT-R307) (*Average cartridge yield. This may vary depending on average area coverage & print job size.)
Options	Memory: 512MB (ML-MEM170) Optional Paper Tray: 520 sheet Cassette Tray (ML-S5012A)	Memory: 512MB (ML-MEM170) Optional Paper Tray: 520 sheet Cassette Tray (ML-S5012A) Finisher (Stapler) (ML-OCT65) Multi-bin Mailbox (ML-MBT65) Hard Disk (ML-HDK470) Short Stand (ML-DSK65S)	Memory: 512MB (ML-MEM170) Optional Paper Tray: 520 sheet Cassette Tray (ML-S5012A) Finisher (Stapler) (ML-OCT65) Multi-bin Mailbox (ML-MBT65) Hard Disk (ML-HDK470) Short Stand (ML-DSK65S)
<b>Green Management</b>			
Green Management	Energy Star Compliant, S.T.A.R. Program (Samsung Toner Recycle Program)	Energy Star Compliant, S.T.A.R. Program (Samsung Toner Recycle Program)	Energy Star Compliant, S.T.A.R. Program (Samsung Toner Recycle Program)

samsung.com/printer • samsung.com/business  
Product Support: 1-866-SAM-4BIZ • 1-800-SAMSUNG



©2011 Samsung Electronics America, Inc. Samsung is a registered mark of Samsung Electronics Co., Ltd. Specifications and designs are subject to change without notice. Non-metric weights and measurements are approximate. All brand, product, service names and logos are trademarks and/or registered trademarks of their respective manufacturers and companies. Simulated screen images. See [samsung.com](http://samsung.com) for detailed information. Printed in USA on 50% recycled (30% post-consumer waste) paper using soy inks. PNT-ML4512ND5017ND-AUG11T

