



ASSEMBLY INSTRUCTIONS

UltraHD® LED Lighted Workcenter (Model No. 20247, 20246, 20157, 20291)

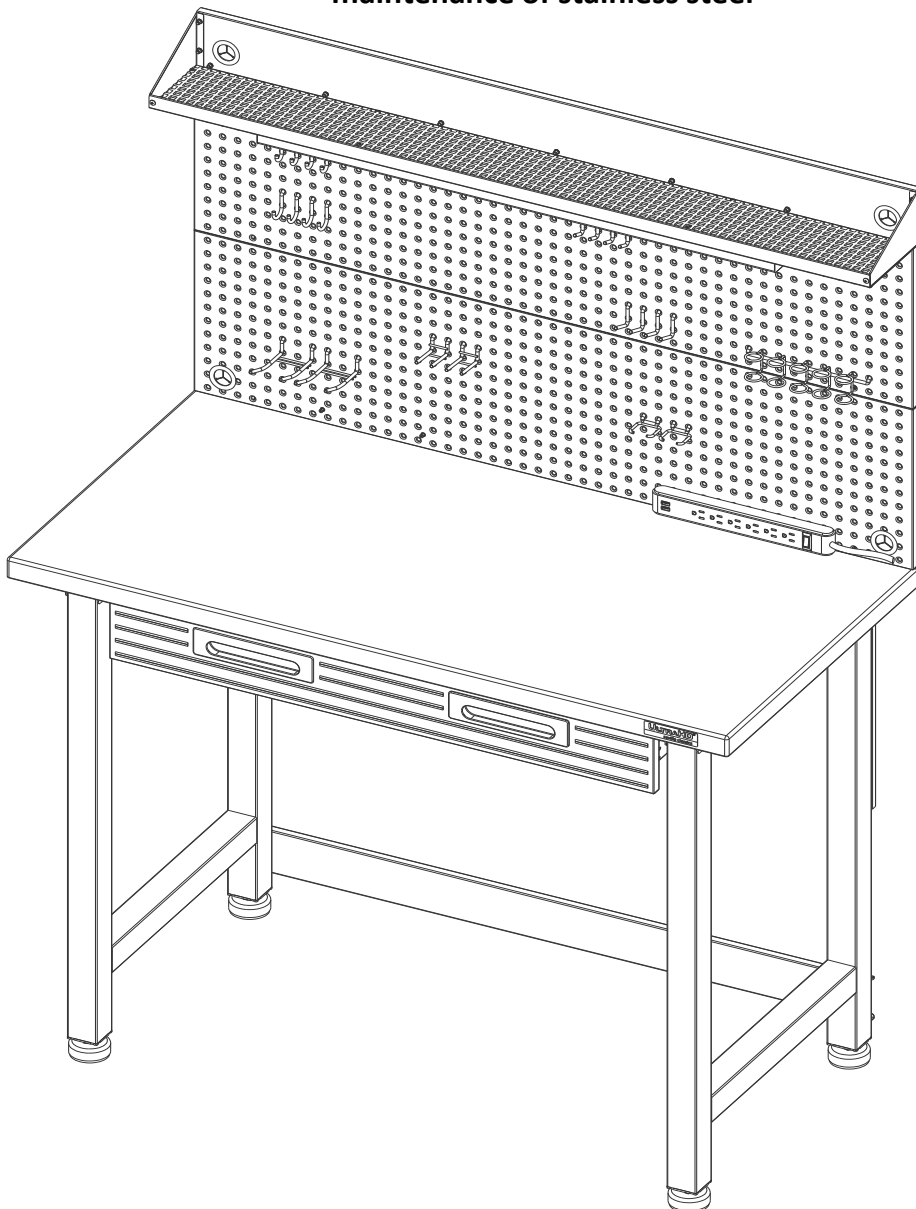
Granite Graphite Red White

48 in W X 24 in D X 65.5 in H

(1.21 m x 60.9 cm x 1.66 m)

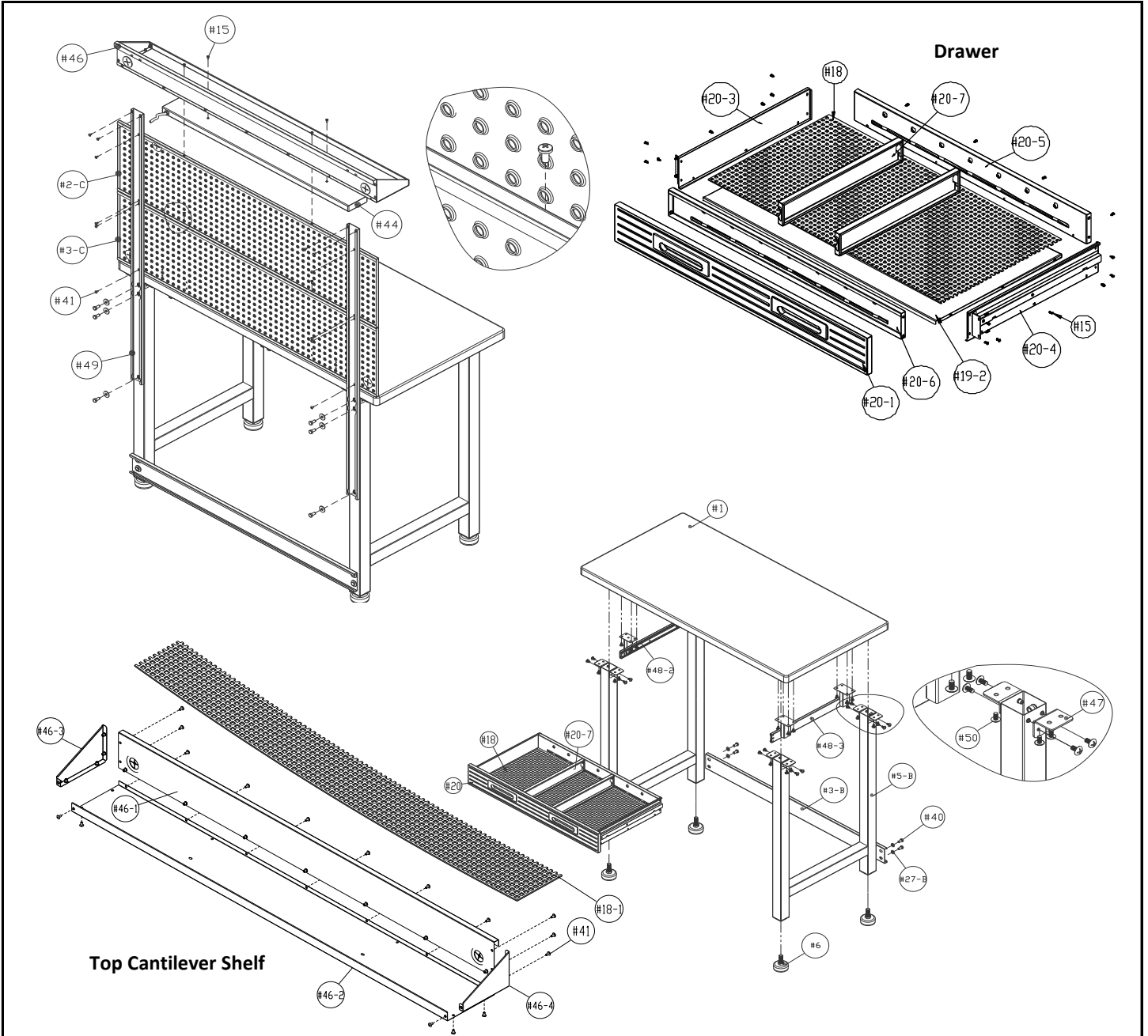
ULTRAGUARD®
FINGERPRINT RESISTANT SURFACES
AND INCREASED DURABILITY

Reference page 8 for special care and
maintenance of stainless steel



PARTS LIST

Please check the parts carefully according to the parts list. If you are missing any parts, please contact our customer service department (please refer to page 9.)

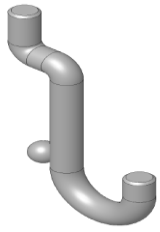


No.	Parts	Qty.
#1	SOLID HARDWOOD BOARD TOP	1PC
#2-C	TOP PEGBOARD PANEL	1PC
#3-B	BOTTOM CROSSBAR	1PC
#3-C	BOTTOM PEGBOARD PANEL	1PC
#5-B	LEG PIECE	2PCS
#6	LEVELING FOOT	4PCS
#18	DRAWER MAT	1PC
#18-1	TOP CANTILEVER SHELF MAT	1PC
#19-2	DRAWER BASE PANEL	1PC
#20-1	DRAWER FRONT PANEL	1PC
#20-3	DRAWER LEFT PANEL	1PC
#20-4	DRAWER RIGHT PANEL	1PC

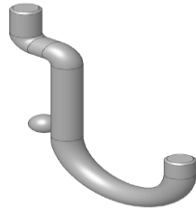
No.	Parts	Qty.
#20-5	DRAWER BACK PANEL	1PC
#20-6	DRAWER FRONT PANEL SUPPORT PLATE	1PC
#20-7	DRAWER DIVIDER	2PCS
#44	LED LAMP	1PC
#46-1	TOP CANTILEVER SHELF BACK PANEL	1PC
#46-2	TOP CANTILEVER SHELF BASE PANEL	1PC
#46-3	TOP CANTILEVER SHELF LEFT PANEL	1PC
#46-4	TOP CANTILEVER SHELF RIGHT PANEL	1PC
#47	"L" BRACKET	8PCS
#48-2	SMALL DRAWER LEFT SUPPORT	1PC
#48-3	SMALL DRAWER RIGHT SUPPORT	1PC
#49	PEGBOARD LONG SUPPORT BAR	2PCS

PARTS LIST

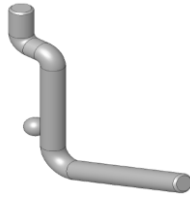
Please check the parts carefully according to the parts list. If you are missing any parts, please contact our customer service department (please refer to page 9.)



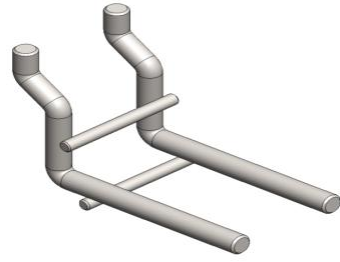
#100



#101



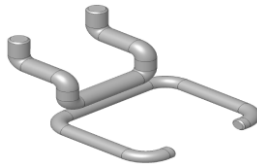
#103



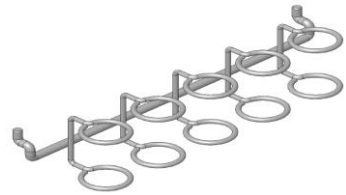
#104



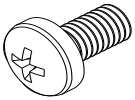
#105



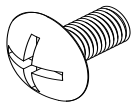
#106



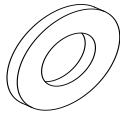
#107



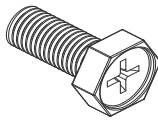
#15



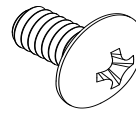
#50



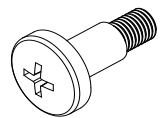
#27-B



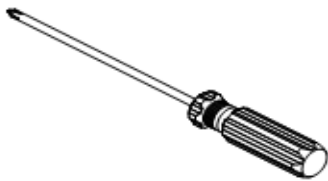
#40



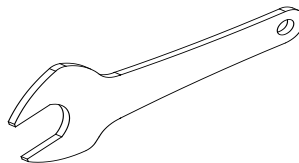
#41



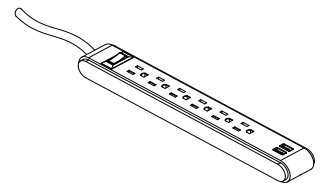
#51



#21



#25



#45

No.	Parts	Qty.	No.	Parts	Qty.
#15	SCREW B (M4 x 8L)	36PCS	#100	1/2" CURVED	4PCS
#21	SCREW DRIVER	1PC	#101	1" CURVED	4PCS
#25	WRENCH	1PC	#103	1.5" STRAIGHT	8PCS
#27-B	WASHER	10PCS	#104	2" DOUBLE PRONG	2PCS
#40	SCREW E (M8 x 18L)	10PCS	#105	4" CURVED DOUBLE PRONG	2PCS
#41	SCREW F (M4 x 8L)	29PCS	#106	2" PLIER HOLDER	2PCS
#45	POWER STRIP W. USB PORTS	1PC	#107	2" MULTI-TOOL HOLDER	1PCS
#50	SCREW I (M6 x 15L)	48PCS			
#51	STUD SCREW J	4PCS			

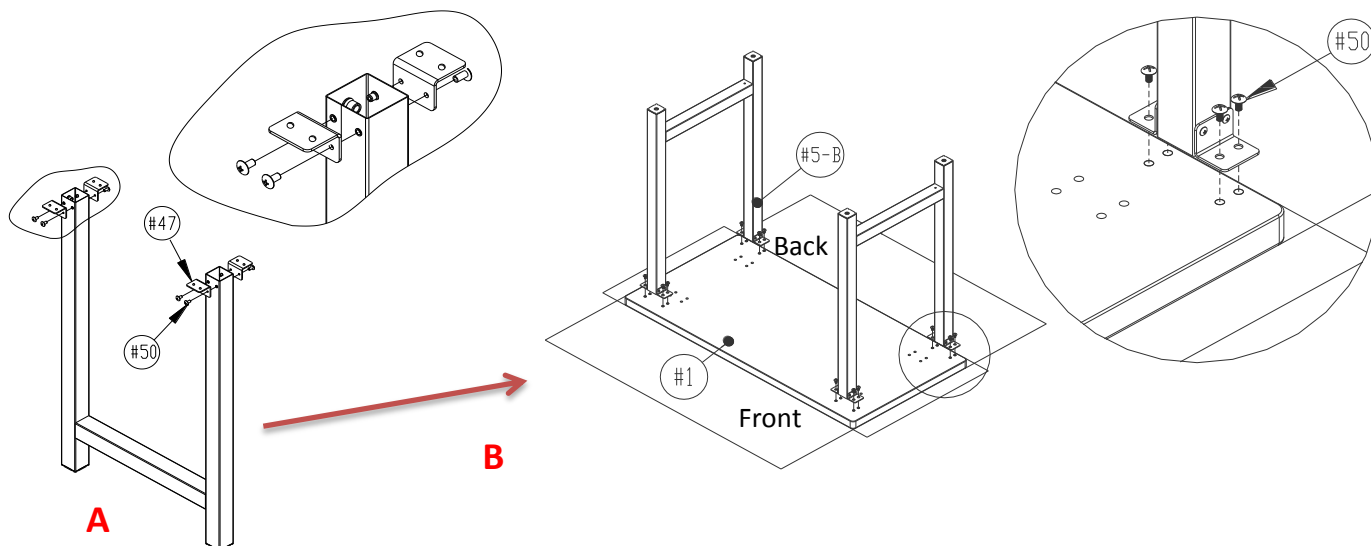
UltraHD® LED Lighted Workcenter (Model No. 20247, 20246, 20157, 20291)



*NOTE: We recommend TWO people to assemble the workbench.



TIP: A magnetic screwdriver is included for convenience. If using a power screwdriver, keep torque setting LOW.

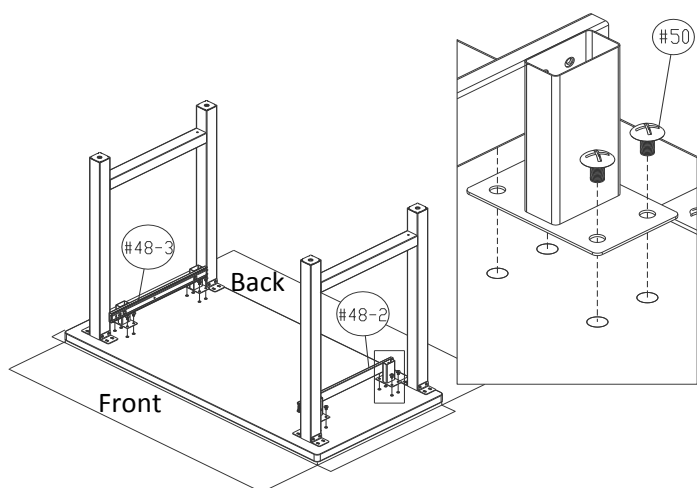


Step 1. Install (#5-B) Leg Piece.

A: Open the package and make sure there are no missing parts. Set the parts aside. Then, attach the (#47) "L" Bracket to the (#5-B) Leg Piece, use (#50) Screw I to tighten. Repeat Step A to install (#47) "L" Brackets to another one (#5-B) Leg Piece.

Note: Tighten the all the screws after the (#47) Brackets are flush with the (#5-B) Leg Piece.

B: Leave the Solid Hardwood Board Top (#1) on cardboard to reduce the chance of scratching during assembly. Attach the (#5-B) Leg Pieces to the back of the (#1) Solid Hardwood Board Top, line up the screw holes, use (#50) Screw I and (#21) Screwdriver to tighten.

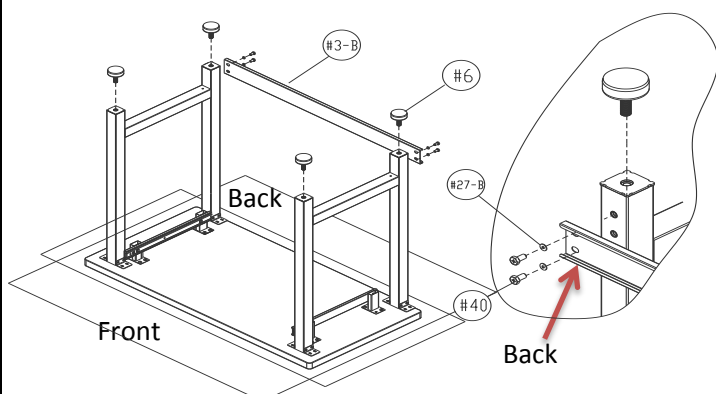


Step 2. Install (#48-2) Small Drawer Left Support, (#48-3) Small Drawer Right Support.

Attach the (#48-2) Small Drawer Left Support to the bottom of (#1) Solid Hardwood Board, line up the screw holes, use (#50) Screw I and (#21) Screwdriver to tighten.

Repeat this step to install (#48-3) Small Drawer Right Support.

NOTE: Do not fully tighten the screws. This will help you make any adjustments for alignment.



Step 3. Install (#3-B) Bottom Cross Bar and (#6) Leveling Feet.

Attach the (#3-B) Bottom Cross Bar to the back of (#5-B) Leg Piece, line up the screw holes, use (#40) Screw E with (#27-B) Washer and (#21) Screwdriver to tighten.

After installing (#5-B) Leg Pieces, attach (#6) Leveling Feet to (#5-B) Leg Pieces, use (#25) Wrench to tighten.

NOTE: Turn the workbench upright once you finish this step.

UltraHD® LED Lighted Workcenter (Model No. 20247, 20246, 20157, 20291)



*NOTE: We recommend TWO people to assemble the workbench.



Step 4. Install (#49) Pegboard Long Support Bar.

Attach (#49) Pegboard Long Support Bar to the back of the workbench, line up the screw holes, use (#40) Screw E with (#27-B) Washer to tighten.

NOTE: Do not fully tighten the screws. This will help you make any adjustments to alignment later.

Step 5. Install (#3-C) Bottom Pegboard Panel and (#2-C) Top Pegboard Panel.

Attach (#3-C) Bottom Pegboard Panel along the back top edge of workbench and against (#49) Pegboard Long Support Bar, line up the screw holes, use (#41) Screw F and (#21) Screwdriver to tighten. Use (#15) Screw B to fasten the (#2-C) & (#3-C) Top & Bottom Pegboard.

NOTE: Do not fully tighten the screws. This will help you make any adjustments to alignment later.

Attach (#2-C) Top Pegboard Panel to the top of (#3-C) Bottom Pegboard Panel and (#49) Pegboard Long Support Bar, line up the screw holes, use (#41) Screw F and (#21) Screwdriver to tighten.

Step 6. Install (#46) Top Cantilever Shelf.

A). Attach the (#46-3) Top Cantilever Shelf Left Panel and the (#46-4) Top Cantilever Shelf Right Panel to (#46-2) Top Cantilever Shelf Base Panel. Use (#41) F screws to tighten.

NOTE: Do not fully tighten the screws. This will help you make any adjustments for alignment later.

B). Make sure to slide the (#46-1) back panel underneath the edge of (#46-2) Top Cantilever Shelf Base Panel. Use (#41) F screws to tighten.

Step 7. Install Assembled (#46) Top Cantilever Shelf to workbench.

Attach assembled (#46) Top Cantilever Shelf to (#2-C) Top Pegboard Panel and (#49) Pegboard Long Support Bars, line up the screw holes, use (#41) Screw F to tighten. Use (#15) Screw B to fasten the (#2-C) Top Pegboard and (#46) Top cantilever Shelf.

NOTE: Do not fully tighten the screws. This will help you make any adjustments for alignment later.

UltraHD® LED Lighted Workcenter (Model No. 20247, 20246, 20157, 20291)



*NOTE: We recommend TWO people to assemble the workbench.



Step 8. Install (#20-3 & #20-4) Left & Right Drawer Side Panels and (#20-5) Drawer Back Panel.

Attach (#20-3 & #20-4) Left & Right Drawer Side Panels and (#20-5) Drawer Back Panel to the (#19-2) Drawer Base Panel. Line up the screw holes and use (#15) Screw B to tighten.

NOTE: Make sure the hook slots on the (#20-5) Drawer Back Panel are facing inward.

NOTE: Do not fully tighten the screws until next step.

Step 9. Install (#20-6) Drawer Front Panel Support Plate

Attach (#20-6) Drawer Front Panel Support Plate as the left arrow shows. Line up the screw holes and use (#15) Screw B to tighten.

NOTE: Make sure the hook slots on the (#20-6) Drawer Front Panel Support Plate are facing inward.

NOTE: Once all part are in position, tighten all screws.

Step 10. Install (#20-1) Drawer Front Panel

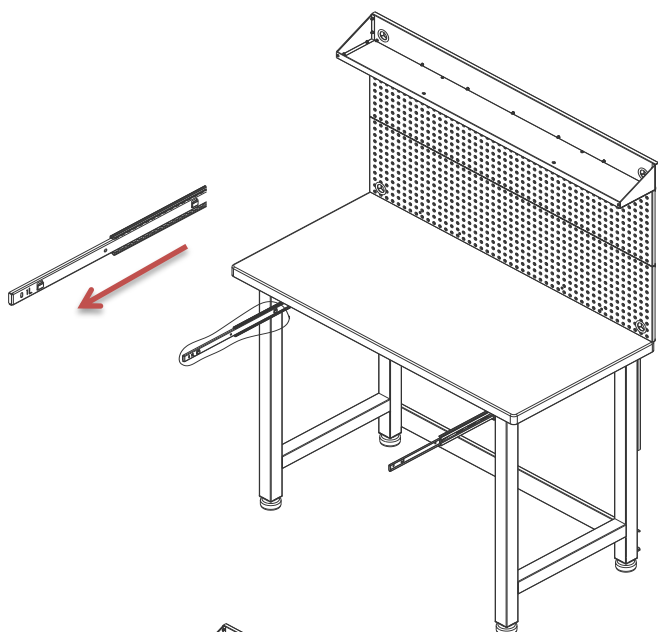
Attach the Drawer Case to the (#20-1) Drawer Front Panel. Line up the screw holes and use (#15) Screw B to tighten.

Note: Drawer's maximum loading capacity is 60 lbs to avoid the unit from tipping when drawer is fully extended.

UltraHD® LED Lighted Workcenter (Model No. 20247, 20246, 20157, 20291)



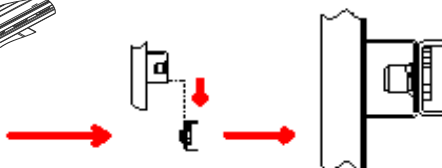
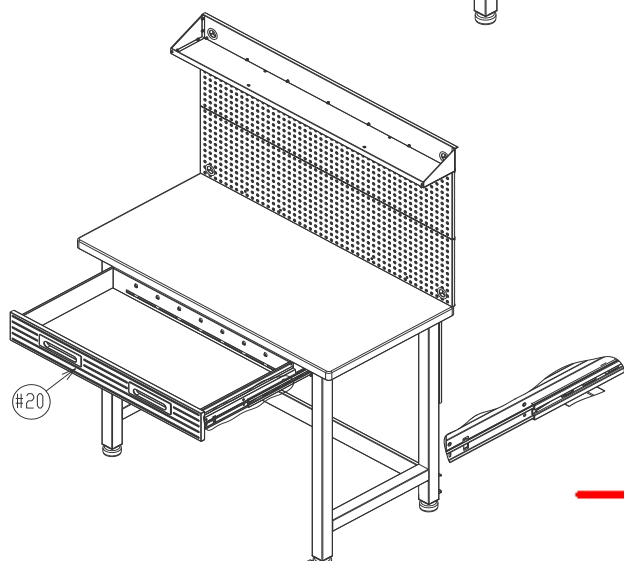
*NOTE: We recommend TWO people to assemble the workbench.



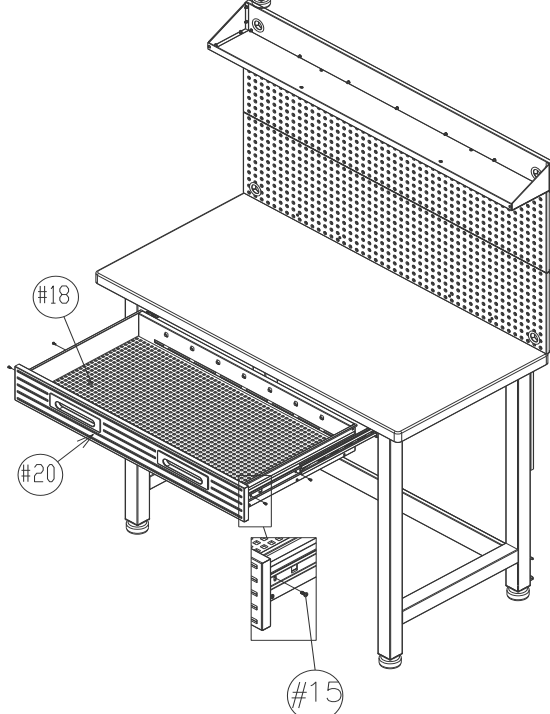
Step 11. Insert Drawer

Pull out the drawer sliders to full length, then attach and fit the Drawer to the inner track of the sliders and slide drawers in.

NOTE: Make sure to remove the rubber guards on the hooks of the inner track before fitting the drawer in.



NOTE: Once you insert the drawers, tighten (#15) Screw B for (#48-2) Small Drawer Left Support and (#48-3) Small Drawer Right Support.



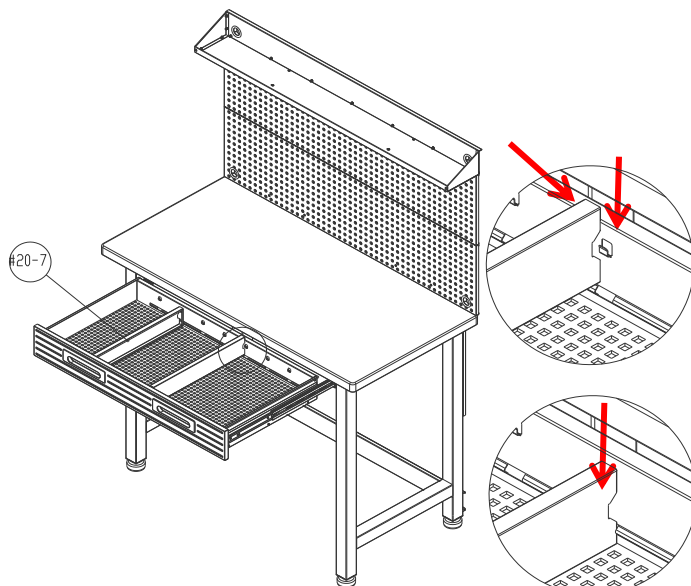
Step 12. Place (#18) Drawer Mat

After sliding in the Drawer, place (#18) Drawer Mats inside the drawer or you can place the (#18) Drawer Mat inside the drawer before you slide them in.

UltraHD® LED Lighted Workcenter (Model No. 20247, 20246, 20157, 20291)



*NOTE: We recommend TWO people to assemble the workbench.



Step 13. Install (#20-7) Drawer Divider

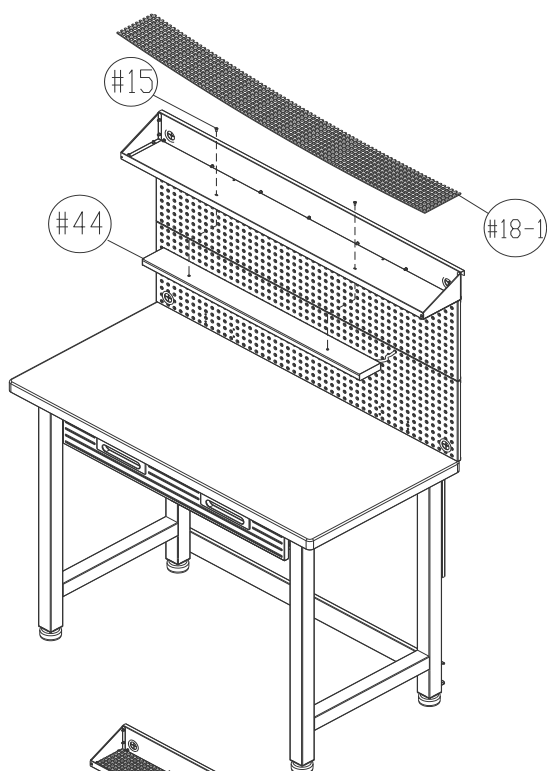
Insert Drawer Divider into the drawer. The solid wall of the divider should be facing the desired slot position. Slide the divider towards the slot, then push down into the slots.

Repeat the above steps to assemble another Drawer Divider.

NOTE: You can assemble this step before or after the drawer is assembled on the Workbench

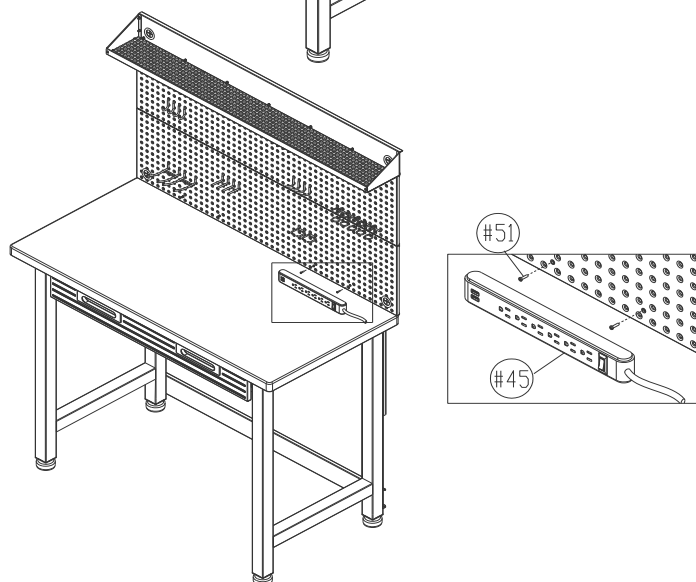
How to remove the Drawer Divider

Lift the Drawer Divider up and to the side to remove from the slot.



Step 14. Install (#44) LED Lamp.

Make sure the power cord goes through Rubber Grommet of (#2-C) Top Pegboard Panel. Attach (#44) LED Lamp under the assembled (#46) Top Cantilever Shelf. Line up the screw holes, use (#15) Screw B to tighten. Then place the (#18-1) Top Cantilever Mat in place.



Step 15. Place (#45) Power Strip.

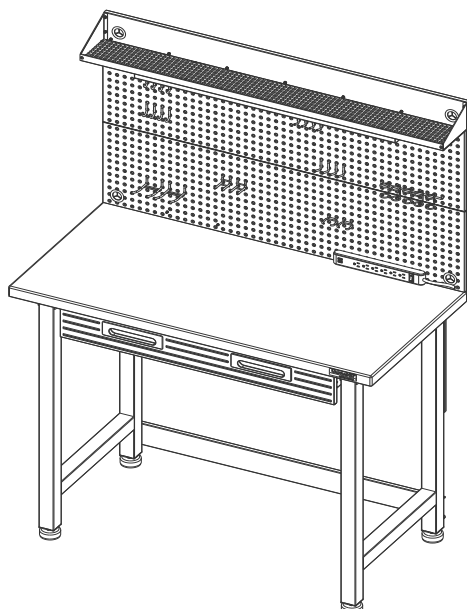
Insert and screw (#51) Stud Screw J to (#3-C) Bottom Pegboard Panel, then, hook (#45) Power Strip on and make sure the power cord goes through Rubber Grommet of (#3-C) Bottom Pegboard Panel.

NOTE: You can position (#45) Power Strip on the left or right side of the (#3-C) Bottom Pegboard Panel.

UltraHD® LED Lighted Workcenter (Model No. 20247, 20246, 20157, 20291)



*NOTE: We recommend TWO people to assemble the workbench.



Step 16. Place (#100), (#101), (#103), (#104), (#105), (#106), (#107) Hooks to Pegboard as you desire.

**Total Weight Capacity
Evenly Distributed**

500 lbs. (226.8kg)

**Weight Capacity per drawer
Evenly Distributed**

60 lbs. (27.22kg)



CAUTION
RISK OF ELECTRIC SHOCK



Do not plug into another relocatable power tap

[!] CAUTION: Potential Shock or Fire Hazard. This unit is not intended for use in wet or potentially wet locations, such as showers, saunas, under or near fishtanks, sinks, etc.

UltraHD® Stainless Steel Care Instructions

The stainless-steel parts of this product are protected with an UltraGuard® fingerprint resistant finish.

DO NOT use traditional stainless-steel cleaners. To safely manage unwanted fingerprints and prevent new stains, perform the following steps once monthly:

- Lightly wipe with warm water and clean microfiber cloth
- Always wipe in the direction of the surface grain (NEVER ACROSS)
- Wipe away excess water with dry clean cloth

UltraHD® Wood Top Care Instructions

Our tops are made with real wood, and while great care is taken to ensure consistent top color and graining, there may be natural variations between finished products. We hand select the wood for every top to ensure the material is undamaged and naturally beautiful. If the wood top is received with excessive damage or splitting, Seville Classics will guarantee replacement of the top. Variations of color, and minor scratches in the clear coat finish will not be reason for replacement.

Restore Shallow Scratches or Chips

The wood surface of this product is finished with a polyurethane coat. If the wood top becomes chipped or scratched, a polyurethane coat can be reapplied to restore a smooth texture and protect from future

- Please follow the manufacturer's instruction on the product for application.

UltraHD® LED Lighted Workcenter (Model No. 20247, 20246, 20157, 20291)



***NOTE: We recommend TWO people to assemble the workbench.**



ATTENTION: Changes or modifications not expressly approved by the party responsible for compliance could void the user's authority to operate this device;

NOTE: This equipment has been tested and found to comply with the limits for a Class B digital device, pursuant to part 15 of the FCC Rules. These limits are designed to provide reasonable protection against harmful interference in a residential installation. This equipment generates, uses, and can radiate radio frequency energy and, if not installed and used in accordance with the instructions, may cause harmful interference to radio communications. However, there is no guarantee that interference will not occur in a particular installation. If this equipment does cause harmful interference to radio or television reception, which can be determined by turning the equipment off and on, the user is encouraged to try to correct the interference by one or more of the following measures:

- Reorient or relocate the receiving antenna.
- Increase the separation between the equipment and receiver.
- Connect the equipment into an outlet on a circuit different from that to which the receiver is connected.
- Consult the dealer or an experienced radio/TV technician for help.

This device complies with Part 15 of the FCC Rules. Operation is subject to the following two conditions:

- (1) This device may not cause harmful interference, and
- (2) this device must accept any interference received, including interference that may cause undesired operation.

CONTACT INFORMATION

If you are missing any parts, have any questions, or need additional assistance in assembly, please contact our bilingual (English and Spanish) customer service department at:



Seville Classics, Inc.

19401 Harborage Way Torrance, CA 90501 USA

Telephone: (800) 323-5565 within USA

Fax: (310) 533-3899

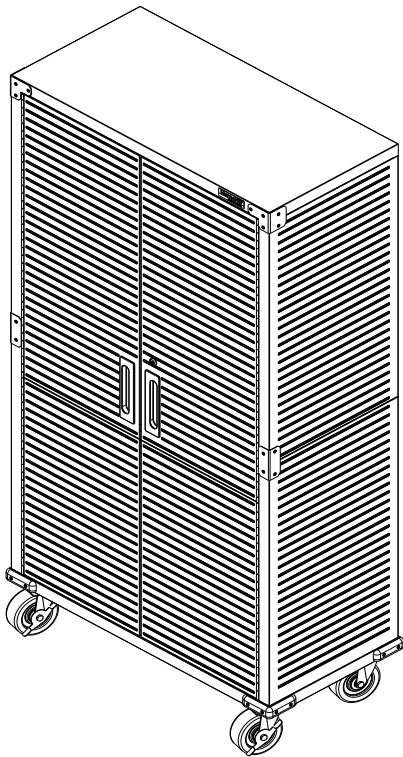
Hours: 8:30am - 4:30pm (Pacific Standard Time)

E-mail: support@sevilleclassics.com

Website & Online Store: www.sevilleclassics.com

*****Please visit our website or call and inquire about our additional UltraHD® Line*****

UltraHD® Line



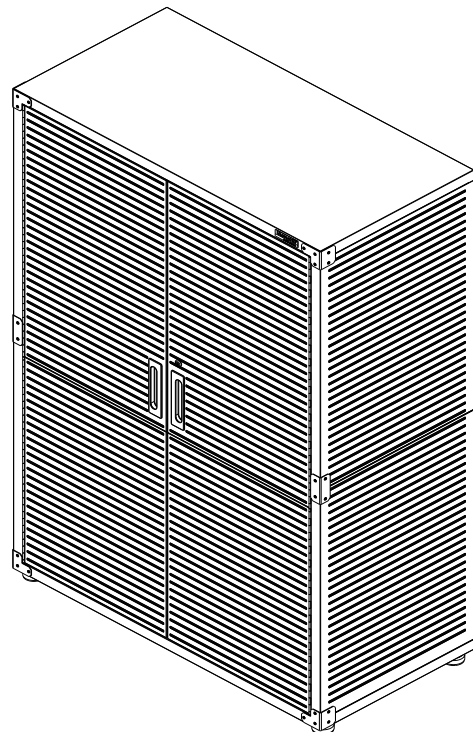
UltraHD® Tall Storage Cabinet

Model No. 16236 (Granite)

Model No. 20143 (Graphite)

Model No. 20153 (Red)

Model No. 20133 (White)



UltraHD® Mega Storage Cabinet

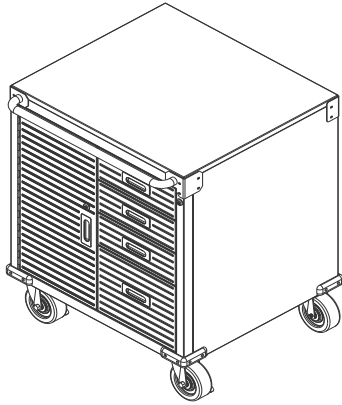
Model No. 16238 (Granite)

Model No. 20148 (Graphite)

Model No. 20158 (Red)

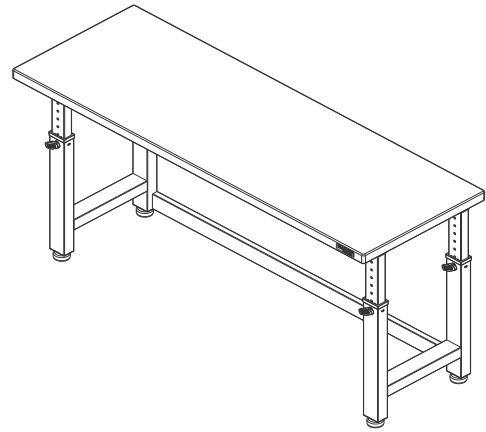
Model No. 20138 (White)

UltraHD® Line



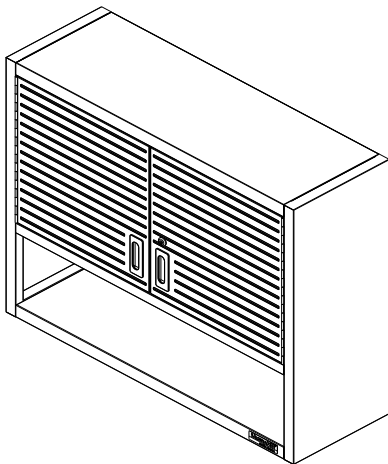
UltraHD® Rolling Cabinet

Model No. 20225 (Granite)
Model No. 20081 (Graphite)
Model No. 20082 (Red)
Model No. 20083 (White)



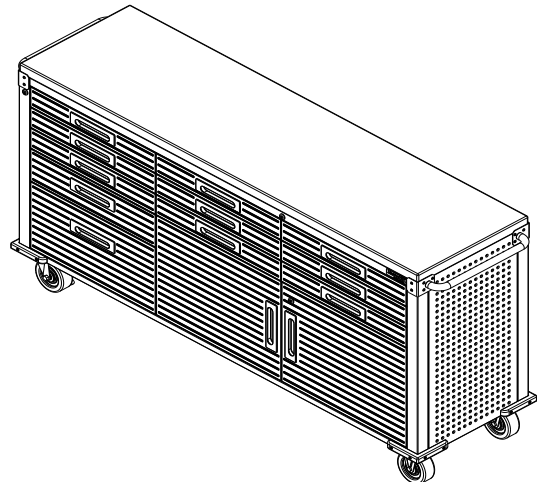
UltraHD® 6-Foot Height Adjustable Workbench

Model No. 20292 (Granite)
Model No. 20293 (Graphite)
Model No. 20134 (Red)
Model No. 20131 (White)



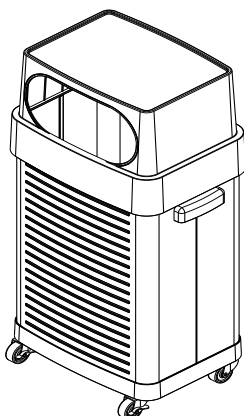
UltraHD® Wall Cabinet with Open Shelf

Model No. 20230 (Granite)
Model No. 20140 (Graphite)
Model No. 20150 (Red)
Model No. 20130 (White)



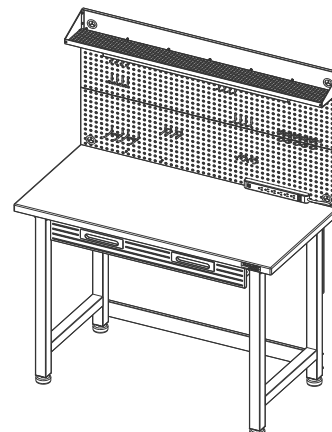
UltraHD® 2-Door Rolling Workbench

Model No. 20262 (Granite)
Model No. 20142 (Graphite)
Model No. 20152 (Red)
Model No. 20132 (White)



UltraHD® Rolling Trash Bin

Model No. 20215



UltraHD® Lighted Workcenter

Model No. 20247 (Granite)
Model No. 20246 (Graphite)
Model No. 20157 (Red)
Model No. 20291 (White)