



FITFOLD™ JOGGER STROLLER AND TRAVEL SYSTEM Seat Removal

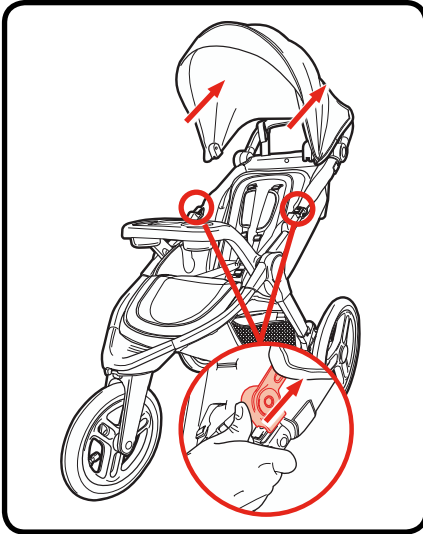
QUICK START GUIDE

This quick start guide is here to help you get started quickly, but please remember to read and understand your instruction manual for full details on how to use your car seat.

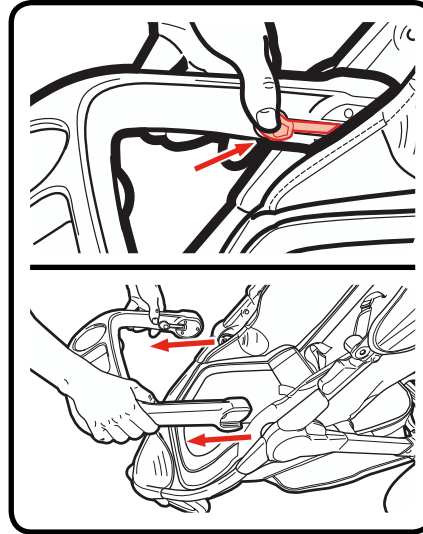
NWL0000898592A 9/18



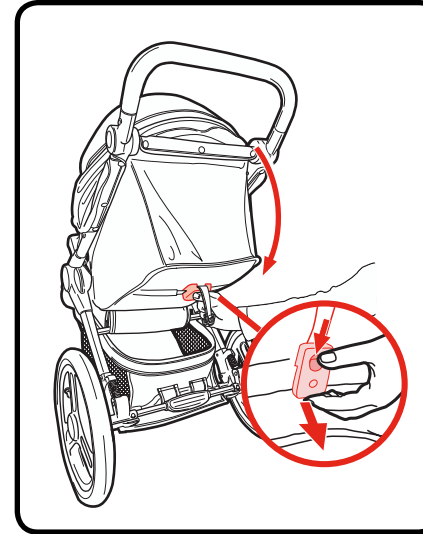
1 REMOVE canopy by sliding off mounts



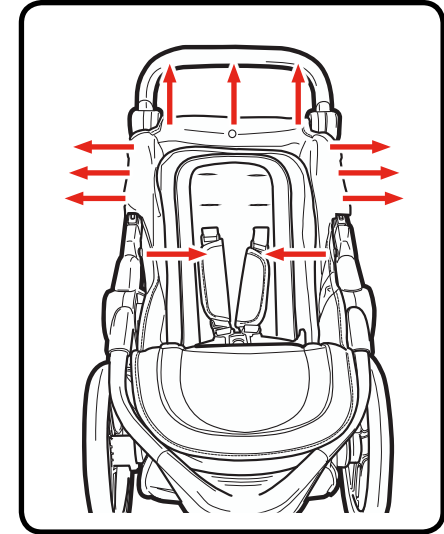
2 REMOVE child's tray



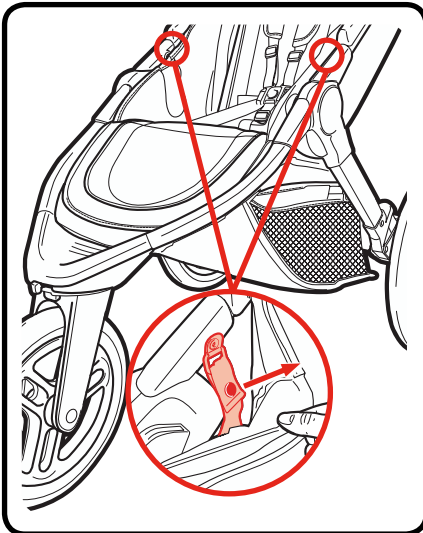
3 RECLINE the seat back



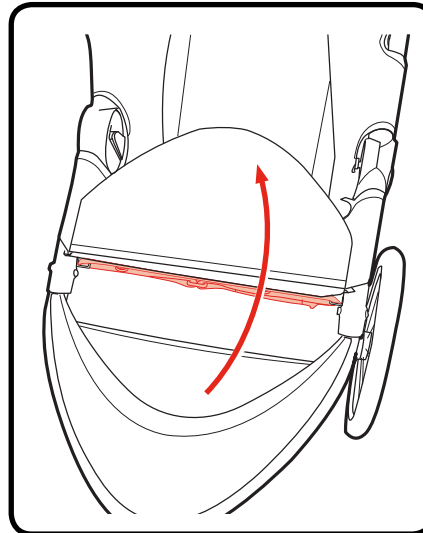
4 UNSNAP 8 side snaps and 3 top snaps. Two of the side snaps are on the inside of the frame



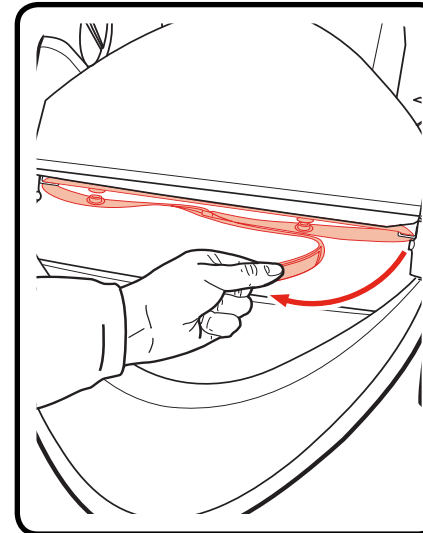
5 UNSNAP lower webbing straps



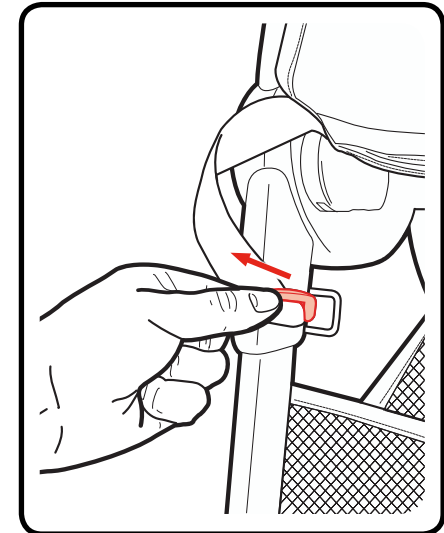
6 LIFT calf support and locate support strap



7 RELEASE the hook and loop tape and unsnap 2 snaps



8 TURN plastic ring sideways and **REMOVE** straps from metal rings on both front legs



For full details on how to remove the seat pad – see instruction manual pages 18-22
Need more help? VIDEOS AVAILABLE ON GRACOBABY.COM



FITFOLD™ JOGGER STROLLER AND TRAVEL SYSTEM

Seat Removal

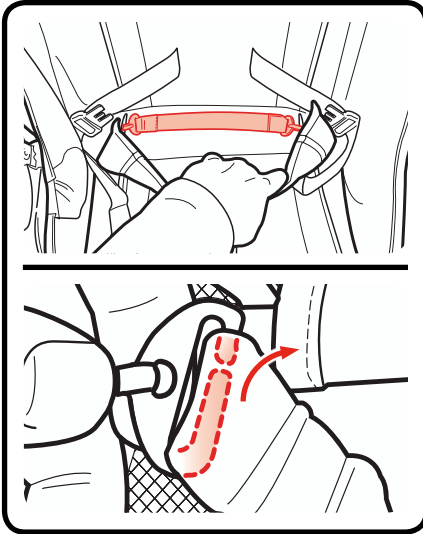
QUICK START GUIDE

NWL0000898592A 9/18

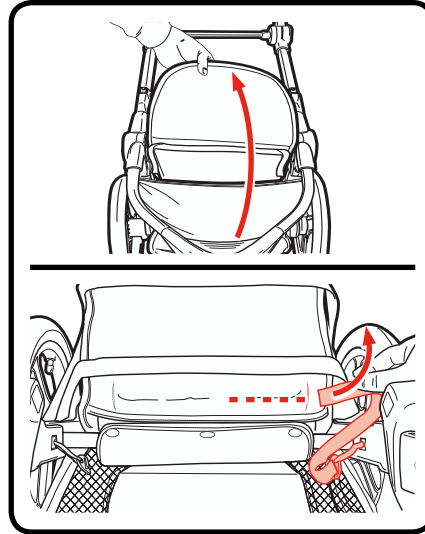
This quick start guide is here to help you get started quickly, but please remember to read and understand your instruction manual for full details on how to use your car seat.



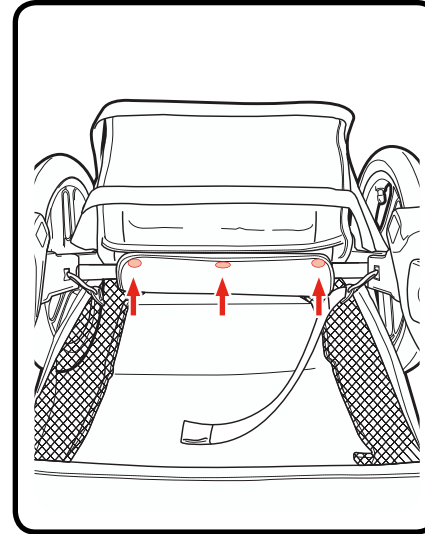
9 **OPEN** the fold strap pocket and **SEPARATE** the strap from **ONE** of the D-Rings



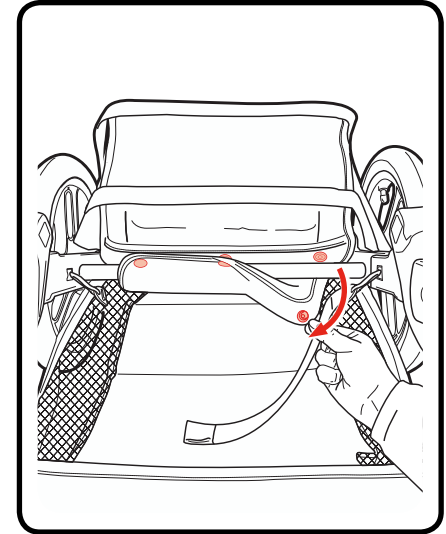
10 **PULL** the calf support up and over and pull the fold strap out of the seat pad



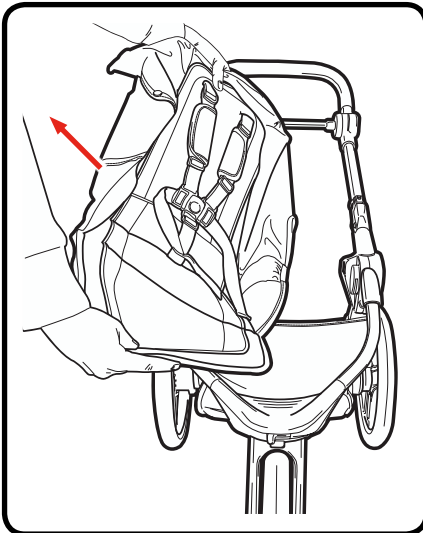
11 **LOCATE** the 3 lower snaps



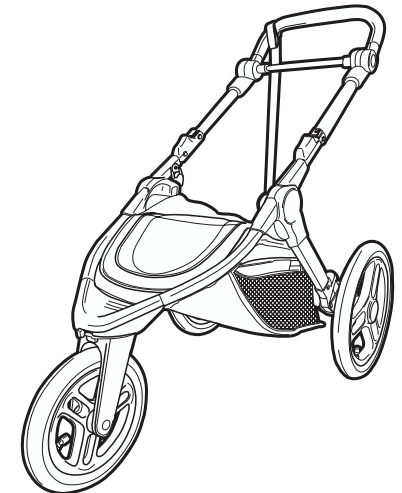
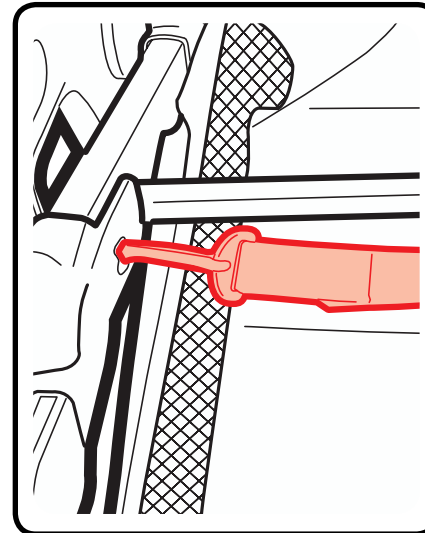
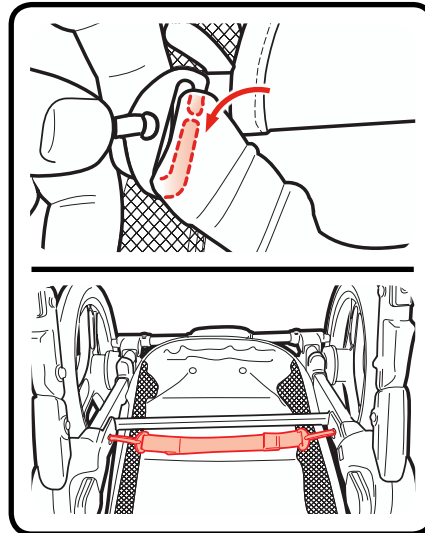
12 **UNSNAP** the 3 lower snaps from the bar under the seat



13 **REMOVE** seat from frame



14 **RECONNECT** the fold strap to the D-Ring and make sure the D-Ring opening is covered



For full details on how to remove the seat pad – see instruction manual pages 18-22
Need more help? VIDEOS AVAILABLE ON GRACOBABY.COM



FITFOLD™ JOGGER STROLLER AND TRAVEL SYSTEM Seat Attachment

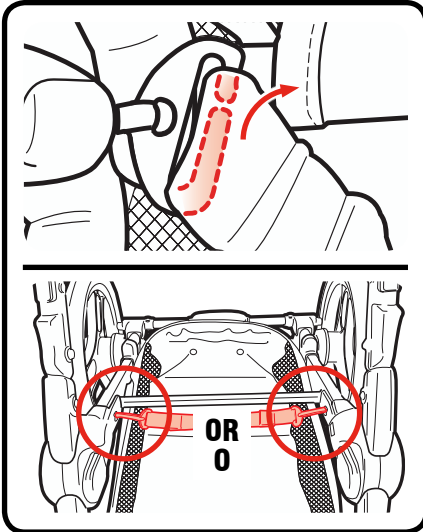
QUICK START GUIDE

NWL0000898592A 9/18

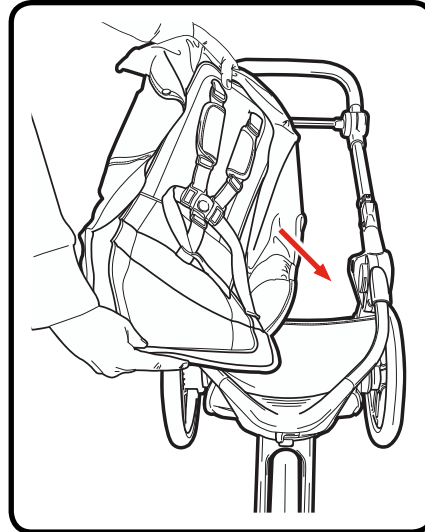
This quick start guide is here to help you get started quickly, but please remember to read and understand your instruction manual for full details on how to use your car seat.



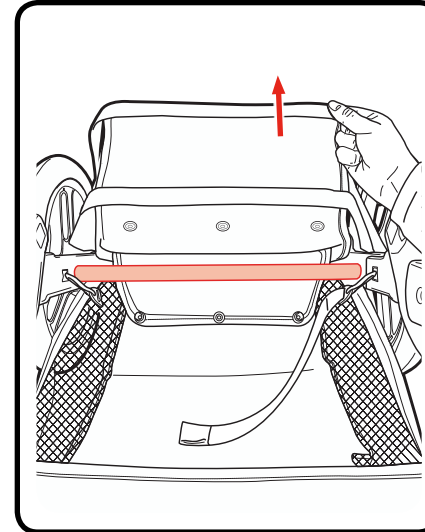
1 REMOVE the fold strap from **ONE** of the D-Rings



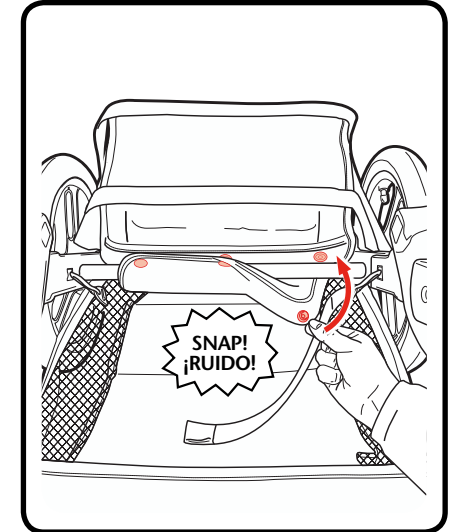
2 LAY the seat on the frame



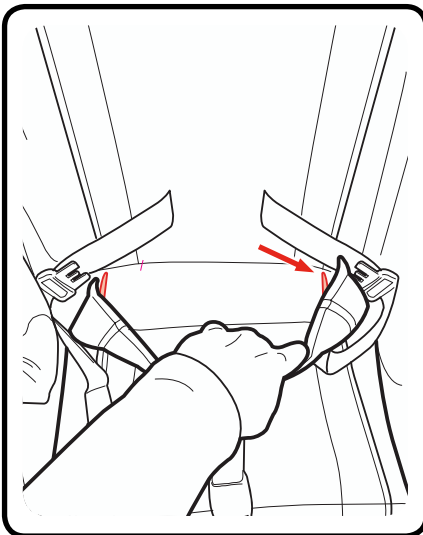
3 FLIP the bottom of the seat pad back to expose metal bar



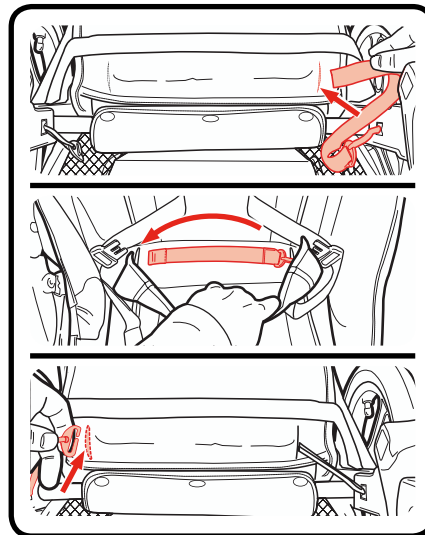
4 WRAP the flap around the metal bar and snap the 3 snaps



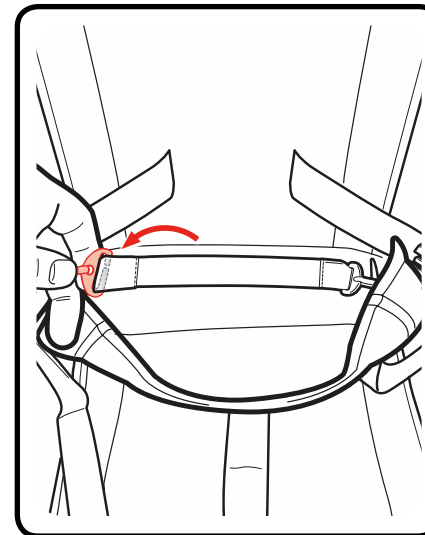
5 LOCATE the fold strap hole



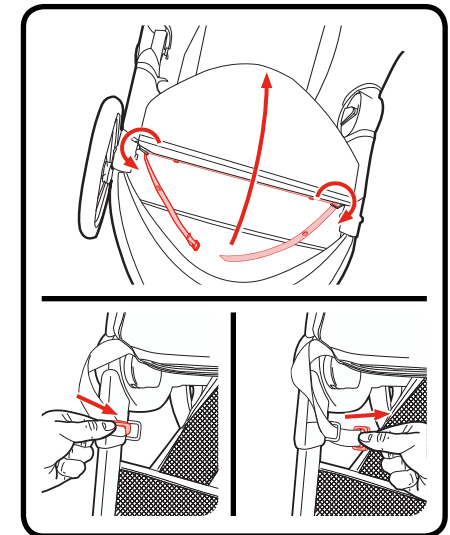
6 INSERT the fold strap and insert the D-Ring



7 RECONNECT the D-Ring



8 LIFT calf support and thread straps into metal rings



For full details on how to attach the seat pad – see instruction manual pages 23-27

Need more help? VIDEOS AVAILABLE ON GRACOBABY.COM



FITFOLD™ JOGGER

STROLLER AND TRAVEL SYSTEM

Seat Attachment

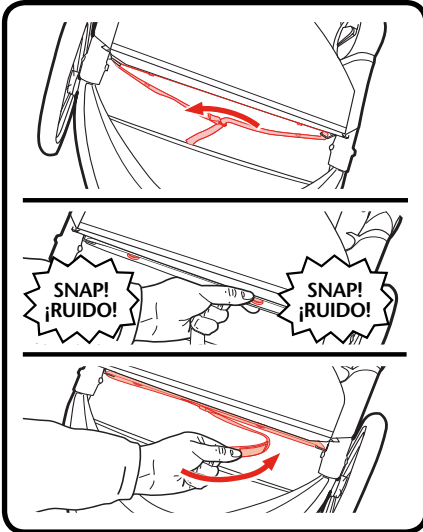
QUICK START GUIDE

NWL0000898592A 9/18

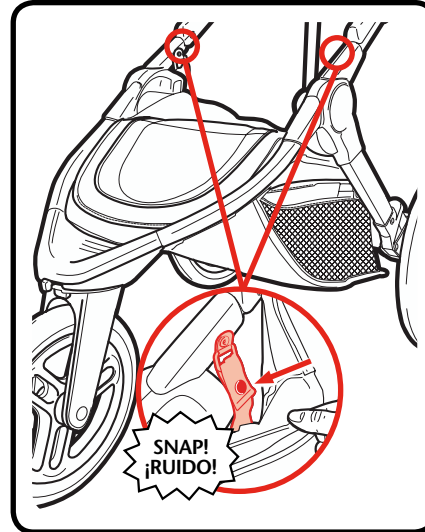
This quick start guide is here to help you get started quickly, but please remember to read and understand your instruction manual for full details on how to use your car seat.



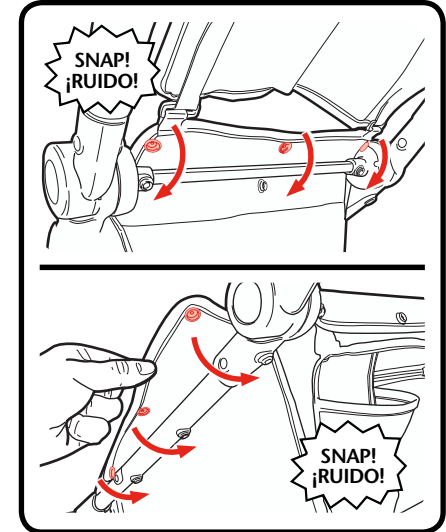
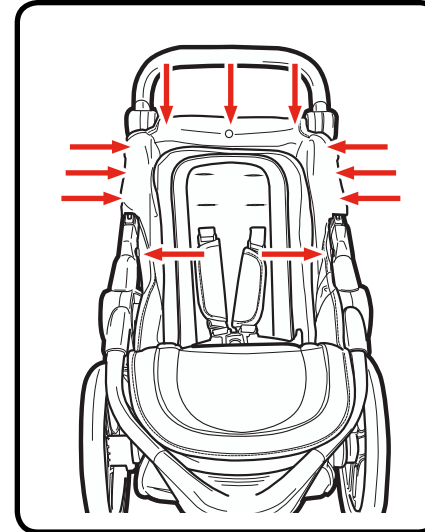
9 **INSERT** calf support straps & snap the 2 snaps. **ATTACH** the hook and loop tape.



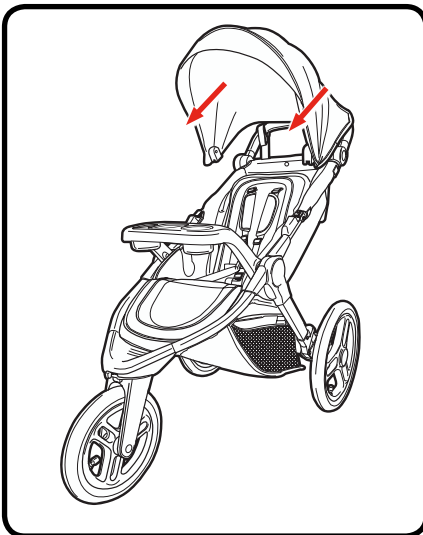
10 **THREAD** lower webbing and fasten the snaps



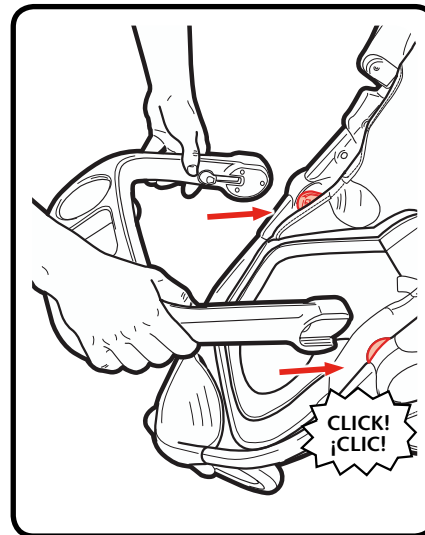
11 **FASTEN** the 3 snaps at the top and the fasten the other 8 snaps on the sides. You **MUST** wrap the seat pad over the frame tubes



12 **INSTALL** the canopy



13 **ATTACH** child's tray



For full details on how to attach the seat pad – see instruction manual pages 23-27
Need more help? VIDEOS AVAILABLE ON GRACOBABY.COM