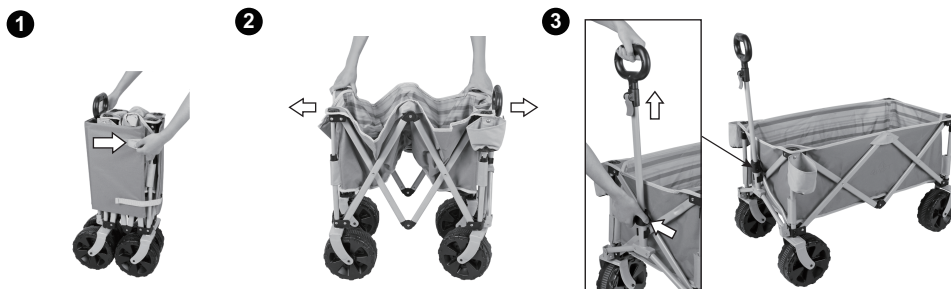


INSTRUCTION

⚠ WARNING

1. Use care when assembling/disassembling the cart so fingers are not pinched.
2. This product has been designed for storing and transporting only.
3. This product is not a toy for children. Do not sit in it.
4. Exceeding maximum capacity limit may cause damage to the product. Maximum load is 225 lbs.
5. Keep the cart away from fire or high temperature environments as it may cause damage to plastic parts.
6. Do not use the cart on uneven surfaces as it may shorten the product's life.
7. Make sure to fasten all items when hauling to avoid anything falling out. Do not run while pulling the cart.
8. Avoid storing the product outside as it may cause damage to the frame or plastic parts.
9. For proper care, remove dirt and moisture after each use.
10. To clean fabric, use a light neutral cleaning agent.
11. Examine cart before each use for wear and tear. Discontinue use immediately if any damaged parts are found.

Set up the cart

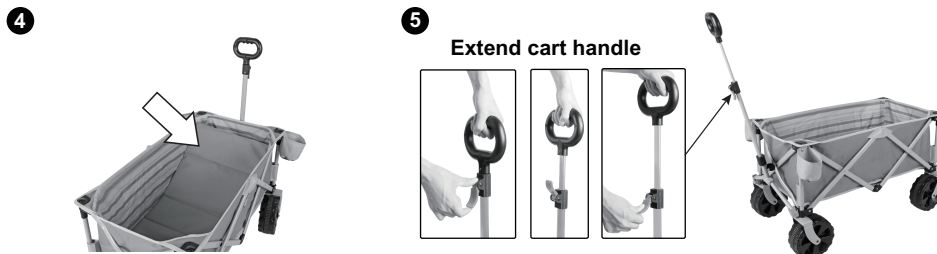


1. Unfasten the side hook and loop tabs and take off the removable floor wrapped around the cart. These removable floor will serve as the cart bottom board.

2. Unfold the cart as arrows show. Be careful not to push too hard if the cart doesn't open easily.

3. Press the button to pull out the plastic handle.

WARNING! Pinch hazard – Exercise caution when assembling/disassembly the cart. Keep hands and fingers away from moving parts.



4. Put the removable floor in the bottom of the cart. It is now ready for use.

5. Release the red plastic piece to extend additional handle length. Push down on the red plastic piece to lock. This will provide an extra 6 inches when pulling the cart.

Fold the cart



1. Remove bottom removable floor. Pull the webbing handle found in the middle of the bottom of the cart to fold it.

2. Make sure front wheels are facing toward the front of the cart then wrap the removable floor around the cart and fasten the side hook and loop tabs.

MADE IN CHINA
AMERICAN SPORTS LICENSING INC.

PATENT NO. US9,073,564B2