

CEH03016Z



**RECHARGEABLE PUMP
OWNER'S MANUAL
Model No. 62155**



IMPORTANT SAFETY NOTICE:

READ CAREFULLY BEFORE OPERATING AND
SAVE THESE INSTRUCTIONS.

WARNING:

TO AVOID THE RISK OF ELECTRIC SHOCK, DO
NOT EXPOSE THE PUMP TO WATER OR RAIN.
KEEP THE PUMP DRY.
FOR INDOOR USE ONLY.
FOR HOUSEHOLD USE ONLY.

Use only with Listed/Certified Information
Technology (Computer) Equipment, ITE Power
Supply or Class 2 Power Unit.

1. Do not use the pump continuously more than
5 minutes. It can only be used again after at least
15 minutes of cooling.
2. This device complies with part 15 of the FCC
Rules. Operation is subject to the following two

- conditions: (1) This device may not cause harmful interference, and (2) this device must accept any interference received, including interference that may cause undesired operation.
3. Any changes or modifications to this unit not expressly approved by the party responsible for compliance could void the user's authority to operate the equipment.

NOTE: This equipment has been tested and found to comply with the limits for a Class B digital device, pursuant to part 15 of the FCC Rules. These limits are designed to provide reasonable protection against harmful interference in a residential installation. This equipment generates, uses and can radiate radio frequency energy and, if not installed and used in accordance with the instructions, may cause harmful interference to radio communications. However, there is no guarantee that interference will not occur in a particular installation. If this equipment does cause harmful interference to radio or television reception, which can be determined by turning the equipment off and on,

the user is encouraged to try to correct the interference by one or more of the following measures:

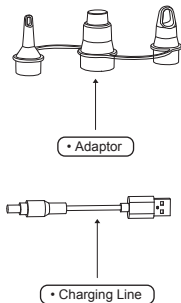
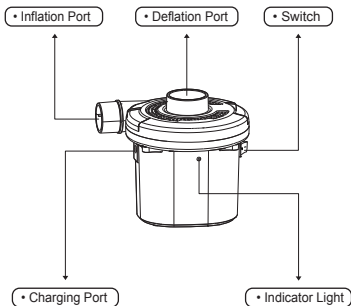
- Reorient or relocate the receiving antenna.
 - Increase the separation between the equipment and receiver.
 - Connect the equipment into an outlet on a circuit different from that to which the receiver is connected.
 - Consult the dealer or an experienced radio/ TV technician for help.
4. The battery must be removed from the appliance before it is scrapped.
5. The appliance must be disconnected from the supply mains when removing the battery. This appliance contains battery that is non-replaceable.
- The battery is to be disposed of safely.
- The appliance is only to be used with the charging supply cord provided with the appliance.

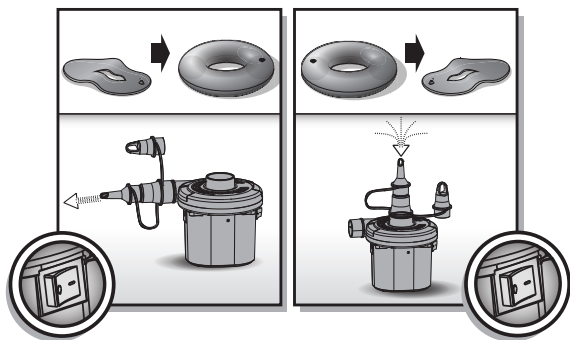
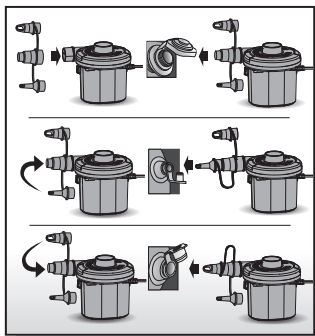
CHARGING INSTRUCTION:

1. Four rechargeable batteries included. Please charge for at least 7 - 8 hours before using for the first time so as not to affect the battery life and battery capacity.
2. The pump can only be used with provided Micro USB charging line. The charging voltage is DC5V.
3. When using charger with DC5V 0.5 A - 2 A electricity, the charging time will be around 5 hours. If other types of USB are used for charging, the charging time will be extended (up to 24 hours).
4. When charging, the indicator light is on.
A red light indicates the electricity is not enough.
A green light indicates the electricity is full and the unit is charging.
5. Do not block the rotation of the motor or the fan blades. Do not insert the objects into or interfere with the fan chamber.
6. The pump must be stored in a dry location at 20°C-45°C temperature. If the pump is not used for more than 12 months, the battery will discharge. The battery must be charged every 6 months.

MAINTENANCE AND STORAGE

1. Use a dry cloth to gently clean all surfaces.
2. Store in a cool, dry place and out of children's reach.





NOTE: Drawings for illustration purpose only.
May not reflect actual product. Not to scale.

DICK'S LIMITED WARRANTY

Who is Covered?

This limited warranty ("Limited Warranty") covers only the person who first purchased the product. This Limited Warranty expires at the time of transfer and is not transferable to anyone else. Proof of purchase is required to make a warranty claim.

DICK'S warrants this product to be free from defects in workmanship and materials as follows:

What the Warranty Covers

This Limited Warranty covers defects in materials and workmanship.

What the Warranty Does Not Cover

This Limited Warranty does not cover:

- Expendable items, including by way of example only and not by way of limitation: batteries, light bulbs, fuses, zippers, tires, belts, shoe soles, fabric, and other items that experience wear as a result of normal use.
- Damage through improper use, negligence, abuse, misuse, transportation, acts of nature, or accident, including failure to perform routine maintenance or follow the assembly and/or operating instructions supplied with the product.
- Products used in commercial or rental applications.
- Products that have been modified using replacement parts that were not provided by DICK'S.
- Defects or damage caused by using third-party parts or services.

This Limited Warranty does not cover any consequential or incidental damages of any kind, including transportation to get warranty service, loss of time, and loss of use. Some states do not allow the exclusion or limitation of incidental or consequential damages, so the above limitation may not apply to you.

What the Period of Coverage Is

This Limited Warranty lasts for a period of one year from receipt of the product. Any implied warranty arising under state law is limited in duration to the one-year period of this Limited Warranty. Some states do not allow limitations on how long an implied warranty lasts, so the above limitation may not apply to you.

How to Make a Warranty Claim

You can make a warranty claim by bringing the product to any store location of the chain the product was purchased as long as: (1) it meets the warranty criteria, (2) is within the warranty period (one year), (3) you have a valid proof of purchase and provide that to the store at the time of making the warranty claim, and (4) you are the original purchaser of the product. If you are unable to find your valid proof of purchase, please contact 1-877-846-9997 and a customer service representative may be able to assist.

Please direct all warranty service inquiries as follows:

If in writing, mail to:

DICK'S Sporting Goods, Inc.
345 Court St.
Coraopolis, PA 15108
Attn: Customer Service

If by telephone, call: **1-877-846-9997**

What DICK'S Will Do to Correct the Problem

Once you make a valid warranty claim, DICK's will either:

- Return or exchange the product; or
- Provide a free replacement part, if applicable; or
- Repair the product for free, if applicable.

How State Law Applies

This Limited Warranty gives you specific legal rights, and you may also have other rights which vary from state to state.

