

CEH03014Z

QUEST

BATTERY PUMP OWNER'S MANUAL Model No. 62141



IMPORTANT SAFETY NOTICE:

READ CAREFULLY BEFORE OPERATING AND
SAVE THESE INSTRUCTIONS.

WARNING:

TO AVOID THE RISK OF ELECTRIC SHOCK,
DO NOT EXPOSE TO WATER OR RAIN.
FOR INDOOR AND OUTDOOR USE.

1. Children are strictly prohibited from operating pump.
2. Inflation and deflation ports should be kept free of debris during use.
3. Product must be stored in a dry location.

Battery Precaution

1. Do not mix old and new batteries.
2. Do not mix the different types of batteries.

- Do not mix alkaline, standard (Carbon - Zinc), or rechargeable (Ni-Cd, Ni-MH, etc.) batteries.
3. Ensure batteries are installed correctly with regard to polarity (+ and -).
 4. Do not short-circuit the battery.
 5. Never attempt to recharge primary batteries as this may cause leakage, fire, or explosion.
 6. Rechargeable batteries are to be removed from this product before being charged.
 7. Never attempt to disassemble or open batteries as this can lead to electrolyte burns.
 8. Remove batteries from equipment which is not to be used for an extended period of time.
 9. Exhausted batteries are to be removed from this product.
 10. Do not dispose of product and its batteries in fire. Check your local regulations for proper disposal instructions.
 11. Batteries shall not be exposed to excessive heat such as sunshine, fire or the similar.
 12. Keep batteries out of the reach of children.
 13. Only use LR20/D batteries (not included).

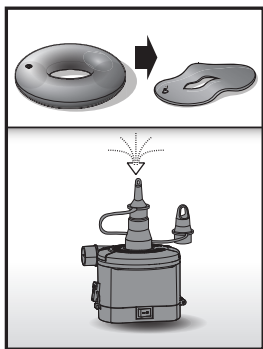
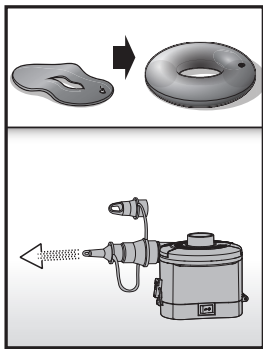
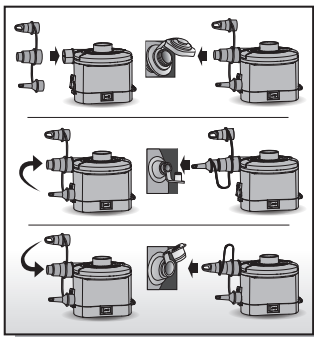
NOTE 1: Not all air valves can be deflated by the pump, some one-way valves require manual deflation.

NOTE 2: Some items have a special air-tight inner safety valve, which prevents air loss.

We recommend these items be deflated by simply unscrewing the valve instead of deflating with the pump.

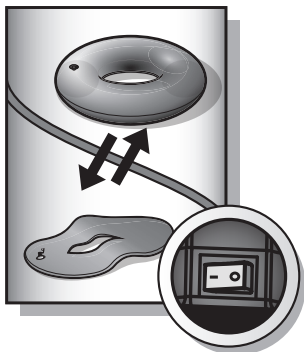
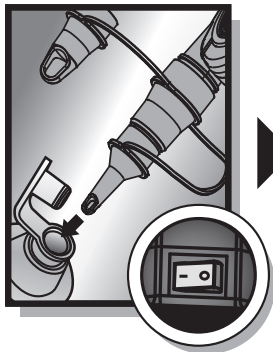
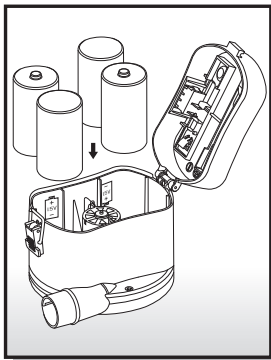
CAUTION: YOU MUST ENSURE THE PUMP IS UNPLUGGED BEFORE ANY MAINTENANCE BEGINS OR SEVERE RISK OF INJURY OR DEATH EXISTS.

1. Use a dry cloth to gently clean all surfaces.
2. Store in a cool, dry place and out of children's reach.



NOTICE:

Drawings for illustration purpose only. May not reflect actual product. Not to scale.



DICK'S LIMITED WARRANTY

Who is Covered?

This limited warranty ("Limited Warranty") covers only the person who first purchased the product. This Limited Warranty expires at the time of transfer and is not transferable to anyone else. Proof of purchase is required to make a warranty claim.

DICK'S warrants this product to be free from defects in workmanship and materials as follows:

What the Warranty Covers

This Limited Warranty covers defects in materials and workmanship.

What the Warranty Does Not Cover

This Limited Warranty does not cover:

- Expendable items, including by way of example only and not by way of limitation: batteries, light bulbs, fuses, zippers, tires, belts, shoe soles, fabric, and other items that experience wear as a result of normal use.
- Damage through improper use, negligence, abuse, misuse, transportation, acts of nature, or accident, including failure to perform routine maintenance or follow the assembly and/or operating instructions supplied with the product.
- Products used in commercial or rental applications.
- Products that have been modified using replacement parts that were not provided by DICK'S.
- Defects or damage caused by using third-party parts or services.

This Limited Warranty does not cover any consequential or incidental damages of any kind, including transportation to get warranty service, loss of time, and loss of use. Some states do not allow the exclusion or limitation of incidental or consequential damages, so the above limitation may not apply to you.

What the Period of Coverage Is

This Limited Warranty lasts for a period of one year from receipt of the product. Any implied warranty arising under state law is limited in duration to the one-year period of this Limited Warranty. Some states do not allow limitations on how long an implied warranty lasts, so the above limitation may not apply to you.

How to Make a Warranty Claim

You can make a warranty claim by bringing the product to any store location of the chain the product was purchased as long as: (1) it meets the warranty criteria, (2) is within the warranty period (one year), (3) you have a valid proof of purchase and provide that to the store at the time of making the warranty claim, and (4) you are the original purchaser of the product. If you are unable to find your valid proof of purchase, please contact 1-877-846-9997 and a customer service representative may be able to assist.

Please direct all warranty service inquiries as follows:

If in writing, mail to:

DICK'S Sporting Goods, Inc.
345 Court St.
Coraopolis, PA 15108
Attn: Customer Service

If by telephone, call: **1-877-846-9997**

What DICK'S Will Do to Correct the Problem

Once you make a valid warranty claim, DICK's will either:

- Return or exchange the product; or
- Provide a free replacement part, if applicable; or
- Repair the product for free, if applicable.

How State Law Applies

This Limited Warranty gives you specific legal rights, and you may also have other rights which vary from state to state.