



**LUXURY QUEEN AIRBED  
OWNER'S MANUAL  
Built-in AlwayzAire® AC Electric Pump**



# IMPORTANT SAFETY INSTRUCTIONS

## READ AND FOLLOW ALL INSTRUCTIONS.

Carefully read, understand, and follow all information in this user manual before installing and using the air mattress.

These warnings, instructions, and safety guidelines address some common risks, but they cannot cover all risks and dangers in all cases. Always use caution, common sense, and good judgement when enjoying the air mattress. Retain this information for future use. In addition, the following information can be supplied depending on the air mattress type.

Weight capacity: 772 lbs (350 kg)


## **WARNING:**


1. For indoor use only. Household use only.
2. Infants have suffocated on inflatable mattresses/airbeds. Never place infant aged birth to 15 months to sleep on this inflatable air mattress/airbed. Infants can suffocate on an underinflated or deflated mattress, on bedding, by co-sleeping with another person, and by entrapment between the mattress and bed frame or between the mattress and a vertical surface.
3. Children can be entrapped between the inflatable mattress and an adjacent vertical surface. Provide at least a shoulder width space between the inflatable mattress/airbed and adjacent vertical surfaces such as walls, dressers, or other objects.
4. Always keep the inflatable mattress fully inflated when in use.
5. This appliance has a polarized plug (one blade is wider than the other). To reduce the risk of electric shock, this plug is intended to fit in a polarized outlet only one way. If the plug does not fit fully in the outlet, reverse the plug. If it still does not fit, contact a qualified electrician. Do not attempt to defeat this safety feature.
6. Motor run time should not exceed 5 minutes. Operator should allow motor to cool for 5 minutes between uses.
7. This device complies with part 15 of the FCC Rules. Operation is subject to the following two conditions: (1) This device may not cause harmful interference, and (2) this device must accept any interference received, including interference that may cause undesired operation.
8. Any changes or modifications to this unit not expressly approved by the party responsible for compliance could void the user's authority to operate the equipment.


9. This equipment has been tested and found to comply with the limits for a Class B digital device, pursuant to part 15 of the FCC Rules. These limits are designed to provide reasonable protection against harmful interference in a residential installation. This equipment generates, uses and can radiate radio frequency energy and if not installed and used in accordance with the instructions, may cause harmful interference to radio communications. However, there is no guarantee that interference will not occur in a particular installation. If this equipment does cause harmful interference to radio or television reception, which can be determined by turning the equipment off and on, the user is encouraged to try to correct the interference by one or more of the following measures:
- Reorient or relocate the receiving antenna.
  - Increase the separation between the equipment and receiver.
  - Connect the equipment into an outlet on a circuit different from that to which the receiver is connected.
  - Consult the dealer or an experienced radio/TV technician for help.
10. Product must be stored in a dry location.

## TECHNICAL INSTRUCTIONS

1. To avoid the risk of electric shock, do not expose to water or rain.

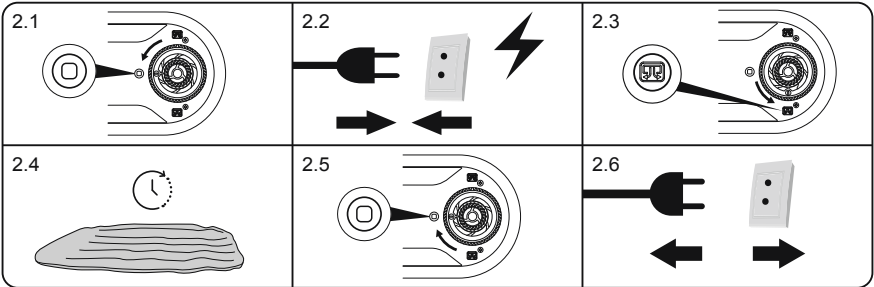
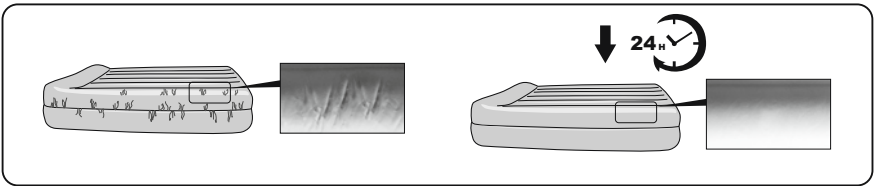
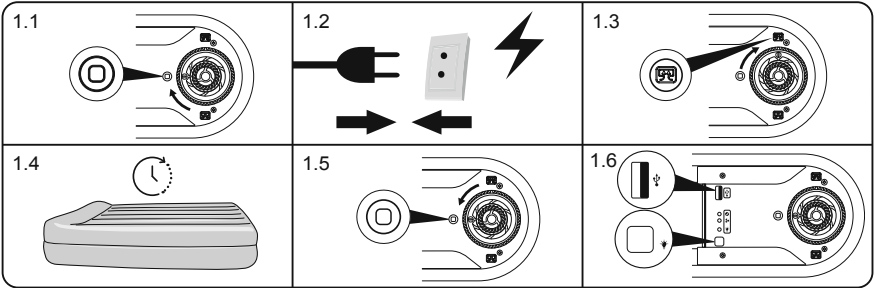
 **Green light:** When the green light is on, the air mattress has reached optimal air pressure.  
Turn the knob to the off position. (fig. 1.5)  
When the green light is flashing, the airbed is ready to be inflated.

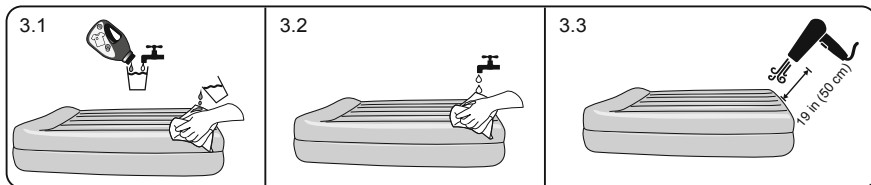
 **Blue light:** When the blue light is on, the secondary pump has turned on.  
When the green light and blue lights are flashing, it is an alarm. It means the air mattress cannot reach the designated air pressure level. Check the air mattress to ensure the valve is tightened and there is no air leak.

 **USB port:** Can be used when the pump plugs into the wall socket.  
**Specification:** DC 5V 1A

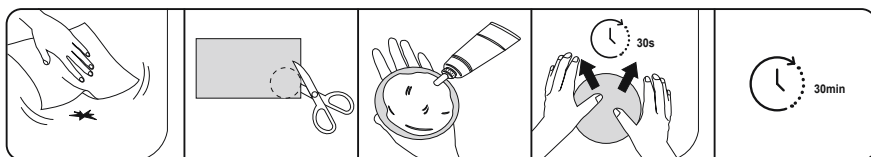
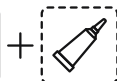
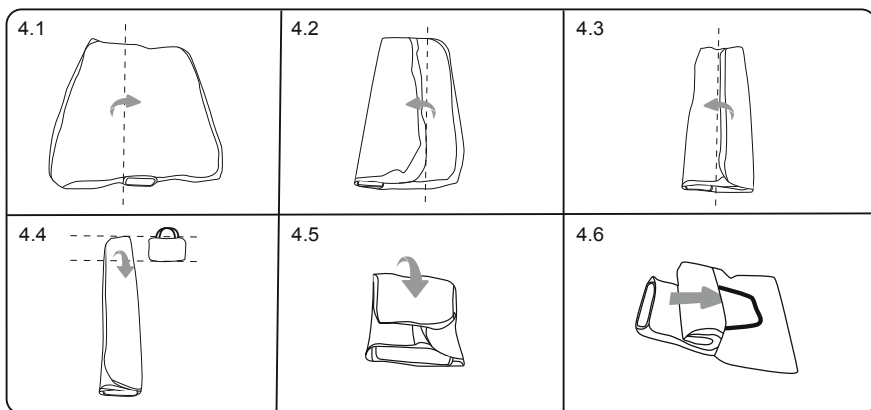
 **Night light**

2. Don't unplug the pump. To fully enjoy the benefits of the dual pump's features, leave it plugged in.
3. Drawings for illustration purpose only. May not reflect actual product. Not to scale.





≥59°F/15°C



# DICK'S LIMITED WARRANTY

## Who is Covered?

**This limited warranty ("Limited Warranty") covers only the person who first purchased the product. This Limited Warranty expires at the time of transfer and is not transferable to anyone else. Proof of purchase is required to make a warranty claim.**

DICK'S warrants this product to be free from defects in workmanship and materials as follows:

## What the Warranty Covers

This Limited Warranty covers defects in materials and workmanship.

## What the Warranty Does Not Cover

This Limited Warranty does not cover:

- Expendable items, including by way of example only and not by way of limitation: batteries, light bulbs, fuses, zippers, tires, belts, shoe soles, fabric, and other items that experience wear as a result of normal use.
- Damage through improper use, negligence, abuse, misuse, transportation, acts of nature, or accident, including failure to perform routine maintenance or follow the assembly and/or operating instructions supplied with the product.
- Products used in commercial or rental applications.
- Products that have been modified using replacement parts that were not provided by DICK'S.
- Defects or damage caused by using third-party parts or services.

This Limited Warranty does not cover any consequential or incidental damages of any kind, including transportation to get warranty service, loss of time, and loss of use. Some states do not allow the exclusion or limitation of incidental or consequential damages, so the above limitation may not apply to you.

## What the Period of Coverage Is

This Limited Warranty lasts for a period of one year from receipt of the product. Any implied warranty arising under state law is limited in duration to the one-year period of this Limited Warranty. Some states do not allow limitations on how long an implied warranty lasts, so the above limitation may not apply to you.

## How to Make a Warranty Claim

You can make a warranty claim by bringing the product to any store location of the chain the product was purchased as long as: (1) it meets the warranty criteria, (2) is within the warranty period (one year), (3) you have a valid proof of purchase and provide that to the store at the time of making the warranty claim, and (4) you are the original purchaser of the product. If you are unable to find your valid proof of purchase, please contact 1-877-846-9997 and a customer service representative may be able to assist.

Please direct all warranty service inquiries as follows:

If in writing, mail to:

**DICK'S Sporting Goods, Inc.**  
**345 Court St.**  
**Coraopolis, PA 15108**  
**Attn: Customer Service**

If by telephone, call: **1-877-846-9997**

## What DICK'S Will Do to Correct the Problem

Once you make a valid warranty claim, DICK'S will either:

- Return or exchange the product; or
- Provide a free replacement part, if applicable; or
- Repair the product for free, if applicable.

## How State Law Applies

This Limited Warranty gives you specific legal rights, and you may also have other rights which vary from state to state.