

MTRAIN243

# *marucci*

## MULTI POSITION BATTING TEE OWNER'S MANUAL



DICK'S Sporting Goods 345 Court Street Coraopolis, PA 15108

# TABLE OF CONTENTS

SECTION	PAGE
BEFORE YOU BEGIN	1
IMPORTANT SAFETY NOTICE	2
IMPORTANT CARE AND MAINTENANCE	2
PARTS LIST	2
ASSEMBLY INSTRUCTIONS	3-4
LIMITED WARRANTY	5

## BEFORE YOU BEGIN

Thank you for selecting the marucci MULTI POSITION BATTING TEE. For your safety and benefit, read this manual carefully before using the product. If you have any questions, or find there are missing or damaged parts, please contact our Customer Service Agents.

**Toll-Free Customer Service Number**  
**1-877-846-9997**  
**Mon. – Fri. 9 a.m. – 5 p.m. EST**

RETAIN THESE INSTRUCTIONS FOR FUTURE USE



## IMPORTANT SAFETY NOTICE

Read these instructions before using this product. This product is intended to be used by a single user during baseball and softball training drills. **To avoid serious injury** during assembly, disassembly, use, adjustment and/or movement of the Marucci Multi Position Batting Tee, **the following warnings and instructions MUST be observed at all times:**



### **WARNING**

#### **Important Instructions for Safe Assembly and Use**

1. This product is not intended for children under age 13. Adult supervision during use is required. Never leave the product unattended. Unsupervised children can be injured.
2. Adults only must assemble, disassemble, adjust and/or move the batting tee. All components must be properly assembled prior to use.
3. The tee must be placed on a flat surface that is suitable for play while ensuring maximum user safety. Placing on uneven or sloped surfaces can lead to injury.
4. **WARNING: Pinch Point.** Exercise caution when folding tee legs to avoid potential injury. Keep fingers away from collapsible areas.
5. To avoid injury, always wear certified protective equipment when using the batting tee.
6. **ALWAYS** ensure play area is clear while using the batting tee.



## IMPORTANT! CARE AND MAINTENANCE

1. **DO NOT** leave product outdoors in inclement weather as moisture and other elements may adversely affect the performance of the unit. Do not use in severe winds.
2. To extend the life of the product, unit should be stored indoors when not in use. Keep away from fire and heat sources.
3. Examine the product regularly for wear and tear. Discontinue use immediately if any defect is found.

## MULTI POSITION BATTING TEE PARTS LIST

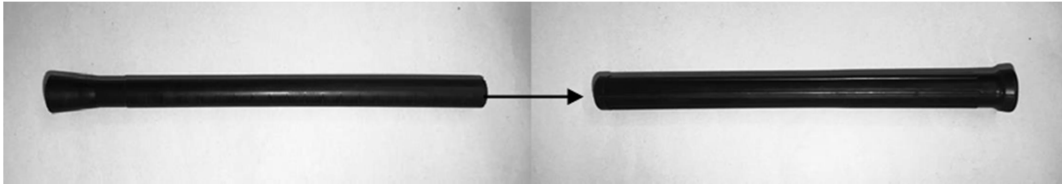
Part #	Description	Qty
1	Base	1
2	Tee Topper	1
3	Bottom Tube	1
4	Tee-Car	1

## ASSEMBLY INSTRUCTIONS

1. Place the Base (Part 1) on the ground at the intended batting location.



2. Slide the Tee-Topper (Part 2) into the Bottom Tube (Part 3). Adjust Part 2 to proper height for batting.



3. Screw the Tee-Car (Part 4) into the Bottom Tube (Part 3). Do not tighten completely to Part 3; leave enough space for Tee-Car (Part 4) to slide onto track.



4. Slide the Tee-Car (Part 4) onto the track of the Base (Part 1).



5. Slide the Tee-Car (Part 4) along the track to hitting position.
  - a) To lock into place, turn the Bottom Tube (Part 3) clockwise to tighten.
  - b) Tighten until the Bottom Tube (Part 3) is tight to base. **DO NOT over tighten.**



6. To adjust hitting position, loosen Bottom Tube (Part 3) by turning counterclockwise.
  - a) Slide Bottom Tube (Part 3) to new hitting position, locking into place by turning clockwise.
  - b) Tighten until the Bottom Tube (Part 3) is tight to base. **DO NOT over tighten.**



Place ball on Tee-Topper (Part B) and hit away!

# LIMITED WARRANTY

Dick's Sporting Goods, Inc. (the "Company") warrants this product to be free from defects in workmanship and materials as follows:

## **Who is Covered**

This Limited Warranty covers only the person who first bought the product. This Limited Warranty is not transferable to anyone else.

## **What the Warranty Covers**

This Limited Warranty covers defects in materials and workmanship.

## **What the Warranty Does Not Cover**

This Limited Warranty does not cover:

- Expendable items, including by way of example only and not by way of limitation: batteries, light bulbs, fuses, zippers, tires, belts, shoe soles, fabric, and other items that experience wear as a result of normal use.
- Damage through improper use, negligence, abuse, misuse, transportation, acts of nature, or accident, including failure to perform routine maintenance or follow the assembly and/or operating instructions supplied with the product.
- Products used in commercial or rental applications.
- Products that have been modified or repaired by anyone not authorized by the Company.

This Limited Warranty does not cover any consequential or incidental damages of any kind, including transportation to get warranty service, loss of time, and loss of use. Some states do not allow the exclusion or limitation of incidental or consequential damages, so the above limitation may not apply to you.

## **What the Period of Coverage Is**

This Limited Warranty lasts for a period of one year from the date of your original purchase. Any implied warranty arising under state law is limited in duration to the one-year period of this Limited Warranty. Some states do not allow limitations on how long an implied warranty lasts, so the above limitation may not apply to you.

## **What the Company Will Do to Correct Problems**

The Company will furnish a replacement part at no charge to you.

## **How You Can Get Service**

Please direct all warranty service inquiries as follows:

If in writing, mail to:

**Dick's Sporting Goods, Inc.  
345 Court St.  
Coraopolis, PA 15108  
Attn: Customer Service**

If by telephone, call: **1-877-846-9997**

## **How State Law Applies**

This Limited Warranty gives you specific legal rights, and you may also have other rights which vary from state to state.