



TH48-E70 Transmission

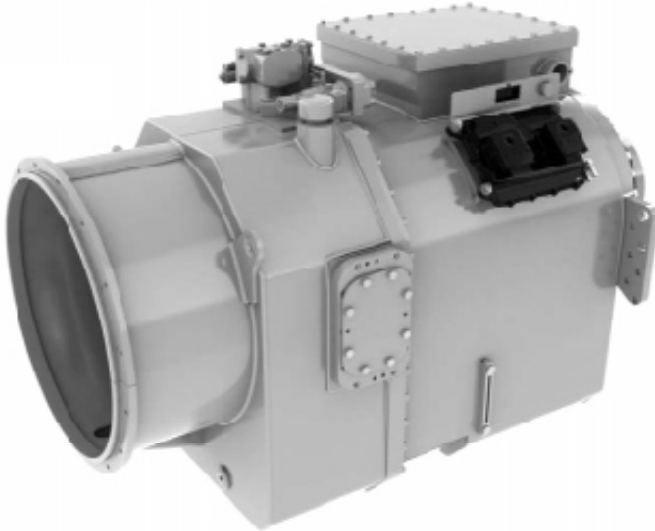


Image shown may not reflect actual transmission

Petroleum

SPECIFICATIONS

Gross Input Power — kW (hp) 895 (1200)
1118 (1500)

Gross Input Torque — N•m (lb-ft)
1200 hp 5484 (4045)
1500 hp 5995 (4422)

Maximum Turbine Torque —
lb-ft (N•m) 7442 (5489)

Rated Input Speed — rpm 2100

Maximum Input Speed — rpm 2200

Weight, Dry (approx) — kg (lb)
Transmission 1694 (3735)
Engine/Transmission Coupling 108 (238)

Gears
Type Straight spur planetary
Forward/Reverse 7F/0R

Transmission Speed Ratios

Gear	Ratio
1F	6.16
2F	4.52
3F	3.33
4F	2.47
5F	1.82
6F	1.36
7F	1.00

STANDARD EQUIPMENT

- Electronic Control Unit (ECU)
- Electronic data link, SAE J1939
- Electrical system 24V
- Integral torque converter

ENGINES FOR OPTIMIZED POWERTRAIN

Cat® C32 ACERT™, C27 ACERT, Cummins QST30 (950-1500 hp ratings)

Note: See Petroleum Transmissions Approved Applications Guide REHS4553 for more information.

TRANSMISSION ROTATION

- Input rotation — Counterclockwise
- Output rotation — Counterclockwise

TORQUE CONVERTER

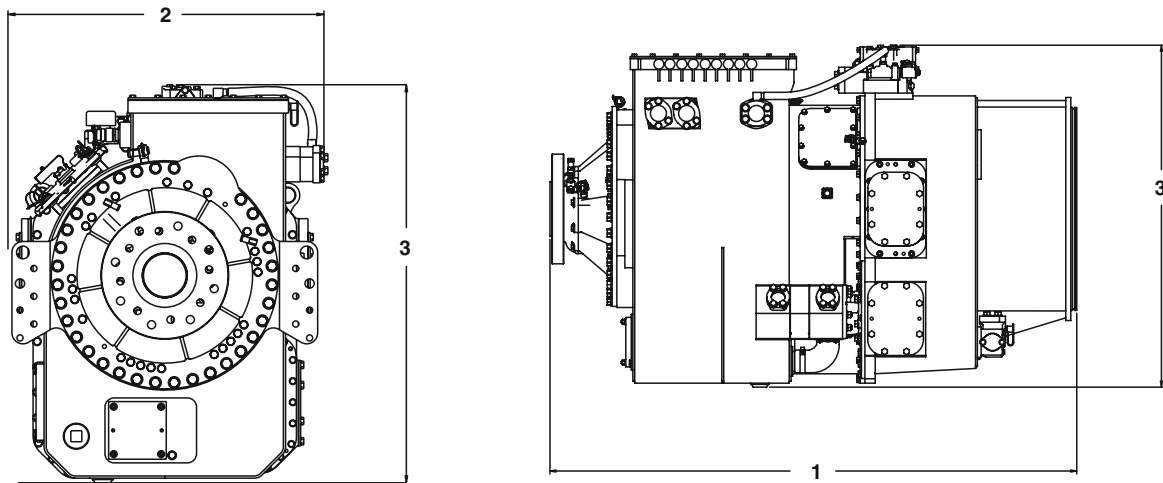
- Series
 - 1200 hp — TC58924-ESLF
 - 1500 hp — TC58927-ESLF
- Stall torque ratio
 - 1200 hp — 2.27
 - 1500 hp — 2.20

CLUTCHES

- Clutches — electro-hydraulic fully modulated, oil cooled, multidisc
- Clutch modulation control — Cat Electronic Clutch Pressure Control (ECPC)

INSTALLATION CONNECTIONS

- 1 cooler
- 1 pump
- 1 electrical

DIMENSIONS


Transmission Dimensions	
(1) Overall Length	1681 mm (66 in)
(2) Width	866 mm (34 in)
(3) Height	1092 mm (43 in)
Weight, dry (approx)	1694 kg (3735 lb)

OIL SYSTEM

Cat Transmission/Drive Train Oil-4 (TDTO)
or equivalent
Oil temperatures
Continuous — 90°C (195°F)
Maximum operating — 99°C (210°F)
Hydraulic fill capacity — approx. 114 L (30 gal)
subject to cooler size, lines, and installation —
initial fill may be greater
Filter type — 6 micron synthetic, cartridge
remote mount

MOUNTINGS

Structural application subject to Caterpillar
approval
Input connection (flywheel) — SAE #0
Output connection (yoke) — GWB 390.60/
GWB 390.65

POWER TAKE-OFF (PUMP AUXILIARY DRIVE)

Drive — engine-driven
Location — 3 positions (3 o'clock, 5 o'clock, and
9 o'clock from rear)
Rated power — 112 kW/150 hp continuous
Mountings — SAE 8 bolt (J704)
Pump drive subject to 20 hp @ 1900 rpm limitation
until device is approved by Caterpillar

Materials and specifications are subject to change without notice. The International System of Units (SI) is used in this publication. CAT, CATERPILLAR, their respective logos, ACERT, "Caterpillar Yellow" and the "Power Edge" trade dress, as well as corporate and product identity used herein, are trademarks of Caterpillar and may not be used without permission.