

Uninterruptible Power Supply (UPS)



Image shown may not reflect actual product.

Cat[®] UPSB 1100

On-Line Double Conversion UPS

555 kVA – 1100 kVA

(500 kW – 990 kW)

60 Hz 480 Volt 3-phase

Caterpillar is leading the power generation marketplace with Power Solutions engineered to deliver unmatched flexibility, expandability, reliability, and cost effectiveness.

FEATURES

PRODUCT FEATURES

- Double conversion topology
- Superior step load response
- Power factor corrected input
- Transient protection
- High-speed voltage regulation
- Top cable entry
- Low input current distortion
- Simple installation
- Low maintenance
- Parallel capable

RELIABLE POWER PROTECTION FOR CRITICAL APPLICATIONS

Cat double conversion battery UPS systems provide clean, stable power to sensitive loads, ensuring critical power protection, optimum performance, and extended life of the protected equipment.

SUPERIOR DESIGN

Superior system design and the use of robust digital components throughout the system yield a reliable and trouble-free UPS system.

HIGH AVAILABILITY

The Cat[®] UPSB 1100 has multiple modes of operation and has been designed for continuous operation. It is fault tolerant with a built in 100% rated static bypass switch.

FLEXIBLE AND UPGRADEABLE

The UPS has an intuitive man/machine interface with a large high definition LCD display, touch sensitive screen, and animated mimic display. The user interface is web and network friendly allowing the UPS to be remotely monitored and integrated into a SCADA system.

WORLDWIDE PRODUCT SUPPORT

Cat dealers provide extensive post sale support including maintenance and repair agreements. Factory qualified technicians are trained to support every aspect of your Cat UPS system.

FACTORY INSTALLED STANDARD & OPTIONAL EQUIPMENT

STANDARD EQUIPMENT

- Front Panel Display
 - 12" high contrast touch screen display
 - LED mimic diagram
 - Event logging with date-time stamping of events
 - Audible alarms
- Integrated input isolation transformer provides galvanic isolation between the incoming source and the critical load
- 12 pulse input rectifier reduces reflected harmonics to utility and generator set sources.
- Integrated paralleling capability for 3+1 systems
- Emergency Power Off (EPO) button used to disconnect the load during emergency situations. It is located on the front panel of the UPS.
- Front access for all connections eliminates the requirement for side and rear access to the UPS, minimizing the installation space needed.

OPTIONAL EQUIPMENT

- Remote Alarm Status panel (RASP) allows UPS status (on-line, battery, bypass, or maintenance bypass) low battery condition, charger status, and the inverter fault to be monitored from a remote location. RASP also contains a UPS Test/Reset and an Audio Reset pushbutton.
- Remote Alarm Summary Panel allows remote viewing of the UPS summary and UPS on battery indications. It also contains a UPS Test/Reset as well as an Audio Reset pushbutton.
- RS-232/RS-485 communications port to allow the UPS module or Static Switch Cabinet (SSC) to be monitored from a remote terminal or computer.
- Remote Emergency Power Off used to disconnect the load during emergency situations. It is located in the same room as the UPS.

Uninterruptible Power Supply (UPS)



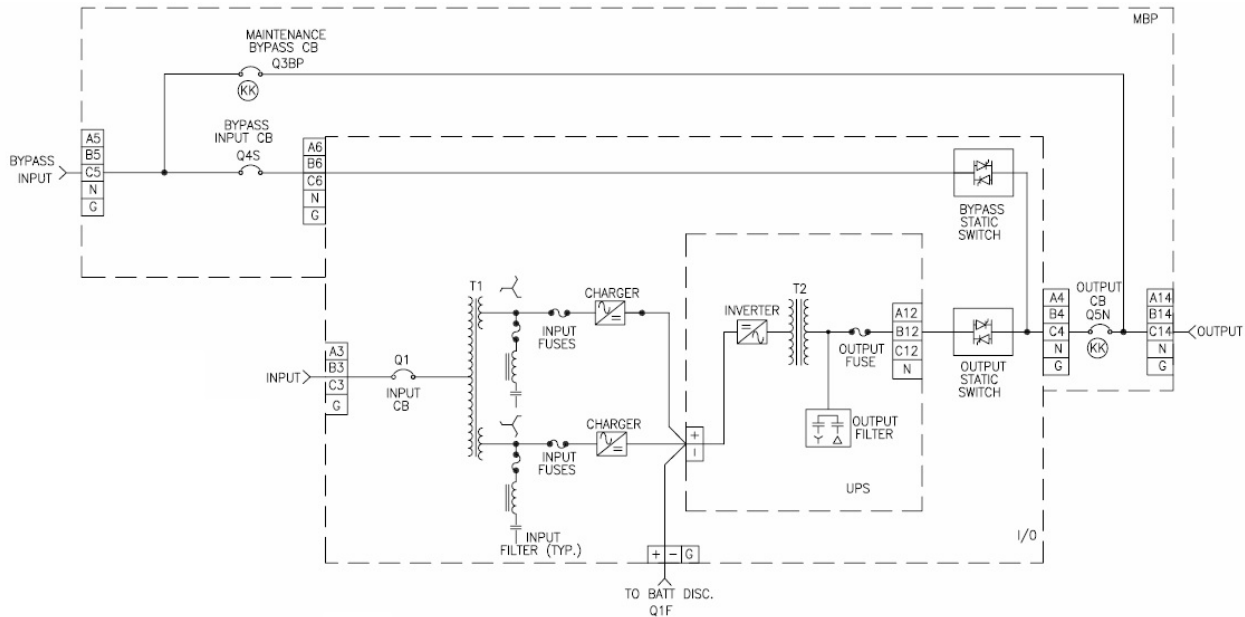
TECHNICAL DATA

Rated Power kVA (kW)	555 (500)	625 (562)	750 (675)	800 (720)	1000 (900)	1100 (990)
Normal AC input						
Input Voltage	480 VAC (3 phase, 3/4 W + GND)					
Frequency	60 Hz \pm 10%					
Power Factor	0.89	0.89	0.86	0.87	0.88	0.88
Nominal input current (A)	719	817	1034	1103	1338	1472
Maximum input current (A)	822	920	1141	1236	1502	1636
Current Distortion (THDI)	< 5%					
Bypass AC input						
Input Voltage	\pm 10% UPS output (3 phase, 3/4 W + GND)					
Frequency	60 Hz (+ 0.25 Hz up to 2 Hz)					
Nominal Current Input (at 480VAC)	668	752	900	960	1203	1323
Output						
Output Voltage	480 VAC 3-phase					
Frequency	60 Hz \pm 0.1 % (Selectable + 5%)					
Power Factor	0.9					
Max Output Current (A)	668	752	900	960	1203	1323
Voltage Regulation	\pm 0.5% (+2.5% step load)					
Voltage Distortion (THD)	<2% L- L and L-N for linear loads					
Overload	150% for 60 sec, 125% for 10 min					
Overall Efficiency						
System efficiency (50% load)	93.0%	93.5%	94.0%	94.0%	92.2%	92.2%
System efficiency (75% load)	93.2%	93.3%	94.2%	94.0%	92.1%	92.0%
System efficiency (100% load)	93.1%	93.0%	94.0%	93.9%	91.4%	91.0%
Environmental						
Storage temperature	-20°C to +45°C (-4°F to 113°F)					
Storage Relative Humidity	0-95% non-condensing					
Storage Elevation	0-9144m (0-30000 feet)					
Operating Temperature	0-40°C (32°F - 104°F)					
Recommended Operating Temperature	0-40°C (32°F - 104°F)					
Operating Altitude	914.4m (3000 feet)					
Operating Humidity	0-95% non-condensing					
Heat Rejection(kW)	36.9	42.8	42.2	46.8	82.6	99.3
(BTU/Hr)	125970	145910	144000	160000	282000	339000
Audible Noise at 100% load	74 dBA @ 5 ft	74 dBA @ 5 ft	78 dBA @ 5 ft	78 dBA @ 5 ft	73 dBA @ 6 ft	73 dBA @ 6 ft
Standards and Approvals						
Approvals	cUL Listed, UL 1778					
Dimensions and Weights (Single Module Systems)						
Physical Depth	991 mm (39 in)		991 mm (39 in)		1139 mm (45 in)	
Physical Height	2083 mm (82 in)		2083 mm (82 in)		2290 mm (90 in)	
Physical Width (without battery)	3100 mm (122 in)		3442 mm (136 in)		3595 mm (142 in)	
Physical Weight	5534 kg (12200 lbs)		6532 kg (14400 lbs)		7725 kg (17031 lbs)	
Shipping Depth	1092 mm (43 in)		1092 mm (43 in)		1219 mm (48 in)	
Shipping Height	2337 mm (92 in)		2337 mm (92 in)		2388 mm (94 in)	
Shipping Width (without battery)	2261 mm (89 in)		2261 mm (89 in)		3658 mm (144 in)	
Shipping Weight	5670 kg (12500 lbs)		6623 kg (14600 mm)		8087 kg (17827 lbs)	

Uninterruptible Power Supply (UPS)



UPS 1000-1100 kVA Single Module One Line



Materials and specifications are subject to change without notice.

CAT, CATERPILLAR, their respective logos, "Caterpillar Yellow," the "Power Edge" trade dress as well as corporate and product identity used herein, are trademarks of Caterpillar and may not be used without permission.

www.Cat-ElectricPower.com