

STRENGTH UNDER FIRE

Cat® Fire Pump Engines



FIRE PUMP POWER

Cat® engines provide power that meets your specific fire water pump applications. From industrial fire sprinkler systems to petrochemical plants and offshore drilling and production vessels, ratings are available for a wide range of requirements such as NFPA 20, MCS approval, emission standards, and hazardous location conditions. The global network of Cat dealers brings comprehensive technical support, installation guidance, and engineered custom solutions for your operation.

CAT FIRE PUMP ENGINE RATINGS

Engine Model	Exhaust Manifold	1460 rpm bkW (bhp)	1500 rpm bkW (bhp)	1600 rpm bkW (bhp)	1750 rpm bkW (bhp)	1800 rpm bkW (bhp)	1900 rpm bkW (bhp)	2000 rpm bkW (bhp)	2100 rpm bkW (bhp)	2200 rpm bkW (bhp)
3406	Wet				218 (292) 313 (420)				321 (430)	
	Dry				276 (370) 343 (460)				359 (482)	
3412	Wet				476 (638)		551 (739)		551 (739)	
C18 ACERT™	Dry		522 (700)		448 (600) 522 (700)		448 (600) 522 (700)		448 (600) 522 (700)	
					597 (800)		597 (800)		597 (800)	
	Wet					465 (624)				
C7 ACERT	Wet									172 (230) 205 (275)
C9 ACERT	Wet					269 (361)				242 (325) 254 (340)
C15 ACERT	Wet					400 (536)	400 (536)	400 (536)		
C32 ACERT	Wet					683 (916) 970 (1300)				642 (860) 686 (920) 828 (1100)
				746 (1000)	746 (1000)	746 (1000)				
3508	Wet	709 (950)			795 (1065)		746 (1000)			
3512	Wet	1066 (1430)			1195 (1600)					
						1118 (1500)				
3516	Wet	1417 (1900)			1480 (1985)					
	Dry					1491 (2000) 1491 (2000)				
3512C (HD)	Dry					1821 (2442) 1678 (2250) 1765 (2365)				
						1921 (2576) 2350 (3151)				
3516C (HD)	Dry									

Note: Additional components may be required to meet NFPA 20 intent requirements. Contact your local Cat dealer for technical support.

¹ Meets NFPA 20 intent requirements prior to 2013. Does not include dual ECU.

² Engine rating does not include 10% overload – pump must be sized 10% below rated power to meet NFPA 20 requirements.

³ Factory-certified for hazardous locations. Hazardous location compliance for other ratings may be possible; contact your local Cat dealer or authorized Pyroban representative.

Cat fire pump engines cover power and speeds from 170 to 1900 bkW (230 to 2,500 bhp). Every unit is tested to meet certified rating standards and for trouble-free startup.

- **Quick starting:** Cat direct injection fuel systems deliver fuel at high injection pressures, at the proper time and in the proper quantities, to provide quick starting and fast acceleration.
- **Simplified installation:** All Cat fire pump engines come equipped with a jacket water heater that has dual voltage capabilities – 120-240 or 240-480.
- **Certifications:** Cat fire pump engines include the necessary components to meet various certifications, such as UL, FM, NFPA 20, marine classification society, and hazardous location.
- **Lifetime peace of mind:** Low-cost maintenance plans from Cat dealers are tailored to match each customer’s specific operation requirements to keep their engines up and running.



2300 rpm bkW (bhp)	Emissions Compliance	UL Listed FM Approved	NFPA-20 Compliant	NFPA-20 Intent	MCS Approved	Hazardous Location Certified ³
	NC	X	X			
339 (455)	NC	X	X			
	NC	X	X			
	NC	X	X			
	T3	X	X			
	T2	X	X			
	T3			X ¹	X	
				X ^{1,2}	X	X
	IMO II			X ¹	X	
	IMO II			X ^{1,2}		
	IMO II			X ^{1,2}		X
	IMO II			X ^{1,2}		X
	IMO II			X ^{1,2}	X	
	IMO II			X ^{1,2}	X	
	IMO II			X ^{1,2}		X
	IMO II			X ^{1,2}	X	
	NC			X		
	NC			X ²	X	
	NC			X		
	NC			X ²	X	
	NC			X		
	NC			X ²	X	
	NC					
	IMO II			X ¹	X	
	IMO II			X ²	X	
	IMO II			X ¹	X	
	IMO II			X ²	X	

Legend:

NC = non-certified
IMO II = IMO Tier II

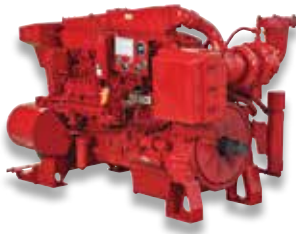
T2 = U.S. EPA non-road emergency stationary Tier 2
T3 = U.S. EPA non-road emergency stationary Tier 3

STANDARD/ OPTIONAL EQUIPMENT

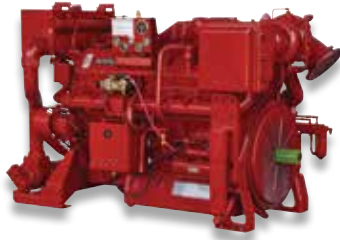
With a Cat fire pump engine, dependable starts and a long, durable life are standard.

- Dual engine control unit (ECU)*
- Charging alternator
- Engine monitoring and protection system
- Jacket water heater
- Heat exchanger
- Expansion tank
- SAE flywheel
- Stop-start system, automatic
- 24V electric starting motor
- Primary filter/water separator
- Oil cooler
- Oil filter
- Battery

* Select models



3406C



3412



C18 ACERT™



3508

The Power of Teamwork

Get the best fire pump engine for the best value. We'll work with you to make sure you have the power and performance you need plus Cat dealer experts ready with support and service whenever you need them. To learn more, contact your local Cat dealer or visit www.catoilandgasinfo.com or www.cat-industrial.com.

BUILT FOR IT.™

Caterpillar Global Petroleum

AMERICAS

Caterpillar Inc.
Global Petroleum
13105 N.W. Freeway
Suite 1100
Houston, Texas 77040-6321
Tel: (+1) 713-329-2207
Fax: (+1) 713-895-4280

RUSSIA

Caterpillar Eurasia
82 Sadovnicheskaya Str.
Moscow 115035
Tel: (+7-495) 213-3340
Fax: (+7-495) 213-3372

ASIA PACIFIC

Caterpillar Asia Pte., Ltd.
Global Petroleum
7 Tractor Road
Singapore 627968
Tel: (+65) 6828-7333
Fax: (+65) 6828-7414

CHINA

Caterpillar Global Petroleum China
Room 1601 Caterpillar Tower
No. 8 Wangjing Street
Beijing 100102, P.R. China
Tel: (+86-10) 5921-0521
Fax: (+86-10) 5921-0022

EUROPE, AFRICA, AND MIDDLE EAST

Caterpillar Commercial Northern Europe Ltd.
Global Petroleum
OTV House
Wokingham Road, Rounds Hill
Bracknell, Berkshire
United Kingdom
RG42 1NG
Tel: (+44) 1344 782 920
Mobile: (+44) 7717411938
Fax: (+44) 1344 782 930

Caterpillar Motoren GmbH & Co. KG
Global Petroleum
Falckensteiner Str. 2
D-24159 Kiel, Germany
Tel: (+49) 431 3995 3004
Fax: (+49) 431 3995 5004

