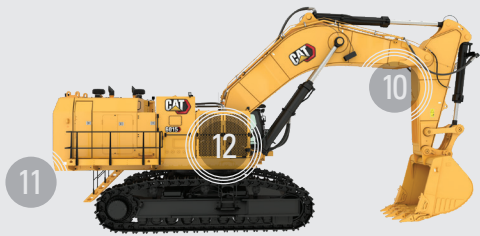


THE CAT® 6015 HYDRAULIC MINING SHOVEL

MORE TIME TO LOAD MORE.



1. Robust carbody and crawler frames with Cat® HD undercarriage, HD rollers, HD idlers, HD track, and track tensioning
2. Strengthened and heavy-duty final drive, with improved serviceability (retrofitable)
3. New HD undercarriage protection package (retrofitable)
4. Durable boom with energy efficient boom lowering float valves
5. New bucket linkage design prevents travel over center and improves kinematic balance
6. Productive and durable buckets equipped with a wear protection package of choice
7. Safe access and egress with powered 45° access stairway insert (optional)
8. New engine module with Cat C27 engine and non-DEF aftertreatment solution, enhanced hydraulics, and hose routing (meets U.S. EPA Tier 4 Final / EU Stage V emissions)
9. Comfortable and productive operator's cab with large, color touchscreen and HVAC
10. LED high-brightness working and service lights
11. Easily accessible ground level service station
12. Oil cooler module with fully independent oil cooling system
13. Connects to Cat MineStar™ Solutions with new Product Link™ Elite
14. Optional Camera Monitoring System or Vision 360 retrofit kit increase situational awareness and reduce operator fatigue



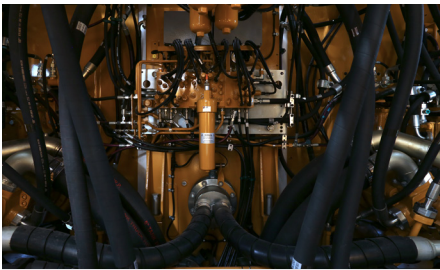
THE CAT® 6015 HYDRAULIC MINING SHOVEL



824 hp / 615 kW
ENGINE OUTPUT

BACKHOE: 16.1 t / 14.6 mt
BUCKET PAYLOAD

BACKHOE: 154 t / 140 mt
OPERATING WEIGHT



ENGINES

- » Boost productivity with a durable and reliable C27 engine, certified to meet U.S. EPA Tier 4 Final and EU Stage V.
- » Keep engine and pumps running at optimum speeds with Load Enhanced Anticipatory Control (LEAC).

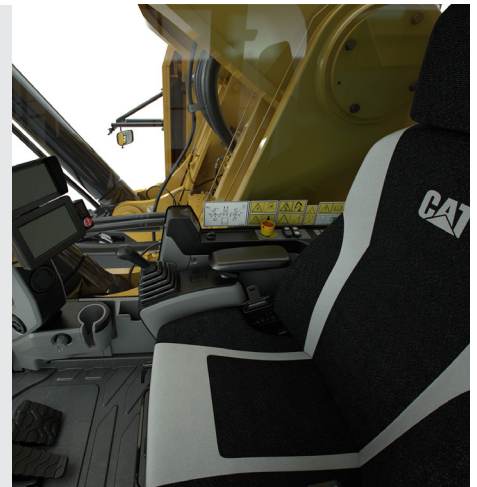


SAFETY

- » Improve operator protection with protective guards on the top of the cab and the optional front guard.
- » Anti-slip walkways and optional 45-degree stairway allow for safe access and egress.
- » Safety glass in all windows protects operator.
- » Five emergency shut-off switches, with one easily accessible in the cab to shut down the electrical system in case of emergencies.
- » Support sustainable development goals with optional Cat Bio Hydro Advanced hydraulic fluid.

CAB

- » Excellent visibility with unobstructed view of digging environment and upward view through skylight.
- » Comfortable and productive operator environment with heated, pneumatically-cushioned and multi-adjustable comfort seat.
- » Independently adjustable joystick consoles.
- » Joystick controls alternative pattern as standard.
- » Pressurized cab with positive filtration.
- » Optional Camera Monitoring System or Vision 360 Retrofit Kit.
- » Superior insulation for reduced noise and temperature control.



SERVICEABILITY

- » Diagnose and execute maintenance more effectively with Cat Electronic Technician (ET).
- » Inspect, maintain, and repair the 6015 more easily with improved service documentation, new visual inspection ports and commonization of accumulator charging ports and tools.
- » Reduce downtime with enhanced warning levels for hydraulic oil temperature and improved data link diagnostics including new pilot pressure monitoring via ET.
- » Ground level service station provides easy access to fast-fill diesel fuel and grease connections.
- » HRC engines eliminate the need for DEF, saving time and cost during maintenance.
- » Enable collection and transmission of machine data with and the new Product Link Elite technology.
- » Experience maintenance free Positive Pin Retention tracks that are specially machined to extend internal pin/bushing wear life and fatigue resistance.

RECENT ENHANCEMENTS

In 2023, we introduced several updates to the 6015 to make it stronger, more efficient and more reliable. These enhancements were based directly on feedback from customers.

- » Larger, heavier hydraulic tank
- » New hydraulic oil cooler enclosure, fan, fan motor and harness
- » Second cooling core

We also rerouted tubes and hoses for safer, simpler assembly and maintenance. In addition, we've made a number of changes to the hydraulic system to improve performance and reliability. We've also strengthened the engine enclosure, main control valve mounting bracket and main frame to increase the durability of the machine.

