

Cat® Cutting Edge Systems

WHEEL LOADERS

950, 962, 966, 972, 980, 982



**THERE'S WORK TO BE DONE.
LET US HELP YOU DO IT.**



EXCELLENT VALUE AND COST PER HOUR FOR YOUR CAT EQUIPMENT

Cat® wheel loader cutting edges and end bits are designed to create a balance with your machine – and your conditions. All Cat cutting edge systems help you lower your cost per hour, decrease downtime and move more material. Choose the options you need to match your application and get the results you want.

CATERPILLAR WARRANTY

Cat end bits and cutting edge systems come with our Caterpillar Limited Warranty which covers damaged Cat parts in the event of an applicable failure.*

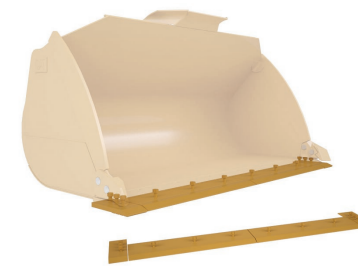
Features	Benefits
Through-hardened DH-2 steels with Abrasion Resistant Material (ARM) options	Enhanced strength, wear life and breakage resistance
Various thickness options	Match customer price and wear life expectations
Deep countersinks	Long-lasting bolt protection, ensuring a tight fit
Edges in sections	Easy handling, storage, installation and turning
Thicker end bits	For improved corner wear

*Warranty can vary by model and applications; limitations may apply. For complete details about the applicable Caterpillar Limited Warranty, contact an authorized Cat dealer.

BOLT-ON CUTTING EDGES FOR THE TOUGHEST ENVIRONMENTS

Find the best solution for your bucket and application with our broad portfolio of edge solutions. Cat bolt-on cutting edge options are available in standard through heavy-duty thicknesses, Cat Abrasion Resistant Material (A.R.M.) and half arrow options. Top covers are also available for optimal use with half arrows. These parts are designed to increase your machine's productivity by reducing operating and maintenance interval costs.

For Low-to-Medium Impact, Low-Abrasion Materials:



Standard Bolt-on Cutting Edge

- Reversible
- Through-hardened DH-2
- Thinner for reduced price in low abrasion applications

For Medium-Impact and Abrasion Materials:



Heavy-duty Bolt-on Cutting Edge

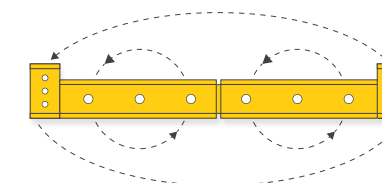
- Through-hardened DH-2
- Thicker cutting edge for added wear life

For High-Abrasion, Low-Impact Materials:

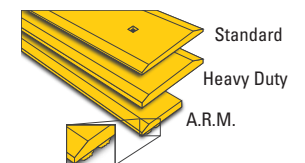


Abrasion Resistant Bolt-on Cutting Edge

- Lighter weight than heavy-duty edge
- Up to five times the wear life of a standard bolt-on cutting edge
- Recommended for sand, gravel and other abrasive materials



Bolt-on cutting edges are reversible for extended wear life (with the exception of some Abrasion Resistant cutting edges).



SINGLE LIFE CUTTING EDGE

If you are looking for simplified maintenance, our new maintenance-free cutting edge for medium wheel loaders will provide similar life to our standard cutting edge option with increased thickness. This one-way edge is made from through-hardened DH-2 steel and can endure both high impact and abrasion while eliminating the need to monitor wear for flipping your cutting edges.



THICKNESS OPTIONS FOR INCREASED WEAR LIFE

If you're looking for a broad array of thickness options, we've got you covered. Our extensive range allows you to select the best edge for your machine size and application. Keep in mind, our testing shows that the thicker the blade, the longer the wear life.

Medium Wheel Loader Cutting Edge Thickness Options by Machine Size*					
950	962	966	972	980	982
16 mm	19 mm	16 mm	16 mm	25 mm	30 mm
19 mm	25 mm	19 mm	19 mm	30 mm	35 mm
25 mm	30 mm	25 mm	25 mm	35 mm	40 mm
30 mm	35 mm	28 mm	30 mm	40 mm	
35 mm	40 mm	30 mm	35 mm		
40 mm		35 mm	40 mm		
		40 mm			

*Omits Half Arrow & Rubber Cutting Edge. In addition, buckets do not have all thickness options. Available options rely on length and bolt pattern.

ENHANCEMENTS TO PROTECT YOUR MACHINE

High-abrasion, high-impact environments demand highly durable machinery. In these settings, consider our Half-Arrow Bolt-on Cutting Edge and Top Cover options. By protecting your base edge, you can increase the life of your edge up to five times over unprotected base edges. You can also expect increased bucket capacity over unprotected edges.



WHY CHOOSE CAT CUTTING EDGES?

1 LONGER LIFESPAN

Protected Base Edges have up to five times the lifespan of unprotected base edges.

2 FULL PORTFOLIO OFFERING

Cat offers a range of cutting edge products to meet your application needs. Our capabilities include customizing cutting edge thickness and bolt patterns to fit your buckets through the Made As Ordered process.

3 HIGHER CAPACITY

Protected edges can increase bucket capacity compared to unprotected base edges.

4 BETTER PROTECTION

Cutting edges can be used to ensure a smooth floor, protecting your wheel loader tires from debris.

A SYSTEM THAT MAKES SENSE WITH SUPPORT YOU CAN COUNT ON

Take full advantage of Cat wheel loader edge systems, and equip your machines for improved performance and service life. Your Cat dealer is available with the parts and knowledge to support your specific needs for cutting edges and end bits. Your dealer will:

- + Identify signs of premature wear and suggest corrective action
- + Suggest operating techniques to reduce wear
- + Offer G.E.T. Options such as weld-on half arrows, pin-on side-bar protectors and wear plates
- + Help determine the best combination of components for your application to improve your cost per hour

IT IS EXTREMELY IMPORTANT TO KEEP ALL HARDWARE TIGHT

- Use new bolts and nuts when installing new end bits and cutting edges to ensure against metal fatigue
- Surfaces must be clean of dirt, paint, scale, rust and weld splatter
- Mating surfaces must be clean and flat to assure maximum clamping force
- Bolt and nut threads must be clean; do not apply lubricant to the hardware, as this may over-stretch the bolt
- Cutting edge bolts are installed from the center outward or from one end to the other
- End-bit bolts are installed first from the center outward, then from the center inward
- Tighten all bolts to the required torque
- Seat bolt heads in the countersinks with a heavy hammer
- Tighten the bolts again to required torque

Check your Operation and Maintenance Manual (OMM) for specific information about your machine.



Cat[®] Cutting Edge Systems

WHEEL LOADERS



**CAT DEALERS DEFINE
WORLD-CLASS
PRODUCT SUPPORT.**

We offer you the right parts and service solutions, when and where you need them.

The Cat Dealer network of highly trained experts keeps your entire fleet up and running to help maximize your equipment investment.

PEDJ1442-01
www.cat.com

© 2025 Caterpillar. All Rights Reserved. CAT, CATERPILLAR, LET'S DO THE WORK, their respective logos, "Caterpillar Corporate Yellow", the "Power Edge" and Cat "Modern Hex" trade dress as well as corporate and product identity used herein, are trademarks of Caterpillar and may not be used without permission.

