

SIS2GO

SIS2GO APP QUICK START GUIDE



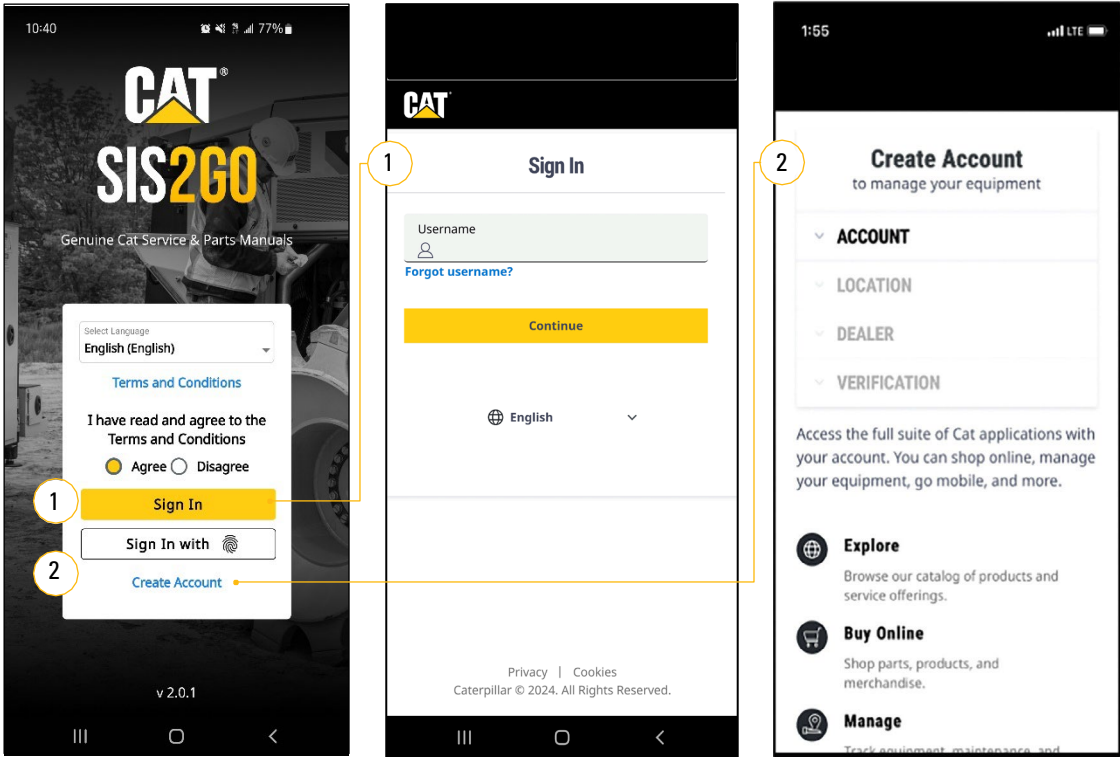
DOWNLOAD THE APP

Now you can take the guesswork out of maintaining, troubleshooting, and repairing your equipment. All while being assured you have the most current and reliable information. Learn more about the Cat® SIS2GO app at cat.com/SIS2GO.



HOW TO SIGN IN

- 1 If you have an existing CWS account*, select **“Sign In”** to enter your username and password.
- 2 If you do not have a CWS account, select **“Create Account”** to create a new account. In this step, provide your contact details, select your local Cat dealer, and create a password.

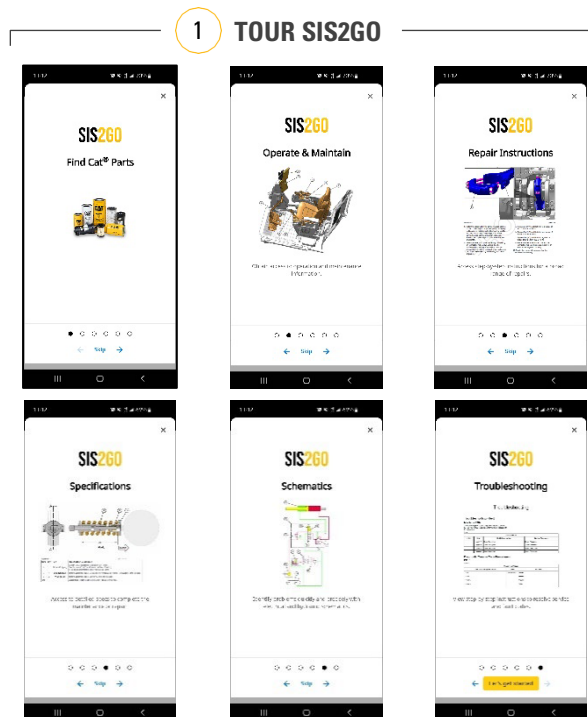
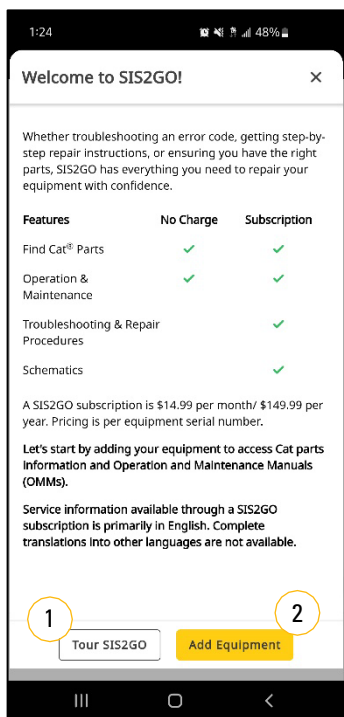


***NOTE:** A CWS account is your Caterpillar username and may be used across other Cat applications.



WELCOME AND TOUR

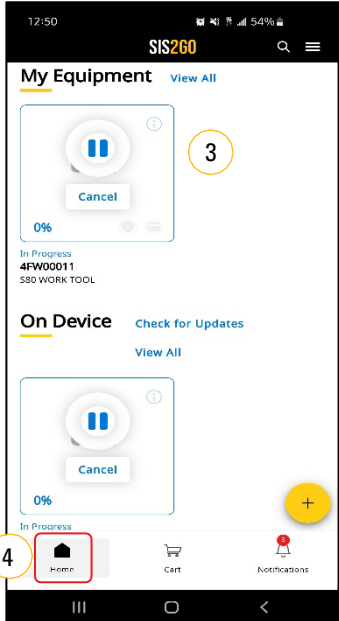
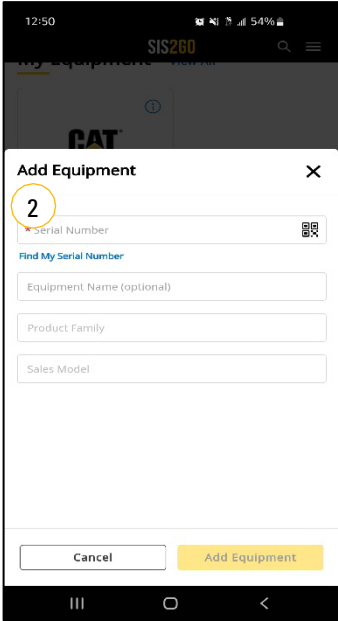
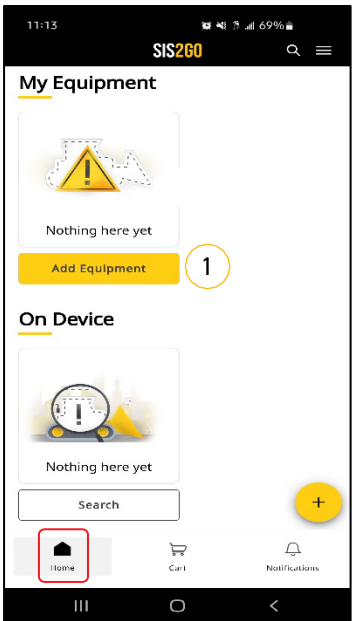
- 1 To learn more about the features, select **“Tour SIS2GO.”**
- 2 Or, if you prefer to get started right away, select **“Add Equipment”** to access Cat Parts and Operation and Maintenance Manual (OMM) information.



NOTE: Within SIS2GO, access to parts and OMM information is available at no charge. Affordable subscription options are offered for access to Cat service manual information.

ADD EQUIPMENT

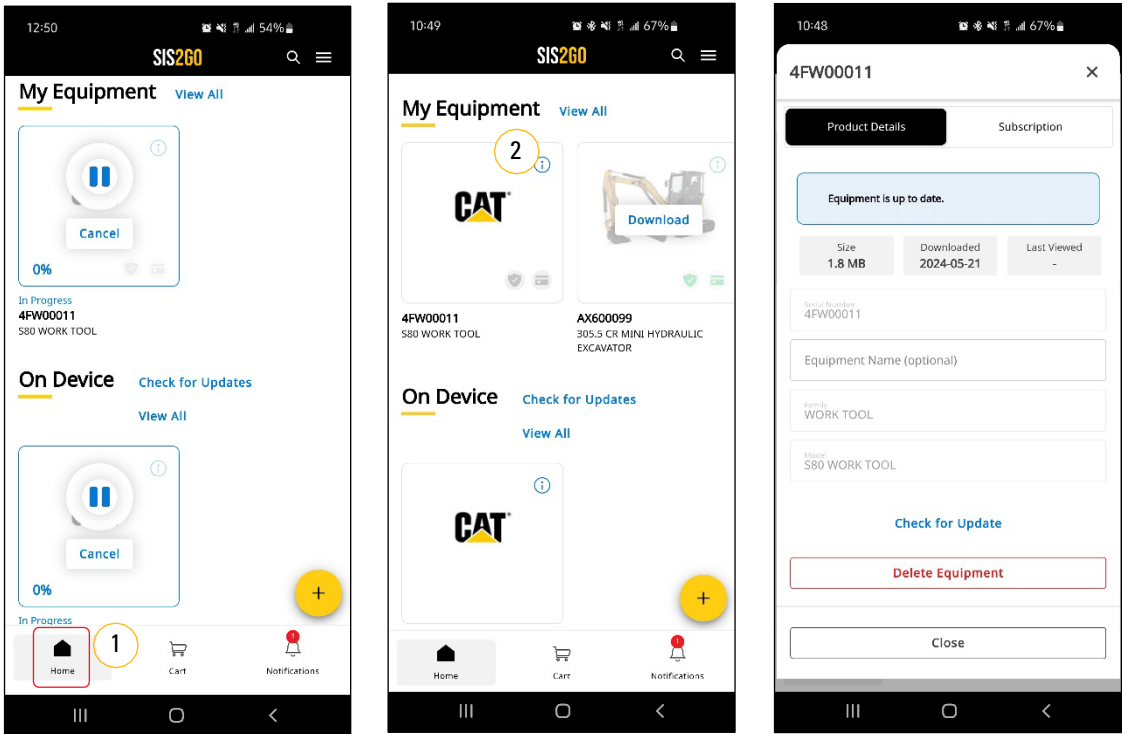
- 1 Select "Add Equipment" to get started.
- 2 Enter your equipment's serial number, equipment name (optional), and then select the "Add Equipment" button. The "Product Family" and "Sales Model" fields will auto-populate.
- 3 Parts and OMM information will automatically start downloading to your device. You will receive a notification when the downloads are ready.
- 4 To check the progress, select the "Home" icon.



DOWNLOADS

- 1 After adding an equipment serial number, you can monitor any download progress by selecting the **“Home”** icon.

- 2 To view information on your download, select the ⓘ icon. This button provides additional options to view in the **“Product Details”** tab.
 - + Select **“Check for Update”** while online for the most up-to-date information.
 - + Select **“Delete Equipment”** to remove the download from your device.
 - + Select **“Close”** to return to your **“Home”** screen.

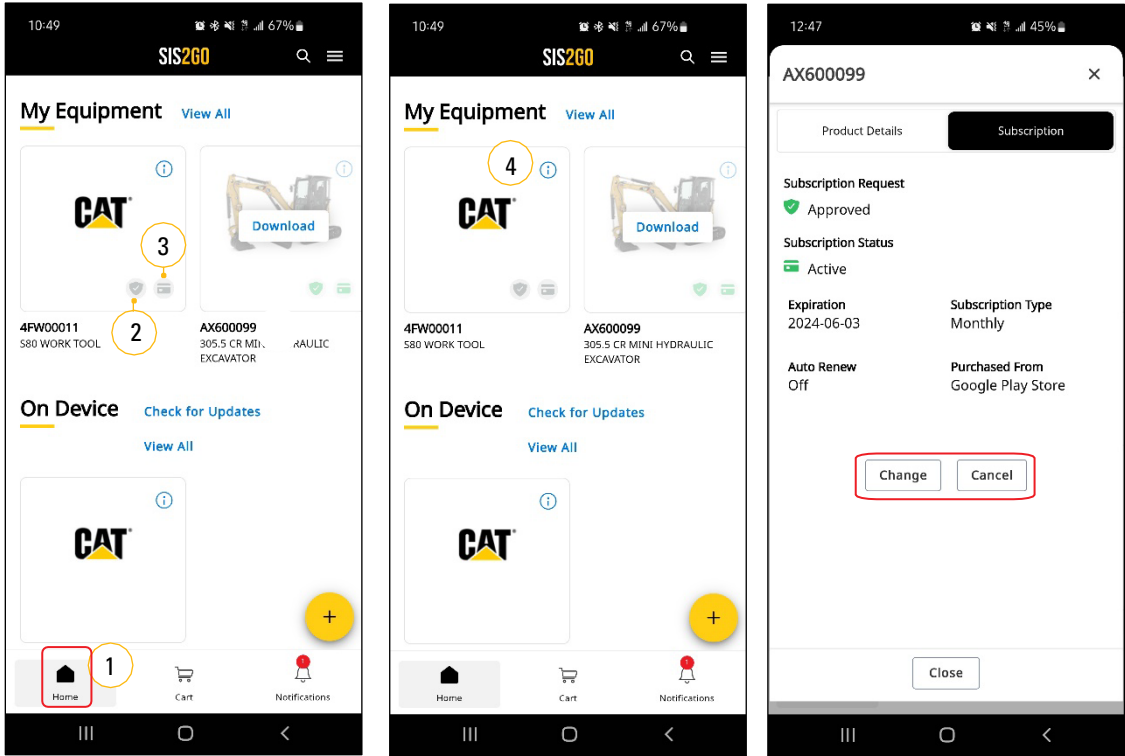


NOTE: The app may be used while the downloads are in progress.



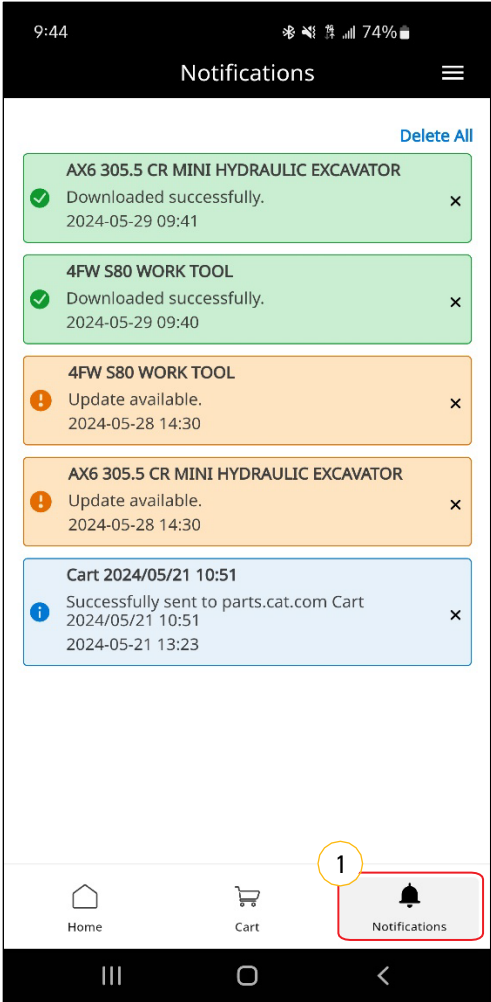
HOME

- 1 Select the **“Home Screen”** icon to view your added equipment, subscription, and payment status.
- 2 The color of the **“Subscription Request”** icon indicates the status of your subscription request.
 - Not Sent
 - Pending Review
 - Approved
- 3 The color of the **“Subscription Status”** icon indicates the status of your subscription payment.
 - Subscription not active
 - Subscription active
- 4 To change or cancel your subscription, select the **i** icon, for these available options.



NOTIFICATIONS

1 Select the **“Notifications”** icon to view messages or alerts. These may include updates such as:

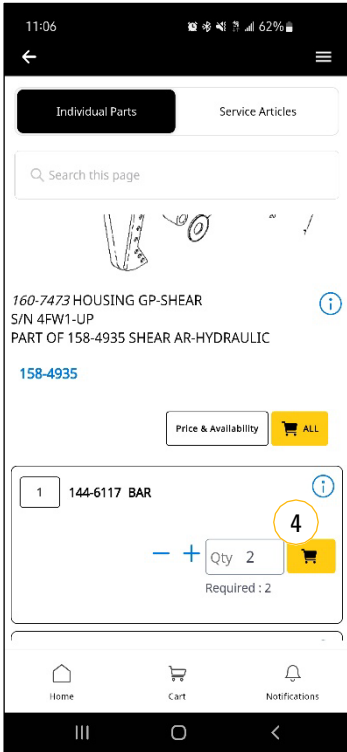
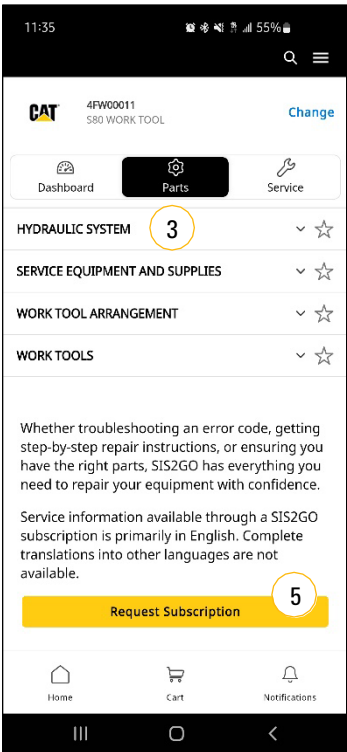
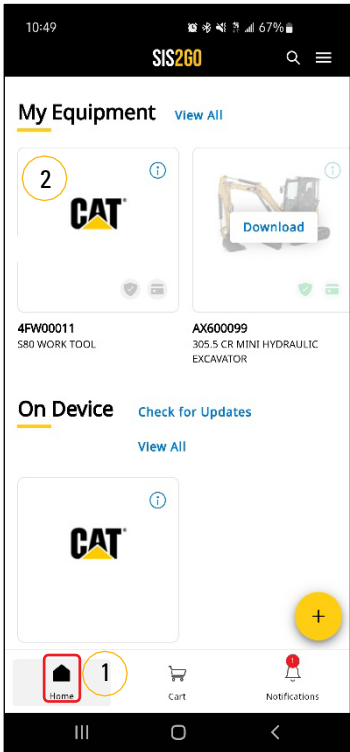


- + **“Downloaded Successfully”**
- + **“Update Available”**
- + **“Successfully Validated”**
- + **“Shopping Cart Changes”**
- + **“Subscription Active”**
- + **“Subscription Expired”**



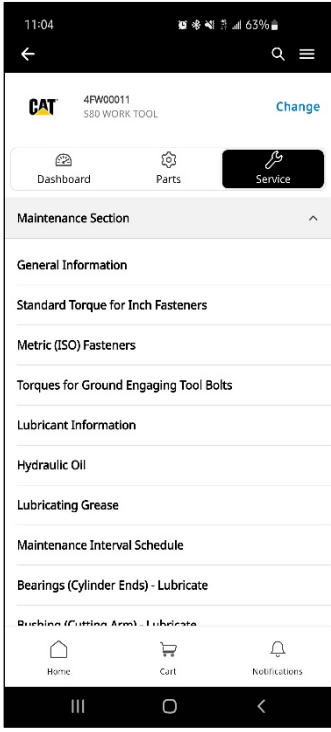
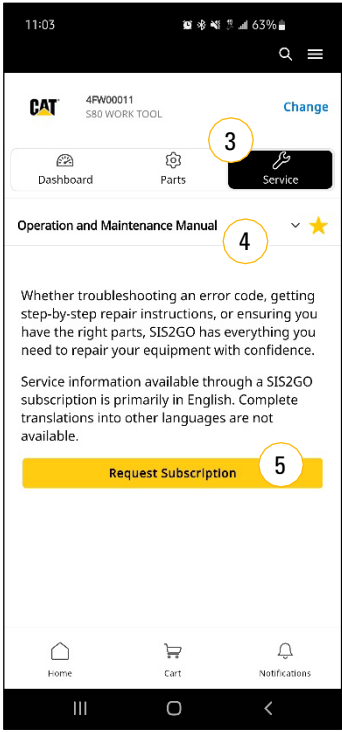
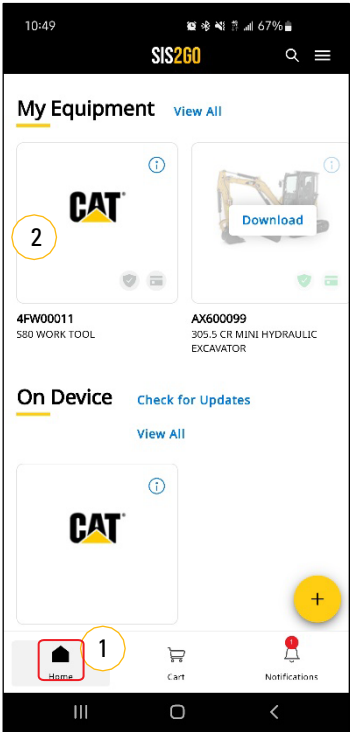
PARTS INFORMATION

- 1 To view parts information, select the "Home" icon.
- 2 Then, select your Cat equipment serial number.
- 3 In the "Parts" tab, the parts information is categorized by systems and components. You can access the component information and breakdown by selecting an available drop-down menu.
- 4 You can also quickly add parts to the shopping cart to purchase directly from your Cat dealer. For assistance, refer to parts.cat.com.
- 5 For access to the Cat service manual information for your equipment, request a SIS2GO subscription within the app.



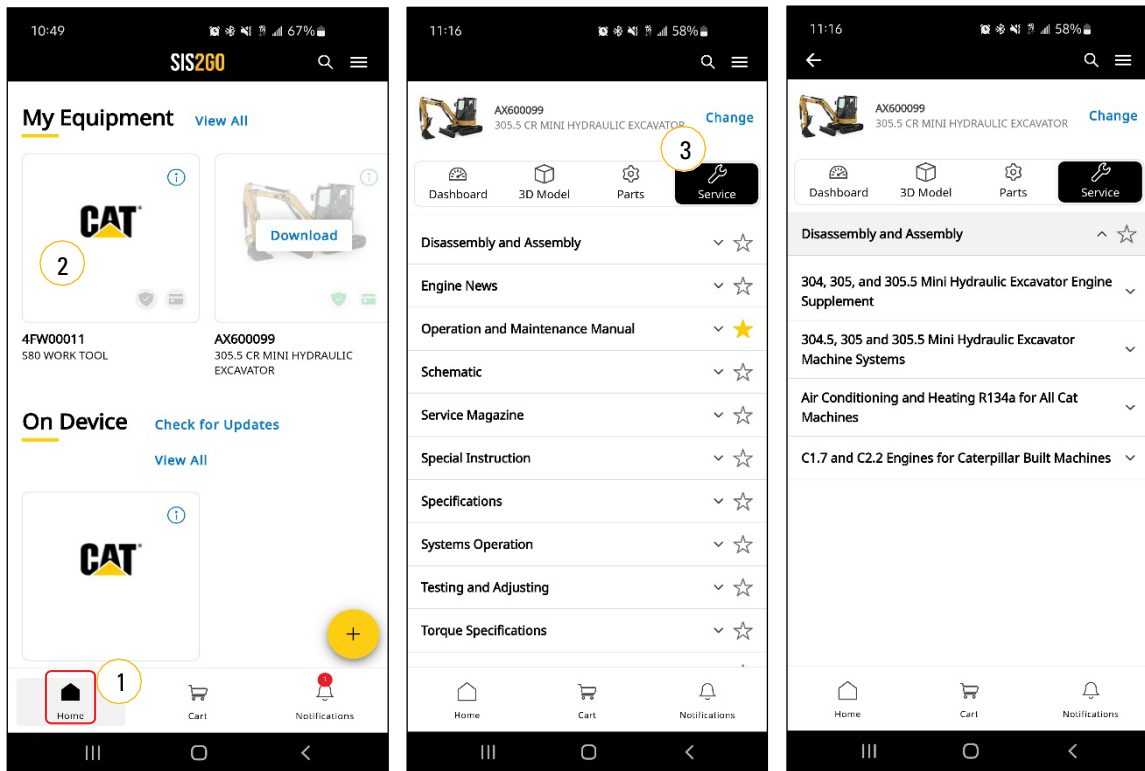
OPERATION AND MAINTENANCE

- 1 To view OMM information, select the **“Home”** icon.
- 2 Then, select your Cat equipment serial number.
- 3 Select the **“Service”** tab to access the OMM information for your selected serial number.
- 4 Then, select the **“Operation and Maintenance Manual”** drop down menu.
- 5 For access to the Cat service manual information for your equipment, request a SIS2GO subscription within the app.



SERVICE INFORMATION

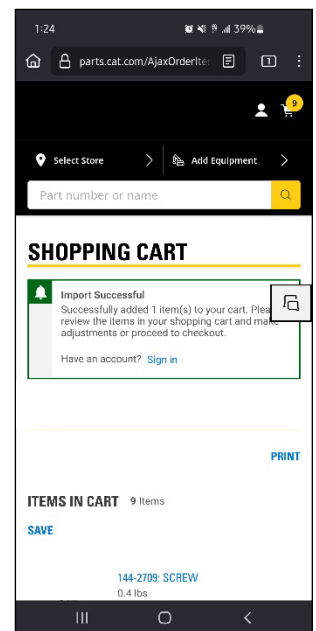
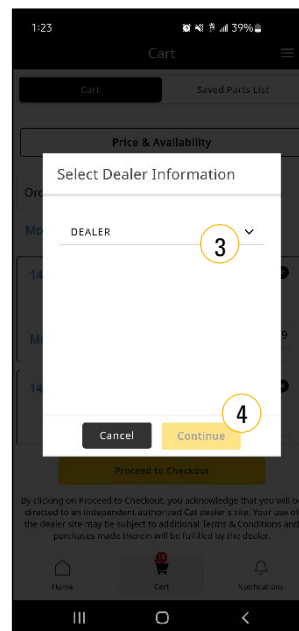
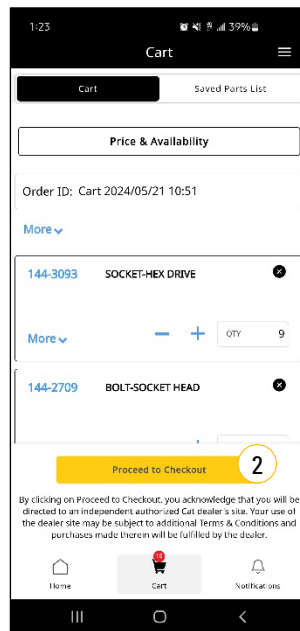
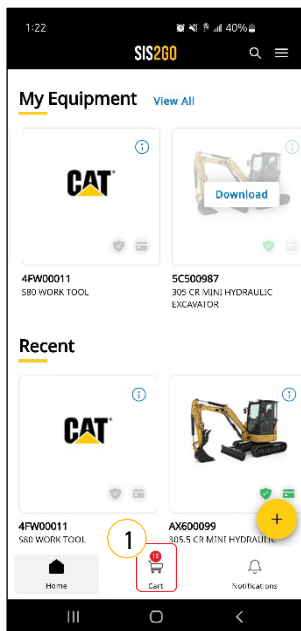
- 1 To access service information, select the **"Home"** icon.
- 2 Then, select your Cat equipment serial number.
- 3 Select **"Service"** tab to access service information for your selected serial number.



NOTE: For access to the Cat service manual information for your equipment, request a SIS2GO subscription within the app.

HOW TO ORDER PARTS FROM YOUR CAT DEALER

- 1 To order parts, select the **“Cart”** icon.
- 2 After reviewing the items in your cart, select **“Proceed to Checkout.”**
- 3 Select your local dealer to send your cart to their store on **“Parts.cat.com.”**
- 4 Select **“Continue”** to be directed to **“Parts.cat.com”** to purchase parts from your Cat dealer.



APP SUPPORT

- + To learn more, reference the documentation in the **"Help Menu"** or visit cat.com/SIS2GO.
- + If you have questions about SIS2GO, contact your local Cat dealer.
- + For SIS2GO billing or subscription questions, please contact app stores.
- + If you are experiencing technical issues with the app, please report them to SIS2GO_help@cat.com.

