

2021E

Wheel Loader

HINDUSTAN



IMPROVED
OPERATOR ENVIRONMENT



HIGHLY RELIABLE & FUEL
EFFICIENT BS IV ENGINE

Bestseller
Got
Cleaner

BS IV
EMISSION COMPLIANT



HIGHER PRODUCTIVITY WITH
BEST LIFT HEIGHT



LOWEST OWNING &
OPERATING COST

2021E

Engine Model*	ASHOK LEYLAND, H6C413323
Rated power (gross)	98 kW (133hp) @ 2300 RPM
Bucket Capacity	1.53 - 3.0 m ³
Payload	3,210 kg
Operating Weight	11,700 kg

*Engine meets BHARAT STAGE IV (CEV) emission standards

SPECIFICATION

Engine

Make & Model	Ashok Leyland / H6C413323
Type	4 Stroke, 6 Cylinder, Water cooled & turbocharged
Gross Power	98 kW (133 hp) @ 2300 rpm
Max Torque	475 Nm @ 1700 - 1900 rpm

Transmission

Make	Avtec –TT2221-1
Type	Powershift transmission with mechanically actuated hydraulic control
Travelling speed	Forward : 1st Gear 7.0 kmph; 2nd Gear 25.8 kmph Reverse : 1st Gear 9.5 kmph

Drive axles

Type	4 WD with Conventional heavy duty differential with planetary hub reduction
Rear axle oscillation	+/- 11 deg

Tire

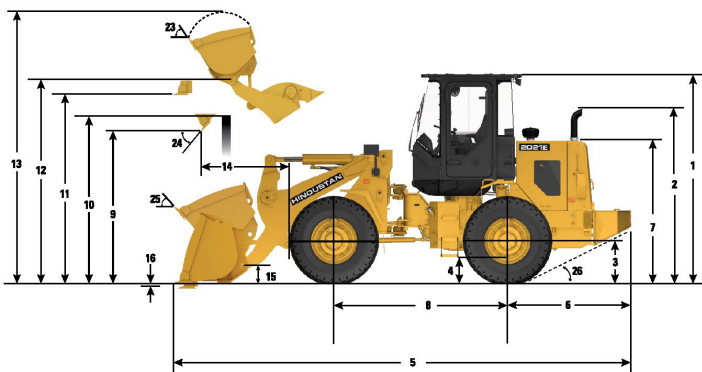
Standard size	14.00 x 25 - 20 PR E3/L3
---------------	--------------------------

Brakes

Service brake	4 Wheel air actuated brakes with separate circuit for front & rear
Parking brake	Mechanically expanding shoe brake mounted at transmission output shaft
Emergency brake	Uses Service brake. Applies automatically under low air pressure and can also be applied manually

Operating Dimensions

1 Height : ground to cab	3207	mm	12 Height : bucket pin	3828	mm
2 Height : ground to exhaust	2470	mm	15 Carry height : bucket pin	460	mm
3 Height : ground to axle center	634	mm	18 Width : tread centre	1976	mm
4 Height : ground clearance	367	mm	20 Width : over tires	2362	mm
6 Length : rear axle to bumper	1907	mm	21 Turning radius : outside of tires	5598	mm
8 Length : wheel base	2658	mm	22 Turning radius: inside of tires	2365	mm
10 Clearance : load over height	3453	mm	23 Rack angle at full lift	58	deg
11 Clearance : level bucket	3553	mm	24 Dump angle at full lift	50	deg
			25 Rack angle at carry	50	deg
			26 Departure angle	27	deg
			27 Articulation angle	40	deg



Hydraulic System

Tandem gear pump, Two spool hydraulic control valve	
Loader control	Single lever, Hydraulic joy stick
Lift arm operation	Raise, hold, lower & float
Bucket operations	Rollback, hold & dump
Loader system pressure	213 bar
Steering system pressure	155 bar

Cabin

Spacious, Ergonomic and comfortable cab with low sound level and all around visibility is the standard features for all machines. HVAC Option available.

Electrical

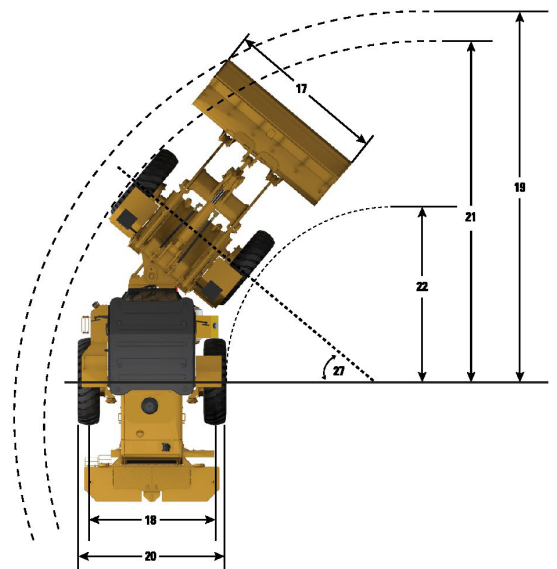
System includes 55A or 85A alternator, 24V with two 12V, 130 ampere-hour batteries.

Service Refill capacities

Fuel Tank	181 L
Diesel Exhaust Fluid (DEF) Tank	24 L
Cooling System	23 L
Engine crankcase	15 L
Transmission	41 L
Front Axle Oil	20 L
Rear Axle Oil	20 L
Hydraulic system (including tank)	127 L

- Dimensions listed are configured with standard and heavy counterweights, 80 kg (176 lb) operator and 14 x 25 tires at a recommended pressure of 3.8 bar (55 psi) in the front tires and 3.1 bar (45 psi) in the rear tires.

Parameters	Unit	Weld on teeth			
		General purpose		Light material	Rock
Bucket size	cum	1.7	2.0	3.0	1.7
5 Length : Over all	mm	7133	7197	7435	7354
9 Clearance : bucket at 45°	mm	2879	2828	2648	2736
13 Height : over all	mm	4893	4915	5209	4848
14 Reach : bucket at 45°	mm	1263	1299	1449	1426
16 Dig depth	mm	77	77	77	82
17 Width: bucket	mm	2550	2700	2800	2550
19 Turning radius, bucket at carry	mm	5623	5708	5821	5687



© 2021 Caterpillar
All rights reserved

Materials and Specifications are subject to change without notice. Featured machines in photos include additional equipment. See your Cat dealer for available options.

CAT, CATERPILLAR, LET'S DO THE WORK, their respective logos, "Caterpillar Corporate Yellow," the "Power Edge" and Cat "Modern Hex" trade dress as well as corporate and product identity used herein, are trademarks of Caterpillar and may not be used without permission.

Dealer info: