

CAT® APP RELEASE NOTES

iOS_2.23 | ANDROID_2.23

February 2021

CAT® APP

24/7 EQUIPMENT MANAGEMENT ON-THE-GO

Efficient equipment management starts with the Cat App. Track the location and health of your equipment, order service and parts, and activate telematics devices directly from your mobile device. Staying on top of your fleet 24/7 has never been easier.

WHAT'S NEW

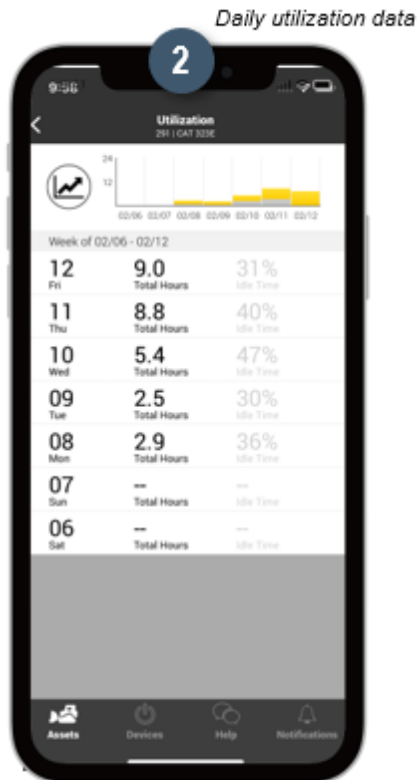
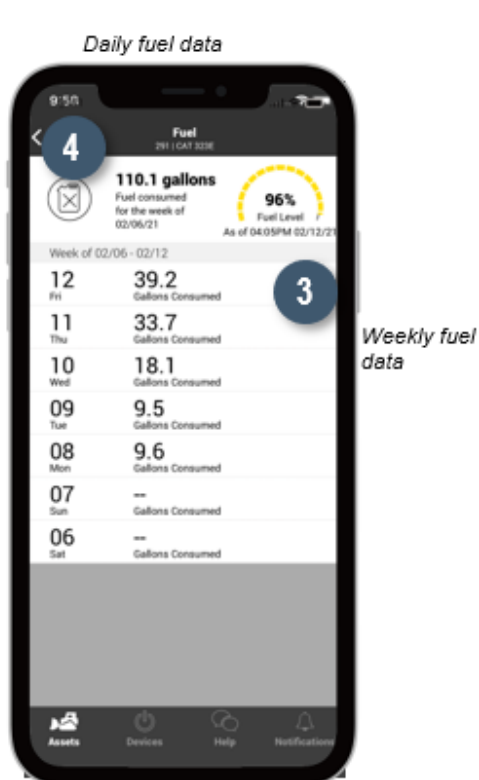
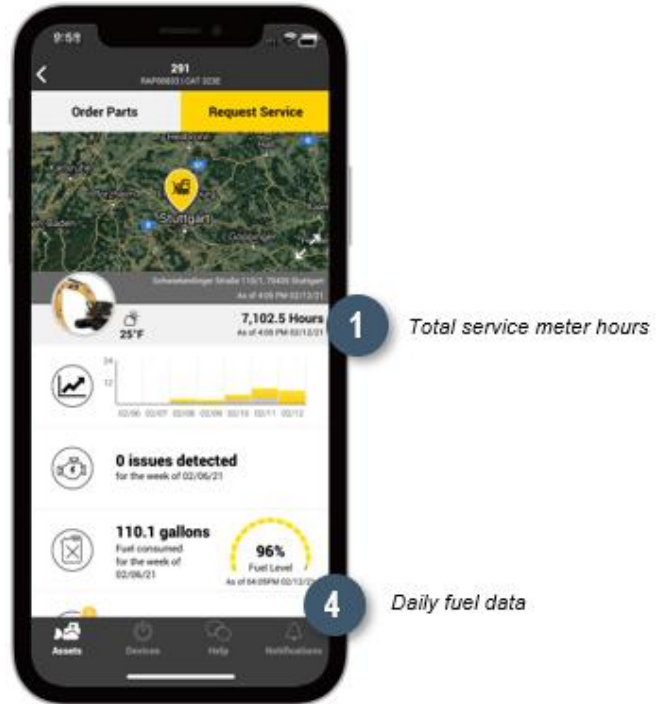
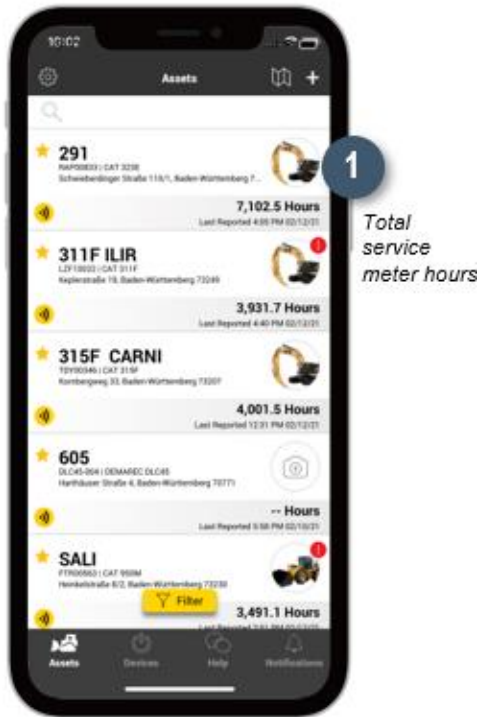
Confidently view your data with recent updates that enhance consistency between your equipment management tools – the Cat App and My.Cat.com. Ensure accuracy with new special character additions to establish your account.

NEW FEATURES

Data Precision with My.Cat.Com

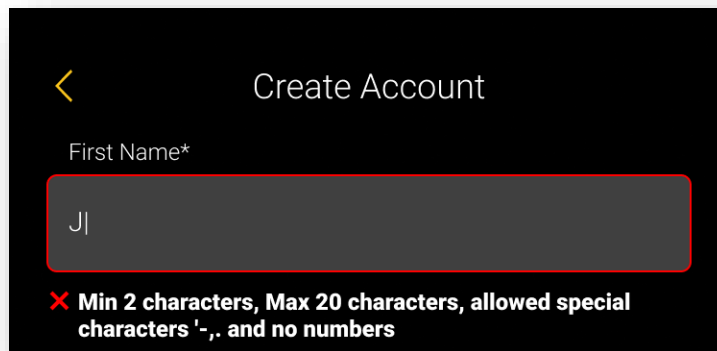
Effectively manage your equipment and enhance business decisions with the Cat App's latest data integrity update. Now you can validate your telematics data consistency in the Cat App and My.Cat.com with precision enhancements to hours and fuel detailed metrics, including:

- 1 Total service meter hours
- 2 Daily utilization data
- 3 Weekly fuel data
- 4 Daily fuel data



Create Your Account with New Characters

Now you can create your account with accuracy and ease. We've updated the Account Creation special character library to include "-" and "." to give you more flexibility when establishing your identity.



The screenshot shows a mobile app interface for creating an account. At the top, there is a yellow back arrow and the title "Create Account". Below the title, the label "First Name*" is positioned above a text input field. The input field contains the text "J|". Below the input field, a red error message is displayed: "X Min 2 characters, Max 20 characters, allowed special characters '-', and no numbers".

BUG FIXES

We've addressed the following bug fixes to enhance the overall user experience:

FIX DETAILS	VERSION	BUG NUMBER
Android - Loading and Loading times improvements	2.23	274028
Backend - DCV - Selected company is sent to client twice	2.23	331711
Android -Low Utilization Spanish language red text appears incorrect	2.23	336389
iOS - Map - Pin Pop up takes user to incorrect Asset	2.23	337172
Backend - Missing data on heroku for Asset time stamps missing	2.23	340310
Backend - DCV - Invalid group id in viewing field causes Dealer user to show as regular user	2.23	340386