

# CAT® APP RELEASE NOTES iOS\_2.18 | ANDROID\_2.18

November 2020

## CAT® APP

### 24/7 EQUIPMENT MANAGEMENT ON-THE-GO

Efficient equipment management starts with the Cat App. Track the location and health of your equipment, order service and parts, and activate telematics devices directly from your mobile device. Staying on top of your fleet 24/7 has never been easier.

## NEW FEATURES

### Fleet-Level Connectivity Icons

We've consolidated the number of icons to simplify an asset's connectivity and current data reporting status. You will now see three available options:



Icon with Yellow Background: **Connected and Asset is reporting data**



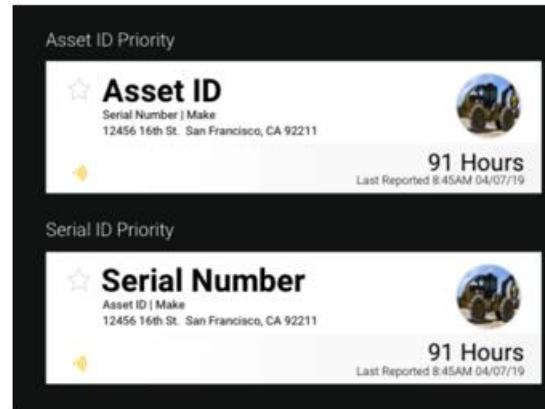
Yellow Icon: **Connected, but Asset has not reported data in the last 7 days**



Grey Icon: **Not Connected**

## Asset ID & Serial Number Visible Preference

A new Asset ID and Serial Number Preference feature is now available. This allows you to personalize each asset, making it easier to recognize equipment information.



## Font Support with iOS

Our icon library has been updated in order to streamline the font files and updated our font to streamline our icon library.

## BUG FIXES

We've addressed the following bug fixes to enhance the overall user experience:

FIX DETAILS	VERSION	BUG NUMBER
Asset detail remove incorrect text on unconnected assets	Android	296698
Asset displays no location data but has a location	Android	300472
Asset tile in fleet list has corrected location data text	Android	296697
Changed "Assets" to "Equipment" on Get PL542 available equipment screen	Android	305136
<i>DCV</i> : Button to switch accounts updated text	Android	300470
<i>DCV</i> : Load PM settings upon switching account	iOS	298228
Demo mode has been removed for all users that have completed ingest	Both	267796
<i>Equipment</i> : Calculations previously omitting available data	Android	302251
<i>Equipment</i> : Updated details for asset with no subscription	Android	299788
<i>Equipment</i> : Util chart above scale for daily 24h usage	iOS	305114

<i>Fault Code</i> : Timestamp does not appear on Fault Code details screen	Android	300466
Fuel report with negative value	Android	305102
<i>PL542</i> : Asset Serial Number and Asset ID appear correctly when selecting assets	Android	296555
Updated sort order for DueNow	Android	298452

