



CAT® APP RELEASE NOTES iOS_2.20 | ANDROID_2.20

December 2020

CAT® APP

24/7 EQUIPMENT MANAGEMENT ON-THE-GO

Efficient equipment management starts with the Cat App. Track the location and health of your equipment, order service and parts, and activate telematics devices directly from your mobile device. Staying on top of your fleet 24/7 has never been easier.

WHAT'S NEW

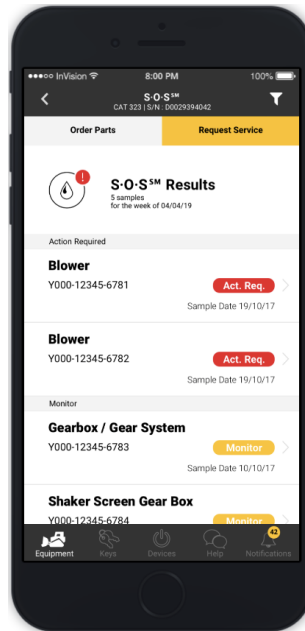
S•O•S results are now available in the Cat App, allowing users to view valuable insights to prevent unexpected failures and unplanned downtime. Google Maps has been upgraded to the latest version and includes clustering of assets in the map view. In addition, we've continued to improve app quality to enhance the overall user experience.

NEW FEATURES

S•O•S Services Results Now Available

Cat App users can now review their S•O•S Services results in the Cat App, providing users with further access to critical information. View S•O•S results with our new filtering capability. This feature allows users to reduce the larger fleet list to view only machines with S•O•S results. When clicking further into equipment details, users can view results that have been completed within the last 7 days and all the associated actions required.

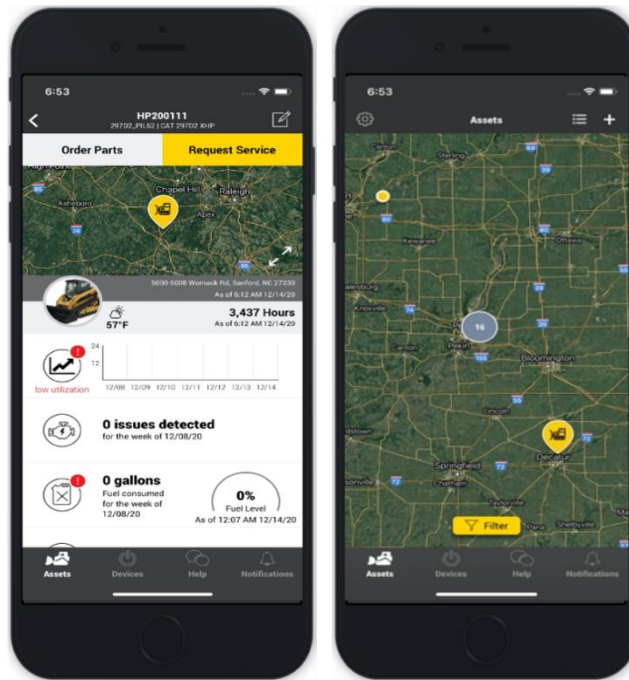
Cat S•O•S Services can save you thousands of dollars in owning and operating cost, with a simple checkup. All you have to do is provide the sample. Our fluid analysis experts do the rest – providing you with reports you can understand and recommendations you can act on, fast. You Cat Dealer is here to help – Contact Your Dealer.



ENHANCEMENTS

Updated Version of Google Maps

To enhance the geographical experience, Cat App updated to the latest version of Google Maps. This enhancement includes clustering, which allows the user to see a cluster marker with a display number on the map. The marker number indicates the combined number of assets within close proximity. Upon zooming in, the number on the cluster decreases and users will see the individual markers on the map.



PERFORMANCE IMPROVEMENTS

The following performance improvements have been made to increase the App's stability:

- Reduced the download size on Android by over 50%
- Improve load times of the map with the update to Google maps.

BUG FIXES

We've addressed the following bug fixes to enhance the overall user experience:

- Android library improvements to reduce the download size.
- Improve load times

FIX DETAILS	VERSION	BUG NUMBER
iOS - Create Account email - Country code not sent to backend	2.20	308508
iOS - DCV - Japanese - Users cannot search companies using Kanji Japanese characters	2.20	253016
iOS - Equipment - Low Util warning not raised when expected	2.20	305108
iOS - Equips - Cannot search assets by MAKE	2.20	310668
iOS - Fleet List last reported does not update after pull down or re launch	2.20	311193
iOS - Incorrect connectivity icon for Last Reported Date outside of 7 day window	2.20	310316
Android - 'Fuel Level' instead of 'Fuel' in filter text	2.20	315889
Android - App stutters and lags with very large fleets	2.20	303482
Android - Can't exit Add Asset screen after setting map filters	2.20	311134
Android - Equip - Warn badge not present for PM overdue	2.20	311672
Android - EquipList - 'Last Reported' shown for last_reported_time NULL	2.20	310043
Android - indefinite loading screen appears after killing app and tapping an asset while in offline mode	2.20	310390
Android - No response after tapping Filter button on Map screen	2.20	311143
Backend - Email - Your Fleet is ready - view in cat app tag	2.20	318563
Backend - Filter - Fault Code Filter has incorrect count	2.20	313611
Backend - Investigation - DCV and Dealer code ingest	2.20	273898
Backend - Weekly Utilization calculated incorrect.	2.20	314029

