



313D, 313D2 & 315D HYDRAULIC EXCAVATORS PARTS REFERENCE GUIDE

LET'S DO THE WORK.™




PROTECT YOUR INVESTMENT WITH GENUINE CAT® PARTS

Thank you for selecting the Cat® 313D/315D Hydraulic Excavator.

This guide is designed to provide you with a quick reference for the parts and part numbers you need to keep your Cat 313D/315D Hydraulic Excavator running at peak efficiency.



MAINTENANCE

Proactive preventative maintenance extends the life of your machine and protects your investment. Only Caterpillar knows Cat equipment's filtration and lubrication requirements and offers parts kits to match your machine's maintenance cycles.

SCHEDULED MAINTENANCE PARTS	
	GREASES
	PLANNED MAINTENANCE KITS

REPLACEMENT PARTS

Proper maintenance minimizes the need for repair and replacement. In the event that replacement parts are required, the use of genuine Cat parts helps maximize machine performance and maintains high resale value.

WEAR PARTS	
	GROUND ENGAGING TOOLS
	UNDERCARRIAGE
	PINS AND BUSHING
REPAIR PARTS	
	CAB GLASS
	HOODS/DOORS/CAPS
	CAB ACCESSORIES, MIRRORS AND LIGHTS
	BUMPERS AND GUARDS
	ENGINE PARTS
	CYLINDER PARTS
	PUMPS & MOTORS
HYDRAULIC CYLINDERS	

GREASES

	STANDARD MAINTENANCE GREASES		
Previous Cat Product Name	Cat Ultra 5 Moly #1	Cat Ultra 5 Moly #2	Cat Advanced 3 Moly
Current Cat Product Name	Cat Extreme Application Grease 1	Cat Extreme Application Grease 2	Cat Prime Application Grease
Grade (NLGI)	1	2	2
Melting point (deg C)	260	260	260
Ambient Temperature (deg C)	-35 to +40	-30 to +50	-20 to +40
Base Oil Type	Mineral	Mineral	Mineral
Color	Dark Gray	Dark Gray	Dark Gray
Cartridge (390 g / 14 oz)	452-5996	452-6001	452-6006
Plastic Pail (5 kg / 11 lb)	–	–	–
Plastic Pail (16 kg / 35 lb)	452-5999	452-6004	452-6009
Keg (55 kg / 120 lb)	452-5998	452-6003	452-6008
Drum (180 kg / 400 lb)	452-5997	452-6002	452-6007

GREASES FOR UNIQUE APPLICATIONS AND ENVIRONMENTS			
Cat Arctic Platinum	Cat Desert Gold	Cat Multipurpose	Hammer Paste
Cat Extreme Application Grease - Arctic	Cat Extreme Application Grease - Desert	Cat Utility Grease	
0	2	2	2
230	280	260	230
-35 to +40	-30 to +50	-30 to +40	-20 to +1100
Semi-Synthetic	Mineral	Mineral	Mineral
Dark Grey	Dark Grey	Blue	Bronze
508-2184	452-6016	452-6011	130-6951 (standard) 317-8491 (autolube)
–	–	–	133-8807
508-2187	452-6019	452-6014	–
508-2186	452-6018	452-6013	–
508-2185	452-6017	452-6012	–



PLANNED MAINTENANCE KITS

EXCAVATOR		A				
		Engine Oil/Filter Change		Fuel Filter Change	Lubricate Machine	Water Separator
Sales Model	Serial Number	Filter Element	Oil Qty (L) DEO-ULS™	Primary Element	Grease Adv 3Moly	Element
313D	GAP	322-3155	13.5	1R-1804	5P-0960	438-5386
313D2	RXZ	1R-1807	16			–
	SYG	322-3155	13.5	1R-1804	452-6006	–
	LCY					438-5386
315D	CJN	1R-0739	17.5	1R-0751		326-1644

EXCAVATOR		B		C			
		Hydraulic Oil Filter (Pilot)	Case Drain Oil Filter	AC Receiver Dryer	Hydraulic Oil/Filter Change		Final Drive Oil Change (Each Side)
Sales Model	Serial Number	Filter AS	Element	Accumulator Group	Filter Element	Oil Qty (L) Gydo Adv 10	Oil Qty (L) GO
313D	GAP	5I-8670	093-7521	176-1902	398-7171	104	3
313D2	RXZ				–	86	
	SYG				398-7171	104	
	LCY				266-7796	106	
315D	CJN						5

EXCAVATOR		WHEN REQUIRED			
		Air Filter		Cabin Air	
Sales Model	Serial Number	Primary Element	Secondary Element	Fresh Air Element	Recirculating Element
313D	GAP	131-8902	110-6331	293-1184	245-7823
313D2	RXZ			293-1183	
	SYG			293-1184	
	LCY				
315D	CJN	135-5788	135-5787	293-1183	293-1137

PARTS MAINTENANCE KITS				
MACHINE HOURS	500	A		
	1000	A	B	
	1500	A		
	2000	A	B	C
	2500	A		
	3000	A	B	
	3500	A		
	4000	A	B	C
	4500	A		
	5000	A	B	
	5500	A		
	6000	A	B	C

UNDERCARRIAGE

Machine Model		Undercarriage			
Sales Model	Serial # Prefix	Rollers	Sprockets	Steel Track Assembly	Steel Track Shoe
313D GC	GAP	396-3754 (Carriage) 459-5714 (Single Flange)	4I-7472	446-5068 500 mm, Triple Grouser Shoe, Grease Lubricated Track	137-6114 (Shoe) 4I-7538 (Bolt) 5I-6125 (Nut) 445-0555 (Link As)
312D2-GC	RXZ	4I-7345 (Carriage) 248-7259 (Single Flange)		176-4863 500 mm, Triple Grouser Shoe	137-6114 (Shoe) 4I-7538 (Bolt) 5I-6125 (Nut) 176-4870 (Link As)
313D2-GC	SYG	396-3754 (Carriage) 459-5714 (Single Flange)		446-5068 500 mm, Triple Grouser Shoe, Grease Lubricated Track	137-6114 (Shoe) 4I-7538 (Bolt) 5I-6125 (Nut) 445-0555 (Link As)
313D2 L	LCY			446-5069 500 mm, Triple Grouser Shoe	
315D	CJN	8E-5600 (Carriage) 163-4143 (Single Flange) (CJN1-2651) 423-3580 (Single Flange) (CJN2652 & up)	8E-9805	176-4852 600 mm, Triple Grouser Shoe	126-5062 (Shoe) 9W-3619 (Bolt) 9W-3361 (Nut) 194-1134 (Link As)

CAB GLASS

Machine Model		Cab Glass				
Sales Model	Serial # Prefix	Front Window, Upper	Front Window, Lower	Door Window	Side & Rear Window	
313D	GAP	388-9109	388-9108	384-6533	388-9107	
313D2	RXZ	207-0144 388-9117 388-9116 171-7503 388-9109	388-9108 176-1958	151-6792 384-6533	235-8909 388-9107	
	SYG	388-9117 388-9116 388-9109	388-9108	384-6533 151-6792	388-9107	
	LCY	388-9117 388-9116 388-9109	388-9108	384-6533 151-6792	388-9107	
315D	CJN	207-0144 171-7503	176-1958 156-6647	151-6792	235-8909 235-8915 185-8203	

GET BUCKET TEETH

Description	HD J-Series		GD J-Series		Cat® Advansys™	
	J250	J300	J250	J300	Advansys 70	Advansys 80
Penetration Plus		195-9180		450-7556	539-5673	505-4083
General Duty					539-6778	505-4086
Heavy Duty						505-3982
Heavy Duty Long Life (ARM)						505-3983
Leveling Edge Conversion (LEC)						505-3985
Wide	101-2927	4t-2215				505-4080
Penetration	100-6462	3G-3237				505-4081
Penetration Long Life (ARM)						505-4082
Spike						505-4084
Abrasion, Heavy Duty	8E-3755	8E-3756				
Long	9J-3169	9J-3167	449-2156	449-2159		
Long, Heavy Duty	8E-3750	8E-3751		449-2160		
Short	9J-3178	9J-3175				
Twin Sharp	229-7137					
Standard			539-5657	539-5658		
Pin		132-4766				
Retainer		149-5733				
Retention Kit (Incl Pin & Retainer)			539-5726	539-5736		

HOODS/DOORS/CAPS

Machine Model		Hoods/Doors/Caps					
Sales Model	Serial # Prefix	Engine	Air Cleaner, Battery	Radiator Access	Radiator Fill Cap	Hydraulic Tanks	Pump Compartment
313D	GAP	484-8682 492-9266	436-2801	436-2801	416-0965	520-9419	436-2800
313D2	RXZ	394-9448	436-2801	436-2801	416-0965	384-9067	436-2800
	SYG	464-8682	490-9266	490-9266	171-3369	520-9419	436-2800
	LCY	464-8682	490-9266	490-9266	171-3369	520-9419	436-2800
315D	CJN	268-0664 313-8128	268-0670 366-6334	268-0679 268-0670 366-6334	245-9212	—	268-0643 268-0699 375-8704

ACCESSORIES/MIRRORS/LIGHTS

Machine Model		Accessories/Mirrors/Lights				
Sales Model	Serial # Prefix	Window Wiper, Front Upper	Window Wiper, Front Lower	Visors	Mirrors	Lighting
313D	GAP	436-1116	—	—	142-3836	291-7762 275-7052
313D2	RXZ	234-6594 436-1116	—	—	142-3836	366-9343 291-7762 275-7052
	SYG	436-1116	—	—	142-3836	441-6375 291-7762 275-7052
	LCY	436-1116	—	—	142-3836	441-6375 291-7762 275-7052
315D	CJN	234-6594	273-5389	161-3750 161-3751	142-3836 489-5117	366-9343 291-7730 295-5163

ENGINE PARTS

Machine Model		Engine Parts								
Sales Model	Serial # Prefix	Starter Motor	Battery	Alternator	Water Pump	Fuel Injector Pump	Fuel Priming Pump	Turbocharger	Fuel Injector	Glow Plug
313D	GAP	357-5205	3T-5760 (Maintenance Free)	424-6821	355-2252	465-6106	—	484-9402	315-3381	462-2238
313D2	RXZ	225-3150	3T-5760 (Maintenance Free)	424-6821	225-8016	248-2366	299-9265	237-4734	236-1674 * 20R-0471	462-2238
	SYG	357-5205	3T-5760 (Maintenance Free)	560-6109	485-4894	375-2647 * 20R-4562	390-6840	482-0233	449-3315	462-2235
	LCY	357-5205	263-9574 (Cold Weather) 3T-5760 (Maintenance Free)	424-6821	355-2252	465-6106	—	484-9402	315-3381	462-2238
315D	CJN	294-1857 * 10R-7586	263-9574 (Cold Weather) 3T-5760 (Maintenance Free)	125-2994	296-4655	358-9085	390-4679	310-9695	326-4740 * 10R-7676	—



*Reman Parts

CYLINDER PARTS

Machine Model		Cylinder Parts		
Sales Model	Serial # Prefix	Boom	Stick	Bucket
		Lines Group	Lines Group	Lines Group
313D	GAP	385-2827 (LH) 385-2835 (RH)	385-2830	385-2833
313D2	RXZ			
	SYG			
	LCY			
315D	CJN	179-7644 (LH) 179-7645 (RH)	266-1187 320-0199 385-2914	131-9878 131-9879 385-2916

BUMPERS & GUARDS

Machine Model		Vandal Guards	Falling Object Guards (FOGS)	Backup Alarm	Rear View Camera
313D	GAP	-	-	251-4162	-
313D2	RXZ	-	-	-	-
	SYG	-	-	-	-
	LCY	-	-	-	-
315D	CJN	207-0176 (Top Front) 207-0164 (Middle Front) 207-0167 (Bottom Front) 207-0170 (Top Door) 207-0173 (Bottom Door)	484-8798	213-9100	251-4162

PUMPS & MOTORS

Machine Model		Head Pump	AUX Pump	Swing Motor	Travel Motor
313D	GAP	391-9444	-	422-9182 * 20R-8804	509-5929 (S/N 1-Up)
313D2	RXZ	391-9444	-	422-9182 (S/N 1144-Up) * 20R-8804	509-5929 (S/N 226-Up)
			-		421-4382 (S/N 421-4381)
		-	170-9893 (S/N 1-Up)		
	SYG	391-9444	-	422-9182 * 20R-8804	509-5929
	LCY	391-9444	-	422-9182 * 20R-8804	509-5929 (S/N 10392-Up)
315D	CJN	267-8088	342-1891	204-2814 (S/N 1-2439)	185-6953
				364-0978 (S/N 2440-2815)	
				369-9624 (S/N 2816-Up)	197-7180
					209-5992 * 10R-2154

*Reman Part

CYLINDER PARTS

Machine Model		Cylinder Parts			
Sales Model	Serial # Prefix	Boom	Stick	Bucket	
		Tube \ Rod \ Seal Kit	Tube \ Rod \ Seal Kit	Tube \ Rod \ Seal Kit	
313D	GAP	390-4188 (tube) 390-4189 (Rod) 393-7887 (seal kit)	390-4202 (tube) 390-1093 (rod) 393-7949 (seal kit)	390-4219 (tube) 390-4220 (rod) 390-4227 (seal kit)	
313D	RXZ				
	SYG				
	LCY				
315D	CJN	385-2860 (tube) 385-2861 (rod) 385-2908 (seal kit)	539-7996 (tube) 385-2863 (rod) 385-2942 (seal kit)	385-2864 (tube) 385-2865 (rod) 385-2946 (seal kit)	289-8114 (tube) 266-7879 (rod) 179-9638 (seal kit)
			539-7996 (tube) 385-2863 (rod) 385-2942 (seal kit)	266-7875 (tube) 266-7879 (rod) 179-9638 (seal kit)	289-8122 (tube) 266-7885 (rod) 322-8753 (rod) 179-9625 (seal kit)
			266-7862 (tube) 289-8109 (rod) 266-7874 (seal kit)	266-7813 (tube) 266-7885 (rod) 322-8753 (rod) 179-9625 (seal kit)	341-2822 (tube) 302-1738 (rod) 179-9625 (seal kit)
			289-8104 (tube) 289-8109 (rod) 266-7874 (seal kit)	281-8980 (tube) 281-8984 (rod) 179-9638 (seal kit)	342-1898 (tube) 342-1897 (rod) 179-9625 (seal kit)

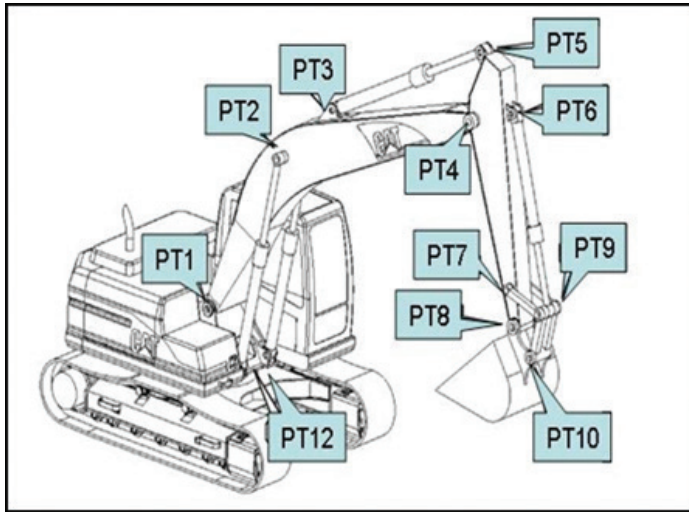
KITS

Kits are not available through parts.cat.com. Please contact your local Cat Dealer.

Machine Model		Kits	
Sales Model	Serial # Prefix	Description	Kit Number
313D	GAP	Ashtray with 90 Degree Opening	178-5530
		Ashtray with Singe Hole	259-7202
		Back Up Alarm	213-9100
		Seat Belt, 2 in (50.8 mm) Wide	490-5979
		Seat Belt, 2 in (50.8 mm) Wide	488-6524
313D2	RXZ	Seat, High Back, no Head Rest	333-4160
		Ashtray with 90 Degree Opening	178-5530
		Ashtray with Singe Hole	259-7202
		Back Up Alarm	213-9100
		Seat Belt, 2 in (50.8 mm) Wide	488-6524
		Seat, High Back, no Head Rest	333-4160
313D2	SYG	Seat Belt, 3 in (76.2 mm) Wide	488-6525
		Swivel Guard, Standard	471-1997

Machine Model		Kits	
Sales Model	Serial # Prefix	Description	Kit Number
315D	CJN	Ashtray Kit with 90 Degree Opening	178-5530
		Ashtray with Singe Hole	259-7202
		Back Up Alarm	213-9100
		Camera, Rear View, with Accessories	251-4162
		Seat, High Back with Head Rest	245-7884
		Seat, High Back, Heat, Headrest	423-6161
		Seat, High Back, no Head Rest	333-4160
		Seat, High Back, no Head Rest	333-4172
		Seat, Low Back, no Head Rest	327-6639
		Swivel Guard	471-1985
		Vandal Guard, Bottom Door	207-0173
		Vandal Guard, Bottom Front	207-0167
		Vandal Guard, Middle Front	207-0164
		Vandal Guard, Top Door	207-0170
		Vandal Guard, Top Front	207-0176
		Vandal Guard, Top Front	207-0161

EXCAVATOR LINKAGE CONFIGURATION



Name	Location
PT1	Boom foot
PT2	Boom cylinder
PT3	Stick cylinder
PT4	Boom nose or Stick pivot
PT5	Stick cylinder
PT6	Bucket cylinder
PT7	Idler link stick end
PT8	Stick nose
PT9	Bucket cylinder
PT10	Power link bucket end
PT12	Boom cylinder



LINKAGE PIN PART NUMBERS

Sales Model	Prefix	PT1	PT2	PT3	PT4	PT5	PT6	PT7	PT8	PT9	PT10	PT12
		Boom Foot	Boom Cylinder Rod End	Stick Cylinder Head End	Boom Nose or Stick Pivot	Stick Cylinder Rod End	Bucket Cylinder Head End	Idler Link Stick End	Stick Nose	Bucket Cylinder Rod End	Power Link Bucket End	Boom Cylinder Head End
313D	GAP	348-0629 Pin Assembly	172-3080 Pin	1R-6225 Pin Assembly	086-0523 Pin	1R-6225 Pin Assembly	127-3913 Pin Assembly	71-6843 Pin	086-0523 Pin	248-7820 Pin	086-0523 Pin	(2) 1R-6229 Pin Assembly
313D2	RXZ											
	SYG											
	LCY											
315D	CJN	267-0061 Pin Assembly (Reach)	180-7755 Pin	4I-4811 Pin Assembly	267-0060 Pin Assembly (Reach)	4I-4811 Pin Assembly	107-9852 Pin Assembly (Reach)	458-0543 Pin (Reach)	106-6878 Pin	458-0545 Pin (Reach)	106-6878 Pin Assembly	(2) 107-9739 Pin Assembly
		303-8860 Pin Assembly (Long Reach)			303-8863 Pin Assembly (Long Reach)		4I-4811 Pin Assembly (Long Reach)	106-6877 Pin (Long Reach)	106-6878 Pin	106-6876 Pin (Long Reach)	106-6878 Pin	

Separate Configurations - Reach, Long Reach

BUSHING & BEARING PART NUMBERS

Sales Model	Prefix	PT1	PT2	PT3	PT4	PT5	PT6	PT7	PT8	PT9	PT10	PT12
		Boom Foot	Boom Cylinder Rod End	Stick Cylinder Head End	Boom Nose or Stick Pivot	Stick Cylinder Rod End	Bucket Cylinder Head End	Idler Link Stick End	Stick Nose	Bucket Cylinder Rod End	Power Link Bucket End	Boom Cylinder Head End
313D	GAP	(2) 273-6814 Bushing	(2) 290-9178 Bushing	229-1093 Bushing	(2) 357-5710 Bushing (2) 273-6814 Bushing	229-1093 Bushing	229-1095 Bushing	(2) 229-1095 Bushing	(2) 229-1091 Bushing	248-7857 Bushing (2) 248-7835 Bushing	(2) 229-1092 Bushing	(2) 273-6945 Bushing
313D2	RXZ				(2) 357-5710 Bushing							
	SYG				(2) 357-5710 Bushing (2) 357-5710 Bushing							
	LCY				(2) 273-6814 Bushing (2) 357-5710 Bushing							
315D	CJN	(2) 244-4277 Bushing	(2) 241-7380 Bushing (2) 240-2913 Bushing	343-9331 Bushing 260-2527 Bushing 241-7231 Bushing	(2) 244-4277 Bushing (2) 228-5615 Bushing	260-2527 Bushing 241-7231 Bushing	260-2528 Bushing 260-2530 Bushing 284-7311 Bushing 343-9329 Bushing 248-7857 Bushing	(2) 229-1096 Bushing	(2) 228-5614 Bushing	(2) 244-4360 Bushing 240-2912 Bushing 240-2913 Bushing	(2) 228-5614 Bushing	(2) 260-2526 Bushing (2) 228-5614 Bushing





Cat Filters Provide Longer Injector Life

Chances are, you don't skip oil changes or regular maintenance on the family car. So why skip planned maintenance on your Cat equipment? Cat fuel filters outperform the competition, with up to 45% longer injector life and up to 80% decreased cost per hour.*



Productivity & Hydraulics Go Hand In Hand

If your hydraulic system isn't performing at peak efficiency, it's robbing your machine of performance. Efficiency losses usually occur slowly and can reach 20% before you detect a problem — that's one day of lost production every week! These losses can also increase your fuel consumption and operating costs.



Need help?

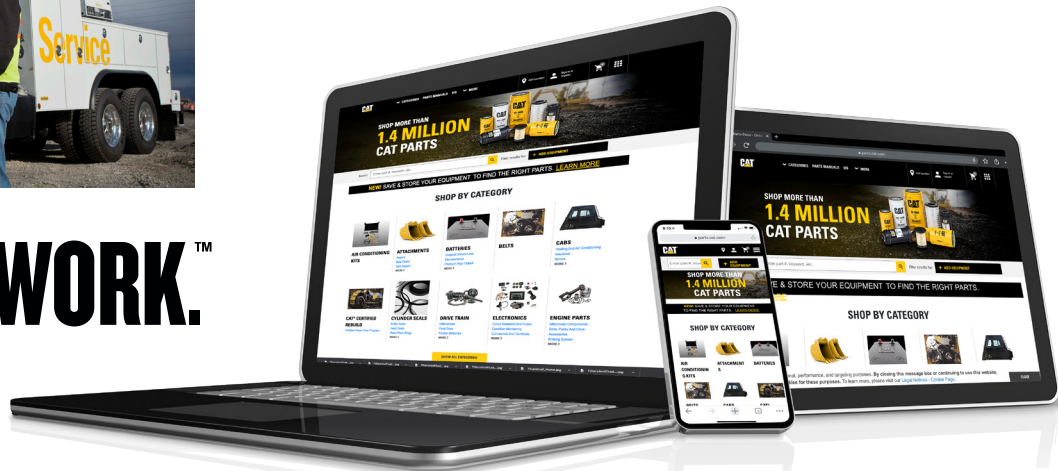
Your local Cat dealer can provide:

- Technical Support
- Customer Value Agreements
- Oil sample analysis
- Parts needed and equipment fit
- Repair financing
- Rental Services

Find your local dealer at www.cat.com today.



LET'S DO THE WORK.™



To buy Cat parts online, visit Parts.cat.com if you have a dealer account or MyParts.cat.com (US only) if you don't yet have an account.

* Visit <https://www.cat.com/filtersandfluids> for more details

