

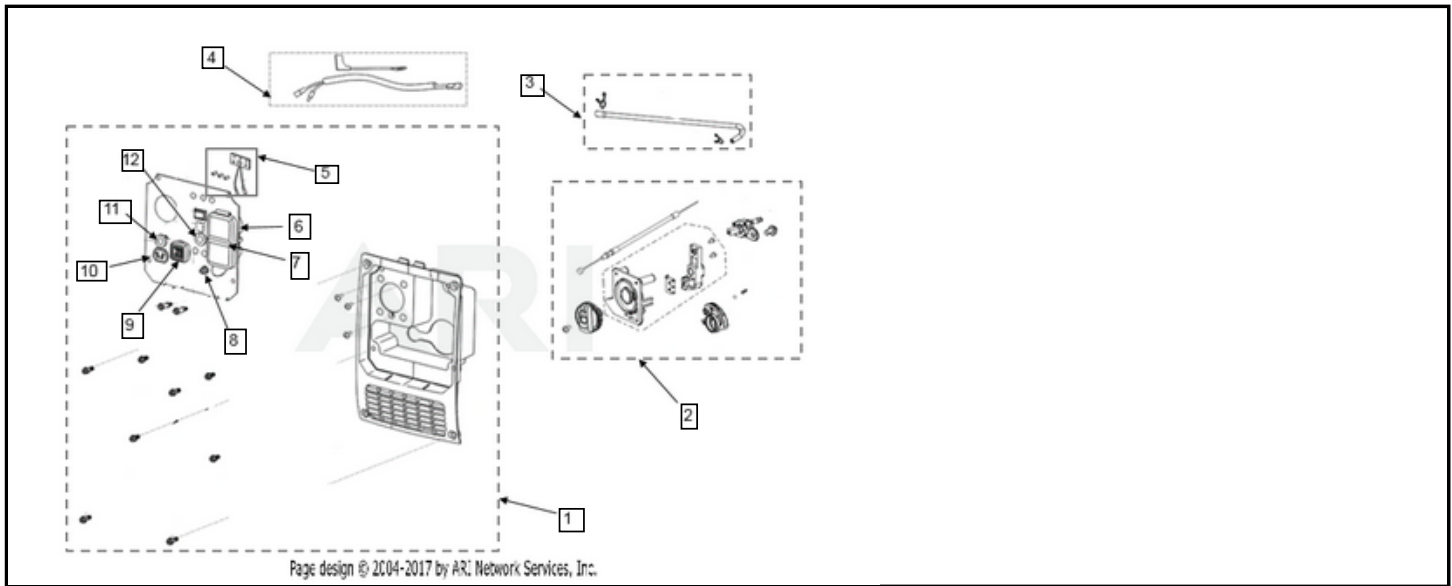
# ASSEMBLY

Control Panel Group

<- NEW MODEL

## INV2000 Control Panel Group

IN OUT



Page design © 2004-2017 by AR: Network Services, Inc.

Click and drag to move diagram view

| Tag | Part #   | Description   | USD     | CAD     |
|-----|----------|---|---------|---------|
| 1   | 517-9229 | Control Panel Group   Includes control panel assembly, rear cover, and mounting hardware                                | Call Us | Call Us |
| 2   | 517-9230 | Generator Switch Group   Includes generator switch assembly, choke handle, stopper, fuel switch, and mounting hardware. | Call Us | Call Us |
| 3   | 517-9231 | Fuel Line Group   Includes fuel line and collars  | Call Us | Call Us |
| 4   | 517-9228 | Control Panel Harness   Control panel harness for the INV2000   | Call Us | Call Us |
| 5   | 530-1201 | Indicator Light Assembly   Indicator Light Assembly   | Call Us | Call Us |
| 6   | 501-5371 | 120VAC GFCI   Duplex 120VAC GFCI  | Call Us | Call Us |
| 7   | 501-5372 | Duplex Rain Cover   Rain cover for duplex outlet  | Call Us | Call Us |
| 8   | 530-1193 | Ground Terminal   Ground Terminal for the INV2000   | Call Us | Call Us |
| 9   | 530-1194 | USB Receptacle   USB Receptacle for the INV2000   | Call Us | Call Us |
| 10  | 530-1197 | DC Receptacle   DC Receptacle for the INV2000   | Call Us | Call Us |
| 11  | 501-5361 | DC Circuit Breaker   DC circuit breaker   | Call Us | Call Us |
| 12  | 530-1196 | 20A Circuit Breaker   20A circuit breaker   | Call Us | Call Us |