

Powering the Future Through Sustainable, Innovative Energy Solutions



TURBINE DESIGN FEATURES



The Taurus™ 70 is a lightweight industrial gas turbine designed for high efficiency over its entire operating range. The turbine is built for the future with SoLoNOx™, the latest combustion and low emissions technology, fast starting capabilities and a modular design for maintainability. Its industrial design provides high reliability and durability with low lifecycle costs.

DIGITAL INTEGRATION



InSight Platform™, Solar's proprietary digital technology foundation, is integrated throughout this product and ready to connect in the field. InSight Platform provides an entire ecosystem of tools and capabilities that provide real-time diagnostics and analytics to Solar's Customer Service network, and performance metrics to the equipment owners and operators.

PACKAGE DESIGN FEATURES



The power generation module (PGM) package consists of preassembled modules which are fully tested prior to leaving the factory. The PGM greatly reduces installation cost and commissioning time. All components are of standard design for high efficiency, flexible operation and ease of maintenance. Solar can provide scope to include only the turbine generator set or the entire power island.

CUSTOMER SERVICES



Solar's worldwide service organization is dedicated to your success. Our culture of customer care is the foundation of our commitment to the highest quality customer experience. With more than 60 service locations around the world, we are committed to ensuring reliable, efficient performance that precisely fits your requirements.

Powering the Future Through Sustainable, Innovative Energy Solutions

Performance

Output Power	8180 kWe
Heat Rate	10 470 kJ/kWe-hr (9920 Btu/kWe-hr)
Exhaust Flow	96 675 kg/hr (213,125 lb/hr)
Exhaust Temp.	520°C (970°F)

Nominal rating – per ISO

At 15°C (59°F), sea level

No inlet/exhaust losses

Relative humidity 60%

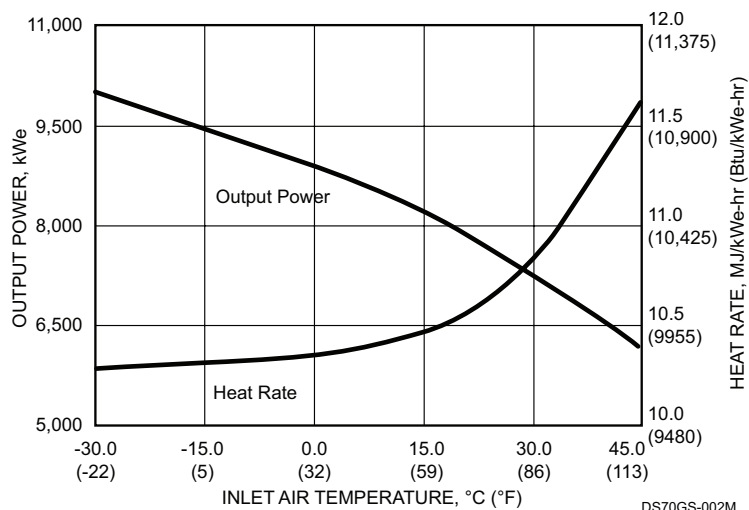
Natural gas fuel with
LHV = 35 MJ/Nm³ (940 Btu/scf)

No accessory losses

Engine efficiency: 34.4%

(measured at generator terminals)

Available Power



Package Dimensions

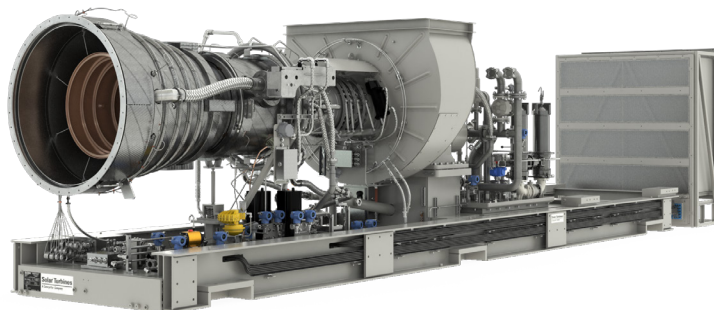
Length: 11.1 m (36' 3")

Width: 2.9 m (9' 2")

Height: 3.7 m (12' 1")

Package Weight, Approx: 61 775 kg (136,215 lb)

Dry weight, unenclosed height



Solar Turbines Incorporated
P.O. Box 85376
San Diego, CA 92186-5376

Caterpillar is a trademark of Caterpillar Inc. Solar, Taurus, SoLoNOx and InSight Platform are trademarks of Solar Turbines Incorporated. Specifications subject to change without notice.
©2020 Solar Turbines Incorporated. All rights reserved.
DSPGM70/1120/EO

FOR MORE INFORMATION

Telephone: (+1) 619-544-5352

Email: infocorp@solarturbines.com

Internet: www.solarturbines.com

