

SUMMER 2020

GOVERNMENTAL SOLUTIONS

A CATERPILLAR PUBLICATION SERVING GOVERNMENTAL AGENCIES



NO RAIN
DELAYS

TANGIPAHOA PARISH LANDFILL REMAINS OPEN,
NO MATTER THE WEATHER

CATERPILLAR®



NEW BACKHOE LOADERS

FIVE NEW CAT® BACKHOE LOADER MODELS BUILD ON SUCCESS OF THE POPULAR F2 SERIES

Caterpillar has five new backhoe loader models in the 14-ft and 15-ft size classes. The new line consists of the Cat® 415, 416, 420, 420 XE and 430.

By utilizing similar model platforms throughout the line, these new Cat Backhoe Loaders deliver component commonality and operating similarities throughout the range. The machines display the new Cat trade dress and nomenclature, which removes model suffixes.

A redesigned operator display incorporates analog machine gauges with a color LCD information display that is soft-key controlled for simple navigation. Informational icon pop-ups offer quick navigation between operating modes, while full-text

diagnostic descriptions simplify machine troubleshooting and maintenance.

The redesigned security system disables the engine, transmission and hydraulic system until a valid passcode is entered via the LCD operator control screen, or a machine-specific Bluetooth® key is detected. Pilot controls are standard on the 420 and 430 and optional on the 415 and 416 models. New seat mounted loader and backhoe controls and touchscreen LCD operator display are now standard on the 420 XE.

Greater Efficiency, Lower Operating Costs

The new engine delivers up to 10 percent improved fuel economy over

the prior engine. All models in the new backhoe loader line feature standard 4-wheel drive with rear differential lock for improved traction in poor ground conditions.

All new models offer adjustable auxiliary hydraulic flow to the backhoe, so machine hydraulics can be fine-tuned to meet the operating specifications of hammer, thumb and auger attachments. To increase machine versatility, the new Cat line can be factory-equipped, or use a field-installed kit to add an optional Integrated Tool Carrier loader coupler for fast tool changes. Importantly, these new backhoe loaders are compatible with F2 series attachments, eliminating the need to purchase new attachments.

Offering remote data monitoring through VisionLink®, the latest version of Cat Product Link™ comes standard on these new models. Agencies can customize machine operating data gathered like fuel usage, scheduled service reminders and fault code alerts to meet specific needs for improved management of your agency fleet.

For more information about the new Cat Backhoe Loaders, contact our dealership or visit: https://www.cat.com/en_US/products/new/equipment/backhoe-loaders.html.

BACKHOE LOADER SERIES SPECIFICATIONS					
	415	416	420	420 XE	430
Engine	Cat C3.6	Cat C3.6	Cat C3.6	Cat C3.6	Cat C3.6
Net power, hp	70	86	92	92	107
Operating weight lbs.	15,246 - 20,257	15,591 - 21,050	16,279 - 21,515	16,279 - 21,515	16,590 - 22,355
Loader lift capacity, max. height, lbs.	6,730	6,730	7,230	7,230	7,230
Max. hinge pin height	11' 5"	11' 5"	11' 5"	11' 5"	11' 5"
Max. dig depth, std. stick, ft	14'	14'	14'	14'	11' 5"
Std. stick lift cap @ 8 ft, lbs.	5,371	5,371	6,767	6,767	6,529

4 Hydraulic System Management

Extend the life of your equipment

5 950 GC Wheel Loader

Great choice for governmental fleets

6 Reduce Machinery Repair Bills by 25 Percent

An upfront investment in Cat® Planned Maintenance Kits for your agency fleet saves money over the long term

7 Retrofit Options

For Compact Track, Skid Steer and Multi Terrain Loaders



8 CAT® Grade with Cross Slope

Higher accuracy, lower costs



ON THE COVER:

Sixteen Cat® machines help keep operations running smoothly at Tangipahoa Parish Landfill.

9 From The Archive

Born on the Fourth of July

10 No Rain Delays

Tangipahoa Parish Landfill remains open, no matter the weather



13 Procurement Solutions For Governmental Agencies

Make taxpayer money go further

14 Equipment Training Solutions

Help your operators reach their full potential

15 Cat® Detect for Personnel

Protecting your agency's most valuable assets

HYDRAULIC SYSTEM MANAGEMENT

EXTEND THE LIFE OF YOUR EQUIPMENT

Effective management of the hydraulic system helps keep machines performing at peak productivity while minimizing downtime and operating cost.

The condition of a machine's hydraulics can make a big difference in the amount of work that gets done and at what price. Our dealership offers a range of integrated system management services to help machine owners maintain top performing hydraulics.

Poor system management can lead to hydraulic system component failures. When these occur, they generate large amounts of abrasive debris that circulates throughout the system. Cleaning up after a hydraulic component failure can take weeks and cost thousands of dollars.

To help avoid hydraulic system component failures, our dealership offers three integrated services to help keep your hydraulic systems operating at peak performance:

- **Contamination Control**
- **S•O•SSM Services**
- **Technical Inspections**

Contamination Control

Fluid contamination is the leading cause of hydraulic system failures. By learning to control contamination, you can help maintain system efficiency, extend component life and correct problems before they lead to costly repairs and unscheduled downtime.

Internal clearance range is measured in size from five to 30 microns. To put this in perspective, the diameter of a human hair is 80 microns. The smallest particle seen by the human eye is 40 microns. So, even particles too small to see can damage today's hydraulics.

Schedule S•O•SSM Fluid Services

Because hydraulic systems are closed systems, much of what you need to know is happening internally. The best way to monitor

contamination and the overall health of your hydraulic system is the use of our dealership's S•O•SSM Services.

Regular fluid sampling identifies problems early and helps you head off major repair expenses. Caterpillar engineers and chemists have developed oil analysis tests to evaluate not just the fluids, but also the condition of hydraulic components. Our skilled technicians interpret the findings, and drawing upon their database, can quickly diagnose problems more accurately than independent oil labs.


Cat® S•O•S Services Reports:

- **Oil Cleanliness Analysis (particle count)**
- **Wear Rate Analysis (component wear)**
- **Oil Condition Analysis (oil degradation)**
- **Oil Contamination Analysis (external contaminants)**

Tech Inspections

To make sure hydraulics-intensive equipment is performing at its best, Caterpillar recommends detailed checks of the engine and hydraulics every 2,000 operating hours or when fluid analysis reports show high levels of contamination. These periodic inspections include checks of system pressures, cycle times and more that can identify problems and help us recommend corrective actions.

One of the effects of fluid contamination is hydraulic system efficiency loss which occurs slowly over time. Studies show hydraulic system efficiency can erode as much as 20 percent before even the most astute machine operators detect there's a problem. This equates to increased fuel usage, decrease in production, extended job times and additional wear and tear on the machine.

Call and ask how our dealership can incorporate a hydraulic system management program into a Customer Value Agreement to achieve these results for your operation today. 



GREAT CHOICE FOR GOVERNMENTAL FLEETS

The Cat® 950 GC wheel loader is quick and powerful, ideal for working a stockpile, loading or unloading trucks or removing snow. The GC model is different by design—built to deliver dependable performance and excellent fuel economy at a lower price point. Here are 10 reasons why this loader is a great choice for governmental fleets:

- 1. Economy and reliability in one durable design.** With its simple design and proven components, the 950 GC meets your expectations for high reliability and long life while accommodating a tight budget.
- 2. Best-in-class dump height.** City and county crews spend a lot of time loading and unloading trucks. We gave the 950 GC extra dump height so your operators can work quickly and confidently with trucks of all sizes.
- 3. High-speed loading.** To power the bucket through the pile, the load sensing hydraulic system only pumps as much hydraulic fluid as needed to meet the performance demands by the operator.

The system also provides the ability to utilize the lift and tilt functions simultaneously while lifting through the pile during the dig for an unimpeded dig motion. Combined with the design of Caterpillar's patented Performance Series Buckets, and the operator has a very efficient cycle time, with up to 10 percent higher bucket fill factors while reducing fuel consumption up to seven percent.
- 4. One machine, many jobs.** Do more jobs with a single machine by investing in Cat attachments and an optional Fusion™ Quick Coupler system. Adding forks, a broom or snow removal tools lets you keep your loader busy for more hours every year—a smart use of limited resources.
- 5. Focus on fuel.** Since fuel is a big line item in an equipment budget, we're always looking for ways to help you do more work with every tank. This machine features a fuel-efficient

engine, load-sensing hydraulics and engine idle technologies that automatically control rpm to conserve fuel.

- 6. Productive work environment.** Operators work comfortably and productively in the 950 GC's quiet, roomy cab. They appreciate features like the ergonomic seat, low-effort controls and standard rearview camera.
- 7. Parts commonality.** The 950 GC is powered by a Cat C7.1 ACERT™ engine, the same model used in many other Cat machines. A common engine platform makes it easier to manage parts inventory.
- 8. Gull-wing service doors and other quick-service features.** No more tilting the hood to access the engine compartment. The GC design incorporates easy-open doors and grouped, ground-level service points to streamline maintenance.
- 9. Hard data for tighter cost control.** Cat Link technologies capture critical machine data and make it available in the office or on a mobile device. With quick access to facts about utilization, hours, location, fuel burn and more, you'll do an even better job managing your agency's fleet and operating costs.
- 10. Lowest lifecycle cost.** Your Cat dealer has the people, tools and resources to keep your 950 GC running reliably and economically over the entire lifecycle. That means you'll not only save on acquisition costs, you'll also benefit from a lifetime of lower owning and operating costs.

For fast, efficient loading at a lower cost, put a 950 GC to work in your community. It's a great choice for cities, counties and other municipalities—delivering the performance and reliability you expect from Caterpillar at an attractive acquisition cost.

For more information, contact our dealership. 📞

PREVENTIVE MAINTENANCE CAN REDUCE MACHINERY REPAIR BILLS BY 25 PERCENT

AN UPFRONT INVESTMENT IN CAT® PLANNED MAINTENANCE KITS FOR YOUR AGENCY FLEET SAVES MONEY OVER THE LONG TERM

Protect your machine investments by ordering Planned Maintenance Kits for your fleet at the time of machine purchase. It's a wise investment in your fleet that will pay multiple dividends to your taxpayers. Here's just a few of the benefits:

Benefits of Planned Maintenance Kits

- Improve equipment and system reliability
- Make timely maintenance easier for your crew
- Reduce unexpected breakdowns
- Decrease expensive parts replacement
- Extend equipment service life
- Improve resale value



HOW IT WORKS

Step 1 Select your maintenance interval



- PM1: Every 250 hrs of machine operation
- PM2: Every 500 hrs of machine operation
- PM3: Every 1,000 hrs of machine operation
- PM4: Every 2,000 hrs of machine operation

Step 2 Select the parts you want



Customize the parts included in the kit by selecting from a list of recommended and optional parts

Step 3 Get 1 box with everything you need



Kit Contents Include:

- Parts
- List of items to inspect and check
- List of tools needed to perform tasks
- Instructions needed to complete all of the recommended tasks

For more information about Planned Maintenance Kits for your agency fleet, contact the parts and service experts at our dealership today or visit parts.cat.com.



RETROFIT OPTIONS

FOR COMPACT TRACK, SKID STEER AND MULTI TERRAIN LOADERS

Upgrade your machine for any application. Improve jobsite safety, boost productivity, enhance operator comfort or lower maintenance costs with our customizable retrofit options and accessories for compact machines.

Rear Camera

Easily add a rear camera kit to machines built with an Advanced Display but without a camera. No Advanced Display? There's a kit for that too!

LED Lights

Includes two forward facing adjustable work lights (cab mounted) and two rear facing LED work lights (frame mounted). LED lighting advantages vs. halogens include brighter work site illumination, cooler, and more resistant to vibration and longer life.

Cab Fire Extinguisher Mount

Provides in-cab mounting bracket that can accommodate up to a 5 lb (2.26 kg) fire extinguisher.

Advanced Display

Includes: Full color 127 mm (5 in) LCD screen with digital gauge display. Provides creep control, hystat response adjustment, i3 .mplement response adjustment, fuel gauge, hydraulic temperature gauge, engine coolant gauge, tachometer, language selection and advanced multi-operator anti-theft security and monitoring. Also provides a USB charging port.

Radio Ready (No Radio)

Provides speakers, wiring, radio box, antenna and cable, and hardware required to install a single DIN radio.

Radio (AM/FM/Bluetooth with Microphone)

Includes radio with Bluetooth interface, microphone and auxiliary inputs (USB port and aux input jack) to connect external audio devices. (Requires: Radio Ready operator station.)

CTL Drive Line Guards

The kit provides additional guarding for customers in demanding applications where guarding for the drive lines is desired.

MAINTENANCE RELATED

AC Breather

This kit provides increased cab air filter life for machines used in dusty or high dust/airborne debris applications. Kit contains duct work and hardware required to relocate the cab fresh air intake to a higher location near the roof of the cab.

Engine Air Precleaner

Turbine-type precleaner for the engine air filter. For use in high dust/debris applications to maximize engine air filter life.

Battery Disconnect

Provides components needed to install a battery disconnect switch.

Debris Kits (Machine Enclosure)

This kit provides additional components for customers in debris-intensive applications that restrict debris and other material from entering the engine compartment and the lower machine frame. Provided are various seals and covers that cover the openings that exist between the frame/body/cab of the machine as well as a fuel strainer and an exhaust stack cover. The Debris Barrier Kit is required in applications where airborne debris is present and should be used in conjunction with the Turbo Debris Guard Kit.

For more information about retrofit options for your SSL, MTL or CTL, contact our dealership. ☎



CAT[®] GRADE WITH CROSS SLOPE

HIGHER ACCURACY, LOWER COSTS

Cat[®] GRADE with Cross Slope is a fully integrated blade control system for M Series Motor Graders. It simplifies machine operation, reduces fatigue and eliminates road spec variation—while saving time, fuel and material.

Putting it to the test

To quantify the benefits of Cat GRADE with Cross Slope, an eight-month production study was done with real operators using the technology in the real world. Here's the 4-1-1 on the testing process:

- **Team.** Seven people participated, including folks from Spink County South Dakota Highway Department, South Dakota State University, Cat dealer Butler Machinery and Caterpillar.
- **Machines.** Two 140M2 AWD Motor Graders were tested, one with Cat GRADE with Cross Slope and one without.
- **Operators.** Two experienced operators ran the machines, performing their everyday job functions.
- **Location.** Testing took place in rural South Dakota on two, two-mile stretches of gravel road, each with similar elevations.
- **Impartiality.** Data was collected by team members from South Dakota State and Spink County.

What did the data show?

Cat GRADE with Cross Slope had a powerful impact on efficiency and costs. Here are just two benefits the technology delivered:

- **Improved accuracy.** The machine equipped with Cat GRADE with Cross Slope hit the target specification for road crown (4.5%) much more consistently than the other grader. Its average deviation from target was just .10%, compared to 1.3% for the grader that didn't have the technology. With higher accuracy came higher efficiency and lower costs.
- **Better fuel economy.** The higher-tech machine burned much less fuel during the eight-month test—more than 400 gallons less—at a cost of over \$1,400. Projected fuel savings for the county's five graders over a five-year period were nearly \$55,000.

For more information about how Cat GRADE with Cross Slope can improve accuracy and save fuel, contact our dealership. [®]

BORN ON THE **FOURTH OF JULY**

On July 4, 1938, while families were viewing fireworks and celebrating the birth of the United States, Caterpillar quietly announced a secret that had been under development for some time: The birth of a completely new model of motor grader: The Cat® Diesel No.12.

The First Modern Motor Grader


Recognized as one of Caterpillar's most significant motor grader designs of all time, the Diesel No.12 was originally called an Auto Patrol. And, while motor graders were initially designed for highway maintenance, the No.12 was also developed to do construction work.

With its wide range of blade adjustments, and the combination of tandem drive and low-pressure tires, the No.12 had both the traction and the speed necessary for construction and highway maintenance work.



A Leader in Yellow Iron

Caterpillar was, and remains today, the leader in development of what we call "yellow iron." In fact, you can see the DNA of the Diesel No.12 in the Cat 12M Series. It is the longest-running production model in the grader product line.

The No. 12 was an example of Caterpillar using cutting-edge technology to provide our customers with the solutions they need. Today, we continue to focus on the changing needs of our customers by expanding our product and service offerings. 

APWA CALENDAR

Upcoming training and education programs from the American Public Works Association (APWA) include:



JUNE 25, 2020

The Click, Listen & Learn Program: **Reading Construction Plans** will be offered as a webinar.

JULY 9, 2020

The Click, Listen & Learn Program: **Incorporating Social Equity into Decision Making** will be offered as a webinar.

JULY 30, 2020

The Click, Listen & Learn Program: **Free Emergency Training for Public Works Professionals** will be offered as a webinar.

For more information or to register online, visit www.APWA.net. Questions? Call the APWA's Education Department at **800.848.2792**.

NIGP CALENDAR

Training and educational programs offered by the National Institute of Governmental Purchasing (NIGP) include:

JUNE 16, 2020

The course, **Requirements Planning and Understanding**, will be offered as a virtual class.

JUNE 23, 2020

The course, **Specialty Certificate: Foundations of Technology Procurement**, will be offered as a virtual class.

JULY 27, 2020

The course, **Alternative Dispute Resolution**, will be offered as a virtual class.



For additional information or to register online, visit nigp.org. More details are also available by calling **703.736.8900**.



NO RAIN DELAYS

TANGIPAHOA PARISH LANDFILL REMAINS OPEN, NO MATTER THE WEATHER

A hard rain's been falling for days; this is Louisiana after all, but a steady parade of trucks makes their way into the Tangipahoa Parish Landfill in Amite. A Cat® 140K Motor Grader keeps the access road in good driving condition, despite the weather, and the trucks keep rolling.

"It's been raining all week, so it's muddy. We put limestone and gravel down to keep the access roads open," says Donnie Colona, landfill operations manager. "The biggest challenge is keeping access roads open through the weather that we have here.

"They expect us to be open, regardless of the weather," Colona says. "It doesn't matter if it rains. We still have to do the work. We don't want to be closed."

When Tropical Storm Barry blew through Louisiana last summer, Tangipahoa Parish Landfill was open for business as usual on the Monday after the storm.

"There were probably 15 garbage trucks lined up at the gate that morning. They worked Friday, so they had to unload their Friday garbage in order to run their Monday routes," Colona recalls.

The Type II landfill processes between 500 and 600 tons of trash daily. It's open Monday through Friday, and accepts materials from the parish's 132,000 residents on Saturday mornings. The landfill, which has 34 employees, has a projected life of approximately 100 years.

Running Smoothly

Sixteen Cat machines help keep operations running smoothly at the Tangipahoa Parish Landfill.

While the 140K Motor Grader keeps roadways in good driving condition, a Cat 826K Landfill Compactor pummels trash into place on the working face. The compactor utilizes a Trimble compaction system with 3D imaging to improve efficiency.

"It helps us to be efficient by putting the materials in correctly the first time, and the equipment helps us make sure that we're getting the compaction that we need," Colona says. "We put the slopes in right the first time, and we know that we're not wasting air space."

The 3D imaging system is easy for operators to use. "The operator gets in that machine in the morning.



“We open at 6:30. What I like to see in the morning when I pull into the gate after it’s rained three inches is a truck driving out of here. I know that he was able to successfully come in here, dump his load, and then go on with his day.”

– DONNIE COLONA
Landfill Operations Manager,
Tangipahoa Parish Landfill

He pushes a button to start the compactor, and the Trimble system comes right on. He’s ready to roll in less than five minutes,” Colona says. “It’s color coded, and lets the operator know when an area is compacted. It lets the operator know the material isn’t sinking anymore, and it’s time to move on to another area.”

A Cat D6T LGP Dozer outfitted with GRADE with 3D builds cells for the placement of trash at the landfill. Cat GRADE with 3D is factory-integrated technology designed to help operators improve grading accuracy and efficiency. Cat GRADE with 3D matches blade load with ground conditions, helping the operator achieve full blade loads and produce smooth, quality grades with less effort. “It takes all the guesswork out. It’s awesome,” Colona says.

Eight Cat 730C and 730C2 articulated haul trucks transport material excavated for cell construction to the working face, where the material is used to cover trash.

“We work 12 hours a day,” Colona says. “We’re hauling 200 loads of dirt a day with those trucks.”

Keeping Uptime High

All Cat machines in the Tangipahoa Parish Landfill fleet are leased from Louisiana Cat. Leasing means that the fleet consists mainly of newer equipment. Leased machines are typically under warranty as long as they stay in the fleet. This helps keep uptime high.

“The main advantage of leasing is machine uptime. With newer machines, uptime is high,” Colona notes.

A service agreement with Louisiana Cat is included in leases.

“You call, and they’re here right away. They’ve got good mechanics. The service department is excellent, very dependable,” Colona says.

Louisiana Cat technicians travel to the landfill to service machines, which helps machines return to work quickly.

S•O•SSM Fluids Sampling helps keep uptime high, and prevents





small problems from escalating into larger ones.

“If there’s any trace of dirt, metals, wear, anything like that, they send me an email or call and ask when would be a good day to service the machine,” Colona says. “They’ll come by after-hours, or before work begins in the morning. They schedule service around our schedule, so we can keep working.”

Parts delivery is another service provided by Louisiana Cat.

“If we order a part today, we’ll have it the next day,” Colona says. “It’s very quick.”

Leasing and other services provided by Louisiana Cat including technology that improves efficiency, high-quality machines, and top-notch employees combine to keep Tangipahoa Parish Landfill open during inclement weather and operating smoothly. 🗑️



*Left to right: **Dusty Braase, Damian Patterson, Donnie Colona, and Connie Henry***

TANGIPAHOA PARISH LANDFILL

CAT® FLEET

826K Landfill Compactor

D6T LGP Dozer

930K Wheel Loader

930M Wheel Loader

140K Motor Grader

336E L Excavator

730C Articulated Truck (four)

730C2 Articulated Truck (four)



PROCUREMENT SOLUTIONS

FOR GOVERNMENTAL AGENCIES

When you procure equipment and services for state or local governmental agencies, the pressure is always on to conserve resources. If your current process only accounts for initial purchase price, accepting the lowest bid may cost you in the long run. We're here to help you make taxpayer money go further.

- Count on Cat® dealer services to increase uptime, control costs and extend component life.
- Use Cat resources to solicit and compare bids on a lifecycle cost basis.
- Buy Cat products and services through cooperative purchasing agreements to save time, improve efficiency and reduce risk.
- Choose Cat products to maximize safety, productivity, fuel efficiency and resale value.

Why Cat Governmental?

Making it easy for you to invest in equipment and services that make your agency more successful is the goal of our governmental team. Dedicated solely to serving governmental buyers, we're on hand to help you with everything from selecting to financing, to operating equipment as safely and efficiently as possible.

State and local procurement professionals tell us our governmental group makes it easier to invest in equipment that makes their agencies successful.

Take Advantage of the Latest Tools & Resources

Buying heavy equipment for a governmental agency can be a time-consuming, complicated task, and it can be challenging to stay on top of the latest information. Our tools and resources will help you strengthen your bidding process, make more informed investment decisions and get the job done faster and more accurately.

Agency Support

Is new or used equipment best for your needs? What are the pros and cons of leasing versus buying? How do you keep employees and operators safe on the job? We know you have a lot on your plate. That's why we offer expert advice to help you weigh your options and make informed decisions.

For more information about Procurement Solutions for Governmental Agencies, contact our dealership. ☎





EQUIPMENT TRAINING SOLUTIONS

HELP YOUR OPERATORS REACH THEIR FULL POTENTIAL

THE SUCCESS OF YOUR AGENCY DEPENDS ON THE ABILITY OF YOUR OPERATORS. GOOD HEAVY EQUIPMENT OPERATORS KNOW HOW TO CUT DOWN ON UNNECESSARY WEAR AND TEAR WHILE OPERATING MACHINES SAFELY.

Learn how to elevate your operators to higher levels of proficiency and get the full potential out of your investment with our Caterpillar suite of operator training solutions. Improve the skills of your operators and maximize your return on investment with three types of heavy equipment operator training: Instructor-Led, E-Learning, and Cat® Simulator Operator Training.

Instructor-Led Training

Instructor-led heavy equipment operator training courses offer much more than customary orientation training shared at the time of machine delivery. Your equipment investment pays greater dividends when it is put to skillful use by taking your best heavy equipment operators and making them better.

E-Learning Operator Training

E-Learning Operator Training CDs and Caterpillar Online Training are created for entry-level operators, technicians, equipment owners, and others looking for basic knowledge on heavy equipment safety, pre-operation maintenance, and basic operating procedures.

Cat Simulator Operator Training

Simulator training provides a safe and economical way for new operators to gain an understanding of machine controls and learn proper operating procedures, while experienced operators can benefit by refining skills to increase proficiency levels.

With the Caterpillar suite of heavy equipment operator training solutions, your operators will learn the necessary skills to maximize efficiency and improve safety on the jobsite.

For information about the Demonstration & Learning Centers, contact our dealership. ☎



CAT[®] DETECT FOR PERSONNEL

PROTECTING YOUR AGENCY'S MOST VALUABLE ASSETS

Cat[®] Detect for Personnel identifies your agency's temporary, dynamic and dangerous work zones. Radio Frequency Identification (RFID) technology is placed within protective equipment such as safety vests or hard hats, and an antenna is installed in equipment to communicate with the RFID tags. If an operator reverses a piece of equipment installed with an antenna, they will be alerted inside the cab by a visual and audible alarm when a ground worker is behind them. A loud, audible alarm outside of the cab also alerts the ground worker of their entrance into the detection zone behind the equipment.

Key Benefits

- Greater protection for all workers on your agency jobsites.
- Any agency vehicle equipped with a Cat Detect for Personnel antenna enables an operator to detect any ground worker on the jobsite wearing a Cat Detect for Personnel equipped safety vest or hard hat.
- No false alarms—only detects objects that are tagged with RFID.
- High accuracy and repeatability to detect personnel upright, crouching, lying and sitting down.

Detection Tags Worn in Vests or Hard Hats

- Safety apparel fitted with RFID tags.
- Strategic application of tags provides 360° protection around personnel.
- Tags stay with ground personnel wherever they move.



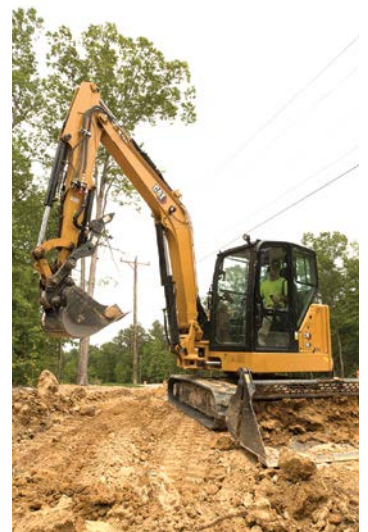
Operators Instantly Alerted to the Presence of Ground Personnel

- Beam-shaping antenna monitors a tight, customizable detection zone.
- Wireless link relays information to a compact in-cab display unit.
- Bright visual display and audible alarm warn operators when tagged personnel enter the detection zone.



Rugged. Reliable. Any Make, Model, Machine or Light Vehicle

- Easy installation. Ideal for mixed fleet applications.
- No false alarms. Detects only what is tagged.
- Low maintenance. Tagged items are washable. No charging required. Self-diagnostics ensure reliability.



To learn more about Cat Detect for Personnel, contact our dealership or visit Cat.com/safety.

110

YOUR EVERYDAY GRADER: THE NEW CAT® 140 GC



Choose the grader that's ideal for routine jobs — a new Cat® 140 GC. It's simple to own, operate and maintain and can also be customized for your jobsite. From extended service intervals to extra protection in demanding applications, the 140 GC offers you the right options for reliable performance on your everyday jobsite.

CONTACT US TO LEARN MORE OR GET DETAILS AT CAT.COM

LET'S DO THE WORK.™

© 2020 Caterpillar. All Rights Reserved. CAT, CATERPILLAR, BUILT FOR IT, their respective logos, "Caterpillar Yellow," the "Power Edge" trade dress as well as corporate and product identity used herein, are trademarks of Caterpillar and may not be used without permission.



SAVE TIME AND MONEY

Buying heavy equipment for a governmental agency can be a time-consuming, complicated task, and it can be challenging to stay on top of the latest information.

Our tools and resources will help you:

- **Strengthen your bidding process**
- **Make more informed investment decisions**
- **Finish the job faster and more accurately**

Bookmark the following web page to learn more:

[Cat.com/Governmental](https://www.cat.com/Governmental)

