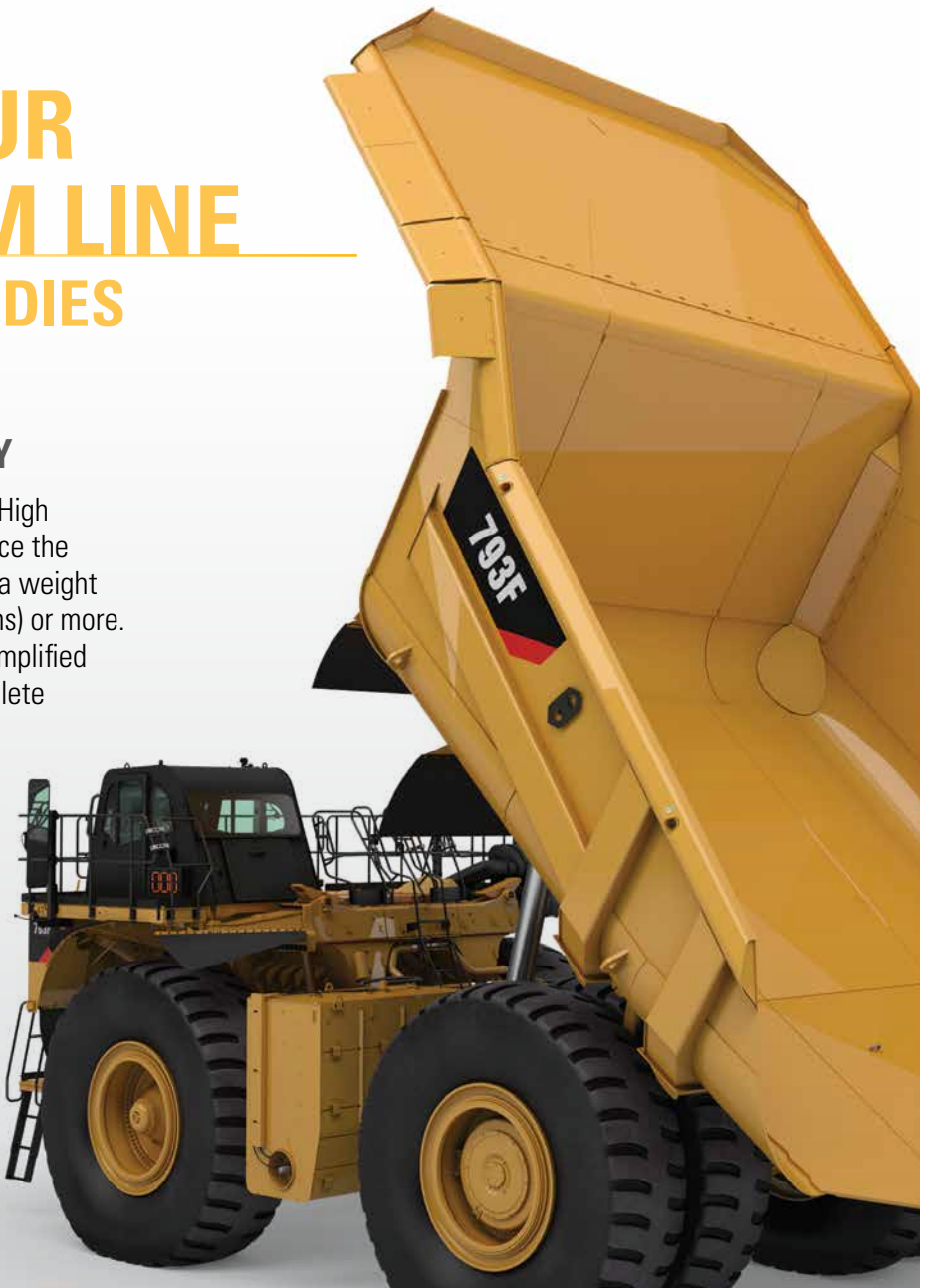


BOOST YOUR BOTTOM LINE WITH CAT BODIES

HIGH PERFORMANCE BODY

When you equip your 793F with a Cat High Performance (HP) body, you'll experience the benefits of a higher payload thanks to a weight reduction of 2.0-5.0 tonnes (2.2-5.5 tons) or more. The HP body features a lightweight, simplified and durable design that provides complete front machine coverage and extended overhead protection.

The HP body features robust top rail geometry with internal stiffeners and a high-visibility load placement indicator. Patented floating bolsters and spring plates improve overall durability by avoiding welds in high stress areas. In addition, the body requires only minimal liner coverage due to thicker and harder base plates. Curved front / side transitions minimize carryback.



THE BENEFITS

INCREASED PAYLOAD FROM
2.0-5.0 TONNES (2.2 -5.5 TONS)

REDUCED FUEL CONSUMPTION

OPTIMIZED PAYLOAD SPLITS

EXTENDED TIRE LIFE AND
FRONT WHEEL LIFE

LESS SPILLAGE

MINIMIZED CARRYBACK

GET THE RIGHT BODY FOR THE JOB

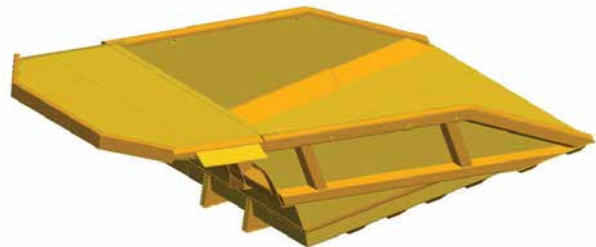
Matching the truck body to the application is a critical part of achieving the best value from your 793F. Caterpillar offers lightweight and specialty bodies specifically tailored to a wide range of applications. The Caterpillar exclusive 10/10/20 payload guidelines help achieve a balance of excellent payload with safe operation.



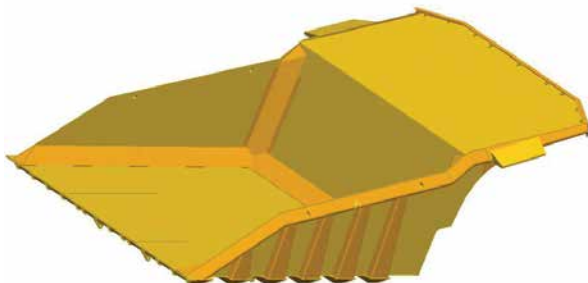
BODY OPTIONS

In addition to the new High Performance body, the 793F can be configured with our traditional body options, which are also specifically designed to work with the Cat frame for superior structural performance. Bodies can also be customized with options like tail extensions, sideboards and application-specific liners, which help to maintain rated payload, reduce spillage and improve hauling efficiencies.

MSD II



X BODY



GATELESS COAL BODY

