

2020 BUYERS' GUIDE

# GOVERNMENTAL SOLUTIONS

A CATERPILLAR PUBLICATION SERVING GOVERNMENTAL AGENCIES



## 2020 BUYERS' GUIDE

**CATERPILLAR®**





**MOTOR GRADERS:**  
**VERSATILITY PLUS**

**Steering wheel and levers now available on new motor graders**

With the introduction of two new Cat® Motor Graders, the 120 and 140, your agency now has the choice of working with joysticks or steering wheel and lever controls.

The Next Generation Cat 120 Motor Grader enables your agency to tailor the machine to best meet your preferences and applications. Choose between steering wheel and levers or joystick controls, tandem or all-wheel drive, and a range of scalable grade control technologies. The all-new cab provides enhanced visibility, seat options, and an information display screen.

The new 140 Motor Grader features integrated technology and performance with steering wheel and lever controls. O&O costs are reduced up to 20 percent with new filtration technology for extended fluid/filter maintenance intervals, grouped filters for easy access, reversing fan option for debris removal, and proven powertrain with ECO mode. Technology options are available on the new 140 for all customers and application needs:

- Cat GRADE technology
- Cat GRADE with Cross Slope
- Cat GRADE with Cross Slope Indicate
- Digital Blade Slope Meter
- Stable Blade

Visit our dealership or **Cat.com** for more information about the options available in the new 120 and 140 Motor Graders to meet your agency's preferences and applications.



	<b>120 Motor Grader</b>	<b>140 Motor Grader</b>
<b>Engine Model</b>	Cat C7.1 ACERT	Cat C9.3 ACERT
<b>Emissions</b>	Tier 4 Final	Tier 4 Final
<b>VHP Plus Range - Net</b>	140 hp - 167 hp	177 hp - 250 hp
<b>AWD Range - Net</b>	144 hp - 189 hp	176 hp - 270 hp
<b>Operating Weight – Typically Equipped</b>	35,067 lb	42,325 lb
<b>Operating Weight – AWD Typically Equipped</b>	36,731 lb	44,613 lb



# GOVERNMENTAL SOLUTIONS

2020 BUYERS' GUIDE

## 09

### SKID STEER LOADERS

New D3 Series are versatile machines



## 06

**DOZERS** new D5 matches performance and technology



## 08

**WHEEL LOADERS** deliver proven reliability and performance



## 15

**ATTACHMENTS** increase machine versatility



## CONTENTS

- 04** MOTOR GRADERS
- 05** TELEHANDLERS
- 06** DOZERS
- 07** BACKHOE LOADERS
- 08** WHEEL LOADERS
- 09** SKID STEER LOADERS
- 10** COMPACT TRACK LOADERS
- 11** HYDRAULIC EXCAVATORS
- 12** WHEELED EXCAVATORS
- 13** TRANSFER STATION MACHINES/MRF'S
- 14** LANDFILL MACHINES
- 15** ATTACHMENTS

*Governmental Solutions* is published by High Velocity Communications Inc. on behalf of Caterpillar and your Cat Dealer. Publisher, Tim O'Brien • Editor, John Rondy • Creative Director, Jay Blazek • Director of Client Services, Kelly Pemper. Every attempt has been made to ensure specifications are accurate. Because specifications are subject to change without notice, check with us, your Cat Dealer, for the latest equipment information. Some photography provided courtesy of Caterpillar Inc. High Velocity Communications Inc., 1720 Dolphin Drive, Suite D, Waukesha, WI 53186-1489. Phone (262) 544-6600. Please submit address corrections and changes via e-mail to: Kelly@HighVelocityCommunications.com. © 2020 High Velocity Communications Inc. Printed in the U.S.A. **Volume 20 Number 1 Buyers' Guide.** © 2020 Caterpillar. All Rights Reserved. CAT, CATERPILLAR, LET'S DO THE WORK, their respective logos, "Caterpillar Yellow", the "Power Edge" and Cat "Modern Hex" trade dress as well as corporate and product identity used herein, are trademarks of Caterpillar and may not be used without permission. VisionLink® is a trademark of Trimble Navigation Limited, registered in the United States and in other countries.

**[CAT.COM/GOVERNMENTAL](https://www.cat.com/governmental)**

Includes complete specifications for all machines. Check this out and more at **[Cat.com/governmental](https://www.cat.com/governmental)**.





# MOTOR GRADERS

120

140

150

160

14

- Net Power: 140 hp – 238 hp
- Operating Weights: 35,067 lb – 57,250 lb
- New for 2019 – protect your agency's investment with up to a nine-year/10,000-hour Premier warranty, available for new Cat® Motor Graders.
- Extended Protection Plan coverage is now available on Cat Motor Graders already in your fleet. A two-year/2,000-hour Premier extension is offered for machines seven years old and newer.
- Stable Blade is an industry-exclusive, patented technology that detects machine bounce, and automatically reduces machine speed as needed before the operator even notices the need. Once stabilized, the machine returns to its original speed without operator intervention.
- Serviceability features unique to Cat models help keep uptime high and performance strong. Cat Top Adjust Drawbar wear inserts provide easy access from the top of the drawbar. Low-cost, replaceable bronze wear inserts in the lift and centershift cylinder ends help maintain factory tightness.
- Technology packages are available at a wide variety of levels to help meet your agency's needs. Whether operators need a basic indication of slope or accessibility to equip your machine with 2D or 3D machine control and guidance systems, Cat Motor Graders can address the application need.
- Auto Articulation enables your agency's Cat motor graders to articulate automatically when steered. This improves performance and maneuverability in tight spaces.







# TELEHANDLERS

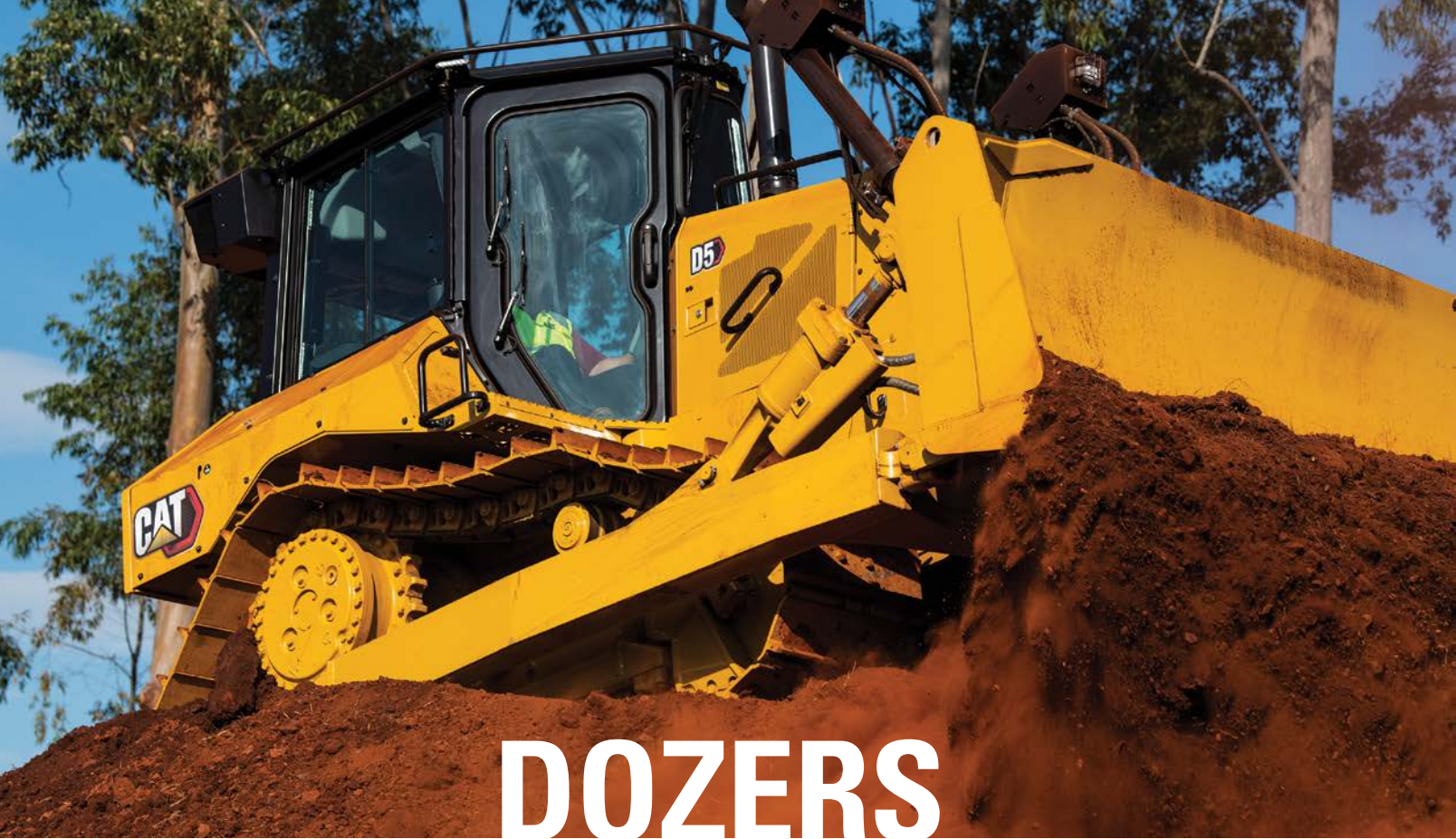
Superior design and advanced features combine to give Cat® Telehandlers the best all-around visibility and take the lead in lift and reach capability. Top performance, rugged construction deliver reliability and durability with low operating costs. Designed to meet the varying needs of construction applications, the comprehensive range of standard features and optional equipment extends the scope for wider application use.

- Gross Power: 74 hp to 142.1 hp
- Load Capacities: 5,500 lb to 12,000 lb
- Max Lift Height: 18.37 ft to 54.9 ft
- Excellent visibility and optional peripheral sensors and rearview camera, provide operator with confidence for safe, efficient operation
- Single-lever joystick contains all boom functions for easy operation
- Quiet, spacious operating environment with adjustable suspension seat and intuitive controls deliver operator comfort all shift long
- A variety of attachments are available to equip your telehandler for any task. Pallet forks, buckets, sweepers, pipe grapples and truss booms are just some of the options available, enabling you to tailor your machine to the jobs at hand in your city, county or township
- Ground level access to all daily service points and a side mounted engine make servicing simple

TH255C      TL642D  
TH357D      TL943D  
TH408D      TL1055D  
TH3510D     TL1255D  
TH514D







# DOZERS

D3K2     D5  
D4K2     D6T  
D5K2     D6  
D6K2     D6 XE  
D6N      D8T

## Small | D3K2, D4K2, D5K2

- Net Power: 80 hp – 104 hp
- Operating Weights: 17,465 lb – 20,313 lb
- Ideal for a variety of jobs, including clearing sites, sideslopes, backfilling, and final grade work.
- Traction Control reduces track slip and undercarriage wear for lower operating costs.
- Cat® GRADE with 3D is an optional, integrated 3D grade control system, enabling operators to improve grading efficiency, accuracy and productivity.

## Medium | D6K2, D6N, D5, D6T, D6, D6 XE

- Net Power: 130 hp – 238 hp
- Operating Weights: 29,258 lb – 57,441 lb
- Stable Blade Control complements operator input to automatically make instantaneous adjustments for smoother grading results with less effort.
- The D6N/D6T Waste Handler packages feature specialized guarding, striker bar, and seals to protect the machine from debris and provide longer wear life.
- Cat GRADE with Slope Assist is standard on D6K2/D6N/D6T and helps operators more easily achieve the required main-fall and slope orientation of the blade. GRADE with 3D is optional on all models.

## Large | D8T

- Net Power: 312 hp
- Operating Weight: 86,900 lb
- The D8T's standard Operator Presence detection system enables the machine to idle when the operator isn't seated, but locks out the powertrain and front implements to prevent unintentional movement.
- GRADE with 3D, optional on all models, is engineered specifically for Cat Dozers and fully integrated at the factory, enabling the system to work seamlessly with other features to hit grade specifications and optimize blade loads.







# BACKHOE LOADERS

- Net Power: 68 hp – 131 hp
- Digging Depths: 14.3 ft – 17.2 ft
- Operating Weights: 14,035 lb – 24,039 lb
- Powerful, load-sensing hydraulic systems provide excellent response for improved hoe and loader productivity and greater bucket breakout force.
- Spacious operator station with machine controls at operator's fingertips and multiple adjustments to keep the operator comfortable and productive.
- Selectable Power Management Modes not only save fuel, but maintain machine performance.
- The new 440 features a 25 percent backhoe lifting improvement compared to the 430F2. The redesigned single tilt loader arms provide parallel lift and versatility in a multitude of applications.
- The new 450 increases backhoe lifting capacity by 15 percent over the 450F, and introduces an all-new cab for improved operator comfort.
- Industry-leading versatility with an integrated toolcarrier and hydraulic coupler provides increased loader performance over the single tilt loader, as well as parallel lift.

415F2 IL  
415F2  
416F2  
420F2/420F2 IT  
430F2  
440  
450







# WHEEL LOADERS

903D	950M
906M	962M
907M	966M
908M	966M XE
910M	972M
914M	972M XE
918M	980M
926M	982M
930M	986K
938M	988K
950 GC	988K XE

## Compact | 903D, 906M, 907M, 908M, 910M, 914M

- Net Power: 40 hp to 97 hp
- Operating Weights: 9,414 lb to 19,219 lb
- Skid steer loader-style coupler on the 903D, 906M, 907M and 908M enables use of Cat® Skid Steer Loader attachments for increased versatility.

## Small/Medium | 918M, 926M, 930M, 938M, 950 GC, 950M, 962M, 966M, 966M XE

- Net Power: 113 hp – 298 hp
- Operating Weights: 20,874 lb – 51,176 lb
- The new 950 GC provides proven Cat reliability and performance to match any application.
- Load-sensing hydraulics, higher dump clearance and rear-view camera are standard on the 950 GC.
- M Series wheel loaders are powered by U.S. EPA Tier 4 Final ACERT engines
- Fuel efficiency on all M Series machines is best in class.
- XE advanced powertrain technology, available on the 966 model, delivers 25 percent lower fuel consumption compared to traditional powertrains.
- Optional Cat Production Measurement and VisionLink® enable easy access to machine data including bucket payload, fuel consumption, engine idle time and operating hours.

## Medium/Large | 972M, 972M XE, 980M, 982M, 986K, 988K, 988K XE

- Net Power: 299 hp – 541 hp
- Operating Weights: 54,871 lb – 116,362 lb
- The new 988K XE is the first Cat Wheel Loader featuring a high-efficiency electric drive system, which improves overall efficiency by 25 percent.
- 982M is a two-pass match for superior productivity, loading typical on-highway trucks.
- The 972M Aggregate Package is a three-pass match with typical on-highway trucks.





**D3**  
SERIES

# SKID STEER LOADERS

- Net Power: 65.8 hp – 106 hp
- Rated Operating Capacities: 1,550 lb – 3,700 lb
- Broad range of performance-matched Cat® Work Tool Attachments make Cat Skid Steer Loaders the most versatile machines on your worksites.
- Speed Sensitive Ride Control option assures an even smoother ride with better material retention.
- Available high-flow, high-pressure hydraulic systems efficiently run even the most power-hungry attachments.
- Multiple control options are available on D3 Series machines: traditional ISO pattern controls, H-pattern controls, and hand-and-foot controls.
- Available Advanced Display provides integrated rear-view camera and enables on-screen machine performance adjustments.

226D3    246D3  
232D3    262D3  
236D3    272D3  
242D3    272D3 XE

**NEW TO THE  
D3 SERIES**

- Increased door opening angle (up to 40% wider) for easier entry and exit
- Wider spaced joystick pods deliver an additional 3 inches of space for increased operator comfort.
- Smart Technology enables the machine to recognize when a Smart Attachment is connected, tailoring the existing machine controls to the needs of the connected attachment





**D3**  
SERIES



# COMPACT TRACK LOADERS

239D3    289D3  
249D3    299D3  
259D3    299D3 XE  
279D3

## Compact Track Loaders | 239D3, 249D3, 259D3, 279D3, 289D3, 299D3, 299D3 XE

- Net Power: 65.8 hp – 106 hp
- Rated Operating Capacities: 1,530 lb – 3,560 lb / 35 percent tipping load
- Standard, fully independent torsion axle suspension and Speed Sensitive Ride Control option assure a smoother ride and better material retention.
- High-flow, high-pressure hydraulic systems are available to maximize attachment performance.
- The Dual direction self-leveling, return-to-dig, and work tool positioner features automate machine functions to help with repetitive tasks like grading, digging, and loading.
- Industry-leading optional sealed and pressurized cab provides a cleaner, quieter work environment.
- Available high-back, heated, air-ride seats include seat-mounted, adjustable joystick controls.
- Available Bar Tread style rubber tracks provides a smoother ride, lower ground disturbance, and improved traction in mud or snow.
- Multiple control options are available on D Series machines: traditional ISO pattern controls, H-pattern controls, and hand-and-foot controls.
- Available Advanced Display provides integrated rear-view camera and enables on-screen machine performance adjustments.
- Increased door opening angle (up to 40% wider) for easier entry and exit
- Wider spaced joystick pods deliver an additional 3 inches of space for increased operator comfort.
- Smart Technology enables the machine to recognize when a Smart Attachment is connected, tailoring the existing machine controls to the needs of the connected attachment

**NEW TO THE  
D3 SERIES**

*Land Management and Debris Management packages available for demanding vegetation-management applications, such as mulching, brush cutting, vegetation control and mowing.*







# HYDRAULIC EXCAVATORS

## Mini | 300.9D, 301.5, 301.7 CR, 301.8, 302 CR, 302.7D CR, 303E CR, 303.5E2 CR, 304E2 CR, 305E2 CR, 306 CR, 307.5, 308 CR, 309 CR, 310

- Net Power: 13 hp – 70.3 hp
- Operating Weight: 2,170 lb – 22,447 lb
- All new models feature sealed and pressurized cab complete with camera-ready monitor, Bluetooth radio and phone, and Stick Steer with cruise control for easier, efficient operation.
- The new 309 CR High Flow includes undercarriage options and dedicated auxiliary pump for hydromechanical attachments.
- The new 310 features a long undercarriage, fixed boom, standard tail and 10,000-pound lifting capability.

## Small/Medium | 311F L, 313F L, 313F L GC, 315F L, 316F L, 318F L, 320 GC, 320, 323, 325, 326, 330 GC, 330, 335F L

- Net Power: 70 hp – 200 hp
- Operating Weight: 30,600 lb – 84,170 lb
- Seven Next Generation 20-ton size excavators—320 GC, 320, 323, 325, 326, 330 GC, and 330—increase operating efficiency, reduce fuel and maintenance costs, and improve operator comfort.
- Two new GC models—320 GC and 330 GC—are durable, low cost-per-hour excavators that balance productivity and operator comfort with reduced fuel consumption and maintenance.
- Cat® Grade and Slope and Cat GRADE with ASSIST help your agency optimize grading efficiency and achieve consistent grades and slopes with more precision.

300.9D	311F L
301.5	313F L
301.7 CR	313F L GC
301.8	315F L
302 CR	316F L
302.7D CR	318F L
303E CR	320 GC
303.5E2 CR	320
304E2 CR	323
305E2 CR	325
305.5E2 CR	326
306 CR	330 GC
307.5	330
308 CR	335F L
309 CR	
310	





# WHEELED EXCAVATORS

M314F  
M315F  
M316F  
M317F  
M318F  
M320F  
M322F

- Net Power: 141 hp – 169 hp
- Operating Weight: 31,658 lb – 49,229 lb
- To reduce operator fatigue, F Series machines feature an automatic system that locks the axle-oscillation function and sets the service brakes to prepare for digging.
- The versatility and mobility of wheeled excavators enable your agency to complete jobs in less time, using fewer machines.
- With a Tool Control System, you can pre-program hydraulic flow and pressure for up to 10 different attachments.
- Standard rear-view and side-view cameras help provide a clear, all-around view.
- The compact radius M315F and M317F increases fleet versatility and enables access to restricted-radius projects such as road construction and work on small jobsites.







# TRANSFER STATION & MRF MACHINES

## Material Handlers | MH3022, MH3024, MH3026

- Net Power: 169 hp
- Operating Weight: 48,094 lb – 57,651 lb
- The MH3022 is an agile solution for jobs with space constraints, providing the necessary reach for tasks such as indoor sorting and waste handling.
- The MH3024 features optimum reach with its long MH front linkage and a choice of undercarriage configurations to complete jobs like waste handling, recycling and bulk-material handling.
- The MH3026 is the best choice if work requires greater lifting capacities and a larger working envelope.
- All models feature continuous top- and side-plate construction throughout boom and stick for greater durability.

MH3022	962M
MH3024	966M
MH3026	966M XE
926M	972M
930M	972M XE
938M	980M
950M	

## Small & Medium Wheel Loaders | 926M, 930M, 938M, 950M, 962M, 966M, 966M XE, 972M, 972M XE, 980M

- Net Power: 153 hp – 386 hp
- Operating Weight: 28,770 lb – 66,318 lb
- All M Series machines feature deep system integration, which reduces emissions and improves performance and fuel economy.
- Flexport molded and Brawler “press-on” solid tires prevent unscheduled downtime, while increasing productivity.
- Three specially designed waste buckets handle different waste applications.
- Waste-handling package including: heavy guarding, special radiator, reversing fan and engine and cab pre-cleaners—improves uptime, reliability and operator comfort.







# LANDFILL MACHINES

D6K2	621K
D6N	623K
D5	627K
D6T	637K
D6	725C2
D6 XE	730
D8T	730 EJ
D9T	735
816K	740 GC
826K	740 EJ
836K	745

## Dozers | D6K2 D6N, D5, D6T, D6, D6 XE, D8T, D9T

- Net Power: 130 hp – 436 hp
- Operating Weight: 29,258 lb – 106,618 lb
- Waste handler packages help protect machines from damage caused by debris.
- Landfill blades and center-hole track shoes optimize waste handler performance.
- Insulated Clean Emissions Module and thermal shields provide a high level of thermal protection.

## Landfill Compactors | 816K, 826K, 836K

- Gross Power: 284 hp – 562 hp
- Operating Weight: 56,899 lb – 123,319 lb
- Comprehensive guarding includes the Cat® Axle Guard system, which protects final drives and wheel rims.
- Cat wheels and tips maximize performance and compaction. Choose from paddle tips, plus tips, combination tips and diamond tips.
- A variety of blades—Straight, Semi U and U—helps meet diverse cover-material-spreading requirements.

## Scrapers | 621K, 623K, 627K, 637K

- 407 hp – 570 hp for tractors (+290 hp for rear engine on tandem models)
- Scraper Capacity: 24 – 34 yd<sup>3</sup> (heaped)
- The K Series steering system requires significantly less effort, which reduces operator fatigue and improves efficiency.
- Ground Speed Control enables the operator to set the desired top speed, and the machine will find the gear that works best for the engine and transmission, resulting in a lower engine load factor and reduced fuel burn.

## Articulated Trucks | 725C2, 730, 730 EJ, 735, 740 GC, 740 EJ, 745

- Net Power: 314 hp – 504 hp
- Rated Payload: 26.5 tons – 45.2 tons
- Articulated trucks are well-suited for placing cover soil. The 730 EJ and 740 EJ feature ejector bodies, which are safer and provide clean load ejection on-the-go.
- All models, with the exception of the 725C2, feature a completely re-engineered cab for improved comfort and ease of operation. This includes Assisted Hoist Control and Cat Detect with Stability Assist system. The quieter cab design lowers inside sound levels by 7 dB.







# STRETCH YOUR BUDGET DOLLARS

## INCREASE MACHINE VERSATILITY WITH CAT® ATTACHMENTS

Agency fleet efficiency is improved by pairing the right attachments with the right machines in your fleet. Attachments enable one machine to perform the work of many specialty machines, thereby stretching your equipment capabilities without stretching your available budget funds.

### Cat Attachments Include:

- Augers
- Backhoes
- Bale Handlers
- Blades
- Brooms
- Brushcutters
- Buckets
- Cold Planers
- Compactors
- Couplers
- Cutters
- Forks
- Grapples
- Hammers
- Lifting Hooks
- Material Handling Arms
- Mixing Buckets
- Mulchers
- Multi Processors
- Plows
- Pulverizers
- Rakes
- Rippers
- Scarifiers
- Shears
- Side Discharge Buckets
- Snow Blowers
- Snow Plows and Pushes
- Stump Grinders
- Thumbs
- Tillers
- Trenchers
- Truss Booms
- Wheel Saws
- Winches



*Consult the equipment experts at our dealership to learn more about the best attachments for your fleet.*





110

## NOW AVAILABLE! 9-YEAR TERMS ON CAT® MOTOR GRADERS

### OWN AND OPERATE EQUIPMENT FOR LESS

We understand the unique needs of your business. Now through April 30, 2020, Governmental customers can spread out acquisition costs of owning and operating a new Cat® Motor Grader over a longer period with our industry-leading 108-month Lease Purchase option. Best of all, our quick turnaround times can help you get equipment working faster. Contact our dealership for more information.

Offer good for qualifying customers from July 1, 2019 to April 30, 2020 on select new motor grader models at participating Cat dealers. Not all buyers will qualify. Financing is subject to credit application and approval through Cat Financial. Financing offer is available to qualifying governmental customers in the USA only. Contract term is up-to but not exceeding 108-months. Financing offer is based on a monthly payment frequency on a governmental lease purchase contract only with no skips. Governmental operating leases do not qualify. See your participating Cat dealer for details. Terms subject to change. Additional terms and conditions may apply.

© 2020 Caterpillar. All Rights Reserved. CAT, CATERPILLAR, LET'S DO THE WORK, their respective logos, "Caterpillar Yellow", the "Power Edge" and Cat "Modern Hex" trade dress as well as corporate and product identity used herein, are trademarks of Caterpillar and may not be used without permission.



## SAVE TIME AND MONEY

Caterpillar is pleased to make our equipment available through two cooperative purchasing contracts: Sourcewell and OMNIA Partners.

Get the assets you need to be more successful when you buy Cat® products with one of these agreements:

### SOURCEWELL CONTRACT #032119

New and used equipment, parts, service and rental

### OMNIA PARTNERS CONTRACT #161534

New and used equipment, parts, service and rental

Our dealership can help determine which contract is right for you and can also provide information about state and local cooperative purchasing options.

Bookmark the following web page to learn more:

[Cat.com/Governmental](https://www.cat.com/Governmental)

