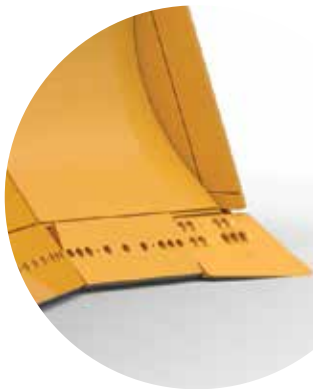




CAT BLADES: THE IDEAL MATCH FOR CAT DOZERS

Decades of dozer research and development have made Caterpillar the leader in blade technology. Cat blades are designed for loadability and constructed of high-tensile strength materials to produce big numbers over a long life.

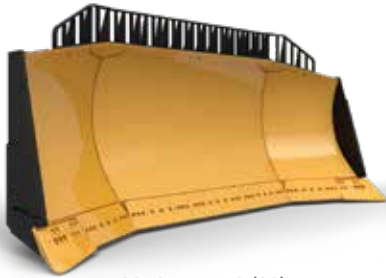
- + Optimal heel clearance and sharp cutting edge angle, which make the blade more aggressive in tough material
- + Superior loadability due to heavy moldboard construction and bolt-on hardened cutting edges and end bits
- + Ability to resist torsional bending and distortion
- + Material thickness chosen specifically to increase wear resistance and dozing effectiveness — without sacrificing machine balance or performance



Easier blade loading in hard-to-penetrate materials

Cat blades are designed with the optimal heel clearance. The D11 features a 29.3° interior angle between the back bottom of the blade and the ground. This clearance angle allows the blade to better penetrate and load.

BLADE OPTIONS for the D11



Universal (U)



Semi-Universal (SU)



Carrydozer (CD)

SPECIALTY BLADES

Work-tool options are available for applications requiring high-capacity blades for light materials.

- + Coal Blades
- + Reclamation Blades

REAR ATTACHMENTS



Single-shank Ripper



Multi-shank Ripper

SPECIALTY ATTACHMENTS

- + Multi-shank Leach Pad Ripper
- + Multi-shank Coal Ripper (five shank)
- + Counterweight
- + Rear Drawbar with Counterweight