



323

Hydraulic Excavator

Technical Specifications

Configurations and features may vary by region. Please consult your Cat® dealer for availability in your area.

Table of Contents

Specifications	2
Engine	2
Swing Mechanism	2
Weights	2
Track	2
Drive	2
Hydraulic System	2
Service Refill Capacities	2
Standards	2
Sound Performance	2
Operating Weights and Ground Pressures	3
Major Component Weights	3
Dimensions	4
Working Ranges	5
Reach Boom Lift Capacities – Counterweight: 5.4 mt (6 t)	6
Bucket Specifications and Compatibility	8
Attachments Offering Guide	9
Standard and Optional Equipment	11
Dealer Installed Kit and Attachments	13
Cab Options	14

323 Hydraulic Excavator Specifications

Engine

Engine Model	Cat® C7.1	
Engine Power (ISO 9249)	117 kW	157 hp
Engine Power (ISO 14396)	118 kW	158 hp
Bore	105 mm	4 in
Stroke	135 mm	5 in
Displacement	7.01 L	428 in ³

- The 323 meets Brazil MAR-1 emission standards, equivalent to U.S. EPA Tier 3.
- Recommended for use up to 4500 m (14,760 ft) altitude with engine power derate above 3000 m (9,840 ft).
- Net power advertised is the power available at the flywheel when the engine is equipped with fan, air cleaner, muffler and alternator.
- Rating at 1,800 rpm.

Swing Mechanism

Swing Speed	11.3 rpm	
Maximum Swing Torque	82 kN·m	60,300 lbf·ft

Weights

Operating Weight	24 600 kg	54,200 lb
------------------	-----------	-----------

- Long undercarriage, HD Reach boom, HD R2.9 (9'6") stick, 1.19 m³ (1.56 yd³) HD bucket and 700 mm (28") HD triple grouser shoes, 5.4 mt (6 t) counterweight.

Track

Standard Track Shoes Width	700 mm	28 in
Number of Shoes (each side)	49	
Number of Track Rollers (each side)	8	
Number of Carrier Rollers (each side)	2	

Drive

Maximum Gradeability	35°/70%	
Maximum Travel Speed	5.7 km/h	3.5 mph
Maximum Drawbar Pull	203 kN	45,614 lbf

Hydraulic System

Main System – Maximum Flow (Implement)	429 L/min (215 × 2 pumps)	113 gal/min (57 × 2 pumps)
Swing System – Maximum Flow	No swing pump	
Maximum Pressure – Equipment – Normal	35 000 kPa	5,075 psi
Maximum Pressure – Equipment – Lift Mode	38 000 kPa	5,510 psi
Maximum Pressure – Travel	34 300 kPa	4,974 psi
Maximum Pressure – Swing	27 500 kPa	3,998 psi
Boom Cylinder – Bore	120 mm	5 in
Boom Cylinder – Stroke	1260 mm	50 in
Stick Cylinder – Bore	140 mm	6 in
Stick Cylinder – Stroke	1504 mm	59 in
Bucket Cylinder – Bore	120 mm	5 in
Bucket Cylinder – Stroke	1104 mm	43 in

Service Refill Capacities

Fuel Tank Capacity	345 L	86.6 gal
Cooling System	25 L	6.6 gal
Engine Oil	25 L	6.6 gal
Swing Drive (each)	12 L	3.2 gal
Final Drive (each)	5 L	1.3 gal
Hydraulic System (including tank)	234 L	61.8 gal
Hydraulic Tank	115 L	30.4 gal

Standards

Brakes	ISO 10265:2008
Cab/ROPS	ISO 12117-2:2008
Cab	ISO 10262-1:1998 Level 1
FOGS (optional)	ISO 10262-2:1998 Level II

Sound Performance

ISO 6395:2008 (external)	100 dB(A)
ISO 6396:2008 (inside cab)	70 dB(A)

- Hearing protection may be needed when operating with an open operator station and cab (when not properly maintained or doors/windows open) for extended periods or in a noisy environment.

323 Hydraulic Excavator Specifications

Operating Weights and Ground Pressures

	700 mm (28") Triple Grouser Shoes				600 mm (24") Double Grouser Shoes			
	Weight		Ground Pressure		Weight		Ground Pressure	
	kg	lb	kPa	psi	kg	lb	kPa	psi
5.4 mt (6 t) Counterweight + Long Undercarriage Base Machine								
HD Reach Boom + HD R2.9 (9'6") Stick + 1.19 m ³ (1.56 yd ³) HD Bucket	24 600	54,200	43.9	6.4	24 200	53,400	38.2	5.5

All operating weights include a 90% fuel tank with 75 kg (165 lb) operator.

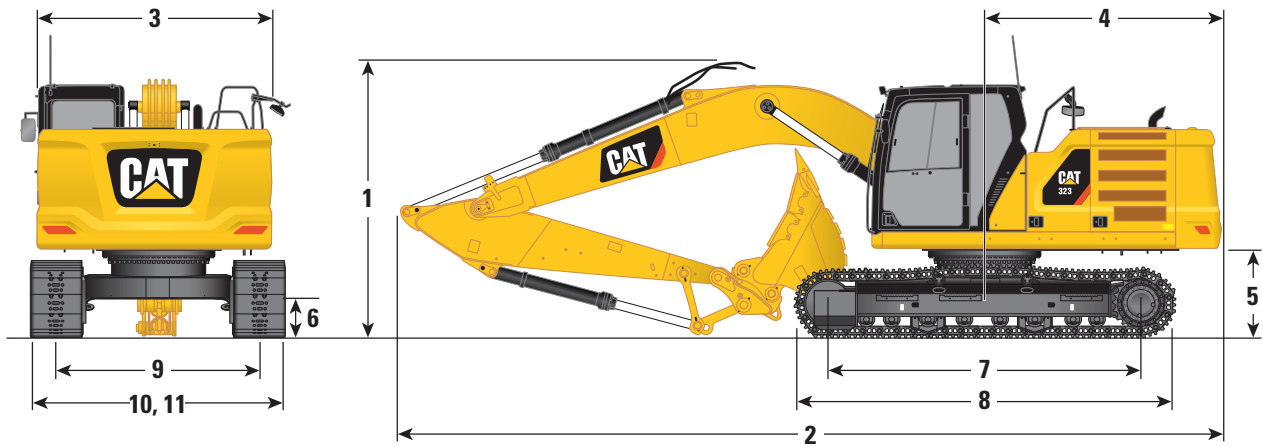
Major Component Weights

	kg	lb
Base Machine (with 5.4 mt [6 t] counterweight, HD swing frame, HD base frame with SD track rollers and standard carrier rollers for long undercarriage, with boom cylinder – does not include 90% fuel and 75 kg [165 lb] operator)	16 400	36,100
Track Shoes:		
700 mm (28") Width, 12.5 mm (0.49") Thick Triple Grouser HD Track Shoes	3490	7,700
600 mm (24") Width, 13 mm (0.51") Thick Double Grouser Track Shoes	3080	6,800
Boom Cylinders	340	700
Weight of 90% Fuel Tank and 75 kg (165 lb) Operator	310	700
Counterweight:		
5.4 mt (6 t) Counterweight	5400	11,900
Swing Frame:		
HD Swing Frame	2090	4,600
Long Undercarriage:		
HD Base Frame with SD Track Rollers and Standard Carrier Rollers	4470	9,900
SD Base Frame with SD Track Rollers and SD Carrier Rollers	4676	10,300
Booms (including lines, pins, stick cylinder):		
HD Reach Boom (5.7 m/18'8")	2010	4,400
Sticks (including lines, pins, bucket cylinder, bucket linkage):		
HD Reach Stick (R2.9B1/9'6")	1160	2,600
HD Reach Stick (R2.5B1/8'2")	1150	2,500
Bucket (without linkage):		
1.19 m ³ (1.56 yd ³) HD	930	2,050
1.40 m ³ (1.83 yd ³) HDV	1012	2,230

323 Hydraulic Excavator Specifications

Dimensions

All dimensions are approximate and may vary depending on bucket selection.



Boom Options

HD Reach Boom
5.7 m (18'8")

Stick Options

HD Reach Sticks

R2.9B1 (9'6")

R2.5B1 (8'2")

1 Machine Height:

Top of Cab Height	2960 mm	9'9"	2960 mm	9'9"
Top of FOGS Height	3100 mm	10'2"	3100 mm	10'2"
Handrails Height	2950 mm	9'8"	2950 mm	9'8"
With Boom/Stick/Bucket Installed	3160 mm	10'4"	3160 mm	10'4"
With Boom/Stick Installed	2910 mm	9'7"	2910 mm	9'7"
With Boom Installed	2480 mm	8'2"	2480 mm	8'2"

2 Machine Length:

With Boom/Stick/Bucket Installed	9530 mm	31'3"	9530 mm	31'3"
With Boom/Stick Installed	9500 mm	31'2"	9500 mm	31'2"
With Boom Installed	8450 mm	27'9"	8450 mm	27'9"

3 Upperframe Width without Walkways

	2780 mm	9'1"	2780 mm	9'1"
--	---------	------	---------	------

4 Tail Swing Radius

	2830 mm	9'3"	2830 mm	9'3"
--	---------	------	---------	------

5 Counterweight Clearance

	1050 mm	3'5"	1050 mm	3'5"
--	---------	------	---------	------

6 Ground Clearance

	470 mm	1'7"	470 mm	1'7"
--	--------	------	--------	------

7 Track Length – Length to Center of Rollers

	3650 mm	12'0"	3650 mm	12'0"
--	---------	-------	---------	-------

8 Overall Track Length

	4450 mm	14'7"	4450 mm	14'7"
--	---------	-------	---------	-------

9 Track Gauge – Extended

	2380 mm	7'9"	2380 mm	7'9"
--	---------	------	---------	------

10 Track Width:

600 mm (24") Shoes	2980 mm	9'8"	2980 mm	9'8"
700 mm (28") Shoes	3080 mm	10'1"	3080 mm	10'1"

11 Undercarriage Width (with steps/without steps):

600 mm (24") Shoes	2980 mm	9'8"	2980 mm	9'8"
700 mm (28") Shoes	3080 mm	10'1"	3080 mm	10'1"

Bucket Type

HD

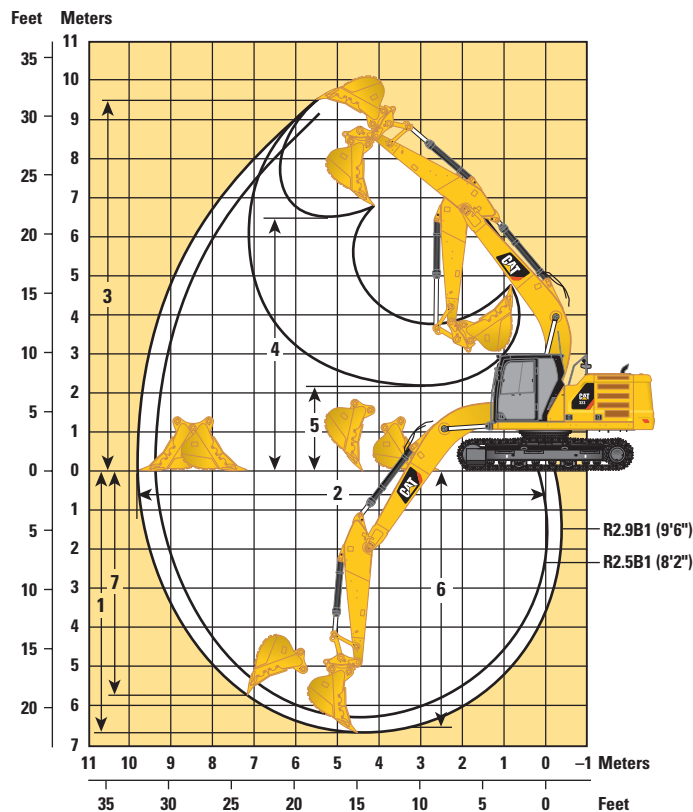
HD

Bucket Capacity	1.19 m ³	1.56 yd ³	1.19 m ³	1.56 yd ³
Bucket Tip Radius	1570 mm	5'2"	1570 mm	5'2"

323 Hydraulic Excavator Specifications

Working Ranges

All dimensions are approximate and may vary depending on bucket selection.



Boom Options

HD Reach Boom
5.7 m (18'8")

Stick Options

HD Reach Sticks

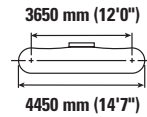
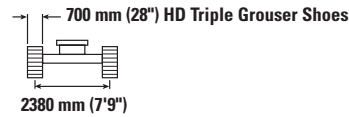
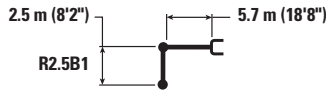
R2.9B1 (9'6")

R2.5B1 (8'2")

	R2.9B1 (9'6")		R2.5B1 (8'2")	
1 Maximum Digging Depth	6730 mm	22'1"	6310 mm	
2 Maximum Reach at Ground Line	9870 mm	32'4"	9470 mm	
3 Maximum Cutting Height	9450 mm	31'0"	9250 mm	
4 Maximum Loading Height	6480 mm	21'3"	6280 mm	
5 Minimum Loading Height	2160 mm	7'1"	2580 mm	
6 Maximum Depth Cut for 2440 mm (8'0") Level Bottom	6560 mm	21'6"	6120 mm	
7 Maximum Vertical Wall Digging Depth	5740 mm	18'9"	5340 mm	
Bucket Digging Force (ISO)	140 kN	31,505 lbf	140 kN	
Stick Digging Force (ISO)	107 kN	23,962 lbf	118 kN	
Bucket Type	HD		HD	
Bucket Capacity	1.19 m ³	1.56 yd ³	1.19 m ³	1.56 yd ³
Bucket Tip Radius	1570 mm	5'2"	1570 mm	5'2"

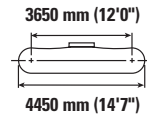
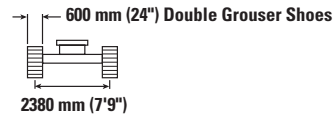
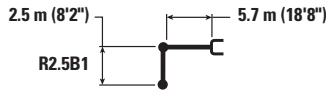
323 Hydraulic Excavator Specifications

Reach Boom Lift Capacities – Counterweight: 5.4 mt (6 t) – without Bucket – Heavy Lift: On



Reach Boom	3000 mm/120 in		4500 mm/180 in		6000 mm/240 in		7500 mm/300 in		3650 mm (12'0") 4450 mm (14'7")		mm in
	kg lb	kg lb	kg lb	kg lb	kg lb	kg lb	kg lb	kg lb	kg lb	kg lb	
7500 mm 300 in									*5100 *11,350	*5100 *11,350	5600 220
6000 mm 240 in					*5750 *12,600	*5750 *12,600			*4700 *10,350	*4700 *10,350	6830 270
4500 mm 180 in			*7250 *15,600	*7250 *15,600	*6200 *13,500	6200 13,350	*5150 4400		*4600 *10,100	4300 9,550	7570 300
3000 mm 120 in			*9100 *19,600	8950 19,350	*7000 *15,200	5950 12,800	*6100 *13,250	4300 9,250	*4700 *10,350	3950 8,650	7960 320
1500 mm 60 in			*10 750 *23,150	8450 18,200	*7850 *16,950	5700 12,250	6400 13,800	4200 9,000	*5000 *11,000	3800 8,350	8050 320
0 mm 0 in			*11 450 *24,750	8200 17,650	*8350 *18,100	5550 11,900	6350 13,650	4100 8,850	*5600 *12,350	3850 8,500	7860 310
-1500 mm -60 in		*11 950 *27,150	*11 300 *24,450	8150 17,550	*8400 *18,150	5500 11,800			6500 14,350	4200 9,300	7350 290
-3000 mm -120 in		*14 150 *30,650	*10 250 *22,200	8250 17,800	*7600 *16,200	5550 12,000			*6800 *14,900	5050 11,250	6470 260
-4500 mm -180 in			*7650 *16,000	*7650 *16,000					*6600 *14,500	*6600 *14,500	4980 200

Reach Boom Lift Capacities – Counterweight: 5.4 mt (6 t) – without Bucket – Heavy Lift: On



Reach Boom	3000 mm/120 in		4500 mm/180 in		6000 mm/240 in		7500 mm/300 in		3650 mm (12'0") 4450 mm (14'7")		mm in
	kg lb	kg lb	kg lb	kg lb	kg lb	kg lb	kg lb	kg lb	kg lb	kg lb	
7500 mm 300 in									*5100 *11,350	*5100 *11,350	5600 220
6000 mm 240 in					*5750 *12,600	*5750 *12,600			*4700 *10,350	*4700 *10,350	6830 270
4500 mm 180 in			*7250 *15,600	*7250 *15,600	*6200 *13,500	6100 13,150	*5150 4300		*4600 *10,100	4250 9,400	7570 300
3000 mm 120 in			*9100 *19,600	8850 19,050	*7000 *15,200	5850 12,600	*6100 *13,250	4250 9,100	*4700 *10,350	3850 8,500	7960 320
1500 mm 60 in			*10 750 *23,150	8350 17,950	*7850 *16,950	5600 12,100	6300 13,600	4150 8,850	*5000 *11,000	3750 8,200	8050 320
0 mm 0 in			*11 450 *24,750	8100 17,400	*8350 *18,100	5450 11,750	6250 13,400	4050 8,700	*5600 *12,350	3800 8,350	7860 310
-1500 mm -60 in		*11 950 *27,150	*11 300 *24,450	8050 17,300	*8400 *18,150	5400 11,600			6400 14,150	4150 9,150	7350 290
-3000 mm -120 in		*14 150 *30,650	*10 250 *22,200	8150 17,550	*7600 *16,200	5450 11,800			*6800 *14,900	5000 11,050	6470 260
-4500 mm -180 in			*7650 *16,000	*7650 *16,000					*6600 *14,500	*6600 *14,500	4980 200



ISO 10567



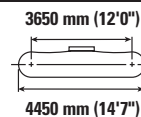
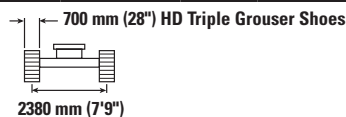
* Indicates that the load is limited by hydraulic lifting capacity rather than tipping load. The above loads are in compliance with hydraulic excavator lift capacity standard ISO 10567:2007. They do not exceed 87% of hydraulic lifting capacity or 75% of tipping load. Weight of all lifting accessories must be deducted from the above lifting capacities. Lifting capacities are based on the machine standing on a firm, uniform supporting surface. The use of a work tool attachment point to handle/lift objects, could affect the machine lift performance.

Lift capacity stays with ±5% for all available track shoes.

Always refer to the appropriate Operation and Maintenance Manual for specific product information.

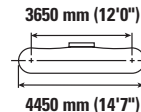
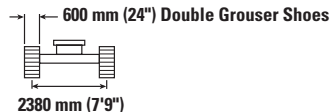
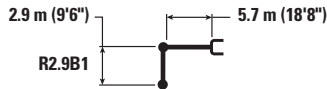
323 Hydraulic Excavator Specifications

Reach Boom Lift Capacities – Counterweight: 5.4 mt (6 t) – without Bucket – Heavy Lift: On



Reach	Unit	1500 mm/60 in		3000 mm/120 in		4500 mm/180 in		6000 mm/240 in		7500 mm/300 in		mm in		
		kg	lb	kg	lb	kg	lb	kg	lb	kg	lb	kg	lb	
7500 mm 300 in	kg lb							*4900	*4900			*4250 *9,400	*4250 *9,400	6150 240
6000 mm 240 in	kg lb							*5300 *11,650	*5300 *11,650			*3900 *8,650	*3900 *8,650	7290 290
4500 mm 180 in	kg lb							*5850 *12,700	*5850 *12,700	*5500 12,000	4400 9,450	*3850 *8,450	*3850 *8,450	7990 320
3000 mm 120 in	kg lb					*8550 *18,400	*8550 *18,400	*6700 *14,500	5950 12,850	*5850 *12,700	4300 9,250	*3950 *8,650	*3650 *8,050	8360 330
1500 mm 60 in	kg lb					*10 350 *22,250	8500 18,300	*7600 *16,450	5700 12,250	*6300 *13,650	4150 8,950	*4150 *9,150	3500 7,750	8450 340
0 mm 0 in	kg lb			*6550 *15,050	*6550 *15,050	*11 300 *24,450	8200 17,600	*8250 *17,850	5500 11,850	6300 13,500	4050 8,750	*4600 *10,150	3600 7,850	8260 330
-1500 mm -60 in	kg lb	*7000 *15,650	*7000 *15,650	*11 350 *25,750	*11 350 *25,750	*11 400 *24,700	8100 17,400	*8450 *18,250	5400 11,650	6250 13,450	4050 8,700	*5400 *11,950	3850 8,500	7780 310
-3000 mm -120 in	kg lb	*12 050 *27,000	*12 050 *27,000	*15 150 *32,750	*15 150 *32,750	*10 700 *23,050	8150 17,500	*7900 *17,050	5450 11,750			*6500 *14,250	4550 10,000	6950 280
-4500 mm -180 in	kg lb			*12 050 *25,750	*12 050 *25,750	*8650 *18,400	8350 18,050					*6550 *14,350	6200 13,950	5600 220

Reach Boom Lift Capacities – Counterweight: 5.4 mt (6 t) – without Bucket – Heavy Lift: On



Reach	Unit	1500 mm/60 in		3000 mm/120 in		4500 mm/180 in		6000 mm/240 in		7500 mm/300 in		mm in		
		kg	lb	kg	lb	kg	lb	kg	lb	kg	lb	kg	lb	
7500 mm 300 in	kg lb							*4900	*4900			*4250 *9,400	*4250 *9,400	6150 240
6000 mm 240 in	kg lb							*5300 *11,650	*5300 *11,650			*3900 *8,650	*3900 *8,650	7290 290
4500 mm 180 in	kg lb							*5850 *12,700	*5850 *12,700	*5500 12,000	4350 9,350	*3850 *8,450	*3850 *8,450	7990 320
3000 mm 120 in	kg lb					*8550 *18,400	*8550 *18,400	*6700 *14,500	5900 12,650	*5850 *12,700	4250 9,100	*3950 *8,650	*3600 *7,900	8360 330
1500 mm 60 in	kg lb					*10 350 *22,250	8350 18,050	*7600 *16,450	5600 12,100	*6300 13,550	4100 8,850	*4150 *9,150	3450 7,600	8450 340
0 mm 0 in	kg lb			*6550 *15,050	*6550 *15,050	*11 300 *24,450	8050 17,350	*8250 *17,850	5400 11,650	6200 13,300	4000 8,650	*4600 *10,150	3550 7,750	8260 330
-1500 mm -60 in	kg lb	*7000 *15,650	*7000 *15,650	*11 350 *25,750	*11 350 *25,750	*11 400 *24,700	7950 17,100	*8450 *18,200	5350 11,500	6150 13,250	4000 8,550	*5400 *11,950	3800 8,350	7780 310
-3000 mm -120 in	kg lb	*12 050 *27,000	*12 050 *27,000	*15 150 *32,750	*15 150 *32,750	*10 700 *23,050	8000 17,250	*7900 *17,050	5350 11,550			*6500 *14,250	4450 9,850	6950 280
-4500 mm -180 in	kg lb			*12 050 *25,750	*12 050 *25,750	*8650 *18,400	8250 17,800					*6550 *14,350	6100 13,750	5600 220



ISO 10567



* Indicates that the load is limited by hydraulic lifting capacity rather than tipping load. The above loads are in compliance with hydraulic excavator lift capacity standard ISO 10567:2007. They do not exceed 87% of hydraulic lifting capacity or 75% of tipping load. Weight of all lifting accessories must be deducted from the above lifting capacities. Lifting capacities are based on the machine standing on a firm, uniform supporting surface. The use of a work tool attachment point to handle/lift objects, could affect the machine lift performance.

Lift capacity stays with ±5% for all available track shoes.

Always refer to the appropriate Operation and Maintenance Manual for specific product information.

323 Hydraulic Excavator Specifications

Bucket Specifications and Compatibility

	Linkage	Width		Capacity		Weight		Fill	Counterweight		
		mm	in	m ³	yd ³	kg	lb		%	5.4 mt (6 t)	
										HD Reach Boom	
									HD R2.5 (8'2")	HD R2.9 (9'6")	
Pin-On (No Quick Coupler)											
Heavy Duty	B	1050	42	1.00	1.31	892	1,967	100	●	●	
	B	1200	48	1.19	1.56	928	2,046	100	●	●	
Heavy Duty Spade	B	1350	54	1.40	1.83	1025	2,260	100	●	X	
Severe Duty	B	1200	48	1.19	1.56	1038	2,289	90	●	●	
Severe Duty Spade	B	1200	48	1.20	1.57	1011	2,229	90	●	●	
Maximum load with pin-on (payload + bucket)								kg	3825	3555	
								lb	8,433	7,837	
	Linkage	Width		Capacity		Weight		Fill	Counterweight		
		mm	in	m ³	yd ³	kg	lb		%	5.4 mt (6 t)	
										HD Reach Boom	
									HD R2.5 (8'2")	HD R2.9 (9'6")	
With Cat Pin Grabber Coupler											
Heavy Duty	B	1050	42	1.00	1.31	892	1,967	100	●	●	
	B	1200	48	1.19	1.56	928	2,046	100	●	⊙	
Heavy Duty Spade	B	1350	54	1.40	1.83	1025	2,260	100	⊙	⊖	
Severe Duty	B	1200	48	1.19	1.56	1038	2,289	90	●	●	
Severe Duty Spade	B	1200	48	1.20	1.57	1011	2,229	90	●	●	
Maximum load with coupler (payload + bucket)								kg	3526	3248	
								lb	7,773	7,160	

The above loads are in compliance with hydraulic excavator standard EN474-5:2006+A3:2013, they do not exceed 87% of hydraulic lifting capacity or 75% of tipping capacity with front linkage fully extended at ground line with bucket curled.

Capacity based on ISO 7451:2007.

Bucket weight with General Duty tips.

Maximum Material Density:

- 2100 kg/m³ (3,500 lb/yd³)
- ⊙ 1800 kg/m³ (3,000 lb/yd³)
- ⊖ 1500 kg/m³ (2,500 lb/yd³)
- X Not Recommended

Caterpillar recommends using appropriate work tools to maximize the value customers receive from our products. Use of work tools, including buckets, which are outside of Caterpillar's recommendations or specifications for weight, dimensions, flows, pressures, etc. may result in less-than-optimal performance, including but not limited to reductions in production, stability, reliability, and component durability. Improper use of a work tool resulting in sweeping, prying, twisting and/or catching of heavy loads will reduce the life of the boom and stick.

323 Hydraulic Excavator Specifications

Attachments Offering Guide

PIN-ON ATTACHMENTS

Undercarriage		Long	
Counterweight		5.4 mt (6 t)	
Boom Type		HD Reach	
Stick Length		HD 2.5 m (8'2")	HD 2.9 m (9'7")
Hydraulic Hammers	H120 GC	✓	✓
	H120 GC Side-mount	✓	✓
	H120 GC S	✓	✓
	H120E S	✓	✓
	H130E S	✓	✓
Multi-Processors	MP318 CC Jaw	✓	✓
	MP318 D Jaw	✓	✓
	MP318 P Jaw	✓	✓
	MP318 S Jaw	✓	✓
	MP318 U Jaw	✓	✓
Pulverizers	P215	✓	✓
Demolition and Sorting Grapples	G315B	✓	✓
	G320B	✓	✓
Compactors (Vibratory Plate)	CVP110	✓	✓
Mobile Scrap and Demolition Shears	S3025	✓	✓
Orange Peel Grapples		✓	✓
Contractors' Grapples		✓	✓
Trash Grapples		✓	✓
Thumbs		✓	✓
Rakes		✓	✓
Rippers		✓	✓
Cat Pin Grabber Couplers		✓	✓

(continued on next page)

323 Hydraulic Excavator Specifications

Attachments Offering Guide *(continued)*

CAT PIN GRABBER COUPLER ATTACHMENTS

Undercarriage		Long	
Counterweight		5.4 mt (6 t)	
Boom Type		HD Reach	
Stick Length		HD 2.5 m (8'2")	HD 2.9 m (9'7")
Hydraulic Hammers	H120 GC	✓	✓
	H120 GC Side-mount	✓	✓
	H120 GC S	✓	✓
	H120E S	✓	✓
	H130E S	✓	✓
Multi-Processors	MP318 CC Jaw	✓	✓
	MP318 D Jaw	✓	✓
	MP318 P Jaw	✓	✓
	MP318 S Jaw	✓	✓
	MP318 U Jaw	✓	✓
Pulverizers	P215	✓	✓
Demolition and Sorting Grapples	G315B	✓	✓
	G320B	✓	✓
Compactors (Vibratory Plate)	CVP110	✓	✓
Mobile Scrap and Demolition Shears	S3025	✓	✓
Rakes		✓	✓
Rippers		✓	✓

BOOM-MOUNT ATTACHMENTS

Undercarriage		Long	
Counterweight		5.4 mt (6 t)	
Boom Type		HD Reach	
Mobile Scrap and Demolition Shears	S2050	✓	
	S3035	✓	

Standard and Optional Equipment

Standard and optional equipment may vary. Consult your Cat dealer for details.

	Standard	Optional		Standard	Optional
ENGINE			UNDERCARRIAGE AND STRUCTURES		
C7.1	✓		Tie-down points on base frame (ISO 15818:2017 compliant)	✓	
Three selectable power modes	✓		Track guiding guard, segmented two pieces	✓	
Automatic engine speed control	✓		Track guiding guard, full length		✓
Automatic engine idle shutdown	✓		Heavy-duty bottom guards	✓	
Work up to 3000 m (9,840 ft) above sea level without engine power de-rating	✓		Standard swivel guard	✓	
52° C (125° F) high-ambient cooling capacity	✓		Heavy-duty travel motor guards	✓	
Cold starting capability for -18° C (0° F)	✓		Grease lubricated track links	✓	
Double element air filter with integrated precleaner	✓		5400 kg (6 t) counterweight	✓	
Electric fuel priming pump	✓		HD swing frame	✓	
Reversible electric cooling fans	✓		HD swing bearing	✓	
Biodiesel capability up to B20	✓		HD base frame with SD track rollers and standard carrier rollers	✓	
HYDRAULIC SYSTEM			SD base frame with SD track rollers and SD carrier rollers for long undercarriage		✓
Boom and stick regeneration circuits	✓		Final drive with standard travel motor	✓	
Heavy lift configuration		✓	BOOMS, STICKS AND LINKAGES		
Electronic main control valve	✓		700 mm (28") HD triple grouser track shoes	✓	
Automatic warm up	✓		600 mm (24") double grouser track shoes		✓
Automatic two-speed travel	✓		5.7 m (18'8") HD Reach boom	✓	
Boom and stick drift reduction valve	✓		2.9 m (9'6") HD Reach stick	✓	
Element type main hydraulic filter	✓		2.5 m (8'2") HD Reach stick		✓
Slider joysticks	✓		Bucket linkage, B1-family with lifting eye	✓	
Tandem type electronic main pump	✓		ELECTRICAL SYSTEM		
Hammer return filter circuit		✓	1,000 CCA maintenance-free batteries (×2)	✓	
Combined flow/high pressure auxiliary circuit		✓	Centralized electrical disconnect switch	✓	
Quick coupler circuit for Cat Pin Grabber and CW Dedicated		✓	Programmable time-delay LED working lights	✓	
			LED chassis light, LH and RH boom lights, cab lights	✓	
			LED chassis light, LH and RH boom lights, cab lights with cover and rain protector – for use with 360° visibility		✓

(continued on next page)

323 Standard and Optional Equipment

Standard and Optional Equipment (continued)

Standard and optional equipment may vary. Consult your Cat dealer for details.

	Standard	Optional		Standard	Optional
CAT TECHNOLOGY			SERVICE AND MAINTENANCE		
Cat Product Link™	✓		Sampling ports for Scheduled Oil Sampling (S·O·S SM)	✓	
Work tool recognition	✓		QuickEvac™ maintenance ready		✓
Work tool tracking*	✓		Grouped location for engine oil and fuel filters	✓	
Laser catcher		✓	Ground-level second dipstick for engine oil	✓	
Cat GRADE with 2D and offset memory	✓		Remote flash	✓	
Cat GRADE with Advanced 2D		✓	SAFETY AND SECURITY		
Cat GRADE with 3D connectivity:		✓	Rearview camera and side RH mirror	✓	
– Virtual Reference Station**			360° visibility (must be used with 254 mm [10 in] monitor and cab light with cover)		✓
– Internet Base Service Station**			Neutral lever (lock out) for all controls	✓	
– Trimble Connected Community**			Anti-skid plate and countersunk bolts on service platform	✓	
Cat Assist:	✓		Ground-level accessible secondary engine shutoff switch in cab	✓	
– Grade Assist			Radiator screen		✓
– Boom Assist			RH handrail and hand hold (ISO 2867:2011 compliant)	✓	
– Bucket Assist			Travel alarm	✓	
– Swing Assist			Handholds inside radiator compartment		✓
– Lift Assist					
Cat PAYLOAD:	✓				
– Static weigh					
– Semiautomatic calibration					
– Payload/cycle information					
– USB reporting capability					
2D E-Fence:	✓				
– E-ceiling					
– E-floor					
– E-swing					
– E-wall					
– E-cab avoidance					
Auto hammer stop	✓				
Remote Services capability	✓				

*Paired with PL161 attachment locator.

**Subscription required.

Dealer Installed Kit and Attachments

Attachments may vary. Consult your Cat dealer for details.

CAB

- Radial lower wiper for 70/30 with washer (excluding Brazil)
- RH and LH electrical pedal for tool control
- Rain protector plus cab light cover (excluding Brazil)
- 75 mm (3") retractable seat belt
- Polycarbonate roof hatch kit (comfort cab only)

SAFETY AND SECURITY

- Bluetooth® key fob

ELECTRICAL

- Premium lighting package
- Jump start wiring (Brazil only)

GUARDS

- Side rubber bumper (excluding Brazil)
- Falling object guard system (not compatible with cab light cover, rain protector)
- Mesh guard full front (not compatible with cab light cover, rain protector)
- Mesh guard lower half front
- Full protecting vandalism guard (excluding Brazil)

323 Cab Options

Cab Options

	Comfort	Deluxe
ROPS, standard sound suppression	●	●
High-resolution 203 mm (8") LCD touchscreen monitor	●	●
High-resolution 254 mm (10") LCD touchscreen monitor	○	○
High-resolution 254 mm (10") LCD touchscreen monitor + additional monitor (for use with Cat GRADE with Advanced 2D or Cat GRADE with 3D)	○	○
Automatic bi-level air conditioner	●	●
Jog dial and shortcut keys for monitor control	●	●
Keyless push-to-start engine control	●	●
Height-adjustable console, three steps with tool	●	X
Height-adjustable console, infinite with no tool	X	●
Mechanically adjustable seat suspension	●	X
Heated seat with air-adjustable suspension	●	●
51 mm (2") seat belt	●	●
Fixed left side console	●	X
Tilt-up left-side console	X	●
Bluetooth integrated radio	●	X
Bluetooth integrated radio with USB ports	X	●
12V DC outlets	●	●
Document storage	●	●
Rear head storage net and lunchbox storage net	X	●
Cup and bottle holders	●	●
Openable two-piece front window	●	●
Upper radial wiper with washer	●	●
Parallel wiper with washer	X	●
Openable steel hatch	●	X
LED dome light	●	●
Floor welcome light	●	●
Roller front sunscreen	●	●
Roller rear sunscreen	○	○
Washable floor mat	●	●
Beacon ready	●	●

- Standard
- Optional
- X Not available



For more complete information on Cat products, dealer services, and industry solutions, visit us on the web at www.cat.com

© 2019 Caterpillar
All rights reserved

Materials and specifications are subject to change without notice. Featured machines in photos may include additional equipment. See your Cat dealer for available options.

CAT, CATERPILLAR, LET'S DO THE WORK, their respective logos, "Caterpillar Yellow," the "Power Edge" and Cat "Modern Hex" trade dress as well as corporate and product identity used herein, are trademarks of Caterpillar and may not be used without permission.

AEXQ2220-01 (12-2019)
Replaces AEXQ2220
Build Number: 07C
(South America/Brazil)

