

**YELLOWMARK™
HYDRAULIC CYLINDER
GROUPS, ASSEMBLIES
& RODS**

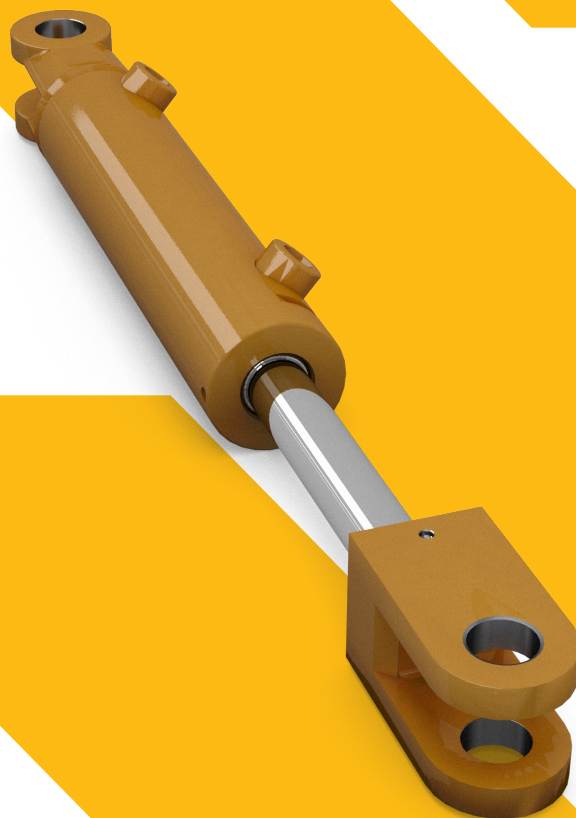
THE RIGHT FIT

FOR YOU,
YOUR MACHINE—
AND YOUR BUDGET

**No one understands
your machine like we do.**

Developed by Caterpillar and ready to buy from your local Cat® dealer, Yellowmark Hydraulic Cylinder Groups, Assemblies & Rods are made to give you a convenient, reliable solution at a lower cost.

Keeping your Cat machine's hydraulic system running reliably doesn't have to break your budget. Yellowmark hydraulic parts are an industry standard alternative from a brand you trust. Our full line of hydraulic repair and replacement parts are developed by Caterpillar to fit your small and medium-sized Cat construction equipment. Yellowmark hydraulic parts also fit your budget – balancing reliable performance with a lower upfront cost.



YELLOWMARK™
A Caterpillar Brand

YELLOWMARK™ HYDRAULIC CYLINDER GROUPS, ASSEMBLIES & RODS

Why choose Yellowmark Hydraulic Cylinder Groups, Assemblies & Rods?

- A reliable, industry standard option developed with construction customers in mind
- Backed with a 12-month Yellowmark parts warranty (see your dealer for complete warranty details)
- Off-the-shelf availability, no need to wait for rechroming or machining
- Broad line of Cat Seals available to support cylinder group reseals
- Parts have induction hardened rods with chrome plating
- Available through your Cat dealer

Positioning Comparisons for Hydraulic Cylinder Groups, Assemblies & Rods

HYDRAULIC CYLINDER GROUPS, ASSEMBLIES & RODS	YELLOWMARK	CAT REMAN	CAT GENUINE PARTS
BENEFIT	<ul style="list-style-type: none"> ▪ Superior value, quality and availability over locally manufactured rods ▪ Alternative for lower cost of repairs ▪ Replacement part with no option of rechroming or machining 	<ul style="list-style-type: none"> ▪ Lower owning and operating costs through core trade-in ▪ Immediate, off-the-shelf availability at a fraction of the new price ▪ Fast repair turnaround; no need to wait for rechroming or machining 	<ul style="list-style-type: none"> ▪ Longer rod and seal life ▪ Greater resistance to bending and denting ▪ Less risk of system contamination
ENGINEERING FEATURES	<ul style="list-style-type: none"> ▪ For general duty application ▪ Caterpillar engineering approved ▪ Built to Caterpillar specifications 	<ul style="list-style-type: none"> ▪ Same as new performance, quality and durability ▪ Includes all critical engineering changes & updates 	<ul style="list-style-type: none"> ▪ Same as factory fit ▪ Premium part ▪ Strongest rod-eye joint
WARRANTY	<ul style="list-style-type: none"> ▪ 12-month warranty with modified coverage 	<ul style="list-style-type: none"> ▪ 12-month warranty with industry-leading coverage 	<ul style="list-style-type: none"> ▪ 12-month warranty with industry-leading coverage
ROD BEARING	<ul style="list-style-type: none"> ▪ New bearing included in new rods 	<ul style="list-style-type: none"> ▪ New bearing included in new rods 	<ul style="list-style-type: none"> ▪ New bearing included in new rods
SURFACING	<ul style="list-style-type: none"> ▪ Hard-chromed plated ▪ Induction hardened ▪ Surface finish designed to work with Cat Seals 	<ul style="list-style-type: none"> ▪ Hard-chromed plated, up to 50% thicker than industry standard chromed bar ▪ Induction hardened ▪ Surface finish designed to work with Cat Seals 	<ul style="list-style-type: none"> ▪ Hard-chromed plated, up to 50% thicker than industry standard chromed bar ▪ Induction hardened ▪ Surface finish designed to work with Cat Seals
ROD-EYE WELD	<ul style="list-style-type: none"> ▪ Mechanical joint and welded 	<ul style="list-style-type: none"> ▪ Inertia friction welded 	<ul style="list-style-type: none"> ▪ Inertia friction welded
PRIMARY PURCHASE DRIVER(S)	Uncertain _____ OWNERSHIP _____ Longer Lower _____ UTILIZATION _____ Higher Sensitive _____ PRICE _____ Prefers Guaranteed		

For more information about Yellowmark and our full parts product line, see your Cat dealer or go to www.yellowmark.com.

