

CONSTRUCTION INDUSTRIES



We call it the GC-effect

The effect a new GC machine has on ownership,
on your work, on your business and on society



CONSTRUCTION INDUSTRIES



We call it the GC-effect

The effect a new GC machine has on ownership,
on your work, on your business and on society



SIMPLY RELIABLE



Durable, Reliable, Economical, Fuel Competitive

We call it the GC-effect

Introducing the new standard Cat® GC machines

950GC, 320GC, 330GC, 336GC, 345GC, 740GC & 140GC



CAT®

www.cat.com



Welcome to the *Construction Industries 2019 Buyers' Guide* showcasing the impressive lineup of Cat® products for construction. Images of our products at work and brief specifications for many new models are included along with the current machines in each product family.

This free Buyers' Guide is provided compliments of your dealership. Please

keep it handy for your reference throughout the year and be sure to contact us with any questions or if you would like more details about any of the machines you see here.

To learn more about fuel-efficient, quality-built Cat machines that use the latest technology to deliver greater productivity, reliability and longer service life, contact our dealership or visit cat.com

04 TELEHANDLERS

05 SKID STEER LOADERS /
COMPACT TRACK LOADERS

06 MICRO EXCAVATORS

07 MINI EXCAVATORS

08 SMALL EXCAVATORS

09 MEDIUM EXCAVATORS

10 LARGE EXCAVATORS

12 WHEELED EXCAVATORS

13 MATERIAL HANDLERS

14 MEDIUM DOZERS

15 LARGE DOZERS

16 COMPACT WHEEL LOADERS

17 SMALL WHEEL LOADERS

18 MEDIUM WHEEL LOADERS

19 LARGE WHEEL LOADERS

20 BACKHOE LOADERS

21 MOTOR GRADERS

22 WHEEL-TRACTOR SCRAPERS

23 SOIL COMPACTORS

24 ASPHALT PAVERS / ASPHALT
COMPACTION SOLUTIONS

25 COLD PLANERS / ROAD
RECLAIMERS

26 ARTICULATED TRUCKS

28 OFF-HIGHWAY TRUCKS

30 ATTACHMENTS

This magazine is published by Caterpillar AME and High Velocity Communications Inc. on behalf of your Cat dealer. Cat Managing Editors, Marie-Hélène Mileto and Diana Ochoero • Publisher, Tim O'Brien • Editor, John Rondy • Art Director, Eric Valk • Director of Client Services, Kelly Pemper. Every attempt has been made to ensure specifications are correct. Because specifications are subject to change without notice, check with us, your Cat dealer, for the latest information and available options. Some photography provided courtesy of Caterpillar Inc. Machines shown may include additional equipment. 2019 Caterpillar. All Rights Reserved. CAT, CATERPILLAR, LET'S DO THE WORK, their respective logos, "Caterpillar Yellow," the "Power Edge" and Cat "Modern Hex" trade dress as well as corporate and product identity used herein, are trademarks of Caterpillar and may not be used without permission. High Velocity Communications Inc., 1720 Dolphin Drive, Suite D, Waukesha, WI USA 53186-1489. Phone 262.544.6600. © 2019 High Velocity Communications Inc.

Machine specifications are subject to change without notice. For additional information please contact your dealership or visit cat.com



TH3510D

TELEHANDLERS

TH357D, TH408D, TH3510D, TH314D, TH417D

- Maximum Lift Capacity from – 3500 kg to 4000 kg
- Maximum Lift height – 7 m to 17 m
- In-cab frame level controls and added stabilizer strength combine with precise hydraulic response for safer machine operation.
- Easy ground level access to service check points.
- Limited slip differential, excellent ground clearance and permanent four-wheel drive enable excellent performance even on the most difficult terrain.
- Excellent visibility from cab.
- Dual-axle braking further improves safety for operators on steep gradients and in poor underfoot conditions (only for TH357D, TH408D, TH3510D).



TH408D



SKID STEER LOADERS AND COMPACT TRACK LOADERS

SSL – 216B3, 226B3, 232D, 236D, 242D, 246D, 262D
Gross power from 38 kW to 55.4 kW

CTL – 239D, 246D, 259D, 279D, 289D
Gross power from 50.1 kW to 55.4 kW

- Gross horsepower – 38 kW to 55.4 kW
- Sealed, pressurized cab for clean and quiet operation.
- Speed sensitive ride control for smoother ride and maximum load retention.
- The Cat exclusive electro-hydraulic system provides precise, responsive and effortless control.
- Continuous flow, creep mode, dual self-level and return maximize productivity and efficiency and reduce fatigue.
- Available both foot and hand or joystick controls.



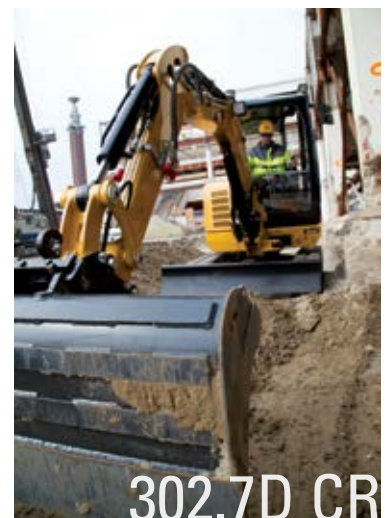


301.5

MICRO HYDRAULIC EXCAVATORS

300.9D, 302.7D CR, 301.5, 301.6, 301.7 CR, 301.8, 302 CR

- Designed with trailer transportation in mind.
- Extending undercarriage models balance stability with access into tight spaces.
- Compact radius models reduce the risk of damage and increase safety in restricted areas.
- Two-point machine lifting provides fast and safe handling.
- Sliding lower glass in front window system.
- Dozer float makes fast ground levelling easier to do.
- Excellent all-around ground level service access simplifies machine maintenance.
- Additional service access available for major service via the tilt-up canopy/cab available on the Next Generation 301.5, 301.6, 301.7 CR, 301.8, and 302 CR machines.
- First-to-the-industry offering cab air conditioning on the Next Generation 301.6, 301.8 and 302 CR cab machines.
- Equipped with Stick Steer on the Next Generation 301.5, 301.6, 301.7 CR, 301.8, and 302 CR machines.



302.7D CR

MINI HYDRAULIC EXCAVATORS

303.5E CR, 304E2 CR, 305.5E CR, 306E2, 307.5 (Legacy Model 307), 308 CR*, 308 CR VAB*, 309 CR VAB*, 310

* only for HRC markets

- Cat 'Power on Demand hydraulic system' maximizes fuel efficiency for all functions without loss of performance.
- Courtesy lighting guides the operator from his machine keeping him safe when leaving jobsite.
- Caterpillar's COMPASS monitor on the E and E2 series machines is easy to read and offers a variety of control options such as a built-in security code system, while the LCD color monitor on the Next Generation 307.5, 308 CR, 309 CR, and 310 is equipped with operator preferences, Bluetooth capability, and a Bluetooth key.
- Hydraulic flow control features, such as continuous and adjustable flow, increase attachment versatility.
- An Auto idle setting helps to reduce fuel consumption by switching down engine revs when the machine is not in use.
- Product Link™ Telematics is standard on all models enabling more effective fleet management.
- First-to-the-industry with Stick Steer on the Next Generation 307.5, 308 CR, 309 CR, and 310 machines.
- Dedicated auxiliary pump standard on the 309 CR ensures reliable flow to all hydraulic functions.



310



SMALL HYDRAULIC EXCAVATORS

313D2 L, 313F GC, 313F L GC, 318D2 L

- Net Power – 68 kW to 87 kW
- Operating Weights – 13700 kg to 17900 kg
- Powered by fuel-efficient engines and advanced hydraulic systems.
- Cat Connect Technology and a full range of Cat attachments help you complete the work easier and faster.
- Low-effort joystick controls, ergonomically designed cab with easy-to-reach controls and good visibility to reduce operator fatigue.





320 GC

MEDIUM HYDRAULIC EXCAVATORS

320, 320 GC, 323, 326D2 L / 326, 330 GC, 330

- Net Power – 108 kW to 195 kW
- Operating Weights – 20500 kg to 31300 kg
- Medium excavators combine versatility, performance and fuel economy.
- Next Generation medium excavators significantly reduce operating costs, with fuel consumption reduced by up to 25% and maintenance costs reduced by up to 20% over their D2 Series predecessors.
- 320 is the best seller in its size class. Well-balanced machine provides smooth, precise control.
- 320 GC provides the quality, safety and comfort you expect while delivering best-in-class owning and operating costs.
- 323 can be ordered with a 5.4 ton counterweight to add stability for operation of heavy work tools or heavy loads at extended reach.
- 320, 323 and 330 come standard with the most advanced ease-of-use features offered on machines this size: Grade, Assist and Payload.
- Cat® Grade is like having a ruler in the cab. Operator knows bucket depth at any point in time without need for manual grade checking.
- Cat® Grade with Assist takes this function to the next level by automating some of the front components' movements, reducing operator fatigue and improving fine grading applications.
- Cat® Payload accurately informs operators about the weight of each bucket load. Hit your truck loading target every time, no more, no less.



330 GC

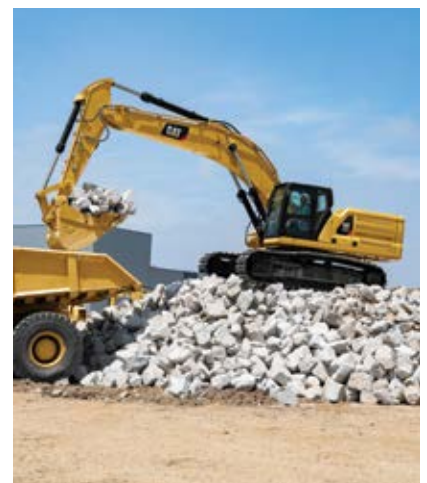


345 GC

LARGE HYDRAULIC EXCAVATORS

336 GC, 336, 345 GC, 349D2 L, 374F L, 390F L

- Net Power – 195 kW to 405 kW
- Operating Weights – 34800 kg to 92020 kg
- Large excavators are built to perform. Powerful hydraulics, fast cycle times help maximize revenue.
- 336 features Cat Grade, Assist and Payload as standard and can improve operator efficiency by as much as 45%.
- 345 GC is designed for operations where high reliability and low-cost-per-hour performance are priorities.
- Fuel burn is exceptionally low, especially on models with ACS Valve (374F and 390F L). Less back-pressure in the system significantly reduces fuel consumption.
- Next Generation large excavators significantly reduce operating costs, with maintenance costs reduced by up to 20% over their D2 Series predecessors.



SIMPLY DURABLE

Durable, Reliable, Economical, Fuel Competitive

We call it the GC-effect

Introducing the new standard Cat® GC machines

950GC, 320GC, 330GC, 336GC, 345GC, 740GC & 140GC



www.cat.com

WHEELED HYDRAULIC EXCAVATORS

M315D2, M317D2, M320D2, M322D2

- Net Power – 95 kW to 123.5 kW
- Travel Speeds – Up to 37 km/h
- Dedicated swing pump enables greater productivity and lower operating costs. A dedicated variable displacement piston pump and fixed displacement piston motor power the swing drive. This closed hydraulic circuit maximizes swing performance without reducing flow and power to the other hydraulic functions, resulting in smoother combined movements and lower fuel consumption.
- Daily maintenance can be performed from ground level quickly and efficiently while maintaining operator safety.
- Best-in-Class filtration system that is designed for challenging work conditions, even when using lower quality fuel. Industrial grade electrical wiring (SXL type) resists dust, water and vibration to provide durability and increase uptime over the entire life of the machine.
- Best-in-class reach and lifting capacity. Booms and sticks are engineered with strength and the capability to maximize working envelopes in order to perform a wide range of operations effectively, and thereby reduce the need for additional equipment on the jobsite.
- The power boost feature helps customers lift heavy loads for a longer duration while maintaining the required speed, resulting in greater productivity.
- The Integrated Tool Control system enables the operator to select up to 10 pre-set combinations. This eliminates the need to re-set the hydraulic parameters each time a tool is changed.



M322D2



M324D2 MH

MATERIAL HANDLERS

M322D2 MH, M324D2 MH

- Net Power – 128.8 kW
- Operating Weights – 22100 to 26660 kg
- Swing Speed – 9 rpm to 10 rpm
- Max Travel Speed – 25 km/h
- A closed hydraulic circuit is dedicated to the swing only. Having two separate pumps, one for the swing and another for the other functions, enables faster, smoother combined movements.
- Efficient hydraulic system accomplishes the work without wasting fuel, while providing speed and precision.
- Great visibility – provided by large glass areas, standard rear-view camera with wide-angle lenses.
- Smart technologies help boost productivity while making operation easier: try the optional SmartBoom™ or Joystick steering
- Select from various flexible excavator configurations to MH-dedicated solutions.
- MH Boom, straight or drop-nose stick and various undercarriages, including front push blade to meet your needs.
- Ground level service access for routine maintenance items such as fuel and engine oil filters or fluid taps.



M322D2 MH



MEDIUM DOZERS

D5R2, D6K, D6R2, D7R, D8R, D8T

(Emission standards – D5R2 Tier 3, D6K Tier 3, D6R2 Tier 2, D7R Tier 2, D8R Tier 1, D8T Tier 3)

- Net Power – 97 kW to 242 kW
- Operating Weights – 13500 kg to 39025 kg
- Standard blade size – 3.31 m³ to 10.3 m³
- The D6K combines best-in-class fuel efficiency. D6K is hydrostatic transmission with the power and precision to excel in a wide range of jobs.
- This versatile bulldozer features a reliable power train and an overall design that is optimized for finish.
- The D5R2, D6R2 and D8T are electronic controlled power shift transmission, three speed forward and reverse, endures smooth shifting and the highly manoeuvrable differential steering provide a single control for all directional and speed choices.
- The D6R2 is equipped with a two-pump hydraulic system enabling simultaneous blade response and steering performance. The differential steering provides smooth turning even with a full blade load.
- It has fully dedicated configurations for construction, forestry, waste management or agriculture applications.
- The D7R and D8R are mechanically controlled power shift transmission, 3 speed forward and reverse. They are designed to be durable, especially in challenging conditions like extreme heat or cold, desert or rocky areas.
- The D8T C15 ACERT™ diesel engine is the most fuel-efficient tractor in its class.
- All dozers offer a choice of undercarriage, blade, ripper, winch, rear drawbar, guarding to best fit your operations.
- All models can be equipped with Product Link™/VisionLink® technologies to maximize machine maintenance, fleet management, uptime and jobsite efficiency.
- Cat Grade with Slope Assist is an option available for all tractors to help operators more easily achieve the required main-fall and slope orientation of the blade by automatically maintaining pre-established blade angles for the grade. The system saves time, increases finish quality and reduces operator input.
- All models are equipped with an updated cab with integrated Roll Over Protection Structure, providing the operator with greater all-round visibility to enhance safety and productivity.
- All dozers deliver extraordinary power with smooth, precise control to help you achieve greater production at a lower cost per cubic meter/ton.

LARGE DOZERS

D9R, D9T, D10T2, D11

(Emission standards – D9R, Tier 0; D9T Tier 2; D10T2, Tier 2; D11, Tier 2)

- Net Power – 302 kW to 634 kW
- Operating Weights – 48361 kg to 104236 kg
- Powerful, rugged, easy-to-service Cat® engines deliver high torque rise and meet or exceed emissions requirements.
- Multiple undercarriage solutions enable you to minimize owning and operating costs on your jobsite.
- Dependable performance and low operating costs.
- Future-ready-optimized electronic architecture enables 360° vision, high-speed data transfer and semi-autonomous operation.
- Comfortable, ergonomic operator stations enable high production with easy-to-reach controls, Cat Contour Series seats and excellent view of work area.
- Elevated sprockets isolate final drives from ground impacts—suspended undercarriages put more track on the ground for greater traction, less slippage, smoother ride and longer life.
- Rugged dozer mainframes are heavy, strong and durable.
- Major modular components deliver reliable performance in tough working conditions and are designed for convenient serviceability.



D9T





914K

COMPACT WHEEL LOADERS

906K, 907K, 908K, 910K, 914K

- Net power – 55 kW to 74 kW
- Operating weights – 5600 kg to 8488 kg
- Optimized Z-bar linkage with parallel lift combines the digging efficiency of a traditional Z-bar with toolcarrier capabilities for powerful performance, versatility and precise control.
- Electro-hydraulic system provides low-effort, precise control to achieve fast cycle times.
- Performance series buckets give you a 110% fill factor and eco mode will save you fuel without sapping performance.
- Pillar-less rear glass, a refined, low-profile rear hood and a rear-view camera provide a full 360° view of the jobsite.



906K



908K

SMALL WHEEL LOADERS

924K, 930K, 938K

- Net power – 105 kW to 140 kW
- Operating weights – 12019 kg to 15485 kg
- Cat C7.1 ACERT™ engine with configurable auto idle shutdown saves on fuel burn.
- Excellent all-around visibility and low-effort joystick controls.
- Performance Series buckets and optimized Z-bar linkage combine the digging efficiency of a traditional Z-bar with tool carrier capabilities.
- The parallel-lift and high-tilt forces throughout the working range enable you to work safely, and confidently, with precise load handling that makes any work easier.
- Cylinder snubbing and set kick-outs reduce attachment wear.
- Select your preferred powertrain mode via the touch screen, including Torque Converter, Hystat, ICE or Default modes.



938K





950 GC

MEDIUM WHEEL LOADERS

950 GC, 950L, 962L, 966L, 972L, 980L

- Net Power – 168 kW to 297 kW
- Operating Weights – 18848 kg to 35562 kg
- L Series wheel loaders are powered by U.S. EPA Tier 3/EU Stage IIIA ACERT™ engines—Heavy-duty powershift transmission, available on 966L and above, includes a torque lockup clutch converter that matches engine power and hydraulics to maximize machine performance and fuel efficiency.
- The 950 GC provides the full value customers expect from a Cat® machine in terms of performance, low fuel consumption, reliability and durability in moderate duty applications; all while being simpler to operate and maintain.
- Cat Production Measurement and VisionLink® enable operators and managers to access machine data including bucket payload, fuel consumption, engine idle time and operating hours.
- Aggregate Package, available on 962L and above, enables maximum payloads and fuel efficiency, and optimizes pass match with trucks in aggregate re-handling applications.
- Hydraulic and electrical service centers enable ground level maintenance.
- Ergonomically designed cabs are best-in-class work environments and provide comfortable seating, ergonomic seat-mounted controls, new keypad and display, automatic climate control and reduced sound and vibration levels.



980L

LARGE WHEEL LOADERS

986K, 988K, 990K, 992K, 993K, 994K

- Net Power – 335 kW to 1 297 kW
- Operating Weight – 44810 kg to 242563 kg
- 986K is the perfect replacement for 988B and 988F customers.
- 986K, 988K and 990K are available as Aggregate Handlers, fully dedicated configurations maximizing machine payload in re-handling applications.
- The 986K and the 988K are also available with a Block Handling Arrangement with a lift capacity of up to 54 ton at ground line.
- Improved K Series machines increase productivity and fuel efficiency while reducing emissions, improving operator safety, comfort, serviceability, and reducing owning and operating costs.
- Engines produce more power at lower engine speeds, reducing fuel consumption.
- Designed to effectively pass match off-highway trucks for improved productivity.
- Enhanced structural design for high reliability, durability, multiple rebuilds and high-hour component service lives.
- Ergonomically designed cabs with low-effort controls and world-class visibility to truck beds and hoppers.
- Ground level service access and extended service intervals enhance safety and reduce owning and operating costs.



988K

BACKHOE LOADERS

422F2, 426F2, 428F2, 432F2, 434F2, 444F2

- Net Power – 56 kW to 74.5 kW
- Operating Weights – 7529 kg to 9606 kg
- Variable displacement hydraulic pump matches supply to demand, meaning the pump is not always running at full capacity, delivering class-leading fuel efficiency.
- Load-sensing and flow-sharing valves actively manage the flow of oil to each function, so that when the operator selects multiple tasks, the machine responds efficiently providing smooth, effortless operation.
- Differential Lock is standard on all backhoe loaders providing increased traction on poor underfoot conditions and reducing tire wear.
- The F2 Series of backhoe loaders boasts heavy-duty axles that deliver greater durability, low noise levels and superb traction on uneven surfaces.
- All daily service checkpoints are grouped together for easy access; sealed-for-life axles and driveshafts eliminate the need to grease any time-consuming areas beneath the machine.
- The entire F2 range of Backhoe Loaders is equipped with Cat Cushion Swing, which enables very fast trenching by damping the boom oscillation during trenching cycles.



426F2





140 GC

MOTOR GRADERS

120, 120 (AWD), 12K, 140 GC, 140K, 160K, 14L (AWD), 14M3, 16M3, 18M3, 24

- Net Power – 108 kW to 397 kW
- Operating Weights – 18095 kg to 65839 kg
- Introducing the 120 that replaces the 120K and offers common platform/powertrain, brand new cab with choice of controls (lever or joystick, AWD option, improved fuel efficiency).
- Introducing the 140 GC lever controlled, Tier 3 motor grader, that provides an alternative solution to the 140K to companies looking for a simpler yet reliable, comfortable and economical machine for all type of operations.
- Economy Mode can save up to 10 percent in fuel while Cat® Connect integrated technology and services help you monitor, manage and enhance machine performance in any jobsite conditions.
- The 16M3 features the “OK-to-Start” system, which automatically checks the engine coolant, engine oil, and hydraulic levels when the key is turned to the on position.
- Grade Control Cross Slope is an optional, fully integrated, factory-installed system that helps operators improve grading efficiency and more easily maintain accurate cross slopes.
- Cat Advanced Control Joysticks enable operators to control either Cat Grade Control Cross Slope, AccuGrade™, and/or configure auxiliary hydraulic functions, such as ripper, etc. without removing their hands from the joysticks.
- Speed Sensitive Steering automatically makes steering less sensitive as ground speed increases for greater operator confidence and control—this boosts safety and efficiency.





631K

WHEEL-TRACTOR SCRAPERS

621K, 623K, 627K, 631K, 637K

- Choose from elevated and standard open-bowl designs.
- Heaped Capacities – 17.6 m³ to 26 m³
- Maximum Travel Speeds – up to 56 km/h
- Rated Loads – 25038 kg to 37200 kg (25.1 tons to 37.2 tons)
- Single and twin engine-powered machines to meet application conditions.
- Wheel-tractor scrapers provide long life durability, material flexibility, high productivity and controlled material spreading.
- Available technology includes Sequence Assist, Load Assist, Cat Grade Control, and Payload Estimator to enable operators to be more productive in a variety of material types and applications.



SOIL COMPACTORS

SMOOTH DRUM: CS10 GC, CS11 GC, CS12 GC, CS54B, CS56B, CS64B, CS68B, CS74B, CS78B, CS79B

PADFOOT DRUM: CP54B, CP56B, CP64B, CP68B, CP74B, CP76B

- **Vibratory Soil Compactors** are available with padfoot or smooth drum and feature the robust design and high reliability that Cat® machines are known for, plus technological advancements that contribute to jobsite productivity and efficiency.
- Operating Weights – 9 metric Tons to 20 metric Tons.
- Superior compaction performance due to high static linear load and best-in-class amplitude.
- Easy-to-use and simplified controls for easy operation.
- Best-in-class, 360° visibility to the front and rear of machine for safe operation.
- Proven, exclusive, world-class Cat features including the ultra-reliable pod-style vibratory system; the sealed-for-life, maintenance-free hitch bearing; and optional Cat Compaction Control.
- Reliable Cat engines provide ample power and consistent performance. Standard Eco-mode reduces fuel use during normal operation.
- Simple maintenance due to maintenance-free hitch bearings and extended maintenance intervals for vibratory system and hydraulic system, providing more uptime and lower maintenance costs.
- Cat-exclusive compaction indication technology, MDP (Machine Drive Power), providing operators with a simple indication of compaction completed.
- Optional Cat Compaction Control technology helps the operator determine when compaction has been completed to specification for greater productivity and uniform compaction density. Scalable solution can be configured to meet needs.

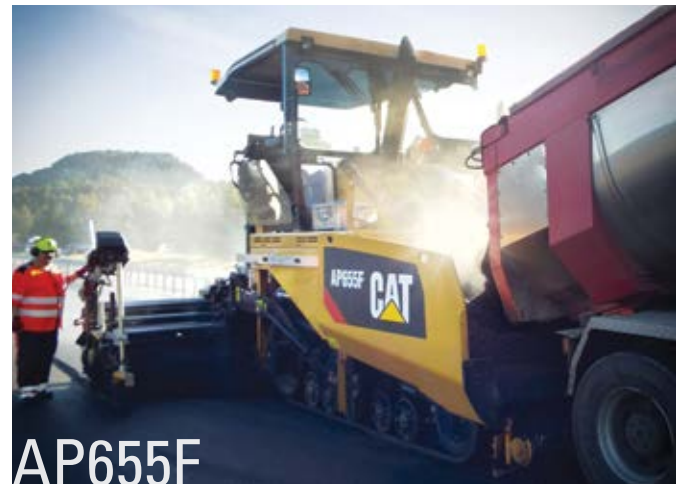
CS11 GC



ASPHALT PAVERS

AP255E, AP300F, AP355F, AP500F, AP555F, AP600F, AP655F, AP1055F

- **Asphalt Pavers and Screeds** provide a high return on investment and lower owning and operating costs, feature fast-heating screed plates and fuel-efficient engines, and deliver smooth results for wide-width paving.
- Paving Width – 0.5 meters to 10 meters with multiple screed selection.
- Operating Weights – 4.6 metric Tons to 21.8 metric Tons offering the highest weight-in-class for superior tractive effort in asphalt and aggregate paving applications.
- Available with Wheels, Steel Track undercarriage and Cat® exclusive Mobil-Trac™ undercarriage options.
- Exclusive, integrated 70 kW generator designed for long life and fast heating screed leading to higher daily production. Heating time as low as 15 minutes.



AP655F

ASPHALT COMPACTION SOLUTIONS

ASPHALT COMPACTORS: CB7, CB8, CB10, CB13, CB15, CB16

UTILITY COMPACTORS: CB1.7, CB1.8, CB2.5, CB2.7, CB2.9, CB34B, CB36B, CC2.6, CC34B

- **Tandem Vibratory Rollers** provide superb mat densities, long intervals between water refills with industry-leading water spray system and a single fill point, dual water pumps, triple filtration, intermittent operation and high capacity. Optional seating choices provide excellent visibility and enhance jobsite safety. Proven pod-style eccentric weight technology patented by Caterpillar.
- Operating Weights – 1.6 metric Tons to 16 metric Tons for the full range of commercial and highway paving applications.

PNEUMATIC COMPACTORS: CW12, CW16, CW34

- **Pneumatic Tyre Rollers** offer excellent visibility enhancing safety at jobsites, ECO-mode operation, even compaction, and excel on a variety of materials due to flexible air-on-the-run capability. Powertrain with coast feature enables smooth start and stop on asphalt mat, preventing mat damage.
- Operating Weights – 5.2 metric tons to 27 metric tons flexible weight range through modular ballast system.
- Gross horsepower – 75 kW (CW12 and CW16), 96.5 kW (CW34).



CB10



CB2.7



CW34



PM620

COLD PLANERS

PM310, PM312, PM313, PM620, PM622, PM820, PM822, PM825

- New Cat **Cold Planers** are easy to use and deliver best-in-class productivity in applications ranging from milling highways to urban streets.
- Milling drum width options 1.0m, 1.2m, 1.3m, 2.0m, 2.2m, 2.5m.
- Heavy-duty powertrain driven by Caterpillar proprietary application designed powerful Cat C9.3 or C18 ACERT™ engines from 246 kW to 563 kW.
- Operating weights between 20 metric Tons and 38 metric Tons offer best in class power-to-weight ratios for superior cutting traction.
- Advanced Milling System with automatic load control and traction control system reduces slippage for optimum cutting performance even in deep plunge-cuts.
- Proprietary Cat Grade Control provides simple, intuitive operation and precise performance with features such as ramp-in, ramp-out capabilities and enhanced flush-cut capability.

ROAD RECLAIMERS

RM300, RM500B

- **Reclaimers/Stabilizers** with multiple application-specific rotor choices feature superior performance and reliability to achieve the most demanding job specifications in both full-depth road reclamation and soil stabilization applications.
- Reliable, efficient operation driven by powerful Cat® ACERT™ engines: 261 kW C11 on RM300 and 403 kW C15 on RM500.
- Cat RMs offer a dependable rotor drive system with a powershift transmission and hydraulic clutch, plus automatic rotor bearing lubrication.



RM500B

ARTICULATED TRUCKS

725C2, 730, 730 EJ, 735, 740 EJ, 740 GC, 745

(725C2, 730, 730 EJ, 740 EJ, 745 – Emission Standard Tier 2 or Tier 4; 735, 740 GC - Emission Standard Tier 2, Tier 3 or Tier 4)

- Net Power – 239 kW to 381 kW
- Hauling capacities – 15 m³ to 25 m³
- New world-class cab on 730 and larger models with extraordinary comfort and reduced 72 DbA sound level.
- Assisted Hoist System on 730 and larger models for automatic body raise and lower.
- Advanced Automatic Traction Control on 730 and larger models eliminates wheel slip for maximum traction in poor ground conditions, without any operator interaction.
- Automatic Retarder Control on 730 and larger models provides safe and productive downhill hauling.
- Combined Hoist / Transmission Lever on 730 and larger models enables gear selection, hoist control and park brake in one lever.
- Cat[®] Detect with Stability Assist on 730 and larger models warns the operator if there is a risk of the machine tipping over.
- Optional Cat Production Measurement system enables operators to view real-time load weights and know precisely when their target payload is achieved.
- On-the-go ejector option ensures fast cycle times and low spreading costs.



730



745

740 GC



SIMPLY ECONOMICAL



Durable, Reliable, Economical, Fuel Competitive

We call it the GC-effect

Introducing the new standard Cat® GC machines

950GC, 320GC, 330GC, 336GC, 345GC, 740GC & 140GC



CAT®

www.cat.com

OFF-HIGHWAY TRUCKS

770G, 772G, 773G, 775G, 777E, 777G

- Nominal payloads – 42.1 tons to 100 tons
- Net Power – 356 kW to 704 kW
- G-Series comes equipped with Standard Economy Mode, Adaptive Economy Mode, Engine Idle Shutdown and Auto Neutral Idle – features that enable fuel savings to optimize fuel economy throughout the haul cycle.
- The 770G and 772G now come standard with VIMS™ 3G, Caterpillar's Vital Information Management System; Truck Production Vital Information Management System; Truck Production data; TMPH (Ton Mile-Per-Hour) tire management system to help operate tires within their design specifications; and Product Link™ (Standard or Cellular).
- G-Series Transmission Control System, Advanced Productivity Electronic Control Strategy (APECS), provides improved shift quality, faster acceleration, better speed on grade and faster cycle times.
- Ideal for construction, quarry and mining applications involving long hauls, off-highway trucks carry large payloads, yielding low cost-per-ton.





777E

- Payload – 98.2 tons
- Gross power – 1016 hp C32 ACERT™ – EPA Tier2 engine
- E Series machine is powered with updated C32 ACERT™ engine that offers Standard Economy, Engine Idle Shutdown and Delayed Engine Shutdown features that provides optimum fuel economy throughout the haul cycle with increased reliability.
- Lighter empty machine weight with best-in-class payload enables customer to carry more payload to increase productivity
- World-class, ergonomically designed cabin and enhanced technology come with standard Vital Information Management System™ and Truck Payload Monitoring system to manage the machine performance data (machine operating time, fuel consumption & payload) remotely with Product Link™ (Standard or Cellular). This helps customer to lower their cost per ton.
- ECPC transmission with updated electronics delivers faster, & smoother shifts on grade.
- Enhanced safety features on the machine include increased visibility with additional lights, 4-point seat belt for operator, and brakes that meet ISO 3450:2011
- Reliable mining truck designed for the toughest applications, also rugged enough for quarry and construction applications. Lower operating cost and durability help ensure economical, dependable operating life.



ATTACHMENTS

Atachments for Cat machines are the perfect performance match for construction, earthmoving, demolition and many other applications.

Using our high-quality work tools in combination with Cat machines provides you with the right tool for your application and a tool that has been designed to work most efficiently with a Cat machine. No matter which tool

you select from our extensive range of attachments, you benefit from uninterrupted productivity.

A single point of contact for all your machine and attachment needs. And the backing of our unrivaled spare parts and service, and vast dealer network. That's an unbeatable combination. Even our work tools are characterized by their high resale value.



Blades



Block-Handling Work Tools



Compactor Plates



Demolition & Sorting Grapples



Excavator Buckets



Hammers



Hex CW Coupler



Multi-Processors



Orange Peel Grapples



Rippers



Scrap Shears



Wheel Loader Buckets

NO FRILLS, NO FUSS, SIMPLY BREAK!



THE ALL NEW GC-SERIES HAMMERS



GAS FIRED
TECHNOLOGY



STROKE
SELECTOR



LOWER TOOL
BUSHING



LOCATOR



RENT
OR LEASE

The **GC-Series** is a breakthrough range of affordable, durable hammers. Now you can do everyday tasks without paying the earth! Combining simple design with all the essential features you need, they deliver best-in-class performance, ease-of-use and serviceability. If you're ready to break without breaking the bank, these operator-friendly, easily maintained hammers are for you.

Talk to us and get a great deal! Cat.com

CAT[®]

SIMPLY FUEL COMPETITIVE



Durable, Reliable, Economical, Fuel Competitive

We call it the GC-effect

Introducing the new standard Cat® GC machines

950GC, 320GC, 330GC, 336GC, 345GC, 740GC & 140GC



www.cat.com