

# C13

Engine | 600-711 bhp (447-530 kW) | 1,760-1,991 lb-ft (2386-2700 Nm)



**Get legendary Cat reliability and durability with low operating costs using the Cat® C13 ACERT™ Diesel Engines.**

Based on decades of diesel engine innovation and expertise, these engines are designed for severe duty equipment and the most demanding environments and applications around the world. It's available in two unregulated ratings: 600 bhp (447 kW) with a single turbocharger configuration and 711 bhp (530 kW) with a serial turbocharger configuration.

More importantly, they are backed by the Cat® global dealer network ready to keep missions moving anywhere in the world.

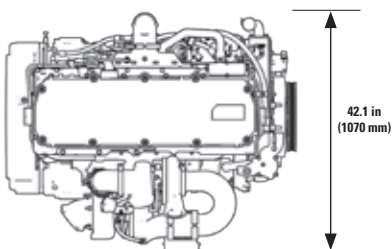
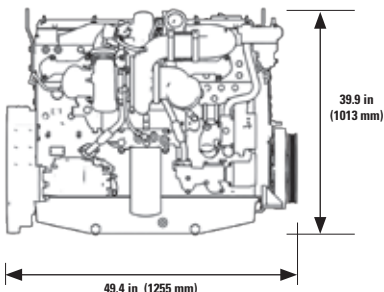
#### Built to Power:

Wheeled APCs and IFVs

Wheeled MRAPs

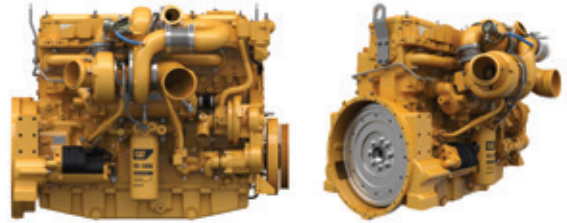
Medium Weight Utility Trucks

Tracked Combat Vehicles

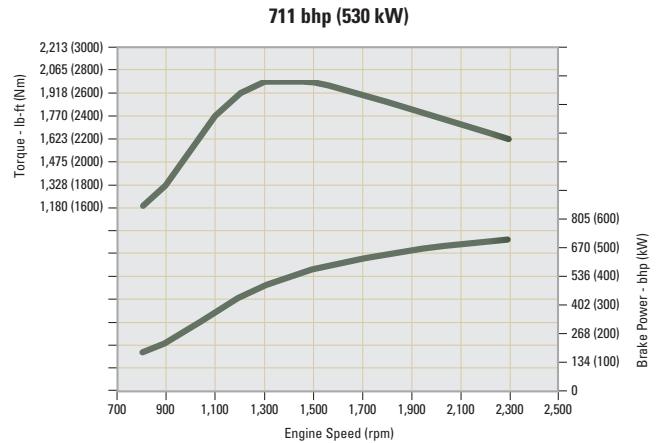
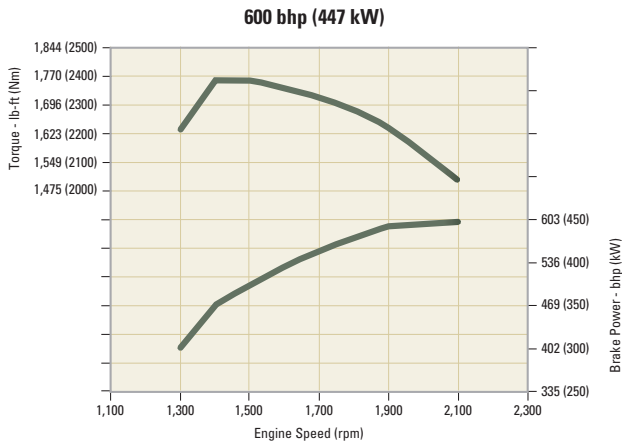


#### Specifications

Engine Configuration	In-line 6 Cylinder
Bore and Stroke (in/mm)	5.12 x 6.18 / 130 x 157
Displacement (in <sup>3</sup> /L)	763 / 12.5
Aspiration	Turbocharged and Aftercooled
Cycle	4 Stroke
Combustion System	Direct Injection
Compression Ratio	15.8 to 18:1
Rotation from Flywheel End	Counterclockwise
Oil Capacity (gal/L)	8 / 30
Cooling System	Liquid
Coolant Capacity (gal/L)	3.8 / 14.2
Dry Weight (lb/kg)	2,371-2,520 / 1075-1143



## Superior power at speed. (based on SAE J1995)



Brake Power (bhp/kW)	Speed (rpm)	Torque (lb-ft/Nm)	Speed (rpm)	Emission Level
600 / 447	2,100	1,760 / 2386	1,400	Unregulated
711 / 530	2,300	1,991 / 2700	1,300	Unregulated

## Standard Equipment

### Air Inlet and Exhaust System

- Single or series sequential turbochargers
- Exhaust manifold, dry

### Control System

- Electronic governing, PTO speed control
- Automatic altitude compensation
- Power compensation for fuel temperature
- Programmable low and high idle and total engine limit
- Electronic diagnostics and fault logging
- SAE J1939 broadcast and control
- ADEM™ A4 Electronic Control Unit (ECU)

### Cooling System

- Thermostats and housing
- Jacket water pump, centrifugal
- Water pump, inlet

### Flywheels and Flywheel Housing

- SAE No. 1 flywheel housing

### Fuel System

- MEUI™ injection
- Fuel filter, secondary
- ACERT™ Technology
- Fuel transfer pump

### Lube System

- Crankcase breather
- Oil cooler
- Oil filler
- Lube oil filter
- Oil pan
- Oil dipstick
- Gear driven oil pump

### General

- Vibration damper
- Lifting eyes