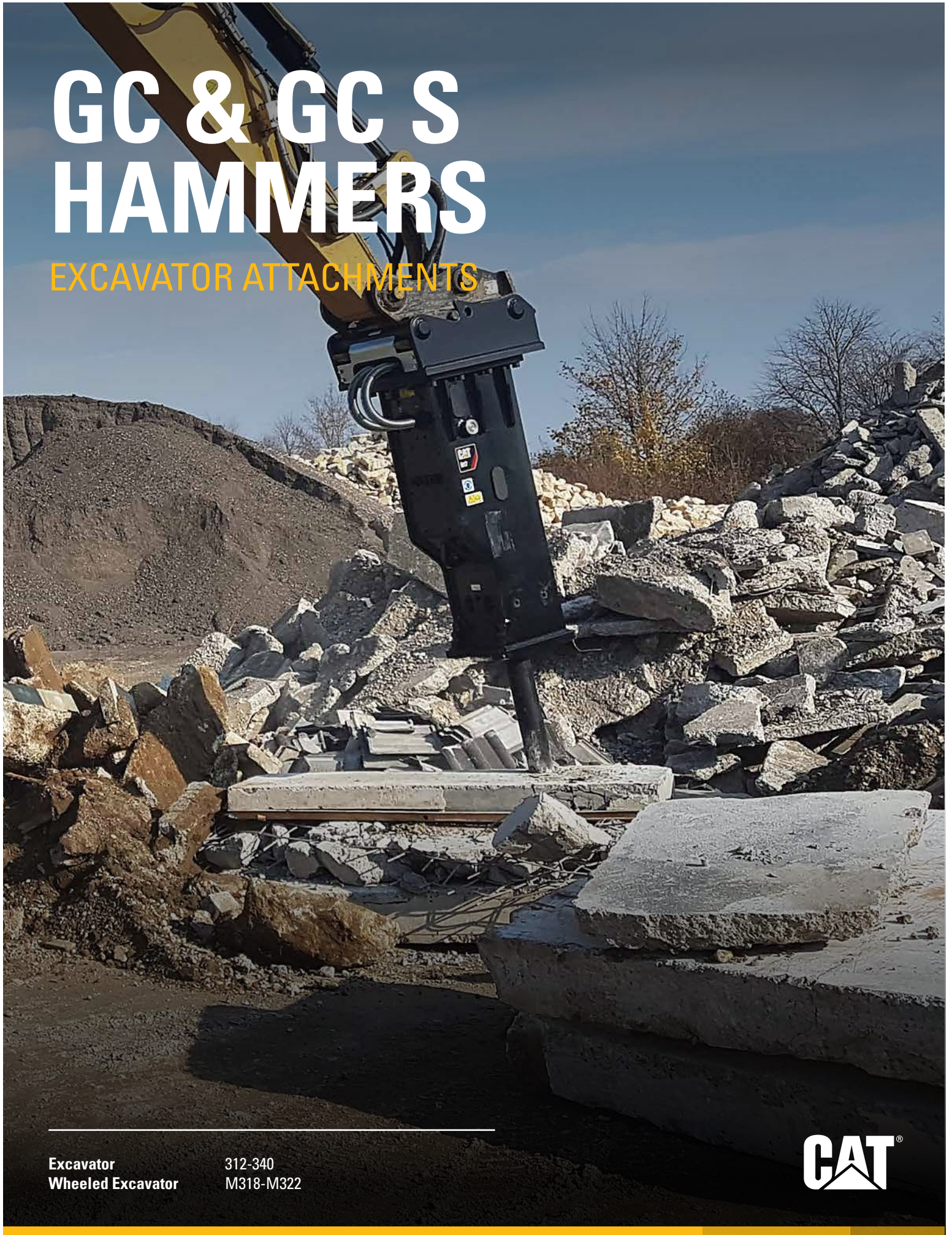


GC & GC S HAMMERS

EXCAVATOR ATTACHMENTS



Excavator
Wheeled Excavator

312-340
M318-M322





LOW COST- PER-HOUR PRODUCTIVITY

MAKE MORE EVERY SHIFT

Demolition and material sizing require maximum production for profitability. Cat GC and GC S hammers give you that edge.

Two basic styles – silenced (GC S) and non-silenced (GC) – available in five sizes provide you with the best fit for your machine and job.

MAXIMUM PRODUCTION
LOW COST



SAVE TIME

WITH EVERY CYCLE



BUILT TO ENDURE

You need consistent power all the time – not just when it's new. GC and GC S hammers use an advanced nitrogen fired design – proven to be reliable.



SILENT RUNNING

Less noise on the job site is inherently safer and means fewer complaints from folks nearby. Choose a silenced GC S hammer for integral, quiet operation.



EASY MAINTENANCE

The most common wear part – the lower bushing – can be changed in the field with hand tools.

You can easily access greasing points, gas check and gas fill ports – all while the hammer stays on the machine.

TECHNICAL SPECIFICATIONS

	NON-SILENCED									
	H110GC		H115GC		H120GC		H130GC		H140 GC	
Energy Class	2000 J	1475 ft-lb	3000 J	2212 ft-lb	4000 J	2950 ft-lb	6000 J	4425 ft-lb	7500 J	5531 ft-lb
Blows per Minute	450 min	650 max	450 min	800 max	400 min	800 max	350 min	700 max	250 min	550 max
Minimum Operating Weight	1237 kg	5302 lb	1307 kg	2875 lb	1826 kg	4017 lb	2364 kg	5201 lb	3017 kg	6637 lb
Maximum Operating Weight	1262 kg	7766 lb	1388 kg	3054 lb	1866 kg	4105 lb	2384 kg	5245 lb	3074 kg	6763 lb
Minimum Rated Flow	80 l/min	21 gal/min	90 L/min	24 gal/min	125 l/min	33 gal/min	160 l/min	42 gal/min	180 l/min	48 gal/min
Maximum Rated Flow	100 l/min	26 gal/min	120 L/min	32 gal/min	150 l/min	40 gal/min	190 l/min	50 gal/min	220 l/min	58 gal/min
Minimum Operating Pressure	14000 kPa	1885 psi	15000 kPa	2175 psi	16000 kPa	2320 psi	16000 kPa	2320 psi	16000 kPa	2320 psi
Maximum Operating Pressure	16000 kPa	2175 psi	17000 kPa	2465 psi	18000 kPa	2610 psi	18000 kPa	2610 psi	18000 kPa	2610 psi
Tool Shaft Diameter	72 mm	2.8 in	120 mm	4.72 in	135 mm	5.3 in	150 mm	5.9 in	153 mm	6.0 in
Minimum Carrier Weight	11 t	24251 lb	13 t	28660 lb	18 t	39683 lb	25 t	55115 lb	30 t	66138 lb
Maximum Carrier Weight	16 t	35274 lb	18 t	39683 lb	25 t	55115 lb	32 t	70547 lb	40 t	88184 lb

	SILENCED									
	H110 GC S		H115 GC S		H120 GC S		H130 GC S		H140 GC S	
Energy Class	2000 J	1475 ft-lb	3000 J	2212 ft-lb	4000 J	2950 ft-lb	150 mm	5.91 in	153 mm	6.02 in
Blows per Minute	450 min	650 max	450 min	800 max	400 min	800 max	6000 J	4425 ft-lb	7500 J	5531 ft-lb
Minimum Operating Weight	1203 kg	2647 lb	1307 kg	2875 lb	1754 kg	3859 lb	350 min	700 max	250 min	550 max
Maximum Operating Weight	1228 kg	2701.6 lb	1331 kg	2928.2 lb	1785 kg	3927 lb	2451 kg	5392 lb	2981 kg	6558 lb
Minimum Rated Flow	80 L/min	21 gal/min	90 L/min	24 gal/min	125 L/min	33 gal/min	2487 kg	5471.4 lb	3134 kg	6894.8 lb
Maximum Rated Flow	100 L/min	26 gal/min	120 L/min	32 gal/min	151 L/min	40 gal/min	161 L/min	43 gal/min	181 L/min	48 gal/min
Minimum Operating Pressure	14000 kPa	2030 psi	15000 kPa	2175 psi	16000 kPa	2320 psi	191 L/min	51 gal/min	221 L/min	58 gal/min
Maximum Operating Pressure	16000 kPa	2320 psi	17000 kPa	2465 psi	18000 kPa	2610 psi	16000 kPa	2320 psi	16000 kPa	2320 psi
Tool Shaft Diameter	72 mm	2.83 in	120 mm	4.72 in	135 mm	5.31 in	18000 kPa	2610 psi	18000 kPa	2610 psi
Minimum Carrier Weight	11 t	24251 lb	13 t	28660 lb	18 t	39683 lb	25 t	55115 lb	30 t	66138 lb
Maximum Carrier Weight	16 t	35274 lb	18 t	39683 lb	25 t	55115 lb	32 t	70547 lb	40 t	88184 lb

LET'S DO THE WORK.™

For more complete information on Cat products, dealer services and industry solutions, visit us on the web at www.cat.com.

GEDQ9298-00
7-2019
Global

Materials and specifications are subject to change without notice. Featured machines in photos may include additional equipment. See your Cat dealer for available options.

© 2019 Caterpillar. All Rights Reserved. CAT, CATERPILLAR, LET'S DO THE WORK, their respective logos, "Caterpillar Yellow", the "Power Edge" and Cat "Modern Hex" trade dress as well as corporate and product identity used herein, are trademarks of Caterpillar and may not be used without permission.

www.cat.com www.caterpillar.com

