



# 972M

## Wheel Loader

# Technical Specifications

### Engine – (Tier 3/Stage IIIA equivalent)<sup>1</sup>

|                                |           |                     |
|--------------------------------|-----------|---------------------|
| Engine Model                   | Cat® C9.3 |                     |
| Maximum Power @ 1,800 rpm      |           |                     |
| SAE J1995                      | 246 kW    | 330 hp              |
| Maximum Power @ 1,800 rpm      |           |                     |
| ISO 14396                      | 242 kW    | 325 hp              |
| Maximum Net Power @ 1,700 rpm  |           |                     |
| SAE J1349                      | 222 kW    | 298 hp              |
| Maximum Net Power @ 1,700 rpm  |           |                     |
| ISO 9249                       | 222 kW    | 298 hp              |
| Peak Gross Torque (1,200 rpm)  |           |                     |
| SAE J1995                      | 1728 N·m  | 1,275 lbf-ft        |
| Peak Gross Torque (1,200 rpm)  |           |                     |
| ISO 14396                      | 1710 N·m  | 1,261 lbf-ft        |
| Maximum Net Torque (1,000 rpm) | 1632 N·m  | 1,204 lbf-ft        |
| Displacement                   | 9.3 L     | 568 in <sup>3</sup> |

<sup>1</sup> Meets Brazil MAR-1, UN ECE R96 Stage IIIA, and China Nonroad Stage III emission standards, equivalent to U.S. EPA Tier 3 and EU Stage IIIA.

### Buckets

|                   |                          |                           |
|-------------------|--------------------------|---------------------------|
| Bucket Capacities | 3.20-9.94 m <sup>3</sup> | 4.19-13.0 yd <sup>3</sup> |
|-------------------|--------------------------|---------------------------|

### Weight

|                  |           |           |
|------------------|-----------|-----------|
| Operating Weight | 24 900 kg | 54,871 lb |
|------------------|-----------|-----------|

- Weight based on a machine configuration with Michelin 26.5R25 XHA2 L3 radial tires, full fluids, operator, standard counterweight, cold start, roading fenders, Product Link™, manual diff lock/open axles (front/rear), power train guard, secondary steering, sound suppression and a 4.2 m<sup>3</sup> (5.5 yd<sup>3</sup>) general purpose bucket with BOCE

### Operating Specifications

|                                     |           |            |
|-------------------------------------|-----------|------------|
| Static Tipping Load – Full 37° Turn |           |            |
| With Tire Deflection                | 16 164 kg | 35,626 lb  |
| No Tire Deflection                  | 17 421 kg | 38,396 lb  |
| Breakout Force                      | 196 kN    | 44,075 lbf |

- For a machine configuration as defined under “Weight.”
- Full compliance to ISO 14397-1:2007 Sections 1 thru 6, which requires 2% verification between calculations and testing.

### Engine – (Tier 4 Final/Stage V)<sup>2</sup>

|                                |          |                     |
|--------------------------------|----------|---------------------|
| Engine Model                   | Cat C9.3 |                     |
| Maximum Power @ 1,800 rpm      |          |                     |
| SAE J1995                      | 251 kW   | 337 hp              |
| Maximum Power @ 1,800 rpm      |          |                     |
| ISO 14396                      | 247 kW   | 331 hp              |
| Maximum Net Power @ 1,700 rpm  |          |                     |
| SAE J1349                      | 223 kW   | 299 hp              |
| Maximum Net Power @ 1,700 rpm  |          |                     |
| ISO 9249                       | 223 kW   | 299 hp              |
| Peak Gross Torque (1,200 rpm)  |          |                     |
| SAE J1995                      | 1728 N·m | 1,275 lbf-ft        |
| Peak Gross Torque (1,200 rpm)  |          |                     |
| ISO 14396                      | 1710 N·m | 1,261 lbf-ft        |
| Maximum Net Torque (1,000 rpm) | 1654 N·m | 1,220 lbf-ft        |
| Displacement                   | 9.3 L    | 568 in <sup>3</sup> |

<sup>2</sup> Meets U.S. EPA Tier 4 Final, either EU Stage V or EU Stage IV\*, Japan 2014, and Korea Tier 4 Final emission standards.

- \* Stage IV engines comply with the transition provisions of the EU nonroad emission regulation
- The air conditioning system on this machine contains the fluorinated greenhouse gas refrigerant R134a (Global Warming Potential = 1430). The system contains 1.6 kg of refrigerant which has a CO<sub>2</sub> equivalent of 2.288 metric tonnes.

### Transmission

|           |           |          |
|-----------|-----------|----------|
| Forward 1 | 6.7 km/h  | 4.2 mph  |
| Forward 2 | 13.1 km/h | 8.1 mph  |
| Forward 3 | 23.2 km/h | 14.4 mph |
| Forward 4 | 39.5 km/h | 24.5 mph |
| Reverse 1 | 7.6 km/h  | 4.7 mph  |
| Reverse 2 | 15.0 km/h | 9.3 mph  |
| Reverse 3 | 26.5 km/h | 16.5 mph |
| Reverse 4 | 39.5 km/h | 24.5 mph |

- Maximum travel speed in standard vehicle with empty bucket and standard L3 tires with 826 mm (32.5 in) roll radius.



# 972M Wheel Loader Specifications

## Brakes

|        |                                     |
|--------|-------------------------------------|
| Brakes | Brakes meet ISO 3450:2011 standards |
|--------|-------------------------------------|

## Hydraulic System

|   |                              |            |
|---|------------------------------|------------|
| Implement Pump Type   | Variable Displacement Piston |            |
| Implement System  |                              |            |
| Maximum Pump Output (2,200 rpm)                                     | 360 L/min                    | 95 gal/min |
| Maximum Operating Pressure  | 31 000 kPa                   | 4,496 psi  |
| Optional 3 <sup>rd</sup> /4 <sup>th</sup> Function Maximum Flow     | 240 L/min                    | 63 gal/min |
| Optional 3 <sup>rd</sup> /4 <sup>th</sup> Function Maximum Pressure | 21 780 kPa                   | 3,159 psi  |
| Hydraulic Cycle Time with Rated Payload                             |                              |            |
| Raise from Carry Position   | 6.1 Sec.                     |            |
| Dump, at Maximum Raise  | 1.5 Sec.                     |            |
| Lower, Empty, Float Down  | 3.1 Sec.                     |            |
| Total   | 10.7 Sec.                    |            |

## Axles

|                                    |                         |         |
|------------------------------------|-------------------------|---------|
| Front                              | Fixed                   |         |
| Rear                               | Oscillating ±13 degrees |         |
| Maximum Single-Wheel Rise and Fall | 502 mm                  | 19.8 in |

## Cab

|           |   |
|-----------|---|
| ROPS/FOPS | ROPS/FOPS meet ISO 3471:2008 and ISO 3449:2005 Level II standards |
|-----------|---|

## Sound

The sound values indicated below are for specific operating conditions only. Machine and operator sound levels will vary at different engine and/or cooling fan speeds. Hearing protection may be needed when the machine is operated with a cabin that is not properly maintained, or when the doors and/or windows are open for extended periods or in a noisy environment.

With Cooling Fan Speed at Maximum Value:

|   |           |
|---|-----------|
| Operator Sound Pressure Level (ISO 6396:2008) | 70 dB(A)  |
| Exterior Sound Power Level (ISO 6395:2008)    | 109 dB(A) |
| Exterior Sound Pressure Level (SAE J88:2013)  | 76 dB(A)* |

\*Distance of 15 m (49.2 ft), moving forward in second gear ratio.

With Cooling Fan Speed at 70% of Maximum Value:\*\*

|                               |                         |
|-------------------------------|-------------------------|
| Operator Sound Pressure Level | 69 dB(A)                |
| Exterior Sound Power Level    | 108 L <sub>WA</sub> *** |

\*\*For machines in European Union countries and in countries that adopt the “EU Directives.”

\*\*\*European Union Directive “2000/14/EC” as amended by “2005/88/EC.”

## Service Refill Capacities

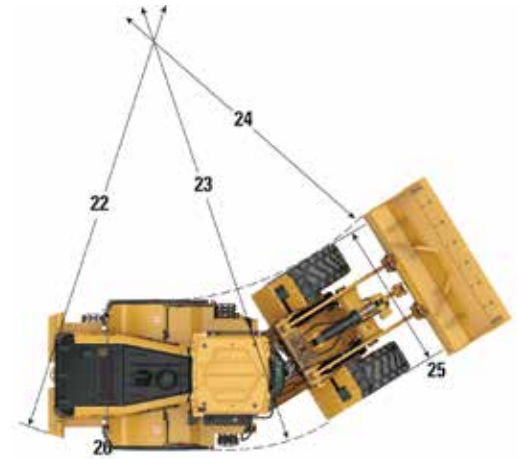
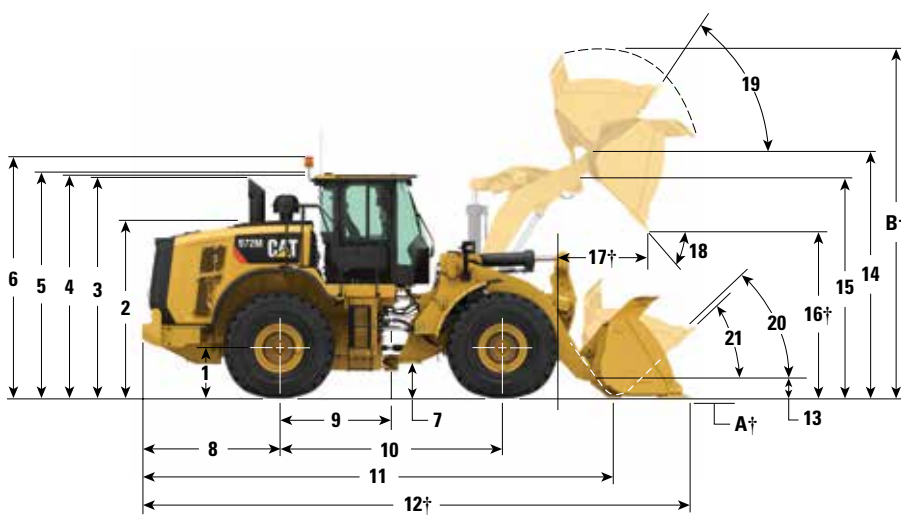
|  |        |          |
|--|--------|----------|
| Fuel Tank                              | 302 L  | 79.8 gal |
| DEF Tank*                              | 16.8 L | 4.4 gal  |
| Cooling System                         | 71.6 L | 18.9 gal |
| Crankcase                              | 24.5 L | 6.5 gal  |
| Transmission                           | 58.5 L | 15.5 gal |
| Differentials and Final Drives – Front | 57 L   | 15.1 gal |
| Differentials and Final Drives – Rear  | 57 L   | 15.1 gal |
| Hydraulic Tank                         | 125 L  | 33 gal   |

\*Must meet the requirements outlined in ISO 22241-1 for Tier 4 Final/Stage V models.

# 972M Wheel Loader Specifications

## Dimensions

All dimensions are approximate.



|   | Standard Lift |        | High Lift  |        | Extended Capacity |        |
|---|---------------|--------|------------|--------|-------------------|--------|
| 1 Height to Axle Centerline                           | 799 mm        | 2'7"   | 2818 mm    | 9'3"   | 799 mm            | 2'7"   |
| 2 Height to Top of Hood                               | 2818 mm       | 9'3"   | 2818 mm    | 9'3"   | 2818 mm           | 9'3"   |
| 3 Height to Top of Exhaust Pipe                       | 3522 mm       | 11'7"  | 3522 mm    | 11'7"  | 3522 mm           | 11'7"  |
| 4 Height to Top of ROPS                               | 3587 mm       | 11'9"  | 3587 mm    | 11'9"  | 3587 mm           | 11'9"  |
| 5 Height to Top of Product Link Antenna               | 3636 mm       | 11'11" | 3636 mm    | 11'11" | 3636 mm           | 11'11" |
| 6 Height to Top of Warning Beacon                     | 3859 mm       | 12'8"  | 3859 mm    | 12'8"  | 3859 mm           | 12'8"  |
| 7 Ground Clearance                                    | 434 mm        | 1'5"   | 434 mm     | 1'5"   | 434 mm            | 1'5"   |
| 8 Center Line of Rear Axle to Edge of Counterweight   | 2500 mm       | 8'2"   | 2500 mm    | 8'2"   | 2500 mm           | 8'2"   |
| 9 Center Line of Rear Axle to Hitch                   | 1775 mm       | 5'10"  | 1775 mm    | 5'10"  | 1775 mm           | 5'10"  |
| 10 Wheelbase  | 3550 mm       | 11'8"  | 3550 mm    | 11'8"  | 3550 mm           | 11'8"  |
| 11 Overall Length (without bucket)                    | 7774 mm       | 25'7"  | 8109 mm    | 26'8"  | 7609 mm           | 25'0"  |
| 12 Shipping Length (with bucket level on ground)*†    | 9315 mm       | 30'7"  | 9650 mm    | 31'8"  | 9164 mm           | 30'1"  |
| 13 Hinge Pin Height at Carry Height                   | 680 mm        | 2'3"   | 778 mm     | 2'7"   | 631 mm            | 2'1"   |
| 14 Hinge Pin Height at Maximum Lift                   | 4458 mm       | 14'8"  | 4793 mm    | 15'9"  | 4235 mm           | 13'11" |
| 15 Lift Arm Clearance at Maximum Lift                 | 3843 mm       | 12'7"  | 4140 mm    | 13'6"  | 3643 mm           | 11'11" |
| 16 Dump Clearance at Maximum Lift and 45° Discharge*† | 3154 mm       | 10'4"  | 3490 mm    | 11'5"  | 2920 mm           | 9'6"   |
| 17 Reach at Maximum Lift and 45° Discharge*†          | 1357 mm       | 4'5"   | 1380 mm    | 4'6"   | 1413 mm           | 4'7"   |
| 18 Dump Angle at Maximum Lift and Dump (on stops)*    | 48 degrees    |        | 48 degrees |        | 48 degrees        |        |
| 19 Rack Back at Maximum Lift*                         | 56 degrees    |        | 71 degrees |        | 62 degrees        |        |
| 20 Rack Back at Carry Height*                         | 50 degrees    |        | 49 degrees |        | 50 degrees        |        |
| 21 Rack Back at Ground*                               | 41 degrees    |        | 39 degrees |        | 42 degrees        |        |
| 22 Turning Radius to Counterweight                    | 6804 mm       | 22'4"  | 6804 mm    | 22'4"  | 6804 mm           | 22'4"  |
| 23 Turning Radius to Outside of Tires                 | 6761 mm       | 22'3"  | 6761 mm    | 22'3"  | 6761 mm           | 22'3"  |
| 24 Turning Radius to Inside of Tires                  | 3853 mm       | 12'8"  | 3853 mm    | 12'8"  | 3853 mm           | 12'8"  |
| 25 Width over Tires (unloaded)                        | 2991 mm       | 9'10"  | 2991 mm    | 9'10"  | 2991 mm           | 9'10"  |
| 26 Tread Width  | 2230 mm       | 7'4"   | 2230 mm    | 7'4"   | 2230 mm           | 7'4"   |

\*Standard and High Lift are with 4.8 m<sup>3</sup> (6.3 yd<sup>3</sup>) general purpose pin on bucket with BOCE (see Operating Specifications for other buckets).

†Dimensions are listed in Operating Specification charts.

All height and tire related dimensions are with Michelin 26.5R25 XHA2 L3 tires (see Tire Option Chart for other tires).

# 972M Wheel Loader Specifications

## Dimension Changes – Tires

| Tire Brand   | Michelin         | Michelin           | Michelin            | Bridgestone      | Bridgestone         | Bridgestone        |
|--|------------------|--------------------|---------------------|------------------|---------------------|--------------------|
| Tire Size  | 26.5R25          | 26.5R25            | 26.5R25             | 26.5R25          | 26.5R25             | 775/65R29          |
| Tread Type   | L-4              | L-5                | L-5                 | L-3              | L-5                 | L-3                |
| Tread Pattern  | XLDD1            | XLDD2              | XMINED2             | VJT              | VSDL                | VTS                |
| Width over Tires – Maximum (empty)*                          | 2987 mm<br>9'10" | 2986 mm<br>9'10"   | 2970 mm<br>9'9"     | 2982 mm<br>9'9"  | 2874 mm<br>9'5"     | 3080 mm<br>10'1"   |
| Width over Tires – Maximum (loaded)*                         | 3019 mm<br>9'11" | 3011 mm<br>9'11"   | 2994 mm<br>9'10"    | 3016 mm<br>9'11" | 2900 mm<br>9'6"     | 3101 mm<br>10'2"   |
| Change in Vertical Dimensions<br>(average of front and rear) | 44 mm<br>1.7"    | 39 mm<br>1.5"      | 53 mm<br>2.1"       | 15 mm<br>0.6"    | 50 mm<br>2"         | 17 mm<br>0.7"      |
| Change in Horizontal Reach                                   | -36 mm<br>-1.4"  | -34 mm<br>-1.3"    | -32 mm<br>-1.3"     | -3 mm<br>-0.1"   | -29 mm<br>-1.1"     | -5 mm<br>-0.2"     |
| Change in Clearance Circle (radius) to Outside of Tires      | 5 mm<br>0.2"     | 1 mm<br>0"         | -7 mm<br>-0.3"      | 3 mm<br>0.1"     | -54 mm<br>-2.1"     | 46 mm<br>1.8"      |
| Change in Clearance Circle (radius) to Inside of Tires       | -5 mm<br>-0.2"   | -1 mm<br>0"        | 7 mm<br>0.3"        | -3 mm<br>-0.1"   | 54 mm<br>2.1"       | -46 mm<br>-1.8"    |
| Change in Operating Weight (without Ballast)                 | 420 kg<br>926 lb | 716 kg<br>1,578 lb | 1068 kg<br>2,354 lb | 164 kg<br>361 lb | 1136 kg<br>2,504 lb | 856 kg<br>1,886 lb |
| Change in Static Tipping Load – Straight                     | 283 kg<br>623 lb | 482 kg<br>1,062 lb | 719 kg<br>1,584 lb  | 110 kg<br>243 lb | 764 kg<br>1,685 lb  | 576 kg<br>1,269 lb |
| Change in Static Tipping Load – Articulated                  | 252 kg<br>555 lb | 429 kg<br>946 lb   | 640 kg<br>1,411 lb  | 98 kg<br>216 lb  | 680 kg<br>1,499 lb  | 513 kg<br>1,131 lb |

\*Width over bulge and includes tire growth.

# 972M Wheel Loader Specifications


## Bucket Fill Factors and Selection Chart

The bucket size must be chosen based on the density of the material and on the expected fill factor. The new Cat Performance Series Buckets with longer floor, larger bucket opening, increased repository angle, rounded side boards and integrated spill guard, demonstrate fill factors significantly higher than previous generation or non Cat buckets. The actual volume handled by the machine is thus often larger than the rated capacity.

| Loose Material  |                             | Material Density  | Fill Factor (%)* |
|-----------------|-----------------------------|---|------------------|
| Earth/Clay      |                             | 1500-1700 kg/m <sup>3</sup> (2,528-2,865 lb/yd <sup>3</sup> ) | 115              |
| Sand and Gravel |                             | 1500-1700 kg/m <sup>3</sup> (2,528-2,865 lb/yd <sup>3</sup> ) | 115              |
| Aggregate:      | 25-76 mm (1 to 3 in)        | 1600-1700 kg/m <sup>3</sup> (2,696-2,865 lb/yd <sup>3</sup> ) | 110              |
|                 | 19 mm (0.75 in) and smaller | 1800 kg/m <sup>3</sup> (3,033 lb/yd <sup>3</sup> )            | 105              |
| Rock:           | 76 mm (3 in) and larger     | 1600 kg/m <sup>3</sup> (2,696 lb/yd <sup>3</sup> )            | 100              |

\*As a % of ISO 7546 rated capacity.

**Note:** Fill Factors achieved will also depend on whether the product is washed or not washed.

| Material Density  |                              | kg/m <sup>3</sup>                           | 700   | 800   | 900   | 1000  | 1100  | 1200  | 1300  | 1400  | 1500  | 1600  | 1700  | 1800  | 1900  | 2000  | 2100  | 2200  | 2300  | 2400  | 2500  |  |  |
|---|------------------------------|---|-------|-------|-------|-------|-------|-------|-------|-------|-------|-------|-------|-------|-------|-------|-------|-------|-------|-------|-------|--|--|
| Standard Linkage  | Pin On<br>General Purpose    | 4.60 m <sup>3</sup> (6.00 yd <sup>3</sup> ) |       |       |       |       |       |       |       |       |       |       |       |       |       |       |       |       |       |       |       |  |  |
|   |                              | 4.80 m <sup>3</sup> (6.25 yd <sup>3</sup> ) |       |       |       |       |       |       |       |       |       |       |       |       |       |       |       |       |       |       |       |  |  |
|   |                              | 5.00 m <sup>3</sup> (6.50 yd <sup>3</sup> ) |       |       |       |       |       |       |       |       |       |       |       |       |       |       |       |       |       |       |       |  |  |
| Standard Linkage  | Fusion OC<br>General Purpose | 4.40 m <sup>3</sup> (5.75 yd <sup>3</sup> ) |       |       |       |       |       |       |       |       |       |       |       |       |       |       |       |       |       |       |       |  |  |
|   |                              | 4.60 m <sup>3</sup> (6.00 yd <sup>3</sup> ) |       |       |       |       |       |       |       |       |       |       |       |       |       |       |       |       |       |       |       |  |  |
|   |                              | 4.80 m <sup>3</sup> (6.25 yd <sup>3</sup> ) |       |       |       |       |       |       |       |       |       |       |       |       |       |       |       |       |       |       |       |  |  |
| Standard Linkage  | Pin On<br>Material Handling  | 4.60 m <sup>3</sup> (6.00 yd <sup>3</sup> ) |       |       |       |       |       |       |       |       |       |       |       |       |       |       |       |       |       |       |       |  |  |
|   |                              | 4.80 m <sup>3</sup> (6.25 yd <sup>3</sup> ) |       |       |       |       |       |       |       |       |       |       |       |       |       |       |       |       |       |       |       |  |  |
|   |                              | 5.00 m <sup>3</sup> (6.50 yd <sup>3</sup> ) |       |       |       |       |       |       |       |       |       |       |       |       |       |       |       |       |       |       |       |  |  |
| High Lift Linkage   | Pin On<br>General Purpose    | 4.60 m <sup>3</sup> (6.00 yd <sup>3</sup> ) |       |       |       |       |       |       |       |       |       |       |       |       |       |       |       |       |       |       |       |  |  |
|   |                              | 4.80 m <sup>3</sup> (6.25 yd <sup>3</sup> ) |       |       |       |       |       |       |       |       |       |       |       |       |       |       |       |       |       |       |       |  |  |
|   |                              | 5.00 m <sup>3</sup> (6.50 yd <sup>3</sup> ) |       |       |       |       |       |       |       |       |       |       |       |       |       |       |       |       |       |       |       |  |  |
| High Lift Linkage   | Fusion OC<br>General Purpose | 4.40 m <sup>3</sup> (5.75 yd <sup>3</sup> ) |       |       |       |       |       |       |       |       |       |       |       |       |       |       |       |       |       |       |       |  |  |
|   |                              | 4.60 m <sup>3</sup> (6.00 yd <sup>3</sup> ) |       |       |       |       |       |       |       |       |       |       |       |       |       |       |       |       |       |       |       |  |  |
|   |                              | 4.80 m <sup>3</sup> (6.25 yd <sup>3</sup> ) |       |       |       |       |       |       |       |       |       |       |       |       |       |       |       |       |       |       |       |  |  |
| High Lift Linkage   | Pin On<br>Material Handling  | 4.60 m <sup>3</sup> (6.00 yd <sup>3</sup> ) |       |       |       |       |       |       |       |       |       |       |       |       |       |       |       |       |       |       |       |  |  |
|   |                              | 4.80 m <sup>3</sup> (6.25 yd <sup>3</sup> ) |       |       |       |       |       |       |       |       |       |       |       |       |       |       |       |       |       |       |       |  |  |
|   |                              | 5.00 m <sup>3</sup> (6.50 yd <sup>3</sup> ) |       |       |       |       |       |       |       |       |       |       |       |       |       |       |       |       |       |       |       |  |  |
| Extended Linkage  | Fusion OC<br>General Purpose | 4.90 m <sup>3</sup> (6.41 yd <sup>3</sup> ) |       |       |       |       |       |       |       |       |       |       |       |       |       |       |       |       |       |       |       |  |  |
| Aggregate Handler Package   | Pin On<br>General Purpose    | 5.10 m <sup>3</sup> (6.67 yd <sup>3</sup> ) |       |       |       |       |       |       |       |       |       |       |       |       |       |       |       |       |       |       |       |  |  |
|   |                              | 5.30 m <sup>3</sup> (6.93 yd <sup>3</sup> ) |       |       |       |       |       |       |       |       |       |       |       |       |       |       |       |       |       |       |       |  |  |
|   |                              | 5.50 m <sup>3</sup> (7.19 yd <sup>3</sup> ) |       |       |       |       |       |       |       |       |       |       |       |       |       |       |       |       |       |       |       |  |  |
| Material Density  |                              | lb/yd <sup>3</sup>                          | 1,180 | 1,348 | 1,517 | 1,685 | 1,854 | 2,022 | 2,191 | 2,359 | 2,528 | 2,696 | 2,865 | 3,033 | 3,202 | 3,370 | 3,539 | 3,707 | 3,876 | 4,044 | 4,213 |  |  |
| Bucket Fill Factors   |                              |   |       |       |       |       |       |       |       |       |       |       |       |       |       |       |       |       |       |       |       |  |  |
| 115% 110% 105% 100% 95%   |                              |   |       |       |       |       |       |       |       |       |       |       |       |       |       |       |       |       |       |       |       |  |  |
|  |                              |   |       |       |       |       |       |       |       |       |       |       |       |       |       |       |       |       |       |       |       |  |  |

# 972M Wheel Loader Specifications

## Operating Specifications with Buckets

| Linkage  |                 | Standard Linkage         |                    |        | Standard Linkage      |                    |        |                            |
|--|-----------------|--------------------------|--------------------|--------|-----------------------|--------------------|--------|----------------------------|
| Bucket Type  |                 | General Purpose – Pin On |                    |        |                       |                    |        |                            |
| Edge Type  |                 | Bolt-On Cutting Edges    | Teeth and Segments | Tips   | Bolt-On Cutting Edges | Teeth and Segments | Tips   | High Lift Linkage Change** |
| Capacity – Rated   | m <sup>3</sup>  | 4.60                     | 4.60               | 4.40   | 4.80                  | 4.80               | 4.60   | —                          |
|  | yd <sup>3</sup> | 6.00                     | 6.00               | 5.75   | 6.25                  | 6.25               | 6.00   | —                          |
| Capacity – Rated at 110% Fill Factor                         | m <sup>3</sup>  | 5.06                     | 5.06               | 4.84   | 5.28                  | 5.28               | 5.06   | —                          |
|  | yd <sup>3</sup> | 6.62                     | 6.62               | 6.33   | 6.91                  | 6.91               | 6.62   | —                          |
| Width  | mm              | 3220                     | 3271               | 3271   | 3220                  | 3271               | 3271   | —                          |
|  | ft/in           | 10'6"                    | 10'8"              | 10'8"  | 10'6"                 | 10'8"              | 10'8"  | —                          |
| <b>16</b> † Dump Clearance at Maximum Lift and 45° Discharge | mm              | 3187                     | 3033               | 3033   | 3154                  | 2999               | 2999   | 336                        |
|  | ft/in           | 10'5"                    | 9'11"              | 9'11"  | 10'4"                 | 9'10"              | 9'10"  | 1'1"                       |
| <b>17</b> † Reach at Maximum Lift and 45° Discharge          | mm              | 1328                     | 1465               | 1465   | 1357                  | 1493               | 1493   | 23                         |
|  | ft/in           | 4'4"                     | 4'9"               | 4'9"   | 4'5"                  | 4'10"              | 4'10"  | 0.9"                       |
| Reach at Level Lift Arm and Bucket Level                     | mm              | 2969                     | 3174               | 3174   | 3014                  | 3219               | 3219   | 274                        |
|  | ft/in           | 9'8"                     | 10'4"              | 10'4"  | 9'10"                 | 10'6"              | 10'6"  | 11"                        |
| <b>A</b> † Digging Depth                                     | mm              | 103                      | 103                | 73     | 103                   | 103                | 73     | -5                         |
|  | in              | 4"                       | 4"                 | 2.8"   | 4"                    | 4"                 | 2.8"   | -0.2"                      |
| <b>12</b> † Shipping Length (with Bucket)                    | mm              | 9270                     | 9494               | 9494   | 9315                  | 9539               | 9539   | 335                        |
|  | ft/in           | 30'5"                    | 31'2"              | 31'2"  | 30'7"                 | 31'4"              | 31'4"  | 1'1"                       |
| <b>B</b> † Overall Height with Bucket at Maximum Lift        | mm              | 6195                     | 6195               | 6195   | 6031                  | 6031               | 6031   | 336                        |
|  | ft/in           | 20'4"                    | 20'4"              | 20'4"  | 19'10"                | 19'10"             | 19'10" | 1'1"                       |
| Loader Clearance Circle with Bucket at Carry Position        | mm              | 15 192                   | 15 369             | 15 369 | 15 216                | 15 394             | 15 394 | 323                        |
|  | ft/in           | 49'11"                   | 50'6"              | 50'6"  | 50'0"                 | 50'7"              | 50'7"  | 1'0.7"                     |
| Static Tipping Load, Straight (With Tire Deflection)*        | kg              | 18 477                   | 18 293             | 18 550 | 18 502                | 18 318             | 20 545 | -1592                      |
|  | lb              | 40,723                   | 40,319             | 40,884 | 40,779                | 40,372             | 45,281 | -3,508                     |
| Static Tipping Load, Straight (No Tire Deflection)*          | kg              | 19 724                   | 19 537             | 19 796 | 19 755                | 19 567             | 22 192 | -1752                      |
|  | lb              | 43,473                   | 43,061             | 43,631 | 43,542                | 43,127             | 48,912 | -3,863                     |
| Static Tipping Load, Articulated (With Tire Deflection)*     | kg              | 16 135                   | 15 950             | 16 188 | 16 164                | 15 978             | 17 927 | -1423                      |
|  | lb              | 35,563                   | 35,155             | 35,680 | 35,626                | 35,215             | 39,512 | -3,137                     |
| Static Tipping Load, Articulated (No Tire Deflection)*       | kg              | 17 387                   | 17 200             | 17 439 | 17 421                | 17 233             | 19 558 | -1598                      |
|  | lb              | 38,322                   | 37,910             | 38,437 | 38,396                | 37,982             | 43,107 | -3,521                     |
| Breakout Force   | kN              | 202                      | 201                | 214    | 196                   | 194                | 207    | -6                         |
|  | lbf             | 45,482                   | 45,173             | 48,227 | 44,075                | 43,766             | 46,655 | -1,368                     |
| Operating Weight*  | kg              | 24 969                   | 25 106             | 24 943 | 24 897                | 25 034             | 24 871 | 84                         |
|  | lb              | 55,030                   | 55,334             | 54,974 | 54,871                | 55,175             | 54,816 | 186                        |

\*Static tipping loads and operating weights shown are based on a machine configuration with Michelin 26.5R25 XHA2 L3 radial tires, full fluids, operator, standard counterweight, cold start, roading fenders, Product Link, manual diff lock/open axles (front/rear), power train guard, secondary steering and sound suppression.

\*\*Maximum values.

(With Tire Deflection) Full compliance to ISO 14397-1:2007 Sections 1 thru 6, which requires 2% verification between calculations and testing.

(No Tire Deflection) Compliance to ISO 14397-1:2007 Sections 1 thru 5.

†Illustration shown with Dimension charts.

# 972M Wheel Loader Specifications

## Operating Specifications with Buckets

| Linkage   | Standard Linkage |                          |                    |        | Standard Linkage             |                    |        |                            |
|---|------------------|--------------------------|--------------------|--------|------------------------------|--------------------|--------|----------------------------|
|   | Bucket Type      | General Purpose – Pin On |                    |        | General Purpose – Fusion™ QC |                    |        | High Lift Linkage Change** |
| Edge Type   |                  | Bolt-On Cutting Edges    | Teeth and Segments | Tips   | Bolt-On Cutting Edges        | Teeth and Segments | Tips   |                            |
| Capacity – Rated  | m <sup>3</sup>   | 5.00                     | 5.00               | 4.80   | 4.40                         | 4.40               | 4.20   | —                          |
|   | yd <sup>3</sup>  | 6.50                     | 6.50               | 6.25   | 5.75                         | 5.75               | 5.50   | —                          |
| Capacity – Rated at 110% Fill Factor                        | m <sup>3</sup>   | 5.50                     | 5.50               | 5.28   | 4.84                         | 4.84               | 4.62   | —                          |
|   | yd <sup>3</sup>  | 7.19                     | 7.19               | 6.91   | 6.33                         | 6.33               | 6.04   | —                          |
| Width   | mm               | 3220                     | 3271               | 3271   | 3220                         | 3271               | 3271   | —                          |
|   | ft/in            | 10'6"                    | 10'8"              | 10'8"  | 10'6"                        | 10'8"              | 10'8"  | —                          |
| <b>16†</b> Dump Clearance at Maximum Lift and 45° Discharge | mm               | 3137                     | 2982               | 2982   | 3200                         | 3047               | 3047   | 336                        |
|   | ft/in            | 10'3"                    | 9'9"               | 9'9"   | 10'6"                        | 9'11"              | 9'11"  | 1'1"                       |
| <b>17†</b> Reach at Maximum Lift and 45° Discharge          | mm               | 1372                     | 1508               | 1508   | 1327                         | 1465               | 1465   | 23                         |
|   | ft/in            | 4'6"                     | 4'11"              | 4'11"  | 4'4"                         | 4'9"               | 4'9"   | 0.9"                       |
| Reach at Level Lift Arm and Bucket Level                    | mm               | 3037                     | 3242               | 3242   | 2958                         | 3163               | 3163   | 274                        |
|   | ft/in            | 9'11"                    | 10'7"              | 10'7"  | 9'8"                         | 10'4"              | 10'4"  | 11"                        |
| <b>A†</b> Digging Depth                                     | mm               | 103                      | 103                | 73     | 103                          | 103                | 73     | -5                         |
|   | in               | 4"                       | 4"                 | 2.8"   | 4"                           | 4"                 | 2.8"   | -0.2"                      |
| <b>12†</b> Shipping Length (with Bucket)                    | mm               | 9338                     | 9562               | 9562   | 9259                         | 9483               | 9483   | 335                        |
|   | ft/in            | 30'8"                    | 31'5"              | 31'5"  | 30'5"                        | 31'2"              | 31'2"  | 1'1"                       |
| <b>B†</b> Overall Height with Bucket at Maximum Lift        | mm               | 6284                     | 6284               | 6284   | 6205                         | 6205               | 6205   | 336                        |
|   | ft/in            | 20'8"                    | 20'8"              | 20'8"  | 20'5"                        | 20'5"              | 20'5"  | 1'1"                       |
| Loader Clearance Circle with Bucket at Carry Position       | mm               | 15 229                   | 15 407             | 15 407 | 15 180                       | 15 359             | 15 359 | 324                        |
|   | ft/in            | 50'0"                    | 50'7"              | 50'7"  | 49'10"                       | 50'5"              | 50'5"  | 1'0.8"                     |
| Static Tipping Load, Straight (With Tire Deflection)*       | kg               | 18 600                   | 18 415             | 18 651 | 18 081                       | 17 899             | 18 257 | -1608                      |
|   | lb               | 40,996                   | 40,588             | 41,108 | 39,851                       | 39,450             | 40,240 | -3,545                     |
| Static Tipping Load, Straight (No Tire Deflection)*         | kg               | 19 856                   | 19 668             | 19 906 | 19 317                       | 19 131             | 19 507 | -1771                      |
|   | lb               | 43,764                   | 43,348             | 43,873 | 42,576                       | 42,166             | 42,993 | -3,903                     |
| Static Tipping Load, Articulated (With Tire Deflection)*    | kg               | 16 264                   | 16 076             | 16 297 | 15 749                       | 15 565             | 15 907 | -1444                      |
|   | lb               | 35,845                   | 35,433             | 35,919 | 34,712                       | 34,307             | 35,060 | -3,181                     |
| Static Tipping Load, Articulated (No Tire Deflection)*      | kg               | 17 521                   | 17 332             | 17 553 | 16 992                       | 16 807             | 17 163 | -1620                      |
|   | lb               | 38,617                   | 38,200             | 38,687 | 37,452                       | 37,043             | 37,828 | -3,570                     |
| Breakout Force  | kN               | 198                      | 197                | 210    | 203                          | 202                | 216    | -6                         |
|   | lbf              | 44,634                   | 44,325             | 47,205 | 45,788                       | 45,479             | 48,572 | -1,378                     |
| Operating Weight*   | kg               | 25 010                   | 25 147             | 24 984 | 25 327                       | 25 464             | 25 301 | 84                         |
|   | lb               | 55,120                   | 55,424             | 55,065 | 55,819                       | 56,123             | 55,763 | 186                        |

\*Static tipping loads and operating weights shown are based on a machine configuration with Michelin 26.5R25 XHA2 L3 radial tires, full fluids, operator, standard counterweight, cold start, roading fenders, Product Link, manual diff lock/open axles (front/rear), power train guard, secondary steering and sound suppression.

\*\*Maximum values.

(With Tire Deflection) Full compliance to ISO 14397-1:2007 Sections 1 thru 6, which requires 2% verification between calculations and testing.

(No Tire Deflection) Compliance to ISO 14397-1:2007 Sections 1 thru 5.

†Illustration shown with Dimension charts.

QC = Quick Coupler

# 972M Wheel Loader Specifications

## Operating Specifications with Buckets

| Linkage  | Bucket Type     | Standard Linkage           |                    |        |                            | Standard Linkage            |                    |        |
|--|-----------------|----------------------------|--------------------|--------|----------------------------|-----------------------------|--------------------|--------|
|  |                 | Material Handling – Pin On |                    |        | High Lift Linkage Change** | General Purpose – Fusion QC |                    |        |
| Edge Type  |                 | Bolt-On Cutting Edges      | Teeth and Segments | Tips   |                            | Bolt-On Cutting Edges       | Teeth and Segments | Tips   |
| Capacity – Rated   | m <sup>3</sup>  | 4.60                       | 4.60               | 4.40   | —                          | 4.90                        | 4.90               | 4.70   |
|  | yd <sup>3</sup> | 6.00                       | 6.00               | 5.75   | —                          | 6.41                        | 6.41               | 6.15   |
| Capacity – Rated at 110% Fill Factor                         | m <sup>3</sup>  | 5.06                       | 5.06               | 4.84   | —                          | 5.39                        | 5.39               | 5.17   |
|  | yd <sup>3</sup> | 6.62                       | 6.62               | 6.33   | —                          | 7.05                        | 7.05               | 6.76   |
| Width  | mm              | 3220                       | 3271               | 3271   | —                          | 3220                        | 3271               | 3271   |
|  | ft/in           | 10'6"                      | 10'8"              | 10'8"  | —                          | 10'6"                       | 10'8"              | 10'8"  |
| <b>16</b> † Dump Clearance at Maximum Lift and 45° Discharge | mm              | 3120                       | 2957               | 2957   | 336                        | 2899                        | 2744               | 2744   |
|  | ft/in           | 10'2"                      | 9'8"               | 9'8"   | 1'1"                       | 9'6"                        | 9'0"               | 9'0"   |
| <b>17</b> † Reach at Maximum Lift and 45° Discharge          | mm              | 1251                       | 1378               | 1378   | 23                         | 1449                        | 1586               | 1586   |
|  | ft/in           | 4'1"                       | 4'6"               | 4'6"   | 0.9"                       | 4'9"                        | 5'2"               | 5'2"   |
| Reach at Level Lift Arm and Bucket Level                     | mm              | 2979                       | 3184               | 3184   | 274                        | 2940                        | 3145               | 3145   |
|  | ft/in           | 9'9"                       | 10'5"              | 10'5"  | 11"                        | 9'7"                        | 10'3"              | 10'3"  |
| <b>A</b> † Digging Depth                                     | mm              | 103                        | 103                | 73     | -5                         | 115                         | 115                | 85     |
|  | in              | 4"                         | 4"                 | 2.8"   | -0.2"                      | 4.5"                        | 4.5"               | 3.3"   |
| <b>12</b> † Shipping Length (with Bucket)                    | mm              | 9280                       | 9504               | 9504   | 335                        | 9200                        | 9425               | 9425   |
|  | ft/in           | 30'6"                      | 31'3"              | 31'3"  | 1'1"                       | 30'3"                       | 31'0"              | 31'0"  |
| <b>B</b> † Overall Height with Bucket at Maximum Lift        | mm              | 6162                       | 6162               | 6162   | 336                        | 6126                        | 6126               | 6126   |
|  | ft/in           | 20'3"                      | 20'3"              | 20'3"  | 1'1"                       | 20'2"                       | 20'2"              | 20'2"  |
| Loader Clearance Circle with Bucket at Carry Position        | mm              | 15 197                     | 15 375             | 15 375 | 334                        | 15 081                      | 15 255             | 15 255 |
|  | ft/in           | 49'11"                     | 50'6"              | 50' 6" | 1'1"                       | 49'6"                       | 50'1"              | 50'1"  |
| Static Tipping Load, Straight (With Tire Deflection)*        | kg              | 18 412                     | 18 229             | 18 468 | -1598                      | 19 411                      | 19 225             | 19 590 |
|  | lb              | 40,580                     | 40,177             | 40,704 | -3,521                     | 42,781                      | 42,372             | 43,177 |
| Static Tipping Load, Straight (No Tire Deflection)*          | kg              | 19 640                     | 19 453             | 19 695 | -1757                      | 20 885                      | 20 695             | 21 079 |
|  | lb              | 43,286                     | 42,875             | 43,409 | -3,871                     | 46,032                      | 45,612             | 46,460 |
| Static Tipping Load, Articulated (With Tire Deflection)*     | kg              | 16 081                     | 15 896             | 16 119 | -1429                      | 16 920                      | 16 732             | 17 082 |
|  | lb              | 35,442                     | 35,035             | 35,526 | -3,149                     | 37,293                      | 36,878             | 37,649 |
| Static Tipping Load, Articulated (No Tire Deflection)*       | kg              | 17 313                     | 17 127             | 17 351 | -1601                      | 18 387                      | 18 197             | 18 562 |
|  | lb              | 38,159                     | 37,749             | 38,242 | -3,528                     | 40,526                      | 40,106             | 40,912 |
| Breakout Force   | kN              | 201                        | 199                | 213    | -7                         | 198                         | 196                | 209    |
|  | lbf             | 45,174                     | 44,865             | 47,882 | -1,647                     | 44,570                      | 44,204             | 47,022 |
| Operating Weight*  | kg              | 24 964                     | 25 101             | 24 938 | 85                         | 25 283                      | 25 421             | 25 258 |
|  | lb              | 55,019                     | 55,323             | 54,963 | 186                        | 55,724                      | 56,028             | 55,668 |

\*Static tipping loads and operating weights shown are based on a machine configuration with Michelin 26.5R25 XHA2 L3 radial tires, full fluids, operator, standard counterweight, cold start, roading fenders, Product Link, manual diff lock/open axles (front/rear), power train guard, secondary steering and sound suppression.

\*\*Maximum values.

(With Tire Deflection) Full compliance to ISO 14397-1:2007 Sections 1 thru 6, which requires 2% verification between calculations and testing.

(No Tire Deflection) Compliance to ISO 14397-1:2007 Sections 1 thru 5.

†Illustration shown with Dimension charts.

QC = Quick Coupler



# 972M Wheel Loader Specifications

## 972M Operating Specifications with Buckets – Aggregate Handler

| Package  |                 | Aggregate Handler        |                       |                       |
|--|-----------------|--------------------------|-----------------------|-----------------------|
| Bucket Type  |                 | General Purpose – Pin On |                       |                       |
| Edge Type  |                 | Bolt-On Cutting Edges    | Bolt-On Cutting Edges | Bolt-On Cutting Edges |
| Capacity – Rated   | m <sup>3</sup>  | 5.10                     | 5.30                  | 5.50                  |
|  | yd <sup>3</sup> | 6.67                     | 6.93                  | 7.19                  |
| Capacity – Rated at 110% Fill Factor                         | m <sup>3</sup>  | 5.61                     | 5.83                  | 6.05                  |
|  | yd <sup>3</sup> | 7.34                     | 7.63                  | 7.91                  |
| Width  | mm              | 3357                     | 3357                  | 3357                  |
|  | ft/in           | 11'0"                    | 11'0"                 | 11'0"                 |
| <b>16</b> † Dump Clearance at Maximum Lift and 45° Discharge | mm              | 3127                     | 3100                  | 3072                  |
|  | ft/in           | 10'3"                    | 10'2"                 | 10'0"                 |
| <b>17</b> † Reach at Maximum Lift and 45° Discharge          | mm              | 1375                     | 1399                  | 1424                  |
|  | ft/in           | 4'6"                     | 4'7"                  | 4'8"                  |
| Reach at Level Lift Arm and Bucket Level                     | mm              | 3046                     | 3083                  | 3121                  |
|  | ft/in           | 9'11"                    | 10'1"                 | 10'2"                 |
| <b>A</b> † Digging Depth                                     | mm              | 108                      | 108                   | 108                   |
|  | in              | 4.2"                     | 4.2"                  | 4.2"                  |
| <b>12</b> † Shipping Length (with Bucket)                    | mm              | 9037                     | 9074                  | 9112                  |
|  | ft/in           | 29'8"                    | 29'10"                | 29'11"                |
| <b>B</b> † Overall Height with Bucket at Maximum Lift        | mm              | 6235                     | 6272                  | 6293                  |
|  | ft/in           | 20'6"                    | 20'7"                 | 20'8"                 |
| Loader Clearance Circle with Bucket at Carry Position        | mm              | 15 362                   | 15 382                | 15 403                |
|  | ft/in           | 50'5"                    | 50'6"                 | 50'7"                 |
| Static Tipping Load, Straight (With Tire Deflection)*        | kg              | 19 316                   | 19 242                | 19 172                |
|  | lb              | 42,574                   | 42,409                | 42,255                |
| Static Tipping Load, Straight (No Tire Deflection)*          | kg              | 20 669                   | 20 600                | 20 537                |
|  | lb              | 45,556                   | 45,403                | 45,263                |
| Static Tipping Load, Articulated (With Tire Deflection)*     | kg              | 16 799                   | 16 726                | 16 658                |
|  | lb              | 37,026                   | 36,865                | 36,716                |
| Static Tipping Load, Articulated (No Tire Deflection)*       | kg              | 18 165                   | 18 098                | 18 036                |
|  | lb              | 40,036                   | 39,888                | 39,753                |
| Breakout Force   | kN              | 190                      | 185                   | 180                   |
|  | lbf             | 42,755                   | 41,650                | 40,573                |
| Operating Weight*  | kg              | 25 790                   | 25 832                | 25 870                |
|  | lb              | 56,840                   | 56,933                | 57,016                |

\*Static tipping loads and operating weights shown are based on a machine configuration with Michelin 26.5R25 XHA2 L3 radial tires, full fluids, operator, standard counterweight, cold start, roading fenders, Product Link, manual diff lock/open axles (front/rear), power train guard, secondary steering and sound suppression.

\*\*Maximum values.

(With Tire Deflection) Full compliance to ISO 14397-1:2007 Sections 1 thru 6, which requires 2% verification between calculations and testing.

(No Tire Deflection) Compliance to ISO 14397-1:2007 Sections 1 thru 5.

†Illustration shown with Dimension charts.

# 972M Wheel Loader Standard and Optional Equipment

## Standard and Optional Equipment

Standard and optional equipment may vary. Consult your Cat dealer for details.

|  | Standard | Optional |   | Standard | Optional |
|--|----------|----------|---|----------|----------|
| <b>POWER TRAIN</b>   |          |          | <b>OPERATOR ENVIRONMENT</b>   |          |          |
| Axles, ecology drains  | ✓        |          | Air conditioner, heater, and defroster (auto temp and fan)  | ✓        |          |
| Axles, manually actuated differential lock front axle, open differential rear axle   | ✓        |          | Beverage holders (2) with storage compartment for cell phone/MP3 player   | ✓        |          |
| Axles – automatic front/rear differential locks, axle oil cooler, extreme temperature seals, seal guards   |          | ✓        | Bucket/work tool function lockout   | ✓        |          |
| Brake wear indicators  | ✓        |          | Cab air filter  | ✓        |          |
| Brakes, full hydraulic enclosed wet-disc with Integrated Braking System (IBS)  | ✓        |          | Cab, pressurized and sound suppressed (ROPS/FOPS)   | ✓        |          |
| Cat Clean Emissions Module (CEM) with Diesel Particulate Filter (DPF) and Diesel Exhaust Fluid (DEF) tank and pump (Tier 4 Final/Stage V models) | ✓        |          | Cab tie-off   | ✓        |          |
| Economy mode (selectable)  | ✓        |          | Coat hook (2)   | ✓        |          |
| Engine, Cat C9.3 – meets Tier 3/ Stage IIIA equivalent or Tier 4 Final/ Stage V emission standards   | ✓        |          | Cover, HVAC metallic  |          | ✓        |
| Fan, radiator, on demand   | ✓        |          | Door, remote opening system   |          | ✓        |
| Fan, VPF (variable pitch fan), automatic and manual control  |          | ✓        | EH controls, SAL (single axis lever) lift and tilt function   | ✓        |          |
| Fuel priming pump (electric)   | ✓        |          | EH controls, joystick lift and tilt – additional integrated roller switches for 3 <sup>rd</sup> and 4 <sup>th</sup> functions |          | ✓        |
| Fuel/water separator   | ✓        |          | EH controls, SAL 3 <sup>rd</sup> function – additional roller switch for 4 <sup>th</sup> function                             |          | ✓        |
| Parking brake, disc and caliper  | ✓        |          | EH parking brake  | ✓        |          |
| Precleaner, engine air intake  | ✓        |          | Ergonomic cab access ladders and handrails  | ✓        |          |
| Radiator, high debris with wider fin spacing   |          | ✓        | Filter, carbon fresh air  |          | ✓        |
| Switch, transmission neutralizer lockout   | ✓        |          | Horn, electric  | ✓        |          |
| Torque converter, locking clutch with free wheel stator  | ✓        |          | Light, two dome (cab)   | ✓        |          |
| Transmission, automatic planetary power shift (4F/4R)  | ✓        |          | Mirrors, heated rearview external with integrated spot mirrors  |          | ✓        |
| <b>CAT® CONNECT TECHNOLOGY</b>   |          |          | Mirrors, rearview external with integrated spot mirrors   | ✓        |          |
| Detect technologies:   |          |          | Multi-function 18 cm (7 in) color touch-screen display for rear vision camera, clock and machine parameters                   | ✓        |          |
| Rear vision camera   | ✓        |          | Post mounted membrane 16 switch keypad  | ✓        |          |
| Cat rear object detection  |          | ✓        | Precleaner, HVAC  |          | ✓        |
| Link technologies:   |          |          | Precleaner, HVAC (RESPA)  |          | ✓        |
| Product Link   | ✓        |          | Radio, AM/FM/USB/MP3 Bluetooth  |          | ✓        |
| VIMS™  |          | ✓        | Radio, AM/FM/CD/USB/MP3 Bluetooth   |          | ✓        |
| Payload technologies: Advanced Productivity subscription, Cat Production Measurement 2.0, Printer, Aggregate Autodig                             |          | ✓        | Radio, AM/FM/CD/USB/MP3 Bluetooth with Satellite Sirius and XM  |          | ✓        |
| Machine security system  |          | ✓        | Radio, CB ready   |          | ✓        |
|  |          |          | Radio ready (entertainment) includes antenna, speakers and converter (12V, 10-amp)  | ✓        |          |
|  |          |          | Receptacles (2), 12V  | ✓        |          |

(continued on next page)

# 972M Wheel Loader Standard and Optional Equipment

## Standard and Optional Equipment (continued)

Standard and optional equipment may vary. Consult your Cat dealer for details.

|   | Standard | Optional |
|---|----------|----------|
| <b>OPERATOR ENVIRONMENT (continued)</b>   |          |          |
| Roof, metallic  |          | ✓        |
| Seat, cloth, air suspension   | ✓        |          |
| Seat, suede/cloth, air suspension, heated   |          | ✓        |
| Seat, leather/cloth, air suspension, heated/cooled  |          | ✓        |
| Seat belt, 51 mm (2 in) retractable, with indicator   | ✓        |          |
| Seat belt, 76 mm (3 in) retractable, with indicator   |          | ✓        |
| Steering, EH joystick, speed sensing with force feedback  | ✓        |          |
| Steering, EH wheel with directional FNR shifter and gear selector – additional FNR with implement controls  |          | ✓        |
| Steering, secondary   |          | ✓        |
| Sun visor, front  | ✓        |          |
| Sun visor, rear   |          | ✓        |
| Viscous mounts  | ✓        |          |
| Wet-arm wipers/washers front and rear, intermittent front wiper   | ✓        |          |
| Windows, rubber mounted   |          | ✓        |
| Window, sliding (left and right sides)  | ✓        |          |
| Windows, with front guard   |          | ✓        |
| Windows, with heavy duty front guard  |          | ✓        |
| Windows, with full guards front, rear and sides   |          | ✓        |
| <b>ELECTRICAL AND LIGHTING</b>  |          |          |
| Alarm, back-up  | ✓        |          |
| Alternator, 145-amp brushed   | ✓        |          |
| Auxiliary halogen cab-mounted work lights (four additional) or  |          | ✓        |
| Auxiliary front HI LED (two additional) and two additional auxiliary rear LED cab mounted work lights with 2 LED work lights in the radiator grill and LED front turn signals. Also includes replacement of the standard four halogen cab-mounted work lights with four LED work lights (the standard offering and only roading light available is the halogen roading light) |          | ✓        |
| Batteries (2), maintenance free 1,400 CCA   | ✓        |          |
| External seat belt indicator light  |          | ✓        |
| Ignition key; start/stop switch   | ✓        |          |

|   | Standard | Optional |
|---|----------|----------|
| <b>ELECTRICAL AND LIGHTING (continued)</b>  |          |          |
| Lighting system: four halogen work lights (cab mounted), two halogen roading lights (with signals), two halogen rear vision lights (hood mounted) | ✓        |          |
| Main disconnect switch  | ✓        |          |
| Receptacle start (cables not included)  | ✓        |          |
| Reversing strobes   |          | ✓        |
| Speed limiter – 20 km/h (Europe only)   |          | ✓        |
| Starter, electric, heavy duty   | ✓        |          |
| Starting and charging system (24V)  | ✓        |          |
| Warning amber strobe beacon   |          | ✓        |
| <b>FLUIDS</b>   |          |          |
| Premixed extended life coolant with freeze protection to -34°C (-29°F)  | ✓        |          |
| Premixed extended life coolant with freeze protection to -50°C (-58°F)  |          | ✓        |
| <b>HYDRAULICS</b>   |          |          |
| Hoses, Cat XT™  | ✓        |          |
| Hydraulic system, load sensing  | ✓        |          |
| Oil sampling valves   | ✓        |          |
| 3 <sup>rd</sup> function with Ride Control – standard linkage, high lift linkage  |          | ✓        |
| 4 <sup>th</sup> function with Ride Control – standard linkage, high lift linkage  |          | ✓        |
| Remote diagnostic pressure taps   | ✓        |          |
| Ride control, 2V  | ✓        |          |
| Steering, load sensing  | ✓        |          |
| <b>LINKAGE</b>  |          |          |
| High lift   |          | ✓        |
| Kickout, lift and tilt, automatic   | ✓        |          |
| Quick coupler ready   |          | ✓        |
| Z-bar, cast crosstube/tilt lever  | ✓        |          |
| <b>STARTERS, BATTERIES, AND ALTERNATORS</b>   |          |          |
| Cold start – 120V   |          | ✓        |
| Cold start – 240V   |          | ✓        |
| <b>WORK TOOLS</b>   |          |          |
| Forks, logging  |          | ✓        |
| Forks, pallet   |          | ✓        |
| Fusion quick coupler  |          | ✓        |
| Performance Series buckets  |          | ✓        |

(continued on next page)

# 972M Wheel Loader Standard and Optional Equipment

## Standard and Optional Equipment *(continued)*

Standard and optional equipment may vary. Consult your Cat dealer for details.

|   | Standard | Optional |   | Standard | Optional |
|---|----------|----------|---|----------|----------|
| <b>COMPUTERIZED MONITORING SYSTEM</b>   |          |          | <b>OTHER STANDARD AND OPTIONAL EQUIPMENT</b>                            |          |          |
| With following gauges:  | ✓        |          | Auto idle shutdown  | ✓        |          |
| Speedometer/tachometer  |          |          | Cat Autolube System   |          | ✓        |
| Digital gear range indicator  |          |          | Ecology drains for engine, transmission, and hydraulics                 | ✓        |          |
| Diesel Exhaust Fluid (DEF) level (Tier 4 Final/Stage V models)                      |          |          | Ether aid ready   | ✓        |          |
| Temperature: engine coolant, hydraulic oil, transmission oil                        |          |          | Fenders, front with mud-flap/rear with extension                        | ✓        |          |
| Fuel level  |          |          | Fenders, roading  |          | ✓        |
| With following warning indicators:  | ✓        |          | Filters: fuel, engine air, engine oil, hydraulic oil, transmission      | ✓        |          |
| Regeneration  |          |          | Fuel cooler   | ✓        |          |
| Temperature: axle oil, engine intake manifold                                       |          |          | Grease zerks  | ✓        |          |
| Pressure: engine oil, fuel pressure hi/low, primary steering oil, service brake oil |          |          | Grill, airborne debris  | ✓        |          |
| Battery voltage hi/low  |          |          | Guard, power train  |          | ✓        |
| Engine air filter restriction   |          |          | Hitch, drawbar with pin   | ✓        |          |
| Hydraulic oil filter restriction  |          |          | Hood, non-metallic power tilting  | ✓        |          |
| Hydraulic oil low   |          |          | Oil change, high speed engine   |          | ✓        |
| Parking brake   |          |          | Platform, window washing  | ✓        |          |
| DEF low level (Tier 4 Final/Stage V models)   |          |          | Precleaner, turbine   |          | ✓        |
| Transmission filter bypass  |          |          | Precleaner, trash   |          | ✓        |
|   |          |          | Precleaner rain cap   | ✓        |          |
|   |          |          | Service centers (electrical and hydraulic)                              | ✓        |          |
|   |          |          | Sight gauges: engine coolant, hydraulic oil, and transmission oil level | ✓        |          |
|   |          |          | Toolbox   | ✓        |          |
|   |          |          | Vandalism protection caplocks   | ✓        |          |
|   |          |          | Wheel chocks  |          | ✓        |
|   |          |          | <b>OTHER CONFIGURATIONS</b>   |          |          |
|   |          |          | Aggregate handler   |          | ✓        |
|   |          |          | Industrial and waste handler  |          | ✓        |
|   |          |          | Steel Mill  |          | ✓        |



オフロード法2014年  
基準適合



For more complete information on Cat products, dealer services, and industry solutions, visit us on the web at [www.cat.com](http://www.cat.com)

Materials and specifications are subject to change without notice. Featured machines in photos may include additional equipment. See your Cat dealer for available options.

© 2019 Caterpillar. All Rights Reserved. CAT, CATERPILLAR, LET'S DO THE WORK, their respective logos, Cat Connect, Product Link, VIMS, XT, Fusion, "Caterpillar Yellow", the "Power Edge" trade dress as well as corporate and product identity used herein, are trademarks of Caterpillar and may not be used without permission.

AEXQ2430-00 (1-2019)  
2019 Product Update  
Global excluding EU

