



FG Wilson
Corporate Profile

“Power For A New Generation”

www.fgwilson.com

A photograph of an industrial facility, possibly a power plant or refinery, with large pipes, metal structures, and a yellow piece of equipment in the foreground. A large blue semi-transparent shape is overlaid on the right side of the image, containing white text.

FG Wilson is all about **relationships** - Strong relationships with you our **customers**, our **dealer network** and **suppliers**.

ELECTRIFYING THE **WORLD**



There are many ways to store or produce energy but when it comes to guaranteeing standby or emergency electrical power, in terms of cost, flexibility and responsiveness, there's no better option than a generator set from FG Wilson.

Our products range from ready-to-run generator sets to complete bespoke turnkey power systems with remote monitoring, all with lifetime product support from our dealers.

Based in the UK for over 50 years, FG Wilson has worked together with a multitude of customers in all environments globally and since 1990 have installed more than 600,000 generator sets around the world, with as much combined power generation capacity as the entire UK power grid.

WORLD CLASS PRODUCTS



In the early 1980s, FG Wilson was among the first to bring mass-scale production to generator sets. Today our designs have moved on into a new century and that philosophy of our founders remains as strong as ever:

Self-contained generator sets which are easy to install and operate, designed for a long and productive working life and which represent value for money.



The FG Wilson product range covers power outputs from 6.8 – 2,500 kVA. An extensive list of options means that our standard range can be configured in a huge number of ways. From day one, we've always thought of a generator set as an entire package. This kind of thinking has helped us do some truly innovative things, like being one of the first volume manufacturers to integrate an entire generator set package inside the enclosure, well over 30 years ago.

PRODUCTS AS UNIQUE AS YOU ARE



Some of our customers can walk into a dealership and drive away with a ready-to-run generator set, while for others it's a major project. That means working with consultants on load requirements, finding the right generator set, designing the complete layout of the plant room including exhaust and fuel systems, installation and commissioning.

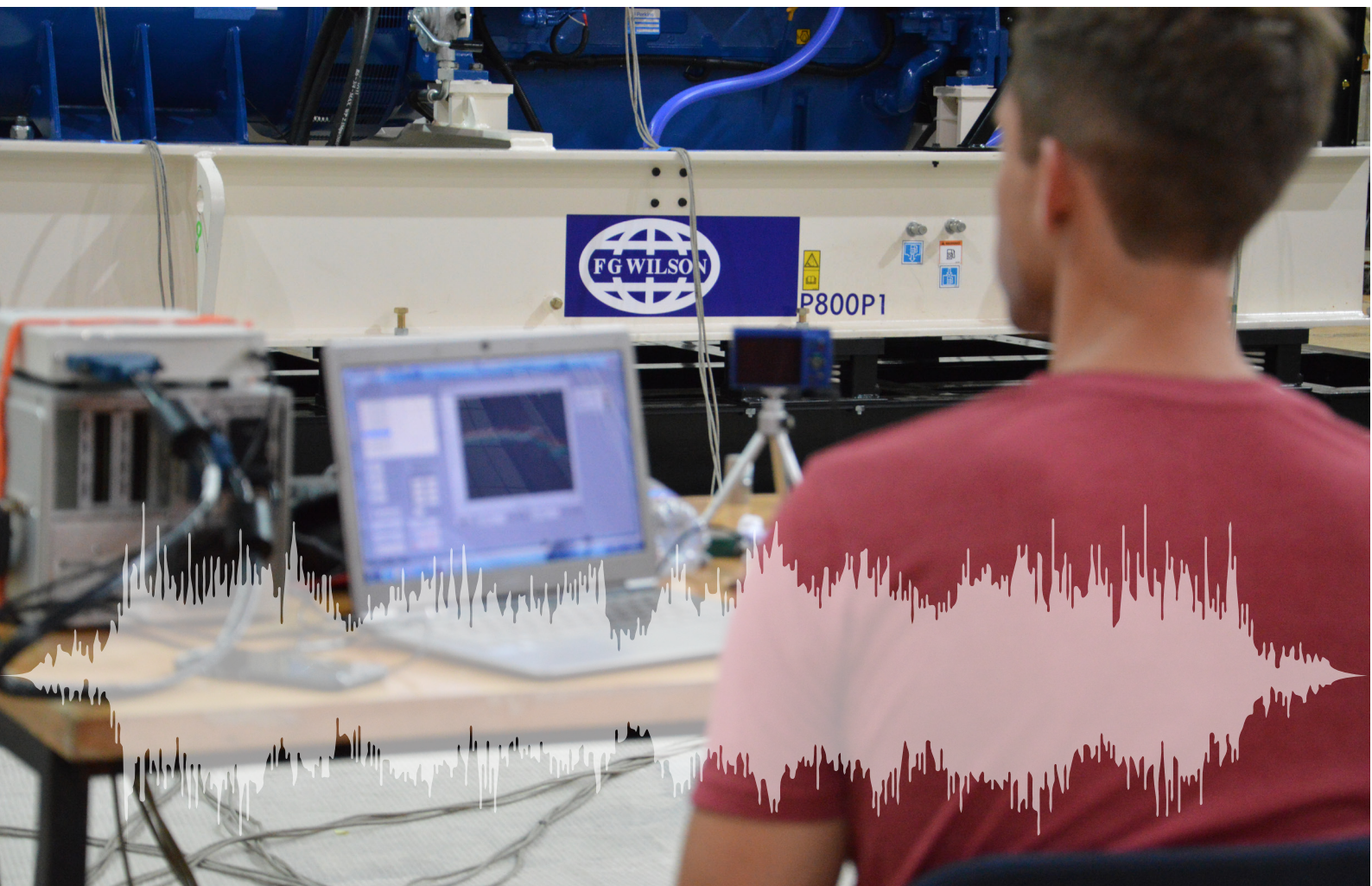
When you entrust your power project to us, you receive the full support of more than 300 skilled technicians who nurture your project from initial design and manufacture through to installation and commissioning.

That ability to design bespoke power projects has always been a core element of FG Wilson. In the early 1970s, FG Wilson built a strong name designing, building and commissioning mini power stations in the Middle East, often in very inhospitable operating environments.

SEISMIC CERTIFICATION

In many parts of the world, seismic certification is becoming a key requirement for generator sets, especially when they are installed in large buildings or facilities in urban areas.

Working together with our dealer FGW Jeneratör, we achieved full IBC seismic certification in 2015 on our P800 and P1700 generator sets. This year we will also have full IBC seismic certification across our 730 – 2500 kVA range at 50 Hz.





GLOBAL MANUFACTURING FACILITIES

Our manufacturing facilities are based in Europe, India, China and Brazil, which ensures we build our products close to our customers. Every generator set is designed with our unrivalled engineering expertise and coupled with our innovative production methods to deliver power systems with outstanding quality and reliability.

Every facility manufacturing our products operates to the same best-in-class standards with common processes and management. All have ISO 9001 and ISO 14001 certification of our manufacturing and environmental standards. This means that our products and services are safe, reliable and with world-class quality.

All FG Wilson products worldwide, are fully supported by the FG Wilson warranty programme and by your local FG Wilson dealer.



The FG Wilson **Universal Power range** has been designed with a strong focus on operating costs. It's perfect for telecoms users or indeed for anyone who needs to install a generator set in places which are remote or difficult to access.

From top to bottom, the range is designed to make life easier for you:

- » **1,000 hour service intervals mean you need to make fewer site visits**
- » **600, 1,000 & 2,000 litre fuel tanks so you need to refuel less often**
- » **Three levels of sound attenuation ensure that the range meets local noise regulations and that you can choose the enclosure which is right for your needs**
- » **New LCD control panels with optional remote communications make day to day operations simpler**
- » **The ability to monitor units from the Telecom NOC maximises uptime and means you can prepare for more effective site visits**

The range has undergone rigorous validation testing and is built for a long and productive life.

POWERING THE MOST **REMOTE** LOCATIONS

TECHNICAL DATA

Generator Set Model	50 Hz (kVA/kW)		60 Hz (kVA/kW)		Engine Alternator	Fuel Tank (L)	50 Hz (L/hr)		60 Hz (L/hr)		L (mm)	W (mm)	H (mm)	W (kg)
	PR	SB	PR	SB			PR	SB	PR	SB				
P7.5-1S (skid)	6.8/6.8	7.5/7.5	-	-	403A-11G1 LLB1114B	-	2.6	2.9	-	-	1500	860	895	242
P7.5-4S (skid)	6.8/6.8	7.5/7.5	8/8	8.8/8.8	403D-11G LL1114D	-	2.5	2.8	2.9	3.3	1500	860	895	242
P7.5-4S	6.8/6.8	7.5/7.5	8/8	8.8/8.8	403D-11G LLB1114D	62	2.5	2.8	2.9	3.3	1400	620	996	308
P9.5-1 (skid)	8.5/6.8	9.5/7.6	-	-	403A-11G1 LL1114B	-	2.6	2.9	-	-	1500	860	895	235
P9.5-4 (skid)	8.5/6.8	9.5/7.6	10/8	11/8.8	403D-11G LL1114B	-	2.6	2.9	3	3.4	1500	860	895	235
P9.5-4	8.5/6.8	9.5/7.6	10/8	11/8.8	403D-11G LL1114B	62	2.6	2.9	3	3.4	1400	620	996	308
P11-6S (skid)	10/10	11/11	12/12	13/13	403D-15G LLB1114F	-	3.6	4.1	4.3	4.8	1500	860	895	319
P11-6S	10/10	11/11	12/12	13/13	403D-15G LLB1114F	62	3.6	4.1	4.3	4.8	1400	620	1054	384
P12-1S (skid)	11/11	12/12	-	-	403A-15G2 LLB1114F	-	4.0	4.5	-	-	1550	620	929	310
P13.5-6 (skid)	12.5/10	13.5/10.8	15/12	16.5/13.2	403D-15G LL1114D	-	3.7	4	4.3	4.9	1500	860	895	312
P13.5-6	12.5/10	13.5/10.8	15/12	16.5/13.2	403D-15G LL1114D	62	3.7	4	4.3	4.9	1400	620	1054	308
P14-6S (skid)	13/13	14/14	15.5/15.5	17/17	404D-22G1 LLB1114L	-	4.3	4.6	5.2	5.6	1500	860	895	381
P14-6S	13/13	14/14	15.5/15.5	17/17	404D-22G1 LLB1114L	66	4.3	4.6	5.2	5.6	1500	620	1115	441
P16-1 (skid)	14.5/11.6	16/12.8	-	-	403A-15G2 LL1114M	-	4.1	4.7	-	-	1500	860	895	339
P16.5-1S (skid)	15/15	16.5/16.5	-	-	404A-22G1 LLB1114M	-	5	5.6	-	-	1500	860	895	389
P16.5-6S (skid)	15/15	16.5/16.5	17.6/17.6	19.4/19.4	404D-22G LLB1114M	-	4.9	5.5	5.7	6.3	1500	860	895	389
P16.5-6S	15/15	16.5/16.5	17.6/17.6	19.4/19.4	404D-22G LLB1114M	66	4.9	5.5	5.7	6.3	1500	620	1115	454
P18-6 (skid)	16.5/13.2	18/14.4	20/16	22/17.6	404D-22G1 LL1114H	-	4.4	4.8	5.2	5.7	1500	860	895	376
P18-6	16.5/13.2	18/14.4	20/16	22/17.6	404D-22G1 LL1114H	66	4.4	4.8	5.2	5.7	1500	620	1115	441
P22-1 (skid)	20/16	22/17.6	-	-	404A-22G1 LL1114M	-	5.4	6.1	-	-	1500	620	1115	389
P22-6 (skid)	20/16	22/17.6	22.5/18	25/20	404D-22G LL1114M	-	5.3	5.9	5.8	6.5	1500	860	895	389
P22-6	20/16	22/17.6	22.5/18	25/20	404D-22G LL1114M	66	5.3	5.9	5.8	6.5	1500	620	1115	454
P26-3S	24/24	26/26	27/27	30/30	1103A-33G1 LLB1514J	71	6.9	7.5	8.1	9	1570	760	1229	699
P26-6S	24/24	26/26	-	-	1103D-33G3 LLB1514J	71	7.4	7.9	-	-	1570	760	1229	699
P33-3	30/24	33/26.4	33.8/27	37.5/30	1103A-33G1 MJB 160 MB4	71	6.9	7.7	8.1	9.1	1570	760	1229	712

TECHNICAL DATA

Generator Set Model	50 Hz (kVA/kW)		60 Hz (kVA/kW)		Engine Alternator	Fuel Tank (L)	50 Hz (L/hr)		60 Hz (L/hr)		L (mm)	W (mm)	H (mm)	W (kg)
	PR	SB	PR	SB			PR	SB	PR	SB				
P33-6	30/24	33/26.4	-	-	1103D-33G3 MJB 160 MB4	71	7.4	8.2	-	-	1570	760	1229	712
P40-3S	36/36	40/40	40/40	45/45	1103A-33TG1 LLB1514P	145	10.2	11.4	11.8	13.7	1680	760	1336	779
P40-4S	36/36	40/40	-	-	1103C-33TG2/3 LLB1514P	145	10.2	11.3	-	-	1680	760	1336	771
P50-3	45/36	50/40	50/40	56.3/45	1103A-33TG1 MJB 200 SB4	145	10.5	11.7	11.9	13.4	1680	760	1336	810
P50-4	45/36	50/40	-	-	1103C-33TG2/3 MJB 200 SB4	145	10.6	11.8	-	-	1680	760	1336	802
P50-5S	45/45	50/50	55/55	60/60	1103A-33TG2 LLB3114D	145	12.6	14.2	15.8	17.3	1680	760	1336	912
P55-3	50/40	55/44	56.3/45	62.5/50	1103A-33TG2 MJB 200 SB4	145	11.6	12.8	13.7	15.2	1680	760	1336	810
P55-4	50/40	55/44	-	-	1104C-44TG2/3 MJB 200 SB4	180	15.9	17.4	-	-	1870	840	1336	864
P55-6S	50/50	55/55	-	-	1104D-44TG2/3 LLB3114D	180	16.5	18.2	-	-	1870	840	1336	941
P65-5	60/48	65/52	68.8/55	75/60	1103A-33TG2 MJB 200 MA4	145	13.7	15	16.3	18	1680	760	1336	852
P65-6	60/48	65/52	-	-	1104D-44TG2/3 MJB 200 MA4	180	16.6	18.3	-	-	1870	840	1336	906
P88-3	80/64	88/70.4	90/72	100/80	1104A-44TG2 MJB 200 LA4	180	18.2	20.1	21	23.2	1870	840	1333	1002
P88-6	80/64	88/70.4	-	-	1104D-E44TAG1 MJB 200 LA4	218	20.2	21.7	-	-	1980	890	1398	1135
P90-3S	82/82	90/90	90/90	99.5/99.5	1104C-44TAG2 LLB3114H	218	22.1	24.3	26	28.8	1980	890	1374	1131
P90-6S	82/82	90/90	-	-	1104D-E44TAG2 LLB3114H	218	24.2	25.7	-	-	1980	890	1449	1208
P110-3	100/80	110/88	113/90.4	125/100	1104C-44TAG2 MJB 225 MA4	218	21.7	23.9	26.1	29	1980	890	1317	1132
P110-6	100/80	110/88	-	-	1104D-E44TAG2 MJB 225 MA4	218	23.8	25.5	-	-	1980	890	1435	1252
P150-5	135/108	150/120	150/120	165/132	1106A-70TG1 MJB 225 LA4	327	29.9	33.4	33.1	36.7	2450	1010	1554	1428
P165-5	150/120	165/132	169/135	188/150	1106A-70TAG2 MJB 250 MA4	327	32.4	35.1	37.9	41.6	2450	1010	1554	1566
P165-6	150/120	165/132	-	-	1106D-E70TAG2 MJB 250 MA4	327	35.2	37.8	-	-	2450	1010	1554	1611
P175-2	160/128	175/140	-	-	1106D-E70TAG3 MJB 250 MA4	327	36.9	39.7	-	-	2450	1010	1554	1611
P200-3	180/144	200/160	200/160	219/175	1106A-70TAG3 MJB 250 MB4	394	39.8	43.2	46.5	50.6	2510	1010	1640	1650
P200-6	180/144	200/160	-	-	1106D-E70TAG4 MJB 250 MB4	394	41.3	45.2	-	-	2510	1010	1640	1624
P220-3	200/160	220/176	-	-	1106A-70TAG4 MJB 250 LA4	394	45.1	49	-	-	2510	1010	1640	1735

TECHNICAL DATA

Generator Set Model	50 Hz (kVA/kW)		60 Hz (kVA/kW)		Engine Alternator	Fuel Tank (L)	50 Hz (L/hr)		60 Hz (L/hr)		L (mm)	W (mm)	H (mm)	W (kg)
	PR	SB	PR	SB			PR	SB	PR	SB				
P249-5	-	-	225/180	250/200	1506A-E88TAG2 MJB 250 LA4	528	-	-	49.4	54.3	2662	1071	1818	2056
P250-5	230/184	250/200	-	-	1506A-E88TAG2 MJB 250 LB4	528	46.9	50.3	-	-	2662	1071	1818	2096
P275-2	250/200	275/220	-	-	1506A-E88TAG3 MJB 250 LB4	528	56.2	60.3	-	-	2662	1071	1818	2096
P275-5	250/200	275/220	-	-	1506A-E88TAG3 MJB 250 LB4	528	53.2	58.5	-	-	2662	1071	1818	2096
P300-4	275/220	300/240	-	-	1506D-E88TAG4 FG26A230	528	60.2	64.3	-	-	2675	1071	1818	2110
P300-5	275/220	300/240	-	-	1506A-E88TAG4 FG26A230	528	59	64.5	-	-	2675	1071	1818	2110
P313-5	-	-	281/225	313/250	1506A-E88TAG3 MJB 250 LB4	464	-	-	60.2	66.8	2662	1071	1818	2096
P330-5	300/240	330/264	-	-	1506A-E88TAG5 FG26A250	528	62.8	70.1	-	-	2785	1071	1818	2261
P344-5	-	-	313/250	344/275	1506A-E88TAG4 FG26A250	528	-	-	66.7	73.7	2785	1071	1818	2261
P375-4	-	-	338/270	375/300	1506D-E88TAG4 FG26A250	528	-	-	73.3	80.5	2785	1071	1818	2261
P375-5	-	-	338/270	375/300	1506A-E88TAG5 FG26A250	528	-	-	71.9	80.5	2785	1071	1818	2261
P400-3	350/280	400/320	-	-	2206A-E13TAG2 FG29A280	888	69.6	79	-	-	3800	1131	2156	3161
P438-3	-	-	400/320	438/350	2206A-E13TAG5 FG29A280	888	-	-	80.9	88	3800	1131	2156	3161
P450-2	400/320	450/360	-	-	2206D-E13TAG3A FG29A320	888	89.1	98.1	-	-	3800	1131	2156	3233
P450-3	400/320	450/360	-	-	2206A-E13TAG3 FG29A320	888	78.2	87.2	-	-	3800	1131	2156	3253
P500-3	455/364	500/400	-	-	2506A-E15TAG1 FG29A360	888	91.3	101.5	-	-	3800	1131	2215	3661
P501-3	-	-	438/350	500/400	2206A-E13TAG6 FG29A320	888	-	-	87.8	99.4	3800	1131	2156	3253

TECHNICAL DATA

Generator Set Model	50 Hz (kVA/kW)		60 Hz (kVA/kW)		Engine Alternator	Fuel Tank (L)	50 Hz (L/hr)		60 Hz (L/hr)		L (mm)	W (mm)	H (mm)	W (kg)
	PR	SB	PR	SB			PR	SB	PR	SB				
P550-2	500/400	550/440	-	-	2506D-E15TAG2 FG29A400	1083	104	113.9	-	-	3787	1481	2193	3832
P550-3	500/400	550/440	-	-	2506A-E15TAG2 FG29A400	888	97.2	107.4	-	-	3800	1131	2215	3699
P563-3	-	-	513/410	563/450	2506A-E15TAG3 FG29A360	888	-	-	101.6	111.3	3800	1131	2215	3661
P605-3	550/440	605/484	-	-	2806A-E18TAG1 FG33A450	1132	107.4	119	-	-	3900	1461	2156	4202
P625-3	-	-	569/455	625/500	2506A-E15TAG4 FG29A400	888	-	-	112.8	123.2	3800	1131	2215	3699
P660-3	600/480	660/528	-	-	2806A-E18TA-G1A FG33A500	1132	118.5	131.1	-	-	3900	1461	2156	4342
P688-3	-	-	625/500	688/550	2806A-E18TA-G1A FG33A500	1132	-	-	124.6	138.2	3900	1461	2156	4342
P715-3	650/520	715/572	-	-	2806A-E18TAG2 FG33A560	1132	127.6	142	-	-	3900	1461	2156	4522
P750-3	-	-	681/545	750/600	2806A-E18TAG3 FG33A500	1132	-	-	138.9	155	3900	1461	2156	4342
P780-1	706/780	565/624	-	-	2806A-E18T-TAG4 LL7224J	1702	144.2	160.6			4130	1690	2569	4979
P813-1	Coming Soon													
P850-1	770/850	616/680	-	-	2806A-E18T-TAG5	1702	160.3	179.9	-	-	4130	1690	2569	5040
P895-1	Coming Soon													
P938-1	Coming Soon													

TECHNICAL DATA

Generator Set Model	50 Hz (kVA/kW)		60 Hz (kVA/kW)		Engine Alternator	Fuel Tank (L)	50 Hz (L/hr)		60 Hz (L/hr)		L (mm)	W (mm)	H (mm)	W (kg)
	PR	SB	PR	SB			PR	SB	PR	SB				
P730P1 / P800E1	730/584	800/640	735/588	844/675	4006-23TAG2A LL7224J	1494	157.4	171.8	174.3	201.1	4280	1690	2379	5934
P800P1 / P900E1	800/640	900/720	835/668	938/750	4006-23TAG3A LL7224L	1494	171.2	193.4	198.9	224.4	4280	1690	2379	5995
P900P1 / P1001E1	-	-	900/720	1000/800	4008TAG1 LL7224N	-	-	-	198.3	223.2	4821	2046	2375	7201
P910P1 / P1000E1	910/728	1000/800	-	-	4008TAG1A LL7224N	-	192.7	214.9	-	-	4967	2162	2227	6820
P1000P1 / P1100E1	1000/800	1100/880	-	-	4008TAG2A LL7224P	-	214.1	240	-	-	4967	2162	2227	6820
P1001P1 / P1101E1	-	-	1000/800	1100/880	4008TAG2 LL7224P	-	-	-	221.2	244.4	4821	2046	2375	7250
P1125P1 / P1250E1	1125/900	1250/1000	-	-	4008-30TAG3 LL8224H	-	240.1	266.3	-	-	4789	2257	2069	7753
P1250P3 / P1375E3	1250/1000	1375/1100	1250/1000	1375/1100	4012-46TWG2A LL8224H/L	-	258	284.9	266	298	4788	1895	2450	9079
P1350P1 / P1500E1	1350/1080	1500/1200	1350/1080	1500/1200	4012-46TWG3A LL8224L/P	-	279.2	313.4	289	324	4888	1895	2450	9697
P1500P3 / P1650E3	1500/1200	1650/1320	-	-	4012-46TAG2A LL8224N	-	296.6	326.3	-	-	5095	1900	2435	10385
P1700P1 / P1875E1	1700/1360	1875/1500	-	-	4012-46TAG3A LL9324F	-	349.7	390.2	-	-	5259	2192	2453	11207
P1750 / P1925E	1750/1400	1925/1540	-	-	4016TAG LL9224F	-	361.5	399.9	-	-	5752	2300	3020	15455
P1825 / P2000E	1825/1460	2000/1600	-	-	4016TAG1A LL9224F	-	378.2	419.9	-	-	5752	2300	3020	15455
P2000 / P2250E	2000/1600	2249/1799	-	-	4016TAG2A LL9224H	-	425.7	486.8	-	-	5752	2300	3020	15680
P2000-1 / P2000-1E	1850/1480	2000/1600	-	-	4016-61TRG1 LL9324F	-	385.4	410.8	-	-	5839	2176	2605	12528
P2250-1 / P2250-1E	2000/1600	2250/1800	-	-	4016-61TRG2 LL9324H	-	418.1	470.8	-	-	5839	2176	2605	12528
P2500-1 / P2500-1E	2250/1800	2500/2000	-	-	4016-61TRG3 LL9324P	-	470.6	528.4	-	-	6038	2180	2900	13380



PROFESSIONAL RENTAL OPERATOR

Designed for users seeking lower cost solutions to meet their temporary power needs, our dedicated Professional Rental Operator (PRO) range provides fuel efficient, easy to operate and robust generator sets ideally suited to meet the rigorous requirements of your temporary power needs globally.

Providing a flexible solution, the PRO range can be easily switched between 50 and 60 Hz, while maintaining emissions and noise certification at both frequencies, allowing one machine to satisfy varying load requirements across diverse applications.

Additionally our fully sound attenuated rental enclosures provide excellent noise reduction ensuring their suitability for residential projects.



Key Features:

- » EU IIIa compliance
- » Fuel optimised offering
- » 50 Hz / 60 Hz switchable
- » Viscous clutch fan drive*
- » Exceptional noise performance
- » New PowerWizard 2.1+ panel

TECHNICAL DATA

Model	Engine	Alternator	50 Hz		60 Hz	
			kVA	kW	kVA	kW
PRO30-1	1103A-33TG1	LL1514F	30	24	35.8	28.6
PRO30-2	1103D-33TG2	LL1514F	30	24	35.8	28.6
PRO60-2	1104D-44TG2	LL1514P	60	48	68	54
PRO100-1	1104A-44TAG2	LL3114F	100	80	117	94
PRO100-2	1104D-E44TAG2	LL3114F	100	80	100	80
PRO150-1	1106A-70TAG2	LL3114J	150	120	173	172
PRO150-2	1106D-E70TAG3	LL3114J	150	120	185	148
PRO275-2*	1506D-E88TAG4	LL5114J	275	220	344	275
PRO300-1*	1506A-E88TAG4	LL5100	300	240	344	275
PRO500-1*	2506A-E15TAG2	LL6114F	500	400	525	420
PRO500-2*	2506D-E15TAG2	LL6114F	500	400	525	420

Model	Length (mm)	Width (mm)	Height (mm)	Weight (kg)	
				Lube oil & Coolant	Lube oil, Coolant & Fuel
PRO30-1	2150	1120	1583	1230	1385
PRO30-2	2150	1120	1583	1230	1385
PRO60-2	2610	1120	1777	1715	2029
PRO100-1	2770	1120	1847	2027	2456
PRO100-2	2770	1120	1847	2027	2456
PRO150-1	3620	1120	2226	2547	3124
PRO150-2	3620	1120	2226	2547	3124
PRO275-2	4065	1400	2124	3880	4518
PRO300-1	4065	1400	2124	3880	4518
PRO500-1	4930	1620	2167	5288	5986
PRO500-2	5100	1920	2300	5977	6879

CONTROL

IS EVERYTHING

*“our panels might be complex on the inside,
but on the outside you’d never know it”*

We've always believed that control systems are among the most important components of a generator set. From the outset we've focused on designing reliable and intuitive control panels which our customers are comfortable working with.

FG Wilson generator sets come with a full range of plug and play digital, automatic and synchronising control panel systems.



Our control and load management options include:

- » Multiple generator set synchronisation
- » Co-generation mains parallel
- » Intelligent transfer systems
- » Human Machine Interface (HMI) displays
- » Utility protection
- » Remote monitoring
- » Sophisticated high-end building and load management controls assembled around Programmable Logic Controllers (PLCs)

INSTANT RESPONSE

The FG Wilson range of intelligent Load Transfer Panels constantly monitor the quality of your mains electricity supply and respond immediately to any power outages. With flexible, upgradeable options and a high level of functionality, FG Wilson transfer panels give you automatic control of your generator set 24/7, 365 days a year.

Features

- » Automatically provides generator set start on detection of mains failure, overvoltage or loss of phase
- » Automatic mains re-transfer function
- » Flexible, upgradeable options
- » Test operations / sequences via panel or remotely
- » Manual switch operation
- » LED functions display showing generator set / mains availability and switch position
- » LCD display for voltage and timers
- » Load transfer panel range meets ATS IEC 60947-6-1 standard

Benefits

- » Pre-programmed enabling the panel to run on installation with the ability to customise if necessary
- » Fast acting switches reduce transfer times between generator set and utility power
- » Available from 63 – 3200A
- » Seamless integration with FG Wilson digital control panels



FG Wilson

MORE THAN METAL



When you buy an FG Wilson generator set, you can be confident that it has undergone extensive prototype and validation testing. Before a new product reaches one of our customers, it has seen rigorous testing on load acceptance, cooling, vibration, noise and water ingress. We don't accept performance data without validating it ourselves in the environmental conditions which our products will see. When you buy one of our products, we can safely say that wherever it will be operating, it will have been tested for that environment.

Our validation facilities include Europe's largest fully automated hemi-anechoic chamber with state-of-the-art acoustic research and test capabilities.



LONGLIFE PRODUCTS LIFELONG SUPPORT

Our dealers are all trained and supported by us, which makes them experts in serving product maintenance needs, including emergency breakdown coverage and routine servicing.

Developed over 50 years, we have a local network of dealers on every continent, supporting our customers with everything from product selection to installation and a lifetime of service.

This means just one call for technical advice, genuine parts and all ongoing maintenance support.



GENUINE PARTS

Make your investment go further by ensuring you always use FG Wilson Genuine Parts.

FG Wilson Genuine Parts are designed to complement the other components of your generator set, optimising product performance, fuel efficiency and life span.

All FG Wilson Genuine Parts are fully tested by us and come with our standard warranty. They connect seamlessly with all the other components of your FG Wilson generator set and are fitted by our fully trained dealer network who have full access to our electronic technical library. Dealer support is backed up by a parts operation stocking more than 12,000 parts products and delivering up to 2 million parts a year to customers on every continent.

WHAT MAKES FG WILSON DIFFERENT?



- Our products and how we design them
- Our local dealer coverage
- How we support our products all through their life time



www.fgwilson.com

QUALITY COMES AS STANDARD



Since 1990 we've installed well over 600,000 generator sets with a total capacity of almost 90 GW - more than the total installed mains electricity capacity of a country like the UK. With that number of machines across the world, we take no risks with quality.

This means we only buy components which we have carefully tested and that we work with world-leading manufacturing processes, right through to extensive post production testing and pre-delivery inspections. No one is more serious about quality.

All our manufacturing facilities have been awarded ISO 9001 and ISO 14001 certification in recognition of our manufacturing and environmental standards. This means that our products and services are safe, reliable and of world-class quality.

With enterprise-wide manufacturing standards such as MQ 12005 Gold and Caterpillar Production Systems (CPS), we use efficient manufacturing processes to produce cost-effective, quality products.

Our facility in Tianjin, China, has also been awarded LEED Gold certification (Leadership in Energy and Environmental Design) for its environmental standards and energy efficiency.

TECHNICAL DATA

Generator Set Model	50 Hz (kVA/kW)		60 Hz (kVA/kW)		Engine Alternator	Fuel Tank (L)	50 Hz (L/hr)		60 Hz (L/hr)		L (mm)	W (mm)	H (mm)	W (kg)
	PR	SB	PR	SB			PR	SB	PR	SB				
P56-1	45/36	50/40	50/40	56.3/45	1103A-33TG1 GTA 201 AE20	145	10.8	12	11.9	13.6	1680	760	1333	826
P75-1	60/48	65/52	68.8/55	75/60	1103A-33TG2 GTA 202 AE32	145	13.7	14.9	16.2	17.7	1741	760	1333	828
P100-1	80/64	88/70.4	90/72	100/80	1104A-44TG2 GTA 202 AE36	180	18.2	20.1	21.2	23.6	1870	840	1333	1032
P125-1	100/80	110/88	113/90.4	125/100	1104C-44TAG2 GTA 202 AS36	218	22.2	24.5	26.1	29.3	1980	890	1376	1083
P169-1	135/108	150/120	149.5/119.6	168.8/135	1106A-70TG1 GTA 251 AE27	327	30.3	34	33.1	37.8	2450	1010	1544	1443
P218-3	180/144	200/160	196.3/157	217.5/174	1106A-70TAG3 GTA 252 AE37	394	40.1	43.3	45.2	48.7	2510	1010	1640	1563
M260-1	-	-	240/192	260/208	MWM 7.3P GTA 252 AI44	457	-	-	50	57.4	2512	1030	1700	1775
S450-1	-	-	410/328	450/360	DC13072A GTA 311 AI41	250	-	-	80.4	88.8	3480	1120	2075	2953
S550-1	-	-	500/400	550/440	DC13072A GTA 311 AI41	250	-	-	100.7	113.1	3480	1120	2075	2953
P500-5	455/364	500/400	-	-	2506A-E15TAG1 GTA 312 AE49	888	94.9	104.1	-	-	3800	1131	2215	3775
P550-5	500/400	550/440	-	-	2506A-E15TAG2 GTA 312 AE52	888	100.2	110.9	-	-	3800	1131	2215	3825
P563-5	-	-	512.5/410	562.5/450	2506A-E15TAG3 GTA 311 AE41	888	-	-	101.7	111.2	3800	1131	2215	3598
P605-5	550/440	605/484	-	-	2806A-E18TAG1 GTA 312 AEDI	1132	107.9	120.1	-	-	3900	1461	2156	4162
P625-5	-	-	568.8/455	625/500	2506A-E15TAG4 GTA 311 AE41	888	-	-	113.3	124.4	3800	1131	2215	3598
P660-5	600/480	660/528	-	-	2806A-E18TA-G1A GTA 312 AEDJ	1132	119.9	132.9	-	-	3900	1461	2156	4182
P688-5	-	-	625/500	687.5/550	2806A-E18TA-G1A GTA 312 AE47	1132	-	-	122.7	136.3	3900	1461	2156	4051
P700-5	635/508	700/560	-	-	2806A-E18TAG2 GTA 312 AEDJ	1132	126.2	141	-	-	3900	1461	2156	4182
P750-5	-	-	681.3/545	750/600	2806A-E18TAG3 GTA 312 AEDK	1132	138.8	153.7	-	-	3900	1461	2156	4102



UNDERSTANDING YOUR **CUSTOMER NEEDS**

At FG Wilson, we've been building and installing generator sets for half a century. The most important things we've learned in that time are that every project has its own individual needs and that working through a project means not just building the metal but also building relationships and understanding people who work with generator sets.

Once you start using our generator sets on-site, you'll see that they are robust, highly corrosion resistant, fully weather resistant and allow easy access for maintenance.

When your power needs are more challenging than normal specifications, FG Wilson's Power Solutions Team is dedicated to providing bespoke solutions to meet complex power needs on a project-by-project basis. Our Solutions offerings include diesel, gas, bi-fuel and high voltage generator sets. Key generator set systems including generator controls, PLCs, synchronising, cooling systems and enclosures can all be customised to suit any requirement.

