



# Medium Wheel Loaders

## Waste Handler Arrangements

# Technical Specifications

### Engine



- Cat engine with ACERT Technology.
- The power ratings apply at the stated speed when tested under the reference conditions for the specified standards.
- The net power advertised is the power available at the flywheel when the engine is equipped with fan, alternator, air cleaner and aftertreatment.
- The gross power advertised is with the fan at maximum speed.

	<b>950M</b>		<b>962M</b>		<b>966M</b>		<b>966M XE</b>	
Engine Model	Cat C7.1 ACERT		Cat C7.1 ACERT		Cat C9.3 ACERT		Cat C9.3 ACERT	
Displacement	7.01 L	428 in <sup>3</sup>	7.01 L	428 in <sup>3</sup>	9.3 L	568 in <sup>3</sup>	9.3 L	568 in <sup>3</sup>
Maximum Gross Power								
SAE J1995	187 kW	250 hp	202 kW	271 hp	232 kW	311 hp	—	—
Engine Speed	2,100 rpm		2,100 rpm		1,800 rpm		—	
Maximum Net Power								
SAE J1349	171 kW	230 hp	186 kW	250 hp	206 kW	276 hp	222 kW	298 hp
Engine Speed	2,100 rpm		2,100 rpm		1,700 rpm		1,600 rpm	
Peak Gross Torque								
SAE J1995	1235 N·m	911 lbf-ft	1249 N·m	921 lbf-ft	1599 N·m	1,179 lbf-ft	1728 N·m	1,275 lbf-ft
Engine Speed	1,300 rpm		1,350 rpm		1,200 rpm		1,200 rpm	
Maximum Net Torque								
SAE J1349	1163 N·m	858 lbf-ft	1172 N·m	865 lbf-ft	1527 N·m	1,126 lbf-ft	1618 N·m	1,193 lbf-ft
Engine Speed	1,300 rpm		1,350 rpm		1,000 rpm		1,000 rpm	

(continued on next page)

# M Series Wheel Loaders Specifications

## Engine (continued)



- Cat engine with ACERT Technology.
- The power ratings apply at the stated speed when tested under the reference conditions for the specified standards.
- The net power advertised is the power available at the flywheel when the engine is equipped with fan, alternator, air cleaner and aftertreatment.
- The gross power advertised is with the fan at maximum speed.

	<b>972M</b>		<b>972M XE</b>		<b>980M</b>	
Engine Model	Cat C9.3 ACERT		Cat C9.3 ACERT		Cat C13 ACERT	
Displacement	9.3 L	568 in <sup>3</sup>	9.3 L	568 in <sup>3</sup>	12.5 L	763 in <sup>3</sup>
Maximum Gross Power						
SAE J1995	251 kW	337 hp	—	—	317 kW	425 hp
Engine Speed	1,800 rpm		—		1,700 rpm	
Maximum Net Power						
SAE J1349	223 kW	299 hp	232 kW	311 hp	288 kW	386 hp
Engine Speed	1,700 rpm		1,600 rpm		1,700 rpm	
Peak Gross Torque						
SAE J1995	1728 N·m	1,275 lbf-ft	1728 N·m	1,275 lbf-ft	2206 N·m	1,627 lbf-ft
Engine Speed	1,200 rpm		1,200 rpm		1,200 rpm	
Maximum Net Torque						
SAE J1349	1654 N·m	1,220 lbf-ft	1618 N·m	1,193 lbf-ft	2054 N·m	1,515 lbf-ft
Engine Speed	1,000 rpm		1,000 rpm		1,100 rpm	

## Cab/Sound



ROPS	ISO 3471:2008
FOPS	ISO 3449:2005 Level II

The sound values indicated below are for specific operating conditions only. Machine and operator sound levels will vary at different engine and/or cooling fan speeds. Hearing protection may be needed when the machine is operated with a cabin that is not properly maintained, or when the doors and/or windows are open for extended periods or in a noisy environment.

	<b>950M/962M</b>	<b>966M/972M</b>	<b>966M XE/972M XE</b>	<b>980M</b>
With Cooling Fan Speed at Maximum Value:				
Operator Sound Pressure Level (ISO 6396:2008)	70 dB(A)	70 dB(A)	67 dB(A)	75 dB(A)
Exterior Sound Power Level (ISO 6395:2008)*	107 dB(A)	109 dB(A)	107 dB(A)	112 dB(A)
Exterior Sound Pressure Level (SAE J88:2013)**	75 dB(A)	76 dB(A)	76 dB(A)	78 dB(A)

\*For a standard machine configuration, measured according to the procedures specified with the cooling fan speed set at maximum value.

\*\*Distance of 15 m (49.2 ft), moving forward in second gear ratio.

# M Series Wheel Loaders Specifications

## Loader Hydraulic System



- Mono-block main hydraulic valve design reduces weight and has 40 percent fewer leak points than previous designs.
- Auxiliary third and fourth hydraulic functions can be easily added at the factory or in the field with the addition of a second remote valve.
- Ride control system now has two accumulators enabling it to be more effective over a greater payload range, increasing productivity and operator efficiency due to a better ride.

	<b>950M</b>		<b>962M</b>		<b>966M</b>		<b>966M XE</b>	
Maximum Flow – Implement Pump	286 L/min	76 gal/min	286 L/min	76 gal/min	360 L/min	95 gal/min	385 L/min	102 gal/min
3 <sup>rd</sup> Function Max Flow*	240 L/min	63 gal/min	240 L/min	63 gal/min	240 L/min	63 gal/min	240 L/min	63 gal/min
4 <sup>th</sup> Function Max Flow*	240 L/min	63 gal/min	240 L/min	63 gal/min	240 L/min	63 gal/min	240 L/min	63 gal/min
Maximum Working Pressure – Implement Pump	29 300 kPa	4,250 psi	29 300 kPa	4,250 psi	31 000 kPa	4,496 psi	31 000 kPa	4,496 psi
3 <sup>rd</sup> Function Max Working Pressure*	21 780 kPa	3,159 psi	21 780 kPa	3,159 psi	21 780 kPa	3,159 psi	21 780 kPa	3,159 psi
4 <sup>th</sup> Function Max Working Pressure*	21 780 kPa	3,159 psi	21 780 kPa	3,159 psi	21 780 kPa	3,159 psi	21 780 kPa	3,159 psi
Cycle Times with Rated Payload								
Raise from Carry Position	5.1 s		5.2 s		6.1 s		6.1 s	
Dump at Maximum Raise	1.5 s		1.5 s		1.4 s		1.4 s	
Lower, Empty, Float Down	2.3 s		2.7 s		2.6 s		2.6 s	
Total Cycle Time	8.9 s		9.4 s		10.1 s		10.1 s	

	<b>972M</b>		<b>972M XE</b>		<b>980M</b>	
Maximum Flow – Implement Pump	360 L/min	95 gal/min	385 L/min	102 gal/min	449 L/min	119 gal/min
3 <sup>rd</sup> Function Max Flow*	240 L/min	63 gal/min	240 L/min	63 gal/min	240 L/min	63 gal/min
4 <sup>th</sup> Function Max Flow*	240 L/min	63 gal/min	240 L/min	63 gal/min	N/A	N/A
Maximum Working Pressure – Implement Pump	31 000 kPa	4,496 psi	31 000 kPa	4,496 psi	34 300 kPa	4,975 psi
3 <sup>rd</sup> Function Max Working Pressure*	21 780 kPa	3,159 psi	21 780 kPa	3,159 psi	21 780 kPa	3,159 psi
4 <sup>th</sup> Function Max Working Pressure*	21 780 kPa	3,159 psi	21 780 kPa	3,159 psi	N/A	N/A
Cycle Times with Rated Payload						
Raise from Carry Position	6.1 s		6.1 s		5.3 s	
Dump at Maximum Raise	1.5 s		1.5 s		1.7 s	
Lower, Empty, Float Down	3.1 s		3.1 s		3.1 s	
Total Cycle Time	10.7 s		10.7 s		10.1 s	

\*Optional.

# M Series Wheel Loaders Specifications

## Transmission



- Standard lock-up clutch torque converter matched with the engine power and hydraulics to improve performance and fuel efficiency.

	950M/962M		966M		972M		966M XE/972M XE		980M	
Forward 1	6.9 km/h	4.3 mph	6.5 km/h	4.0 mph	6.7 km/h	4.2 mph	6.7 km/h	4.2 mph	6.9 km/h	4.3 mph
Forward 2	12 km/h	7.5 mph	13 km/h	8.1 mph	13.1 km/h	8.1 mph	12.6 km/h	7.8 mph	13.3 km/h	8.3 mph
Forward 3	19.3 km/h	12.0 mph	23.5 km/h	14.6 mph	23.2 km/h	14.4 mph	22.1 km/h	13.7 mph	23.5 km/h	14.6 mph
Forward 4	25.7 km/h	16.0 mph	39.5 km/h	24.5 mph	39.5 km/h	24.5 mph	39.5 km/h	24.5 mph	39.5 km/h	24.5 mph
Forward 5	39.5 km/h	24.5 mph	N/A	N/A	N/A	N/A	N/A	N/A	N/A	N/A
Reverse 1	6.9 km/h	4.3 mph	7.1 km/h	4.4 mph	7.6 km/h	4.7 mph	6.7 km/h	4.2 mph	7.8 km/h	4.8 mph
Reverse 2	12 km/h	7.5 mph	14.4 km/h	8.9 mph	15.0 km/h	9.3 mph	12.6 km/h	7.8 mph	15.2 km/h	9.4 mph
Reverse 3	25.7 km/h	16.0 mph	25.9 km/h	16.1 mph	26.5 km/h	16.5 mph	28.0 km/h	17.4 mph	26.9 km/h	16.7 mph
Reverse 4	N/A	N/A	39.5 km/h	24.5 mph	39.5 km/h	24.5 mph	N/A	N/A	39.5 km/h	24.5 mph

- 950M/962M – Maximum travel speed in standard vehicle with empty bucket and standard L3 tires with 787 mm (31 in) roll radius.
- 966M/966M XE/972M/972M XE – Maximum travel speed in standard vehicle with empty bucket and standard L3 tires with 826 mm (32.5 in) roll radius.
- 980M – Maximum travel speed in standard vehicle with empty bucket and standard L4 tires with 933 mm (37 in) roll radius. Do not exceed machine speed of 20 km/h (12 mph) for machines equipped with tires heavier than Tread Type L-5.

## Service Refill Capacities

	950M/962M		966M/972M		966M XE/972M XE		980M	
Fuel Tank	275 L	72.6 gal	302 L	79.8 gal	302 L	79.8 gal	426 L	112.5 gal
Diesel Exhaust Fluid (DEF) Tank	16 L	4.2 gal	16.8 L	4.4 gal	16.8 L	4.4 gal	21 L	5.5 gal
Cooling System	59 L	15.6 gal	71.6 L	18.9 gal	71.6 L	18.9 gal	53 L	14.0 gal
Engine Crankcase	22 L	5.8 gal	24.5 L	6.5 gal	24.5 L	6.5 gal	37 L	9.8 gal
Transmission (gear box)	43 L	11.4 gal	58.5 L	15.5 gal	63 L	16.6 gal	77 L	20.3 gal
Axles								
Front	43 L	11.4 gal	57 L	15.1 gal	57 L	15.1 gal	84 L	22.0 gal
Rear	43 L	11.4 gal	57 L	15.1 gal	57 L	15.1 gal	84 L	22.0 gal
Hydraulic Tank	125 L	33.0 gal	125 L	33.0 gal	125 L	33.0 gal	153 L	40.0 gal

# M Series Wheel Loaders Specifications

## Power Train



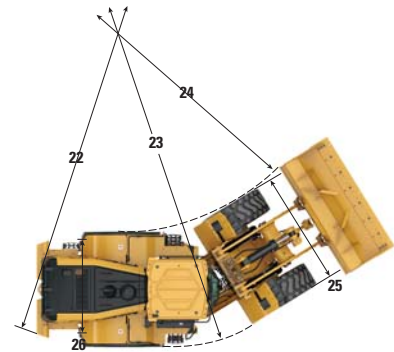
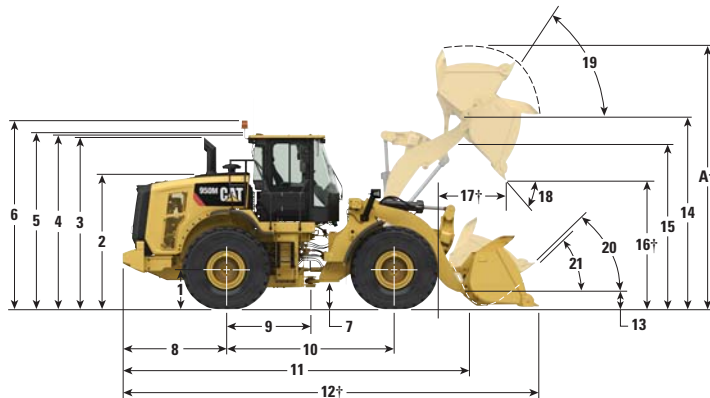
- M Series axles are designed to handle extreme applications resulting in reliable performance and durable life.
- The rear axle can oscillate to  $\pm 13$  degrees helping to ensure all four wheels stay on the ground providing stability even in the roughest terrain for excellent stability and traction.
- External caliper disc parking brakes mounted to the input shaft of the front axles. Since they are external, they do not have the inefficiencies of enclosed wet parking brakes due to brake discs running in oil nor is there any oil to change reducing fuel and maintenance costs. External caliper parking brakes are easily accessible for inspection and service.

	<b>950M/962M</b>	<b>966M</b>	<b>966M XE</b>
Front Axle	Fixed	Fixed	Fixed
Traction Aid (standard)	Manual Locking Differential	Manual Locking Differential	Manual Locking Differential
Traction Aid (optional)	Auto Locking Differential	Auto Locking Differential	Auto Locking Differential
Rear Axle	Oscillating	Oscillating	Oscillating
Oscillation Angle by Tire Size			
23.5R25	$\pm 13$ degrees		
26.5R25		$\pm 13$ degrees	$\pm 13$ degrees
29.5R25			
Traction Aid (standard)	Open differential	Open differential	Open differential
Traction Aid (optional)	Auto Locking Differential	Auto Locking Differential	Auto Locking Differential
Brakes			
Service	Inboard wet disc	Inboard wet disc	Inboard wet disc
Park	Spring applied hydraulically released	Spring applied hydraulically released	Spring applied hydraulically released
	<b>972M</b>	<b>972M XE</b>	<b>980M</b>
Front Axle	Fixed	Fixed	Fixed
Traction Aid (standard)	Manual Locking Differential	Manual Locking Differential	Open differential
Traction Aid (optional)	Auto Locking Differential	Auto Locking Differential	Limited slip
Rear Axle	Oscillating	Oscillating	Oscillating
Oscillation Angle by Tire Size			
23.5R25			
26.5R25	$\pm 13$ degrees	$\pm 13$ degrees	
29.5R25			$\pm 13$ degrees
Traction Aid (standard)	Open differential	Open differential	Open differential
Traction Aid (optional)	Auto Locking Differential	Auto Locking Differential	Limited slip
Brakes			
Service	Inboard wet disc	Inboard wet disc	Inboard wet disc
Park	Spring applied hydraulically released	Spring applied hydraulically released	Spring applied hydraulically released

# M Series Wheel Loaders Specifications

## 950M/962M Waste Handler Dimensions

All dimensions are approximate.



	950M Waste Handler				962M Waste Handler			
	Standard Lift		High Lift		Standard Lift		High Lift	
	mm	ft/in	mm	ft/in	mm	ft/in	mm	ft/in
1 Height to Axle Centerline	798	2'7"	798	2'7"	798	2'7"	798	2'7"
2 Height to Top of Hood	2748	9'0"	2748	9'0"	2745	9'0"	2745	9'0"
3 Height to Top of Exhaust Pipe	3464	11'4"	3464	11'4"	3462	11'4"	3462	11'4"
4 Height to Top of ROPS	3502	11'6"	3502	11'6"	3498	11'6"	3498	11'6"
5 Height to Top of Product Link Antenna	3704	12'2"	3704	12'2"	3704	12'2"	3704	12'2"
6 Height to Top of Warning Beacon	3798	12'6"	3798	12'6"	3798	12'6"	3798	12'6"
7 Ground Clearance	418	1'4"	418	1'4"	415	1'4"	415	1'4"
8 Center Line of Rear Axle to Edge of Counterweight	1942	6'4"	2071	6'10"	2147	7'1"	2186	7'2"
9 Center Line of Rear Axle to Hitch	1675	5'6"	1675	5'6"	1675	5'6"	1675	5'6"
10 Wheelbase	3350	11'0"	3350	11'0"	3350	11'0"	3350	11'0"
11 Overall Length (without bucket)	7099	23'4"	7559	24'10"	7222	23'9"	7559	24'10"
12 Shipping Length (with bucket level on ground)*†	8824	29'0"	9284	30'6"	8947	29'5"	9284	30'6"
13 Hinge Pin Height at Carry Height	698	2'3"	833	2'9"	720	2'4"	830	2'9"
14 Hinge Pin Height at Maximum Lift	4078	13'5"	4578	15'0"	4286	14'1"	4575	15'0"
15 Lift Arm Clearance at Maximum Lift	3331	10'11"	3685	12'1"	3528	11'6"	3682	12'0"
16 Dump Clearance at Maximum Lift and 45° Discharge*†	2518	8'3"	3024	9'11"	2735	8'11"	3024	9'11"
17 Reach at Maximum Lift and 45° Discharge*†	1685	5'6"	1720	5'7"	1619	5'3"	1720	5'7"
18 Dump Angle at Maximum Lift and Dump (on stops)*	47 degrees		44 degrees		45 degrees		43 degrees	
19 Rack Back at Maximum Lift*	59 degrees		59 degrees		59 degrees		59 degrees	
20 Rack Back at Carry Height*	49 degrees		49 degrees		49 degrees		49 degrees	
21 Rack Back at Ground*	36 degrees		40 degrees		37 degrees		37 degrees	
22 Clearance Circle (radius) to Counterweight	6186	20'4"	6186	20'4"	6186	20'4"	6186	20'4"
23 Clearance Circle (radius) to Outside of Tires	5989	19'8"	5989	19'8"	5989	19'8"	5989	19'8"
24 Clearance Circle (radius) to Inside of Tires	3215	10'7"	3215	10'7"	3215	10'7"	3215	10'7"
25 Width over Tires – Maximum (unloaded)	2753	9'1"	2753	9'1"	2753	9'1"	2753	9'1"
Width over Tires – Maximum (loaded)	2760	9'1"	2760	9'1"	2760	9'1"	2760	9'1"
26 Tread Width	2140	7'0"	2140	7'0"	2140	7'0"	2140	7'0"

\*With 6.1 m<sup>3</sup> (8.0 yd<sup>3</sup>) pin-on waste bucket with steel bolt-on cutting edges (see Operating Specifications for other Buckets) and rear guard counterweight.

†Dimensions are listed in Operating Specification charts.

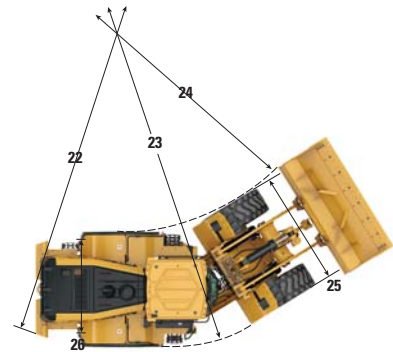
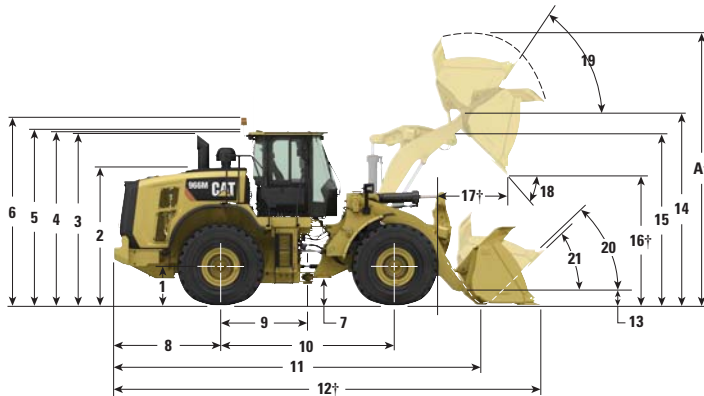
All height and tire related dimensions are with Brawler 23.5-25 HPS Solidflex Smooth tires (see Tire Option charts for other tires).

"Width over Tires" dimensions are over the bulge and include growth.

# M Series Wheel Loaders Specifications

## 966M/966M XE/972M/972M XE Waste Handler Dimensions

All dimensions are approximate.



	966M/966M XE Waste Handler				972M/972M XE Waste Handler			
	Standard Lift		High Lift		Standard Lift		High Lift	
	mm	ft/in	mm	ft/in	mm	ft/in	mm	ft/in
<b>1</b> Height to Axle Centerline	836	2'9"	836	2'9"	835	2'9"	835	2'9"
<b>2</b> Height to Top of Hood	2855	9'4"	2855	9'4"	2854	9'4"	2854	9'4"
<b>3</b> Height to Top of Exhaust Pipe	3559	11'8"	3559	11'8"	3558	11'8"	3558	11'8"
<b>4</b> Height to Top of ROPS	3624	11'11"	3624	11'11"	3623	11'11"	3623	11'11"
<b>5</b> Height to Top of Product Link Antenna	3673	12'1"	3673	12'1"	3672	12'1"	3672	12'1"
<b>6</b> Height to Top of Warning Beacon	3896	12'9"	3896	12'9"	3895	12'9"	3895	12'9"
<b>7</b> Ground Clearance	471	1'7"	471	1'7"	470	1'7"	470	1'7"
<b>8</b> Center Line of Rear Axle to Edge of Counterweight	2180	7'2"	2500	8'2"	2500	8'2"	2500	8'2"
<b>9</b> Center Line of Rear Axle to Hitch	1775	5'10"	1775	5'10"	1775	5'10"	1775	5'10"
<b>10</b> Wheelbase	3550	11'8"	3550	11'8"	3550	11'8"	3550	11'8"
<b>11</b> Overall Length (without bucket)	7371	24'3"	8191	26'11"	9384	30'10"	9720	31'11"
<b>12</b> Shipping Length (with bucket level on ground)*†	9219	30'3"	9720	31'11"	9060	29'9"	9395	30'10"
<b>13</b> Hinge Pin Height at Carry Height	667	2'2"	815	2'8"	716	2'4"	814	2'8"
<b>14</b> Hinge Pin Height at Maximum Lift	4272	14'0"	4830	15'10"	4494	14'9"	4829	15'10"
<b>15</b> Lift Arm Clearance at Maximum Lift	3680	12'0"	4177	13'8"	3879	12'8"	4176	13'8"
<b>16</b> Dump Clearance at Maximum Lift and 45° Discharge*†	2669	8'9"	3227	10'7"	2892	9'5"	3227	10'7"
<b>17</b> Reach at Maximum Lift and 45° Discharge*†	1526	5'0"	1501	4'11"	1478	4'10"	1501	4'11"
<b>18</b> Dump Angle at Maximum Lift and Dump (on stops)*	46 degrees		45 degrees		44.1 degrees		44.1 degrees	
<b>19</b> Rack Back at Maximum Lift*	62 degrees		71 degrees		56 degrees		71 degrees	
<b>20</b> Rack Back at Carry Height*	50 degrees		49 degrees		50 degrees		49 degrees	
<b>21</b> Rack Back at Ground*	42 degrees		39 degrees		41 degrees		39 degrees	
<b>22</b> Clearance Circle (radius) to Counterweight	6872	22'7"	6872	22'7"	6872	22'7"	6872	22'7"
<b>23</b> Clearance Circle (radius) to Outside of Tires	6720	22'1"	6720	22'1"	6717	22'1"	6717	22'1"
<b>24</b> Clearance Circle (radius) to Inside of Tires	3894	12'10"	3894	12'10"	3898	12'10"	3898	12'10"
<b>25</b> Width over Tires – Maximum (unloaded)	2959	9'9"	2959	9'9"	2959	9'9"	2959	9'9"
Width over Tires – Maximum (loaded)	2968	9'9"	2968	9'9"	2968	9'9"	2968	9'9"
<b>26</b> Tread Width	2230	7'4"	2230	7'4"	2230	7'4"	2230	7'4"

\*With 7.4 m<sup>3</sup> (9.75 yd<sup>3</sup>) pin-on waste bucket with steel bolt-on cutting edges (see Operating Specifications for other Buckets) and rear guard counterweight.

†Dimensions are listed in Operating Specification charts.

All height and tire related dimensions are with Brawler 26.5-25 HPS Solidflex Smooth tires (see Tire Option charts for other tires).

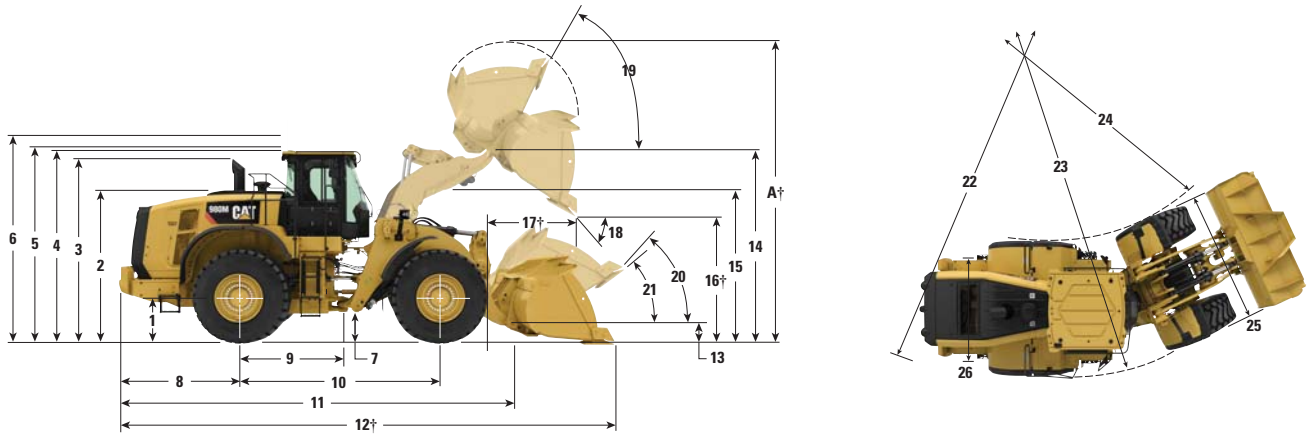
"Width over Tires" dimensions are over the bulge and include growth.



# M Series Wheel Loaders Specifications

## 980M Waste Handler Dimensions

All dimensions are approximate.



	980M Waste Handler			
	Standard Lift		High Lift	
	mm	ft/in	mm	ft/in
<b>1</b> Height to Axle Centerline	902	3'0"	902	3'0"
<b>2</b> Height to Top of Hood	3120	10'3"	3120	10'3"
<b>3</b> Height to Top of Exhaust Pipe	3756	12'4"	3756	12'4"
<b>4</b> Height to Top of ROPS	3823	12'7"	3823	12'7"
<b>5</b> Height to Top of Product Link Antenna	3901	12'10"	3901	12'10"
<b>6</b> Height to Top of Warning Beacon	4122	13'7"	4122	13'7"
<b>7</b> Ground Clearance	463	1'6"	463	1'6"
<b>8</b> Center Line of Rear Axle to Edge of Counterweight	2585	8'6"	2585	8'6"
<b>9</b> Center Line of Rear Axle to Hitch	1900	6'3"	1900	6'3"
<b>10</b> Wheelbase	3800	12'6"	3800	12'6"
<b>11</b> Overall Length (without bucket)	8080	26'7"	8280	27'2"
<b>12</b> Shipping Length (with bucket level on ground)*†	10 103	33'2"	10 303	33'10"
<b>13</b> Hinge Pin Height at Carry Height	631	2'1"	688	2'4"
<b>14</b> Hinge Pin Height at Maximum Lift	4549	14'11"	4770	15'7"
<b>15</b> Lift Arm Clearance at Maximum Lift	3805	12'5"	4020	13'2"
<b>16</b> Dump Clearance at Maximum Lift and 45° Discharge*†	2836	9'3"	3056	10'0"
<b>17</b> Reach at Maximum Lift and 45° Discharge*†	1724	5'7"	1726	5'7"
<b>18</b> Dump Angle at Maximum Lift and Dump (on stops)*	47 degrees		50 degrees	
<b>19</b> Rack Back at Maximum Lift*	61 degrees		55 degrees	
<b>20</b> Rack Back at Carry Height*	48 degrees		55 degrees	
<b>21</b> Rack Back at Ground*	40 degrees		55 degrees	
<b>22</b> Clearance Circle (diameter) to Counterweight	13 857	45'6"	13 857	45'6"
<b>23</b> Clearance Circle (diameter) to Outside of Tires	13 766	45'2"	13 766	45'2"
<b>24</b> Clearance Circle (diameter) to Inside of Tires	7239	23'10"	7239	23'10"
<b>25</b> Width over Tires – Maximum (unloaded)	3211	10'7"	3211	10'7"
Width over Tires – Maximum (loaded)	3234	10'8"	3234	10'8"
<b>26</b> Tread Width	2440	8'0"	2440	8'0"

\*With 10.7 m<sup>3</sup> (14 yd<sup>3</sup>) pin-on waste bucket with steel bolt-on cutting edges (see Operating Specifications for other Buckets) and rear guard counterweight.

†Dimensions are listed in Operating Specification charts.

All height and tire related dimensions are with Brawler 29.5-25 HPS Solidflex Smooth tires (see Tire Option charts for other tires).

"Width over Tires" dimensions are over the bulge and include growth.



# M Series Wheel Loaders Specifications

## 950M Waste Handler Tire Options

Tire Brand	Brawler HPS	Brawler HPS	Flexport™	Flexport	Michelin	Bridgestone	Yokohama	Titan
<b>Tire Size</b>	<b>23.5-25</b>	<b>23.5-25</b>	<b>65×13×25 (23.5×25)</b>	<b>65×13×25 (23.5×25)</b>	<b>23.5R25</b>	<b>23.5R25</b>	<b>23.5R25</b>	<b>23.5R25</b>
<b>Tread Type</b>	—	—	—	—	<b>L-3</b>	<b>L-3</b>	<b>L-3</b>	<b>L-3</b>
<b>Tread Pattern</b>	<b>Solidflex Smooth</b>	<b>Solidflex Traction</b>	<b>Smooth</b>	<b>OTR</b>	<b>XHA2</b>	<b>VJT</b>	<b>RB31</b>	<b>MXL</b>
Width over Tires – Maximum (unloaded)*	2753 mm 9'0"	2753 mm 9'0"	2808 mm 9'3"	2808 mm 9'3"	2814 mm 9'3"	2798 mm 9'2"	2581 mm 8'6"	2812 mm 9'3"
Width over Tires – Maximum (loaded)*	2760 mm 9'1"	2760 mm 9'1"	2821 mm 9'3"	2821 mm 9'3"	2822 mm 9'3"	2831 mm 9'3"	2634 mm 8'8"	2833 mm 9'4"
Change in Vertical Dimensions (average of front and rear)	0 mm 0"	0 mm 0"	-6 mm 0"	-6 mm 0"	-50 mm -2"	-56 mm -2"	-54 mm -2"	-35 mm -1"
Change in Horizontal Reach	0 mm 0"	0 mm 0"	-1 mm 0"	-1 mm 0"	9 mm 0"	15 mm 1"	15 mm 1"	5 mm 0"
Change in Clearance Circle (radius) to Outside of Tires	0 mm 0"	0 mm 0"	61.7 mm 2"	61.7 mm 2"	62.4 mm 2"	71.2 mm 3"	-125.5 mm -5"	73.5 mm 3"
Change in Clearance Circle (radius) to Inside of Tires	0 mm 0"	0 mm 0"	-62 mm -2"	-62 mm -2"	-62 mm -2"	-71 mm -3"	126 mm 5"	-74 mm -3"
Change in Operating Weight (without Ballast)	0 kg 0 lb	-145 kg -320 lb	936 kg 2,064 lb	620 kg 1,367 lb	-3376 kg -7,443 lb	-3208 kg -7,072 lb	-3105 kg -6,845 lb	-3365 kg -7,419 lb
Change in Static Tipping Load – Straight	0 kg 0 lb	-97 kg -214 lb	624 kg 1,376 lb	414 kg 913 lb	-2252 kg -4,965 lb	-2140 kg -4,718 lb	-2071 kg -4,566 lb	-2244 kg -4,947 lb
Change in Static Tipping Load – Articulated	0 kg 0 lb	-84 kg -185 lb	544 kg 1,199 lb	361 kg 796 lb	-1963 kg -4,328 lb	-1866 kg -4,114 lb	-1806 kg -3,982 lb	-1957 kg -4,314 lb

\*Width over tire bulge and includes tire growth.

# M Series Wheel Loaders Specifications

## 962M Waste Handler Tire Options

Tire Brand	Brawler HPS	Brawler HPS	Flexport	Flexport	Michelin	Bridgestone	Yokohama	Titan
Tire Size	23.5-25	23.5-25	65×13×25 (23.5×25)	65×13×25 (23.5×25)	23.5R25	23.5R25	23.5R25	23.5R25
Tread Type	—	—	—	—	L-3	L-3	L-3	L-3
Tread Pattern	Solidflex Smooth	Solidflex Traction	Smooth	OTR	XHA2	VJT	RB31	MXL
Width over Tires – Maximum (unloaded)*	2753 mm 9'0"	2753 mm 9'0"	2798 mm 9'2"	2808 mm 9'3"	2821 mm 9'3"	2809 mm 9'3"	2589 mm 8'6"	2815 mm 9'3"
Width over Tires – Maximum (loaded)*	2760 mm 9'1"	2760 mm 9'1"	2820 mm 9'3"	2821 mm 9'3"	2824 mm 9'3"	2832 mm 9'3"	2636 mm 8'8"	2834 mm 9'4"
Change in Vertical Dimensions (average of front and rear)	0 mm 0"	0 mm 0"	-6 mm 0"	-6 mm 0"	-54 mm -2"	-59 mm -2"	-56 mm -2"	-32 mm -1"
Change in Horizontal Reach	0 mm 0"	0 mm 0"	-1 mm 0"	-1 mm 0"	9 mm 0"	15 mm 1"	15 mm 1"	5 mm 0"
Change in Clearance Circle (radius) to Outside of Tires	0 mm 0"	0 mm 0"	60 mm 2"	62 mm 2"	64.2 mm 3"	72.9 mm 3"	-123.5 mm -5"	75 mm 3"
Change in Clearance Circle (radius) to Inside of Tires	0 mm 0"	0 mm 0"	-60 mm -2"	-62 mm -2"	-64 mm -3"	-73 mm -3"	123 mm 5"	-75 mm -3"
Change in Operating Weight (without Ballast)	0 kg 0 lb	-145 kg -320 lb	936 kg 2,064 lb	620 kg 1,367 lb	-3376 kg -7,443 lb	-3208 kg -7,072 lb	-3105 kg -6,845 lb	-3365 kg -7,419 lb
Change in Static Tipping Load – Straight	0 kg 0 lb	-92 kg -203 lb	592 kg 1,305 lb	392 kg 864 lb	-2018 kg -4,449 lb	-2031 kg -4,478 lb	-1965 kg -4,332 lb	-2130 kg -4,696 lb
Change in Static Tipping Load – Articulated	0 kg 0 lb	-80 kg -176 lb	516 kg 1,138 lb	342 kg 754 lb	-1759 kg -3,878 lb	-1770 kg -3,902 lb	-1713 kg -3,777 lb	-1856 kg -4,092 lb

\*Width over tire bulge and includes tire growth.

# M Series Wheel Loaders Specifications

## 966M/966M XE Waste Handler Tire Options

Tire Brand	Brawler HPS	Brawler HPS	Flexport	Flexport	Michelin	Bridgestone	Yokohama	Titan
<b>Tire Size</b>	<b>26.5-25</b>	<b>26.5-25</b>	<b>70×14×28 (26.5×25)</b>	<b>70×14×28 (26.5×25)</b>	<b>26.5R25</b>	<b>26.5R25</b>	<b>26.5R25</b>	<b>26.5R25</b>
<b>Tread Type</b>	—	—	—	—	<b>L-3</b>	<b>L-3</b>	<b>L-3</b>	<b>L-3</b>
<b>Tread Pattern</b>	<b>Solidflex Smooth</b>	<b>Solidflex Traction</b>	<b>Smooth</b>	<b>OTR</b>	<b>XHA2</b>	<b>VJT</b>	<b>RB31</b>	<b>STL3</b>
Width over Tires – Maximum (unloaded)*	2959 mm 9'8"	2959 mm 9'8"	2896 mm 9'6"	2955 mm 9'8"	2991 mm 9'10"	2982 mm 9'9"	2950 mm 9'8"	2954 mm 9'8"
Width over Tires – Maximum (loaded)*	2968 mm 9'9"	2968 mm 9'9"	2915 mm 9'7"	2972 mm 9'9"	3009 mm 9'10"	3016 mm 9'11"	2982 mm 9'9"	2989 mm 9'10"
Change in Vertical Dimensions (average of front and rear)	0 mm 0"	0 mm 0"	15 mm 1"	22 mm 1"	-37 mm -1"	-22 mm -1"	-22 mm -1"	-21 mm -1"
Change in Horizontal Reach	0 mm 0"	0 mm 0"	-21 mm -1"	-32 mm -1"	-9 mm 0"	-11 mm 0"	-8 mm 0"	-9 mm 0"
Change in Clearance Circle (radius) to Outside of Tires	0 mm 0"	0 mm 0"	-53 mm -2"	4 mm 0"	41 mm 2"	48 mm 2"	14 mm 1"	22 mm 1"
Change in Clearance Circle (radius) to Inside of Tires	0 mm 0"	0 mm 0"	53 mm 2"	-4 mm 0"	-41 mm -2"	-48 mm -2"	-14 mm -1"	-22 mm -1"
Change in Operating Weight (without Ballast)	0 kg 0 lb	-222 kg -489 lb	-700 kg -1,542 lb	-1177 kg -2,594 lb	-4464 kg -9,839 lb	-4300 kg -9,477 lb	-4188 kg -9,230 lb	-4344 kg -9,574 lb
Change in Static Tipping Load – Straight	0 kg 0 lb	-160 kg -353 lb	-505 kg -1,114 lb	-850 kg -1,874 lb	-3225 kg -7,107 lb	-3106 kg -6,846 lb	-3025 kg -6,668 lb	-3138 kg -6,916 lb
Change in Static Tipping Load – Articulated	0 kg 0 lb	-143 kg -315 lb	-451 kg -993 lb	-758 kg -1,671 lb	-2876 kg -6,338 lb	-2770 kg -6,105 lb	-2698 kg -5,946 lb	-2798 kg -6,168 lb

\*Width over tire bulge and includes tire growth.

# M Series Wheel Loaders Specifications

## 972M/972M XE Waste Handler Tire Options

Tire Brand	Brawler HPS	Brawler HPS	Flexport	Flexport	Michelin	Bridgestone	Yokohama	Titan
<b>Tire Size</b>	<b>26.5-25</b>	<b>26.5-25</b>	<b>70×14×28 (26.5×25)</b>	<b>70×14×28 (26.5×25)</b>	<b>26.5R25</b>	<b>26.5R25</b>	<b>26.5R25</b>	<b>26.5R25</b>
<b>Tread Type</b>	—	—	—	—	<b>L-3</b>	<b>L-3</b>	<b>L-3</b>	<b>L-3</b>
<b>Tread Pattern</b>	<b>Solidflex Smooth</b>	<b>Solidflex Traction</b>	<b>Smooth</b>	<b>OTR</b>	<b>XHA2</b>	<b>VJT</b>	<b>RB31</b>	<b>STL3</b>
Width over Tires – Maximum (unloaded)*	2959 mm 9'8"	2959 mm 9'8"	2900 mm 9'6"	2956 mm 9'8"	2990 mm 9'10"	2982 mm 9'9"	2955 mm 9'8"	2968 mm 9'9"
Width over Tires – Maximum (loaded)*	2968 mm 9'9"	2968 mm 9'9"	2915 mm 9'7"	2972 mm 9'9"	3012 mm 9'11"	3016 mm 9'11"	2981 mm 9'9"	3009 mm 9'10"
Change in Vertical Dimensions (average of front and rear)	0 mm 0"	0 mm 0"	14 mm 1"	21 mm 1"	-36 mm -1"	-22 mm -1"	-24 mm -1"	-22 mm -1"
Change in Horizontal Reach	0 mm 0"	0 mm 0"	-21 mm -1"	-32 mm -1"	-9 mm 0"	-11 mm 0"	-8 mm 0"	-9 mm 0"
Change in Clearance Circle (radius) to Outside of Tires	0 mm 0"	0 mm 0"	-52 mm -2"	5 mm 0"	45 mm 2"	48 mm 2"	14 mm 1"	42 mm 2"
Change in Clearance Circle (radius) to Inside of Tires	0 mm 0"	0 mm 0"	52 mm 2"	-5 mm 0"	-45 mm -2"	-48 mm -2"	-14 mm -1"	-42 mm -2"
Change in Operating Weight (without Ballast)	0 kg 0 lb	-222 kg -489 lb	-700 kg -1,542 lb	-1177 kg -2,594 lb	-4464 kg -9,839 lb	-4300 kg -9,477 lb	-4188 kg -9,230 lb	-4344 kg -9,574 lb
Change in Static Tipping Load – Straight	0 kg 0 lb	-149 kg -329 lb	-471 kg -1,038 lb	-792 kg -1,745 lb	-3004 kg -6,620 lb	-2893 kg -6,377 lb	-2818 kg -6,211 lb	-2923 kg -6,443 lb
Change in Static Tipping Load – Articulated	0 kg 0 lb	-133 kg -293 lb	-419 kg -924 lb	-705 kg -1,554 lb	-2674 kg -5,893 lb	-2576 kg -5,677 lb	-2509 kg -5,529 lb	-2602 kg -5,735 lb

\*Width over tire bulge and includes tire growth.

# M Series Wheel Loaders Specifications

## 980M Waste Handler Tire Options

Tire Brand	Brawler HPS	Brawler HPS	Michelin	Michelin	Bridgestone	Bridgestone	Yokohama
Tire Size	29.5-25	29.5-25	29.5R25	29.5R25	29.5R25	29.5R25	29.5R25
Tread Type	—	—	L-3	L-4	L-3	L-5	L-3
Tread Pattern	Solidflex Smooth	Solidflex Traction	XHA2	XTXL	VJT	VSDL	RB31
Width over Tires – Maximum (unloaded)*	3211 mm 10'6"	3211 mm 10'6"	3273 mm 10'9"	3230 mm 10'7"	3280 mm 10'9"	3251 mm 10'8"	3268 mm 10'9"
Width over Tires – Maximum (loaded)*	3234 mm 10'7"	3234 mm 10'7"	3292 mm 10'10"	3270 mm 10'9"	3292 mm 10'10"	3273 mm 10'9"	3295 mm 10'10"
Change in Vertical Dimensions (average of front and rear)	0 mm 0"	0 mm 0"	-44 mm -2"	-33 mm -1"	-31 mm -1"	11 mm 1"	-46 mm -2"
Change in Horizontal Reach	0 mm 0"	0 mm 0"	-8 mm 0"	12 mm 1"	-10 mm 0"	-40 mm -2"	-3 mm 0"
Change in Clearance Circle (radius) to Outside of Tires	0 mm 0"	0 mm 0"	59 mm 2"	36 mm 1"	59 mm 2"	40 mm 2"	61 mm 2"
Change in Clearance Circle (radius) to Inside of Tires	0 mm 0"	0 mm 0"	-59 mm -2"	-36 mm -1"	-59 mm -2"	-40 mm -2"	-61 mm -2"
Change in Operating Weight (without Ballast)	0 kg 0 lb	-288 kg -635 lb	-5496 kg -12,113 lb	-5052 kg -11,135 lb	-5404 kg -11,910 lb	-4088 kg -9,010 lb	-5244 kg -11,558 lb
Change in Static Tipping Load – Straight	0 kg 0 lb	-217 kg -479 lb	-4149 kg -9,145 lb	-3814 kg -8,406 lb	-4080 kg -8,992 lb	-3086 kg -6,802 lb	-3959 kg -8,726 lb
Change in Static Tipping Load – Articulated	0 kg 0 lb	-189 kg -417 lb	-3611 kg -7,958 lb	-3319 kg -7,315 lb	-3550 kg -7,825 lb	-2686 kg -5,920 lb	-3445 kg -7,593 lb

\*Width over tire bulge and includes tire growth.

• Do not exceed machine speed of 20 km/h (12 mph) for machines equipped with tires heavier than Tread Type L-5.

# M Series Wheel Loaders Specifications

## 950M Waste Handler Operating Specifications with Buckets

Bucket Type		Pin-On Load & Carry	Pin-On Dozing	Pin-On Tamp & Clamp	Pin-On Grapple	Fusion/Dozing	Fusion/Grapple	
Edge Type		Steel Bolt-On Cutting Edges	Steel Bolt-On Cutting Edges	Steel Bolt-On Cutting Edges	Steel Bolt-On Cutting Edges	Steel Bolt-On Cutting Edges	Steel Bolt-On Cutting Edges	High Lift Delta*
Capacity – Rated	m <sup>3</sup>	6.10	5.20	4.40	4.60	5.20	4.60	—
	yd <sup>3</sup>	8.00	6.75	5.75	6.00	6.75	6.00	—
Capacity – Rated at 110% Fill Factor	m <sup>3</sup>	6.70	5.70	4.80	5.10	5.70	5.10	—
	yd <sup>3</sup>	8.75	7.50	6.25	6.75	7.50	6.75	—
Width	mm	3059	3059	3059	3059	3032	3059	—
	ft/in	10'0"	10'0"	10'0"	10'0"	9'11"	10'0"	—
16† Dump Clearance at Maximum Lift and 45° Discharge	mm	2518	2854	2301	2572	2784	2563	506
	ft/in	8'3"	9'4"	7'6"	8'5"	9'1"	8'4"	1'7"
17† Reach at Maximum Lift and 45° Discharge	mm	1685	1349	1891	1729	1419	1738	36
	ft/in	5'6"	4'5"	6'2"	5'8"	4'7"	5'8"	1"
Reach at Level Lift Arm and Bucket Level	mm	3174	2699	3474	3157	2798	3170	375
	ft/in	10'4"	8'10"	11'4"	10'4"	9'2"	10'4"	1'2"
12† Overall Length	mm	8658	8183	8965	8641	8282	8654	626
	ft/in	28'5"	26'11"	29'5"	28'5"	27'3"	28'5"	2'0"
A† Overall Height with Bucket at Maximum Lift	mm	5983	6162	5322	6007	6148	6071	506
	ft/in	19'8"	20'3"	17'6"	19'9"	20'3"	19'11"	1'7"
Loader Clearance Circle Radius with Bucket at Carry Position	mm	6949	6800	7052	6944	6814	6945	211
	ft/in	22'10"	22'4"	23'2"	22'10"	22'5"	22'10"	8"
Static Tipping Load, Straight (Rigid Tire)	kg	14 099	16 025	12 302	13 575	15 006	13 183	-2319
	lb	31,074	35,320	27,114	29,920	33,073	29,055	-5,111
Static Tipping Load, Articulated (Rigid Tire)	kg	12 218	13 967	10 523	11 728	13 001	11 341	-2077
	lb	26,930	30,783	23,193	25,849	28,654	24,995	-4,577
Breakout Force	kN	131	190	107	123	162	122	-6
	lbf	29,506	42,701	24,075	27,656	36,407	27,426	-1,348
Operating Weight	kg	23 019	22 688	24 086	23 392	23 263	23 866	103
	lb	50,732	50,003	53,084	51,554	51,272	52,601	227

†Illustration shown with Dimension charts.

\*Maximum values.

Static tipping loads and operating weights shown are based on machine configuration with Brawler HPS Solidflex Smooth tires, full fluids, operator, standard lift linkage, standard Waste Arrangement guarding, front window guard, rear guard counterweight, light guards, auto diff lock axles (front/rear) and two valve hydraulics.

# M Series Wheel Loaders Specifications

## 962M Waste Handler Operating Specifications with Buckets

Bucket Type		Pin-On Load & Carry	Pin-On Dozing	Pin-On Tamp & Clamp	Pin-On Grapple	Fusion/Dozing	Fusion/Grapple	
Edge Type		Steel Bolt-On Cutting Edges	Steel Bolt-On Cutting Edges	Steel Bolt-On Cutting Edges	Steel Bolt-On Cutting Edges	Steel Bolt-On Cutting Edges	Steel Bolt-On Cutting Edges	High Lift Delta*
Capacity – Rated	m <sup>3</sup>	6.10	5.20	4.40	4.60	5.20	4.60	—
	yd <sup>3</sup>	8.00	6.75	5.75	6.00	6.75	6.00	—
Capacity – Rated at 110% Fill Factor	m <sup>3</sup>	6.70	5.70	4.80	5.10	5.70	5.10	—
	yd <sup>3</sup>	8.75	7.50	6.25	6.75	7.50	6.75	—
Width	mm	3059	3059	3059	3059	3032	3059	—
	ft/in	10'0"	10'0"	10'0"	10'0"	9'11"	10'0"	—
<b>16</b> † Dump Clearance at Maximum Lift and 45° Discharge	mm	2735	3071	2517	2788	3001	2780	289
	ft/in	8'11"	10'0"	8'3"	9'1"	9'10"	9'1"	11"
<b>17</b> † Reach at Maximum Lift and 45° Discharge	mm	1619	1283	1825	1662	1353	1672	102
	ft/in	5'3"	4'2"	5'11"	5'5"	4'5"	5'5"	4"
Reach at Level Lift Arm and Bucket Level	mm	3272	2797	3572	3255	2896	3268	277
	ft/in	10'8"	9'2"	11'8"	10'8"	9'6"	10'8"	10"
<b>12</b> † Overall Length	mm	8781	8306	9087	8764	8405	8777	503
	ft/in	28'10"	27'3"	29'10"	28'10"	27'7"	28'10"	1'7"
<b>A</b> † Overall Height with Bucket at Maximum Lift	mm	6200	6379	5539	6224	6365	6287	289
	ft/in	20'5"	21'0"	18'3"	20'6"	20'11"	20'8"	11"
Loader Clearance Circle Radius with Bucket at Carry Position	mm	7000	6850	7104	6994	6864	6996	168
	ft/in	23'0"	22'6"	23'4"	23'0"	22'7"	23'0"	6"
Static Tipping Load, Straight (Rigid Tire)	kg	13 195	14 971	11 503	12 709	13 987	12 318	1545
	lb	29,082	32,997	25,353	28,011	30,828	27,149	3,405
Static Tipping Load, Articulated (Rigid Tire)	kg	11 415	13 031	9811	10 956	12 096	10 570	1388
	lb	25,159	28,720	21,625	24,147	26,661	23,296	3,059
Breakout Force	kN	142	205	116	134	175	132	0
	lbf	32,074	46,265	26,273	30,128	39,509	29,880	0
Operating Weight	kg	23 099	22 768	24 166	23 472	23 343	23 946	24
	lb	50,909	50,179	53,260	51,731	51,448	52,777	52

†Illustration shown with Dimension charts.

\*Maximum values.

Static tipping loads and operating weights shown are based on machine configuration with Brawler HPS Solidflex Smooth tires, full fluids, operator, standard lift linkage, standard Waste Arrangement guarding, front window guard, rear guard counterweight, light guards, auto diff lock axles (front/rear) and two valve hydraulics.



# M Series Wheel Loaders Specifications

## 966M/966M XE Waste Handler Operating Specifications with Buckets

Bucket Type		Pin-On Load & Carry	Pin-On Dozing	Pin-On Tamp & Clamp	High Lift Delta*
Edge Type		Steel Bolt-On Cutting Edges	Steel Bolt-On Cutting Edges	Steel Bolt-On Cutting Edges	
Capacity – Rated	m <sup>3</sup>	7.40	6.50	5.00	—
	yd <sup>3</sup>	9.75	8.50	6.50	—
Capacity – Rated at 110% Fill Factor	m <sup>3</sup>	8.10	7.20	5.50	—
	yd <sup>3</sup>	10.50	9.50	7.25	—
Width	mm	3357	3357	3357	—
	ft/in	11'0"	11'0"	11'0"	—
<b>16</b> † Dump Clearance at Maximum Lift and 45° Discharge	mm	2669	2950	2456	558
	ft/in	8'9"	9'8"	8'0"	1'9"
<b>17</b> † Reach at Maximum Lift and 45° Discharge	mm	1526	1245	1740	24
	ft/in	5'0"	4'1"	5'8"	11"
Reach at Level Lift Arm and Bucket Level	mm	3199	2802	3501	404
	ft/in	10'5"	9'2"	11'5"	1'3"
<b>12</b> † Overall Length	mm	9133	8736	9435	587
	ft/in	30'0"	28'8"	31'0"	1'11"
<b>A</b> † Overall Height with Bucket at Maximum Lift	mm	6376	6735	5515	558
	ft/in	20'11"	22'2"	18'2"	1'9"
Loader Clearance Circle Radius with Bucket at Carry Position	mm	7686	7584	7768	264
	ft/in	25'3"	24'11"	25'6"	10"
Static Tipping Load, Straight (Rigid Tire)	kg	20 063	22 057	17 440	-2931
	lb	44,219	48,615	38,437	-6,459
Static Tipping Load, Articulated (Rigid Tire)	kg	17 764	19 581	15 318	-2676
	lb	39,153	43,156	33,762	-5,897
Breakout Force	kN	136	182	111	-10
	lbf	30,776	41,070	25,083	-2,246
Operating Weight	kg	28 856	28 649	29 879	234
	lb	63,598	63,142	65,853	515

†Illustration shown with Dimension charts.

\*Maximum values.

Static tipping loads and operating weights shown are based on machine configuration with Brawler HPS Solidflex Smooth tires, full fluids, operator, standard lift linkage, standard Waste Arrangement guarding, front window guard, rear guard counterweight, light guards, auto diff lock axles (front/rear) and two valve hydraulics.

# M Series Wheel Loaders Specifications

## 972M/972M XE Waste Handler Operating Specifications with Buckets

Bucket Type		Pin-On Load & Carry	Pin-On Dozing	Pin-On Tamp & Clamp	
Edge Type		Steel Bolt-On Cutting Edges	Steel Bolt-On Cutting Edges	Steel Bolt-On Cutting Edges	High Lift Delta*
Capacity – Rated	m <sup>3</sup>	7.40	6.50	5.00	—
	yd <sup>3</sup>	9.75	8.50	6.50	—
Capacity – Rated at 110% Fill Factor	m <sup>3</sup>	8.10	7.20	5.50	—
	yd <sup>3</sup>	10.50	9.50	7.25	—
Width	mm	3357	3357	3357	—
	ft/in	11'0"	11'0"	11'0"	—
<b>16</b> † Dump Clearance at Maximum Lift and 45° Discharge	mm	2892	3172	2678	336
	ft/in	9'5"	10'4"	8'9"	1'1"
<b>17</b> † Reach at Maximum Lift and 45° Discharge	mm	1478	1198	1692	23
	ft/in	4'10"	3'11"	5'6"	0"
Reach at Level Lift Arm and Bucket Level	mm	3329	2932	3631	274
	ft/in	10'11"	9'7"	11'10"	10"
<b>12</b> † Overall Length	mm	9299	8902	9601	421
	ft/in	30'7"	29'3"	31'6"	1'4"
<b>A</b> † Overall Height with Bucket at Maximum Lift	mm	6598	6957	5738	336
	ft/in	21'8"	22'10"	18'10"	1'1"
Loader Clearance Circle Radius with Bucket at Carry Position	mm	7767	7659	7853	179
	ft/in	25'6"	25'2"	25'10"	7"
Static Tipping Load, Straight (Rigid Tire)	kg	18 342	20 092	15 994	1366
	lb	40,427	44,283	35,251	3,010
Static Tipping Load, Articulated (Rigid Tire)	kg	16 208	17 804	14 009	1258
	lb	35,723	39,240	30,875	2,772
Breakout Force	kN	165	219	135	4
	lbf	37,205	49,418	30,552	898
Operating Weight	kg	29 175	28 968	30 198	85
	lb	64,302	63,846	66,557	187

†Illustration shown with Dimension charts.

\*Maximum values.

Static tipping loads and operating weights shown are based on machine configuration with Brawler HPS Solidflex Smooth tires, full fluids, operator, standard lift linkage, standard Waste Arrangement guarding, front window guard, rear guard counterweight, light guards, auto diff lock axles (front/rear) and two valve hydraulics.

# M Series Wheel Loaders Specifications

## 980M Waste Handler Operating Specifications with Buckets

Bucket Type		Pin-On Load & Carry	Pin-On Dozing	High Lift Delta*
Edge Type		Steel Bolt-On Cutting Edges	Steel Bolt-On Cutting Edges	
Capacity – Rated	m <sup>3</sup>	10.70	9.90	—
	yd <sup>3</sup>	14.00	13.00	—
Capacity – Rated at 110% Fill Factor	m <sup>3</sup>	11.80	10.90	—
	yd <sup>3</sup>	15.50	14.25	—
Width	mm	3882	3882	—
	ft/in	12'8"	12'8"	—
<b>16</b> † Dump Clearance at Maximum Lift and 45° Discharge	mm	2836	3069	220
	ft/in	9'3"	10'0"	8"
<b>17</b> † Reach at Maximum Lift and 45° Discharge	mm	1723	1490	3
	ft/in	5'7"	4'10"	0"
Reach at Level Lift Arm and Bucket Level	mm	3483	3153	160
	ft/in	11'5"	10'4"	6"
<b>12</b> † Overall Length	mm	9988	9658	316
	ft/in	32'10"	31'9"	1'0"
<b>A</b> † Overall Height with Bucket at Maximum Lift	mm	6948	7170	221
	ft/in	22'10"	23'7"	8"
Loader Clearance Circle Radius with Bucket at Carry Position	mm	7957	7865	504
	ft/in	26'2"	25'10"	1'7"
Static Tipping Load, Straight (Rigid Tire)	kg	26 360	29 075	2463
	lb	58,099	64,082	5,428
Static Tipping Load, Articulated (Rigid Tire)	kg	22 688	25 094	1723
	lb	50,005	55,307	3,797
Breakout Force	kN	172	213	3
	lbf	38,813	47,916	674
Operating Weight	kg	36 833	36 605	115
	lb	81,180	80,678	253

†Illustration shown with Dimension charts.

\*Maximum values.

Static tipping loads and operating weights shown are based on machine configuration with Brawler HPS Solidflex Smooth tires, full fluids, operator, standard lift linkage, standard Waste Arrangement guarding, front window guard, rear guard counterweight, light guards, auto diff lock axles (front/rear) and two valve hydraulics.

# Medium Wheel Loaders Standard and Optional Equipment

## Standard and Optional Equipment

Standard and optional equipment may vary. Consult your Cat dealer for details.

	Standard	Optional		Standard	Optional
<b>OPERATOR ENVIRONMENT</b>			<b>OPERATOR ENVIRONMENT (continued)</b>		
Cab, pressurized and sound suppressed (ROPS/FOPS)	✓		Cab air filter	✓	
Viscous mounts	✓		Filter, carbon fresh air		✓
Multi-function 18 cm (7 in) color touch-screen display for rear vision camera, clock and machine parameters	✓		Ergonomic cab access ladders and handrails	✓	
EH controls, SAL (single axis lever) lift and tilt function	✓		Horn, electric	✓	
EH controls, SAL 3 <sup>rd</sup> function – additional roller switch for 4 <sup>th</sup> function		✓	Light, two dome (cab)	✓	
EH controls, joystick lift and tilt – additional integrated roller switches for 3 <sup>rd</sup> and 4 <sup>th</sup> functions		✓	Mirrors, rearview external with integrated spot mirrors	✓	
Steering, EH joystick, speed sensing with force feedback (966M-980M)	✓		Mirrors, heated rearview external with integrated spot mirrors		✓
Steering, EH wheel with directional FNR shifter and gear selector – additional FNR with implement controls (966M-980M)		✓	Post mounted membrane 16 switch keypad	✓	
Steering, steering wheel (950M, 962M)	✓		2 receptacles, 12V	✓	
Steering, EH joystick, speed sensing with force feedback (950M, 962M)		✓	Seat, Cat Comfort (cloth) air suspension	✓	
Steering, secondary		✓	Seat, heated air suspension		✓
Radio ready (entertainment) includes antenna, speakers and converter (12V, 10-amp)	✓		Seat belt, 51 mm (2 in) retractable, with indicator	✓	
Radio, AM/FM/USB/MP3 Bluetooth®		✓	Seat belt, 76 mm (3 in) retractable, with indicator		✓
Radio, AM/FM/CD/USB/MP3 Bluetooth		✓	Sun visor, front	✓	
Radio, AM/FM/CD/USB/MP3 Bluetooth with Satellite Sirius and XM		✓	Sun visor, rear		✓
Radio, CB ready		✓	Wet-arm wipers/washers front and rear, intermittent front wiper	✓	
Air conditioner, heater, and defroster (auto temp and fan)	✓		Window, sliding (left and right sides)	✓	
EH parking brake	✓		Windows, rubber mounted		✓
Beverage holders (2) with storage compartment for cell phone/MP3 player	✓		Windows, with front guard		✓
Bucket/work tool function lockout	✓		Windows, with heavy duty front guard		✓
Coat hook (2)	✓		Windows, with full guards front, rear and sides		✓
			Cab tie-off	✓	
			Door, remote opening system		✓
			Cover, HVAC metallic		✓
			Precleaner, HVAC		✓
			Precleaner, HVAC (RESPA)		✓
			Roof, metallic		✓

(continued on next page)

# Medium Wheel Loaders Standard and Optional Equipment

## Standard and Optional Equipment *(continued)*

Standard and optional equipment may vary. Consult your Cat dealer for details.

	Standard	Optional		Standard	Optional
<b>COMPUTERIZED MONITORING SYSTEM</b>			<b>ELECTRICAL AND LIGHTING</b>		
With following gauges:	✓		Batteries (2), maintenance free 1,400 CCA	✓	
– Speedometer/tachometer			Ignition key; start/stop switch	✓	
– Digital gear range indicator			Starter, electric, heavy duty	✓	
– Diesel Exhaust Fluid (DEF) level (Tier 4 Final models)			Starting and charging system (24V)	✓	
– Temperature: engine coolant, hydraulic oil, transmission oil			Lighting system:	✓	
– Fuel level			– Four halogen work lights (cab mounted)		
With following warning indicators:	✓		– Two halogen roading lights (with signals)		
– Regeneration			– Two halogen rear vision lights (hood mounted)		
– Temperature: axle oil, engine intake manifold			Four additional auxiliary halogen cab mounted work lights OR two additional auxiliary front HI LED and two additional auxiliary rear LED cab mounted work lights with 2 LED work lights in the radiator grill and LED front turn signals also includes replacement of the standard four halogen cab mounted work lights with four LED work lights (the standard offering and only roading light available is the halogen roading light)		✓
– Pressure: engine oil, fuel pressure hi/low, primary steering oil, service brake oil			Warning amber strobe beacon		✓
– Battery voltage hi/low			Reversing strobes		✓
– Engine air filter restriction			Alarm, back-up	✓	
– Hydraulic oil filter restriction			Alternator, 145-amp brushed	✓	
– Hydraulic oil low			Main disconnect switch	✓	
– Parking brake			Receptacle start (cables not included)	✓	
– DEF low level (Tier 4 Final models)			External seat belt indicator light		✓
– Transmission filter bypass					

*(continued on next page)*

# Medium Wheel Loaders Standard and Optional Equipment

## Standard and Optional Equipment *(continued)*

Standard and optional equipment may vary. Consult your Cat dealer for details.

	Standard	Optional		Standard	Optional
<b>STARTERS, BATTERIES, AND ALTERNATORS</b>			<b>POWER TRAIN <i>(continued)</i></b>		
Cold start – 120V		✓	Axles, manually actuated differential lock front axle, open differential rear axle ( <i>950M-972M</i> )	✓	
Cold start – 240V		✓	Axles, open differential front/rear ( <i>980M</i> )	✓	
<b>CAT CONNECT TECHNOLOGIES</b>			Axles, ecology drains	✓	
Link technologies: Product Link	✓		Axles:		✓
Detect technologies: rear vision camera	✓		– Automatic front/rear differential locks ( <i>950M-972M</i> )		
Link technologies: VIMS™		✓	– Limited slip differentials front/rear ( <i>980M</i> )		
Payload technologies:		✓	– Axle oil cooler		
– Advanced Productivity subscription			– Extreme temperature seals		
– Cat Production Measurement			– Seal guards ( <i>950M-972M</i> )		
– Printer			Brakes, full hydraulic enclosed wet-disc with Integrated Braking System (IBS)	✓	
Detect technologies:		✓	Brake wear indicators	✓	
– Cat Rear Object Detection			Parking brake, disc and caliper	✓	
Machine Security System		✓	Fan, radiator, on demand	✓	
<b>POWER TRAIN</b>			Fan, VPF (variable pitch fan), automatic and manual control		✓
Engine, ACERT – meets Tier 4 Final emission standards	✓		Radiator, high debris with wider fin spacing		✓
Cat Clean Emissions Module (CEM) with Diesel Particulate Filter (DPF) and Diesel Exhaust Fluid (DEF) tank and pump (Tier 4 Final models)	✓		<b>LINKAGE</b>		
Fuel priming pump (electric)	✓		Linkage, Z-bar	✓	
Fuel/water separator	✓		Kickout, lift and tilt, automatic	✓	
Precleaner, engine air intake	✓		High lift		✓
Economy Mode (selectable)	✓		Quick coupler ready		✓
Transmission, automatic	✓				
Transmission, heavy duty ( <i>980M</i> )		✓			
Torque converter, locking clutch with free wheel stator	✓				
Switch, transmission neutralizer lockout	✓				

*(continued on next page)*

# Medium Wheel Loaders Standard and Optional Equipment

## Standard and Optional Equipment *(continued)*

Standard and optional equipment may vary. Consult your Cat dealer for details.

	Standard	Optional		Standard	Optional
<b>HYDRAULICS</b>			<b>OTHER EQUIPMENT</b>		
Hydraulic system, load sensing	✓		Hood, non-metallic power tilting	✓	
Steering, load sensing	✓		Service centers (electrical and hydraulic)	✓	
Ride control, 2V	✓		Platform, window washing	✓	
Remote diagnostic pressure taps	✓		Auto idle shutdown	✓	
Hoses, Cat XT™	✓		Fenders, front with mud-flap/rear with extension	✓	
Oil sampling valves	✓		Fenders, roading		✓
Hydraulic oil cooler	✓		Ecology drains for engine, transmission, and hydraulics	✓	
3 <sup>rd</sup> function with Ride Control (950M-980M):		✓	Ether aid ready	✓	
– Standard linkage			Grill, airborne debris	✓	
– High lift linkage			Filters: fuel, engine air, engine oil, hydraulic oil, transmission	✓	
4 <sup>th</sup> function with Ride Control (950M-972M):		✓	Fuel cooler	✓	
– Standard linkage			Grease zerks	✓	
– High lift linkage			Hitch, drawbar with pin	✓	
<b>FLUIDS</b>			Precleaner, rain cap	✓	
Premixed extended life coolant with freeze protection to –34° C (–29° F)	✓		Precleaner, turbine		✓
Premixed extended life coolant with freeze protection to –50° C (–58° F)		✓	Precleaner, trash		✓
			Sight gauges: engine coolant, hydraulic oil, and transmission oil level	✓	
			Toolbox	✓	
			Vandalism protection caplocks	✓	
			Cat Autolube System		✓
			Fuel tank, fast fill (980M)		✓
			Guard, power train		✓
			Oil change, high speed engine		✓
			Wheel chocks		✓

For more complete information on Cat products, dealer services, and industry solutions, visit us on the web at [www.cat.com](http://www.cat.com)

AEXQ2363 (12-2018)  
(N Am)

© 2018 Caterpillar  
All rights reserved

Materials and specifications are subject to change without notice. Featured machines in photos may include additional equipment. See your Cat dealer for available options.

CAT, CATERPILLAR, LET'S DO THE WORK, their respective logos, "Caterpillar Yellow", the "Power Edge" trade dress as well as corporate and product identity used herein, are trademarks of Caterpillar and may not be used without permission.

