



330 GC

Hydraulic Excavator

Technical Specifications

Engine

Engine Model	Cat® C7.1	
Net Power – ISO 9249	151 kW	202 hp
Net Power – SAE J1349	151 kW	202 hp
Gross Power – ISO 14396/SAE J1995	152 kW	204 hp
Bore	105 mm	4 in
Stroke	135 mm	5 in
Displacement	7.01 L	428 in ³

- Meets U.S. EPA Tier 4 Final, EU Stage IV, and Japan 2014 emission standards.
- Recommended for use up to 4500 m (14,760 ft) altitude with engine power derate above 3000 m (9,840 ft).
- Net power advertised is the power available at the flywheel when the engine is equipped with fan, air cleaner, muffler, and alternator.
- Rating at 1,800 rpm.

Engine rpm

Operation	1,750 rpm
Travel	1,750 rpm

Swing Mechanism

Swing Speed	11.50 rpm
Swing Torque	82 kN·m 60,628 lbf·ft

Weights

Operating Weight	29 700 kg	65,600 lb
------------------	-----------	-----------

- Long undercarriage, Reach boom, R3.2 m (10'6") stick, HD 1.54 m³ (2.01 yd³) bucket, 600 mm (24") triple grouser shoes and 6700 kg (14,770 lb) counterweight.

Track

Standard Track Shoes Width	600 mm	24 in
Number of Shoes (each side)	50	
Number of Track Rollers (each side)	9	
Number of Carrier Rollers (each side)	2	

Drive

Maximum Gradeability	35°/70%	
Maximum Travel Speed	5.3 km/h	3.3 mph
Maximum Drawbar Pull	248 kN	55,753 lbf

Hydraulic System

Main System – Maximum Flow – Implement	560 L/min (280 × 2 pumps)	148 gal/min (74 × 2 pumps)
Maximum Pressure – Equipment	35 000 kPa	5,075 psi
Maximum Pressure – Travel	35 000 kPa	5,075 psi
Maximum Pressure – Swing	28 400 kPa	4,120 psi
Boom Cylinder – Bore	140 mm	6 in
Boom Cylinder – Stroke	1407 mm	55 in
Stick Cylinder – Bore	150 mm	6 in
Stick Cylinder – Stroke	1646 mm	65 in
Bucket Cylinder – Bore	135 mm	5 in
Bucket Cylinder – Stroke	1156 mm	46 in

330 GC Hydraulic Excavator Specifications

Service Refill Capacities

Fuel Tank Capacity	474 L	125.2 gal
Cooling System	25 L	6.6 gal
Engine Oil	25 L	6.6 gal
Swing Drive	10 L	2.6 gal
Final Drive (each)	5.5 L	1.5 gal
Hydraulic System (including tank)	310 L	81.9 gal
Hydraulic Tank	147 L	38.8 gal
DEF Tank	41 L	10.8 gal

Standards

Brakes	ISO 10265:2008
Cab/FOGS	ISO 10262:1998
Cab/ROPS	ISO 12117-2:2008

Sound Performance

ISO 6395:2008 (external)	103 dB(A)
ISO 6396:2008 (inside cab)	70 dB(A)

- Hearing protection may be needed when operating with an open operator station and cab (when not properly maintained or doors/windows open) for extended periods or in a noisy environment.

Operating Weights and Ground Pressures

	600 mm (24") Triple Grouser Shoes	
	Weight	Ground Pressure
	kg (lb)	kPa (psi)
Base Machine with 6700 kg (14,770 lb) Counterweight and Long Undercarriage		
Reach Boom + R3.2CB2 (10'6") Stick + 1.54 m ³ (2.01 yd ³) HD Bucket	29 700 kg (65,600 lb)	56 kPa (8.2 psi)
Reach Boom + R2.65CB2 (8'8") Stick + 1.54 m ³ (2.01 yd ³) HD Bucket	29 600 kg (65,400 lb)	56 kPa (8.2 psi)
Mass Boom + M2.5DB (8'2") Stick + 2.12 m ³ (2.77 yd ³) HD Bucket	30 500 kg (67,300 lb)	58 kPa (8.4 psi)

All operating weights include a 90% fuel tank with 75 kg (165 lb) operator.

330 GC Hydraulic Excavator Specifications

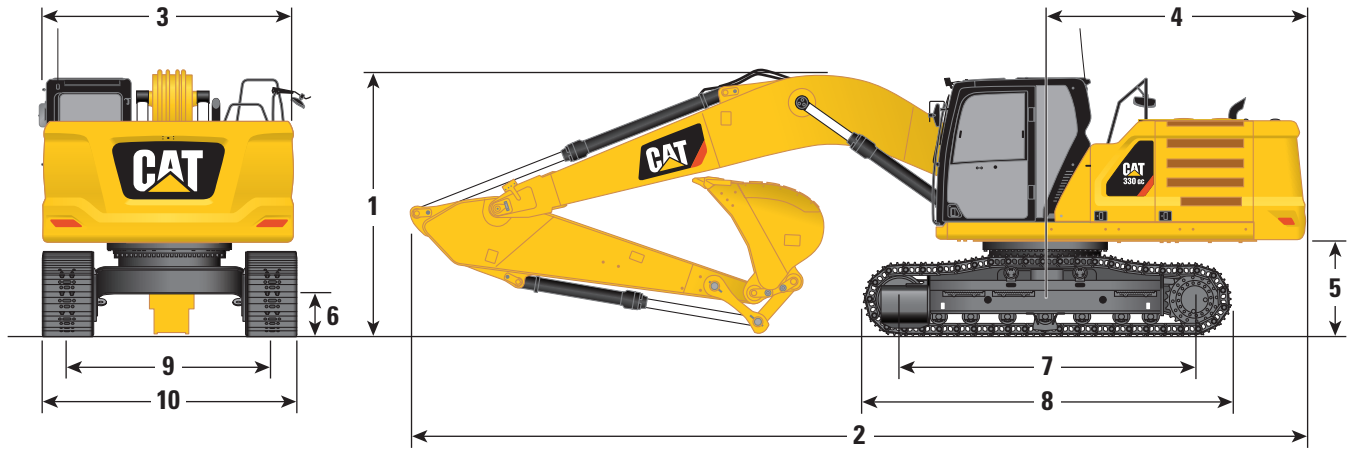
Major Component Weights

	kg	lb
Base machine (6700 kg [14,770 lb] counterweight, upper frame, long undercarriage with HD rollers), with boom cylinders and weight of 90% fuel tank and 75 kg (165 lb) operator included.	21 100	46,600
Track Shoes:		
600 mm (24") Width, 11 mm (0.43") Thick, Triple Grouser Track Shoes	3620	7,980
Two Boom Cylinders	490	1,080
Weight of 90% Fuel Tank and 75 kg (165 lb) Operator	460	1,010
Counterweight:		
6700 kg (14,770 lb) Counterweight	6700	14,770
Undercarriage:		
Long Undercarriage with HD Rollers	6700	14,800
Booms (including lines, pins, stick cylinder):		
Reach Boom 6.15 m (20'2")	2300	5,070
Mass Boom 5.55 m (18'2")	2380	5,250
Sticks (including lines, pins, bucket cylinder, bucket linkage):		
Reach Stick R3.2CB2 (10'6")	1440	3,170
Reach Stick R2.65CB2 (8'8")	1350	2,980
Mass Stick M2.5DB (8'2")	1640	3,620
Buckets (without linkage, with tips and side cutters):		
1.54 m ³ (2.01 yd ³) HD, CB Linkage	1260	2,780
2.12 m ³ (2.77 yd ³) HD, DB Linkage	1740	3,840
Quick Couplers:		
Pin Grabber QC CB with pins	530	1,170
Pin Grabber QC CB without pins	500	1,100
Dedicated QC	430	950

330 GC Hydraulic Excavator Specifications

Dimensions

All dimensions are approximate and may vary depending on bucket selection.

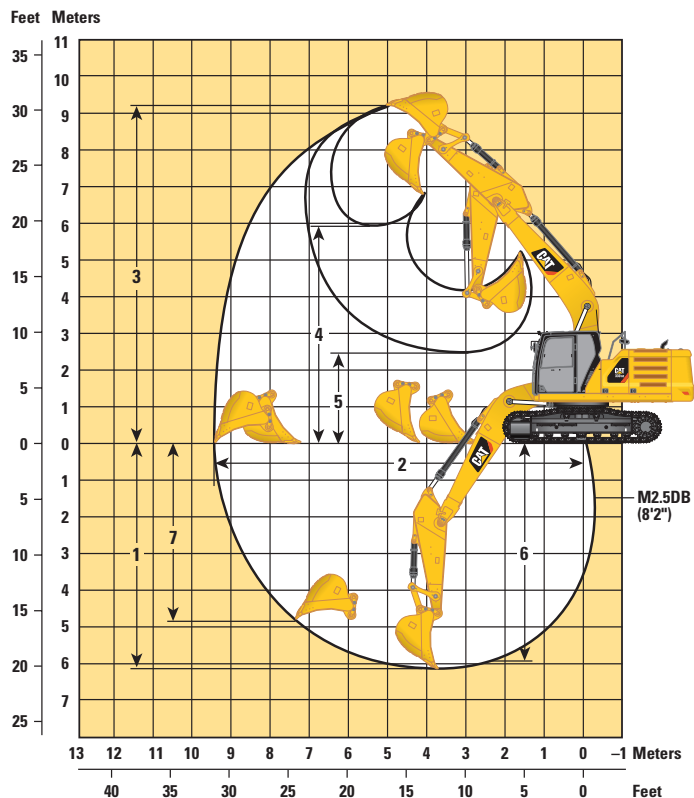
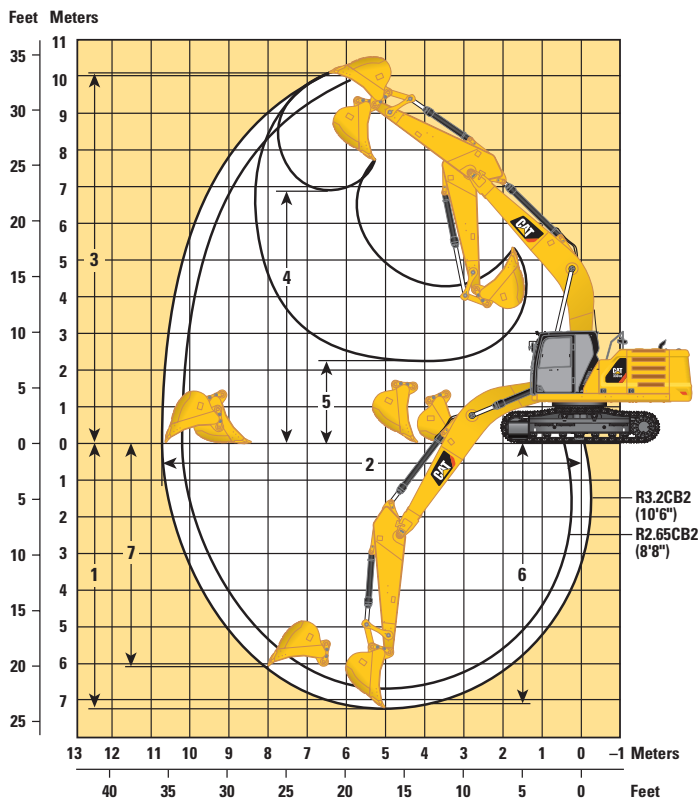


Boom Options	Reach Boom 6.15 m (20'2")				Mass Boom 5.55 m (18'2")	
	Reach Stick R3.2CB2 (10'6")		Reach Stick R2.65CB2 (8'8")		Mass Stick M2.5DB (8'2")	
1 Machine Height:						
Cab Height	3050 mm	10'0"	3050 mm	10'0"	3050 mm	10'0"
FOGS Height	3190 mm	10'6"	3190 mm	10'6"	3190 mm	10'6"
Handrails Height	3050 mm	10'0"	3050 mm	10'0"	3050 mm	10'0"
With Boom/Stick/Bucket Installed	3400 mm	11'2"	3450 mm	11'4"	3520 mm	11'7"
With Boom/Stick Installed	3380 mm	11'1"	3380 mm	11'1"	3430 mm	11'3"
With Boom Installed	3050 mm	10'0"	3050 mm	10'0"	3050 mm	10'0"
2 Machine Length:						
With Boom/Stick/Bucket Installed	10 420 mm	34'2"	10 420 mm	34'2"	9870 mm	32'5"
With Boom/Stick Installed	10 420 mm	34'2"	10 420 mm	34'2"	9850 mm	32'4"
With Boom Installed	9230 mm	30'3"	9230 mm	30'3"	8600 mm	28'3"
3 Upperframe Width without Walkways	2940 mm	9'8"	2940 mm	9'8"	2940 mm	9'8"
4 Tail Swing Radius	3130 mm	10'3"	3130 mm	10'3"	3130 mm	10'3"
5 Counterweight Clearance	1110 mm	3'8"	1110 mm	3'8"	1110 mm	3'8"
6 Ground Clearance	490 mm	1'7"	490 mm	1'7"	490 mm	1'7"
7 Length to Center of Rollers	3990 mm	13'1"	3990 mm	13'1"	3990 mm	13'1"
8 Track Length	4860 mm	15'11"	4860 mm	15'11"	4860 mm	15'11"
9 Track Gauge – Extended	2590 mm	8'6"	2590 mm	8'6"	2590 mm	8'6"
Track Width – 600 mm (24") Shoes	600 mm	24"	600 mm	24"	600 mm	24"
10 Undercarriage Width (with steps/without steps):						
600 mm (24") Shoes	3190 mm	10'6"	3190 mm	10'6"	3190 mm	10'6"
Bucket Type	HD		HD		HD	
Bucket Capacity	1.54 m ³	2.01 yd ³	1.54 m ³	2.01 yd ³	2.12 m ³	2.77 yd ³
Bucket Tip Radius	1658 mm	5'5"	1658 mm	5'5"	1796 mm	5'11"

330 GC Hydraulic Excavator Specifications

Working Ranges and Forces

All dimensions are approximate and may vary depending on bucket selection.



Boom Options

Reach Boom 6.15 m (20'2")

Mass Boom 5.55 m (18'2")

Stick Options

Reach Stick R3.2CB2 (10'6")

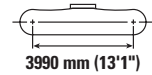
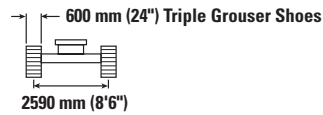
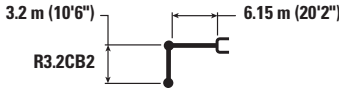
Reach Stick R2.65CB2 (8'8")

Mass Stick M2.5DB (8'2")

	Reach Stick R3.2CB2 (10'6")		Reach Stick R2.65CB2 (8'8")		Mass Stick M2.5DB (8'2")	
1 Maximum Digging Depth	7260 mm	23'10"	6710 mm	22'0"	6150 mm	20'2"
2 Maximum Reach at Ground Line	10 690 mm	35'1"	10 210 mm	33'6"	9480 mm	31'1"
3 Maximum Cutting Height	10 020 mm	32'10"	9910 mm	32'6"	9250 mm	30'4"
4 Maximum Loading Height	6940 mm	22'9"	6790 mm	22'3"	5950 mm	19'6"
5 Minimum Loading Height	2280 mm	7'6"	2830 mm	9'3"	2420 mm	7'11"
6 Maximum Depth Cut for 2440 mm (8 ft) Level Bottom	7100 mm	23'4"	6530 mm	21'5"	5960 mm	19'7"
7 Maximum Vertical Wall Digging Depth	6030 mm	19'9"	5720 mm	18'9"	4860 mm	15'11"
Bucket Digging Force (SAE)	157 kN	35,290 lbf	157 kN	35,290 lbf	183 kN	41,140 lbf
Bucket Digging Force (ISO)	179 kN	40,240 lbf	179 kN	40,240 lbf	211 kN	47,430 lbf
Stick Digging Force (SAE)	123 kN	27,650 lbf	140 kN	31,470 lbf	147 kN	33,050 lbf
Stick Digging Force (ISO)	126 kN	28,330 lbf	145 kN	32,600 lbf	153 kN	34,400 lbf
Bucket Type	HD		HD		HD	
Bucket Capacity	1.54 m ³	2.01 yd ³	1.54 m ³	2.01 yd ³	2.12 m ³	2.77 yd ³
Bucket Tip Radius	1658 mm	5'5"	1658 mm	5'5"	1796 mm	5'11"

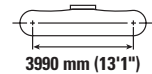
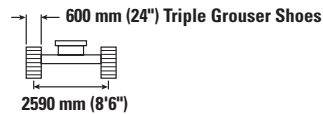
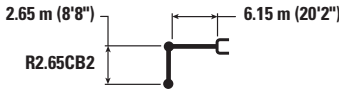
330 GC Hydraulic Excavator Specifications

Reach Boom Lift Capacities – Counterweight: 6.7 mt (14,770 lb) – without Bucket



		1500 mm/60 in		3000 mm/120 in		4500 mm/180 in		6000 mm/240 in		7500 mm/300 in		9000 mm/360 in		mm in		
7500 mm 300 in	kg lb													*5150 *11,350	*5150 *11,350	7270 290
6000 mm 240 in	kg lb									*7200 *15,300	6250 13,450			*4900 *10,750	*4900 *10,750	8230 330
4500 mm 180 in	kg lb							*8400 *18,250	*8400 *18,250	*7600 *16,600	6150 13,200			*4850 *10,650	4750 10,550	8830 350
3000 mm 120 in	kg lb					*12 950 *27,850	12 550 27,000	*9800 *21,250	8250 17,750	*8300 *18,050	5950 12,850	*5950 4550		*5000 *10,950	4450 9,800	9140 360
1500 mm 60 in	kg lb					*15 450 *33,350	11 850 25,500	*11 150 *24,150	7900 17,000	8950 19,200	5800 12,450	*6800 *12,550	4450 9,600	*5300 *11,650	4350 9,550	9190 370
0 mm 0 in	kg lb					*16 600 *35,950	11 500 24,700	*12 050 *26,050	7650 16,500	8800 18,900	5650 12,150			*5850 *12,800	4400 9,700	8990 360
-1500 mm -60 in	kg lb	*6350 *14,200	*6350 *14,200	*10 000 *22,700	*10 000 *22,700	*16 600 *35,950	11 400 24,500	12 150 26,050	7550 16,250	8700 18,750	5600 12,000			*6750 *14,850	4750 10,400	8530 340
-3000 mm -120 in	kg lb	*11 450 *25,650	*11 450 *25,650	*16 150 *36,750	*16 150 *36,750	*15 600 *33,700	11 450 24,650	*11 700 *25,300	7550 16,300	8750 18,850	5600 12,150			8400 18,550	5400 11,950	7740 310
-4500 mm -180 in	kg lb			*18 050 *38,850	*18 050 *38,850	*13 250 *28,450	11 700 25,150	*9800 *20,750	7750 16,700					*8600 *18,900	6950 15,550	6520 260

Reach Boom Lift Capacities – Counterweight: 6.7 mt (14,770 lb) – without Bucket



		3000 mm/120 in		4500 mm/180 in		6000 mm/240 in		7500 mm/300 in		mm in				
7500 mm 300 in	kg lb													
6000 mm 240 in	kg lb							*8150 *17,750	*8150 *17,750	*7650 *14,350	6200 13,250	*6700 *14,900	*6700 *14,900	6670 260
4500 mm 180 in	kg lb							*9100 *19,750	8500 18,350	*8150 *17,800	6100 13,150	*6250 *13,750	5200 11,450	8340 330
3000 mm 120 in	kg lb					*14 100 *30,300	12 300 26,550	*10 450 *22,600	8150 17,600	*8750 *19,050	5950 12,800	*6400 *14,050	4800 10,600	8660 340
1500 mm 60 in	kg lb					*15 600 *35,000	11 750 25,250	*11 650 *25,150	7850 16,950	8950 19,200	5800 12,450	*6800 *14,900	4700 10,350	8720 350
0 mm 0 in	kg lb					*16 550 *36,450	11 500 24,750	12 250 26,400	7650 16,550	8800 18,900	5700 12,250	7350 16,200	4800 10,600	8510 340
-1500 mm -60 in	kg lb	*9750 *22,250	*9750 *22,250	*16 350 *35,500	11 500 24,700	12 200 26,200	7600 16,400	8800 18,900	5650 12,200	8000 17,650	5200 11,450			8020 320
-3000 mm -120 in	kg lb	*18 300 *41,700	*18 300 *41,700	*14 950 *32,300	11 600 24,950	*11 350 *24,400	7650 16,550					*8900 *19,600	6100 13,500	7180 290
-4500 mm -180 in	kg lb	*15 700	*15 700	*11 900 *25,400	11 900 *25,400							*8650 *19,000	8250 18,550	5830 230



ISO 10567



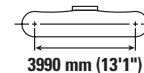
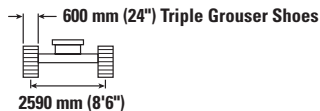
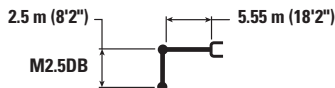
* Indicates that the load is limited by hydraulic lifting capacity rather than tipping load. The above loads are in compliance with hydraulic excavator lift capacity standard ISO 10567:2007. They do not exceed 87% of hydraulic lifting capacity or 75% of tipping load. Weight of all lifting accessories must be deducted from the above lifting capacities. Lifting capacities are based on the machine standing on a firm, uniform supporting surface. The use of a work tool attachment point to handle/lift objects, could affect the machine lift performance.

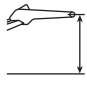


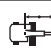

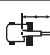

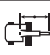

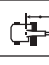

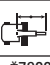
Lift capacity stays with ±5% for all available track shoes.

Always refer to the appropriate Operation and Maintenance Manual for specific product information.

330 GC Hydraulic Excavator Specifications

Mass Boom Lift Capacities – Counterweight: 6.7 mt (14,770 lb) – without Bucket



	3000 mm/120 in		4500 mm/180 in		6000 mm/240 in		7500 mm/300 in				mm in	
												
7500 mm 300 in	kg lb									*7900 *17,550	*7900 *17,550	5500 220
6000 mm 240 in	kg lb				*8750 *19,250	8650 18,550				*7350 *16,200	7200 16,050	6720 270
4500 mm 180 in	kg lb			*11 150 *24,000	*11 150 *24,000	*9450 *20,500	8400 18,100			*7300 *16,050	6000 13,350	7440 300
3000 mm 120 in	kg lb			*13 800 *29,700	12 400 26,700	*10 550 *22,900	8100 17,450	9000 19,300	5800 12,500	*7600 *16,650	5500 12,100	7810 310
1500 mm 60 in	kg lb			*15 950 *34,400	11 750 25,300	*11 650 *25,250	7800 16,750	8850 19,000	5700 12,250	8250 *18,100	5300 11,700	7870 310
0 mm 0 in	kg lb			*16 700 *36,150	11 450 24,650	12 200 26,250	7600 16,350	8750 18,800	5600 12,050	8500 18,750	5450 12,000	7640 300
-1500 mm -60 in	kg lb	*16 300 *37,150	*16 300 *37,150	*16 100 *34,900	11 400 24,550	*11 950 *25,850	7550 16,250			9500 21,000	6050 13,350	7080 280
-3000 mm -120 in	kg lb	*19 200 *41,500	*19 200 *41,500	*14 100 *30,350	11 550 24,900	*10 150	7650			*9850 *21,700	7500 16,700	6110 240



ISO 10567



* Indicates that the load is limited by hydraulic lifting capacity rather than tipping load. The above loads are in compliance with hydraulic excavator lift capacity standard ISO 10567:2007. They do not exceed 87% of hydraulic lifting capacity or 75% of tipping load. Weight of all lifting accessories must be deducted from the above lifting capacities. Lifting capacities are based on the machine standing on a firm, uniform supporting surface. The use of a work tool attachment point to handle/lift objects, could affect the machine lift performance.

Lift capacity stays with ±5% for all available track shoes.

Always refer to the appropriate Operation and Maintenance Manual for specific product information.

330 GC Hydraulic Excavator Specifications

Bucket Specifications and Compatibility

	Linkage	Width		Capacity		Weight		Fill	6.7 mt (14,770 lb) Counterweight		
		mm	in	m ³	yd ³	kg	lb		Reach Boom		Mass Boom
									R3.2 (10'6")	R2.65 (8'8")	M2.5 (8'2")
Pin-On (No Quick Coupler)											
Heavy Duty (HD) – CCL	CB	1450	57	1.60	2.09	1274	2,809	100	⊖	⊙	
	CB	1650	66	1.90	2.49	1369	3,019	100	X	X	
	CB	1750	69	2.00	2.62	1397	3,081	100	X	X	
Heavy Duty (HD) – SEA	CB	1250	49	1.33	1.74	1158	2,554	100	●	●	
	CB	1400	55	1.54	2.02	1263	2,784	100	●	●	
	CB	1500	60	1.76	2.30	1391	3,067	100	⊙	●	
Heavy Duty (HD) – SEA	DB	1500	61	1.88	2.46	1633	3,601	100			●
	DB	1650	67	2.12	2.77	1731	3,817	100			⊙
Extreme Duty (XD) – CCL	DB	1400	56	1.64	2.14	1892	4,171	90			●
Maximum load with pin-on (payload + bucket)								kg	4730	5175	5850
								lb	10,428	11,409	12,897
With Pin Grabber Quick Coupler											
Heavy Duty (HD) – CCL	CB	1450	57	1.60	2.09	1274	2,809	100	○	⊖	
	CB	1650	66	1.90	2.49	1369	3,019	100	⊖	⊙	
	CB	1750	69	2.00	2.62	1397	3,081	100	○	⊖	
Heavy Duty (HD) – SEA	CB	1250	49	1.33	1.74	1158	2,554	100	●	●	
	CB	1400	55	1.54	2.02	1263	2,784	100	⊙	●	
	CB	1500	60	1.76	2.30	1391	3,067	100	⊖	⊙	
Heavy Duty (HD) – SEA	DB	1500	61	1.88	2.46	1633	3,601	100			⊙
	DB	1650	67	2.12	2.77	1731	3,817	100			⊖
Extreme Duty (XD) – CCL	DB	1400	56	1.64	2.14	1892	4,171	90			●
Maximum load with coupler (payload + bucket)								kg	4204	4649	5324
								lb	9,268	10,249	11,737

The above loads are in compliance with hydraulic excavator standard EN474-5:2006 + A3:2013, they do not exceed 87% of hydraulic lifting capacity or 75% of tipping capacity with front linkage fully extended at ground line with bucket curled.

Capacity based on ISO 7451:2007.

Bucket weight with General Duty tips.

Maximum Material Density:

- 2100 kg/m³ (3,500 lb/yd³)
- ⊙ 1800 kg/m³ (3,000 lb/yd³)
- ⊖ 1500 kg/m³ (2,500 lb/yd³)
- 1200 kg/m³ (2,000 lb/yd³)
- X Not Recommended

Caterpillar recommends using appropriate work tools to maximize the value customers receive from our products. Use of work tools, including buckets, which are outside of Caterpillar's recommendations or specifications for weight, dimensions, flows, pressures, etc. may result in less-than-optimal performance, including but not limited to reductions in production, stability, reliability, and component durability. Improper use of a work tool resulting in sweeping, prying, twisting and/or catching of heavy loads will reduce the life of the boom and stick.

Attachments Offering Guide

PIN-ON ATTACHMENTS

Counterweight	Boom Types	Stick Lengths	6.7 mt (14,770 lb)		
			Reach		Mass Excavation
			2.65 m (8'8")	3.20 m (10'6")	2.50 m (8'2")
Hydraulic Hammers	B30		✓	✓	✓
	B35		✓	✓	✓

330 GC Standard and Optional Equipment

Standard and Optional Equipment

Standard and optional equipment may vary. Consult your Cat dealer for details.

	Standard	Optional		Standard	Optional
CAB			ENGINE		
ROPS, standard sound suppression	✓		Two selectable modes: Power, Smart	✓	
Mechanically adjustable seat suspension	✓		One-touch low idle with automatic engine speed control	✓	
Height-adjustable console, three steps with tool	✓		Auto engine idle-shutdown	✓	
High-resolution 203 mm (8") LCD touchscreen monitor	✓		4500 m (14,760 ft) altitude capability with engine power derate above 3000 m (9,840 ft)	✓	
Automatic bi-level air conditioner	✓		52° C (125° F) high-ambient cooling capability without derate	✓	
Jog dial and shortcut keys for monitor control	✓		-18° C (0° F) cold start capability	✓	
Keyless push-to-start engine control	✓		-32° C (-25° F) cold start capability		✓
51 mm (2") seat belt	✓		Cold start block heaters		✓
Bluetooth® integrated radio with USB ports	✓		2 × 115 amp dual alternator	✓	
12V DC outlets (×2)	✓		Sealed double element air filter with integrated precleaner	✓	
Document storage	✓		Two-stage fuel filtration with water separator and indicator	✓	
Cup and bottle holders	✓		Electric Fuel Priming Pump	✓	
Openable two-piece front window	✓		On-demand electric cooling fans with auto-reverse function	✓	
Upper radial wiper with washer	✓		Biodiesel capability up to B20	✓	
Openable steel skylight hatch	✓		HYDRAULIC SYSTEM		
LED dome and lower interior lights	✓		Electronic main control valve	✓	
Roller front sunscreen	✓		Electric boom regeneration circuit	✓	
Roller rear sunscreen		✓	Stick regeneration circuit	✓	
Rear window emergency exit	✓		Automatic hydraulic oil warm up	✓	
Washable floor mat	✓		Automatic two-speed travel	✓	
Beacon ready	✓		Boom and stick drift reduction valve	✓	
CAT CONNECT TECHNOLOGY			High performance hydraulic return filter	✓	
Cat Product Link™	✓		Final drive with bio hydraulic oil capable travel motor	✓	
			Fine swing control		✓
			Hammer return filter	✓	
			Tool Control (two pump, one/two way high-pressure flow)	✓	
			Medium-pressure circuit		✓
			Common Quick Coupler Circuit for Cat Pin Grabber and CW Dedicated		✓

(continued on next page)

330 GC Standard and Optional Equipment

Standard and Optional Equipment *(continued)*

Standard and optional equipment may vary. Consult your Cat dealer for details.

	Standard	Optional		Standard	Optional
BOOMS, STICKS AND LINKAGES			SERVICE AND MAINTENANCE		
6.15 m (20'2") Reach boom		✓	Grouped location of engine oil and fuel filters	✓	
5.55 m (18'2") Mass boom		✓	Ground level second dipstick for engine oil	✓	
3.2 m (10'6") Reach stick, CB2 Linkage		✓	Side entry to service platform	✓	
2.65 m (8'8") Reach stick, CB2 Linkage		✓	Scheduled Oil Sampling (S·O·S SM) ports	✓	
2.5 m (8'2") Mass stick, DB Linkage		✓	Preventative maintenance ready (QuickEvac TM)		✓
Bucket linkage, CB family with lifting eye		✓	Electric refueling pump with automatic shut off		✓
Bucket linkage, DB family with lifting eye		✓	Radiator screen		✓
UNDERCARRIAGE AND STRUCTURES			SAFETY AND SECURITY		
Track guiding guard, segmented three piece	✓		Rearview camera	✓	
Bottom guard		✓	Right-side-view camera	✓	
HD bottom guard		✓	Cat asset tracker		✓
Travel motor guard	✓		Secure start with PIN code	✓	
Grease lubricated track	✓		Caterpillar One Key security system	✓	
Base frame with HD rollers	✓		Lockable external tool/storage box	✓	
Tie-down points on base frame	✓		Lockable door, fuel, and hydraulic tank locks	✓	
6700 kg (14,770 lb) counterweight	✓		Lockable fuel drain compartment	✓	
600 mm (24") triple grouser track shoes	✓		Service platform with anti-skid plate and recessed bolts	✓	
ELECTRICAL SYSTEM			RH handrail and hand hold (ISO 2867:2011 compliant)	✓	
2 × Machine Electronic Control Module	✓		Cab mirror for RH track edge	✓	
Maintenance-free 1,000 CCA batteries (×2)	✓		Signaling/warning horn	✓	
After engine shutdown, programmable time delay LED working lights: one chassis mounted, one LH boom mounted	✓		Ground-level secondary engine shutoff switch in cab	✓	
Centralized electrical disconnect switch	✓		Hydraulic lock out lever that neutralizes all controls	✓	
LED chassis light, left-side boom light	✓		Travel alarm		✓
LED cab lights, right-side boom light		✓			
Compatible with Electronic Technician	✓				

Dealer Installed Kits and Attachments

Attachments may vary. Consult your Cat dealer for details.

CAB

- RH electrical pedal (two-way) for tool control
- Radial lower wiper for two piece (70/30) windshield, with washer
- Rain protector plus cab light cover
- Polycarbonate roof hatch

SAFETY AND SECURITY

- Seat belt, retractable (75 mm/3 in width)
- Bluetooth receiver

GUARDS

- Side rubber bumper guard
- STD swivel guard
- HD swivel guard
- Falling object guard system (not compatible with cab light cover, rain protector)
- Mesh guard full front (not compatible with cab light cover, rain protector)
- Full protecting vandalism guard (not compatible with cab light cover, rain protector)

ELECTRICAL

- Jump start wiring

HYDRAULIC

- Tool Control (two pump, one/two way high-pressure flow)
- Medium-pressure circuit
- Common Quick Coupler Circuit for Cat Pin Grabber and CW Dedicated

For more complete information on Cat products, dealer services, and industry solutions, visit us on the web at www.cat.com

© 2018 Caterpillar
All rights reserved

Materials and specifications are subject to change without notice. Featured machines in photos may include additional equipment. See your Cat dealer for available options.

CAT, CATERPILLAR, LET'S DO THE WORK, their respective logos, "Caterpillar Yellow", the "Power Edge" trade dress as well as corporate and product identity used herein, are trademarks of Caterpillar and may not be used without permission.

AEXJ0084 (11-2018)
Build Number: 07A
(Korea)

