



# 330 GC

## Hydraulic Excavator

# Technical Specifications

### Engine

Engine Model	Cat® C7.1	
Net Power – ISO 9249	151 kW	202 hp
Net Power – SAE J1349	151 kW	202 hp
Gross Power – ISO 14396/SAE J1995	152 kW	204 hp
Bore	105 mm	4 in
Stroke	135 mm	5 in
Displacement	7.01 L	428 in <sup>3</sup>

- Meets U.S. EPA Tier 4 Final, EU Stage IV, and Japan 2014 emission standards.
- Recommended for use up to 4500 m (14,760 ft) altitude with engine power derate above 3000 m (9,840 ft).
- Net power advertised is the power available at the flywheel when the engine is equipped with fan, air cleaner, muffler, and alternator.
- Rating at 1,800 rpm.

### Engine rpm

Operation	1,750 rpm
Travel	1,750 rpm

### Swing Mechanism

Swing Speed	11.50 rpm
Swing Torque	82 kN·m    60,628 lbf·ft

### Weights

Operating Weight	30 700 kg    67,700 lb
------------------	------------------------

- Long undercarriage, Reach boom, R3.2 m (10'6") stick, HD 1.54 m<sup>3</sup> (2.01 yd<sup>3</sup>) bucket, 800 mm (31") triple grouser shoes and 6700 kg (14,770 lb) counterweight.

### Track

Standard Track Shoes Width	800 mm	31 in
Number of Shoes (each side)	50	
Number of Track Rollers (each side)	9	
Number of Carrier Rollers (each side)	2	

### Drive

Maximum Gradeability	35°/70%	
Maximum Travel Speed	5.3 km/h	3.3 mph
Maximum Drawbar Pull	248 kN	55,753 lbf

### Hydraulic System

Main System – Maximum Flow (Implement)	560 L/min (280 × 2 pumps)	148 gal/min (74 × 2 pumps)
Maximum Pressure – Equipment	35 000 kPa	5,075 psi
Maximum Pressure – Travel	35 000 kPa	5,075 psi
Maximum Pressure – Swing	28 400 kPa	4,120 psi
Boom Cylinder – Bore	140 mm	6 in
Boom Cylinder – Stroke	1407 mm	55 in
Stick Cylinder – Bore	150 mm	6 in
Stick Cylinder – Stroke	1646 mm	65 in
Bucket Cylinder – Bore	135 mm	5 in
Bucket Cylinder – Stroke	1156 mm	46 in

# 330 GC Hydraulic Excavator Specifications

## Service Refill Capacity

Fuel Tank Capacity	474 L	125.2 gal
Cooling System	25 L	6.6 gal
Engine Oil	25 L	6.6 gal
Swing Drive	10 L	2.6 gal
Final Drive (each)	5.5 L	1.5 gal
Hydraulic System (including tank)	310 L	81.9 gal
Hydraulic Tank	147 L	38.8 gal
DEF Tank	41 L	10.8 gal

## Standards

Brakes	ISO 10265: 2008
Cab/FOGS	ISO 10262: 1998
Cab/ROPS	ISO 12117-2: 2008

## Sound Performance

ISO 6395 (external)	103 dB(A)
ISO 6396 (inside cab)	70 dB(A)

- Hearing protection may be needed when operating with an open operator station and cab (when not properly maintained or doors/windows open) for extended periods or in a noisy environment.

## Operating Weights and Ground Pressures

	800 mm (31") Triple Grouser Shoes	
	Weight	Ground Pressure
	kg (lb)	kPa (psi)
<b>Base Machine with 6700 kg (14,770 lb) Counterweight and Long Undercarriage</b>		
Reach Boom + R3.2CB2 (10'6") Stick + 1.54 m <sup>3</sup> (2.01 yd <sup>3</sup> ) HD Bucket	30 700 kg (67,700 lb)	44 kPa (6.3 psi)

All operating weights include a 90% fuel tank with 75 kg (165 lb) operator.

# 330 GC Hydraulic Excavator Specifications

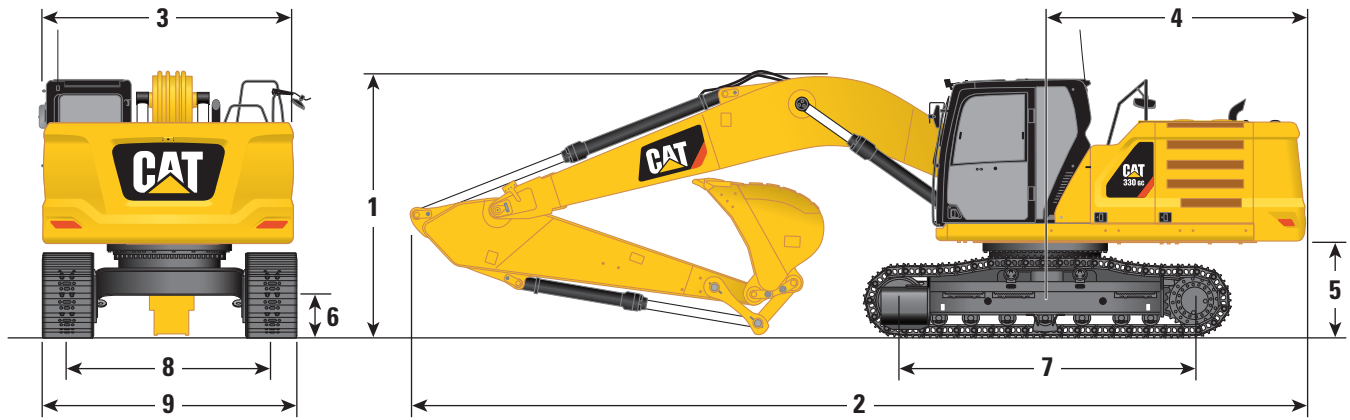
## Major Component Weights

	kg	lb
Base machine (6700 kg (14,770 lb) counterweight, upper frame, long undercarriage with HD rollers), with boom cylinders and weight of 90% fuel tank and 75 kg (165 lb) operator included.	21 100	46,600
Track Shoes:		
800 mm (31") Width, 13 mm (0.51") Thick, Triple Grouser Track Shoes with Step Extension for ISO 2867	4590	10,120
Two Boom Cylinders	490	1,080
Weight of 90% Fuel Tank and 75 kg (165 lb) Operator	460	1,010
Counterweight:		
6700 kg (14,770 lb) Counterweight	6700	14,770
Undercarriage:		
Long Undercarriage with HD Rollers	6700	14,800
Boom (including lines, pins, stick cylinder):		
Reach Boom 6.15 m (20'2")	2300	5,070
Stick (including lines, pins, bucket cylinder, bucket linkage):		
Reach Stick R3.2CB2 (10'6")	1440	3,170
Buckets (without linkage, with tips and side cutters):		
0.91 m <sup>3</sup> (1.19 yd <sup>3</sup> ) HD, CB Linkage	990	2,190
1.12 m <sup>3</sup> (1.46 yd <sup>3</sup> ) HD, CB Linkage	1090	2,400
1.33 m <sup>3</sup> (1.74 yd <sup>3</sup> ) HD, CB Linkage	1160	2,560
1.54 m <sup>3</sup> (2.01 yd <sup>3</sup> ) HD, CB Linkage	1260	2,780
Quick Couplers:		
Pin Grabber QC CB with pins	530	1,170
Pin Grabber QC CB without pins	500	1,100
Dedicated QC	430	950

# 330 GC Hydraulic Excavator Specifications

## Dimensions

All dimensions are approximate and may vary depending on bucket selection.



### Boom Options

Reach Boom  
6.15 m (20'2")

### Stick Options

Reach Stick  
R3.2CB2 (10'6")

#### 1 Machine Height:

Cab Height	3050 mm	10'0"
FOGS Height	3190 mm	10'6"
Handrails Height	3050 mm	10'0"
With Boom/Stick/Bucket Installed	3400 mm	11'2"
With Boom/Stick Installed	3380 mm	11'1"
With Boom Installed	3050 mm	10'0"

#### 2 Machine Length:

With Boom/Stick/Bucket Installed	10 420 mm	34'2"
With Boom/Stick Installed	10 420 mm	34'2"
With Boom Installed	9230 mm	30'3"

#### 3 Upperframe Width without Walkways

2940 mm 9'8"

#### 4 Tail Swing Radius

3130 mm 10'3"

#### 5 Counterweight Clearance

1110 mm 3'8"

#### 6 Ground Clearance

490 mm 1'7"

#### 7 Track Length – Length to Center of Rollers

3990 mm 13'1"

#### 8 Track Gauge – Extended

2590 mm 8'6"

#### 9 Track Width/Undercarriage Width (with steps/without steps):

800 mm (31") Shoes 3390 mm 11'1"

#### Bucket Type

HD

#### Bucket Capacity

1.54 m<sup>3</sup> 2.01 yd<sup>3</sup>

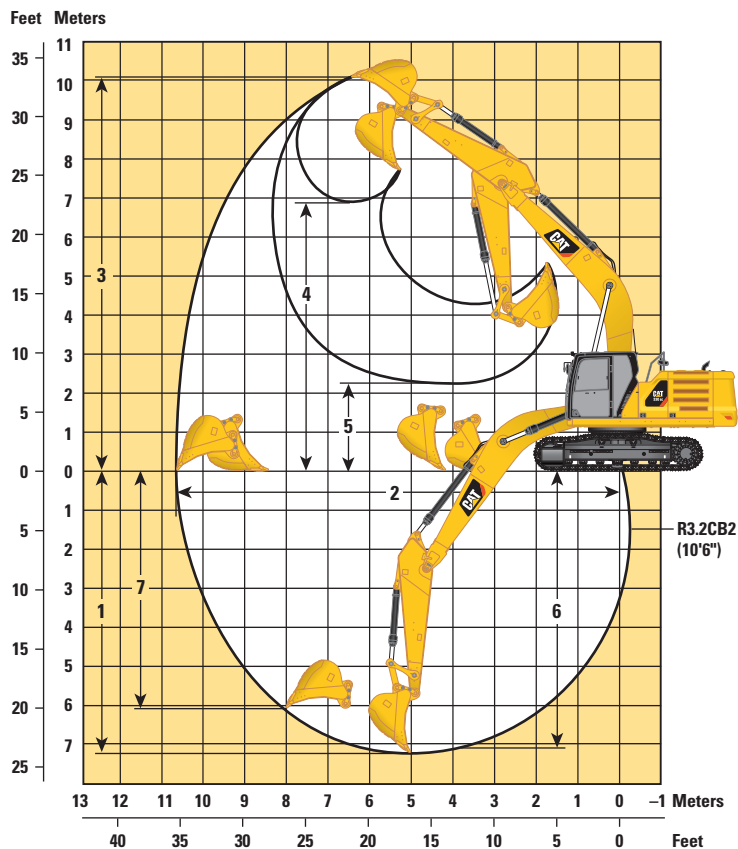
#### Bucket Tip Radius

1658 mm 5'5"

# 330 GC Hydraulic Excavator Specifications

## Working Ranges and Forces

All dimensions are approximate and may vary depending on bucket selection.



### Boom Options

Reach Boom  
6.15 m (20'2")

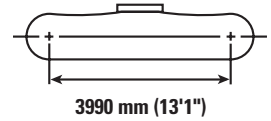
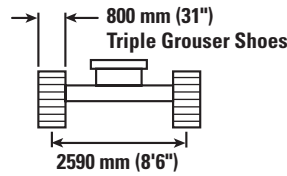
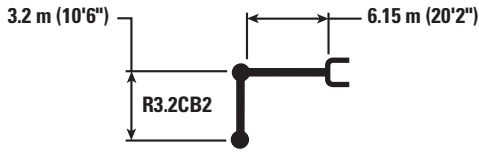
### Stick Options



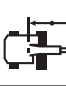

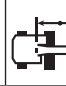










Reach Stick  
R3.2CB2 (10'6")

1 Maximum Digging Depth	7260 mm	23'10"
2 Maximum Reach at Ground Line	10 690 mm	35'1"
3 Maximum Cutting Height	10 020 mm	32'10"
4 Maximum Loading Height	6940 mm	22'9"
5 Minimum Loading Height	2280 mm	7'6"
6 Maximum Depth Cut for 2440 mm (8 ft) Level Bottom	7100 mm	23'4"
7 Maximum Vertical Wall Digging Depth	6030 mm	19'9"
Bucket Digging Force (SAE)	157 kN	35,290 lbf
Bucket Digging Force (ISO)	179 kN	40,240 lbf
Stick Digging Force (SAE)	123 kN	27,650 lbf
Stick Digging Force (ISO)	126 kN	28,330 lbf
Bucket Type	HD	
Bucket Capacity	1.54 m <sup>3</sup>	2.01 yd <sup>3</sup>
Bucket Tip Radius	1658 mm	5'5"

# 330 GC Hydraulic Excavator Specifications

## Reach Boom Lift Capacities – Counterweight: 6.7 mt (14,770 lb) – without Bucket



		1.5 m/5.0 ft		3.0 m/10.0 ft		4.5 m/15.0 ft		6.0 m/20.0 ft		7.5 m/25.0 ft		9.0 m/30.0 ft				m ft	
																	
7.5 m 25.0 ft	kg lb														*5150 *11,350	*5150 *11,350	7.27 24.17
6.0 m 20.0 ft	kg lb									*7200 *15,300	6450 13,800				*4900 *10,750	*4900 *10,750	8.23 27.50
4.5 m 15.0 ft	kg lb							*8400 *18,250	*8400 *18,250	*7600 *16,600	6300 13,600				*4850 *10,650	*4850 *10,650	8.83 29.17
3.0 m 10.0 ft	kg lb					*12 950 *27,850	12 850 27,700	*9800 *21,250	8450 18,200	*8300 *18,050	6150 13,200	*5950 4700			*5000 *10,950	4600 10,100	9.14 30.00
1.5 m 5.0 ft	kg lb					*15 450 *33,350	12 150 26,200	*11 150 *24,150	8100 17,450	*9050 *19,600	5950 12,800	*6800 *12,550	4600 9,900		*5300 *11,650	4450 9,800	9.19 30.83
0 m 0 ft	kg lb					*16 600 *35,950	11 800 25,400	*12 050 *26,050	7850 16,950	9050 19,450	5800 12,500				*5850 *12,800	4550 10,000	8.99 30.00
-1.5 m -5.0 ft	kg lb	*6350 *14,200	*6350 *14,200	*10 000 *22,700	*10 000 *22,700	*16 600 *35,950	11 700 25,200	*12 300 *26,600	7750 16,700	8950 19,300	5750 12,400	11 700		*6750 *14,850	4850 10,700	8.53 28.33	
-3.0 m -10.0 ft	kg lb	*11 450 *25,650	*11 450 *25,650	*16 150 *36,750	*16 150 *36,750	*15 600 *33,700	11 800 25,350	*11 700 *25,300	7800 16,750	*8950 *19,100	5800 12,500			*8450 *18,750	5550 12,300	7.74 25.83	
-4.5 m -15.0 ft	kg lb			*18 050 *38,850	*18 050 *38,850	*13 250 *28,450	12 000 25,850	*9800 *20,750	7950 17,150					*8600 *18,900	7150 15,950	6.52 21.67	



ISO 10567



\*Indicates that the load is limited by hydraulic lifting capacity rather than tipping load. The above loads are in compliance with hydraulic excavator lift capacity standard ISO 10567:2007. They do not exceed 87% of hydraulic lifting capacity or 75% of tipping load. Weight of all lifting accessories must be deducted from the above lifting capacities. Lifting capacities are based on the machine standing on a firm, uniform supporting surface. The use of a work tool attachment point to handle/lift objects, could affect the machine lift performance.

Lift capacity stays with ±5% for all available track shoes.

Always refer to the appropriate Operation and Maintenance Manual for specific product information.

# 330 GC Hydraulic Excavator Specifications

## Bucket Specifications and Compatibility

	Linkage	Width		Capacity		Weight		Fill %	6.7 mt (14,770 lb) Counterweight
		mm	in	m <sup>3</sup>	yd <sup>3</sup>	kg	lb		Reach Boom
									R3.2 (10'6")
<b>Pin-On (No Quick Coupler)</b>									
General Duty Capacity (GDC)	CB	600	24	0.63	0.83	724	1,597	100	●
	CB	750	30	0.86	1.13	811	1,788	100	●
	CB	900	36	1.09	1.43	908	2,002	100	●
	CB	1050	42	1.34	1.75	980	2,161	100	●
	CB	1200	48	1.58	2.07	1072	2,363	100	●
	CB	1350	54	1.83	2.40	1166	2,570	100	⊙
General Duty Capacity (GDC) – WT (Wide Tip)	CB	600	24	0.63	0.83	749	1,652	100	●
	CB	750	30	0.86	1.13	845	1,863	100	●
	CB	900	36	1.09	1.43	942	2,077	100	●
	CB	1050	42	1.34	1.75	1022	2,253	100	●
	CB	1200	48	1.58	2.07	1123	2,475	100	●
	CB	1350	54	1.83	2.40	1224	2,698	100	⊙
Heavy Duty (HD)	CB	600	24	0.52	0.68	733	1,616	100	●
	CB	750	30	0.71	0.93	851	1,876	100	●
	CB	900	36	0.91	1.19	945	2,084	100	●
	CB	1050	42	1.12	1.46	1041	2,295	100	●
	CB	1200	48	1.33	1.74	1112	2,452	100	●
	CB	1350	54	1.54	2.02	1212	2,672	100	●
	CB	1500	60	1.76	2.30	1306	2,879	100	⊙
	CB	1650	66	1.97	2.58	1383	3,048	100	X
Heavy Duty Power (HDP)	CB	1050	42	1.12	1.47	1070	2,360	100	●
	CB	1200	48	1.33	1.73	1148	2,532	100	●
	CB	1350	54	1.53	2.01	1253	2,762	100	●
Severe Duty (SD)	CB	600	24	0.52	0.68	755	1,665	90	●
	CB	750	30	0.71	0.93	915	2,017	90	●
	CB	900	36	0.91	1.19	1000	2,204	90	●
	CB	1050	42	1.12	1.46	1099	2,424	90	●
	CB	1200	48	1.33	1.74	1177	2,596	90	●
								kg	4730
								lb	10,428

The above loads are in compliance with hydraulic excavator standard EN474-5:2006 + A3:2013, they do not exceed 87% of hydraulic lifting capacity or 75% of tipping capacity with front linkage fully extended at ground line with bucket curled.

Capacity based on ISO 7451:2007.

Bucket weight with General Duty tips.

**Maximum Material Density:**

● 2100 kg/m<sup>3</sup> (3,500 lb/yd<sup>3</sup>)

⊙ 1800 kg/m<sup>3</sup> (3,000 lb/yd<sup>3</sup>)

X Not Recommended

Caterpillar recommends using appropriate work tools to maximize the value customers receive from our products. Use of work tools, including buckets, which are outside of Caterpillar's recommendations or specifications for weight, dimensions, flows, pressures, etc. may result in less-than-optimal performance, including but not limited to reductions in production, stability, reliability, and component durability. Improper use of a work tool resulting in sweeping, prying, twisting and/or catching of heavy loads will reduce the life of the boom and stick.

# 330 GC Hydraulic Excavator Specifications

## Bucket Specifications and Compatibility

	Linkage	Width		Capacity		Weight		Fill %	6.7 mt (14,770 lb) Counterweight
		mm	in	m <sup>3</sup>	yd <sup>3</sup>	kg	lb		Reach Boom
									R3.2 (10'6")
<b>With Pin Grabber Quick Coupler</b>									
General Duty Capacity (GDC)	CB	600	24	0.63	0.83	724	1,597	100	●
	CB	750	30	0.86	1.13	811	1,788	100	●
	CB	900	36	1.09	1.43	908	2,002	100	●
	CB	1050	42	1.34	1.75	980	2,161	100	●
	CB	1200	48	1.58	2.07	1072	2,363	100	⊙
	CB	1350	54	1.83	2.40	1166	2,570	100	⊖
General Duty Capacity (GDC) – WT (Wide Tip)	CB	600	24	0.63	0.83	749	1,652	100	●
	CB	750	30	0.86	1.13	845	1,863	100	●
	CB	900	36	1.09	1.43	942	2,077	100	●
	CB	1050	42	1.34	1.75	1022	2,253	100	●
	CB	1200	48	1.58	2.07	1123	2,475	100	⊙
	CB	1350	54	1.83	2.40	1224	2,698	100	⊖
Heavy Duty (HD)	CB	600	24	0.52	0.68	733	1,616	100	●
	CB	750	30	0.71	0.93	851	1,876	100	●
	CB	900	36	0.91	1.19	945	2,084	100	●
	CB	1050	42	1.12	1.46	1041	2,295	100	●
	CB	1200	48	1.33	1.74	1112	2,452	100	●
	CB	1350	54	1.54	2.02	1212	2,672	100	⊙
	CB	1500	60	1.76	2.30	1306	2,879	100	⊖
	CB	1650	66	1.97	2.58	1383	3,048	100	⊖
Heavy Duty Power (HDP)	CB	1050	42	1.12	1.47	1070	2,360	100	●
	CB	1200	48	1.33	1.73	1148	2,532	100	●
	CB	1350	54	1.53	2.01	1253	2,762	100	⊙
Heavy Duty (HD) – PGP	CB	750	30	0.70	0.91	879	1,938	100	●
	CB	1050	42	1.08	1.42	1110	2,448	100	●
	CB	1200	48	1.28	1.68	1191	2,626	100	●
	CB	1350	54	1.49	1.94	1299	2,864	100	⊙
	CB	1500	60	1.69	2.21	1406	3,099	100	⊖
Severe Duty (SD)	CB	600	24	0.52	0.68	755	1,665	90	●
	CB	750	30	0.71	0.93	915	2,017	90	●
	CB	900	36	0.91	1.19	1000	2,204	90	●
	CB	1050	42	1.12	1.46	1099	2,424	90	●
	CB	1200	48	1.33	1.74	1177	2,596	90	●
Severe Duty (SD) – PGP	CB	600	24	0.51	0.66	832	1,835	90	●
	CB	900	36	0.88	1.16	1062	2,341	90	●
	CB	1050	42	1.08	1.42	1170	2,580	90	●
	CB	1200	48	1.28	1.68	1257	2,772	90	●
								kg	4204
								lb	9,268

The above loads are in compliance with hydraulic excavator standard EN474-5:2006 + A3:2013, they do not exceed 87% of hydraulic lifting capacity or 75% of tipping capacity with front linkage fully extended at ground line with bucket curled.

Capacity based on ISO 7451:2007.

Bucket weight with General Duty tips.

### Maximum Material Density:

- 2100 kg/m<sup>3</sup> (3,500 lb/yd<sup>3</sup>)
- ⊙ 1800 kg/m<sup>3</sup> (3,000 lb/yd<sup>3</sup>)
- ⊖ 1500 kg/m<sup>3</sup> (2,500 lb/yd<sup>3</sup>)

Caterpillar recommends using appropriate work tools to maximize the value customers receive from our products. Use of work tools, including buckets, which are outside of Caterpillar's recommendations or specifications for weight, dimensions, flows, pressures, etc. may result in less-than-optimal performance, including but not limited to reductions in production, stability, reliability, and component durability. Improper use of a work tool resulting in sweeping, prying, twisting and/or catching of heavy loads will reduce the life of the boom and stick.



# 330 GC Hydraulic Excavator Specifications

## Attachments Offering Guide

### PIN-ON ATTACHMENTS

Counterweight		6.7 mt (14,770 lb)
Boom Type		Reach
Stick Length		3.2 m (10'6")
Hydraulic Hammers	H120Es	✓
	H130Es	✓
	H140Es	✓
	B30	✓
	B35	✓
Multi-Processors	MP324 CC Jaw	✓
	MP324 D Jaw	✓
	MP324 P Jaw	✓
	MP324 S Jaw	✓
	MP324 TS Jaw	✓
	MP324 U Jaw	✓
Pulverizers	P225	✓
Demolition and Sorting Grapples	G320B	✓
	G320B WH	✓
	G325B	✓
Compactors (Vibratory Plate)	CVP110	✓
Mobile and Scrap Demolition Shears	S3025	✓
	S3035	✓
Orange Peel Grapples		✓
Contractors' Grapples		✓
Trash Grapples		✓
Rakes		✓
Rippers		✓
Thumbs*		✓
Cat Pin Grabber Couplers		✓

\*Contact your Cat dealer for Thumb compatibility based on your application and machine configuration.

(continued on next page)

# 330 GC Hydraulic Excavator Specifications

## Attachments Offering Guide *(continued)*

### CAT PIN GRABBER COUPLER ATTACHMENTS

<b>Counterweight</b>		<b>6.7 mt (14,770 lb)</b>
<b>Boom Type</b>		<b>Reach</b>
<b>Stick Length</b>		<b>3.2 m (10'6")</b>
Hydraulic Hammers	H120Es	✓
	H130Es	✓
	H140Es	✓
	B30	✓
	B35	✓
Multi-Processors	MP324 CC Jaw	✓
	MP324 D Jaw	✓
	MP324 P Jaw	✓
	MP324 S Jaw	✓
	MP324 TS Jaw	✓
	MP324 U Jaw	✓
Pulverizer	P225	✓
Demolition and Sorting Grapples	G320B	✓
	G320B WH	✓
Compactors (Vibratory Plate)	CVP110	✓
Mobile and Scrap Demolition Shears	S3025	✓
	S3035	✓
Contractors' Grapples		✓
Rakes		✓
Rippers		✓
Thumbs*		✓

### BOOM-MOUNTED ATTACHMENTS

<b>Counterweight</b>		<b>6.7 mt (14,770 lb)</b>
<b>Boom Type</b>		<b>Reach</b>
Mobile Scrap and Demolition Shears	S2070	✓
	S3050	✓

\*Contact your Cat dealer for Thumb compatibility based on your application and machine configuration.

## Standard and Optional Equipment

Equipment may vary. Consult your Cat dealer for details.

	Standard	Optional		Standard	Optional
<b>CAB</b>			<b>ENGINE</b>		
ROPS, standard sound suppression	✓		Two selectable modes: Power, Smart	✓	
Mechanically adjustable seat suspension	✓		One-touch low idle with automatic engine speed control	✓	
Height-adjustable console, three steps with tool	✓		Auto engine idle-shutdown	✓	
High-resolution 203 mm (8") LCD touch screen monitor	✓		4500 m (14,760 ft) altitude capability with engine power derate above 3000 m (9,840 ft)	✓	
Automatic bi-level air conditioner	✓		52° C (125° F) high-ambient cooling capability without de-rate	✓	
Jog dial and shortcut keys for monitor control	✓		-18° C (0° F) cold start capability	✓	
Keyless push-to-start engine control	✓		-32° C (-25° F) cold start capability		✓
51 mm (2") seat belt	✓		2 × 115 amp dual alternator	✓	
Bluetooth® integrated radio with USB ports	✓		Sealed double element air filter with integrated precleaner	✓	
12V DC outlets (×2)	✓		Two-stage fuel filtration with water separator and indicator	✓	
Document storage	✓		Electric Fuel Priming Pump	✓	
Cup and bottle holders	✓		On-demand electric cooling fans with auto-reverse function	✓	
Openable two-piece front window	✓		Biodiesel capability up to B20	✓	
Upper radial wiper with washer	✓		<b>HYDRAULIC SYSTEM</b>		
Openable steel skylight hatch	✓		Electronic main control valve	✓	
LED dome and lower interior lights	✓		Electric boom regeneration circuit	✓	
Roller front sunscreen	✓		Stick regeneration circuit	✓	
Roller rear sunscreen		✓	Automatic hydraulic oil warm up	✓	
Rear window emergency exit	✓		Automatic two-speed travel	✓	
Washable floor mat	✓		Boom and stick drift reduction valve	✓	
Beacon ready	✓		Boom lowering check valve		✓
<b>CAT CONNECT TECHNOLOGY</b>			Stick lowering check valve		✓
Cat Product Link	✓		High performance hydraulic return filter	✓	
			Final drive with bio hydraulic oil capable travel motor	✓	
			Fine swing control	✓	
			Tool Control (two pump, one/two way high-pressure flow)		✓
			Common Quick Coupler Circuit for Cat Pin Grabber and CW Dedicated		✓
			Electronic Pattern Changer (requires activation)	✓	

(continued on next page)

# 330 GC Standard and Optional Equipment

## Standard and Optional Equipment *(continued)*

Standard and optional equipment may vary. Consult your Cat dealer for details.

	Standard	Optional		Standard	Optional
<b>BOOMS, STICKS AND LINKAGES</b>			<b>SERVICE AND MAINTENANCE</b>		
6.15 m (20'2") reach boom	✓		Grouped location of engine oil and fuel filters	✓	
3.2 m (10'6") reach stick, CB2 Linkage	✓		Ground level second dipstick for engine oil	✓	
Bucket Linkage, CB2 family with lifting eye	✓		Side entry to service platform	✓	
<b>UNDERCARRIAGE AND STRUCTURES</b>			Scheduled Oil Sampling (S·O·S <sup>SM</sup> ) ports	✓	
Track guiding guard, segmented three piece	✓		Radiator screen		✓
Bottom guard	✓		<b>SAFETY AND SECURITY</b>		
Travel motor guard	✓		Rearview camera	✓	
Grease lubricated track	✓		Right-side-view camera	✓	
Base frame with HD rollers	✓		Cat asset tracker		✓
Tie-down points on base frame	✓		Secure start with PIN code	✓	
6700 kg (14,770 lb) counterweight	✓		Caterpillar One Key security system	✓	
800 mm (31") triple grouser track shoes	✓		Lockable external tool/storage box	✓	
<b>ELECTRICAL SYSTEM</b>			Lockable door, fuel, and hydraulic tank locks	✓	
2 × Machine Electronic Control Module	✓		Lockable fuel drain compartment	✓	
Maintenance-free 1,000 CCA batteries (×2)	✓		Service platform with anti-skid plate and recessed bolts	✓	
After engine shutdown, programmable time delay LED working lights: one chassis mounted, one LH boom mounted	✓		RH handrail and hand hold (ISO 2867:2011 Compliant)	✓	
Centralized electrical disconnect switch	✓		Cab mirror for RH track edge	✓	
LED chassis light, LH and RH boom lights, cab lights	✓		Signaling/warning horn	✓	
Compatible with Electronic Technician	✓		Ground-level secondary engine shutoff switch in cab	✓	
			Hydraulic lock out lever that neutralizes all controls	✓	
			Travel alarm	✓	

## Dealer Installed Kits and Attachments

Attachments may vary. Consult your Cat dealer for details.

### CAB

- LH/RH electrical pedal (two-way) for tool control
- Dual exit rear window kit
- Radial lower wiper for two piece (70/30) windshield, with washer
- Rain protector plus cab light cover
- Polycarbonate roof hatch

### SAFETY AND SECURITY

- Seat belt, retractable (75 mm/3 in width)
- Bluetooth receiver

### GUARDS

- STD swivel guard
- HD swivel guard
- Side rubber bumper guard
- Falling object guard system (not compatible with cab light cover, rain protector)
- Mesh guard full front (not compatible with cab light cover, rain protector)
- Mesh guard lower half front
- Full protecting vandalism guard (not compatible with cab light cover, rain protector)

### ELECTRICAL

- Jump start wiring

### HYDRAULIC

- Tool Control (two pump, one/two way high-pressure flow)
- Common Quick Coupler Circuit for Cat Pin Grabber and CW Dedicated

For more complete information on Cat products, dealer services, and industry solutions, visit us on the web at [www.cat.com](http://www.cat.com)

© 2018 Caterpillar  
All rights reserved

Materials and specifications are subject to change without notice. Featured machines in photos may include additional equipment. See your Cat dealer for available options.

CAT, CATERPILLAR, LET'S DO THE WORK, their respective logos, "Caterpillar Yellow", the "Power Edge" trade dress as well as corporate and product identity used herein, are trademarks of Caterpillar and may not be used without permission.

AEXJ0076 (10-2018)  
Build Number: 07A  
(North America)

