



336 GC

Hydraulic Excavator

Technical Specifications

Engine

Engine Model	Cat® C7.1 ACERT™	
Net Power – ISO 9249	194 kW	259 hp
Net Power – SAE J1349	194 kW	259 hp
Gross Power – ISO 14396/SAE J1995	195 kW	261 hp
Bore	105 mm	4 in
Stroke	135 mm	5 in
Displacement	7.1 L	433 in ³

- Meets China Nonroad Stage III emission standards, equivalent to U.S. EPA Tier 3 and EU Stage IIIA.
- Recommended for use up to 3300 m (10,830 ft) altitude with engine power derate above 2300 m (7,550 ft).
- Net power advertised is the power available at the flywheel when the engine is equipped with fan, air cleaner, muffler, and alternator.
- Rating at 2,000 rpm.

Engine rpm

Operation	1,900 rpm
Travel	2,000 rpm

Swing Mechanism

Swing Speed	8.74 rpm
Maximum Swing Torque	137 kN·m 101,168 lbf·ft

Weights

Operating Weight	33 800 kg 74,500 lb
------------------	---------------------

- Standard undercarriage, Reach boom, R2.8DB (9'2") stick, HD 1.88 m³ (2.46 yd³) bucket, and 600 mm (24") triple grouser shoes, 6.8 mt (14,991 lb) counterweight.

Track

Standard Track Shoes Width	600 mm	24 in
Number of Shoes (each side)	45	
Number of Track Rollers (each side)	7	
Number of Carrier Rollers (each side)	2	

Drive

Maximum Gradeability	35°/70%	
Maximum Travel Speed	4.7 km/h	3 mph
Maximum Drawbar Pull	297 kN	66,656 lbf

Hydraulic System

Main System – Maximum Flow – Implement	559 L/min (279 × 2 pumps)	148 gal/min (74 × 2 pumps)
Maximum Pressure – Equipment – Implement	35 000 kPa	5,076 psi
Maximum Pressure – Travel	35 000 kPa	5,076 psi
Maximum Pressure – Swing	28 000 kPa	4,061 psi
Boom Cylinder – Bore	145 mm	6 in
Boom Cylinder – Stroke	1440 mm	57 in
Stick Cylinder – Bore	160 mm	6 in
Stick Cylinder – Stroke	1738 mm	68 in
DB Bucket Cylinder – Bore	145 mm	6 in
DB Bucket Cylinder – Stroke	1151 mm	45 in

336 GC Hydraulic Excavator Specifications

Service Refill Capacities

Fuel Tank Capacity	600 L	158.5 gal
Cooling System	19 L	4.9 gal
Engine Oil (with filter)	20 L	5.3 gal
Swing Drive (each)	18 L	4.8 gal
Final Drive (each)	8 L	2.1 gal
Hydraulic System (including tank)	373 L	98.5 gal
Hydraulic Tank	153 L	40.4 gal

Standards

Brakes	ISO 10265:2008
Cab/FOGS	ISO 10262:1998
Cab/ROPS	ISO 12117-2:2008

Sound Performance

ISO 6395:2008 (external)	105 dB(A)
ISO 6396:2008 (inside cab)	70 dB(A)

- Hearing protection may be needed when operating with an open operator station and cab (when not properly maintained or doors/windows open) for extended periods or in a noisy environment.

Operating Weights and Ground Pressures

	600 mm (24") Triple Grouser Shoes	
	Weight kg (lb)	Ground Pressure kPa (psi)
6.8 mt (14,991 lb) Counterweight + Standard Undercarriage Base Machine		
Reach Boom + R3.2 (10'6") Stick + 1.88 m ³ (2.46 yd ³) HD Bucket	33 900 (74,800)	70.1 (10.2)
Reach Boom + R2.8 (9'2") Stick + 1.88 m ³ (2.46 yd ³) HD Bucket	33 800 (74,500)	69.9 (10.1)

All operating weights include a 90% fuel tank with 75 kg (165 lb) operator.

336 GC Hydraulic Excavator Specifications

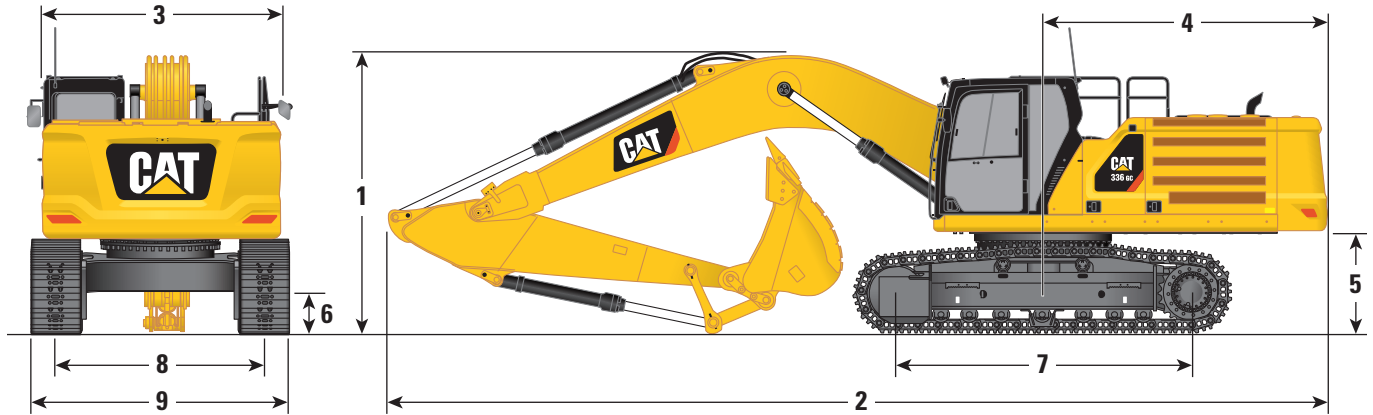
Major Component Weights

	kg	lb
Base machine with 6.8 mt (14,991 lb) counterweight, standard swing frame, base frame with standard track rollers and carrier rollers	23 010	50,730
Track Shoes:		
600 mm (24") Width, 11 mm (0.43") Thick, Triple Grouser Track Shoes	3750	8,270
Two Boom Cylinders	560	1,240
Weight of 90% Fuel Tank and 75 kg (165 lb) Operator	550	1,210
Counterweight:		
6.8 mt Counterweight	6800	14,991
Swing Frame:		
Standard Swing Frame	3160	6,960
Standard Undercarriage:		
Base Frame with Standard Track Rollers and Carrier Rollers for Standard Undercarriage	7870	17,350
Boom (including lines, pins, stick cylinder):		
Reach Boom 6.5 m (21'4")	3140	6,910
Sticks (including lines, pins, bucket cylinder, bucket linkage):		
Reach Stick R2.8DB (9'2")	1650	3,650
Reach Stick R3.2DB (10'6")	1760	3,890
Bucket (without linkage):		
1.88 m ³ (2.46 yd ³) HD	1710	3,770
Quick Couplers:		
CW Dedicated QC	480	1,050
Pin Grabber QC	700	1,550

336 GC Hydraulic Excavator Specifications

Dimensions

All dimensions are approximate and may vary depending on bucket selection.



Boom Option

**Reach Boom
6.5 m (21'4")**

Stick Options

Reach Stick

R3.2DB (10'6")

R2.8DB (9'2")

1 Machine Height:

	R3.2DB (10'6")		R2.8DB (9'2")	
Cab Height	3170 mm	10.4 ft	3170 mm	10.4 ft
FOGS Height	3310 mm	10.9 ft	3310 mm	10.9 ft
Handrails Height	3160 mm	10.4 ft	3160 mm	10.4 ft
With Boom/Stick/Bucket Installed	3470 mm	11.4 ft	3660 mm	12.0 ft
With Boom/Stick Installed	3300 mm	10.8 ft	3430 mm	11.3 ft
With Boom Installed	2880 mm	9.4 ft	2880 mm	9.4 ft
With Boom/Stick/Bucket Installed (with auxiliary lines)	3520 mm	11.5 ft	3680 mm	12.1 ft
With Boom/Stick Installed (with auxiliary lines)	3380 mm	11.1 ft	3480 mm	11.4 ft
With Boom Installed (with auxiliary lines)	2970 mm	9.7 ft	2970 mm	9.7 ft

2 Machine Length:

With Boom/Stick/Bucket Installed	11 170 mm	36.6 ft	11 220 mm	36.8 ft
With Boom/Stick Installed	11 130 mm	36.5 ft	11 180 mm	36.7 ft
With Boom Installed	9960 mm	32.7 ft	9960 mm	32.7 ft
With Boom/Stick/Bucket Installed (with auxiliary lines)	11 170 mm	36.6 ft	11 220 mm	36.8 ft
With Boom/Stick Installed (with auxiliary lines)	11 130 mm	36.5 ft	11 180 mm	36.7 ft
With Boom Installed (with auxiliary lines)	10 010 mm	32.8 ft	10 010 mm	32.8 ft

3 Upperframe Width without Walkways

	3030 mm	9.9 ft	3030 mm	9.9 ft
--	---------	--------	---------	--------

4 Tail Swing Radius

	3530 mm	11.6 ft	3530 mm	11.6 ft
--	---------	---------	---------	---------

5 Counterweight Clearance

	1250 mm	4.1 ft	1250 mm	4.1 ft
--	---------	--------	---------	--------

6 Ground Clearance

	510 mm	1.7 ft	510 mm	1.7 ft
--	--------	--------	--------	--------

7 Track Length – Length to Center of Rollers

	3610 mm	11.8 ft	3610 mm	11.8 ft
--	---------	---------	---------	---------

8 Track Gauge – Extended (standard undercarriage)

	2590 mm	8.5 ft	2590 mm	8.5 ft
--	---------	--------	---------	--------

9 Track Width/Undercarriage Width (with steps/without steps):

600 mm (24") Shoes	3190 mm	10.5 ft	3190 mm	10.5 ft
--------------------	---------	---------	---------	---------

Bucket Type

HD

HD

Bucket Capacity	1.88 m ³	2.46 yd ³	1.88 m ³	2.46 yd ³
-----------------	---------------------	----------------------	---------------------	----------------------

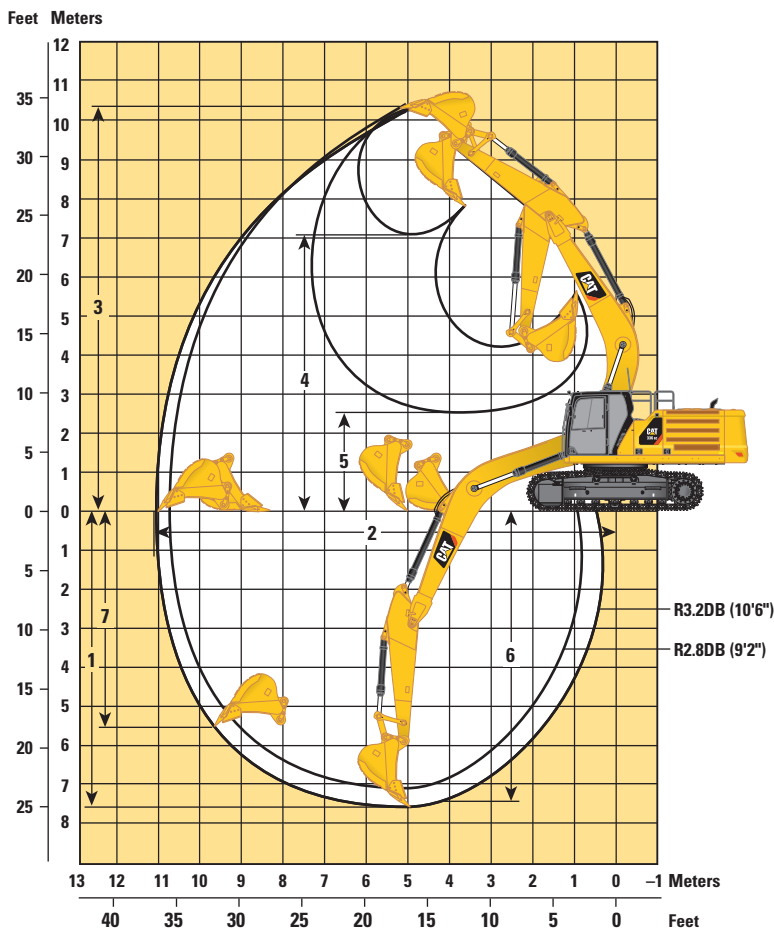
Bucket Tip Radius

	1760 mm	5.8 ft	1760 mm	5.8 ft
--	---------	--------	---------	--------

336 GC Hydraulic Excavator Specifications

Working Ranges and Forces

All dimensions are approximate and may vary depending on bucket selection.



Boom Option

Reach Boom
6.5 m (21'4")

Stick Options

Reach Stick

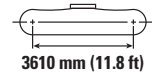
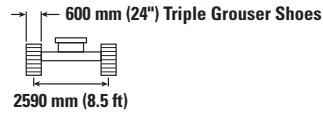
R3.2DB (10'6")

R2.8DB (9'2")

	R3.2DB (10'6")		R2.8DB (9'2")	
1 Maximum Digging Depth	7520 mm	24.7 ft	7120 mm	23.4 ft
2 Maximum Reach at Ground Line	11 050 mm	36.3 ft	10 740 mm	35.2 ft
3 Maximum Cutting Height	10 300 mm	33.8 ft	10 360 mm	34.0 ft
4 Maximum Loading Height	7080 mm	23.2 ft	7080 mm	23.2 ft
5 Minimum Loading Height	2580 mm	8.5 ft	2980 mm	9.8 ft
6 Maximum Depth Cut for 2240 mm (8 ft) Level Bottom	7360 mm	24.1 ft	6950 mm	22.8 ft
7 Maximum Vertical Wall Digging Depth	5660 mm	18.6 ft	5620 mm	18.4 ft
Bucket Digging Force (SAE)	172 kN	38,730 lbf	172 kN	38,730 lbf
Bucket Digging Force (ISO)	197 kN	44,350 lbf	197 kN	44,350 lbf
Stick Digging Force (SAE)	143 kN	32,060 lbf	158 kN	35,540 lbf
Stick Digging Force (ISO)	148 kN	33,160 lbf	164 kN	36,890 lbf
Bucket Type	HD		HD	
Bucket Capacity	1.88 m ³	2.46 yd ³	1.88 m ³	2.46 yd ³
Bucket Tip Radius	1760 mm	5.8 ft	1760 mm	5.8 ft

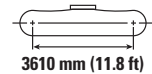
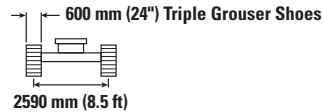
336 GC Hydraulic Excavator Specifications

Reach Boom Lift Capacities – Counterweight: 6.8 mt (14,991 lb) – without Bucket



		3000 mm/120 in		4500 mm/180 in		6000 mm/240 in		7500 mm/300 in		9000 mm/360 in		mm in		
7500 mm 300 in	kg lb							*6850	*6850			*5750 *12,700	*5750 *12,700	7700 300
6000 mm 240 in	kg lb							*7500 *16,350	7100 15,250			*5550 *12,250	*5550 *12,250	8580 340
4500 mm 180 in	kg lb			*11 450	*11 450	*9200 *19,850	*9200 *19,850	*8050 *17,450	6900 14,800	*6600	5150	*5600 *12,350	5050 11,100	9130 360
3000 mm 120 in	kg lb			*14 450 *31,050	13 850 29,850	*10 600 *22,950	9150 19,700	*8750 *19,050	6600 14,250	6800 14,600	5050 10,800	*5850 *12,800	4700 10,350	9410 370
1500 mm 60 in	kg lb			*16 650 *35,900	12 950 27,950	*11 900 *25,700	8700 18,700	8700 18,700	6350 13,700	6650 14,350	4900 10,550	6200 13,700	4550 10,050	9440 380
0 mm 0 in	kg lb			*17 350 *37,600	12 600 27,100	11 750 25,250	8400 18,050	8500 18,300	6200 13,300	6550 14,150	4800 10,350	6350 13,950	4650 10,250	9220 370
-1500 mm -60 in	kg lb	*11 700 *26,500	*11 700 *26,500	*17 000 *36,850	12 500 26,900	11 600 24,950	8250 17,750	8400 18,100	6100 13,100			6800 15,000	5000 10,950	8750 350
-3000 mm -120 in	kg lb	*18 500 *41,900	*18 500 *41,900	*15 750 *34,150	12 650 27,150	11 650 25,000	8300 17,850	8450 18,200	6150 13,250			7800 17,300	5700 12,600	7960 320
-4500 mm -180 in	kg lb	*17 700 *38,150	*17 700 *38,150	*13 350 *28,650	12 900 27,800	*10 100 *21,500	8500 18,300					*8500 *18,700	7300 16,250	6750 270

Reach Boom Lift Capacities – Counterweight: 6.8 mt (14,991 lb) – without Bucket



		3000 mm/120 in		4500 mm/180 in		6000 mm/240 in		7500 mm/300 in		9000 mm/360 in		mm in		
7500 mm 300 in	kg lb											*7300 *16,150	*7300 *16,150	7340 290
6000 mm 240 in	kg lb					*8550 *18,550	*8550 *18,550	*7950 *17,400	7050 15,150			*7000 *15,450	6000 13,350	8250 330
4500 mm 180 in	kg lb			*12 350 *26,450	*12 350 *26,450	*9700 *21,000	9600 20,700	*8400 *18,350	6850 14,750			*7000 *15,450	5300 11,700	8820 350
3000 mm 120 in	kg lb			*15 350 *32,900	13 600 29,400	*11 100 *23,950	9100 19,600	8950 19,250	6600 14,250	6800	5050	6700 14,700	4950 10,900	9110 360
1500 mm 60 in	kg lb			*14 100 *34,300	12 900 27,750	12 050 25,900	8650 18,700	8700 18,750	6400 13,750	6700	4950	6550 14,400	4850 10,600	9140 360
0 mm 0 in	kg lb			*16 550 *37,800	12 650 27,200	11 750 25,300	8400 18,100	8550 18,350	6200 13,400			6700 14,800	4950 10,850	8920 350
-1500 mm -60 in	kg lb	*10 950 *24,900	*10 950 *24,900	*16 800 *36,450	12 650 27,150	11 650 25,100	8350 17,950	8500 18,250	6150 13,300			7250 16,000	5300 11,700	8420 340
-3000 mm -120 in	kg lb	*19 750 *43,650	*19 750 *43,650	*15 300 *33,100	12 800 27,500	*11 750 25,300	8400 18,100	8600	6250			8450 18,700	6150 13,650	7600 300
-4500 mm -180 in	kg lb	*16 000 *34,450	*16 000 *34,450	*12 450 *26,650	*12 450 *26,650	*9250 *19,400	8700 18,750					*8450 *18,550	8100 18,200	6330 250



ISO 10567



* Indicates that the load is limited by hydraulic lifting capacity rather than tipping load. The above loads are in compliance with hydraulic excavator lift capacity standard ISO 10567:2007. They do not exceed 87% of hydraulic lifting capacity or 75% of tipping load. Weight of all lifting accessories must be deducted from the above lifting capacities. Lifting capacities are based on the machine standing on a firm, uniform supporting surface. The use of a work tool attachment point to handle/lift objects, could affect the machine lift performance.

Lift capacity stays with ±5% for all available track shoes.

Always refer to the appropriate Operation and Maintenance Manual for specific product information.

336 GC Hydraulic Excavator Specifications

Bucket Specifications and Compatibility

	Linkage	Width		Capacity		Weight		Fill %	6.8 mt (14,991 lb) Counterweight	
		mm	in	m ³	yd ³	kg	lb		Reach Boom (GC)	
									R2.8 (9'2") (GC)	R3.2 (10'6") (GC)
Pin-On (No Quick Coupler)										
Heavy Duty	DB	1400	55	1.64	2.14	1460	3,219	100	●	⊙
	DB	1550	61	1.88	2.46	1553	3,424	100	⊙	⊖
	DB	1700	67	2.12	2.77	1647	3,631	100	⊖	⊖
Severe Duty	DB	1400	56	1.64	2.14	1643	3,622	90	●	●
	DB	1550	62	1.88	2.46	1787	3,940	90	⊙	⊙
Extreme Duty	DB	1400	56	1.64	2.14	1877	4,137	90	●	⊙
Maximum load with pin-on (payload + bucket)								kg	4980	4685
								lb	10,979	10,329
With Cat Pin Grabber Coupler										
Heavy Duty	DB	1400	55	1.64	2.14	1460	3,219	100	⊙	⊖
	DB	1550	61	1.88	2.46	1553	3,424	100	⊖	○
	DB	1700	67	2.12	2.77	1647	3,631	100	○	◇
Severe Duty	DB	1400	56	1.64	2.14	1643	3,622	90	⊙	⊖
	DB	1550	62	1.88	2.46	1787	3,940	90	⊖	○
Extreme Duty	DB	1400	56	1.64	2.14	1877	4,137	90	⊖	⊖
Maximum load with coupler (payload + bucket)								kg	4285	3989
								lb	9,447	8,795

The above loads are in compliance with hydraulic excavator standard EN474-5:2006 + A3:2013, they do not exceed 87% of hydraulic lifting capacity or 75% of tipping capacity with front linkage fully extended at ground line with bucket curled.

Capacity based on ISO 7451:2007.

Bucket weight with General Duty tips.

Maximum Material Density:

- 2100 kg/m³ (3,500 lb/yd³)
- ⊙ 1800 kg/m³ (3,000 lb/yd³)
- ⊖ 1500 kg/m³ (2,500 lb/yd³)
- 1200 kg/m³ (2,000 lb/yd³)
- ◇ 900 kg/m³ (1,500 lb/yd³)

Caterpillar recommends using appropriate work tools to maximize the value customers receive from our products. Use of work tools, including buckets, which are outside of Caterpillar's recommendations or specifications for weight, dimensions, flows, pressures, etc. may result in less-than-optimal performance, including but not limited to reductions in production, stability, reliability, and component durability. Improper use of a work tool resulting in sweeping, prying, twisting and/or catching of heavy loads will reduce the life of the boom and stick.

336 GC Hydraulic Excavator Specifications

Attachments Offering Guide

Not all Attachments are available in all regions. Consult your Cat dealer for specific Attachments available in your region.

PIN-ON ATTACHMENTS

Boom Type	Stick Size	Reach Boom	
		R2.8 (9'2")	R3.2 (10'6")
Hydraulic Hammers	H140Es	✓	✓
	H160Es	✓	✓
	B35	✓	✓
Multi-Processors	MP324 CC Jaw	✓	✓
	MP324 D Jaw	✓	✓
	MP324 P Jaw	✓	✓
	MP324 S Jaw	✓	✓
	MP324 TS Jaw	✓	✓
	MP324 U Jaw	✓	✓
	MP332 CC Jaw	✓	✓
	MP332 D Jaw	✓	✓
	MP332 P Jaw	✓	✓
	MP332 S Jaw	✓	✓
Crushers	P325	✓	✓
	P335	✓	✓
Pulverizers	P225	✓	✓
	P235	✓	✓
Demolition and Sorting Grapples	G325B	✓	✓
	G330	✓	✓
Mobile Scrap and Demolition Shears	S325B	✓	✓
Compactors (Vibratory Plate)	CVP110	✓	✓
Orange Peel Grapples		✓	✓
Trash Grapple		✓	✓
Thumbs		✓	✓
Rakes		✓	✓
Cat Pin Grabber Couplers		✓	✓
Dedicated Quick Couplers		✓	✓

*Over the front only.

CAT PIN GRABBER COUPLER ATTACHMENTS

Boom Type	Stick Size	Reach Boom	
		R2.8 (9'2")	R3.2 (10'6")
Hydraulic Hammers	H140Es	✓	✓
	H160Es	✓	✓
	B35	✓	✓
Multi-Processors	MP324 CC Jaw	✓	✓
	MP324 D Jaw	✓	✓
	MP324 P Jaw	✓	✓
	MP324 S Jaw	✓	✓
	MP324 TS Jaw	✓	✓
	MP324 U Jaw	✓	✓
	MP332 CC Jaw	✓	✓*
	MP332 D Jaw	✓*	
Crushers	P325	✓	✓
	P225	✓	✓
	G325B	✓	✓
	G330	✓*	
Mobile Scrap and Demolition Shears	S325B	✓	✓
Compactors (Vibratory Plate)	CVP110	✓	✓
Thumbs		✓	✓
Rakes		✓	✓

(continued on next page)

336 GC Hydraulic Excavator Specifications

Attachments Offering Guide (continued)

Not all Attachments are available in all regions. Consult your Cat dealer for specific Attachments available in your region.

CW-45 ATTACHMENTS

Boom Type		Reach Boom	
		R2.8 (9'2")	R3.2 (10'6")
Hydraulic Hammers	H140Es	✓	✓
	H160Es	✓	✓
	B35	✓	✓
Multi-Processors	MP324 CC Jaw	✓	✓
	MP324 D Jaw	✓	✓
	MP324 P Jaw	✓	✓
	MP324 S Jaw	✓	✓
	MP324 TS Jaw	✓	✓
	MP324 U Jaw	✓	✓
	MP332 CC Jaw	✓	✓*
	MP332 D Jaw	✓	✓*
	MP332 P Jaw	✓	✓*
	MP332 S Jaw	✓	✓
Crushers	P325	✓	✓
	P335	✓*	
Pulverizers	P225	✓	✓
	P235	✓*	
Demolition and Sorting Grapples	G325B	✓	✓
	G330	✓*	
Mobile Scrap and Demolition Shears	S325B	✓	✓
Compactors (Vibratory Plate)	CVP110	✓	✓

CW-45S ATTACHMENTS

Boom Type		Reach Boom	
		R2.8 (9'2")	R3.2 (10'6")
Hydraulic Hammers	H140Es	✓	✓
	H160Es	✓	✓
	B35	✓	✓
Multi-Processors	MP324 CC Jaw	✓	✓
	MP324 D Jaw	✓	✓
	MP324 P Jaw	✓	✓
	MP324 S Jaw	✓	✓
	MP324 TS Jaw	✓	✓
	MP324 U Jaw	✓	✓
	MP332 CC Jaw	✓	✓
	MP332 D Jaw	✓	✓
	MP332 P Jaw	✓	✓
	MP332 S Jaw	✓	✓
Crushers	P325	✓	✓
	P335	✓	✓
	P225	✓	✓
Pulverizers	P235	✓	✓
	P235	✓	✓
Demolition and Sorting Grapples	G325B	✓	✓
	G330	✓	✓
Mobile Scrap and Demolition Shears	S325B	✓	✓
Compactors (Vibratory Plate)	CVP110	✓	✓

BOOM-MOUNTED ATTACHMENTS

Boom Type	Reach Boom
Mobile Scrap and Demolition Shears	S2090 ✓*
	S3050 ✓
	S3070 ✓*

*Over the front only.

336 GC Standard and Optional Equipment

Standard and Optional Equipment

Standard and optional equipment may vary. Consult your Cat dealer for details.

	Standard	Optional		Standard	Optional
ENGINE			HYDRAULIC SYSTEM		
Cat C7.1 ACERT diesel engine	✓		Boom and stick regeneration circuit	✓	
Two selectable modes: Power, Smart	✓		Electronic main control valve	✓	
One-touch low idle with automatic engine speed control	✓		Automatic hydraulic oil warm up	✓	
52° C (126° F) high-ambient cooling capacity	✓		Bio hydraulic oil capability	✓	
-18° C (0° F) cold start capability	✓		Single one-way auxiliary circuit		✓
-32° C (-25° F) cold start capability		✓	Combined two-way auxiliary circuit		✓
Double element air filter with integrated precleaner	✓		Combined two-way auxiliary circuit with hammer return filter		✓
Dual stage four micron main filter and 10 micron primary filter with water separator and water separator indicator switch	✓		Medium-pressure auxiliary circuit		✓
Biodiesel capability up to B20	✓		Quick coupler circuit for Cat Pin Grabber		✓
			UNDERCARRIAGE AND STRUCTURES		
			Towing eye on base frame	✓	
			Track guiding guard, full length		✓
			Track guiding guard, center		✓
			Bottom guard		✓
			Travel motor guard		✓
			Bucket cylinder guard		✓
			Grease lubricated track	✓	
			Swing frame	✓	
			Swing bearing	✓	
			Base frame with standard rollers	✓	

(continued on next page)

336 GC Standard and Optional Equipment

Standard and Optional Equipment *(continued)*

Standard and optional equipment may vary. Consult your Cat dealer for details.

	Standard	Optional		Standard	Optional
BOOMS, STICKS AND LINKAGES			SERVICE AND MAINTENANCE		
6.8 mt (14,991 lb) counterweight	✓		Grouped location of engine oil and fuel filters	✓	
600 mm (24") triple grouser track shoes	✓		Scheduled Oil Sampling (S-O-S SM) ports	✓	
6.5 m (21'4") Reach boom	✓		Electric refueling pump with automatic shutoff		✓
2.8 m (9'2") stick		✓	SAFETY AND SECURITY		
3.2 m (10'6") stick		✓	Caterpillar One Key security system	✓	
Bucket Linkage, DB family without lifting eye		✓	Lockable external tool/storage box	✓	
ELECTRICAL SYSTEM			Lockable door, fuel, and hydraulic tank locks	✓	
Maintenance-free 1,000 CCA batteries (×2)	✓		Lockable fuel drain compartment	✓	
Centralized electrical disconnect switch	✓		Service platform with anti-skid plate and recessed bolts	✓	
LED chassis light, LH and RH boom lights, cab lights	✓		RH handrail and hand hold (ISO 2867:2011 compliant)	✓	
CAT CONNECT TECHNOLOGY			Signaling/warning horn	✓	
Cat Product Link™	✓		Ground-level secondary engine shutoff switch	✓	
			Rearview camera, right-hand-side mirror	✓	

336 GC Attachments

Dealer Installed Kit and Attachments

Attachments may vary. Consult your Cat dealer for details.

CAB

- Radial lower wiper
- LH/RH electrical pedal for tool control
- Rain protector plus cab light cover

SAFETY AND SECURITY

- Bluetooth® receiver kit
- Bluetooth key fob

GUARDS

- Standard swivel guard
- Falling object guard system (not compatible with cab light cover, rain protector)
- Mesh guard full front (not compatible with cab light cover, rain protector)
- Mesh guard lower half front
- Full protecting vandalism guard

336 GC Cab Options

Cab Options

	Comfort
ROPS, standard sound suppression	●
Polycarbonate roof hatch	○
High-resolution 203 mm (8") LCD touchscreen monitor	●
Automatic bi-level air conditioner	●
Jog dial and shortcut keys for monitor control	●
Keyless push-to-start engine control	●
Height-adjustable console, three steps with tool	●
Mechanically adjustable seat suspension	●
51 mm (2") seat belt	●
Fixed left-side console	●
Bluetooth integrated radio with USB ports	●
12V DC outlets (×2)	●
Document storage	●
Cup and bottle holders	●
Openable two-piece front window	●
Upper radial wiper with 70/30 with washer	●
Openable steel hatch	●
LED dome and lower interior lights	●
Roller front sunscreen	●
Beacon ready	●
Washable floor mat	●

● Standard

○ Optional

For more complete information on Cat products, dealer services, and industry solutions, visit us on the web at www.cat.com

© 2018 Caterpillar
All rights reserved

Materials and specifications are subject to change without notice. Featured machines in photos may include additional equipment. See your Cat dealer for available options.

CAT, CATERPILLAR, SAFETY.CAT.COM, their respective logos, "Caterpillar Yellow" and the "Power Edge" trade dress, as well as corporate and product identity used herein, are trademarks of Caterpillar and may not be used without permission.

AEXQ2361 (05-2018)
Build Number: 07A
(China)

