



336

Hydraulic Excavator

Technical Specifications

Configurations and features may vary by region. Please consult your Cat® dealer for availability in your area.

Table of Contents

Specifications	2
Engine	2
Swing Mechanism	2
Weights	2
Track	2
Drive	2
Hydraulic System	2
Service Refill Capacities	2
Standards	2
Sound Performance	2
Operating Weights and Ground Pressures	3
Major Component Weights	4
Dimensions	5
Working Ranges and Forces	6
Bucket Specifications and Compatibility	7
Attachments Offering Guide	8
Standard and Optional Equipment	9
Dealer Installed Kit and Attachments	11
Cab Options	12

336 Hydraulic Excavator Specifications

Engine

Engine Model	Cat® C9.3B	
Net Power – ISO 9249	232 kW	311 hp
Engine Power – ISO 14396	234 kW	314 hp
Bore	115 mm	5 in
Stroke	149 mm	6 in
Displacement	9.3 L	568 in ³

- Meets Japan 2014 (Tier 4 Final) emission standards.
- Recommended for use up to 3300 m (10,830 ft) altitude with engine power derate above 2300 m (7,550 ft).
- Net power is tested per ISO 9249. Standards in effect at the time of manufacture.
- Net power advertised is the power available at the flywheel when the engine is equipped with fan, air intake system, exhaust system and alternator.
- Rated speed at 1,800 rpm.

Swing Mechanism

Swing Speed	8.75 rpm	
Maximum Swing Torque	144 kN·m	106,228 lbf·ft

Weights

Operating Weight	35 900 kg	79,100 lb
------------------	-----------	-----------

- Long undercarriage, Reach boom, R3.2DB (10'6") stick, GDX 1.50 m³ (1.96 yd³) bucket, 700 mm (28") triple grouser shoes, 6.8 t (14,991 lb) counterweight.

Track

Standard Track Shoes Width	700 mm	28"
Optional Track Shoes Width	600 mm	24"
Optional Track Shoes Width	800 mm	31"
Number of Shoes (each side)	49	
Number of Track Rollers (each side)	8	
Number of Carrier Rollers (each side)	2	

Drive

Gradeability	35°/70%	
Maximum Travel Speed	4.7 km/h	2.9 mph
Maximum Drawbar Pull	295 kN	66,206 lbf

Hydraulic System

Main System – Maximum Flow – Implement	558 L/min (279 × 2 pumps)	147 gal/min (74 × 2 pumps)
Maximum Pressure – Equipment – Implement	35 000 kPa	5,076 psi
Maximum Pressure – Travel	35 000 kPa	5,076 psi
Maximum Pressure – Swing	29 400 kPa	4,264 psi
Boom Cylinder – Bore	150 mm	6 in
Boom Cylinder – Stroke	1440 mm	57 in
Stick Cylinder – Bore	170 mm	7 in
Stick Cylinder – Stroke	1738 mm	68 in
DB Bucket Cylinder – Bore	150 mm	6 in
DB Bucket Cylinder – Stroke	1151 mm	45 in
TB Bucket Cylinder – Bore	160 mm	6 in
TB Bucket Cylinder – Stroke	1356 mm	53 in

Service Refill Capacities

Fuel Tank Capacity	600 L	158.5 gal
Cooling System	40 L	10.5 gal
Engine Oil (with filter)	32 L	8.5 gal
Swing Drive (each)	18 L	4.8 gal
Final Drive (each)	8 L	2.1 gal
Hydraulic System (including tank)	373 L	98.5 gal
Hydraulic Tank (including suction pipe)	161 L	42.5 gal
DEF Tank	80 L	21.1 gal

Standards

Brakes	ISO 10265:2008
Cab/ROPS	ISO 12117-2:2008

Sound Performance

ISO 6395 (external)	105 dB(A)
ISO 6396 (inside cab)	73 dB(A)

- Hearing protection may be needed when operating with an open operator station and cab (when not properly maintained or doors/windows open) for extended periods or in a noisy environment.

336 Hydraulic Excavator Specifications

Operating Weights and Ground Pressures

	600 mm (24") Double Grouser Shoes		700 mm (28") Triple Grouser Shoes		800 mm (31") Triple Grouser Shoes		800 mm (31") Triple Grouser HD Shoes	
	Weight	Ground Pressure	Weight	Ground Pressure	Weight	Ground Pressure	Weight	Ground Pressure
	kg (lb)	kPa (psi)	kg (lb)	kPa (psi)	kg (lb)	kPa (psi)	kg (lb)	kPa (psi)
Base Frame with HD Track Rollers and Carrier Rollers								
6.8 t (14,991 lb) Counterweight								
Reach Boom + R3.9 (12'10") Stick + 1.40 m ³ (1.83 yd ³) GD ^X Bucket	36 400 (80,200)	67.8 (9.8)	36 000 (79,300)	57.4 (8.3)	36 600 (80,800)	51.2 (7.4)	37 200 (82,100)	52.0 (7.5)
Reach Boom + R3.2 (10'6") Stick + 1.50 m ³ (1.96 yd ³) GD ^X Bucket	36 300 (80,000)	67.6 (9.8)	35 900 (79,100)	57.3 (8.3)	36 500 (80,500)	51.0 (7.4)	37 100 (81,800)	51.8 (7.5)
Reach Boom + R2.8 (9'2") Stick + 1.60 m ³ (2.09 yd ³) GD ^X Bucket	36 200 (79,900)	67.5 (9.8)	35 800 (79,000)	57.2 (8.3)	36 500 (80,400)	51.0 (7.4)	37 100 (81,800)	51.8 (7.5)
Mass Boom + M2.55 (8'4") Stick + 1.90 m ³ (2.48 yd ³) GD ^X Bucket	37 500 (82,700)	69.9 (10.1)	37 100 (81,800)	59.3 (8.6)	37 800 (83,300)	52.8 (7.7)	38 400 (84,600)	53.6 (7.8)
7.56 t (16,667 lb) Counterweight								
Reach Boom + R3.9 (12'10") Stick + 1.40 m ³ (1.83 yd ³) GD ^X Bucket	37 200 (82,100)	69.4 (10.1)	36 800 (81,200)	58.8 (8.5)	37 500 (82,600)	52.4 (7.6)	38 100 (84,000)	53.2 (7.7)
Reach Boom + R3.2 (10'6") Stick + 1.50 m ³ (1.96 yd ³) GD ^X Bucket	37 100 (81,800)	69.2 (10.0)	36 700 (81,000)	58.6 (8.5)	37 400 (82,400)	52.2 (7.6)	38 000 (83,700)	53.0 (7.7)
Reach Boom + R2.8 (9'2") Stick + 1.60 m ³ (2.09 yd ³) GD ^X Bucket	37 100 (81,800)	69.1 (10.0)	36 700 (80,900)	58.6 (8.5)	37 300 (82,300)	52.2 (7.6)	37 900 (83,700)	53.0 (7.7)
Mass Boom + M2.55 (8'4") Stick + 1.90 m ³ (2.48 yd ³) GD ^X Bucket	38 400 (84,600)	71.5 (10.4)	38 000 (83,700)	60.6 (8.8)	38 600 (85,200)	54.0 (7.8)	39 200 (86,500)	54.8 (7.9)
HD Reach Boom + HD R3.2 (10'6") Stick + 1.40 m ³ (1.83 yd ³) HD ^X Bucket	37 800 (83,300)	70.4 (10.2)	37 400 (82,400)	59.7 (8.7)	38 000 (83,900)	53.1 (7.7)	38 600 (85,200)	54.0 (7.8)
Base Frame with DF Track Rollers and Carrier Rollers								
6.8 t (14,991 lb) Counterweight								
Reach Boom + R3.9 (12'10") Stick + 1.40 m ³ (1.83 yd ³) GD ^X Bucket	36 500 (80,500)	68.0 (9.9)	36 100 (79,600)	57.7 (8.4)	36 800 (81,000)	51.4 (7.4)	37 400 (82,400)	52.2 (7.6)
Reach Boom + R3.2 (10'6") Stick + 1.50 m ³ (1.96 yd ³) GD ^X Bucket	36 400 (80,200)	67.8 (9.8)	36 000 (79,300)	57.5 (8.3)	36 600 (80,800)	51.2 (7.4)	37 200 (82,100)	52.0 (7.5)
Reach Boom + R2.8 (9'2") Stick + 1.60 m ³ (2.09 yd ³) GD ^X Bucket	36 400 (80,200)	67.8 (9.8)	36 000 (79,300)	57.4 (8.3)	36 600 (80,700)	51.2 (7.4)	37 200 (82,100)	52.0 (7.5)
Mass Boom + M2.55 (8'4") Stick + 1.90 m ³ (2.48 yd ³) GD ^X Bucket	37 700 (83,000)	70.1 (10.2)	37 300 (82,100)	59.5 (8.6)	37 900 (83,600)	52.9 (7.7)	38 500 (84,900)	53.8 (7.8)
7.56 t (16,667 lb) Counterweight								
Reach Boom + R3.9 (12'10") Stick + 1.40 m ³ (1.83 yd ³) GD ^X Bucket	37 400 (82,400)	69.6 (10.1)	37 000 (81,500)	59.0 (8.6)	37 600 (82,900)	52.6 (7.6)	38 200 (84,300)	53.4 (7.7)
Reach Boom + R3.2 (10'6") Stick + 1.50 m ³ (1.96 yd ³) GD ^X Bucket	37 300 (82,100)	69.4 (10.1)	36 900 (81,200)	58.8 (8.5)	37 500 (82,700)	52.4 (7.6)	38 100 (84,000)	53.2 (7.7)
Reach Boom + R2.8 (9'2") Stick + 1.60 m ³ (2.09 yd ³) GD ^X Bucket	37 200 (82,100)	69.4 (10.1)	36 800 (81,200)	58.8 (8.5)	37 500 (82,600)	52.4 (7.6)	38 100 (83,900)	53.2 (7.7)
Mass Boom + M2.55 (8'4") Stick + 1.90 m ³ (2.48 yd ³) GD ^X Bucket	38 500 (84,900)	71.7 (10.4)	38 100 (84,000)	60.8 (8.8)	38 800 (85,500)	54.1 (7.9)	39 400 (86,800)	55.0 (8.0)
HD Reach Boom + HD R3.2 (10'6") Stick + 1.40 m ³ (1.83 yd ³) HD ^X Bucket	37 900 (83,600)	70.6 (10.2)	37 500 (82,700)	59.9 (8.7)	38 200 (84,100)	53.3 (7.7)	38 800 (85,500)	54.2 (7.9)

All operating weights include a 90% fuel tank with 75 kg (165 lb) operator.

336 Hydraulic Excavator Specifications

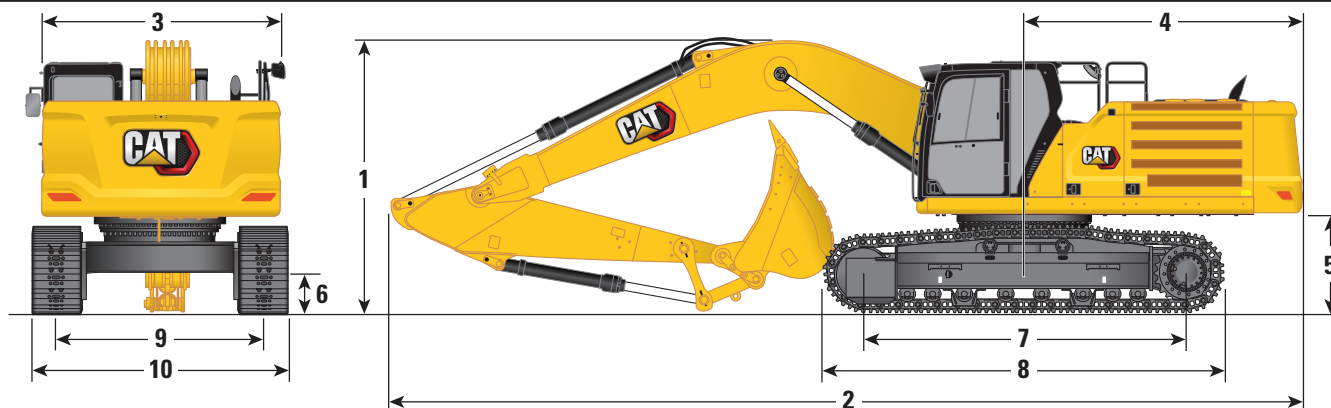
Major Component Weights

	kg	lb
Base machine with 6.8 t (14,991 lb) counterweight, standard swing frame, base frame with HD track rollers and carrier rollers	24 530	54,090
Base machine with 6.8 t (14,991 lb) counterweight, standard swing frame, base frame with DF track rollers and carrier rollers	24 660	54,370
Base machine with 7.56 t (16,667 lb) counterweight, HD swing frame, base frame with HD track rollers and carrier rollers	25 390	55,980
Base machine with 7.56 t (16,667 lb) counterweight, HD swing frame, base frame with DF track rollers and carrier rollers	25 520	56,270
Track Shoes:		
600 mm (24") Width, 15.5 mm (0.61") Thick, Double Grouser Track Shoes	4850	10,700
700 mm (28") Width, 11 mm (0.43") Thick, Triple Grouser Track Shoes	4450	9,800
800 mm (31") Width, 13 mm (0.51") Thick, Triple Grouser Track Shoes	5100	11,230
800 mm (31") Width, 15.5 mm (0.61") Thick, HD Triple Grouser Track Shoes	5690	12,550
Two Boom Cylinders	670	1,470
Weight of 90% Fuel Tank and 75 kg (165 lb) Operator	550	1,210
Counterweights:		
6.8 t (14,991 lb) Counterweight	6800	14,990
7.56 t (16,667 lb) Counterweight	7560	16,670
Swing Frames:		
Standard Swing Frame	3160	6,960
HD Swing Frame	3260	7,180
Long Undercarriage:		
Base Frame with HD Track Rollers and Carrier Rollers	8400	18,520
Base Frame with DF Track Rollers and Carrier Rollers	8530	18,810
Booms (including lines, pins, stick cylinder):		
Reach Boom 6.5 m (21'4")	3220	7,100
Mass Boom 6.18 m (20'3")	3480	7,670
HD Reach Boom 6.5 m (21'4")	3480	7,670
Sticks (including lines, pins, bucket cylinder, bucket linkage):		
Reach Stick R2.8DB (9'2")	1710	3,780
Reach Stick R3.2DB (10'6")	1800	3,960
Reach Stick R3.9DB (12'10")	1950	4,310
Mass Stick M2.55TB (8'4")	2130	4,700
HD Reach Stick R3.2DB (10'6")	1930	4,250
Buckets (without linkage):		
1.40 m ³ (1.83 yd ³) GD _X	1280	2,820
1.50 m ³ (1.96 yd ³) GD _X	1310	2,900
1.60 m ³ (2.09 yd ³) GD _X	1380	3,040
1.90 m ³ (2.48 yd ³) GD _X	1980	4,370
1.40 m ³ (1.83 yd ³) HD _X	1590	3,510
1.50 m ³ (1.96 yd ³) HD _X	1640	3,620
Quick Coupler:		
Pin Grabber QC	700	1,550

336 Hydraulic Excavator Specifications

Dimensions

All dimensions are approximate and may vary depending on bucket selection.

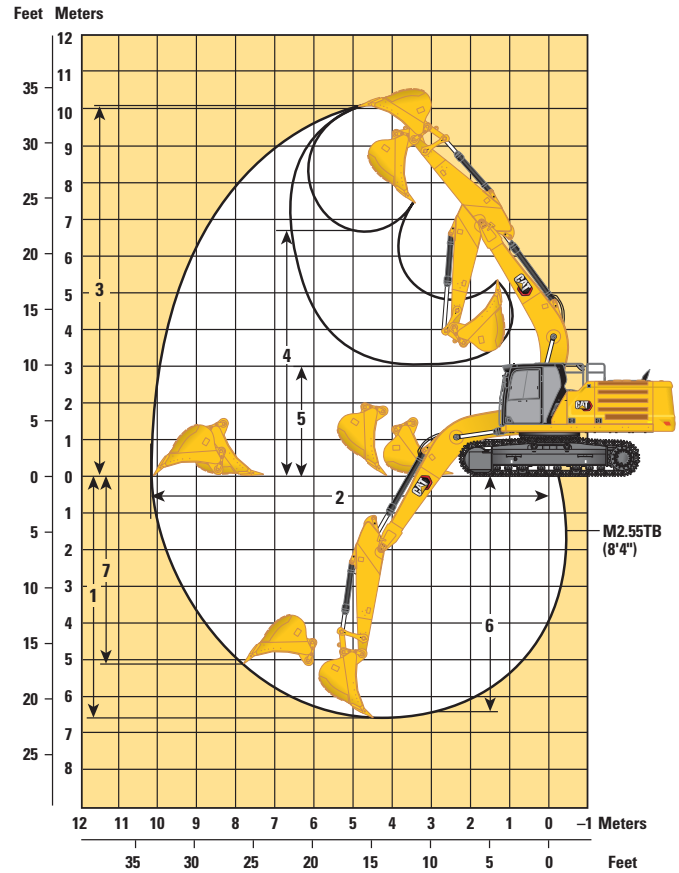
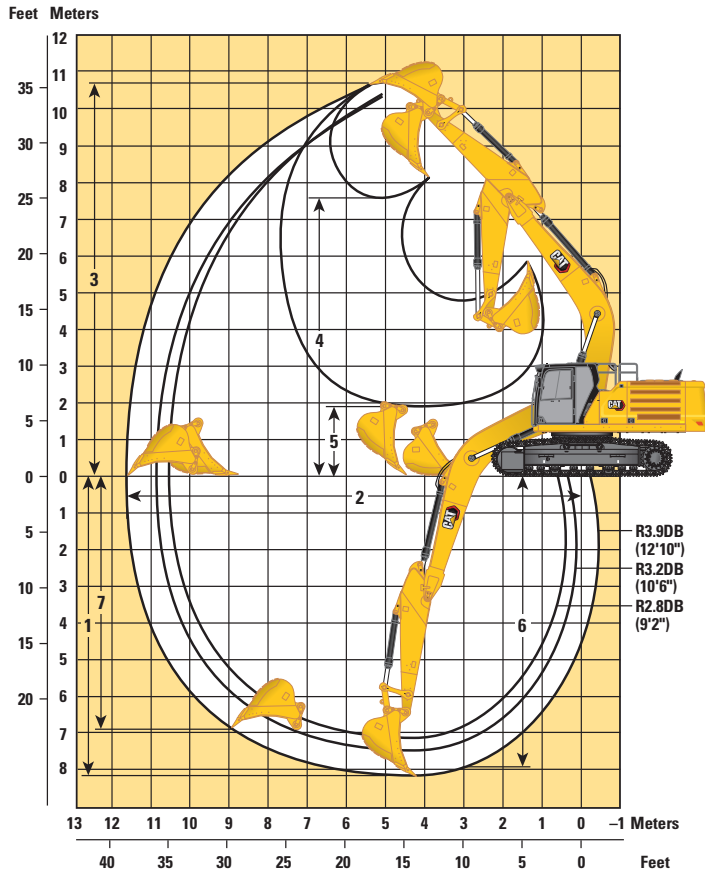


Boom Options	Reach Boom 6.5 m (21'4")				Mass Boom 6.18 m (20'3")				
	Stick Options								
	R3.9DB (12'10")		R3.2DB (10'6")		R2.8DB (9'2")		Mass Stick M2.55TB (8'4")		
1 Machine Height:									
Cab Height	3170 mm	10'4"	3170 mm	10'4"	3170 mm	10'4"	3170 mm	10'4"	
FOGS Height	3310 mm	10'10"	3310 mm	10'10"	3310 mm	10'10"	3310 mm	10'10"	
Handrails Height	3160 mm	10'4"	3160 mm	10'4"	3160 mm	10'4"	3160 mm	10'4"	
With Boom/Stick/Bucket Installed	3670 mm	12'0"	3360 mm	11'0"	3580 mm	11'8"	3590 mm	11'9"	
With Boom/Stick Installed	3510 mm	11'6"	3300 mm	10'9"	3430 mm	11'3"	3340 mm	10'11"	
With Boom Installed	2880 mm	9'5"	2880 mm	9'5"	2880 mm	9'5"	2830 mm	9'3"	
With Boom/Stick/Bucket Installed (with auxiliary lines)	3720 mm	12'2"	3420 mm	11'2"	3600 mm	11'9"	3600 mm	11'9"	
With Boom/Stick Installed (with auxiliary lines)	3570 mm	11'8"	3380 mm	11'1"	3480 mm	11'5"	3350 mm	10'11"	
With Boom Installed (with auxiliary lines)	2970 mm	9'8"	2970 mm	9'8"	2970 mm	9'8"	2900 mm	9'6"	
2 Machine Length:									
With Boom/Stick/Bucket Installed	11 200 mm	36'8"	11 150 mm	36'6"	11 210 mm	36'9"	10 890 mm	35'8"	
With Boom/Stick Installed	11 180 mm	36'8"	11 130 mm	36'6"	11 180 mm	36'8"	10 830 mm	35'6"	
With Boom Installed	9960 mm	32'8"	9960 mm	32'8"	9960 mm	32'8"	9640 mm	31'7"	
With Boom/Stick/Bucket Installed (with auxiliary lines)	11 200 mm	36'8"	11 150 mm	36'6"	11 210 mm	36'9"	10 890 mm	35'8"	
With Boom/Stick Installed (with auxiliary lines)	11 180 mm	36'8"	11 130 mm	36'6"	11 180 mm	36'8"	10 830 mm	35'6"	
With Boom Installed (with auxiliary lines)	10 010 mm	32'10"	10 010 mm	32'10"	10 010 mm	32'10"	9640 mm	31'7"	
3 Upperframe Width without Walkways	2970 mm	9'9"	2970 mm	9'9"	2970 mm	9'9"	2970 mm	9'9"	
4 Tail Swing Radius	3530 mm	11'6"	3530 mm	11'6"	3530 mm	11'6"	3530 mm	11'6"	
5 Counterweight Clearance	1250 mm	4'1"	1250 mm	4'1"	1250 mm	4'1"	1250 mm	4'1"	
6 Ground Clearance	510 mm	1'8"	510 mm	1'8"	510 mm	1'8"	510 mm	1'8"	
7 Track Length – Length to Center of Rollers	4040 mm	13'3"	4040 mm	13'3"	4040 mm	13'3"	4040 mm	13'3"	
8 Track Length	5030 mm	16'6"	5030 mm	16'6"	5030 mm	16'6"	5030 mm	16'6"	
9 Track Gauge	2590 mm	8'5"	2590 mm	8'5"	2590 mm	8'5"	2590 mm	8'5"	
10 Track Width/Undercarriage Width:									
600 mm (24") Shoes	3190 mm	10'5"	3190 mm	10'5"	3190 mm	10'5"	3190 mm	10'5"	
700 mm (28") Shoes	3290 mm	10'9"	3290 mm	10'9"	3290 mm	10'9"	3290 mm	10'9"	
800 mm (31") Shoes	3390 mm	11'1"	3390 mm	11'1"	3390 mm	11'1"	3390 mm	11'1"	
Bucket Type	GDY		GDY		GDY		GDY		
Bucket Capacity	1.40 m ³	1.83 yd ³	1.50 m ³	1.96 yd ³	1.60 m ³	2.09 yd ³	1.90 m ³	2.48 yd ³	
Bucket Tip Radius	1680 mm	5'6"	1680 mm	5'6"	1680 mm	5'6"	1890 mm	6'2"	

336 Hydraulic Excavator Specifications

Working Ranges and Forces

All dimensions are approximate and may vary depending on bucket selection.



Boom Options

Reach Boom 6.5 m (21'4")

Mass Boom 6.18 m (20'3")

Stick Options

Reach Stick

Mass Stick

	R3.9DB (12'10")		R3.2DB (10'6")		R2.8DB (9'2")		M2.55TB (8'4")	
1 Maximum Digging Depth	8110 mm	26'7"	7410 mm	24'3"	7010 mm	22'11"	6580 mm	21'7"
2 Maximum Reach at Ground Line	11 640 mm	38'2"	10 940 mm	35'10"	10 630 mm	34'10"	10 190 mm	33'5"
3 Maximum Cutting Height	10 700 mm	35'1"	10 290 mm	33'9"	10 340 mm	33'11"	10 030 mm	32'10"
4 Maximum Loading Height	7580 mm	24'10"	7190 mm	23'7"	7190 mm	23'7"	6690 mm	21'11"
5 Minimum Loading Height	1990 mm	6'6"	2690 mm	8'9"	3090 mm	10'1"	3000 mm	9'10"
6 Maximum Depth Cut for 2440 mm (8'0") Level Bottom	7970 mm	26'1"	7240 mm	23'9"	6840 mm	22'5"	6400 mm	20'11"
7 Maximum Vertical Wall Digging Depth	6950 mm	22'9"	6130 mm	20'1"	6060 mm	19'10"	5070 mm	16'7"
Bucket Digging Force (ISO)	223 kN	50,020 lbf	223 kN	50,020 lbf	223 kN	50,020 lbf	271 kN	60,950 lbf
Stick Digging Force (ISO)	146 kN	32,910 lbf	169 kN	37,950 lbf	188 kN	42,290 lbf	192 kN	43,050 lbf
Bucket Type	GDx		GDx		GDx		GDx	
Bucket Capacity	1.40 m ³	1.83 yd ³	1.50 m ³	1.96 yd ³	1.60 m ³	2.09 yd ³	1.90 m ³	2.48 yd ³
Bucket Tip Radius	1680 mm	5'6"	1680 mm	5'6"	1680 mm	5'6"	1890 mm	6'2"

336 Hydraulic Excavator Specifications

Bucket Specifications and Compatibility

	Linkage	Width		Capacity		Weight		Fill	Long Undercarriage									
									6.8 t (14,991 lb) Counterweight					7.5 t (16,667 lb) Counterweight				
									Reach Boom			Mass Boom	Reach HD Boom	Reach Boom			Mass Boom	
									R2.8 (9'2")	R3.2 (10'6")	R3.9 (12'10")	M2.55 (8'4")	R3.2HD (10'6")	R2.8 (9'2")	R3.2 (10'6")	R3.9 (12'10")	M2.55 (8'4")	
Pin-On (No Quick Coupler)																		
General Duty Excavation	DB	1400	55	1.40	1.83	1163	2,563	100	●	●	●		●	●	●	●		
	DB	1450	57	1.50	1.96	1200	2,645	100	●	●	●		●	●	●	●		
	DB	1550	61	1.60	2.09	1262	2,783	100	●	●	●		●	●	●	●		
Heavy Duty Excavation	DB	1450	57	1.40	1.83	1467	3,234	100	●	●	●		●	●	●	●		
	DB	1500	59	1.50	1.96	1518	3,346	100	●	●	⊙		●	●	●	●		
Heavy Duty	DB	1500	61	1.88	2.46	1583	3,490	100	●	⊙	⊖		●	●	●	⊙		
Heavy Duty Excavation – Skeleton	DB	1450	57	1.40	1.83	1466	3,232	100	●	●	●		●	●	●	●		
General Duty Excavation	TB	1500	59	1.90	2.48	1857	4,094	100				●					●	
	TB	1600	63	2.00	2.62	1904	4,197	100				⊙					●	
Maximum load with pin-on (payload + bucket)								kg	5455	5160	4500	5760	5370	5855	5545	4855	6200	
								lb	12,026	11,376	9,921	12,699	11,839	12,908	12,225	10,703	13,669	
With Cat Pin Grabber Coupler																		
General Duty Excavation	DB	1400	55	1.40	1.83	1163	2,563	100	●	●	⊙		●	●	●	●		
	DB	1450	57	1.50	1.96	1200	2,645	100	●	●	⊙		●	●	●	⊙		
	DB	1550	61	1.60	2.09	1262	2,783	100	●	●	⊖		●	●	●	⊙		
Heavy Duty Excavation	DB	1450	57	1.40	1.83	1467	3,234	100	●	●	⊖		●	●	●	⊙		
	DB	1500	59	1.50	1.96	1518	3,346	100	●	⊙	⊖		●	●	●	⊙		
Heavy Duty	DB	1500	60	1.88	2.46	1583	3,490	100	⊖	⊖	○		⊖	⊙	⊙	○		
Heavy Duty Excavation – Skeleton	DB	1450	57	1.40	1.83	1466	3,232	100	●	●	⊖		●	●	●	⊙		
General Duty Excavation	TB	1500	59	1.90	2.48	1857	4,094	100				⊖					⊙	
	TB	1600	63	2.00	2.62	1904	4,197	100				○					⊖	
Maximum load with coupler (payload + bucket)								kg	4760	4465	3808	4707	4674	5160	4850	4159	5151	
								lb	10,495	9,844	8,396	10,377	10,305	11,377	10,693	9,170	11,356	

The above loads are in compliance with hydraulic excavator standard EN474-5:2006 + A3:2013, they do not exceed 87% of hydraulic lifting capacity or 75% of tipping capacity with front linkage fully extended at ground line with bucket curled. Capacity based on ISO 7451:2007. Bucket weight with General Duty tips.

Maximum Material Density:

- 2100 kg/m³ (3,500 lb/yd³)
- ⊙ 1800 kg/m³ (3,000 lb/yd³)
- ⊖ 1500 kg/m³ (2,500 lb/yd³)
- 1200 kg/m³ (2,000 lb/yd³)

Caterpillar recommends using appropriate work tools to maximize the value customers receive from our products. Use of work tools, including buckets, which are outside of Caterpillar's recommendations or specifications for weight, dimensions, flows, pressures, etc. may result in less-than-optimal performance, including but not limited to reductions in production, stability, reliability, and component durability. Improper use of a work tool resulting in sweeping, prying, twisting and/or catching of heavy loads will reduce the life of the boom and stick.

336 Hydraulic Excavator Specifications

Attachments Offering Guide

Not all Attachments are available in all regions. Consult your Cat dealer for configurations available in your region.

Match * Working range front only No Match

PIN-ON ATTACHMENTS

Undercarriage		L			
Counterweight		6.8 t (14,991 lb)			
Boom Type		Reach			ME
Stick Length		2.8 m (9'2")	3.2 m (10'6")	3.9 m (12'10")	2.55 m (8'4")
Hydraulic Hammers	H140 S	✓	✓	✓	✓
	H160 S	✓	✓	✓	✓
Pulverizers	P225	✓	✓	✓	
	P235	✓	✓	✓	✓

Undercarriage		L				
Counterweight		7.56 t (16,667 lb)				
Boom Type		Reach		Reach HD	ME	
Stick Length		2.8 m (9'2")	3.2 m (10'6")	3.9 m (12'10")	3.2 m HD (10'6")	2.55 m (8'4")
Hydraulic Hammers	H140 S	✓	✓	✓	✓	✓
	H160 S	✓	✓	✓	✓	✓
Pulverizers	P225	✓	✓	✓	✓	
	P235	✓	✓	✓	✓	✓

CAT PIN GRABBER COUPLER ATTACHMENTS

Undercarriage		L			
Counterweight		6.8 t (14,991 lb)			
Boom Type		Reach			ME
Stick Length		2.8 m (9'2")	3.2 m (10'6")	3.9 m (12'10")	2.55 m (8'4")
Hydraulic Hammers	H140 S	✓	✓	✓	✓
	H160 S	✓	✓	✓*	✓
Pulverizers	P225	✓	✓	✓	
	P235	✓	✓*		✓*

Undercarriage		L				
Counterweight		7.56 t (16,667 lb)				
Boom Type		Reach		Reach HD	ME	
Stick Length		2.8 m (9'2")	3.2 m (10'6")	3.9 m (12'10")	3.2 m HD (10'6")	2.55 m (8'4")
Hydraulic Hammers	H140 S	✓	✓	✓	✓	✓
	H160 S	✓	✓	✓	✓	✓
Pulverizers	P225	✓	✓	✓	✓	
	P235	✓	✓		✓	✓

BOOM-MOUNT ATTACHMENTS

Undercarriage		L				
Counterweight		6.8 t (14,991 lb)		7.56 t (16,667 lb)		
Boom Type		Reach	ME	Reach	Reach HD	ME
Mobile Scrap and Demolition Shears	S2070	✓	✓	✓	✓	✓
	S2090	✓	✓	✓	✓	✓
	S3050	✓	✓	✓	✓	✓
	S3070	✓	✓	✓	✓	✓

Standard and Optional Equipment

Standard and optional equipment may vary. Consult your Cat dealer for details.

	Standard	Optional		Standard	Optional
ENGINE			UNDERCARRIAGE AND STRUCTURES		
Cold start block heaters		✓	Long undercarriage	✓	
Three selectable modes: Power, Smart, Eco	✓		Towing eye on base frame	✓	
Automatic engine speed control	✓		Full-length track guiding guards		✓
52° C (126° F) high-ambient cooling capacity	✓		Segmented track guiding guards		✓
Hydraulic reverse fan		✓	Swivel guard	✓	
-18° C (0° F) cold start capability	✓		HD bottom guard	✓	
Double element air filter with integrated precleaner	✓		HD travel motor guard	✓	
Dual stage four micron main filter and 10 micron primary filter with water separator and water separator indicator switch	✓		Grease lubricated track	✓	
Remote disable	✓		HD swing frame		✓
HYDRAULIC SYSTEM			HD swing bearing		✓
Boom and stick regeneration circuit	✓		Base frame with HD rollers		✓
Electronic main control valve	✓		Base frame with DF rollers		✓
Automatic hydraulic oil warm up	✓		6.8 t (14,991 lb) counterweight		✓
Reverse swing damping valve	✓		7.56 t (16,667 lb) counterweight		✓
Automatic swing parking brake	✓		600 mm (24") double grouser track shoes		✓
High performance hydraulic return filter	✓		700 mm (28") triple grouser track shoes		✓
Two speed travel	✓		800 mm (31") triple grouser track shoes		✓
Combined two-way auxiliary circuit		✓	800 mm (31") HD triple grouser track shoes		✓
Combined two-way auxiliary circuit with hammer return filter		✓	BOOMS, STICKS AND LINKAGES		
Medium-pressure auxiliary circuit		✓	6.18 m (20'3") Mass boom		✓
Quick coupler circuit for Cat Pin Grabber		✓	6.5 m (21'4") Reach boom		✓
			6.5 m (21'4") HD Reach boom		✓
			2.55 m (8'4") stick		✓
			2.8 m (9'2") stick		✓
			3.2 m (10'6") stick		✓
			3.2 m (10'6") HD stick		✓
			3.9 m (12'10") stick		✓
			Bucket linkage, TB family without lifting eye, Cat GRADE		✓
			Bucket linkage, DB family without lifting eye, Cat GRADE		✓

(continued on next page)

336 Standard and Optional Equipment

Standard and Optional Equipment (continued)

Standard and optional equipment may vary. Consult your Cat dealer for details.

	Standard	Optional		Standard	Optional
ELECTRICAL SYSTEM			SERVICE AND MAINTENANCE		
Maintenance-free 1,000 CCA batteries (×2)	✓		Grouped location of engine oil and fuel filters	✓	
Centralized electrical disconnect switch	✓		Scheduled Oil Sampling (S·O·S SM) ports	✓	
LED chassis light, LH and RH boom lights, cab lights	✓		SAFETY AND SECURITY		
Premium surround working lights		✓	Cat Command remote control		✓
CAT TECHNOLOGY			Caterpillar One Key security system	✓	
Cat Product Link™	✓		Lockable external tool/storage box	✓	
Work tool recognition	✓		Lockable door, fuel, and hydraulic tank locks	✓	
Work tool tracking*	✓		Lockable fuel drain compartment	✓	
Laser catcher		✓	Service platform with anti-skid plate and recessed bolts	✓	
Cat GRADE with 2D and offset memory	✓		RH handrail and hand hold (ISO 2867:2011 compliant)	✓	
Cat GRADE with Advanced 2D		✓	Signaling/warning horn	✓	
Cat GRADE with 3D connectivity:		✓	Ground-level secondary engine shutoff switch	✓	
– Virtual Reference Station**			Rearview camera	✓	
– Internet Base Service Station**			360° visibility		✓
– Trimble Connected Community**			Falling object guard system (not compatible with cab light cover, rain protector)		✓
Cat Assist:	✓				
– Grade Assist					
– Boom Assist					
– Bucket Assist					
– Swing Assist					
– Lift Assist					
Cat PAYLOAD:	✓				
– Static weigh					
– Auto calibration					
– Payload/cycle information					
– USB reporting capability					
2D E-Fence:	✓				
– E-ceiling					
– E-floor					
– E-swing					
– E-wall					
– E-cab avoidance					
Auto hammer stop	✓				
Remote Services capability	✓				
Auto Dig Boost	✓				

*Paired with PL161 attachment locator.

**Subscription required.

Dealer Installed Kit and Attachments

Attachments may vary. Consult your Cat dealer for details.

CAB

- Radial lower wiper
- Joysticks with horizontal sliders
- LH/RH electrical pedal for tool control
- Rain protector plus cab light cover

SAFETY AND SECURITY

- Bluetooth® key fob

GUARDS

- Side rubber bumper guard
- Falling object guard system (not compatible with cab light cover, rain protector)
- Mesh guard full front (not compatible with cab light cover, rain protector)
- Mesh guard lower half front
- Full protecting vandalism guard

336 Cab Options

Cab Options

	Deluxe	Premium
ROPS, standard sound suppression	●	X
ROPS, advanced sound suppression	X	●
High-resolution 254 mm (10") LCD touchscreen monitor	●	●
High-resolution 254 mm (10") LCD touchscreen monitor + additional monitor (for use with Cat GRADE with Advanced 2D or Cat GRADE with 3D)	○	○
Automatic bi-level air conditioner	●	●
Jog dial and shortcut keys for monitor control	●	●
Keyless push-to-start engine control	●	●
Height-adjustable console, infinite with no tool	●	●
Heated seat with air-adjustable suspension	●	X
Heated and cooled seat with automatic adjustable suspension	X	●
51 mm (2") seat belt	●	●
Tilt-up left-side console	●	●
Bluetooth integrated radio with USB ports	●	●
12V DC outlets	●	●
Document storage	●	●
Rear head storage net and lunchbox storage net	●	●
Cup and bottle holders	●	●
Openable two-piece front window	●	●
Radial wiper with washer	●	X
Parallel wiper with washer	X	●
Radial lower wiper	○	○
Openable polycarbonate skylight hatch	●	●
LED dome light	●	●
Floor welcome light	●	●
Roller front sunscreen	●	●
Roller rear sunscreen	○	●
Rear window emergency exit	●	●
Washable floor mat	●	●
Beacon ready	●	●

● Standard

○ Optional

X Not available

For more complete information on Cat products, dealer services, and industry solutions, visit us on the web at www.cat.com

© 2020 Caterpillar
All rights reserved

Materials and specifications are subject to change without notice. Featured machines in photos may include additional equipment. See your Cat dealer for available options.

CAT, CATERPILLAR, LET'S DO THE WORK, their respective logos, "Caterpillar Corporate Yellow," the "Power Edge" and Cat "Modern Hex" trade dress as well as corporate and product identity used herein, are trademarks of Caterpillar and may not be used without permission.

Based on the Labor, Safety and Health Laws in Japan, employer of small construction equipment are required to provide specific training for all operators on machines with ship weight less than 3 metric ton. For machines greater than 3 metric ton, operator needs to obtain operator license certification from a Government approved registered training school.

AEXQ2238-04 (11-2020)
Replaces AEXQ2238-03
Build Number: 07C
(Japan)

