



# 336 GC

## Hydraulic Excavator

# Technical Specifications

### Engine

|                                   |                  |
|-----------------------------------|------------------|
| Engine Model                      | Cat® C7.1 ACERT™ |
| Net Power – ISO 9249              | 204 kW           |
| Net Power – SAE J1349             | 204 kW           |
| Gross Power – ISO 14396/SAE J1995 | 205 kW           |
| Bore                              | 105 mm           |
| Stroke                            | 135 mm           |
| Displacement                      | 7.1 L            |

- Meets Japan 2014 (Tier 4 Final) emission standards.
- Recommended for use up to 3300 m altitude with engine power derate above 2300 m.
- Net power advertised is the power available at the flywheel when the engine is equipped with fan, air cleaner, muffler, and alternator.
- Rating at 2,200 rpm.

### Engine rpm

|           |           |
|-----------|-----------|
| Operation | 1,750 rpm |
| Travel    | 1,750 rpm |

### Swing Mechanism

|                      |          |
|----------------------|----------|
| Swing Speed          | 8.74 rpm |
| Maximum Swing Torque | 137 kN·m |

### Weights

|                  |           |
|------------------|-----------|
| Operating Weight | 34 200 kg |
|------------------|-----------|

- Standard undercarriage, Reach boom, R3.2DB stick, GDX 1.50 m<sup>3</sup> bucket, 700 mm triple grouser shoes, 6.8 t counterweight.

### Track

|                                       |        |
|---------------------------------------|--------|
| Standard Track Shoes Width            | 700 mm |
| Optional Track Shoes Width            | 800 mm |
| Number of Shoes (each side)           | 45     |
| Number of Track Rollers (each side)   | 7      |
| Number of Carrier Rollers (each side) | 2      |

### Drive

|                      |          |
|----------------------|----------|
| Maximum Gradeability | 35°/70%  |
| Maximum Travel Speed | 4.7 km/h |
| Maximum Drawbar Pull | 296 kN   |

### Hydraulic System

|  |                              |
|--|------------------------------|
| Main System – Maximum Flow – Implement   | 560 L/min<br>(280 × 2 pumps) |
| Maximum Pressure – Equipment – Implement | 35 000 kPa                   |
| Maximum Pressure – Travel                | 35 000 kPa                   |
| Maximum Pressure – Swing                 | 28 000 kPa                   |
| Boom Cylinder – Bore                     | 145 mm                       |
| Boom Cylinder – Stroke                   | 1440 mm                      |
| Stick Cylinder – Bore                    | 160 mm                       |
| Stick Cylinder – Stroke                  | 1738 mm                      |
| DB Bucket Cylinder – Bore                | 145 mm                       |
| DB Bucket Cylinder – Stroke              | 1151 mm                      |

# 336 GC Hydraulic Excavator Specifications

## Service Refill Capacities

|                                   |       |
|-----------------------------------|-------|
| Fuel Tank Capacity                | 600 L |
| Cooling System                    | 39 L  |
| Engine Oil (with filter)          | 25 L  |
| Swing Drive (each)                | 18 L  |
| Final Drive (each)                | 8 L   |
| Hydraulic System (including tank) | 373 L |
| Hydraulic Tank                    | 153 L |
| DEF Tank                          | 50 L  |

## Standards

|          |                  |
|----------|------------------|
| Brakes   | ISO 10265:2008   |
| Cab/FOGS | ISO 10262:1998   |
| Cab/ROPS | ISO 12117-2:2008 |

## Sound Performance

|                       |           |
|-----------------------|-----------|
| ISO 6395 (external)   | 105 dB(A) |
| ISO 6396 (inside cab) | 70 dB(A)  |

- Hearing protection may be needed when operating with an open operator station and cab (when not properly maintained or doors/windows open) for extended periods or in a noisy environment.

## Operating Weights and Ground Pressures

|  | 700 mm Triple Grouser Shoes |                 | 800 mm Triple Grouser Shoes |                 |
|--|-----------------------------|-----------------|-----------------------------|-----------------|
|  | Weight                      | Ground Pressure | Weight                      | Ground Pressure |
| <b>6.8 t Counterweight</b>                               |                             |                 |                             |                 |
| Reach Boom + R3.2 Stick + 1.50 m <sup>3</sup> GDX Bucket | 34 200 kg                   | 60.0 kPa        | 34 800 kg                   | 52.5 kPa        |
| Reach Boom + R2.8 Stick + 1.60 m <sup>3</sup> GDX Bucket | 34 100 kg                   | 59.9 kPa        | 34 700 kg                   | 52.4 kPa        |

All operating weights include a 90% fuel tank with 75 kg operator.

# 336 GC Hydraulic Excavator Specifications

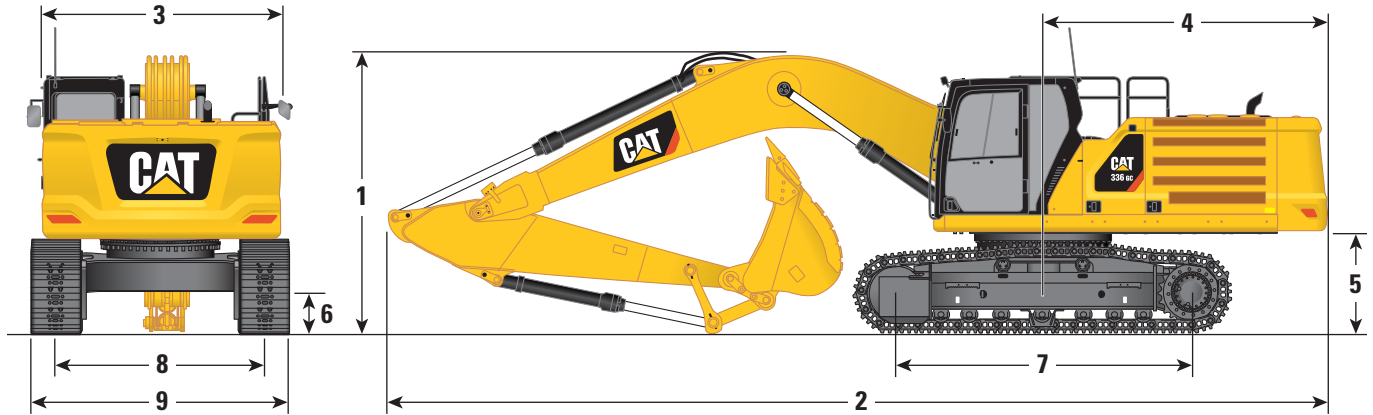
## Major Component Weights

|   | kg     |
|---|--------|
| Base machine with 6.8 t counterweight, standard swing frame, base frame with standard track rollers and carrier rollers | 23 320 |
| Track Shoes:  |        |
| 700 mm Width, 11 mm Thick, Triple Grouser Track Shoes   | 4080   |
| 800 mm Width, 13 mm Thick, Triple Grouser Track Shoes   | 4680   |
| Two Boom Cylinders  | 560    |
| Weight of 90% Fuel Tank and 75 kg Operator  | 550    |
| Counterweight:  |        |
| 6.8 t Counterweight   | 6800   |
| Swing Frame:  |        |
| Standard Swing Frame  | 3160   |
| Standard Undercarriage:   |        |
| Base Frame with Standard Track Rollers and Carrier Rollers  | 7870   |
| Boom (including lines, pins, stick cylinder):   |        |
| Reach Boom 6.5 m  | 3140   |
| Sticks (including lines, pins, bucket cylinder, bucket linkage):  |        |
| Reach Stick R2.8DB  | 1650   |
| Reach Stick R3.2DB  | 1760   |
| Buckets (without linkage):  |        |
| 1.50 m <sup>3</sup> GDX   | 1310   |
| 1.60 m <sup>3</sup> GDX   | 1380   |
| Quick Coupler:  |        |
| Pin Grabber QC  | 700    |

# 336 GC Hydraulic Excavator Specifications

## Dimensions

All dimensions are approximate and may vary depending on bucket selection.



### Boom Option

Reach Boom  
6.5 m

### Stick Options

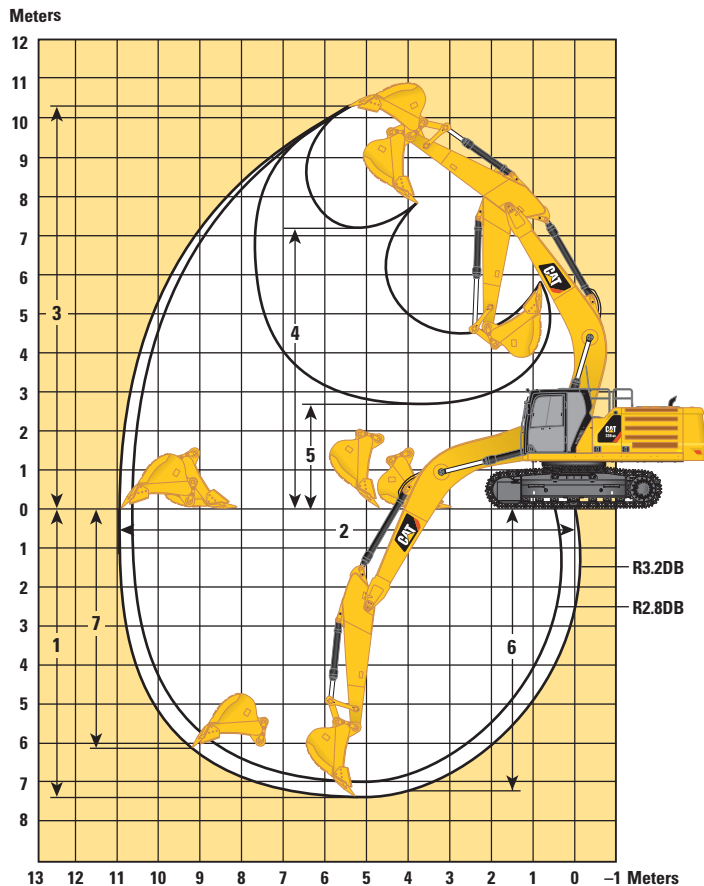
Reach Stick

|  | R3.2DB              | R2.8DB              |
|--|---------------------|---------------------|
| <b>1 Machine Height:</b>   |                     |                     |
| Cab Height   | 3170 mm             | 3170 mm             |
| FOGS Height  | 3310 mm             | 3310 mm             |
| Handrails Height   | 3160 mm             | 3160 mm             |
| With Boom/Stick/Bucket Installed                                     | 3360 mm             | 3580 mm             |
| With Boom/Stick Installed  | 3300 mm             | 3430 mm             |
| With Boom Installed  | 2880 mm             | 2880 mm             |
| With Boom/Stick/Bucket Installed (with auxiliary lines)              | 3420 mm             | 3600 mm             |
| With Boom/Stick Installed (with auxiliary lines)                     | 3380 mm             | 3480 mm             |
| With Boom Installed (with auxiliary lines)                           | 2970 mm             | 2970 mm             |
| <b>2 Machine Length:</b>   |                     |                     |
| With Boom/Stick/Bucket Installed                                     | 11 150 mm           | 11 210 mm           |
| With Boom/Stick Installed  | 11 130 mm           | 11 180 mm           |
| With Boom Installed  | 9960 mm             | 9960 mm             |
| With Boom/Stick/Bucket Installed (with auxiliary lines)              | 11 150 mm           | 11 210 mm           |
| With Boom/Stick Installed (with auxiliary lines)                     | 11 130 mm           | 11 180 mm           |
| With Boom Installed (with auxiliary lines)                           | 10 010 mm           | 10 010 mm           |
| <b>3 Upperframe Width without Walkways</b>                           | 3030 mm             | 3030 mm             |
| <b>4 Tail Swing Radius</b>   | 3530 mm             | 3530 mm             |
| <b>5 Counterweight Clearance</b>                                     | 1250 mm             | 1250 mm             |
| <b>6 Ground Clearance</b>  | 510 mm              | 510 mm              |
| <b>7 Track Length – Length to Center of Rollers</b>                  | 3610 mm             | 3610 mm             |
| <b>8 Track Gauge – Extended (standard undercarriage)</b>             | 2590 mm             | 2590 mm             |
| <b>9 Track Width/Undercarriage Width (with steps/without steps):</b> |                     |                     |
| 700 mm Shoes   | 3290 mm             | 3290 mm             |
| 800 mm Shoes   | 3390 mm             | 3390 mm             |
| Bucket Type  | GDX                 | GDX                 |
| Bucket Capacity  | 1.50 m <sup>3</sup> | 1.60 m <sup>3</sup> |
| Bucket Tip Radius  | 1680 mm             | 1680 mm             |

# 336 GC Hydraulic Excavator Specifications

## Working Ranges and Forces

All dimensions are approximate and may vary depending on bucket selection.



### Boom Option

Reach Boom  
6.5 m

### Stick Options

Reach Stick

|  | R3.2DB              | R2.8DB              |
|--|---------------------|---------------------|
| 1 Maximum Digging Depth                      | 7410 mm             | 7010 mm             |
| 2 Maximum Reach at Ground Line               | 10 940 mm           | 10 630 mm           |
| 3 Maximum Cutting Height                     | 10 290 mm           | 10 340 mm           |
| 4 Maximum Loading Height                     | 7190 mm             | 7190 mm             |
| 5 Minimum Loading Height                     | 2690 mm             | 3090 mm             |
| 6 Maximum Depth Cut for 2240 mm Level Bottom | 7240 mm             | 6840 mm             |
| 7 Maximum Vertical Wall Digging Depth        | 6130 mm             | 6060 mm             |
| Bucket Digging Force (SAE)                   | 183 kN              | 183 kN              |
| Bucket Digging Force (ISO)                   | 208 kN              | 208 kN              |
| Stick Digging Force (SAE)                    | 145 kN              | 161 kN              |
| Stick Digging Force (ISO)                    | 150 kN              | 167 kN              |
| Bucket Type                                  | GDX                 | GDX                 |
| Bucket Capacity                              | 1.50 m <sup>3</sup> | 1.60 m <sup>3</sup> |
| Bucket Tip Radius                            | 1680 mm             | 1680 mm             |

# 336 GC Hydraulic Excavator Specifications

## Bucket Specifications and Compatibility

|  | Linkage | Width<br>mm | Capacity<br>m <sup>3</sup> | Weight<br>kg | Fill<br>% | 6.8 t Counterweight |      |
|--|---------|-------------|----------------------------|--------------|-----------|---------------------|------|
|  |         |             |                            |              |           | Reach Boom          |      |
|  |         |             |                            |              |           | R2.8                | R3.2 |
| <b>Pin-On (No Quick Coupler)</b>             |         |             |                            |              |           |                     |      |
| GDX  | DB      | 1400        | 1.40                       | 1143         | 100       | ●                   | ●    |
|  | DB      | 1450        | 1.50                       | 1180         | 100       | ●                   | ●    |
|  | DB      | 1550        | 1.60                       | 1240         | 100       | ●                   | ●    |
| HDX  | DB      | 1450        | 1.40                       | 1430         | 100       | ●                   | ●    |
|  | DB      | 1500        | 1.50                       | 1476         | 100       | ●                   | ●    |
| HDX (Skeleton type)                          | DB      | 1450        | 1.40                       | 1449         | 100       | ●                   | ●    |
| Maximum load with pin-on (payload + bucket)  |         |             |                            |              | kg        | 5215                | 4910 |
| <b>With Cat Pin Grabber Coupler</b>          |         |             |                            |              |           |                     |      |
| GDX  | DB      | 1400        | 1.40                       | 1143         | 100       | ●                   | ●    |
|  | DB      | 1450        | 1.50                       | 1180         | 100       | ●                   | ●    |
|  | DB      | 1550        | 1.60                       | 1240         | 100       | ●                   | ◎    |
| HDX  | DB      | 1450        | 1.40                       | 1430         | 100       | ●                   | ◎    |
|  | DB      | 1500        | 1.50                       | 1476         | 100       | ●                   | ◎    |
| HDX (Skeleton type)                          | DB      | 1450        | 1.40                       | 1449         | 100       | ●                   | ◎    |
| Maximum load with coupler (payload + bucket) |         |             |                            |              | kg        | 4521                | 4216 |

The above loads are in compliance with hydraulic excavator standard EN474-5:2006 + A3:2013, they do not exceed 87% of hydraulic lifting capacity or 75% of tipping capacity with front linkage fully extended at ground line with bucket curled.

Capacity based on ISO 7451:2007.

Bucket weight with General Duty tips.

### Maximum Material Density:

● 2100 kg/m<sup>3</sup>

◎ 1800 kg/m<sup>3</sup>

Caterpillar recommends using appropriate work tools to maximize the value customers receive from our products. Use of work tools, including buckets, which are outside of Caterpillar's recommendations or specifications for weight, dimensions, flows, pressures, etc. may result in less-than-optimal performance, including but not limited to reductions in production, stability, reliability, and component durability. Improper use of a work tool resulting in sweeping, prying, twisting and/or catching of heavy loads will reduce the life of the boom and stick.

## Attachments Offering Guide

### PIN-ON ATTACHMENTS

| Boom Type                |        | Reach Boom |      |
|--------------------------|--------|------------|------|
| Stick Size               |        | R2.8       | R3.2 |
| Hydraulic Hammers        | H140Es | ✓          | ✓    |
|                          | H160Es | ✓          | ✓    |
| Pulverizers              | P225   | ✓          | ✓    |
|                          | P235   | ✓          | ✓    |
| Cat Pin Grabber Couplers |        | ✓          | ✓    |

### CAT PIN GRABBER COUPLER ATTACHMENTS

| Boom Type         |        | Reach Boom |      |
|-------------------|--------|------------|------|
| Stick Size        |        | R2.8       | R3.2 |
| Hydraulic Hammers | H140Es | ✓          | ✓    |
|                   | H160Es | ✓          | ✓    |
| Pulverizers       | P225   | ✓          | ✓    |
|                   | P235   | ✓*         |      |

### BOOM-MOUNTED ATTACHMENTS

| Boom Type                          |       | Reach Boom |
|------------------------------------|-------|------------|
| Mobile Scrap and Demolition Shears | S2090 | ✓*         |
|                                    | S3050 | ✓          |
|                                    | S3070 | ✓*         |

\*Over the front only.

# 336 GC Standard and Optional Equipment

## Standard and Optional Equipment

Standard and optional equipment may vary. Consult your Cat dealer for details.

|   | Standard | Optional |  | Standard | Optional |
|---|----------|----------|--|----------|----------|
| <b>ENGINE</b>   |          |          | <b>BOOMS, STICKS AND LINKAGES</b>                        |          |          |
| Cat C7.1 ACERT engine, Japan 2014 (Tier 4 Final)  | ✓        |          | 6.5 m Reach boom   | ✓        |          |
| Two selectable modes: Power, Smart  | ✓        |          | 2.8 m stick  |          | ✓        |
| One-touch low idle with automatic engine speed control  | ✓        |          | 3.2 m stick  |          | ✓        |
| 52° C high-ambient cooling capacity   | ✓        |          | Bucket linkage, DB family without lifting eye            |          | ✓        |
| -18° C cold start capability  | ✓        |          | <b>ELECTRICAL SYSTEM</b>                                 |          |          |
| Double element air filter with integrated precleaner  | ✓        |          | Maintenance-free 1,000 CCA batteries (×2)                | ✓        |          |
| Dual stage four micron main filter and 10 micron primary filter with water separator and water separator indicator switch | ✓        |          | Centralized electrical disconnect switch                 | ✓        |          |
| <b>HYDRAULIC SYSTEM</b>   |          |          | LED chassis light, LH and RH boom lights, cab lights     | ✓        |          |
| Boom and stick regeneration circuit   | ✓        |          | <b>CAT CONNECT TECHNOLOGY</b>                            |          |          |
| Electronic main control valve   | ✓        |          | Cat Product Link™  | ✓        |          |
| Automatic hydraulic oil warm up   | ✓        |          | <b>SERVICE AND MAINTENANCE</b>                           |          |          |
| Combined two-way auxiliary circuit  |          | ✓        | Grouped location of engine oil and fuel filters          | ✓        |          |
| Medium-pressure auxiliary circuit   |          | ✓        | Scheduled Oil Sampling (S·O·S <sup>SM</sup> ) ports      | ✓        |          |
| Quick coupler circuit for Cat Pin Grabber   |          | ✓        | <b>SAFETY AND SECURITY</b>                               |          |          |
| <b>UNDERCARRIAGE AND STRUCTURES</b>   |          |          | Caterpillar One Key security system                      | ✓        |          |
| Towing eye on base frame  | ✓        |          | Lockable external tool/storage box                       | ✓        |          |
| Track guiding guard, full length  |          | ✓        | Lockable door, fuel, and hydraulic tank locks            | ✓        |          |
| Track guiding guard, center   |          | ✓        | Lockable fuel drain compartment                          | ✓        |          |
| Bottom guard  |          | ✓        | Service platform with anti-skid plate and recessed bolts | ✓        |          |
| Travel motor guard  |          | ✓        | RH handrail and hand hold (ISO 2867:2011 compliant)      | ✓        |          |
| Grease lubricated track   | ✓        |          | Signaling/warning horn                                   | ✓        |          |
| Swing frame   | ✓        |          | Ground-level secondary engine shutoff switch             | ✓        |          |
| Swing bearing   | ✓        |          | Rearview camera  | ✓        |          |
| Base frame with standard rollers  |          | ✓        |  |          |          |
| 6.8 t counterweight   | ✓        |          |  |          |          |
| 700 mm triple grouser track shoes   |          | ✓        |  |          |          |
| 800 mm triple grouser track shoes   |          | ✓        |  |          |          |



## Dealer Installed Kit and Attachments

Attachments may vary. Consult your Cat dealer for details.

### CAB

- Radial lower wiper
- Polycarbonate roof hatch
- LH/RH electrical pedal for tool control
- Rain protector plus cab light cover

### SAFETY AND SECURITY

- Bluetooth® receiver kit
- Bluetooth key fob

### GUARDS

- Standard swivel guard
- Side rubber bumper guard
- Falling object guard system (not compatible with cab light cover, rain protector)
- Mesh guard full front (not compatible with cab light cover, rain protector)
- Mesh guard lower half front

## 336 GC Cab Options

### Cab Options

|  | Comfort |
|--|---------|
| ROPS, standard sound suppression                 | ●       |
| High-resolution 203 mm LCD touchscreen monitor   | ●       |
| Automatic bi-level air conditioner               | ●       |
| Jog dial and shortcut keys for monitor control   | ●       |
| Keyless push-to-start engine control             | ●       |
| Height-adjustable console, three steps with tool | ●       |
| Mechanically adjustable seat suspension          | ●       |
| 51 mm seat belt                                  | ●       |
| Fixed left-side console                          | ●       |
| Bluetooth integrated radio with USB ports        | ●       |
| 12V DC outlets (×2)                              | ●       |
| Document storage                                 | ●       |
| Cup and bottle holders                           | ●       |
| Openable two-piece front window                  | ●       |
| Upper radial wiper with 70/30 with washer        | ●       |
| Openable steel hatch                             | ●       |
| LED dome and lower interior lights               | ●       |
| Roller front sunscreen                           | ●       |

● Standard

For more complete information on Cat products, dealer services, and industry solutions, visit us on the web at [www.cat.com](http://www.cat.com)

© 2018 Caterpillar  
All rights reserved

Materials and specifications are subject to change without notice. Featured machines in photos may include additional equipment. See your Cat dealer for available options.

CAT, CATERPILLAR, SAFETY.CAT.COM, their respective logos, "Caterpillar Yellow" and the "Power Edge" trade dress, as well as corporate and product identity used herein, are trademarks of Caterpillar and may not be used without permission.

Based on the Labor, Safety and Health Laws in Japan, employer of small construction equipment are required to provide specific training for all operators on machines with ship weight less than 3 metric ton. For machines greater than 3 metric ton, operator needs to obtain operator license certification from a Government approved registered training school.

AEXQ2239 (04-2018)  
Build Number: 07A  
(Japan)

