

Cat[®] 908M

AG HANDLER



FEATURES:

The Cat[®] 908M Ag Handler is compact, yet powerful, allowing you to do what you want, when you need to, in any agricultural application. The Ag Handler has features that will maximize the performance of the machine, making it a perfect fit to use around the farm.

- **Efficiently Powerful** – Experience hybrid like fuel efficiency with an intelligent hydrostatic power train. Eco Mode will allow you to maximize fuel efficiency while maintaining the power going into the pile.
- **Work Made Easy** – Move more with Caterpillar's patented Optimized Z-Bar linkage. The parallel lift and high tilt forces throughout the working range allow you to safely and confidently handle loads with precise control. Multi-function work has never been easier with dedicated pumps for each system, allowing the operator to simultaneously lift, steer and drive without compromise.
- **Enjoy All Day Comfort** – Have a seat and enjoy excellent all around visibility, whisper quiet sound levels, and low-effort joystick controls while riding on a fully adjustable seat suspension. The spacious cab combined with smooth hydraulic and power train controls make this the most comfortable seat on your job site.
- **Customize Your Experience** – Meet your application requirements and individual preferences with Caterpillar's industry first adjustable power train and implement response settings. Fine tune machine performance with adjustments at your fingertips through the soft touch button keypad.
- **Configured for Success** – The Ag Handler is configured with items such as a high speed transmission for quick travel from farm to field, engine air pre-cleaner for dusty environments, Ag specific tires to maximize traction and LED work lights when operating early in the morning, ensuring that this machine is configured for success.

Specifications

Engine

Engine Model	Cat C3.3B DIT*	
Rated Net Power @ 2,500 rpm		
SAE J1349	51 kW	68 hp
Maximum Gross Power		
ISO 14396	55 kW	73 hp
SAE J1995	55 kW	74 hp
Maximum Net Power		
ISO 9249	52 kW	69 hp
SAE J1349	51 kW	68 hp

*The Cat C3.3B DIT engine meets U.S. EPA Tier 4 Final/EU Stage IIIB emission standards.

Weight

Operating Weight	6535 kg	14,402 lb
------------------	---------	-----------

Note: Machine with full fuel tank, ROPS/FOPS cab, 80 kg (176 lb) operator, skid steer loader coupler (SSL) and general purpose bucket (GP).

Buckets

Bucket Capacities	
ISO Coupler	0.9-1.5 m ³
SSL Style Coupler	1.2-2.0 yd ³

Travel Speeds

Speed 1	10 km/h	6.2 mph
Speed 2	20 km/h	12.4 mph
High Speed	35 km/h	21.7 mph

Hydraulic System

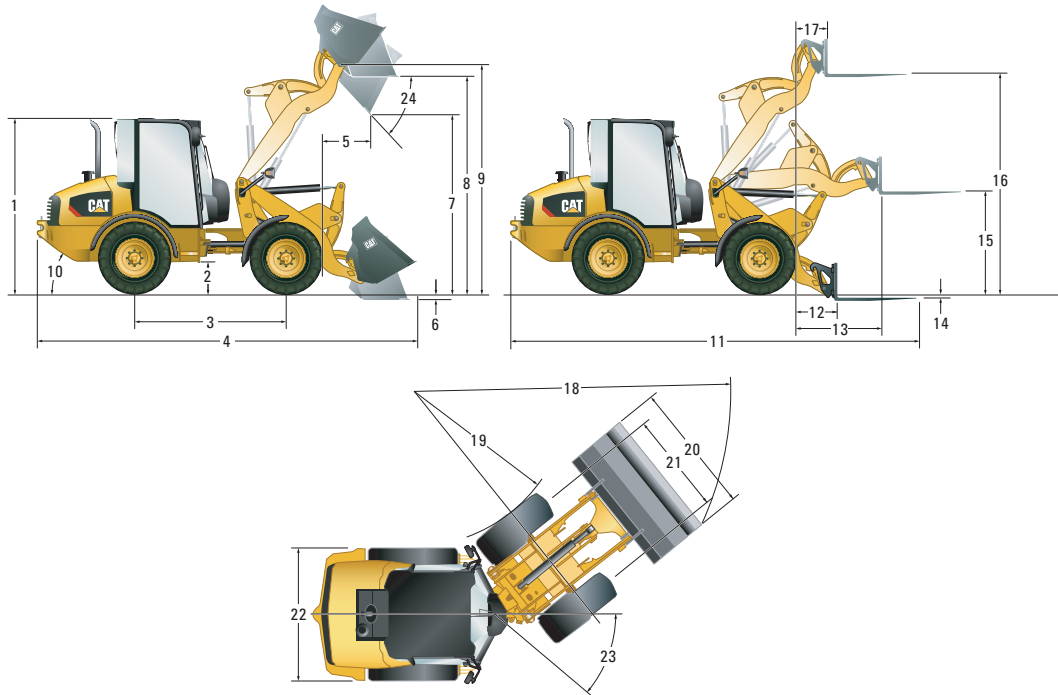
Main Relief – 3rd Aux Flow	235 bar	3,400 psi
Standard	85 L/min	22 gal/min
High Flow	130 L/min	34 gal/min
Hydraulic Cycle Time		
Lift	5.2 seconds	
Lower	3.2 seconds	
Dump	1.3 seconds	
Rack Back	2.1 seconds	

Service Refill Capacities

Cooling System	17 L	4.5 gal
Fuel Tank	78 L	20.6 gal
Hydraulic System	70 L	18.5 gal
Engine Oil	11.2 L	3.0 gal



908M Ag Handler



Dimensions

(All dimensions are approximate. Dimensions shown are based on the machine equipped with general purpose bucket and standard 400/70 R20, XMCL tires.)

	With ISO Coupler		With SSL Coupler	
1 Height: Ground to Cab	2632 mm	8 ft 7 in	2632 mm	8 ft 7 in
2 Height: Ground Clearance	335 mm	1 ft 1 in	335 mm	1 ft 1 in
3 Length: Wheel Base	2170 mm	7 ft 1 in	2170 mm	7 ft 1 in
4 Length: Overall with Bucket	5578 mm	18 ft 3 in	5735 mm	18 ft 9 in
5 Reach: Bucket at 45°	1055 mm	3 ft 5 in	1207 mm	3 ft 11 in
6 Dig Depth	147 mm	5.7 in	155 mm	6 in
7 Clearance: Bucket at 45°	2846 mm	9 ft 4 in	2806 mm	9 ft 2 in
8 Clearance: Level Bucket	3159 mm	10 ft 4 in	3151 mm	10 ft 4 in
9 Height: Bucket Pin	3366 mm	11 ft	3212 mm	10 ft 6 in
10 Departure Angle	33°		33°	
11 Length: Overall with Forks	6093 mm	19 ft 11 in	6111 mm	20 ft
12 Reach: Ground	878 mm	2 ft 10 in	896 mm	2 ft 11 in
13 Reach: Level Arm	1321 mm	4 ft 4 in	1452 mm	4 ft 9 in
14 Fork Dig Depth	163 mm	6.4 in	21 mm	0.8 in
15 Clearance: Level Arm	1358 mm	4 ft 5 in	1500 mm	4 ft 11 in
16 Clearance: Full Lift	3143 mm	10 ft 3 in	3285 mm	10 ft 9 in
17 Fork Reach at Full Lift	472 mm	1 ft 6 in	603 mm	1 ft 11 in
18 Turning Radius: Over Bucket	4478 mm	14 ft 8 in	4498 mm	14 ft 9 in
19 Turning Radius: Inside Tire	2033 mm	6 ft 8 in	2033 mm	6 ft 8 in
20 Width: Bucket	2060 mm	6 ft 9 in	2060 mm	6 ft 9 in
21 Width: Tread Center	1570 mm	5 ft 1 in	1570 mm	5 ft 1 in
22 Width: Over Tires	1990 mm	6 ft 6 in	1990 mm	6 ft 6 in
23 Articulation Angle	39°		39°	
24 Dump Angle at Full Lift	45°		45°	

Operating Specifications

Machine with full fuel tank, ROPS/FOPS cab, 80 kg (176 lb) operator, either SSL or ISO coupler and general purpose bucket (GP).

Coupler Type	ISO		SSL	
	400/70 R20		400/70 R20	
Tire Size	400/70 R20		400/70 R20	
Operating Weight	6488 kg	14,299 lb	6535 kg	14,402 lb
Rated Bucket Capacity	1.15 m ³	1.5 yd ³	1.15 m ³	1.5 yd ³
Breakout Force, Bucket	55 kN	12,337 lbf	46 kN	10,215 lbf
Rated Operating Load at Full Turn, Bucket	1994 kg	4,396 lb	1989 kg	4,385 lb
Straight Tipping Load, Bucket	4721 kg	10,408 lb	4717 kg	10,399 lb
Full Turn Static Tipping Load, Bucket	3988 kg	8,789 lb	3978 kg	8,766 lb
Rack Back, Transport Position	51°		51°	
Rated Operating Load at Full Turn, Forks (EN 474-3:2006, firm and level ground, 1.25 stability and 500 mm [20 in] load center)	2595 kg	5,719 lb	2421 kg	5,336 lb

Maximum Material Densities

Based on ISO 7546:1983, and rated operating loads at full turn with 100% bucket capacity and SSL coupler.

Bucket Type	General Purpose		Multi Purpose		Light Material	
Rated Capacity	1.1 m ³	1.4 yd ³	0.9 m ³	1.2 yd ³	1.5 m ³	2.0 yd ³
Dump Height	2806 mm	110 in	2799 mm	110 in	2826 mm	111 in
Maximum Material Density	1729 kg/m ³	2,914 lb/yd ³	2409 kg/m ³	4,060 lb/yd ³	1644 kg/m ³	2,771 lb/yd ³
Bucket Width	2060 mm	81 in	2060 mm	81 in	2060 mm	81 in



Bale Grab



Dual Bale Spear



Mixing Bucket



Grapple Bucket



Silage Defacer

908M Ag Handler

STANDARD EQUIPMENT

LOADER

- Return to dig work tool positioner
- Adjustable implement modulation

TRANSMISSION/HYDRAULICS

- Adjustable speed control (creeper control)
- Rimpull control
- Electronic throttle lock
- Adjustable Hystat response settings
- Ride control
- 100% differential lock on both axles, selectable on the move
- 18° frame oscillation, 78° articulation
- Transmission, 35 km/h (21.7 mph) with secondary steering and heavy duty axles
- Transmission inching function
- Hydrostatic drive
- Work tool quick coupler
- Proportional auxiliary hydraulic circuit
- Loader arm float function
- Connect under pressure hydraulic quick connector
- Parallel lift Z-bar loader
- Demand based cooling fan

ENGINE

- Precleaner for engine air filter
- Cat C3.3B DIT Tier 4 Final/Stage IIIB
- Two stage air cleaner with visual indicator
- Cat extended life coolant
- Lockable engine compartments
- Easy quick release fuel filter/water separator
- Engine oil drain valve (non spill eco drain)
- Closed circuit breather
- Eco Mode

ELECTRICAL

- Magnetic rotating beacon
- Work tool wiring harness
- Working lights, two front and two rear
- Cab mounted fuse panel
- Battery disconnect switch
- Heavy duty battery, 12V
- Engine cold starter aid
- Alternator 90 amp
- Service point connector for electronic diagnostics (Electronic Technician™)
- Reverse alarm

GENERAL

- E-coat paint primer
- Pressure test points
- Recovery hitch and pin
- Scheduled Oil Sampling S-O-S ports

OPERATOR ENVIRONMENT

- Adjustable steering column
- Air conditioning
- Heater with window, side and feet vents
- Heated rear window
- Radio/CD/MP3/WMA/AUX
- Two doors with sliding window
- Wiper/washer, front and rear
- Cabin light
- Pressurized cab
- Cup holder
- Sun visor
- ROPS and FOPS certified canopy/cab
- Adjustable arm rest
- Retractable seat belt
- Auxiliary power sockets
- Coat hook
- On board digital display cluster
- Sound suppression
- Multifunction joystick with direction control
- Two external knock back mirrors
- Warning indicators for major systems
- Easy clean cab floor
- Lockable storage box
- Adjustable internal mirror
- Operator station on isolation mounts
- Digital service hour meter
- Gauges: fuel hydraulic temp, coolant temp, speedometer
- Warnings: master, park brake, hydraulic oil pressure, engine oil pressure, coolant temp, electrical system, hydraulic filter bypass
- Suspended brake/accelerator pedals
- Cloth, electric air suspension, arm/head rest, lumbar support, heated back seat

OPTIONAL EQUIPMENT

LOADER

- High flow auxiliary hydraulics with pressure relieving quick disconnect manifold
- Load check valves

ENGINE

- Engine block heater 120V

ELECTRICAL

- Machine Security System (MSS)

GENERAL

- Custom color
- Tire options

FLUIDS

- Cat extended life coolant (-50° C/-58° F)

OPERATOR ENVIRONMENT

- Rear blind

WORK TOOLS

- For all work tools and standard/high flow options (consult your Cat dealer)

For more complete information on Cat products, dealer services, and industry solutions, visit us on the web at www.cat.com

© 2018 Caterpillar
All rights reserved

Materials and specifications are subject to change without notice. Featured machines in photos may include additional equipment. See your Cat dealer for available options.

CAT, CATERPILLAR, SAFETY.CAT.COM, their respective logos, "Caterpillar Yellow" and the "Power Edge" trade dress, as well as corporate and product identity used herein, are trademarks of Caterpillar and may not be used without permission.

AEHQ8117 (03-2018)
(N Am, Eur)

