



# MORE CHOICES. MORE CONFIDENCE.

---

CAT® ATTACHMENTS FOR YOUR  
320 GC, 320 OR 323 EXCAVATOR.



# COUPLERS

Cat® Couplers allow you to take on more jobs and expand your business.



**PIN GRABBER**

Change attachments in a matter of seconds.

For more information, specs and videos on Cat Couplers, visit [cat.com](http://cat.com).





### GENERAL DUTY

Good for dirt, loam and mixtures of dirt and fine gravel.



### HEAVY DUTY

Designed to move through mixed dirt, clay and rock.



### SEVERE DUTY

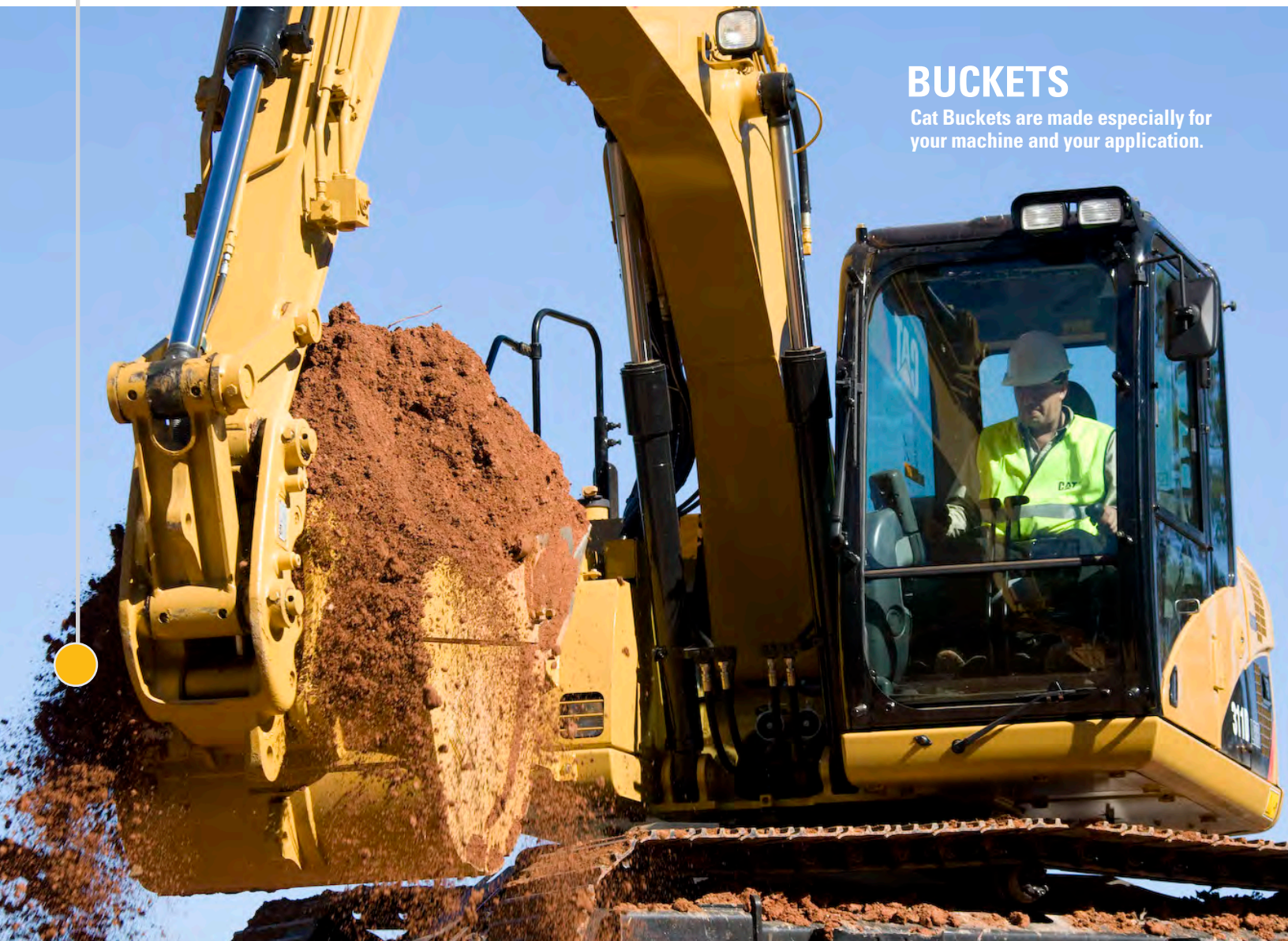
Engineered for digging and loading sand, caliche and granite.



### SPECIALTY

Used for cleanup, ditch cleaning and high-capacity applications.

For more information, specs and videos on Cat Buckets, visit [cat.com](http://cat.com).



## BUCKETS

Cat Buckets are made especially for your machine and your application.





### BASIC

Ideal for occasional breaking with reliable quality and value.



### PREMIUM

Designed for high-performance tasks with additional machine protection components.

For more information, specs and videos on Cat Hammers, visit [cat.com](http://cat.com).



## HAMMERS

The hardest hitting hammer in the industry. Cat Hammers are ideal for a range of demolition projects.





## MULTI PROCESSORS

Process with precision.  
Process with power.  
Cat Multi Processors are made  
for the toughest materials.



### HOUSING

Bidirectional, 360-degree rotations for more accurate and efficient processing with the fastest jaw change in the industry.



### CONCRETE CUTTER

Cut structural steel and heavily reinforced concrete for primary demolition.



### DEMOLITION

Break down the toughest materials, like large reinforced concrete pillars and foundations.



### PULVERIZER

Completely separate concrete from embedded rebar in primary and secondary demolition.



### UNIVERSAL

Precision-cut concrete for easier transportation.



### SHEAR

Take down steel structures and process scrap metal for primary and secondary demolition.

For more information, specs and videos on Cat Multi-Processors, visit [cat.com](http://cat.com).





## GRAPPLES

Cat Grapples are engineered for cleanup, material-handling or loading applications.



**CONTRACTORS**

Made for storm and demolition cleanup or site clearing.



**TRASH**

Good for moving low-density materials at landfills, transfer stations or recycling centers.



**DEMOLITION & SORTING**

Designed with 360° rotation for precision picking and sorting.

For more information, specs and videos on Cat Grapples, visit [cat.com](https://cat.com).



**STIFF LINK**

Engineered to enhance your material-handling capabilities without extra hydraulics.



**PRO SERIES**

Designed for clearing, cleanup and loading applications.

For more information, specs and videos on Cat Thumbs, visit [cat.com](http://cat.com).



## THUMBS

Cat Thumbs add versatility to your machine and bucket attachments.





## SHEARS

Made for fast processing with rotating or straight versions available.



## COMPACTORS

Designed with large compaction plates and high-power impulses for faster compaction.



## SECONDARY PULVERIZER

Quickly separates concrete from rebar and works on-site.





## RAKES

Available in a range of sizes for land clearing, brush piling and site preparation.



## RIPPERS

Designed for high-impact digging applications, like quarry work and site preparation in rock.

## TRENCHING BUNDLE

Combine all the attachments you need to get more done even faster.



BUCKETS



COUPLERS



COMPACTORS



HAMMERS



# ATTACHMENTS MADE FOR YOUR MACHINE.

Cat Attachments are engineered to work seamlessly with Cat machines, giving you greater stability, better performance and more options for your business. For more information on Cat Attachments and machines, contact your local dealer.

ATTACHMENTS	MODEL	320 GC	320	323
BUCKETS*	Clean-up	●	●	●
	Ditch Cleaning	●	●	●
	Ditch Cleaning - Tilting	●	●	●
	General Duty	●	●	●
	General Duty - Wide Tip	●	●	●
	Heavy Duty	●	●	●
	Heavy Duty - Pin Grabber Performance	●	●	●
	Heavy Duty - Power		●	●
	Severe Duty		●	●
	Severe Duty - Power		●	●
COMPACTORS	CVP75	●	●	●
	CVP110	●	●	●
COUPLER	Pin Grabber	●	●	●
GRAPPLES	Contractors - G120B		●	●
	Contractors - G125B		●	●
	Demolition & Sorting - G310B			●
	Demolition & Sorting - G315B		●	●
	Demolition & Sorting - G320B		●	●
	Trash		●	●
HAMMERS	B20	●	●	●
	H110ES			●
	H115ES	●	●	●
	H120ES	●	●	●
	H130ES	●	●	●





ATTACHMENTS	MODEL	320 GC	320	323
<b>MULTI PROCESSORS</b>	MP318 (All jaw types)		●	●
<b>PULVERIZERS</b>	P215		●	●
<b>RAKES*</b>	Rake		●	●
<b>RIPPERS*</b>	Ripper		●	●
<b>SHEARS</b>	S325B (Rotating)		●	●
	S2050 (Straight)		●	●
<b>THUMBS*</b>	Stiff Link		●	●
	PRO		●	●
	PRO PLUS		●	●

\*Multiple sizes and/or variations available. Contact your local Cat dealer for more information.



**Not sure who to contact?**

Find your local dealer [here](#).

**BUILT FOR IT.**

Learn more at [cat.com](#)



GEHQ0252 December 2017

© 2017 Caterpillar. All Rights Reserved. CAT, CATERPILLAR, BUILT FOR IT, their respective logos, "Caterpillar Yellow," and the "Power Edge" trade dress, as well as corporate and product identity herein, are trademarks of Caterpillar and may not be used without permission.